

GENERAL NOTES:

- The Contractor shall comply with all applicable safety regulations. All construction shall be completed following current City Standard Specifications and Special Provisions, unless otherwise noted.
- Contractor will be required to provide notice to utility companies a minimum of seventy-two (72) hours prior to any excavation, as follows:
Kansas One-Call 687-2470
The Contractor must notify the following in case of an emergency:
AT&T 1-800-246-8464
Black Hills Energy 1-800-594-9889
City of Wichita Water & Sewer 1-316-219-8521
City of Wichita Stormwater 1-316-268-4000
City of Wichita Traffic 1-316-268-4254
Cox Communications 1-888-749-3550
Kansas Gas Service 1-888-682-4920
Kansas 1-800-544-4857
- Utility service lines, poles, etc. are to be adjusted as necessary by others prior to construction unless the plans specifically call for their adjustment by the Contractor or unless the plans specifically identify a utility to be adjusted by its owner during construction. Existing utilities and their locations, as shown on the plans, represent the best information obtainable for design. The Contractor will be required to work around existing utilities within the right-of-way which do not conflict with proposed construction.
- Rubble from the removal of miscellaneous structures and excess excavation which is to be retained shall be disposed of on sites to be provided by the Contractor. These sites shall be approved by the Engineer as to suitability, appearance and site location. Locations, in the opinion of the Engineer, that will have an unightly appearance will not be approved. All rubble must be approved by the Kansas Department of Health and Environment. Rubble at other locations or disposal of in a flood plain will require a Kansas State Board of Agriculture permit. Any material buried in wetlands in the United States or wetlands is subject to U.S. Corps of Engineers permitting regulations. Any material buried or stockpiled beyond approved construction limits will require additional archaeological investigations unless buried in a previously approved borrow location.
- Trees and shrubs in public right-of-way which are in direct conflict with proposed new construction shall be removed by the Contractor with the City Engineer's approval. Trees and shrubs which are not in direct conflict with proposed new construction shall be saved and protected from damage.
- The Contractor shall give all property owners and/or tenants of developed property adjoining the construction of this project a minimum of ten (10) days notice prior to start of construction.
- The Contractor shall be responsible for preserving property lines. The Contractor will be required to re-establish any property lines which are damaged or destroyed by his construction operations. Such lines shall be re-established by a Licensed Land Surveyor in accordance with state laws.
- The Engineering Division shall field locate water valve one time during construction unless requested by the Contractor. It shall be the Contractor's responsibility to preserve such field locations during the construction process. Water valves, valve boxes or fire hydrants damaged during construction shall be repaired by Contractor at his own expense. Valve boxes and water meters within the project limits shall be adjusted to match field grades by the contractor.
- The Contractor shall notify the consultant engineer and Shante Robinson at 316-620-2740 with the City of Wichita with the anticipated construction start date and notify them of project completion. Staking and inspection for this project will be the responsibility of the Contractor.
- If traffic will be impacted by construction, a traffic control plan must be submitted and approved by the City Traffic Engineer at traff@cityofwichita.gov before construction can begin. The contractor shall be responsible for all traffic control measures to facilitate construction. All construction zone markings and signage shall conform to the latest version of Manual on Uniform Traffic Control Devices (MUTCD) as published by the US Dept. of Transportation, Federal Highway Administration. All signs associated with construction markings and signage shall be the Contractor's responsibility.
- All elevations shown are NAVD88.
- All areas disturbed during construction that will not be under proposed pavement shall be restored to match existing conditions per City specifications.

- Any sidewalk, drive approach, curb, or street pavement removed to construct project must have a pavement cut permit and be replaced by the City contractor. Permits can be obtained by calling 316-268-4501 or 316-268-4605.
- All applicable fees (see equl) in lieu of a main benefit) must be paid before any connections can be made on this project. Quotes can be obtained on fees by calling 316-268-4552.
- City Maintenance of sanitary sewer makes ends at last structure within right-of-way line.
- All stubs and capped pipes shall be located with green plastic tape in the same manner as risers.
- Connecting to Existing Manholes: Prior to cutting sewer lines using existing stubs in existing manholes, the Contractor shall expose and verify the elevation, grade and alignment of existing stubs and notify the Engineer of any deviation from the plans. Where the stub is unusable due to elevation grade or alignment, the Contractor shall remove the stub and plug the hole, and reshape the existing manhole invert to provide smooth flow. Where connection to an existing manhole that does not have an existing stub, the Contractor shall core cut into existing manhole wall to make connection using approved water stop gasket, and reshape the existing manhole invert to provide smooth flow. The cost of connect to existing manholes is incidental to the project.
- Contractor shall limit the extent of trench open overnight and exposure to less than 50 feet.
- Contractor shall provide positive drainage away from all manhole covers.
- The Contractor shall prevent any construction debris from entering the existing sanitary sewer during construction.
- The Contractor shall be responsible for maintaining continuous flow of sewage through construction. Contractors proposed method for maintaining sewage flow shall be submitted and approved by the Sewer Maintenance Division (316-268-4073) prior to starting and out-passing of sewage flows.
- Any sewer excavation from manhole and pipe removal shall be backfilled with A-3 compacted to 90-95% ASTM D698.
- The Contractor shall protect from damage and support existing utilities through construction as approved by the utility owner and the Engineer at the contractor's expense.
- All existing and proposed erosion control measures including all fencing, erosion control mat, stone boxes, silt barriers, and coars, entrance shall be maintained throughout construction by the contractor and used project is accepted by the City of Wichita. The on-site engineer shall complete weekly reports on the status of erosion control measures. The contractor shall be required to comply with maintenance and/or replacement of erosion control measures as determined by the on-site engineer until project is accepted by City of Wichita. Maintenance and/or replacement of erosion control measures to be paid by L.C. bid item "Maintain Existing Bins".
- The Contractor shall not begin work on the project until the Project Inspector is assigned and on site. Any work completed without inspection will be required to be uncovered for inspection of the Contractor's expense.

Benchmarks

BM #1: "1" chiseled on top of curb, approx 61.7' north & 5.3' east of the northeast property corner, West Wichita Addition, Wichita, Sedgwick County, Kansas
Elevation = 1300.17 (NAVD 88)

BM #2: "1" chiseled on top of curb, approx 54.5' south & 74.4' east of the southeast property corner, West Wichita Addition, Wichita, Sedgwick County, Kansas.
Elevation = 1300.18 (NAVD 88)

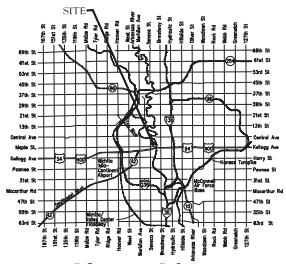
SANITARY SEWER IMPROVEMENTS
to serve
HANDLEY APARTMENTS

220 S. HANDLEY ST.
CITY OF WICHITA, KANSAS

Gary Janzen, P.E. City Engineer
2022-028424PPS
53030982

5447C
BASIN: SS1-07

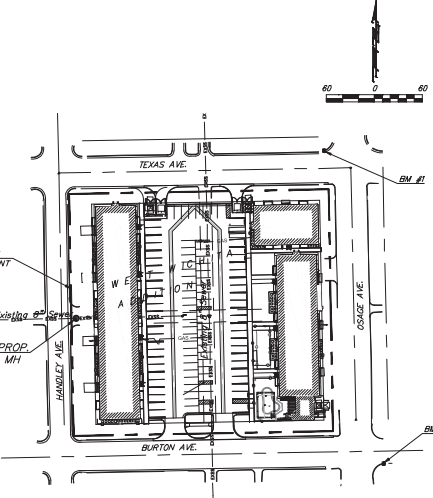
Date: 2023-01-09
Inspector: A. Thompson
Design/Inspecting Firm: Baughman Company/Kaw Valley Engineering, Inc.
Contractor: Key Construction
Subcontractor: Sooter Excavating, LLC
Built in general conformance to construction plans, except where noted on plans.



Vicinity Map

Sheet Index

Title Sheet	1
Line 1	2
Erosion Control/Grading Plan	3
Proposed SS Manhole Detail	4
Manhole Frame & Cover Detail	5
Erosion Control BMP Details	6-10
Copy of Plot	11



APPROVED AS NOTED
BY WICHITA PUBLIC WORKS
ENGINEERING DIVISION
Engineering approved by Shawn Melles on 12.01.22

Utilities approved by Debra Arty on 12.01.22

NOTE TO CONTRACTORS
Inspection and testing for this project is to be provided by a Licensed Consulting Engineering Firm under contract with the Owner/Developer. Said inspection to be in accordance with the City of Wichita standard construction engineering practices and certified by a Licensed Professional Engineer in the state of Kansas. No work shall be performed by the Contractor without such inspection nor shall any work be commenced without written authorization by City Engineering. All Construction and Materials shall comply with the current City of Wichita Specifications and Standards and Special Provisions (on file and available at Wichita.gov).
An approved copy of these plans signed by City staff are required on-site.



December 2, 2022
BAUGHMAN COMPANY
315 Ellis St, Wichita, KS 67211 316-262-7271
BaughmanCo.com

BENCHMARKS:

BM #1: "1" chiseled on top of curb, approx 61.7' north & 5.9' east of the northeast property corner, West Wichita Addition, Wichita, Sedgwick County, Kansas. Elevation = 1300.17 (NAVD 88)

BM #2: "1" chiseled on top of curb, approx 54.5' south & 74.4' east of the southeast property corner, West Wichita Addition, Wichita, Sedgwick County, Kansas. Elevation = 1300.18 (NAVD 88)

Contractor to verify depth and location of existing utilities. Contractor to relocate any existing utilities as necessary for construction.

City Maintenance of sanitary sewer mains ends of last structure within right-of-way line.

Built as per plans. @ Sta. 0+00.00, shallow manhole was constructed over existing 8" sewer line and capped the 8" sewer line eastward. The Elev. for TOP of manhole is 1300.30

NOTE: The entrance was saw cut and backfilled after the manhole was constructed.

Sta. 0+00.0, Line 1
Construct shallow manhole over existing 8" sewer line. Cap pipe east.
Top Elev. = 1300.10
New 1,604,291.57 E = 1,644,966.60

Saw cut and remove existing driveway as needed for manhole construction. Pavement doesn't need regrading.

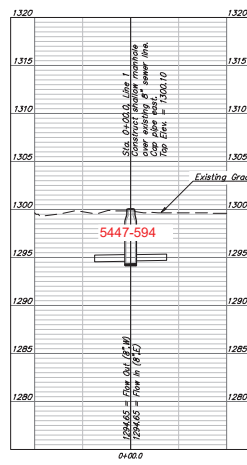
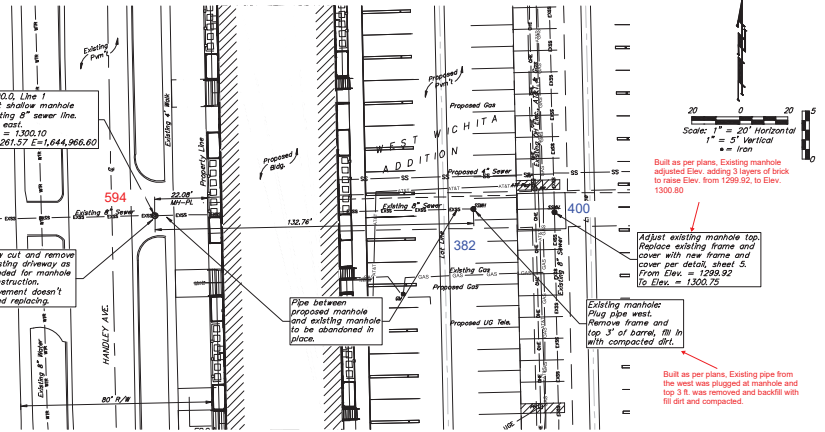
Pipe between proposed manhole and existing manhole to be abandoned in place.

Built as per plans. Existing manhole adjusted Elev. adding 3 layers of brick to raise Elev. from 1299.92 to Elev. 1300.00

Adjust existing manhole top. Replace existing frame and cover with new frame and cover per detail, sheet 5. From Elev. = 1299.92 to Elev. = 1300.75

Existing manhole. Plug pipe west. Remove frame and top 1' of sewer, fill with compacted dirt.

Built as per plans. Existing pipe from the west was plugged at manhole and top 3 ft. was removed and backfill with fill dirt and compacted.



Contractor shall verify elevation and alignment of existing 8" pipe prior to construction and notify Engineer of any discrepancy



BAUGHMAN COMPANY

315 E 8th St
Wichita, KS 67211
316-262-7271
BaughmanCo.com

HANDLEY APARTMENTS

LINE 1

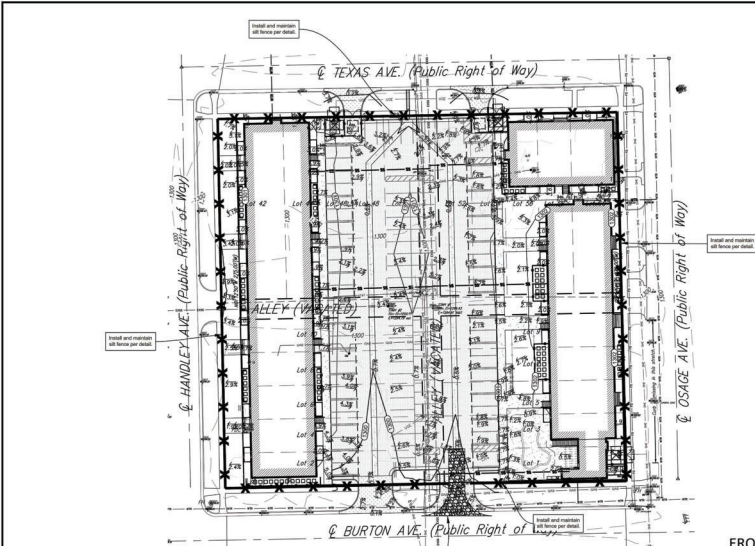
WATER DISTRIBUTION SYSTEM

PROJECT NUMBER: 22-06-E218

DESIGN: T.J.W. DRAWN: T.M.S.

DATE: December 2, 2022

SHEET OF 2 11



LEGAL DESCRIPTION

Parcel 1, West Wichita Addition, Wichita, Sedgewick County, Kansas.

SITE INFORMATION

Total Area: 176,550 sq. ft. (1.80 acres)
 Disturbed Area: 176,550 sq. ft. (1.80 acres)
 Impervious Area, pre-constr: 157,550 sq. ft. (1.80 acres)
 Impervious Area, post-constr: 176,550 sq. ft. (1.80 acres)

BENCHMARKS

Site Benchmark - 1
 "1" located on top of curb, approx 61.7' north & 5.1' east of the northeast property corner, West Wichita Addition, Wichita, Sedgewick County, Kansas. Elevation = 1300.12 (NAVD 88)

Site Benchmark - 2
 "2" located on top of curb, approx 54.7' south & 71.4' east of the southeast property corner, West Wichita Addition, Wichita, Sedgewick County, Kansas. Elevation = 1300.12 (NAVD 88)

KANSAS ONE CALL

Contractor shall be required to provide notification to Kansas One Call at 287-2424 a minimum of three (3) working days prior to any excavation or work adjacent to utilities.

UTILITY CONTACTS

The Contractor must notify the following in case of an emergency:

Kansas Gas Service (Gas)	1-888-482-4950
Black Hills Energy (Electric)	1-800-280-0037
Energy (Electric)	313-8650
Cox Communications (Telecommunications)	302-4379
AT&T (Telecommunications)	268-3709
City of Wichita Water Dept. (Water)	268-4683
City of Wichita Sewer Maint. (San. Sewer)	268-4008
City of Wichita Storm Sewer Maint. (Storm Sewer)	268-4022
City of Wichita Traffic Maint. (Trul. Control)	268-4034
Williams Pipeline Co. (Petroleum)	268-6000
Conoco Pipeline Co. (Petroleum)	1-800-231-2551
Williams Pipeline Co. (Petroleum)	1-800-324-9696
Phillips Pipeline Co. (Petroleum)	1-800-766-9230



**FOR REFERENCE ONLY
NOT TO SCALE**

DON HATTAN USED CAR
 7600 W. KELLOGG STREET
 WICHITA, KS 67209

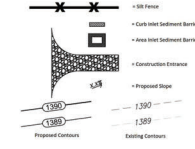


HANDLEY APARTMENTS

EROSION CONTROL PLAN

PROJECT NUMBER: 22-08-0294
 DATE: 11-21-2022
 DESIGN: T.J.W. OSWALD, K.M.S.
 PROJECT NUMBER: 22-08-0218
 DESIGN: T.J.W. OSWALD, T.M.S.
 DATE: December 2, 2022
 SHEET 3 OF 11

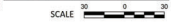
EROSION CONTROL LEGEND



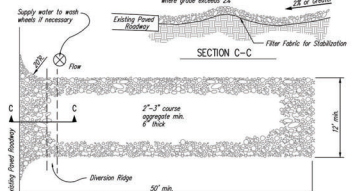
EROSION CONTROL NOTES

- No land clearing or grading shall begin until all applicable erosion control measures have been installed. This project is subject to the SWPPP plan, if applicable. The Contractor shall comply with any unusual requirements as necessary for the site to be in compliance during construction, per this plan and per City and State specifications (see 013).
- All exposed areas shall be seeded as specified within 14 days of final grading. Seed is to include straw mulch, except in places per industry standards.
- Should construction stop for longer than 14 days, the site shall be seeded as specified.
- Maintain erosion control measures after each rain and at least once a week.
- This plan shall not be considered all inclusive as the contractor shall take all necessary precautions to prevent soil sediment from leaving the site.
- Contractor shall comply with all state and local ordinances that apply.
- Additional erosion and sediment control measures will be installed if deemed necessary by the site inspector.
- Land disturbing activities shall not commence until approval to do so has been received by governing authorities.
- If installation of storm drainage systems should be interrupted by weather or nightfall, the pipe ends shall be covered with filter fabric.
- See Landscape Plan for ground treatments in all disturbed areas beyond impervious surfaces.
- This Erosion Control Plan should be job made and/or on site at all times. The Contractor is responsible for any needed changes, updates or maintenance to BMP's on site. This plan may change and updates needed to be recorded and documented on the plan. This plan is flexible plan, due to changing site conditions and weather. Please inform Landscape Architect and/or Engineer of changes to plan.
- ANY substitution for the sediment control devices shown, must be approved by the Landscape Architect and/or Engineer prior to any work on site.
- If the disturbance is over 1 acre, an NPDES Permit Application has been submitted for this property and a copy of this application must be kept at the job site for the duration of the construction process.

EROSION CONTROL PLAN

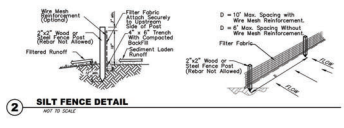


CONSTRUCTION ENTRANCE REQUIREMENTS:
 Entrance at the corner of the Street (Refer to Erosion Prevention Plan, Guidelines, and Detail, this Detail complies with the Minimum of 2' High by 2' in Length with 2" of 1/2" Dia. Stone at a Depth of 12"



- NOTES:
- THE ENTRANCE SHALL BE MAINTAINED IN A CONDITION THAT WILL PREVENT TRACKING OR FLOWING OF SEDIMENT ONTO PUBLIC RIGHTS-OF-WAY. THE AREA REQUIRES TOP DRESSING, STORM DRAINAGE CLEAROUTS OR ANY MEASURES LISTED TO THAT GOVERNMENT.
 - WHEN NECESSARY, WHEELS SHALL BE CLEANED FROM TO ENTRANCE ONTO PUBLIC RIGHT-OF-WAY.
 - WHEN REQUIRED AS SPECIFIED, IT SHALL BE DONE ON AN AREA STABILIZED WITH CRUSHED STONE THAT DRAINS INTO AN APPROVED SEDIMENT TRAP OR SEDIMENT BASIN, AS SHOWN ABOVE.
 - DRIVE ENTRANCES ONTO RESIDENTIAL LOTS WILL NOT BE REQUIRED TO HAVE THE SEDIMENT BARRIERS SHOWN, BUT WHEEL WASHING MAY BE REQUIRED TO PREVENT TRACKING OF SOIL TRACKING TO NEIGHBORING LOTS FROM BEING TRACKED ONTO ADJACENT STREET. ENTRANCES SHALL EXTEND FROM BACK OF CURB TO DRIVEWAYS.

1 STABILIZED CONSTRUCTION ENTRANCE



2 SILT FENCE DETAIL

