

WILDCAT

construction



45" VCP (Stacked Clay Tile) Storm Water Replacement

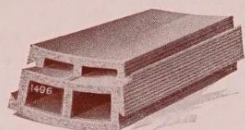
September 2023



Dickey Segment Blocks

Everlasting, Vitrified, Salt Glazed Hollow Clay Blocks

Type "B" Block

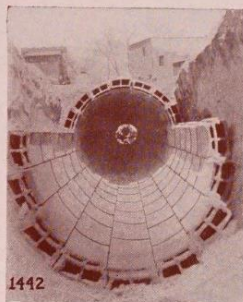


For Sizes 30, 33, 36, 39, 42, 45, 48, 51, 54, 57, 60 and 66 Inches.

The modern material for large sewers and culverts. Easily constructed and permanent.

The thickness of the walls and webs of all types are accurately estimated to meet the heaviest duty to which the respective sizes can be subjected.

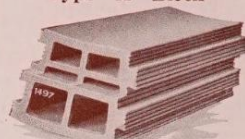
For Large Sewers, Culverts and Drains.



1442

Segment Blocks Sewer Construction.

Type "A" Block



For Sizes 72, 78, 84, 90, 96, 102 and 108 Inches.

Specifications, Type "A"

Diam. of Sewer, Inches	Number of Blocks to Circle	Number of Blocks Per Ft.	Weight per Sewer Ft. Lbs.
72	22	11	1100
78	24	12	1200
84	26	13	1300
90	28	14	1400
96	28	14	1600
102	30	15	1700
108	30	15	1800

Specifications, Type "B"

Code Word	Diam. of Sewer, Inches	BLOCKS		Weight per Sewer Ft. Lbs.	DIMENSIONS OF BLOCKS IN INCHES		
		To Circle	Per Ft.		Width	Length	Thickness
Beet	30	10	5	290	9 1/4	24	4 3/4
Befit	33	11	5 1/2	320	9 1/4	24	4 3/4
Befox	36	12	6	350	9 1/4	24	4 3/4
Before	39	13	6 1/2	420	9 1/4	24	5 1/2
Befriend	42	14	7	470	9 1/4	24	5 1/2
Befuddle	45	15	7 1/2	450	9 1/4	24	5 1/2
Beg	48	14	7	475	10 1/2	24	6
Begat	51	15	7 1/2	500	10 1/4	24	6
Begin	54	16	8	555	10 1/4	24	6
Begird	57	17	8 1/2	715	10 3-16	24	6 3/4
Begone	60	18	9	755	10 3-16	24	6 3/4
Beguile	66	20	10	845	10 3-16	24	6 3/4

Type "A"

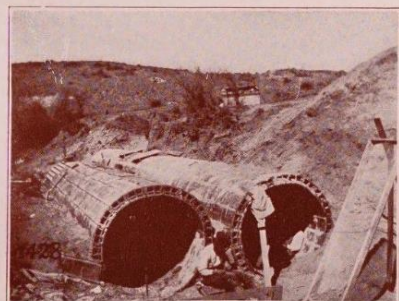
Code Word	Diam. of Sewer, Inches	DIMENSIONS OF BLOCKS IN INCHES		
		Width	Length	Thickness
Bejewel	72	10	24	7 7/8
Belabor	78	10	24	7 7/8
Belch	84	9 7/8	24	8 1/4
Belfry	90	9 7/8	24	8 1/4
Belief	96	10 1/2	24	8 1/2
Belong	102	10 1/2	24	8 1/2
Belt	108	11 1/4	24	10 1/2



Cut No. 1509—T-Branch Segment Sewer Block Branches or Junctions, Segment Block Fittings

"T" JUNCTIONS			"Y" JUNCTIONS		
Code Word	Opening Diam., Inches	Sewer Diam., Inches	Code Word	Opening Diam., Inches	Sewer Diam., Inches
Ben	6	30-33-36	Bennet	6	30-33-36
Benam	6	39-42-45	Bent	6	39-42-45
Bench	6	48	Benthal	6	48
Bend	6	51	Benumb	6	51
Bender	6	54	Bepaint	6	54
Beneath	6	60-66	Bequest	6	60-66
Benedict	6	72-78	Berate	6	72-78
Benefit	6	84-90	Bereave	6	84-90
Benight	6	96-102	Berg	6	96-102
Benison	6	108	Berm	6	108

We also furnish other sizes of Junctions as required.



Twin Segment Block Culvert Ready for Headwall.



Everlasting clay products ...

by Dickey, W. S., clay mfg. co. [from old catalog]

Publication date

1921

Topics

[Clay industries -- Missouri](#)

Publisher

Kansas City, Mo., W. S. Dickey clay mfg. co

Collection

[library_of_congress](#); [fedlink](#); [americana](#)

Contributor

The Library of Congress

Language

English

cover-title, 3-74 p. 27 cm

Notes

Title and copyright are on cover.

Addeddate

2019-10-24 14:18:46

Call number

8722392

Camera

Sony Alpha-A6300 (Control)

External-identifier

[urn:oclc:record:1156391536](https://nvd.nist.gov/urn:oclc:record:1156391536)

Foldoutcount

0

Homepage

<https://www.loc.gov/flicc/>

Identifier

everlastingclayp00dick

Identifier-ark

[ark:/13960/t44r60n9v](https://nvd.nist.gov/ark:/13960/t44r60n9v)

Identifier_bib

00332668432

Invoice

36

Lc_call_number

TP818 .D5

Lccn

21007656

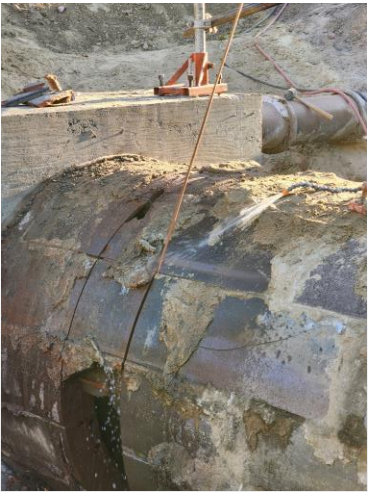
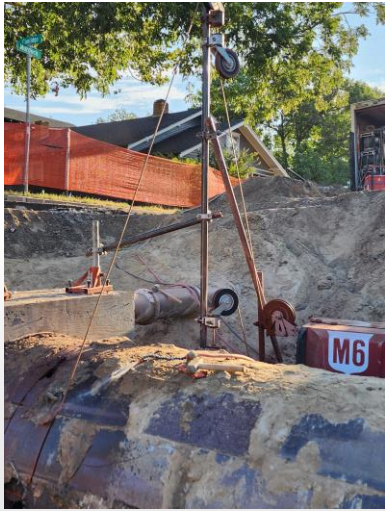
SHOW MORE

Full catalog record

[MARCXML](#)

Source:

<https://archive.org/details/everlastingclayp00dick/page/34/mode/2up>







Location of deflection found
below SWS Structure 5348-0208.

Green SDR line is Storm Conduit
75416 heading N.W. to Storm
Structure 5348-0207



Repair of deflection found below
SWS Structure 5348-0208.

Green SDR line is Storm Conduit
75416 heading N.W. to Storm
Structure 5348-0207



