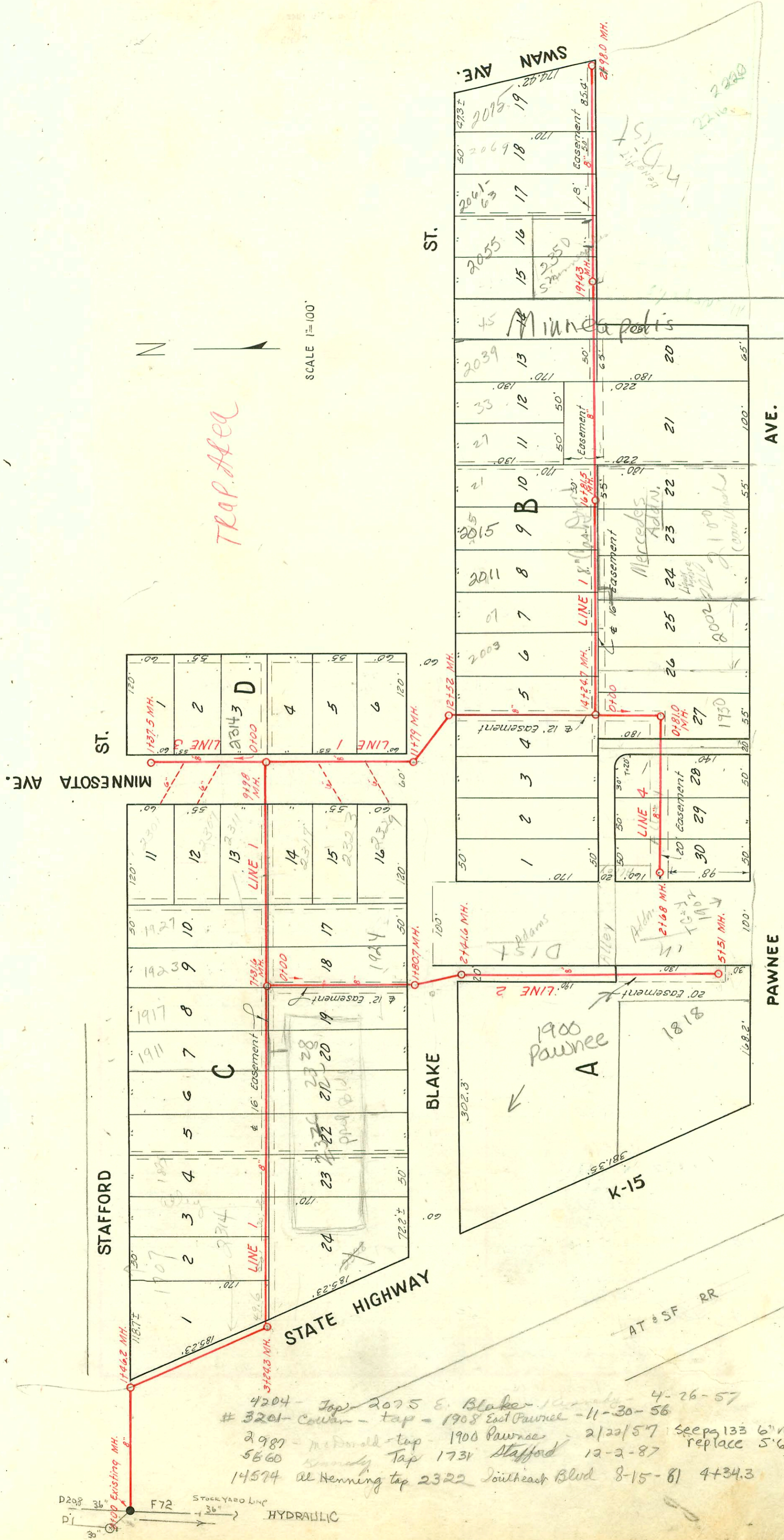


LAT. 24, DIST. B, S. S. # 20

W. B. CARTER
BOOK. JF. 70,
JUNE 25, 1953
PROJ. NO. C23-13

NOTE:
Construction Record booked
on pages 132, 133



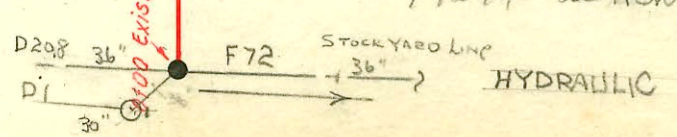
TRAP Area



SCALE 1"=100'

4204 - Tap 2075 E. Blake - 4-26-57
 # 3201 - Cowan - tap - 1908 East Pawnee - 11-30-56
 2987 - McDonald - tap - 1900 Pawnee - 2/22/57
 5660 - Kennedy Tap 1731 Stafford 12-2-87
 14574 at Henning tap 2322 Southeast Blvd 8-15-81 4+34.3

2003-01640-6/20/03-2015 Blake
 Kansas Ditch- 4" PVC, TWIN CO,
 1H22, 54' W of 16+81.5 (16+27.5)
 shallow
 2003-01639-6/20/03-2011 Blake
 Kansas Ditch- tied back to
 wye wildnut, twin co, 4"
 sch 40, 44" fall, 2H22
 2002-20447-2/20/02-
 2326.5 South east B1-Morris
 Ditch- 1H45, twin co, trap,
 4" sch 40 PVC, 1/4" fall, 1H22
 Predco Saddle 192.6' W of
 MH 7+31.6 (5+39) 1V45



CONSTRUCTION RECORD

SERVICE RECORD

STATION	ELEVATION		Depth	MANHOLE	4-INCH "Y" BRANCHES		No. of Permit		House Number		DATE OF PERMITS			
	Ground	Grade			North West	South East	North West	South East	North West	South East	North West	South East	North West	South East
0+0	98.9	89.42	9.5	0+00 Existing MH.										
1+0	98.3	89.53 out 89.52 out 87.67 in	8.8 7.8 7.7											
2+0	97.5	89.73	7.8	1+46.2										
3+0	97.5	89.83 out 89.86 out 89.96 in	7.7 7.5 7.4											
4+0	97.8	90.04	7.8	3+24.3	NORTH 3+90.6	SOUTH 3+93.6	#5763	1907-0058 1721	1721	7-6-53	8-27-99			
5+0	97.7	90.14	7.6		4+39.3	5+46.2	#1439		SE. Blake	9-24-63	6-11-69			
6+0	98.8	90.24	8.6		4+90.5	4+93.5	#3012				12-23-54			
7+0	97.4	90.34	7.1		5+36.0	5+39.0								
8+0	96.7	90.44	6.3		5+89.8	5+89.8	10531		1911 Stafford		6-1-59			
9+0	97.6	90.54 out 90.62 out 90.72 in	7.1 7.0 6.0	7+98	6+42.4	6+45.4	10530		1911 Stafford		6-1-59			
10+0	96.6	90.74	5.9		6+90.7									
11+0	97.2	90.83	6.4	10+87.3	WEST 10+04	EAST 10+64	#5621		2320 S. Pawnee		6-22-53			
12+0	97.3	90.93	6.4	11+79.0	11+43.7	11+17.2	#5622		2323 S. Pawnee		6-22-53			
13+0	97.2	90.98	6.2	12+52.0	12+52.0	13+21.8	#5623		2324 S. Pawnee		6-22-53			
14+0	97.2	91.03	6.2	13+21.8	13+18.8	13+18.8	#5694		1926 E. Pawnee		7-2-53			
15+0	94.4	91.33	3.1	14+24.7	NORTH 14+77.0	SOUTH 14+74.0	#599	991222 96-1902 135.0	2003 E. Blake 2002 S. Pawnee	4-12-54	6-10-99 11-14-96 6-30-54			
16+0	89.0	91.43		15+37.0	15+28.0	15+28.0	#600	05547	2007 E. Pawnee	4-12-54	11-1-67			
17+0	96.7	91.51	5.2	16+81.5	16+16.3	16+13.3	#601	01639	2011 E. Blake	6-20-53				
18+0	96.4	91.53	4.9	16+27.0	16+27.0	16+50.0	#7441		2015 E. R. see next	4-12-54				
19+0	95.8	91.63	4.2	17+03.0	17+01.0	17+01.0	#627		2015 E. R. see next	6-20-53				
20+0	96.1	91.73	4.4	18+03.0	18+00.0	18+00.0	#628		2100 E. Pawnee	7-21-54				
21+0	96.7	91.77	3.9	18+50.0	18+53.0	18+53.0	9080		2039 E. Blake	1-28-59				
22+0	96.7	91.77	3.9	18+99.0	18+99.0	19+20.8	#297		2209 Pawnee		3-22-56			
23+0	97.2	91.83	5.4	19+43.0	19+50.0	19+50.0	#52030		2350 S. Pawnee	5-10-21-75	1-28-59	8-19-66		
24+0	94.7	91.93	2.8	20+53.0	20+50.0	20+50.0	#38886		2055 E. Blake	4-19-75				
25+0	94.7	91.93	2.8	21+00.5	21+06.5	21+06.5	#3245		2061 E. Blake	12-10-75				
26+0	94.5	92.03	2.5	21+50.9	21+59.9	21+59.9	#1644		2069 E. Blake	3-12-58				
27+0	94.5	92.03	2.5	21+98.0	(4" Stub S.)		#2170		2329 E. Pawnee	1-25-55				

Line #2

This project continues on page 133

C70370-1802 E. Blake 2-27-79-RD Campbell top (4+40.9)

#4083-1913-14 E. Pawnee - Howard Cowan - top - 8-7-53

#4084-1916-18 E. Pawnee - Howard Cowan - top - 8-7-53

#4085-1920-22 E. Pawnee - Howard Cowan - top - 8-7-53

#5373-2nd - 2102 E. Pawnee - 5-28-53 - W. B. Carter Const. Co. (Bert R. Brothers).

#5618-2nd - 2302 S. Pawnee - 6-22-53 - Creekmore Oly. Co.

#7323-1st - 2208 E. Pawnee - 12-14-53 - Boyer Oly. Co.

#5764-2nd - 1731 Stafford - 7-9-53 - Fredenich Oly. Co.

#5781-2nd - 2204 E. Pawnee - 7-11-53 - Gave me Donald - 7-11-53 - 8-14-67 - Der Sniffen

#3772-1st - 2317 E. Pawnee - 3-24-56 - Muller - Oly. Co.

#488-2nd - 1914 E. Pawnee - 4-1-54 - R. R. Ray

#2170-1st - 1924 E. Blake - 9-17-56 - Cowan Const.

1825 E. Blake - 9-28-93 - 1924 E. Blake - 12 ft W. of P.M. 4" clay

#14110-1st - 1707 Stafford - 4-26-51 (1+97.2)