

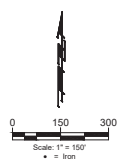
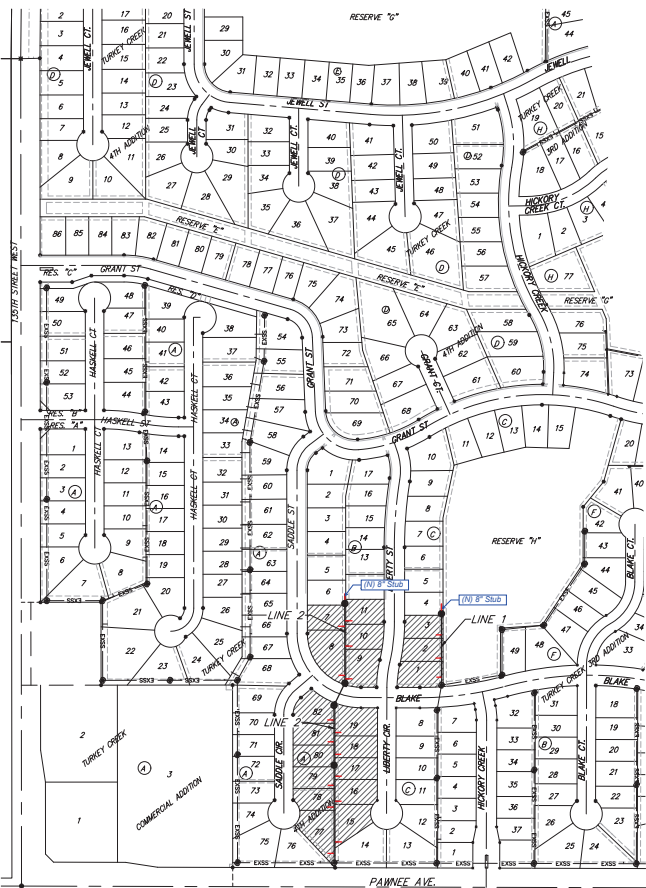
SANITARY SEWER IMPROVEMENTS
to serve

TURKEY CREEK 4TH ADDITION - PHASE III

CITY OF WICHITA, KANSAS

Paul Gunzelman, P.E. Interim City Engineer
Project Number 468-2020-016815
Org Code Number 47267722
Munis Number E2107

Newark Construction - Contractor
S. Lovin - City of Wichita, Field Project Engineer
L. Powell - Baughman, Inspector
As-built
Sulis & Risner
Release Date for connection purposes only: 10/2/2023
Completion Date:
pdf_spr 10/13/2023



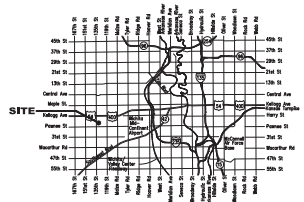
4645C
CIS-5A

SHEET INDEX

Title Sheet	1
Line 1	2
Line 2	3-4
Erosion Control Plan	5
Erosion Control BMP Details	6-10
Precast Manhole Detail	11
Frame & Cover Detail	12
Vertical River Detail	13
Coordinate Sheet	14-15
Copy of Plat	16

GENERAL NOTES:

- Contractor will be required to provide notice to utility companies a minimum of seventy-two (72) hours prior to any excavation, as follows:
 - Kansas Gas-Cool 687-2470
 - The Contractor must notify the following in case of an emergency:
 - Cox Communications 762-4270
 - Kansas Gas Service 1-888-482-4950
 - Wester Energy 381-8650
 - Altus Energy 1-800-301-0357
 - A/T&T 268-2245
 - City of Wichita Water Dept. 268-4545
 - City of Wichita Sewer Maint. 268-4034
 - City of Wichita Storm Sewer Maint. 268-4000
 - City of Wichita Traffic Maint. 268-4034
 - Clarks Pipeline Co. 1-877-267-2200
 - Southern Star Pipeline Co. 329-6000
 - Kilder-Morgan Pipeline Co. 1-888-844-5658
- Utility service lines, poles, valve bases, meters, and structures are to be adjusted as necessary by others prior to construction unless the plans specifically call for their adjustment by the Contractor or unless the plans specifically identify a utility to be adjusted by its owner during construction. Existing utilities and their location, as shown on the plans, represent the best information obtainable for design. The Contractor will be required to work around existing utilities within the right-of-way which do not conflict with proposed construction.
- Rubble from the removal of miscellaneous structures and excess excavation which is to be wasted shall be disposed of on sites to be provided by the Contractor. These sites shall be approved by the Engineer as to suitability, appearance and site location. Locations, in the option of the Engineer, that will leave an unsightly appearance will not be approved. All disposed sites must be approved by the Kansas Department of Health and Environment. Material either stockpiled or disposed of in a flood plain would require a Kansas State Board of Agriculture permit. Any material disposed in waters of the United States or wetlands is subject to U.S. Corps of Engineers permitting regulations. Any material buried or stockpiled beyond approved construction limits would require additional archaeological investigations unless buried in a previously approved borrow location.
- Trees and shrubs in public right-of-way which are in direct conflict with proposed new construction shall be removed by the Contractor with the Engineer's approval. Trees and shrubs which are not in direct conflict with proposed new construction shall be saved and protected from damage.
- The Contractor shall give all property owners and/or tenants of developed property abutting the construction of this project a minimum of ten (10) days notice prior to start of construction.
- The Contractor shall be responsible for preserving property lines. The Contractor will be required to re-establish any property lines which are damaged or destroyed by his construction operations. Such lines shall be re-established by a licensed land surveyor in accordance with state laws.
- All existing and proposed erosion control measures including silt fencing, erosion control mat, straw bales, inlet barriers, and coast entrance shall be maintained throughout construction by the contractor and until project is accepted by the City of Wichita. The on-site engineer shall complete weekly reports on the status of erosion control measures. The contractor shall be required to comply with maintenance and/or replacement of erosion control measures as determined by the on-site engineer until project is accepted by City of Wichita. Maintenance and/or replacement of erosion control measures to be paid by L.S. bid item "Maintain Existing BMP's."
- All excess excavation shall be removed from the site by the Contractor. Cost shall be included in "Site Clearing and Restoration" lump sum bid item.
- The Contractor shall be responsible for maintaining continuous flow of sewage through construction. Contractor's proposed method for maintaining sewage flow shall be approved by the Engineer. Cost of maintaining flow of sewage through construction will not be paid for directly and this cost shall be considered as subsidiary to the other pay items of work.
- All areas disturbed by construction are to be temporary seeded as follows:
 - Seed --- Eye grass; 5 lbs./1000 Sq. Ft.
 All costs associated with seeding including mobilization, preparation of ground, seeding, etc. shall be included in the L.S. bid item "Seeding".
- Trees and shrubs in the work area which are in direct conflict with proposed new construction shall be removed by the Contractor only as necessary for construction. Trees and shrubs which are not in direct conflict with proposed new construction shall be saved and protected from damage. If trimming is necessary, a chainsaw shall be used. Breaking limbs with equipment will not be allowed.
- The Developer for this project is Paul Kasey (716 N. 17th St., #15, Wichita, KS 67212) (316)722-1077 email paul.kasey@gmail.com



BENEFIT DISTRICT

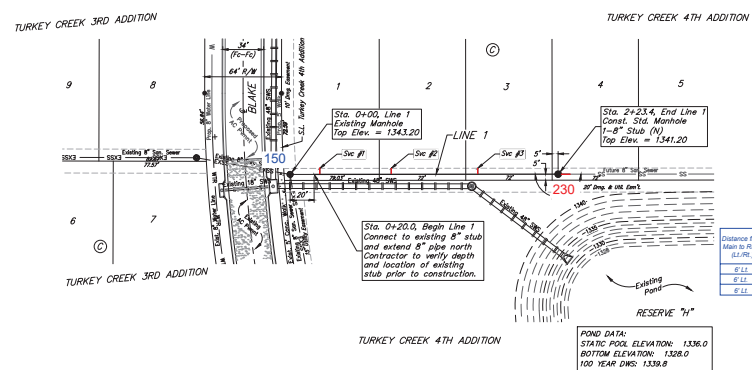
June 3, 2022

BAUGHMAN COMPANY
 315 Ellis St., Wichita, KS 67211 316-262-7271
 BaughmanCo.com

10/13/2023 10:00 AM 10/13/2023 10:00 AM 10/13/2023 10:00 AM

SW COR. 3RD/4, Sec. 36
Twp. 27-S, R-2-W

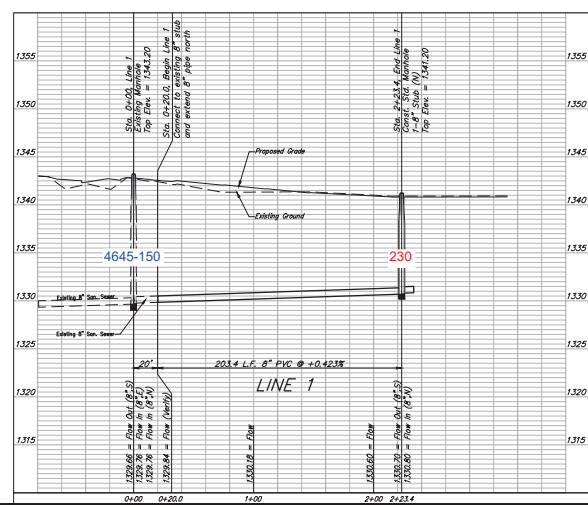
BENCHMARKS:
 RW spike in upper 1/4 SW Cor.
 N/2, SW/4, Sec. 34, T8P, 26-S,
 R-2-C
 Elev. = 1400.59 NAVD
 R.R. spike in E. face of power pole,
 174' S. of S. line, N/2, SW/4
 & 49' E. of W. line, SW/4, SEC.
 34, T8P, 26-S, R-2-E
 Elev. = 1386.64 NAVD88
 RW spike in S. face of power pole,
 294' S. of N. line, SW/4, R.
 49' E. of W. line, SW/4, SEC. 34,
 T8P, 26-S, R-2-C
 Elev. = 1386.14 NAVD88



SEWER SERVICE TABLE

Distance from Main to Rise (L/R)	Distance from		NUMBER	TYPE	LOCATION			FOR INFORMATION ONLY		
	Upstream	Downstream			LOT NO.	BLOCK NO.	LINE NO.	STATION/ DIRECTION	APPROXIMATE LENGTH	VERTICAL
6' L.S.	198'	25'	1	8" x 4" Tee	1	C	1	04N/41L	8'	8'
6' L.S.	139'	84'	2	8" x 4" Tee	2	C	1	04N/41L	8'	8'
6' L.S.	67'	156'	3	8" x 4" Tee	3	C	1	156/41L	8'	8'

POND DATA:
 STATIC POOL ELEVATION: 1336.0
 BOTTOM ELEVATION: 1328.0
 100 YEAR DWS: 1339.8



BAUGHMAN COMPANY
 315 Elm St.
 Wichita, KS 67211
 316-262-7271
 BaughmanCo.com

TURKEY CREEK 4TH ADDITION - PHASE III

LINE 1

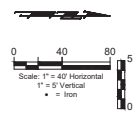
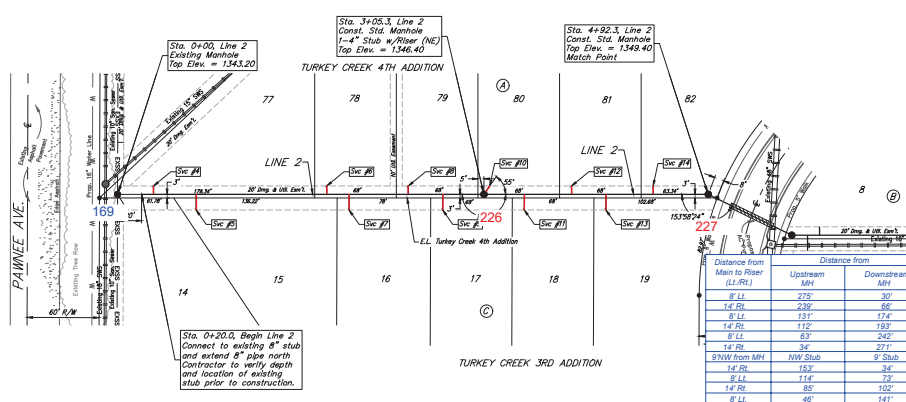
SANITARY SEWER IMPROVEMENTS
 PROJECT NUMBER: 458-2020-016815
 DESIGN: DMV DRAWN: JAK
 DATE: June 3, 2022

SHEET **2** OF **16**

BENCHMARKS:
 RR spike in easement, SW Cor.,
 N1/2, SW1/4, Sec. 34, T19P, R-2-E.
 Elev. = 1400.59 NAD83

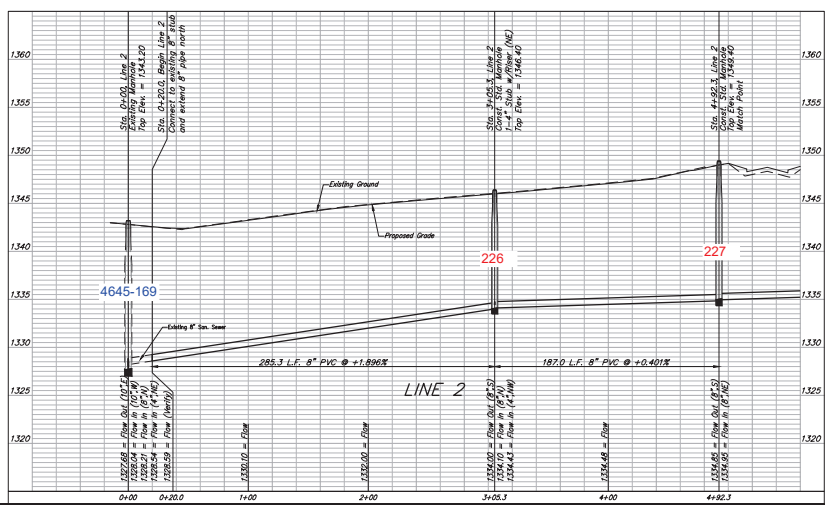
R.R. spike in E. face of power pole,
 1745 N. of S. line, N1/2, SW1/4,
 4-403 E. of W. line, SW1/4, Sec.
 34, T19P, R-2-E.
 Elev. = 1388.04 NAD83

RR spike in S. face of power pole,
 2942 S. of N. line, SW1/4, 4-
 492 E. of W. line, SW1/4, Sec. 34,
 T19P, R-2-E.
 Elev. = 1388.14 NAD83



SEWER SERVICE TABLE

Distance from Main to Rise/ (L/R)	Upstream MH	Downstream MH	NUMBER	TYPE	LOCATION			FOR INFORMATION ONLY		
					LOT NO.	BLOCK NO.	LINE NO.	STATION/ DIRECTION	APPROXIMATE LENGTH # FT	PIPE
8' LL	275	30	4	8" x 4" Tee	77	A	2	0+50.0/LL	8.7'	8"
14' RL	238	66	5	8" x 4" Tee	15	C	2	0+65.5/RL	9'	8"
6' LL	174	174	6	8" x 4" Tee	78	A	2	1+74.3/LL	9'	8"
14' RL	112	193	7	8" x 4" Tee	16	C	2	1+83.0/RL	8.6'	8"
6' LL	63	242	8	8" x 4" Tee	79	A	2	2+43.3/LL	8.5'	8"
14' RL	34	271	9	8" x 4" Tee	17	C	2	2+71.0/RL	8.1'	8"
8'NW from MH	153	34	10	4" Stub w/ Filter	80	A	2	3+25.3/LL	2.7'	8"
14' RL	114	73	11	8" x 4" Tee	18	C	2	3+50.0/RL	7.9'	8"
6' LL	114	73	12	8" x 4" Tee	81	A	2	3+78.3/LL	8.4'	8"
14' RL	85	102	13	8" x 4" Tee	19	C	2	4+02.0/RL	8.2'	8"
6' LL	46	141	14	8" x 4" Tee	82	C	2	4+46.3/LL	8.2'	8"



BAUGHMAN COMPANY

315 Elm St.
 Wichita, KS 67211
 316-262-7271
 BaughmanCo.com

TURKEY CREEK 4TH
 ADDITION - PHASE III

LINE 2

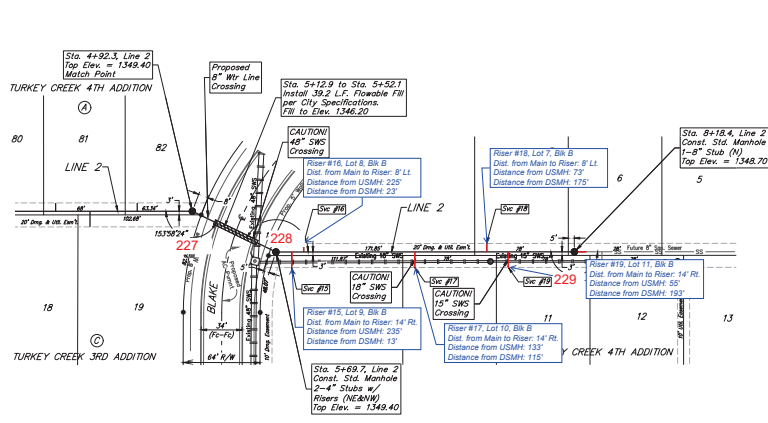
SANITARY SEWER
 IMPROVEMENTS

PROJECT NUMBER:
 458-2020-016815

DESIGN: DMV, SHAWN, JAK
 DATE: June 3, 2022

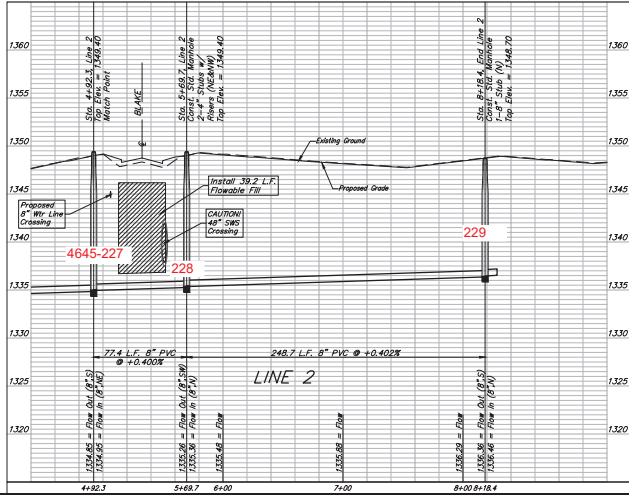
SHEET OF
3 16

BENCHMARKS:
 RW spike in quadrant, SW Cor.,
 N1/2, SW1/4, Sec. 34, T19P, 26-S,
 R-2-E.
 Elev. = 1400.59 NAD
 R.R. spike in E. face of power pole,
 174'5" N. of S. line, N1/2, SW1/4,
 4-40'3" E. of W. line, SW1/4, Sec.
 34, T19P, 26-S, R-2-E.
 Elev. = 1388.04 NAD1988
 RW spike in S. face of power pole,
 234'5" S. of N. line, SW1/4, 4-
 49'5" E. of W. line, SW1/4, Sec. 34,
 T19P, 26-S, R-2-E.
 Elev. = 1388.14 NAD1988



SEWER SERVICE TABLE

NUMBER	TYPE	LOCATION			FOR INFORMATION ONLY	
		LOT	BLOCK	LINE	APPROXIMATE LENGTH	4" PIPE
15	8" x 4" Tee	9	B	2	S+82.8/RL	0.0'
16	8" x 4" Tee	8	B	2	S+82.8/RL	0.8'
17	8" x 4" Tee	10	B	3	E+85.6/RL	7.9'
18	8" x 4" Tee	7	B	2	T+45.6/RL	7.8'
19	8" x 4" Tee	11	B	2	T+63.4/RL	7.3'



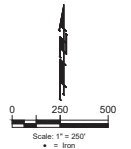
BAUGHMAN COMPANY
 315 Elm St.
 Wichita, KS 67211
 316-262-7271
 BaughmanCo.com

TURKEY CREEK 4TH ADDITION - PHASE III

LINE 2

SANITARY SEWER IMPROVEMENTS
 PROJECT NUMBER: 468-2020-016815
 DESIGN: DMV DRAWN: JAK
 DATE: June 3, 2022
 SHEET 4 OF 16

BENCHMARKS:
 001 spike in asphalt, SW Cor.
 N1/2, SW1/4, Sec. 34, T8P. 26-S,
 R-2-C.
 Elev. = 1400.59 NAVD
 002 spike in E. face of power pole,
 174' S. of S. line, N1/2, SW1/4
 & 49' E. of W. line, SW1/4, SEC.
 34, T8P. 26-S, R-2-E.
 Elev. = 1398.64 NAVD88
 003 spike in S. face of power pole,
 294' S. of N. line, SW1/4, &
 49' E. of W. line, SW1/4, SEC. 34,
 T8P. 26-S, R-2-E.
 Elev. = 1386.14 NAVD88





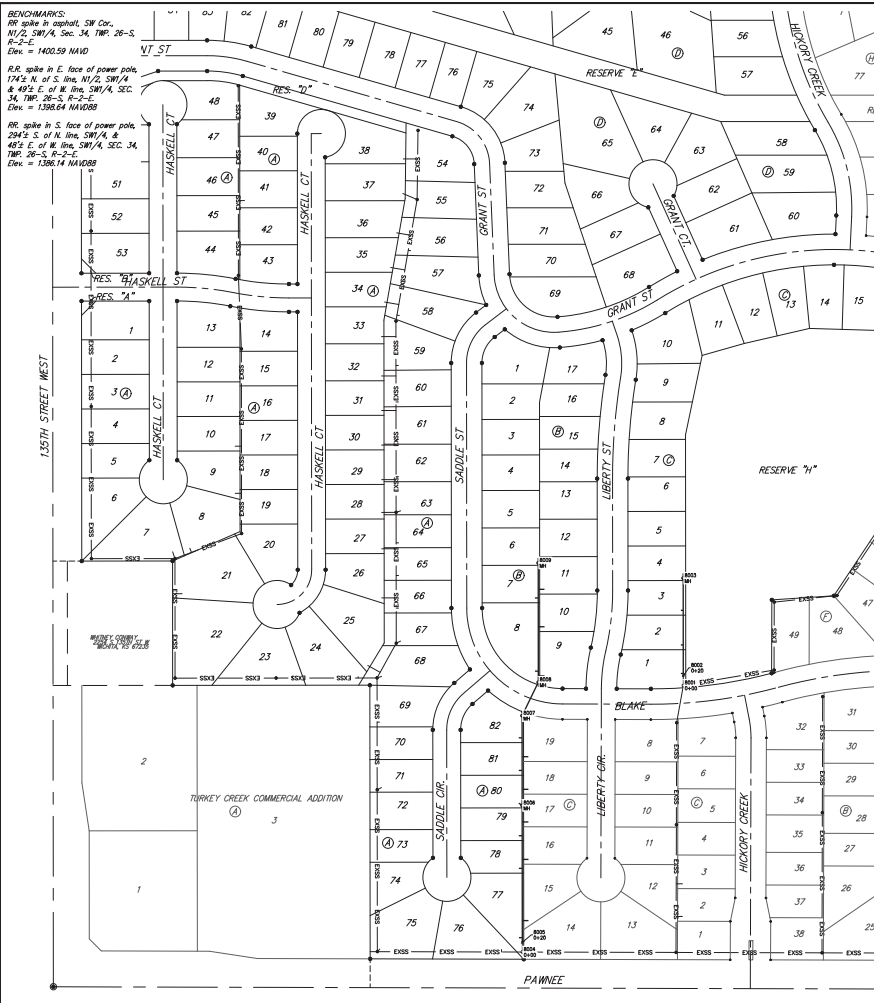
**BAUGHMAN
COMPANY**

315 E 8th St.
Wichita, KS 67211
316-262-7271
BaughmanCo.com

TURKEY CREEK 4TH
ADDITION - PHASE III

COORDINATES

SANITARY SEWER
IMPROVEMENTS
PROJECT NUMBER:
458-2020-016815
DESIGN DMV DRAWN: JAK
DATE: June 3, 2022
SHEET OF
14 16



BENCHMARKS:
 RW spike in upper SW Cor.
 N1/2 SW1/4, Sec. 34, T8P. 26-S.
 R-2-C.
 Elev. = 1400.59 NAVD

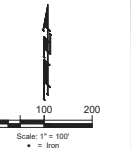
R.R. spike in E. face of power pole.
 1/4 S. of S. line, N1/2 SW1/4
 & 40% E. of W. line, SW1/4, Sec.
 34, T8P. 26-S., R-2-C.
 Elev. = 1388.64 NAVD88

IRC spike in S. face of power pole.
 294' S. of N. line, SW1/4, &
 48' E. of W. line, SW1/4, Sec. 34,
 T8P. 26-S., R-2-C.
 Elev. = 1386.14 NAVD88

IRONS		IRONS		IRONS	
Point	Northing	Point	Northing	Point	Northing
5	27,459.63	161	30,310.67	240	28,714.13
6	27,459.63	162	29,747.64	241	28,714.13
7	27,411.88	163	29,747.64	242	28,685.35
8	27,381.91	164	29,815.57	243	28,660.20
9	27,381.91	165	29,820.82	244	28,645.70
10	28,240.67	166	29,822.08	245	28,179.19
11	28,240.67	167	29,822.15	246	28,179.25
14	29,940.46	168	29,710.86	247	28,212.28
15	30,213.73	169	29,710.92	248	28,412.34
16	30,277.72	170	29,778.55	249	28,628.54
17	30,421.04	171	29,785.79	250	28,618.13
18	30,395.11	185	28,883.51	251	28,977.36
19	30,610.28	186	28,822.84	252	29,001.24
20	30,524.78	187	28,918.61	253	28,835.42
21	30,499.70	188	28,921.58	254	28,838.06
22	30,485.79	189	28,960.37	302	29,067.36
23	28,006.87	190	28,907.39	303	29,070.01
24	27,974.32	191	29,770.78	304	29,125.31
25	27,910.32	192	29,834.55	305	29,186.82
26	27,974.51	193	30,142.36	306	29,733.34
27	27,974.68	194	30,142.43	307	29,797.11
28	27,910.67	195	28,968.09	308	29,605.20
29	27,910.52	196	28,844.22	312	29,138.16
30	27,910.81	197	28,811.46	322	29,466.77
31	27,974.81	198	28,757.09	323	29,465.18
32	27,970.70	199	28,721.09	324	27,411.02
33	28,014.66	200	28,700.51	325	28,857.59
34	27,986.71	201	29,325.00	326	29,581.59
35	29,442.74	202	29,241.00	327	29,581.53
36	27,888.80	203	29,241.09	328	28,617.63
37	27,888.85	204	29,261.15	329	28,536.87
38	27,822.15	205	29,325.25	330	29,673.07
39	27,822.21	206	29,261.25	331	29,673.12
40	28,142.58	207	29,250.82	332	28,361.39
41	28,142.65	208	29,312.33	333	28,168.19
42	30,212.52	209	29,130.90	334	28,159.70
43	30,212.00	210	29,081.60		
44	30,210.29	211	28,840.13		
45	30,274.29	212	28,840.19		
46	30,271.74	213	28,782.13		
47	30,290.96	220	28,782.00		
48	30,475.38	221	28,782.19		
49	29,929.91	222	28,840.00		
50	29,901.66	223	28,826.31		
51	30,248.17	224	28,771.41		
52	29,848.82	225	28,817.53		
53	30,267.38	226	28,817.55		
54	29,787.72	227	28,450.52		
55	29,794.67	228	28,450.58		
56	29,731.65	229	28,759.53		
57	29,730.05	230	28,759.55		
58	29,749.70	231	28,222.36		
59	29,749.62	232	28,190.53		
60	30,318.17	233	28,132.55		
61	30,316.13	234	28,222.42		
62	30,316.65	235	28,653.07		
63	30,334.60	236	28,653.14		
64	30,384.94	237	28,758.16		
65	30,442.71	238	28,707.27		
66	30,363.75	239	28,723.24		

CONTROL POINTS			
Point	Northing	Easting	Desc.
001	32,844.25	24,801.84	1366.70 NWCOR
002	32,844.25	24,813.28	1366.61 NWCOR
003	29,999.23	30,061.89	1363.50 E1/4COR
004	27,903.79	29,997.18	1363.50 SECOR
005	27,915.64	24,803.02	1363.02 NWCOR
006	28,931.11	24,818.07	1366.43 NWCOR
007	28,931.85	27,492.82	1334.18 CIR
008	27,346.85	27,439.82	1334.14 S1/4COR
009	27,346.85	28,023.31	1363.76 N
010	28,035.90	30,075.30	1334.18 N
011	28,035.90	24,908.10	1363.68 MPAS
012	28,999.08	30,022.07	1363.77 MPAS
013	27,442.02	24,916.73	1363.52 CP
014	32,966.65	28,958.64	1325.10 CP
015	30,433.52	24,914.04	1363.69 MPAS
016	27,376.59	28,966.08	1338.38 PK
017	27,442.02	24,916.73	1363.53 CP
018	30,245.28	28,100.10	1363.63 MPAS
019	30,245.28	28,100.10	1363.63 MPAS
020	30,245.28	28,100.10	1363.63 MPAS
021	30,245.28	28,100.10	1363.63 MPAS
022	30,245.28	28,100.10	1363.63 MPAS
023	30,245.28	28,100.10	1363.63 MPAS
024	30,245.28	28,100.10	1363.63 MPAS
025	30,245.28	28,100.10	1363.63 MPAS
026	30,245.28	28,100.10	1363.63 MPAS
027	30,245.28	28,100.10	1363.63 MPAS
028	30,245.28	28,100.10	1363.63 MPAS
029	30,245.28	28,100.10	1363.63 MPAS
030	30,245.28	28,100.10	1363.63 MPAS
031	30,245.28	28,100.10	1363.63 MPAS
032	30,245.28	28,100.10	1363.63 MPAS
033	30,245.28	28,100.10	1363.63 MPAS
034	30,245.28	28,100.10	1363.63 MPAS
035	30,245.28	28,100.10	1363.63 MPAS
036	30,245.28	28,100.10	1363.63 MPAS
037	30,245.28	28,100.10	1363.63 MPAS
038	30,245.28	28,100.10	1363.63 MPAS
039	30,245.28	28,100.10	1363.63 MPAS
040	30,245.28	28,100.10	1363.63 MPAS
041	30,245.28	28,100.10	1363.63 MPAS
042	30,245.28	28,100.10	1363.63 MPAS
043	30,245.28	28,100.10	1363.63 MPAS
044	30,245.28	28,100.10	1363.63 MPAS
045	30,245.28	28,100.10	1363.63 MPAS
046	30,245.28	28,100.10	1363.63 MPAS
047	30,245.28	28,100.10	1363.63 MPAS
048	30,245.28	28,100.10	1363.63 MPAS
049	30,245.28	28,100.10	1363.63 MPAS
050	30,245.28	28,100.10	1363.63 MPAS

SS POINTS			
Point	Northing	Easting	Desc.
0001	27,961.51	26,162.88	IN-20
0002	28,021.61	26,162.88	IN-20
0003	28,204.87	26,162.76	IN-1
0004	27,428.63	25,857.52	IN-20
0005	27,726.76	26,807.52	IN-20
0006	27,726.76	26,807.52	IN-1
0007	27,881.28	25,857.52	IN-1
0008	27,881.28	25,857.52	IN-1
0009	28,336.81	25,857.52	IN-1





BAUGHMAN COMPANY
 315 E. St.
 Wichita, KS 67211
 316-262-7271
 BaughmanCo.com

COORDINATES

SANITARY SEWER IMPROVEMENTS
 PROJECT NUMBER: 458-2020-016815
 DESIGN: DMV - SHAWN JAK
 DATE: June 3, 2022

SHEET **15** OF **16**