

AS-BUILT PLANS

PRIVATE PROJECT
SANITARY SEWER
to serve

Airport Industrial Park Addition - Lot 15A

Wichita, KS 1621 S Hoover Ct

Paul Gunzelman P.E. Interim City Engineer

Project Number: PPS-2022-035883

(53030982)

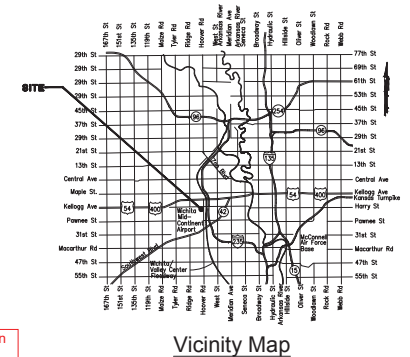
Baughman No.: 23-07-E543

Contractor: McCullough Excavation
Inspector: James Raiston
Baughman Co.

As-Built by: JAR
As-Built Date: 07SEP23

8" SDR-35 PVC = NorthernPipe
Concrete Structure = McPherson Concrete
Frame/Lid = Neenah Foundry

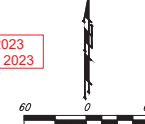
Construction Start Date: July 25, 2023
Construction End Date: August 3, 2023



Vicinity Map

Sheet Index

Title Sheet	1
Line 1	2
Manhole Detail	3
Manhole Lid Detail	4
Copy of Plat	5



Benchmarks

SITE BENCHMARK #1
Chiseled square on Top of Inlet
Elevation=1299.50 (NAVD88)

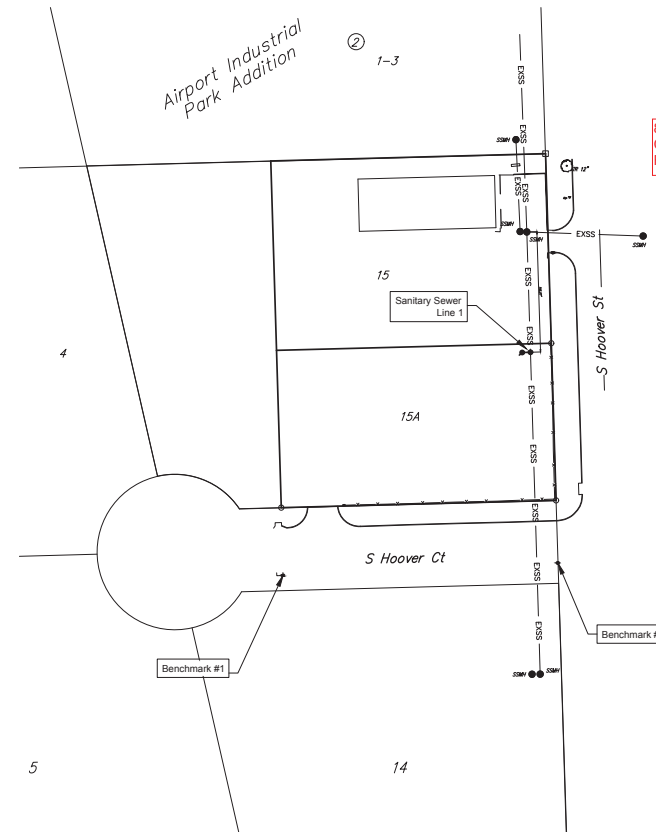
SITE BENCHMARK #2
Chiseled cross on Top of Curb
Elevation=1301.21 (NAVD88)

GENERAL NOTES:

- The Contractor shall comply with all applicable safety regulations. All construction shall be completed following current City Standard Specifications and special Provisions.
- Contractor will be required to provide notice to utility companies a minimum of seventy-two (72) hours prior to any excavation, as follows:
Kansas One-Call 687-2470
The Contractor must notify the following in case of an emergency:

AT&T	1-800-248-6464
Black Hills Energy	1-800-694-8889
City of Wichita Water & Sewer	1-316-219-8821
City of Wichita Stormwater	1-316-298-4000
City of Wichita Traffic	1-316-268-4034
Cox Communications	1-888-249-3530
Kansas Gas Service	1-888-452-4950
Evergy Energy	1-800-544-4857
- Utility service lines, poles, etc. are to be adjusted as necessary by others prior to construction unless the plans specifically call for their adjustment by the Contractor or unless the plans specifically identify a utility to be adjusted by its owner during construction. Existing utilities and their location, as shown on the plans, represent the best information obtainable for design. The Contractor will be required to work around existing utilities within the right-of-way which do not conflict with proposed construction.
- Rubble from the removal of miscellaneous structures and excess excavation which is to be wasted shall be disposed of on sites to be provided by the Contractor. These sites shall be approved by the Engineer as to suitability, appearance and site location. Locations, in the opinion of the Engineer, that will leave and unsightly appearance will not be approved. All disposal sites must be approved by the Kansas Department of Health and Environment. Material to be stockpiled or disposed of in a flood plain would require a Kansas State Board of Agriculture permit. Any material dumped in waters of the United States or wetlands is subject to U.S. Corps of Engineers permitting regulations. Any material buried or stockpiled beyond approved construction limits will require additional archaeological investigations unless buried in a previously approved borrow location.
- Trees and shrubs in public right-of-way which are in direct conflict with proposed new construction shall be removed by the Contractor with the City Engineer's approval. Trees and shrubs which are not in direct conflict with proposed new construction shall be saved and protected from damage.
- The Contractor shall give all property owners and/or tenants of developed property abutting the construction of this project a minimum of ten (10) days notice prior to start of construction.
- The Contractor shall be responsible for preserving property irons. The Contractor will be required to re-establish any property irons which are damaged or destroyed by his construction operations. Such irons shall be re-established by a licensed land surveyor in accordance with state laws.
- If traffic will be impacted by construction, a traffic control plan must be submitted and approved by the project engineer before construction can begin. The Contractor shall be responsible for all traffic control measures to facilitate construction. All construction zone markings and signage shall conform to the latest version of the Manual on Uniform Traffic Control Devices (MUTCD) as published by the US Dept. of Transportation, Federal Highway Administration. All costs associated with construction markings and signage shall be the Contractor's responsibility.
- All elevations shown are NAVD 88.
- All areas disturbed during construction that will not be under proposed pavement shall be restored to match existing conditions.
- City Maintenance of sanitary sewer mains ends at last structure within the easement or right-of-way.
- All stubs and capped pipes shall be located with green plastic tape in the same manner as risers.
- Contractor shall limit the extent of trench open overnight and weekends to less than 50 feet.
- Connecting to Existing Manholes:
Prior to laying sewer lines using existing stubs in existing manholes, the Contractor shall expose and verify the elevation, grade and alignment of existing stubs and notify the Engineer of any deviation from the plans. Where the stub is unusable due to elevation, grade or alignment, the Contractor shall remove the stub and plug the hole, and reshape the existing manhole invert to provide smooth flow. Where connecting to an existing manhole that does not have an existing stub, the Contractor shall core cut into existing manhole wall to make connection using approved water stop gasket, and reshape the existing manhole invert to provide smooth flow. The cost to connecting to existing manholes is incidental to the project.
- Contractor shall provide positive drainage away from all manhole covers.
- The Contractor shall prevent any construction debris from entering the existing sanitary sewer during construction.
- Any over excavation from manhole and pipe removal shall be backfilled with AB-3 compacted to 90-95% ASTM D698.
- The Contractor shall prevent from damage and support existing utilities through construction as approved by the utility owner and the Engineer at the contractors expense.
- Contractor shall grade around exposed manholes at a 1:1 slope. Manholes set lower than existing grade shall have a 9" berm constructed around manhole to prevent infiltration into sanitary sewer system. Cost of dirt, labor, equipment, etc. to be incidental to cost of manhole.
- All areas disturbed during construction shall be seeded, mulched, and fertilized as follows (Permanent Seeding):
Seed: Kansas Premium Fescue Blend 8 lbs/1000 sq. ft.
Mulch: Prairie Hay; 2 tons/acre
Fertilizer: 12-24-12; 850 lbs./acre
All costs associated with seeding, mulching, and fertilizing shall be included in bid term "Seeding". All seeding operations shall conform to City of Wichita Standard Specifications.
- The Contractor shall not begin work on the project until the Project Inspector is assigned and on site. Any work completed without inspection will be required to be uncovered for inspection at the Contractor's expense.
- All existing and proposed erosion control measures including silt fences, erosion control mat, straw bales, inlet barriers, and const. entrance shall be maintained throughout construction by the contractor and until project is accepted by the City of Wichita. The on-site engineer shall complete weekly reports on the status of erosion control measures. The contractor shall be required to comply with maintenance and/or replacement of erosion control measures as determined by the on-site engineer until project is accepted by City of Wichita. Maintenance and/or replacement of erosion control measures to be paid by U.S. bid item "Site Restoration".
- See the City of Wichita Construction Specifications for construction, installation requirements for this project.
- The Contractor shall notify the consultant engineer and Dawnita Reinhardt at 316-550-0740 with the City of Wichita with the anticipated construction start date and notify them of project completion.

5045A
SWI-06



APPROVED AS NOTED
BY WICHITA PUBLIC WORKS
ENGINEERING DIVISION

Engineering approved by Shawn Melliss on 06/16/2023

Utilities approved by Deb Arcy on 06/16/2023

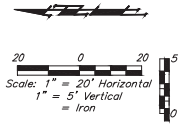
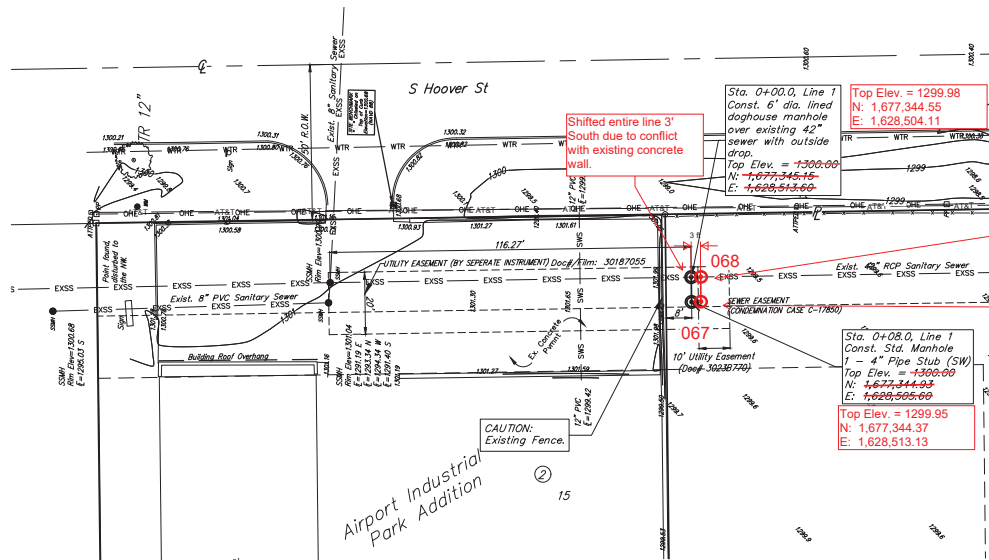
NOTE TO CONTRACTORS

Inspection and testing for this project is to be provided by a Licensed Consulting Engineering Firm under contract with the Owner/Developer. Said inspection to be in accordance with the City of Wichita standard construction engineering practices and certified by a Licensed Professional Engineer in the state of Kansas. No work shall be performed by the Contractor without such inspection nor shall any work be commenced without written authorization by City Engineering. All Construction and Materials shall comply with the current City of Wichita Specifications and Standards and Special Provisions (on file and available at Wichita.gov).

An approved copy of these plans signed by City staff are required on-site.

June 13, 2023

BAUGHMAN COMPANY
315 Ellis St. Wichita, KS 67211 316-262-7271
BaughmanCo.com



6' Dia. Doghouse Manhole Sta. 0+00
182' North Intersection Hoover Ct and Hoover St.
88' West CL of Hoover St.

Std. Manhole Sta. 0+08
182' North Intersection Hoover Ct and Hoover St.
76' West CL of Hoover St.

Shifted entire line 3'
South due to conflict
with existing concrete
wall.

Sta. 0+00.0, Line 1
Const. 6' dia. lined
doghouse manhole
over existing 42"
sewer with outside
drop.
Top Elev. = 1299.00
N: 1,677,345.15
E: 1,628,513.66

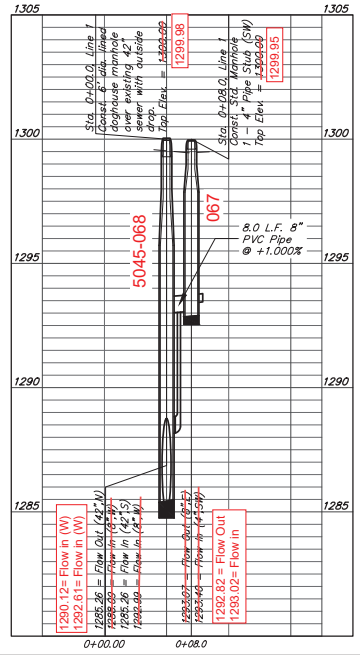
Top Elev. = 1299.98
N: 1,677,344.55
E: 1,628,504.11

Sta. 0+08.0, Line 1
Const. Std. Manhole
1' = 4" Pipe Stub (SW)
Top Elev. = 1298.00
N: 1,677,344.93
E: 1,628,505.00

Top Elev. = 1299.95
N: 1,677,344.37
E: 1,628,513.13

CAUTION:
Existing Fence.

Airport Industrial
Park Addition



NUMBER	TYPE	LOCATION			STATION/ DIRECTION	FLOWLINE OF MAIN	END OF 4" PIPE	FOR INFORMATION ONLY	
		LOT	BLOCK	LINE				APPROX. LENGTH OF 4" PIPE	
							VERTICAL	HORIZONTAL	
1	4" Stub	15	A	1	0+08.00/LT	1292.82	1293.02	n/a	5'

DAVID MACDERMID
LICENSED PROFESSIONAL ENGINEER
KANSAS

BAUGHMAN COMPANY

315 Ellis St.
Wichita, KS 67211
316-262-7271
BaughmanCo.com

Airport Industrial Park Add

SS Line 1

Sanitary Sewer Improvements

PROJECT NUMBER: 22-10-E336
DESIGN: NBW DRAWN: PDM
DATE: June 13, 2023

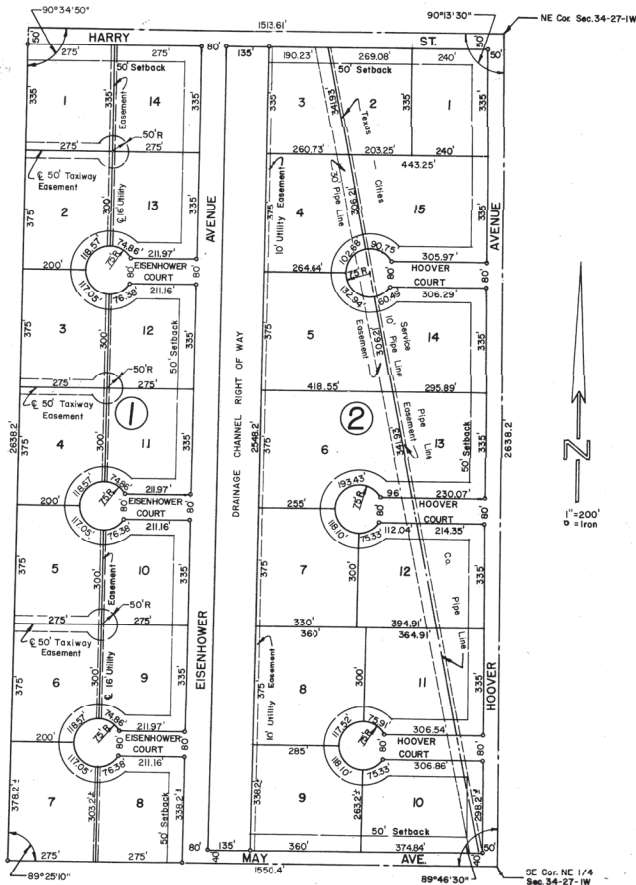
SHEET **2** OF **5**

File: E:\Projects\Airport Industrial Park Lot 15 Sanitary 22-10-E336\Engineering\Phase 1\PS\PS2.dwg

D 3-15

AIRPORT INDUSTRIAL PARK

WICHITA, SEDGWICK COUNTY, KANSAS



Approved by the Board of City Commissioners this 10th day of October, 1964.

STATE OF KANSAS) SS
COUNTY OF SEDGWICK)

I, Kenneth O. Taylor, Civil Engineer in that I have surveyed and platted "AIRPORT INDUSTRIAL PARK",

The east 92 acres of the NE 1/4 of Section 11, Township 22S, Range 15E, Sedgwick County, Kansas, west 1122.93 feet thereof.

**FOR REFERENCE ONLY
NOT TO SCALE**

Know all men by these presents that I, Kenneth O. Taylor, Civil Engineer, do hereby certify that the plat of "AIRPORT INDUSTRIAL PARK", Sedgwick County, Kansas, is correct and true to the original survey. The streets are hereby dedicated to and for the use of the public. The drainage channels are hereby dedicated to and for the use of the public for drainage purposes.

STATE OF KANSAS) SS
COUNTY OF SEDGWICK)

Be it remembered that on this 29th day of October, 1964, before me, a Notary Public in and for said county and state, came Dale Fry and Betty Fry, husband and wife, to me personally known to be the same persons who executed the foregoing instrument of writing and duly acknowledged the execution of same. In testimony whereof, I have hereunto set my hand and affixed my notarial seal the day and year above written.

My Commission expires November 29, 1964.

Know all men by these presents that Hayville State Bank, a corporation, mortgagee of the property described in the Civil Engineer's Certificate does hereby consent to the platting of "AIRPORT INDUSTRIAL PARK", Wichita, Sedgwick County, Kansas.

ATTEST: Cal W. Hout Jr.
Notary Public

STATE OF KANSAS) SS
COUNTY OF SEDGWICK)

Be it remembered, that on this 2nd day of NOVEMBER, A.D., 1964, before me the undersigned, a Notary Public in and for the county and Hayville State Bank, a corporation, to me personally known to be the same person who executed the within instrument as Executive Vice President and Cashier of said corporation, and such person duly acknowledged the execution of the same as Executive Vice President and Cashier, for and on behalf of, and as the act and deed of said corporation.

My Commission expires AUGUST 1, 1967.

This plat of "AIRPORT INDUSTRIAL PARK", Wichita, Sedgwick County, Kansas, has been approved by the Wichita-Sedgwick County Metropolitan Area Planning Commission, Wichita, Kansas, and is hereby transmitted to the Board of Commissioners of the City of Wichita, Kansas, with the recommendation that such plat be approved as proposed.

Dated this 15th day of OCTOBER, 1964.

WICHITA-SEDGWICK COUNTY METROPOLITAN AREA PLANNING COMMISSION

Cal W. Hout Jr., Chairman
C. Bickler, Secretary

Approved by the Board of County Commissioners this 16th day of December, 1964.

Clayton P. Reed, Chairman
John A. ..., Commissioner
..., Commissioner

W. O. Williams
County Clerk

STATE OF KANSAS) SS
COUNTY OF SEDGWICK)

This is to certify that this instrument was filed for record in the Register of Deeds Office on the 12 day of December, 1964, at 4:10 o'clock, P.M., and is duly recorded.

Paul E. Weising
Register of Deeds
Paul Hilbert
Deputy

302

Plat Com. No. M5E1P313
Released at " " F 28 p 1080 Restrictive Comments F 251 pp 229

DAVID MERRIFIELD
LICENSED
06/18/2023
KANSAS
PROFESSIONAL ENGINEER

BAUGHMAN COMPANY
315 Ellis St.
Wichita, KS 67211
316-262-7271
BaughmanCo.com

Airport Industrial Park Add
PLAT

Sanitary Sewer Improvements

PROJECT NUMBER:
22-10-E336

DESIGN: NBW DRAWN: PDM

DATE: June 13, 2023

SHEET OF
5 5

D 3-15

File: E:\Projects\Airport Industrial Park Lot 15 Summary 22-10-E336\Engineering\Phase 1\PS1\DWG