



SANITARY SEWER PLANS FOR COURTYARDS AT THE MOORINGS PHASE 1

0003
MKEC Engineering
All Rights Reserved
www.mkec.com

These drawings and their contents, including but not limited to, all drawings, designs, or plans are the intellectual property of MKEC Engineering (MKEC), and may not be used or reproduced in any way without the express consent of MKEC.

TITLE SHEET

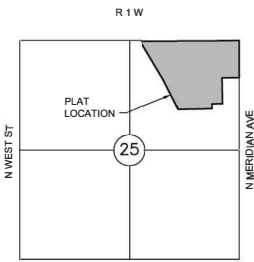
PROJECT NO.	468-2022-024794	
DATE	JAN 2023	
SCALE	1"=150'	
DESIGNED	DFL	
DRAWN	LM	
CHECKED	SPE	
NO.	REVISION	DATE
SHEET NO.		
01 OF 23		

SANITARY SEWER TO SERVE COURTYARDS AT THE MOORINGS

PROJECT NO. 468-2022-024794
THE CITY OF WICHITA, KANSAS
GARY JANZEN, P.E. - CITY ENGINEER
ORG CODE 47266822
MUNIS NO. E2070

Inspector: Daniel Swinging
Contractor: Nowak Construction
Company: City of Wichita
Submitted By: Steven Lowe
Notes: SS changes on sheets 6, 7, & 10.

As-Built
Stubs & Risers
Release Date (for connection purposes only): 11/01/2023
Completion Date:
pdf: apr 11/2/2023



VICINITY MAP
No Scale

INDEX TO DRAWINGS

SHEET NO.	DESCRIPTION
01	TITLE SHEET
02-04	SAN DETAILS
05-07	LINE 1
08-09	LINE 2
10	LINE 3
11	LINE 4 & LINE 5
12	SERVICE LINES
13-14	BUBBLE MAP & TABLE
15-19	BMP SHEETS
20-23	FINAL PLAT

BENCHMARKS

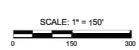
CP100	N:1714418.007	E:1638538.082	EL:1328.839
PK-NAIL			
CP101	N:1713560.118	E:1638541.17	EL:1329.886
CHISELED "X"			
BM 101	N:1713560.118	E:1638541.17	EL:1329.886(8)
CHISELED "X"			

DATUM

The Horizontal Datum is based on the Kansas Coordinate System of 1983, NAD83(11), EPOCH 2010.0000. South Zone. Coordinates shown have been modified to the ground using a combined adjustment factor of 1.000120144. State Plane coordinates can be calculated by multiplying the shown values by 0.99986.

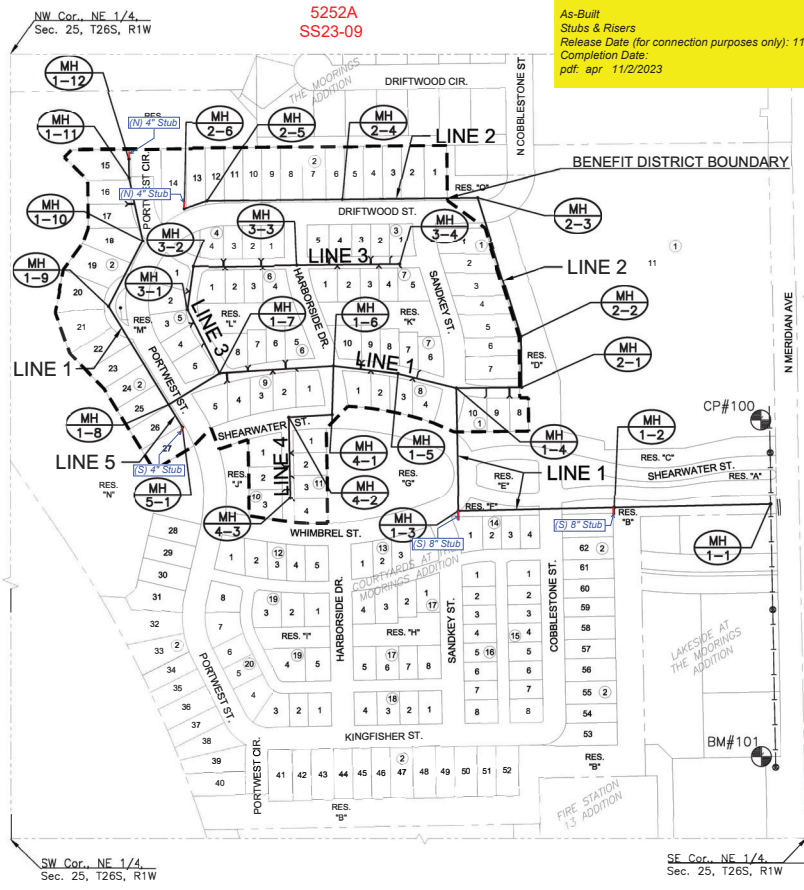
NOTE

All Control Points shown have elevations established using standard surveying procedures and can be used as temporary benchmarks. When using a Control point as a temporary benchmark, it is recommended that cross-checks be made to other control points or benchmarks to confirm elevations prior to use.



PROJECT: 02/01/2019/02/27/PERFECTION_COURTYARDS AT THE MOORINGS/2022 COURTYARDS AT THE MOORINGS/468-2022-024794

- THE CONTRACTOR SHALL COMPLY WITH ALL APPLICABLE SAFETY REGULATIONS. ALL CONSTRUCTION SHALL BE COMPLETED FOLLOWING CURRENT CITY STANDARDS SPECIFICATIONS AND SPECIAL PROVISIONS.
- CONTRACTOR WILL BE REQUIRED TO PROVIDE NOTICE TO UTILITY COMPANIES A MINIMUM OF SEVENTY-TWO (72) HOURS PRIOR TO ANY EXCAVATION. AS FOLLOWS:
KANSAS ONE-CALL 687-2470
THE CONTRACTOR MUST NOTIFY THE FOLLOWING IN CASE OF AN EMERGENCY:
AT&T 1-800-248-8484
BLACK HILLS ENERGY (GAS) 1-800-884-8989
CITY OF WICHITA WATER & SEWER 1-316-219-8201
CITY OF WICHITA STORMWATER 1-316-268-4090
CITY OF WICHITA TRAFFIC 1-316-268-4054
COX COMMUNICATIONS 1-888-249-3330
KANSAS GAS SERVICE 1-888-462-4960
EVERGY 1-800-544-4657
- UTILITY SERVICE LINES, POLES, ETC. ARE TO BE ADJUSTED AS NECESSARY BY OTHERS PRIOR TO CONSTRUCTION UNLESS THE PLANS SPECIFICALLY CALL FOR THEIR ADJUSTMENT BY THE CONTRACTOR OR UNLESS THE PLANS SPECIFICALLY IDENTIFY A UTILITY TO BE ADJUSTED BY ITS OWNER DURING CONSTRUCTION. EXISTING UTILITIES AND THEIR LOCATION, AS SHOWN ON THE PLANS, REPRESENT THE BEST INFORMATION OBTAINABLE FOR DESIGN. THE CONTRACTOR WILL BE REQUIRED TO WORK AROUND EXISTING UTILITIES WITHIN THE RIGHT-OF-WAY WHICH DO NOT CONFLICT WITH PROPOSED CONSTRUCTION.
- RUBBLE FROM THE REMOVAL OF MISCELLANEOUS STRUCTURES AND EXCESS EXCAVATION WHICH IS TO BE WASTED SHALL BE DISPOSED OF ON SITES TO BE PROVIDED BY THE CONTRACTOR. THESE SITES SHALL BE APPROVED BY THE ENGINEER AS TO SUITABILITY, APPEARANCE AND SITE LOCATION LOCATIONS. IN THE OPINION OF THE ENGINEER, THAT WILL LEAVE AN UNSIGHTLY APPEARANCE WILL NOT BE APPROVED. ALL DISPOSAL SITES MUST BE APPROVED BY THE KANSAS DEPARTMENT OF HEALTH AND ENVIRONMENT. MATERIAL EITHER STOCKPILED OR DISPOSED OF IN A FLOOD PLAIN WILL REQUIRE A KANSAS STATE BOARD OF AGRICULTURE PERMIT. ANY MATERIAL DUMPED IN WATERWAYS OR WETLANDS IS SUBJECT TO U.S. CORPS OF ENGINEERS PERMITTING REGULATIONS. ANY MATERIAL BURIED OR STOCKPILED BEYOND APPROVED CONSTRUCTION LIMITS WILL REQUIRE ADDITIONAL ARCHAEOLOGICAL INVESTIGATIONS UNLESS BURIED IN A PREVIOUSLY APPROVED BORROW LOCATION.
- TREES AND SHRUBS IN PUBLIC RIGHT-OF-WAY WHICH ARE IN DIRECT CONFLICT WITH PROPOSED NEW CONSTRUCTION SHALL BE REMOVED BY THE CONTRACTOR WITH THE CITY ENGINEERS APPROVAL. TREES AND SHRUBS WHICH ARE NOT IN DIRECT CONFLICT WITH PROPOSED NEW CONSTRUCTION SHALL BE SAVED AND PROTECTED FROM DAMAGE.
- THE CONTRACTOR SHALL GIVE ALL PROPERTY OWNERS AND/OR TENANTS OF DEVELOPED PROPERTY ADJUTING THE CONSTRUCTION OF THIS PROJECT A MINIMUM OF TEN (10) DAYS NOTICE PRIOR TO START OF CONSTRUCTION.
- THE CONTRACTOR SHALL BE RESPONSIBLE FOR PRESERVING PROPERTY IRONS. THE CONTRACTOR WILL BE REQUIRED TO RE-ESTABLISH ANY PROPERTY IRONS WHICH ARE DAMAGED OR DESTROYED BY HIS CONSTRUCTION OPERATIONS. SUCH IRONS SHALL BE RE-ESTABLISHED BY A LICENSED LAND SURVEYOR IN ACCORDANCE WITH STATE LAWS.
- THE ENGINEERING DIVISION SHALL FIELD LOCATE WATER VALVES ONE TIME DURING CONSTRUCTION WHEN REQUESTED BY THE CONTRACTOR. IT SHALL BE THE CONTRACTORS RESPONSIBILITY TO PRESERVE SUCH FIELD LOCATIONS DURING THE CONSTRUCTION PROCESS. WATER VALVES, VALVE BOXES OR FIRE HYDRANTS DAMAGED DURING CONSTRUCTION SHALL BE REPAIRED BY CONTRACTOR AT HIS OWN EXPENSE. VALVE BOXES AND WATER METERS WITHIN THE PROJECT LIMITS SHALL BE ADJUSTED TO MATCH FIELD READINGS BY THE CONTRACTOR.
- TRAFFIC WILL BE IMPACTED BY CONSTRUCTION. A TRAFFIC CONTROL PLAN MUST BE SUBMITTED AND APPROVED BY THE CITY TRAFFIC ENGINEER AT THE MOORINGS BEFORE CONSTRUCTION CAN BEGIN. THE CONTRACTOR SHALL BE RESPONSIBLE FOR ALL TRAFFIC CONTROL MEASURES TO FACILITATE CONSTRUCTION. ALL CONSTRUCTION ZONE MARKINGS AND SIGNAGE SHALL CONFORM TO THE LATEST VERSION OF THE MANUAL ON UNIFORM TRAFFIC CONTROL DEVICES (MUTCD) AS PUBLISHED BY THE US DEPT. OF TRANSPORTATION, FEDERAL HIGHWAY ADMINISTRATION. ALL COSTS ASSOCIATED WITH CONSTRUCTION MARKINGS AND SIGNAGE SHALL BE THE CONTRACTORS RESPONSIBILITY.
- ALL AREAS DISTURBED DURING CONSTRUCTION THAT WILL NOT BE UNDER PROPOSED PAVEMENT SHALL BE SEEDED AND MULCHED. COST SHALL BE CONSIDERED SUBSIDIARY TO PROJECT SEEDING.
- CONTRACTOR SHALL LIMIT THE EXTENT OF TRENCH OPEN OVERNIGHT AND WEEKENDS TO LESS THAN 50 FEET.
- EXISTING UTILITIES AND THEIR LOCATION, AS SHOWN ON THE PLANS REPRESENT THE BEST INFORMATION OBTAINABLE FOR DESIGN. LOCATION INFORMATION HAS BEEN OBTAINED FROM THE VARIOUS COMPANIES AND IS EITHER FROM COMPANY UTILITY DRAWINGS OR COMPANY PROVIDED FIELD LOCATIONS. THE PLAN LOCATIONS SHOWN ARE NOT GUARANTEED. ADDITIONAL EXISTING UTILITIES MAY ALSO BE ENCOUNTERED.
- A PORTION OF EXCESS EXCAVATED MATERIAL SHALL BE MOUNDING AROUND MANHOLES WHICH EXTEND MORE THAN ONE (1) FOOT ABOVE THE EXISTING GROUND. SUCH MOUND SHALL BE CONSTRUCTED WITH NEW DEVELOPMENT A SIX (6) FOOT DIAMETER FLAT TOP WITH A 4 TO 1 SIDE SLOPES DOWN TO THE ORIGINAL GROUND. THE ELEVATION OF THE FLAT TOP OF THE MOUND SHALL BE 0.4 FOOT BELOW THE TOP OF THE MANHOLE.
- CONTRACTOR SHALL PROVIDE POSITIVE DRAINAGE AWAY FROM ALL MANHOLE COVERS.
- ALL STUBS AND PLUGGED PIPES SHALL BE LOCATED WITH GREEN PLASTIC TAPE IN THE SAME MANNER AS RISERS.
- CONNECTING TO EXISTING MANHOLES:
PRIOR TO LAYING SEWER LINES USING EXISTING STUBS IN EXISTING MANHOLES, THE CONTRACTOR SHALL EXPOSE AND VERIFY THE ELEVATION, GRADE AND ALIGNMENT OF EXISTING STUBS AND NOTIFY THE ENGINEER OF ANY DEVIATION FROM THE PLANS. WHERE CONNECTION TO AN EXISTING MANHOLE THAT DOES NOT HAVE AN EXISTING STUB ON THE STUB IS UNSAFE DUE TO ELEVATION GRADE OR ALIGNMENT, THE CONTRACTOR SHALL BORE CUT INTO EXISTING MANHOLE WALL TO MAKE CONNECTION USING APPROVED WATER STOP GASKET AND REPAIR THE EXISTING MANHOLE INVERT TO PROVIDE SMOOTH FLOW. THE COST TO CONNECTING TO EXISTING MANHOLES IS INCIDENTAL TO THE PROJECT.
- THE CONTRACTOR SHALL PREVENT ANY CONSTRUCTION DEBRIS FROM ENTERING THE EXISTING SANITARY SEWER DURING CONSTRUCTION.
- ALL TRAFFIC CONTROL DEVICES IN THE WORK ZONE (INCLUDING MARKINGS AND SIGNS) AND THEIR INSTALLATION AND MAINTENANCE SHALL COMPLY WITH THE LATEST EDITION OF THE MANUAL ON UNIFORM TRAFFIC CONTROL DEVICES (MUTCD). ALL TRAFFIC CONTROL DEVICES IN THE TRAVELED WAY OR CLEAR ZONE SHALL BE CRASHWORTHY (NCHRP REPORT 350 OR MASH COMPLIANT).
<http://www.fhwa.dot.gov/construction/trafficcontrol/signs/signs.htm>
- ALL CONSTRUCTION EQUIPMENT, INCLUDING VEHICLES, MATERIALS, AND DEBRIS, SHALL BE STORED OUTSIDE OF THE CLEAR ZONE, WHERE THIS CANNOT BE ACHIEVED THE CONTRACTOR SHALL PLACE APPROPRIATE SIGNS, SUBJECT IDENTIFIERS, AND/OR BARRICADES IN COMPLIANCE WITH MUTCD.
- EXCEPT WHEN REQUIRED FOR SAFETY, TRAFFIC CONTROL SHALL NOT BLOCK ANY LANES OR SIDEWALKS WHEN WORK IS NOT BEING PERFORMED.
- SAND BACKFILL: IF SUITABLE SAND MATERIAL IS FOUND ON SITE FOR BACKFILL, CONTRACTOR MAY BE ALLOWED TO USE ON SITE MATERIAL AT THE DISCRETION OF THE PROJECT ENGINEER. IF THE PROJECT ENGINEER DETERMINES THE SITE MATERIAL IS NOT SUITABLE, THEN CONTRACTOR MUST HAIL IN FILL SAND. IN THE EVENT NOT ENOUGH SUITABLE MATERIAL FOR BACKFILL IS FOUND ON-SITE, THE BALANCE SHALL BE PROVIDED BY CONTRACTOR.
- DEVELOPER FOR THIS PROJECT IS:
PERFECTION SOUTHWEST PROPERTIES, LLC
443 N MAIZE RD
WICHITA, KS 67212
SCOTT LEHNER/ERSON ROKK
316.729.1900



Doc. NE 1/4
25, T26S, R1W

SE Cor. NE 1/4
Sec. 25, T26S, R1W

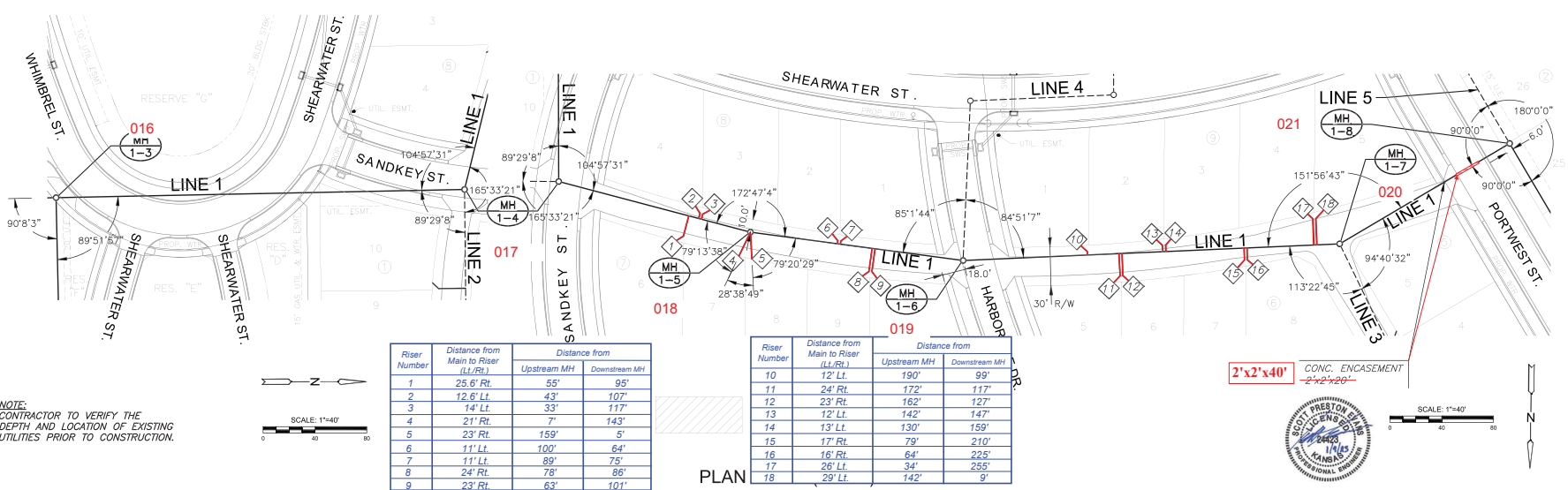


Construction Engineering Division
 1801 S. McLean Blvd., Suite B
 Wichita KS, 67213
 (316) 268-4027

Sanitary Sewer Riser Table

Project Name: WDS Collector_ WDS Ph 1 SWD 494_SS Ph 1_St & SW Imp Part A_St & SW Imp
Project Location: south of 53rd Street North, west of Meridian Avenue
Project No: 468-2022-024794
MUNIS No: E2070
Contractor: Nowak Construction Co., Inc.
Inspector: Daniel Swinger

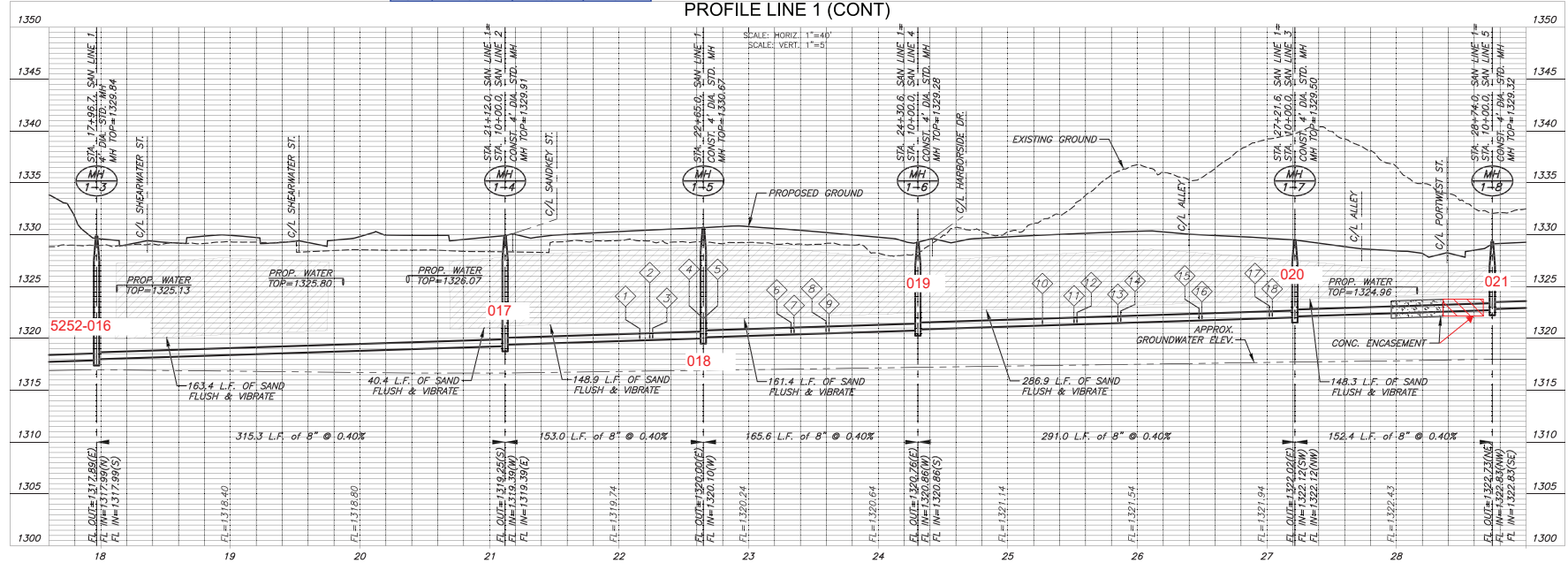
Riser No.	Line No.	Station	Distance from Main to Riser (Lt./Rt.)	Distance from		Comment
				Upstream MH	Downstream MH	
1	1	22+15.94	25.6 Rt.	55	95	
2	1	22+23.68	12.6 Lt.	43	107	
3	1	22+25.92	14.2 Lt.	33	117	
4	1	22+65.05	21.2 Rt.	7	143	MH Connection
5	1	22+65.05	23.0 Rt.	159	5	MH Connection
6	1	23+32.80	11.0 Lt.	100	64	
7	1	23+35.05	11.4 Lt.	89	75	
8	1	23+59.78	24.2 Rt.	78	86	
9	1	23+62.04	23.2 Rt.	63	101	
10	1	25+26.76	12.4 Lt.	190	99	
11	1	25+51.14	23.8 Rt.	172	117	
12	1	25+53.39	23.2 Rt.	162	127	
13	1	25+84.95	12.4 Lt.	142	147	
14	1	25+87.20	13.0 Lt.	130	159	
15	1	26+47.66	16.8 Rt.	79	210	
16	1	26+49.91	16.2 Rt.	64	225	
17	1	27+01.88	26.2 Lt.	34	255	
18	1	27+04.13	29.2 Lt.	142	9	
19	1	31+66.35	31.4 Lt.	9	272	MH Connection
20	1	31+66.35	29.2 Lt.	184	2	MH Connection
21	1	34+52.49	20.6 Lt.	74	89	
22	1	34+54.77	21.6 Lt.	62	101	
23	2	10+76.31	27.4 Rt.	93	69	
24	2	11+34.31	27.2 Rt.	36	126	
25	2	11+36.56	28.4 Rt.	22	140	
26	3	10+84.28	13.6 Lt.	101	75	
27	3	11+42.31	13.0 Lt.	47	129	
28	3	11+44.56	12.6 Lt.	32	144	
29	3	12+25.96	10.6 Lt.	70	36	
30	3	12+28.21	10.6 Lt.	56	50	MH Connection
31	3	13+67.50	20.8 Lt.	189	71	
32	3	13+69.75	20.6 Lt.	178	82	
33	3	13+71.40	16.4 Rt.	187	73	
34	3	13+73.75	14.8 Rt.	173	87	
35	3	14+63.50	22.8 Lt.	98	162	
36	3	14+65.75	20.6 Lt.	83	177	
37	3	14+67.40	13.0 Rt.	92	168	
38	3	14+69.65	12.6 Rt.	78	182	



Riser Number	Distance from Main to Riser (L/R)	Distance from	
		Upstream MH	Downstream MH
1	25' 6" Rt.	55'	95'
2	12' 6" Lt.	43'	107'
3	14' Lt.	33'	117'
4	21' Rt.	7'	143'
5	23' Rt.	159'	5'
6	11' Lt.	100'	64'
7	11' Lt.	89'	75'
8	24' Rt.	78'	86'
9	23' Rt.	63'	101'

Riser Number	Distance from Main to Riser (L/R)	Distance from	
		Upstream MH	Downstream MH
10	12' Lt.	190'	99'
11	24' Rt.	172'	117'
12	23' Rt.	162'	127'
13	12' Lt.	142'	147'
14	13' Lt.	130'	159'
15	17' Rt.	79'	210'
16	16' Rt.	64'	225'
17	26' Lt.	34'	255'
18	29' Lt.	142'	9'

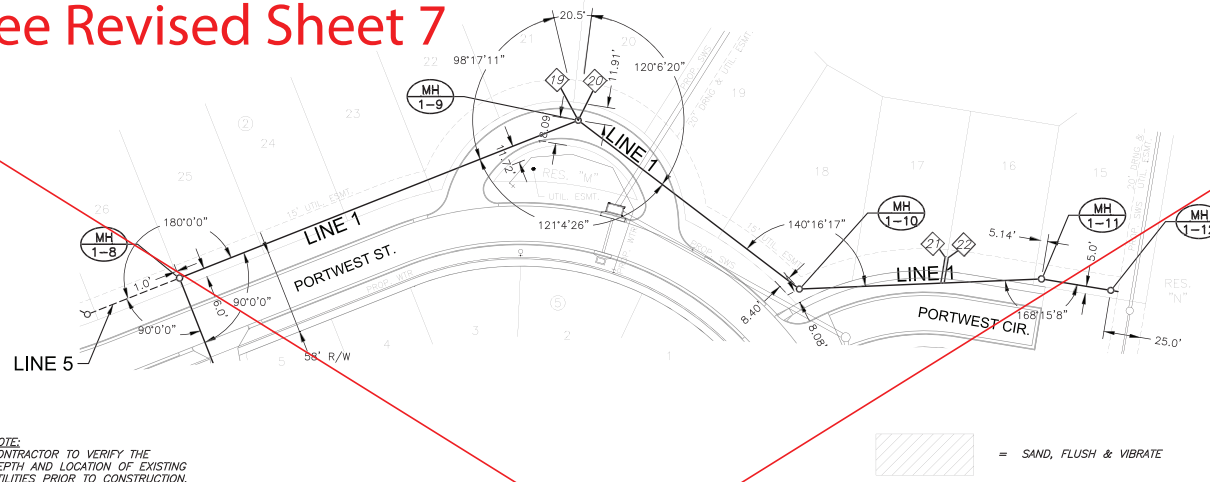
PLAN
PROFILE LINE 1 (CONT)



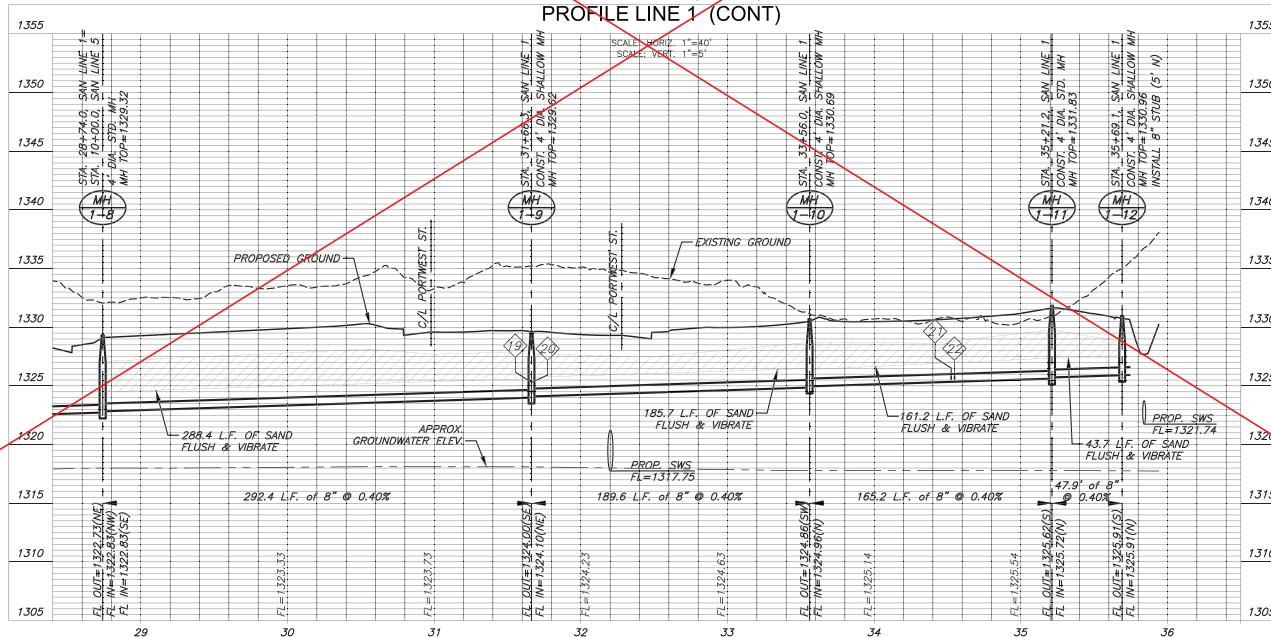
PROJECT LOCATION: 16300 W. 100TH ST., OVERLOOKING C/O. SANITARY LINE 1 (CONT. 1)

NOTE:
 CONTRACTOR TO VERIFY THE
 DEPTH AND LOCATION OF EXISTING
 UTILITIES PRIOR TO CONSTRUCTION.

See Revised Sheet 7



NOTE:
CONTRACTOR TO VERIFY THE
DEPTH AND LOCATION OF EXISTING
UTILITIES PRIOR TO CONSTRUCTION.



MKEC
Wichita, KS • 316-681-0820

COURTYARDS AT THE MOORINGS
PHASE 1

SANITARY SEWER PLANS FOR

©2023 MKEC Engineering
All Rights Reserved
These drawings and their contents, including but not limited to, all copyright, design, & other notices are the sole property of MKEC Engineering (MKEC), and may not be used or reproduced in any way without the express consent of MKEC.

SAN LINE 1 (CONT. 2)

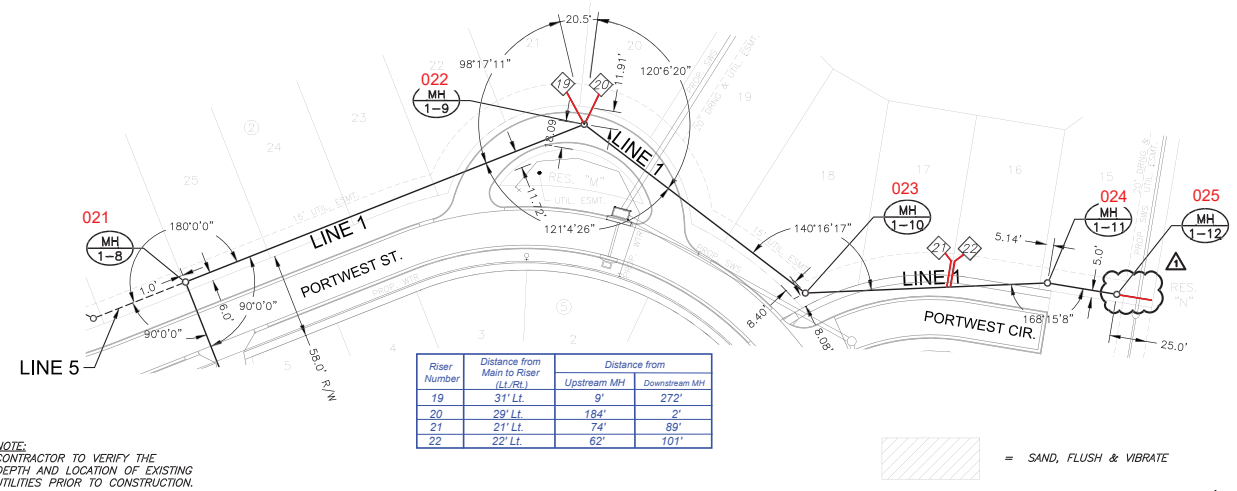
PROJECT NO.	468-2022-024784	
DATE	JAN 2023	
SCALE	1"=40'	
DESIGNED	DRAWN	CHECKED
DFL	LM	SPE

NO.	REVISION	DATE

SHEET NO. 07 OF 23

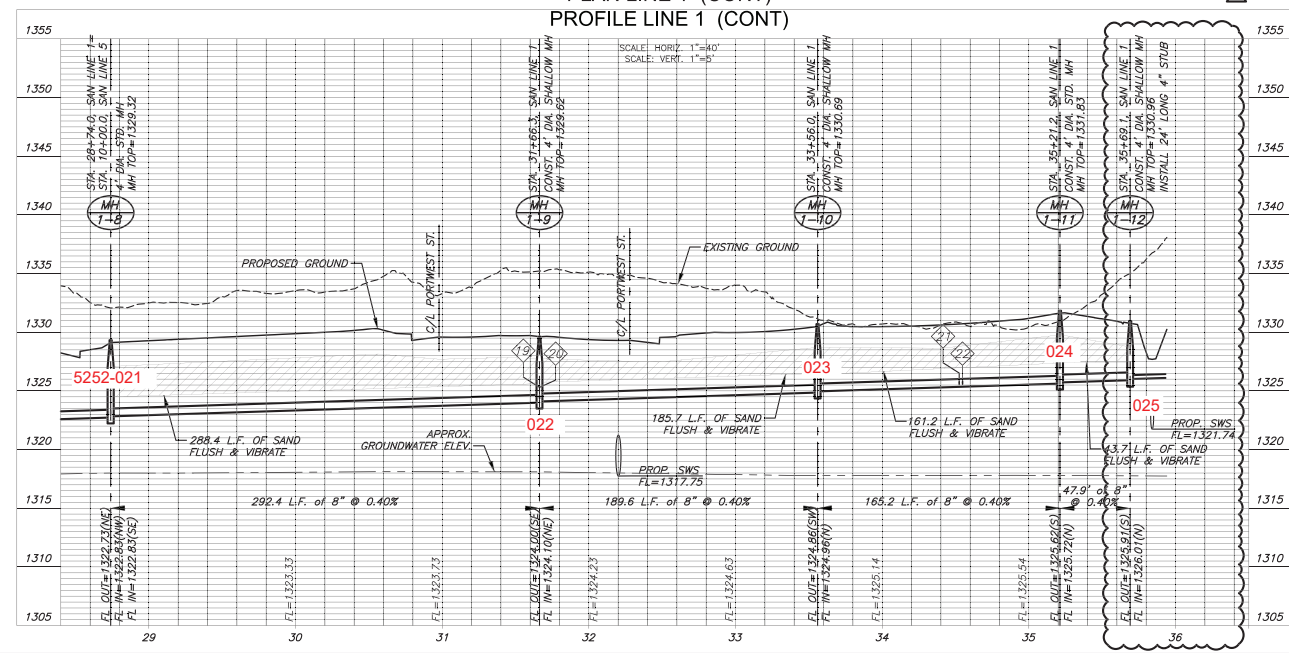
PORTWEST STUB, APR 28, 2023 @ 04:00 PM

PROJECT: 468-2022-024784 - SAN LINE 1 (CONT. 2) - COURTYARDS AT THE MOORINGS



NOTE:
CONTRACTOR TO VERIFY THE DEPTH AND LOCATION OF EXISTING UTILITIES PRIOR TO CONSTRUCTION.

PLAN LINE 1 (CONT)
PROFILE LINE 1 (CONT)



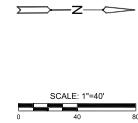
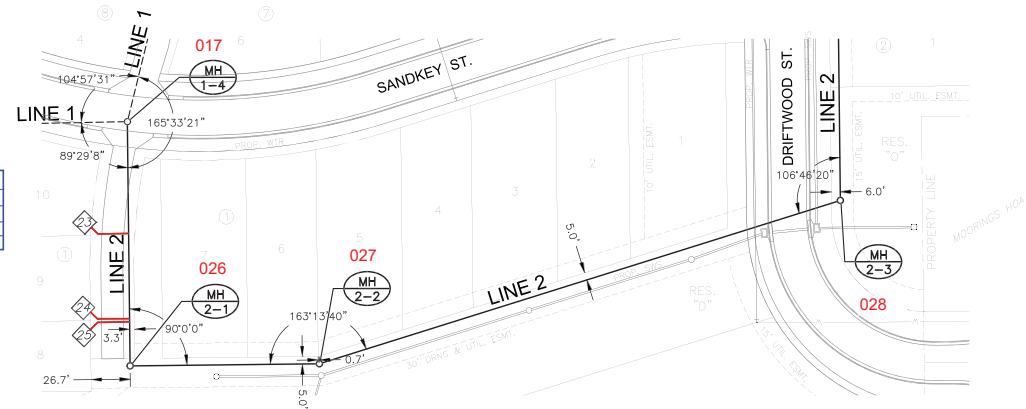
SANITARY SEWER PLANS FOR
COURTYARDS AT THE MOORINGS
PHASE 1

<small>©2023 MKEC Engineering All Rights Reserved www.mkec.com</small>											
<small>These drawings and their contents, including but not limited to, all copyright, design, & other notices are the sole property of MKEC Engineering (MKEC), and may not be used or reproduced in any way without the express consent of MKEC.</small>											
SAN LINE 1 (CONT. 2)											
PROJECT NO.	468-2022-024784										
DATE	JAN 2023										
SCALE	1"=40'										
DESIGNED	DRAWN										
DFL	LM										
CHECKED	SPE										
<table border="1"> <tr> <th>EXTENDED STUB</th> <th>DATE</th> </tr> <tr> <td> </td> <td> </td> </tr> <tr> <th>REV.</th> <th>REVISION</th> <th>DATE</th> </tr> <tr> <td> </td> <td> </td> <td> </td> </tr> </table>		EXTENDED STUB	DATE			REV.	REVISION	DATE			
EXTENDED STUB	DATE										
REV.	REVISION	DATE									
SHEET NO.											
07 OF 23											

10/22/22 (Rev. January 16, 2023) 9:03 AM



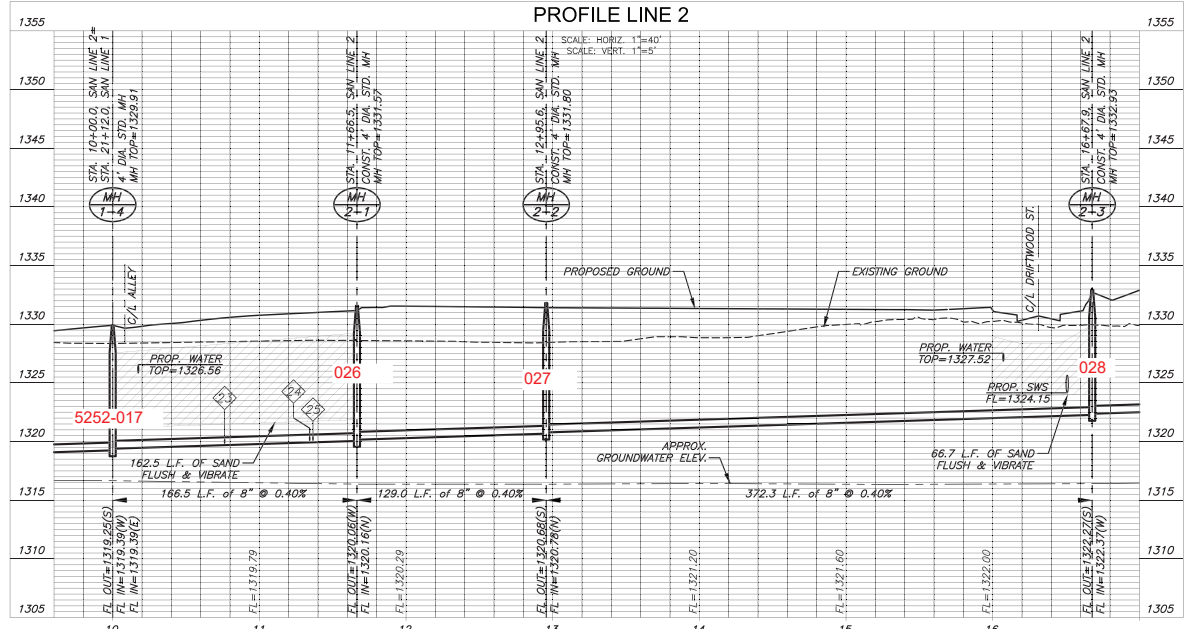
Riser Number	Distance from Main to Riser (L/R)	Distance from Upstream MH	Distance from Downstream MH
23	27' Rt.	93'	69'
24	27' Rt.	36'	126'
25	28' Rt.	22'	140'



NOTE:
CONTRACTOR TO VERIFY THE DEPTH AND LOCATION OF EXISTING UTILITIES PRIOR TO CONSTRUCTION.

= SAND, FLUSH & VIBRATE

**PLAN LINE 2
PROFILE LINE 2**



SANITARY SEWER PLANS FOR
COURTYARDS AT THE MOORINGS
PHASE 1

©2022
MKEC Engineering
All Rights Reserved
www.mkec.com
These drawings and their contents, including but not limited to, all copyright, design, & trade are the intellectual property of MKEC Engineering (MKEC), and may not be used or reproduced in any way without the express consent of MKEC.


SAN LINE 2

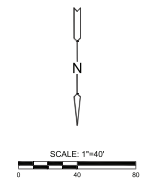
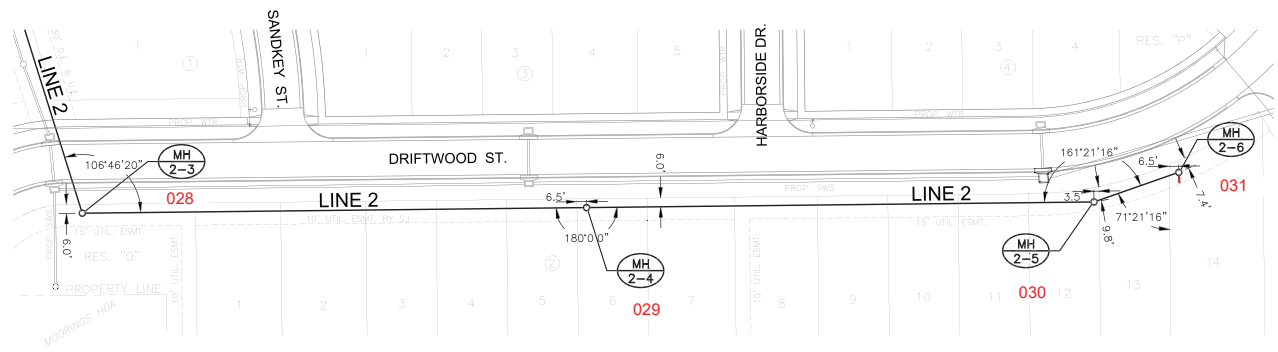
PROJECT NO.	468-2022-024794	
DATE	JAN 2023	
SCALE	1"=40'	
DESIGNED	DRAWN	CHECKED
DFL	LM	SPE

NO.	REVISION	DATE

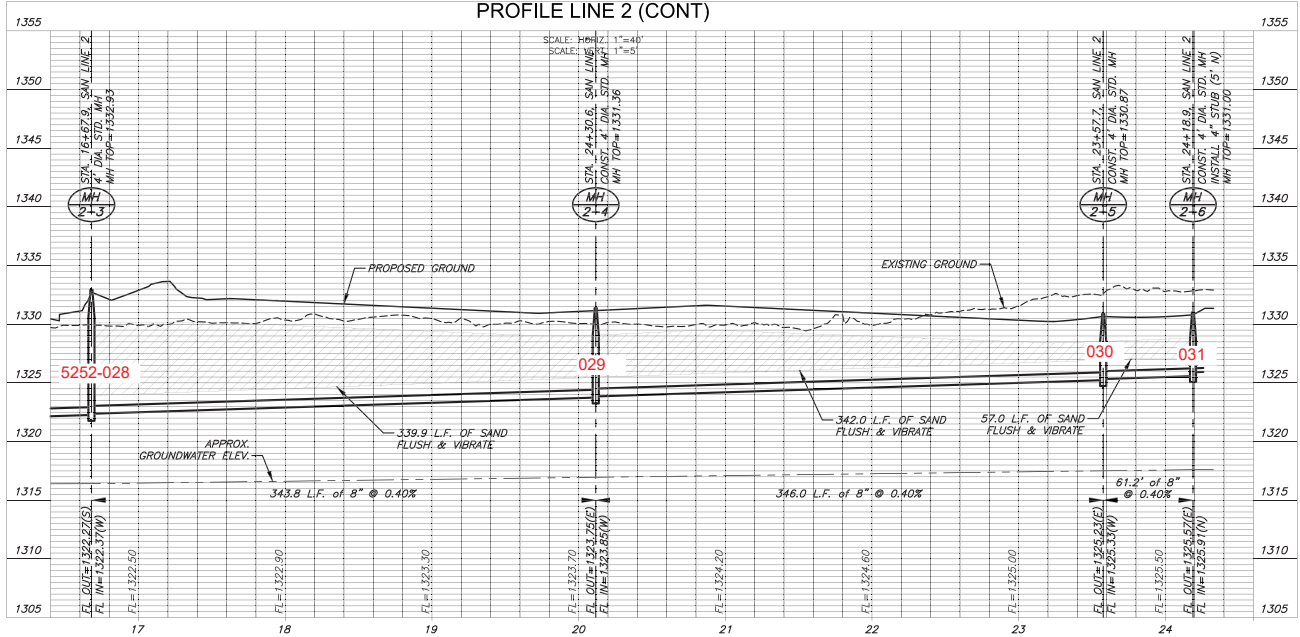
PROJECT: 468-2022-024794 - SANITARY SEWER MAINS AT MOORINGS COURT YARDS IN WINDSOR, ONTARIO

NOTE:
CONTRACTOR TO VERIFY THE DEPTH AND LOCATION OF EXISTING UTILITIES PRIOR TO CONSTRUCTION.

 = SAND, FLUSH & VIBRATE



**PLAN LINE 2 (CONT)
PROFILE LINE 2 (CONT)**



PROJECT: 468-2022-024794 - SANITARY SEWER MAINS AT MOORINGS COURT YARDS IN WINDSOR, ONTARIO

COURTYARDS AT THE MOORINGS
PHASE 1
SANITARY SEWER PLANS FOR

©2023
MKEC Engineering
All Rights Reserved
www.mkec.com
These drawings and their contents, including but not limited to, all copyright, design, & trade mark are the intellectual property of MKEC Engineering (MKEC), and may not be used or reproduced in any way without the express consent of MKEC.

SAN LINE 2 (CONT.)

PROJECT NO.	468-2022-024794
DATE	JAN 2023
SCALE	1"=40'
DESIGNED	DFL
DRAWN	LM
CHECKED	SPE

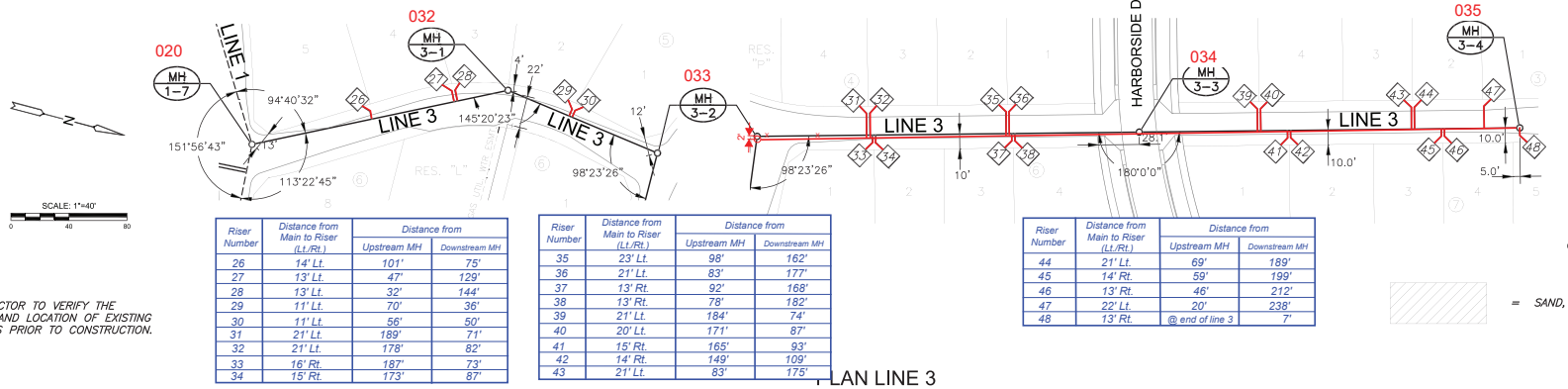
NO.	REVISION	DATE

SHEET NO. 09 OF 23



SANITARY SEWER PLANS FOR
COURTYARDS AT THE MOORINGS
 PHASE 1

<small>©2023 MKEC Engineering All Rights Reserved www.mkec.com</small>		
<small>These drawings and their contents, including but not limited to, all copyright, design, or other notices are the sole property of MKEC Engineering (MKEC), and may not be used or reproduced in any way without the express consent of MKEC.</small>		
SAN LINE 3		
PROJECT NO.	468-2022-024794	
DATE	JAN 2023	
SCALE	1"=40'	
DESIGNED	DRAWN	CHECKED
DFL	LM	SPE
NO.	REVISION	DATE
SHEET NO.		

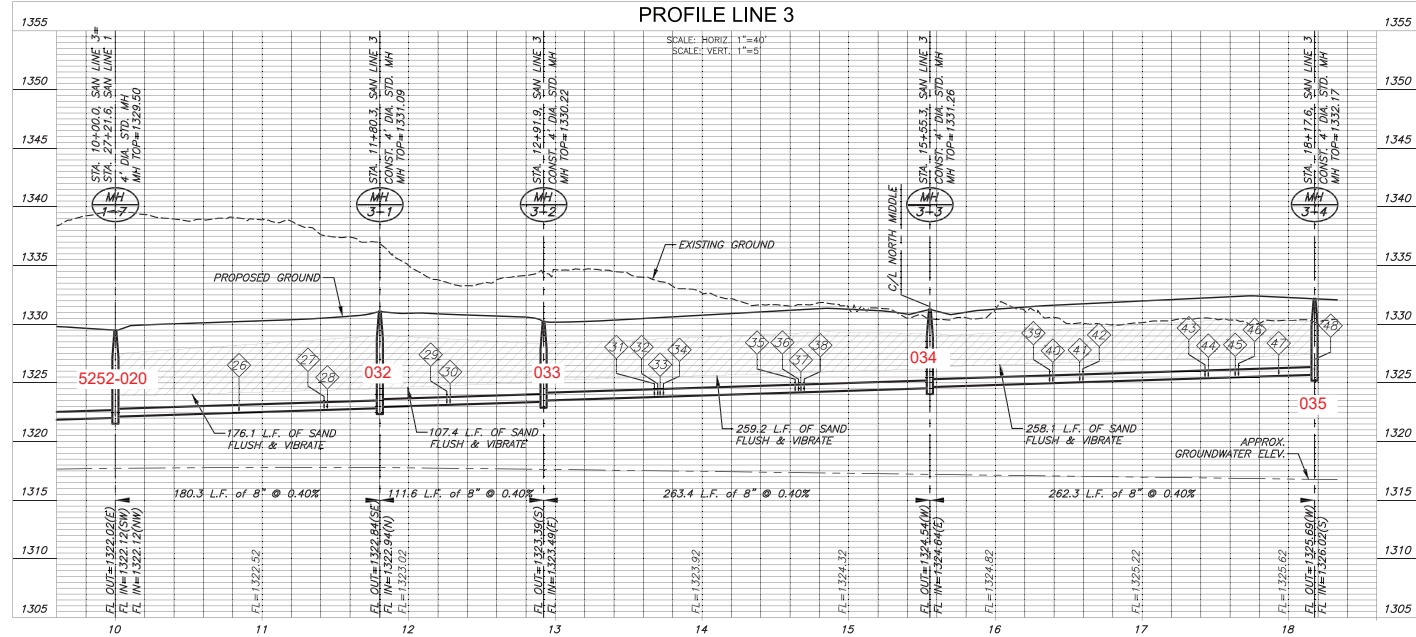


Riser Number	Distance from Main to Riser (L/Rt)	Distance from	
		Upstream MH	Downstream MH
26	14' Lt.	101'	75'
27	13' Lt.	47'	129'
28	13' Lt.	32'	144'
29	11' Lt.	70'	36'
30	11' Lt.	56'	50'
31	21' Lt.	189'	71'
32	21' Lt.	178'	82'
33	16' Rt.	187'	73'
34	15' Rt.	173'	87'

Riser Number	Distance from Main to Riser (L/Rt)	Distance from	
		Upstream MH	Downstream MH
35	23' Lt.	98'	162'
36	21' Lt.	83'	177'
37	13' Rt.	92'	168'
38	13' Rt.	78'	182'
39	21' Lt.	184'	74'
40	20' Lt.	171'	87'
41	15' Rt.	165'	93'
42	14' Rt.	149'	109'
43	21' Lt.	83'	175'

Riser Number	Distance from Main to Riser (L/Rt)	Distance from	
		Upstream MH	Downstream MH
44	21' Lt.	69'	189'
45	14' Rt.	59'	199'
46	13' Rt.	46'	212'
47	22' Lt.	20'	238'
48	13' Rt.	@ end of line 3	7'

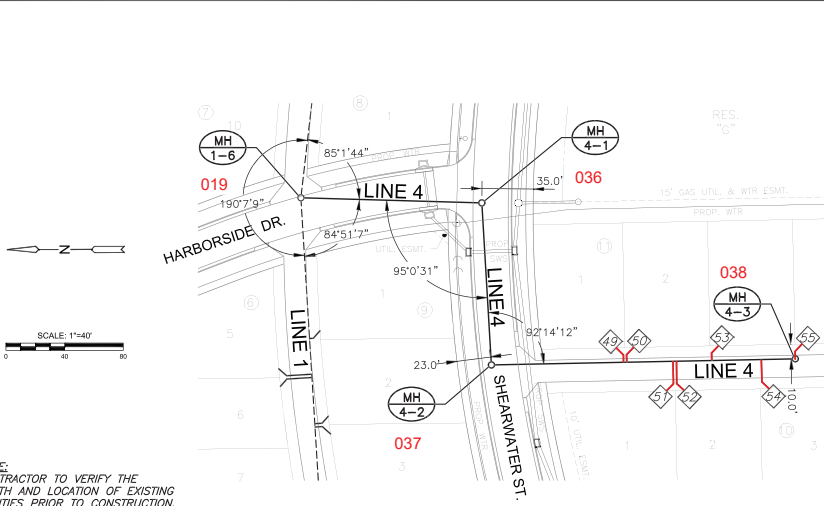
= SAND, FLUSH & VIBRATE



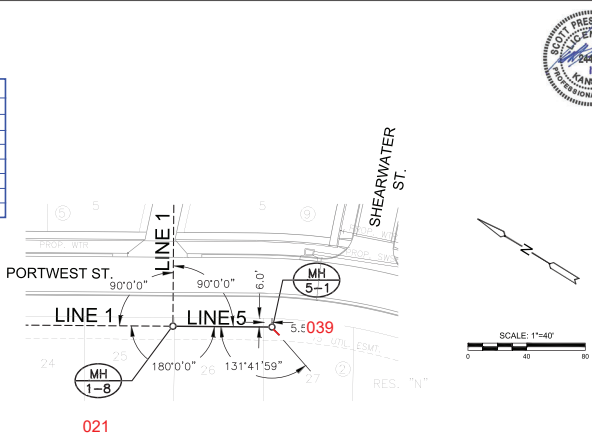
NOTE:
CONTRACTOR TO VERIFY THE DEPTH AND LOCATION OF EXISTING UTILITIES PRIOR TO CONSTRUCTION.

202202-024794-01 SAN LINE 3 SANITARY SEWER PLANS FOR COURTYARDS AT THE MOORINGS PHASE 1

PROJECT: 468-2022-024794 - SANITARY SEWER MAINS AT HARBOURSIDE DR. & SHEARWATER ST. & PORTWEST ST. & SHEARWATER ST. & SHEARWATER ST.

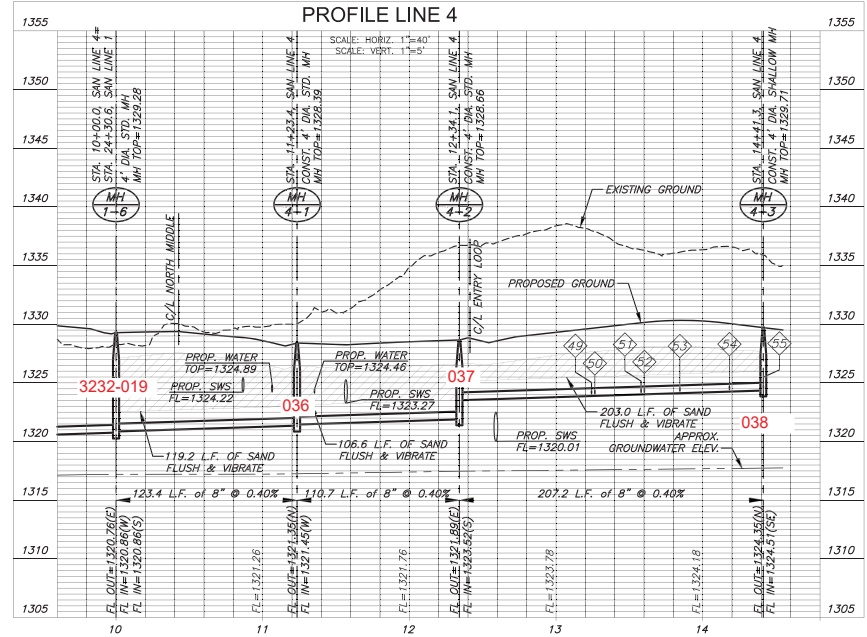


Riser Number	Distance from Main to Riser (L/R)	Distance from	
		Upstream MH	Downstream MH
49	12' Lt.	121'	80'
50	11' Lt.	104'	97'
51	22' Rt.	86'	115'
52	22' Rt.	70'	131'
53	11' Lt.	51'	150'
54	19' Rt.	11'	190'
55	12' Lt.	@ end of connection	6'

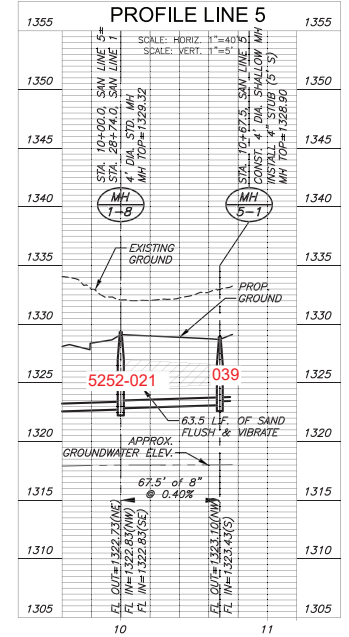


NOTE: CONTRACTOR TO VERIFY THE DEPTH AND LOCATION OF EXISTING UTILITIES PRIOR TO CONSTRUCTION.

PLAN LINE 4
PROFILE LINE 4



PLAN LINE 5
PROFILE LINE 5



SANITARY SEWER PLANS FOR
COURTYARDS AT THE MOORINGS
PHASE 1

©2023 MKEC Engineering
All Rights Reserved
These drawings and their contents, including but not limited to, all copyright, design, & other notices are the sole property of MKEC Engineering (MKEC), and may not be used or reproduced in any way without the express consent of MKEC.

SAN LINE 4 & LINE 5

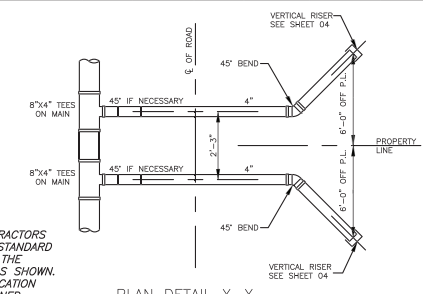
PROJECT NO.	468-2022-024794	
DATE	JAN 2023	
SCALE	1"=40'	
DESIGNED	DFL	
DRAWN	LM	
CHECKED	SPE	
REV.	REVISION	DATE
SHEET NO. 11 OF 23		

PROJECT: 468-2022-024794

DATE: JAN 2023



SEWER SERVICE RISER TABLE						FOR INFORMATION ONLY	
NO.	TYPE	LOCATION			APPROXIMATE LENGTH		
		LOT NO.	BLOCK NO.	LINE NO.	VERTICAL (FT)	HORIZONTAL (FT)	
1	4" TEE	6	7	1	22+15.94/RT	10.1'	23.2'
2	4" TEE	4	8	1	22+23.68/LT	10.1'	10.8'
3	4" TEE	3	8	1	22+25.92/LT	10.1'	10.8'
4	4" MH CONNECTION	7	7	1	22+65.05/RT	10.0'	20.6'
5	4" MH CONNECTION	8	7	1	22+65.05/RT	10.0'	20.6'
6	4" TEE	2	8	1	23+32.80/LT	9.7'	9.2'
7	4" TEE	1	8	1	23+35.05/LT	9.7'	9.2'
8	4" TEE	9	7	1	23+59.78/RT	9.4'	24.9'
9	4" TEE	10	7	1	23+62.04/RT	9.4'	24.9'
10	4" TEE	1	9	1	25+26.76/LT	8.2'	9.4'
11	4" TEE	5	6	1	25+51.14/RT	8.3'	24.3'
12	4" TEE	6	6	1	25+53.39/RT	8.3'	23.8'
13	4" TEE	2	9	1	25+84.95/LT	8.3'	11.3'
14	4" TEE	3	9	1	25+87.20/LT	8.3'	12.5'
15	4" TEE	7	6	1	26+47.66/RT	7.8'	17.5'
16	4" TEE	8	6	1	26+49.91/RT	7.8'	15.0'
17	4" TEE	4	9	1	27+01.88/LT	7.3'	25.8'
18	4" TEE	5	9	1	27+04.13/LT	7.3'	29.2'
19	4" MH CONNECTION	21	2	1	31+66.35/LT	5.0'	31.6'
20	4" MH CONNECTION	20	2	1	31+66.35/LT	5.0'	27.9'
21	4" TEE	17	2	1	34+52.49/LT	4.8'	25.7'
22	4" TEE	16	2	1	34+54.77/LT	4.8'	23.5'
23	4" TEE	10	1	2	10+76.31/RT	10.4'	27.3'
24	4" TEE	9	1	2	11+34.31/RT	10.5'	28.7'
25	4" TEE	8	1	2	11+36.56/RT	10.5'	28.7'
26	4" TEE	5	5	3	10+84.28/LT	7.3'	11.8'
27	4" TEE	4	5	3	11+42.31/LT	7.3'	15.2'
28	4" TEE	3	5	3	11+44.56/LT	7.3'	13.6'
29	4" TEE	2	5	3	12+25.96/LT	7.2'	12.0'
30	4" TEE	1	5	3	12+28.21/LT	7.2'	11.6'
31	4" TEE	4	4	3	13+67.50/LT	6.3'	22.0'
32	4" TEE	3	4	3	13+69.75/LT	6.3'	22.0'
33	4" TEE	1	6	3	13+71.40/RT	6.3'	12.0'
34	4" TEE	2	6	3	13+73.75/RT	6.3'	12.0'
35	4" TEE	2	4	3	14+63.50/LT	6.5'	22.0'
36	4" TEE	1	4	3	14+65.75/LT	6.5'	22.0'
37	4" TEE	3	6	3	14+67.40/RT	6.5'	12.0'
38	4" TEE	4	6	3	14+69.65/RT	6.5'	12.0'
39	4" TEE	5	3	3	16+36.90/LT	6.1'	22.0'
40	4" TEE	4	3	3	16+39.15/LT	6.1'	22.0'
41	4" TEE	1	7	3	16+57.47/RT	6.2'	12.0'
42	4" TEE	2	7	3	16+59.72/RT	6.2'	12.0'
43	4" TEE	3	3	3	17+42.90/LT	6.4'	22.0'
44	4" TEE	2	3	3	17+45.15/LT	6.4'	22.0'
45	4" TEE	3	7	3	17+63.47/RT	6.4'	12.0'
46	4" TEE	4	7	3	17+65.72/RT	6.4'	12.0'
47	4" TEE	1	3	3	17+93.15/LT	6.2'	22.0'
48	4" MH CONNECTION	5	7	3	18+17.60/RT	5.8'	12.0'
49	4" TEE	1	11	4	13+24.20/LT	5.3'	12.0'
50	4" TEE	2	11	4	13+26.46/LT	5.3'	12.0'
51	4" TEE	1	10	4	13+57.98/RT	5.6'	22.0'
52	4" TEE	2	10	4	13+60.23/RT	5.6'	22.0'
53	4" TEE	3	11	4	13+84.46/LT	5.7'	12.0'
54	4" TEE	3	10	4	14+18.23/RT	5.3'	22.0'
55	4" MH CONNECTION	4	11	4	14+41.33/LT	4.9'	12.0'



NOTE:
IT SHALL BE THE CONTRACTORS
OPTION TO PROVIDE A STANDARD
CITY RISER IN LIEU OF THE
ADDITIONAL 45° BEND AS SHOWN.
THE VERTICAL RISER LOCATION
MUST REMAIN AS DESIGNED.



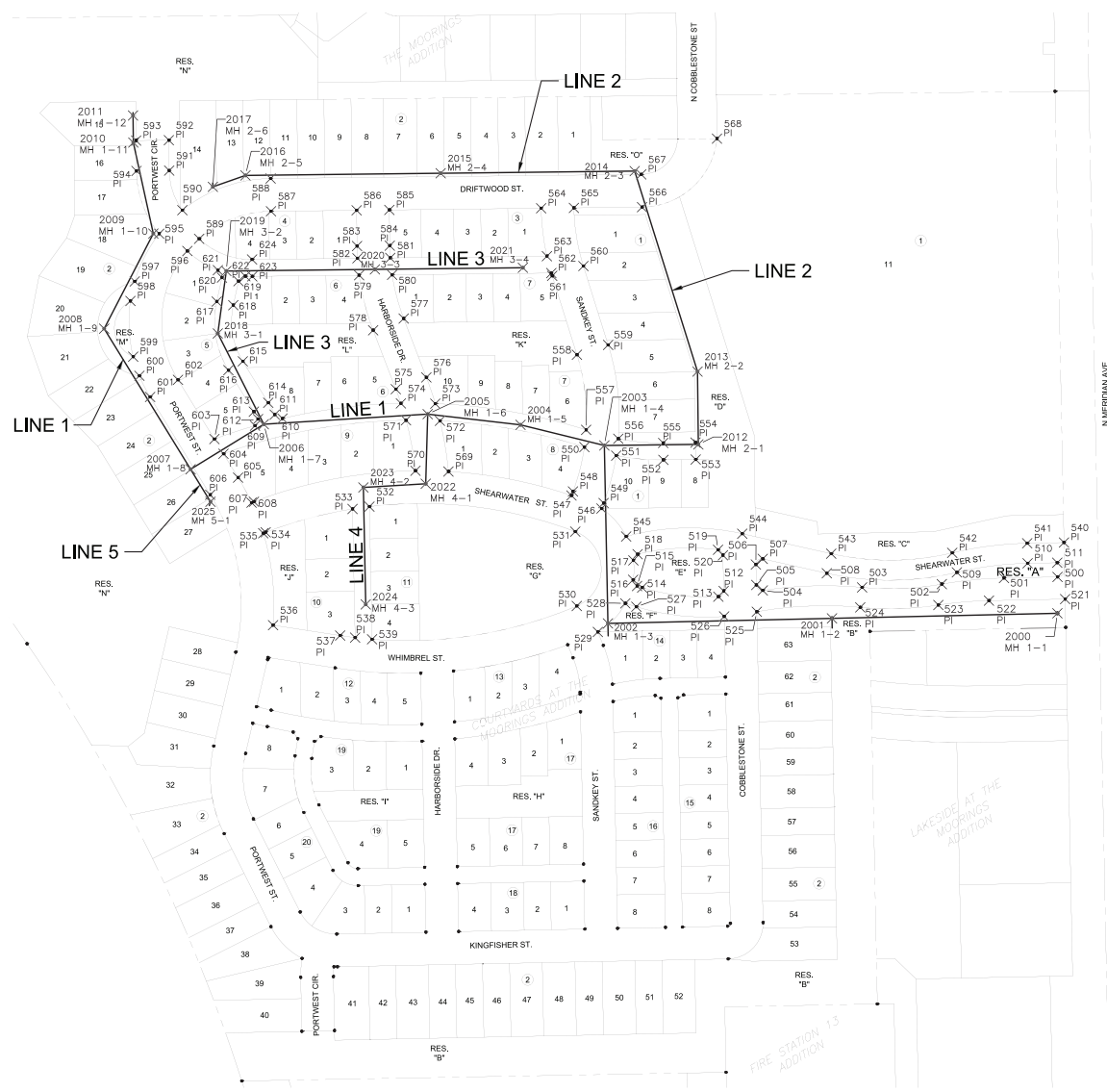
SANITARY SEWER PLANS FOR
COURTYARDS AT THE MOORINGS
PHASE 1

©2023
MKEC Engineering
All Rights Reserved
www.mkec.com

SERVICE LINES		
PROJECT NO.	468-2022-024794	
DATE	JAN 2023	
SCALE	1"=100'	
DESIGNED	DFL	
DRAWN	LM	
CHECKED	SPE	
NO.	REVISION	DATE
SHEET NO.		

PROJECT NO. 468-2022-024794

DATE: JAN 2023

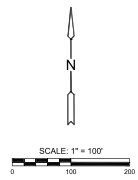


SANITARY SEWER PLANS FOR COURTYARDS AT THE MOORINGS PHASE 1

©2022
MKEC Engineering
All Rights Reserved
www.mkec.com
These drawings and their contents, including but not limited to, all copyright, design, & trade name are the exclusive property of MKEC Engineering (MKEC), and may not be used or reproduced in any way without the express consent of MKEC.

BUBBLE MAP

PROJECT NO.	468-2022-024794
DATE	JAN 2023
SCALE	1"=100'
DESIGNED	DFL
DRAWN	LM
CHECKED	SPE



NO.	REVISION	DATE

