

SANITARY SEWER AND WATERLINE IMPROVEMENTS

5551 A
5551 B
5651 C

BASIN: SS23-08

TO SERVE

NORTH JUNCTION UTILITY RELOCATION

Apex Excavating - Contractor
J. Terhune - City of Wichita, Field Project Engineer
M. Thom - City of Wichita, Inspector
As-built
Release Date: 4/3/2023
Completion Date:
: apr 11/15/2023

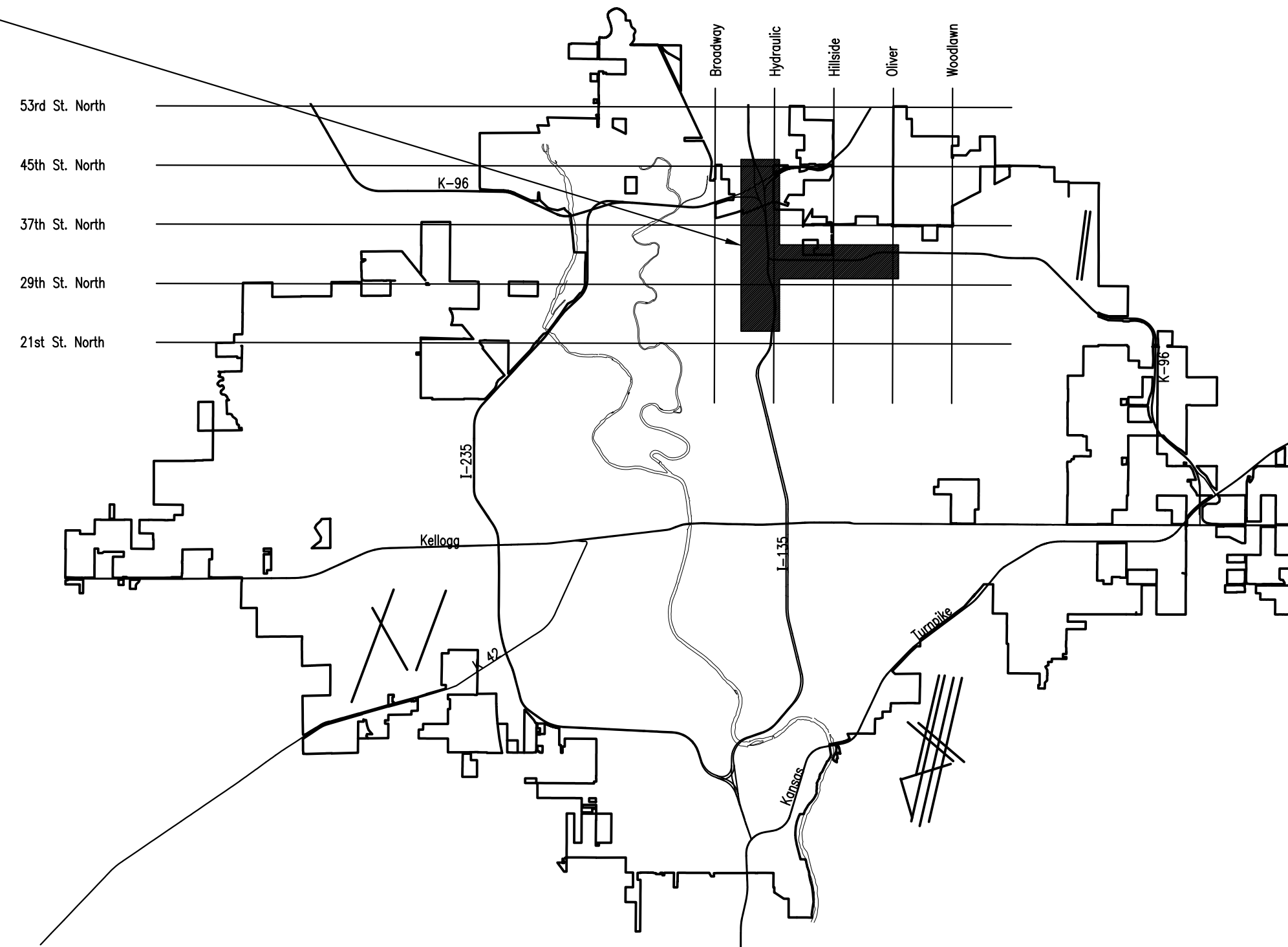
SANITARY SEWER: CITY OF WICHITA ENGINEERING PROJECT NO. 468-2021-002929
ORG CODE 53200020, MUNIS NO. S0029

WATERLINE: CITY OF WICHITA ENGINEERING PROJECT NO. 448-2021-034139
ORG CODE 54250320, MUNIS NO. W0030

CITY OF WICHITA, KANSAS

GARY JANZEN, P.E. - CITY ENGINEER

PROJECT SITE
NORTH JUNCTION



LOCATION MAP

INDEX OF SHEETS

SHEET NUMBER	SHEET TITLE
CU001	TITLE SHEET
CU002	GENERAL NOTES
CU003	OVERALL KEY MAP
CU100	SANITARY SEWER KEY MAP, CONTROL, & BUBBLE MAP
CU101	SANITARY SEWER ADJUSTMENT NO. 1
CU102	SANITARY SEWER ADJUSTMENT NO. 4
CU103	SANITARY SEWER LINE NO. 1
CU104	SANITARY SEWER SERVICE LINE NO. 1
CU200	PRECAST SANITARY SEWER MANHOLE
CU201	MANHOLE FRAME AND COVER DETAILS
CU202	VERTICAL RISER ASSEMBLY SEWER DETAIL
CU300	WATER LINE NO. 1 KEY MAP, CONTROL, & BUBBLE MAP
CU301	WATER LINE NO. 2 KEY MAP, CONTROL, & BUBBLE MAP
CU302	WATERLINE NO. 1
CU303	WATERLINE NO. 1 - VALVES
CU304 THRU CU306	WATERLINE NO. 2
CU400	STANDARD WATER ASSEMBLY DETAIL
CU401	MISCELLANEOUS WATER DETAILS
CU402	STANDARD WATER SERVICE DETAIL
CU500 THRU CU504	EROSION CONTROL DETAILS
CT101	37TH STREET TRAFFIC CONTROL PLAN
CT102 THRU CT105	HYDRAULIC AVE TRAFFIC CONTROL PLAN

SEPTEMBER 2022

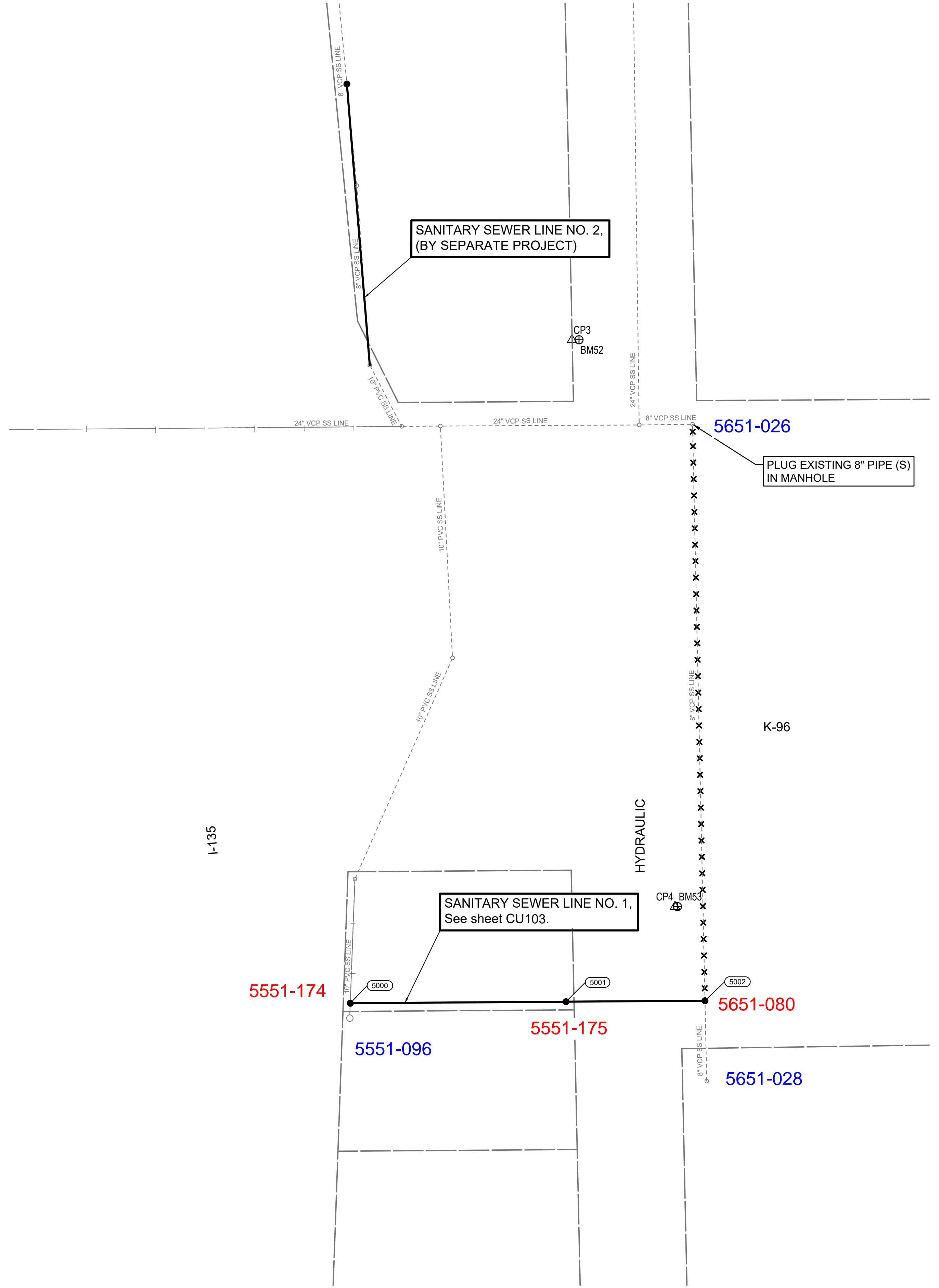


SANITARY SEWER AND WATERLINE IMPROVEMENTS
 TO SERVE
 NORTH JUNCTION UTILITY RELOCATION
 GARY JANZEN, P.E. - CITY ENGINEER
 SS: CITY OF WICHITA PROJ. NO. 468-2021-002929
 WL: CITY OF WICHITA PROJ. NO. 448-2021-034139

Issue:	
JOB NO.	35-210253-000-0042
DATE	01 JUNE 2021
PM	TBK
DESIGNED BY	TBK
DRAWN BY	KTD
CHECKED BY	RWG
TITLE SHEET	
CU001	

SAVED 9/13/2022 2:41:25 PM BY KURTIS DEKAT
 PLOTTED 9/13/2022 2:41:44 PM BY KURTIS DEKAT
 U:\WICHITA-CIVIL\2021\1210253\000\MIDDRAWINGS\210253-000-CU001.DWG

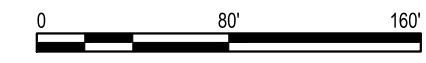
SAVED 9/12/2022 2:24:51 PM BY KURTIS DEKAT
 PLOTTED 9/13/2022 11:22:31 AM BY KURTIS DEKAT
 U:\WICHITA-CIVIL\2021\210253\000\MIDDRAWINGS\210253-000-CU100.DWG



LEGEND

- EXISTING SANITARY SEWER
- PROPOSED SANITARY SEWER
- EXISTING FORCE MAIN
- PROPOSED FORCE MAIN
- ABANDON EXISTING SANITARY SEWER

SCALE:



SANITARY SEWER LINE NO. 1				
COORDINATE LIST				
POINT	NORTHING	EASTING	STATION	DESCRIPTION
5000	1,706,551.1980	1,654,143.5728	10+00.00	PROP. SS MH-2
5001	1,706,553.0636	1,654,406.2960	12+63.34	PROP. SS MH-3
5002	1,706,554.2601	1,654,575.5019	14+32.80	PROP. SS MH-4

(5000) = COORDINATE POINT NO.

NOTE:
 SANITARY SEWER SERVICE LINE NO. 1 NOT SHOWN ON THIS SHEET.
 SEE SHEET NO. CU104 FOR
 SANITARY SEWER SERVICE LINE NO. 1 COORDINATES

HORIZONTAL DATUM/COORDINATE SYSTEM: ADJUSTED STATE PLANE
 COORDINATES NAD 83 KANSAS SOUTH ZONE
 PROJECT COORDINATE SYSTEM: (GRID) ON DESCRIBED COORDINATE SYSTEM
 VERTICAL DATUM: NAVD 88

BMK 52
 CHISELED SQUARE ON A RETAINING WALL, NORTH END OF SOUTH ENTRANCE TO FIRST WIRELESS
 EL= 1320.83 (NAVD88)

BMK 53
 CHISELED SQUARE ON THE WEST END OF NORTH RETAINING WALL AT EAST BOUND K-96 RAMP AT HYDRAULIC
 EL= 1319.55 (NAVD88)

BMK 54 (NOT SHOWN)
 CHISELED SQUARE ON THE CENTER OF THE NORTHEAST HEADWALL OF THE ABANDONED SCALE, DIRECTLY SOUTH OF POLE #W7F84558
 EL= 1325.61 (NAVD88)

- CP-3
 N: 1707358.366 E: 1654413.525
 MAG NAIL IN THE NORTH SIDE OF THE SOUTH ENTRANCE TO FIRST WIRELESS
- 15.0' S TO THE CENTERLINE OF THE ENTRANCE
 - 26.5' E TO THE W EDGE OF HYDRAULIC
 - 74.2' SSE TO THE TOP CENTER OF A FIRE HYDRANT
- CP-4
 N: 1706668.699 E: 1654538.965
 1/2" REBAR WITH PEC CONTROL POINT CAP, NORTH SIDE OF EAST BOUND K-96 RAMP AT HYDRAULIC
- 3.0' E TO A CHISELED SQUARE ON THE WEST END OF THE RETAINING WALL
 - 36.5' W TO THE EAST EDGE OF HYDRAULIC
 - 14.5' S TO THE NORTH EDGE OF K-96 ON-RAMP
- CP-5 (NOT SHOWN)
 N: 1707245.159 E: 1653219.950
 1/2" REBAR WITH PEC CONTROL POINT CAP
- 5.8' E TO A RAILROAD SPIKE IN THE WEST FACE OF A POWER POLE
 - 30.3' NORTH TO A KDOT RIGHT OF WAY FENCE (EAST/WEST)
 - 62.34' SSE TO A CHISELED SQUARE ON A RETAINING WALL (BM 54)
- CP-6 (NOT SHOWN)
 N: 1707290.5486 E: 1652531.478
 CHISELED CROSS ON THE SOUTHEAST CORNER OF A STORM DRAIN MANHOLE PAD
- 22.0' S TO THE CENTERLINE OF HAUL ROAD
 - 56.5' W TO THE CENTERLINE OF OHIO STREET
 - 64.9' WSW TO THE NORTHWEST CORNER OF CONCRETE FENCE COLUMN



SANITARY SEWER AND WATERLINE IMPROVEMENTS TO SERVE

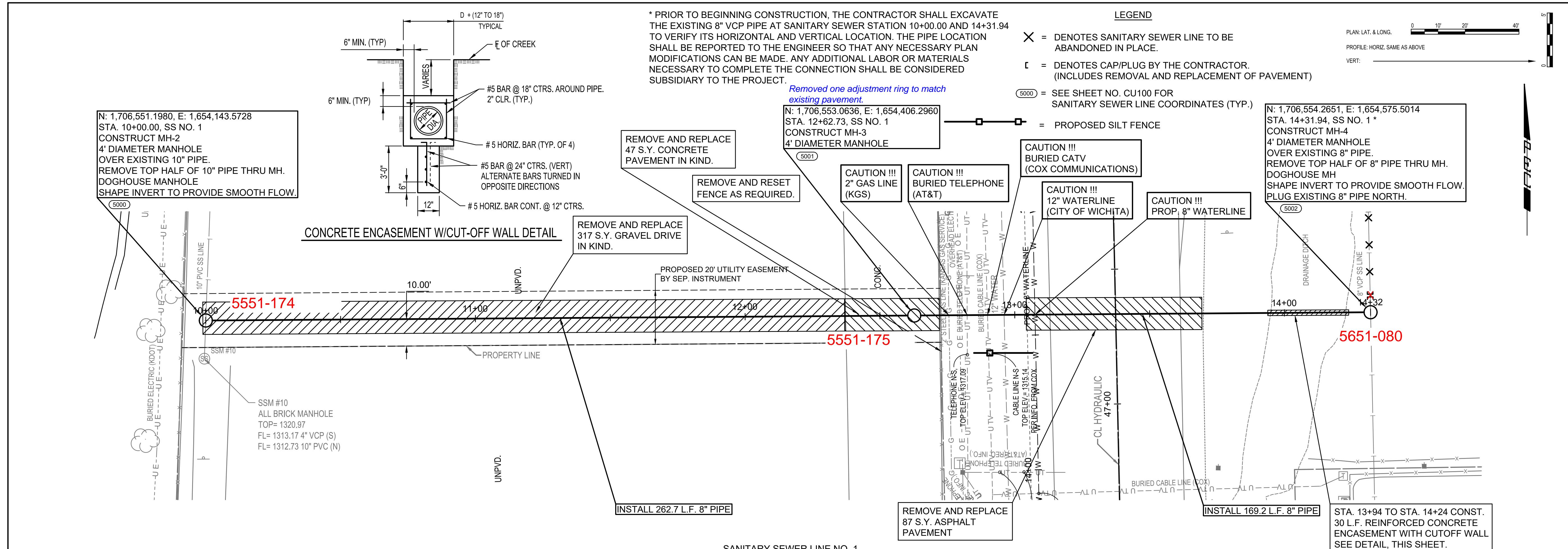
NORTH JUNCTION UTILITY RELOCATION

GARY JANZEN, P.E. - CITY ENGINEER
 SS: CITY OF WICHITA PROJ. NO. 468-2021-002929
 WL: CITY OF WICHITA PROJ. NO. 448-2021-034139

Issue:	
JOB NO.	35-210253-000-0042
DATE	01 JUNE 2021
PM	TBK
DESIGNED BY	TBK
DRAWN BY	KTD
CHECKED BY	RWG
SANITARY SEWER KEY MAP, CONTROL, & BUBBLE MAP	

CU100

SAVED 9/14/2022 9:44:59 AM BY KURTIS DEKAT
 PLOTTED 9/14/2022 9:51:44 AM BY KURTIS DEKAT
 U:\WICHITA-CIVIL\2021\210253\000\MIDRAWINGS\210253-000-CU103.DWG

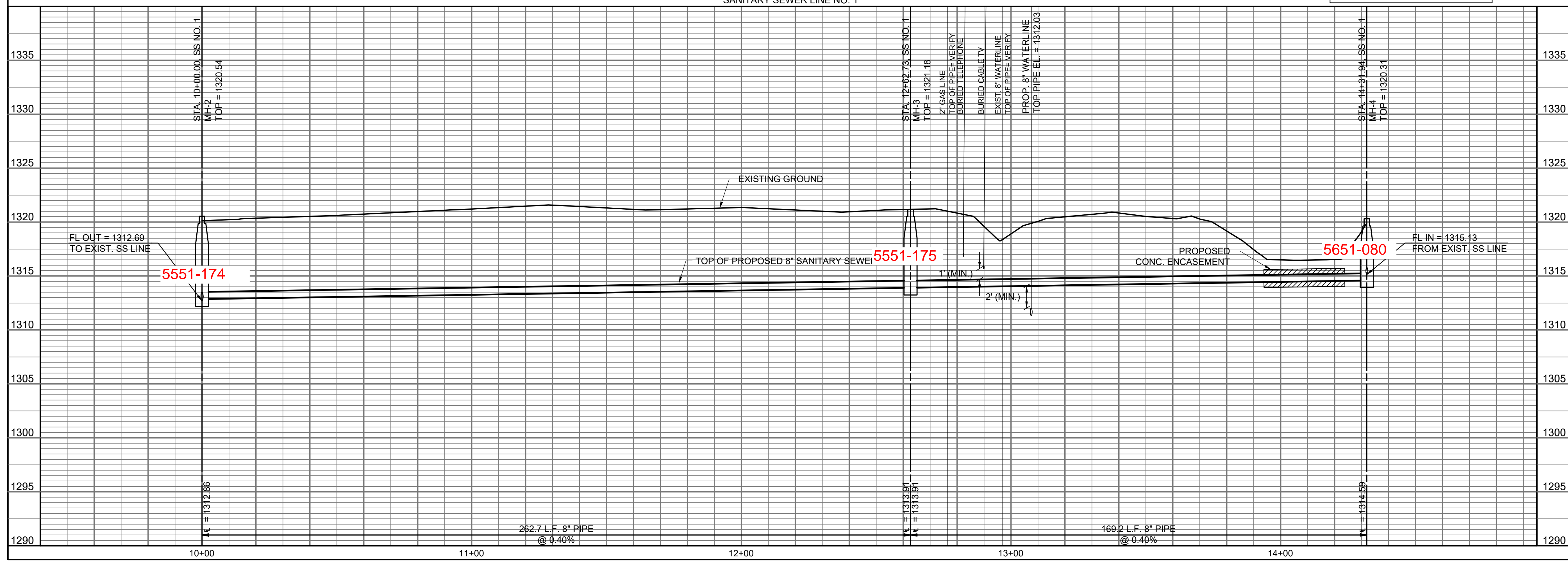


PEC
 PROFESSIONAL ENGINEERING CONSULTANTS
 303 SOUTH TOPEKA
 WICHITA, KS 67202
 316-262-2691 www.pec1.com

CITY OF WICHITA

TREVOR KAUFMAN
 LICENSED
 26008
 09/14/2022
 KANSAS
 PROFESSIONAL ENGINEER

SANITARY SEWER AND WATERLINE IMPROVEMENTS
 TO SERVE
NORTH JUNCTION UTILITY RELOCATION
 GARY JANZEN, P.E. - CITY ENGINEER
 SS: CITY OF WICHITA PROJ. NO. 468-2021-002929
 WL: CITY OF WICHITA PROJ. NO. 448-2021-034139



Issue:	
JOB NO.	35-210253-000-0042
DATE	01 JUNE 2021
PM	TBK
DESIGNED BY	TBK
DRAWN BY	KTD
CHECKED BY	RWG
SANITARY SEWER LINE NO. 1	
CU103	

