

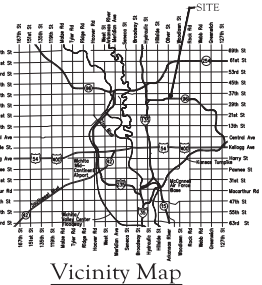
GENERAL NOTES:

- The Contractor shall comply with all applicable safety regulations. All construction shall be completed following current City Standard Specifications and Special Provisions, unless otherwise noted.
- Contractor will be required to provide notice to utility companies a minimum of seventy-two (72) hours prior to any excavation, as follows:
Kansas One-Call 687-2470
The Contractor must notify the following in case of an emergency:
AT&T 1-800-246-8464
Black Hills Energy 1-800-594-9889
City of Wichita Water & Sewer 1-316-219-8521
City of Wichita Stormwater 1-316-268-4000
City of Wichita Traffic 1-316-268-4254
City of Wichita Police 1-888-540-3550
Kansas Gas Service 1-888-482-4857
Energy 1-800-544-4857
- Utility service lines, poles, etc. are to be adjusted as necessary by others prior to construction unless the plans specifically call for their adjustment by the Contractor or unless the plans specifically identify a utility to be adjusted by its owner during construction. Existing utilities and their locations, as shown on the plans, represent the best information obtainable for design. The Contractor will be required to work around existing utilities within the right-of-way which do not conflict with proposed construction.
- Rubble from the removal of miscellaneous structures and excess excavation which is to be wasted shall be disposed of on sites to be provided by the Contractor. These sites shall be approved by the Engineer, as to suitability, appearance and site location. Locations, in the opinion of the Engineer, that will leave an unsightly appearance will not be approved. All fill materials must be approved by the Kansas Department of Health and Environment. Material other than that specified in a flood plain will require a Kansas State Board of Agriculture permit. Any material dumped in wetlands of the United States or wetlands is subject to U.S. Corps of Engineers permitting regulations. Any material buried or stockpiled beyond approved construction limits will require additional archeological investigations unless buried in a previously approved borrow location.
- Trees and shrubs in public right-of-way which are in direct conflict with proposed new construction shall be removed by the Contractor with the City Engineer's approval. Trees and shrubs which are not in direct conflict with proposed new construction shall be saved and protected from damage.
- The Contractor shall give all property owners and/or tenants of developed property adjoining the construction of this project a minimum of ten (10) days notice prior to start of construction.
- The Contractor shall be responsible for preserving property lines. The Contractor will be required to re-establish any property lines which are damaged or destroyed by his construction operations. Such lines shall be re-established by a licensed land surveyor in accordance with state laws.
- The Engineering Division shall field locate water valve one time during construction when requested by the Contractor. It shall be the Contractor's responsibility to preserve such field locations during the construction process. Water valves, valve boxes or fire hydrants damaged during construction shall be repaired by Contractor at his own expense. Valve boxes and water meters within the project limits shall be adjusted to match field grades by the contractor.
- The Contractor shall notify the consultant engineer and District Engineer at 316-650-2740 with the City of Wichita with the anticipated construction start date and notify them of project completion. Staking and inspection for this project will be the responsibility of the Contractor.
- If traffic will be impacted by construction, a traffic control plan must be submitted and approved by the City Traffic Engineer at traffic@cityofwichita.gov before construction can begin. The Contractor shall be responsible for all traffic control measures to facilitate construction. All construction site markings and signage shall conform to the latest version of Manual on Uniform Traffic Control Devices (MUTCD) as published by the US Dept. of Transportation, Federal Highway Administration. All costs associated with construction markings and signage shall be the Contractor's responsibility.
- All elevations shown are NAVD88.
- All areas disturbed during construction that will not be under proposed pavement shall be restored to match existing conditions per City specifications.

AS-BUILT PLANS

SANITARY SEWER IMPROVEMENTS
to serve
SCOOTER'S COFFEE
GREAT PLAINS BUSINESS
PARK 2ND ADD.

4858 E. 35TH ST. N.
CITY OF WICHITA, KANSAS
Paul Gunzelman, P.E. Interim City Engineer
2023-020978PPS
(53030982)



Benchmarks

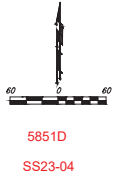
BM #1: "1" chiseled on top of curb, approx 2.1' north & 9.2' east of the northwest property corner, Lot 3, Block 1, Great Plains Business Park 2nd Addition, Wichita, Sedgewick County, Kansas.
Elevation = 1367.88 (NAVD 88)

BM #2: Cross cut in the side of sanitary sewer manhole, approx 14.3' south & 0.2' east of the southeast property corner, Lot 3, Block 1, Great Plains Business Park 2nd Addition, Wichita, Sedgewick County, Kansas.
Elevation = 1367.88 (NAVD 88)

BM#1 CROSS CUT IN THE SIDE OF THE SANITARY MANHOLE APPROXIMATELY 2.1' NORTH AND 9.2' EAST OF THE NORTH EAST PROPERTY LINE. ELEV. 1368.99

UTILITY CONTRACTOR = MCCULLOUGH EXCAVATION. SUPERINTENDENT = ROB GRAY CONSTRUCTION STAKING = BAUGHMAN CO. INSPECTION: BAUGHMAN COMPANY, P.A. INSPECTOR: BEAU GIBLER AS-BUILTS BY: B. GIBLER & L. POWELL 11-15-2023

FIELD WORK BEGAN: 9-19-2023 ENDED: 11-09-2023



STRUCTURE = WICHITA CONCRETE PIPE 8" SS PVC = SANDERSON PIPE

Sheet Index

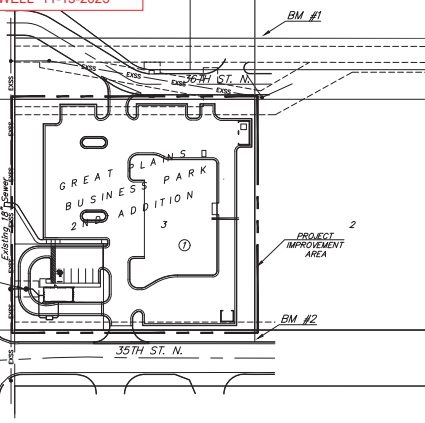
Title Sheet	1
Line 1	2
Erosion Control/Grading Plan	3
Precast SS Manhole Detail	4
Manhole Frame & Cover Detail	5
Erosion Control BMP Details	6-10
Copy of Plot	11

APPROVED AS NOTED BY WICHITA PUBLIC WORKS ENGINEERING DIVISION
Engineering approved by *Shawn Mellich* on 08.23.23

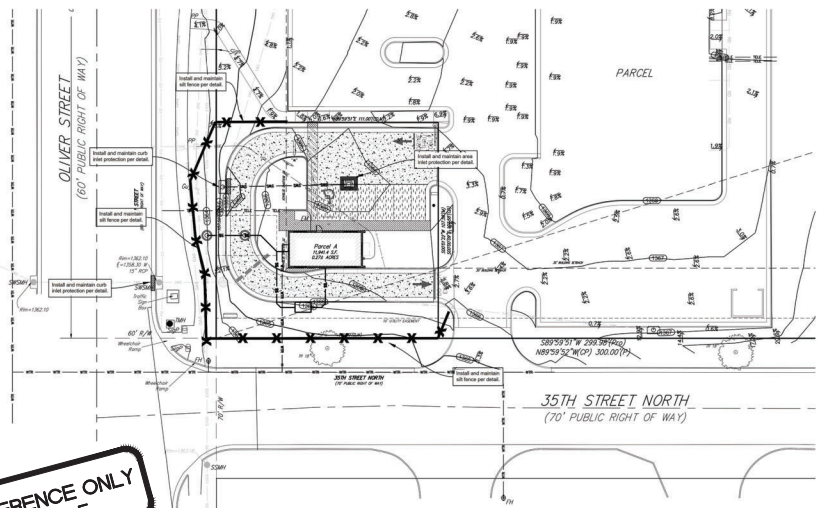
Utilities approved by *Debra Ary* on 08.23.23

NOTE TO CONTRACTORS
Inspection and testing for this project is to be provided by a Licensed Consulting Engineering Firm under contract with the Owner/Developer. Said inspection to be in accordance with the City of Wichita standard construction engineering practices and certified by a Licensed Professional Engineer in the state of Kansas. No work shall be performed by the Contractor without such inspection nor shall any work be commenced without written authorization by City Engineering. All Construction and Materials shall comply with the current City of Wichita Specifications and Standards and Special Provisions (on file and available at Wichita.gov).
An approved copy of these plans signed by City staff are required on-site.

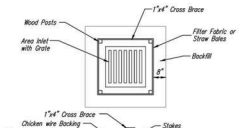
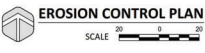
BAUGHMAN JOB # 23-09-E587



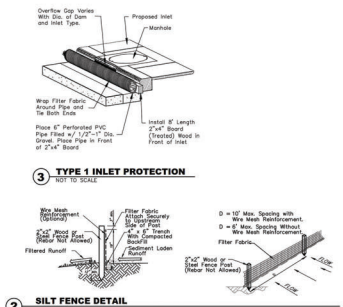
August 24, 2023
BAUGHMAN COMPANY
315 Ellis St. Wichita, KS 67211 316-262-7271
BaughmanCo.com



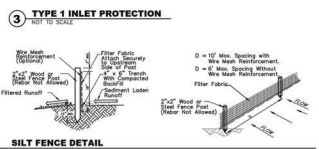
**FOR REFERENCE ONLY
NOT TO SCALE**



1 INLET PROTECTION FOR AREA INLETS
(INLET PROTECTION: SILT FENCE OR STRAW BALS)

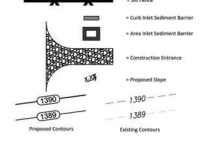


2 SILT FENCE DETAIL
48\"/>



3 TYPE 1 INLET PROTECTION
48\"/>

EROSION CONTROL LEGEND



LEGAL DESCRIPTION

The west 137 feet of the south 137.58 feet (Parcel A) of Lot 3, Block 1, Great Plains Business Park 2nd Addition, Wichita, Sedgewick County, Kansas

SITE INFORMATION

Total Area: 111,941.4 sq. ft. (0.27 acres)
 Disturbed Area: 111,941.4 sq. ft. (0.27 acres)
 Impervious Area, pre-const: 0 sq. ft. (0.00 acres)
 Impervious Area, post-const: 17,386.5 sq. ft. (0.37 acres)

BENCHMARKS

Site Benchmark - 1
 * Observed on top of curb, approx 2.1' north & 8.2' east of the northeast property corner, Lot 3, Block 1, Great Plains Business Park 2nd Addition, Wichita, Sedgewick County, Kansas
 Elevation = 1387.88 (NAVD 88)

Site Benchmark - 2
 Cross Cut in the side of sanitary sewer manhole, approx 14.3' south & 0.2' east of the southwest property corner, Lot 3, Block 1, Great Plains Business Park 2nd Addition, Wichita, Sedgewick County, Kansas
 Elevation = 1387.88 (NAVD 88)

KANSAS ONE CALL

Contractor shall be required to provide notice to Kansas One Call at 387-2479 a minimum of three (3) working days prior to any excavation or work adjacent to utilities.
 Kansas One Call 1-800-DIG-SAFE

UTILITY CONTACTS

The Contractor must notify the following in case of an emergency:

Kansas Gas Service (Gas)	1-888-882-4950
Black Hills Energy (Gas)	1-800-303-6337
Energy (Electricity)	388-8650
Com Communications (Telecommunication)	382-4279
AT&T (Telecommunication)	388-2750
City of Wichita Water Dept. (Water)	388-4548
	or 388-8000
City of Wichita Sewer Maint. (San. Sewer)	or 388-4024
	or 388-4000
City of Wichita Storm Sewer Maint. (Storm Sewer)	388-4000
City of Wichita Traffic Maint. (Trat. Control)	388-4034
	or 388-4330
Comcast Pipeline Co. (Petroleum)	1-800-235-2555
Williams Pipeline Co. (Petroleum)	328-6600
	or 1-800-324-9006
Phillips Pipeline Co. (Petroleum)	1-800-766-8230

EROSION CONTROL NOTES

- No land clearing or grading shall begin until all applicable erosion control measures have been installed. This project is subject to the 2009 Plan, if applicable. The Contractor shall comply with any additional requirements as necessary for this site to be in compliance during construction, per this plan and per City and State specifications (See #11).
- All exposed areas that are needed or specified within 14 days of final grading. Seed is to include straw mulch, compact in place per industry standards.
- Should construction stop for longer than 14 days, the site shall be seeded as specified.
- Maintain erosion control measures after each rain and at least once a week.
- This plan shall not be considered all inclusive as the contractor shall take all necessary precautions to prevent soil erosion from leaving the site.
- Contractor shall comply with all state and local ordinances that apply.
- Additional erosion and sediment control measures will be installed if deemed necessary by on site inspection.
- Land disturbing activities shall not commence until approval to do so has been received by governing authorities.
- If installation of storm drainage system should be interrupted by weather or nighttime, the pipe ends shall be covered with filter fabric.
- See Landscape Plan for ground treatments in all disturbed areas beyond Impervious surfaces.
- This Erosion Control Plan should be in job trailer and/or on site at all times. The Contractor is responsible for any needed changes, updates or maintenance to BMP's on site. This plan may change and updates need to be recorded and documented on the plan. This plan is flexible plan due to changing site conditions and weather. Please inform Landscape Architect and/or Engineer of changes to plan.
- ANY substitutions for the sediment control devices shown, must be approved by the Landscape Architect and/or Engineer prior to any use on site.
- If site disturbance is over 1 acre, an NPDES Permit Application has been submitted for the property and a copy of this application must be kept at the job site for the duration of the construction process.

BAUGHMAN COMPANY
 315 E. 8th St.
 Wichita, KS 67211
 316-262-7271
 BaughmanCo.com

**DISTRICT 96 - SCOOTER'S COFFEE
 BREW CREW, LLC**
 E. 26th ST N.
 WICHITA, KS



BAUGHMAN COMPANY
 315 E. 8th St.
 Wichita, KS 67211
 316-262-7271
 BaughmanCo.com

**SCOOTER'S COFFEE
 BREW CREW, LLC**

EROSION CONTROL PLAN

SANITARY SEWER IMPROVEMENTS
 PROJECT NUMBER: 23-05-499
 DESIGN: TSW (tdw/ks/ksj)
 DATE: 07/12/23

EROSION CONTROL PLAN

C3.0

DESIGN: CRWAN
 DATE: August 24, 2023
 SHEET OF 11

