

GENERAL NOTES

1. THE CONTRACTOR SHALL COMPLY WITH ALL APPLICABLE SAFETY REGULATIONS. ALL CONSTRUCTION MUST HAVE A PERMIT TO EXCAVATE OBTAINED FROM THE CITY OF WICHITA. SPECIAL PROVISIONS:
2. CONTRACTOR WILL BE REQUIRED TO PROVIDE NOTICE TO UTILITY LOCATIONS AT LEAST 72 HOURS PRIOR TO ANY EXCAVATION, AS FOLLOWS:
KANSAS ONE-CALL 687-2470

THE CONTRACTOR MUST NOTIFY THE FOLLOWING IN CASE OF AN EMERGENCY:

- TERPSON, AMSTON
EAST CAMPUS EMERGENCY
1-316-515-6911
1-316-515-6300
1-800-249-8494
1-800-684-8889
1-316-268-4034
1-316-268-4034
1-888-462-4950
1-888-544-4857

3. UTILITY SERVICE LINES, POLES, ETC. ARE TO BE ADJUSTED AS NECESSARY TO ACCOMMODATE THE PROPOSED CONSTRUCTION. THE CONTRACTOR OR UNLESS THE PLANS SPECIFICALLY IDENTIFY A LOCATION, THE CONTRACTOR SHALL VERIFY THE LOCATION OF ALL EXISTING UTILITIES AND THEIR LOCATION, AS SHOWN ON THE PLANS, REPRESENT THE BEST INFORMATION OBTAINABLE FOR THE PROJECT. THE CONTRACTOR SHALL BE RESPONSIBLE FOR VERIFYING THE LOCATION OF ALL EXISTING UTILITIES WITHIN THE RIGHT-OF-WAY WHICH DO NOT CONFLICT WITH PROPOSED CONSTRUCTION.

4. RUBBLE FROM THE REMOVAL OF MISCELLANEOUS STRUCTURES AND EXCESS EXCAVATION WHICH IS TO BE WASTED SHALL BE PLACED IN A DESIGNATED AREA. THESE SITES SHALL BE APPROVED BY THE ENGINEER AS TO THE LOCATION OF THE EXCESS EXCAVATION. IN THE EVENT OF ANY EXCESS EXCAVATION, THE CONTRACTOR SHALL BE RESPONSIBLE FOR THE PROTECTION OF THE EXCAVATION. UNDESIRABLE APPEARANCE WILL NOT BE TOLERATED. ALL DISPOSAL OF EXCESS EXCAVATION SHALL BE IN ACCORDANCE WITH THE U.S. DEPARTMENT OF THE INTERIOR, BUREAU OF LAND MANAGEMENT, U.S. CORP. OF ENGINEERS PERMITTING REGULATIONS. ANY EXCESS EXCAVATION SHALL BE REMOVED AND RELOCATED TO A DESIGNATED AREA. ARCHAEOLOGICAL INVESTIGATIONS UNLESS BURIED IN A DESIGNATED AREA.

5. ALL EXISTING UTILITIES SHALL BE PROTECTED AND MAINTAINED THROUGHOUT CONSTRUCTION. THE CONTRACTOR SHALL BE RESPONSIBLE FOR THE PROTECTION OF ALL EXISTING UTILITIES. THE CONTRACTOR SHALL BE RESPONSIBLE FOR THE PROTECTION OF ALL EXISTING UTILITIES. THE CONTRACTOR SHALL BE RESPONSIBLE FOR THE PROTECTION OF ALL EXISTING UTILITIES.

6. TENANTS OF DEVELOPED PROPERTY ADJACENT TO THE CONSTRUCTION OF THIS PROJECT A MINIMUM OF TEN (10) DAYS NOTICE PRIOR TO START OF CONSTRUCTION.
7. CONTRACTOR SHALL BE RESPONSIBLE FOR THE PROTECTION OF ALL EXISTING UTILITIES. THE CONTRACTOR SHALL BE RESPONSIBLE FOR THE PROTECTION OF ALL EXISTING UTILITIES. THE CONTRACTOR SHALL BE RESPONSIBLE FOR THE PROTECTION OF ALL EXISTING UTILITIES.

8. THE ENGINEERING DIVISION SHALL FIELD LOCATE WATER VALVES AND FIRE HYDRANTS. THE CONTRACTOR SHALL BE RESPONSIBLE FOR THE PROTECTION OF ALL EXISTING UTILITIES. THE CONTRACTOR SHALL BE RESPONSIBLE FOR THE PROTECTION OF ALL EXISTING UTILITIES. THE CONTRACTOR SHALL BE RESPONSIBLE FOR THE PROTECTION OF ALL EXISTING UTILITIES.

9. DURING CONSTRUCTION AT 1:00 PM-5:00 PM, THE CONTRACTOR SHALL BE RESPONSIBLE FOR THE PROTECTION OF ALL EXISTING UTILITIES. THE CONTRACTOR SHALL BE RESPONSIBLE FOR THE PROTECTION OF ALL EXISTING UTILITIES. THE CONTRACTOR SHALL BE RESPONSIBLE FOR THE PROTECTION OF ALL EXISTING UTILITIES.

10. IF TRAFFIC WILL BE IMPACTED BY CONSTRUCTION, A TRAFFIC CONTROL PLAN MUST BE SUBMITTED AND APPROVED BY THE CITY OF WICHITA BEFORE CONSTRUCTION CAN BEGIN. THE CONTRACTOR SHALL BE RESPONSIBLE FOR ALL TRAFFIC CONTROL MEASURES TO BE TAKEN DURING CONSTRUCTION. THE CONTRACTOR SHALL BE RESPONSIBLE FOR THE PROTECTION OF ALL EXISTING UTILITIES. THE CONTRACTOR SHALL BE RESPONSIBLE FOR THE PROTECTION OF ALL EXISTING UTILITIES.

11. ALL AREAS DISTURBED DURING CONSTRUCTION THAT WILL NOT BE RESTORED TO ORIGINAL CONDITION SHALL BE RESTORED TO ORIGINAL CONDITION.

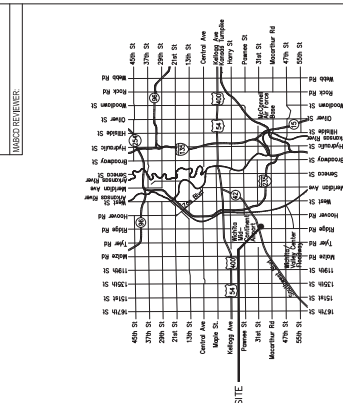
SANITARY SEWER to serve TEXTRON AVIATION WEST CAMPUS P43 EXPANSION CITY OF WICHITA, KANSAS

Gary Janzen, P.E. City Engineer
Project Number
2022-034865 PPS (53030982)

5043D
SWI- 6

SHEET INDEX

TITLE SHEET
SHEET NO. CU300
SHEET NO. CU301
SHEET NO. CU302
SHEET NO. CU303
SHEET NO. CU304
SHEET NO. CU305
SHEET NO. CU306
SHEET NO. CU307
SHEET NO. CU308
SHEET NO. CU309
SHEET NO. CU310
SHEET NO. CU311
SHEET NO. CU312
SHEET NO. CU313
SHEET NO. CU314
SHEET NO. CU315
SHEET NO. CU316
SHEET NO. CU317
SHEET NO. CU318
SHEET NO. CU319
SHEET NO. CU320
SHEET NO. CU321
SHEET NO. CU322
SHEET NO. CU323
SHEET NO. CU324
SHEET NO. CU325
SHEET NO. CU326
SHEET NO. CU327
SHEET NO. CU328
SHEET NO. CU329
SHEET NO. CU330
SHEET NO. CU331
SHEET NO. CU332
SHEET NO. CU333
SHEET NO. CU334
SHEET NO. CU335
SHEET NO. CU336
SHEET NO. CU337
SHEET NO. CU338
SHEET NO. CU339
SHEET NO. CU340
SHEET NO. CU341
SHEET NO. CU342
SHEET NO. CU343
SHEET NO. CU344
SHEET NO. CU345
SHEET NO. CU346
SHEET NO. CU347
SHEET NO. CU348
SHEET NO. CU349
SHEET NO. CU350
SHEET NO. CU351
SHEET NO. CU352
SHEET NO. CU353
SHEET NO. CU354
SHEET NO. CU355
SHEET NO. CU356
SHEET NO. CU357
SHEET NO. CU358
SHEET NO. CU359
SHEET NO. CU360
SHEET NO. CU361
SHEET NO. CU362
SHEET NO. CU363
SHEET NO. CU364
SHEET NO. CU365
SHEET NO. CU366
SHEET NO. CU367
SHEET NO. CU368
SHEET NO. CU369
SHEET NO. CU370
SHEET NO. CU371
SHEET NO. CU372
SHEET NO. CU373
SHEET NO. CU374
SHEET NO. CU375
SHEET NO. CU376
SHEET NO. CU377
SHEET NO. CU378
SHEET NO. CU379
SHEET NO. CU380
SHEET NO. CU381
SHEET NO. CU382
SHEET NO. CU383
SHEET NO. CU384
SHEET NO. CU385
SHEET NO. CU386
SHEET NO. CU387
SHEET NO. CU388
SHEET NO. CU389
SHEET NO. CU390
SHEET NO. CU391
SHEET NO. CU392
SHEET NO. CU393
SHEET NO. CU394
SHEET NO. CU395
SHEET NO. CU396
SHEET NO. CU397
SHEET NO. CU398
SHEET NO. CU399
SHEET NO. CU400
SHEET NO. CU401
SHEET NO. CU402
SHEET NO. CU403
SHEET NO. CU404
SHEET NO. CU405
SHEET NO. CU406
SHEET NO. CU407
SHEET NO. CU408
SHEET NO. CU409
SHEET NO. CU410
SHEET NO. CU411
SHEET NO. CU412
SHEET NO. CU413
SHEET NO. CU414
SHEET NO. CU415
SHEET NO. CU416
SHEET NO. CU417
SHEET NO. CU418
SHEET NO. CU419
SHEET NO. CU420
SHEET NO. CU421
SHEET NO. CU422
SHEET NO. CU423
SHEET NO. CU424
SHEET NO. CU425
SHEET NO. CU426
SHEET NO. CU427
SHEET NO. CU428
SHEET NO. CU429
SHEET NO. CU430
SHEET NO. CU431
SHEET NO. CU432
SHEET NO. CU433
SHEET NO. CU434
SHEET NO. CU435
SHEET NO. CU436
SHEET NO. CU437
SHEET NO. CU438
SHEET NO. CU439
SHEET NO. CU440
SHEET NO. CU441
SHEET NO. CU442
SHEET NO. CU443
SHEET NO. CU444
SHEET NO. CU445
SHEET NO. CU446
SHEET NO. CU447
SHEET NO. CU448
SHEET NO. CU449
SHEET NO. CU450
SHEET NO. CU451
SHEET NO. CU452
SHEET NO. CU453
SHEET NO. CU454
SHEET NO. CU455
SHEET NO. CU456
SHEET NO. CU457
SHEET NO. CU458
SHEET NO. CU459
SHEET NO. CU460
SHEET NO. CU461
SHEET NO. CU462
SHEET NO. CU463
SHEET NO. CU464
SHEET NO. CU465
SHEET NO. CU466
SHEET NO. CU467
SHEET NO. CU468
SHEET NO. CU469
SHEET NO. CU470
SHEET NO. CU471
SHEET NO. CU472
SHEET NO. CU473
SHEET NO. CU474
SHEET NO. CU475
SHEET NO. CU476
SHEET NO. CU477
SHEET NO. CU478
SHEET NO. CU479
SHEET NO. CU480
SHEET NO. CU481
SHEET NO. CU482
SHEET NO. CU483
SHEET NO. CU484
SHEET NO. CU485
SHEET NO. CU486
SHEET NO. CU487
SHEET NO. CU488
SHEET NO. CU489
SHEET NO. CU490
SHEET NO. CU491
SHEET NO. CU492
SHEET NO. CU493
SHEET NO. CU494
SHEET NO. CU495
SHEET NO. CU496
SHEET NO. CU497
SHEET NO. CU498
SHEET NO. CU499
SHEET NO. CU500



Vicinity Map

APPROVED AS NOTED
BY WICHITA PUBLIC WORKS
ENGINEERING DIVISION
SHAWN MELLIS - DECEMBER 6, 2022
DEB ART - DECEMBER 6, 2022
NOTE TO CONTRACTORS
Inspection and testing for this project is to be provided by a
City of Wichita Professional Engineer in accordance with the
City of Wichita standard construction engineering practices and
certified by a Licensed Professional Engineer in the state of Kansas.
The Contractor shall be responsible for providing all necessary
information and data to the City of Wichita Professional Engineer
noted above. All construction and materials shall comply with the
current City of Wichita Specifications and Standards and Special
Provisions. (see file and details at www.wichita.gov)
An approved copy of these plans signed by City staff are
required on-site.

NOVEMBER 2022

AS BUILTS

Project Inspector:
Eric Miner
KE MILLER ENGINEERING PA
177 E. Lewis, Wichita, KS 67202 (316)564-0242

Contractor:
McCullough
Excavation
1 June 23



PROFESSIONAL ENGINEERING CONSULTANTS, P.A.
303 SOUTH TOPEKA, WICHITA, KS 67202
316-268-0991 | www.pfc.com



DATE	REVISION
01/06/2022	REVISION 1

WEST CAMPUS - P43 - EXPANSION
7121 W. SOUTHWEST BLVD.,
WICHITA, KS

JOB NUMBER	20003402
DATE	01/06/2022
DRAWN	SMW
CHECKED	JAS

CONSTRUCTION DOCUMENTS

PRG COVER SHEET

CU300
WEST CAMPUS - P43



NO.	DATE	REVISION
1	01/05/2023	ISSUED

WEST CAMPUS - P43 - EXPANSION
 7121 W. SOUTHWEST BLVD,
 WICHITA, KS

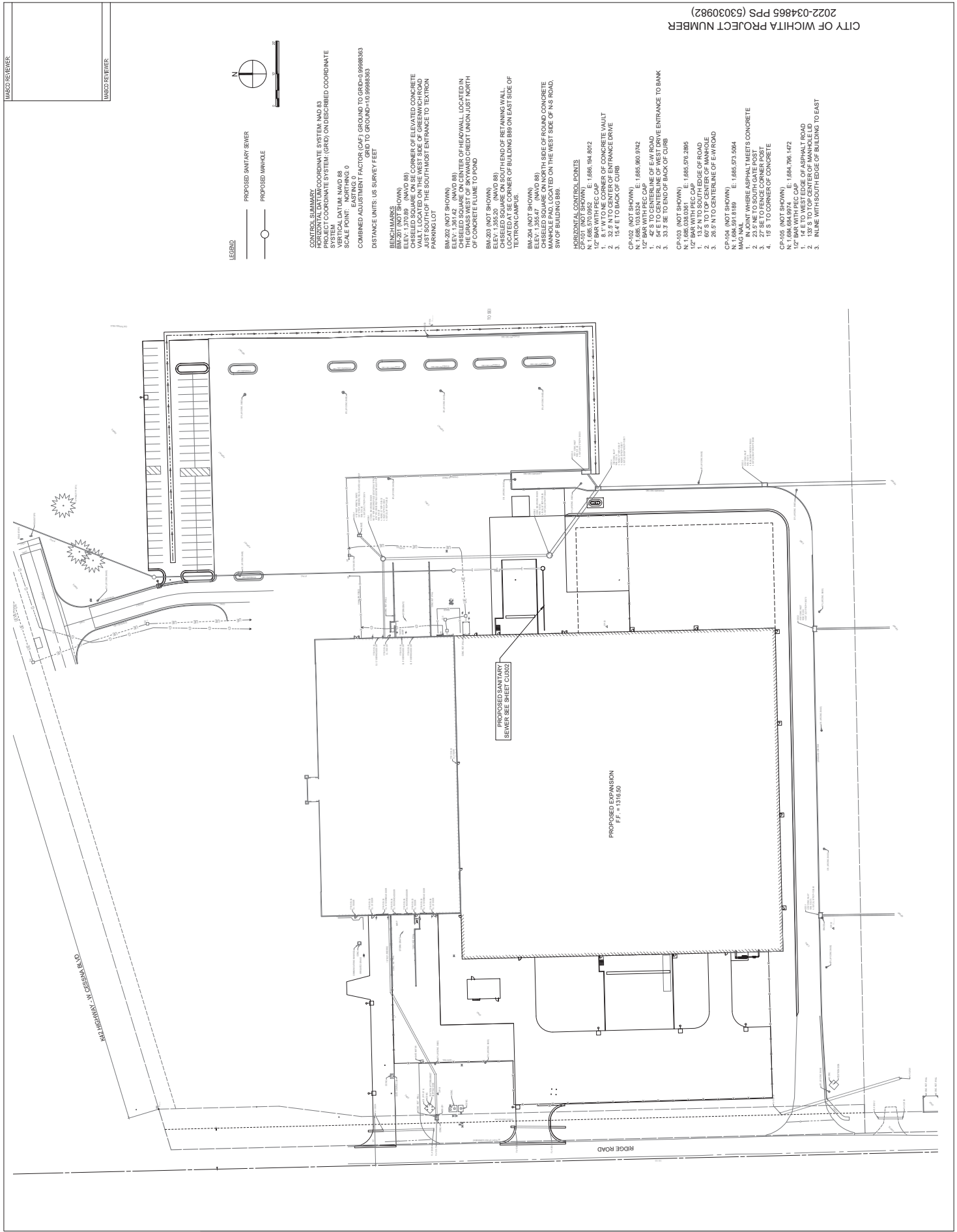
JOB NUMBER:	2202034865
DATE:	01/05/2023
DRAWN:	SWP
CHECKED:	JAS

CONSTRUCTION DOCUMENTS

PPS KEY MAP

CU301
 WEST CAMPUS - P43

CITY OF WICHITA PROJECT NUMBER
 2022-034865 PPS (63030982)



CONTROL SUMMARY
 HORIZONTAL DATUM: COORDINATE SYSTEM NAD 83
 PROJECT COORDINATE SYSTEM: GRID ON DESCRIBED COORDINATE
 VERTICAL DATUM: NAVD 88
 SCALE POINT: NORTHING 0
 COMBINED ADJUSTMENT FACTOR (CAF): GROUND TO GRID=0.99988363
 GRID TO GROUND=-10.99988363
 DISTANCE UNITS: US SURVEY FEET

BENCHMARKS
 BM-201 (NOT SHOWN) ELEV. 1,281.42 (NAVD 88)
 CHEELED SQUARE ON SE CORNER OF ELEVATED CONCRETE VAULT, LOCATED ON THE WEST SIDE OF GREENWICH ROAD
 PARKING LOT
 BM-202 (NOT SHOWN) ELEV. 1,281.42 (NAVD 88)
 CHEELED SQUARE ON CENTER OF HEADWALL, LOCATED IN PARKING LOT, ON THE WEST SIDE OF GREENWICH ROAD
 OF CONCRETE FLUME TO POND
 BM-203 (NOT SHOWN) ELEV. 1,355.20 (NAVD 88)
 CHEELED SQUARE ON SOUTHWEST CORNER OF RETAINING WALL, LOCATED ON THE WEST SIDE OF GREENWICH ROAD
 OF BUILDING 888 ON EAST SIDE OF TEXTRON CAMPUS
 BM-204 (NOT SHOWN) ELEV. 1,355.47 (NAVD 88)
 CHEELED SQUARE ON NORTH SIDE OF ROUND CONCRETE VAULT, LOCATED ON THE WEST SIDE OF GREENWICH ROAD
 SW OF BUILDING 888.

HORIZONTAL CONTROL POINTS
 N 1,685.570.0952 E 1,686.94.8072
 1/2" BAR WITH PEC CAP
 1. 15.4' N TO CENTER OF ENTRANCE DRIVE
 2. 32.2' N TO CENTER OF ENTRANCE DRIVE
 3. 15.4' E TO BACK OF CURB

CP-102 (NOT SHOWN) E 1,685.990.9742
 N 1,685.103.6524 E 1,686.94.8072
 1. 42' S TO CENTERLINE OF E-W ROAD
 2. 34' E TO CENTERLINE OF WEST DRIVE ENTRANCE TO BANK
 3. 35.4' SE TO END OF BACK OF CURB

CP-103 (NOT SHOWN) E 1,685.976.2865
 N 1,684.854.9714 E 1,684.796.1472
 1/2" BAR WITH PEC CAP
 1. 133.5' TO CENTERLINE OF MANKFIELD
 2. 87.2' TO CENTERLINE OF MANHOLE
 3. 26.6' N TO CENTERLINE OF E-W ROAD

CP-104 (NOT SHOWN) E 1,685.973.5064
 N 1,684.851.8189 E 1,684.796.1472
 1. IN JOINT WHERE ASPHALT MEETS CONCRETE
 2. 23.9' NE TO SOUTH GATE POST
 3. 75.8' S TO CORNER OF CONCRETE

CP-105 (NOT SHOWN) E 1,684.796.1472
 N 1,684.854.9714 E 1,684.796.1472
 1/2" BAR WITH PEC CAP
 1. 133.5' TO CENTERLINE OF MANKFIELD
 2. 87.2' TO CENTERLINE OF MANHOLE
 3. IN LINE WITH SOUTH EDGE OF BUILDING TO EAST



Date	01/05/2022	REVISION 1
------	------------	------------

WEST CAMPUS - P43 - EXPANSION
 7121 W. SOUTHWEST BLVD,
 WICHITA, KS

JOB NUMBER	2202034865
DATE	01/05/2022
DRAWN	SMW
CHECKED	JMS

CONSTRUCTION DOCUMENTS

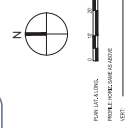
PLAN PROFILE

CU302
 WEST CAMPUS - P43

CITY OF WICHITA PROJECT NUMBER
 2022-034865 PPS (53030982)

AS BUILTS

KEMILLER
 ENGINEERING PA
 117 E. L...
 WICHITA, KS 67202
 (316)264-0242



* PRIOR TO BEGINNING CONSTRUCTION, THE CONTRACTOR SHALL VERIFY THE VERTICAL EXISTING PIPE FLOWLINE. THE PIPE FLOWLINE SHALL BE REPORTED TO THE ENGINEER AND THE ENGINEER SHALL VERIFY THE FLOWLINE. THE CONTRACTOR SHALL BE RESPONSIBLE FOR THE LABOR OR MATERIALS NECESSARY TO COMPLETE THE CONNECTION SHALL BE CONSIDERED SUBSIDIARY TO THE PROJECT.

