

AS-BUILT PLANS

SANITARY SEWER

to serve

LOTS 1-3, BLOCK 2 NORTH INDUSTRIAL PARK 2ND ADDITION

2898 N Mead Street

CITY OF WICHITA, KANSAS

Gary Janzen, P.E. City Engineer

Project Number

PPS-2021-020760 (53030982)

STRUCTURE = WICHITA CONCRETE PIPE
8" PVC SANDERSON, 11 IF
MH COVER/UID = DEETER

BEGAN: 11/14/23
END: 12/12/23

GENERAL NOTES:

- The Contractor shall comply with all applicable safety, health, and environmental regulations, including but not limited to, the current City, Standard Specifications and special Provisions.
- Contractor will be required to provide notice to utility companies a minimum of seventy-two (72) hours prior to any excavation, as follows:
 - Kansas One-Call 687-9470
 - AT&T 1-800-946-6464
 - Block Hills Energy 1-800-694-8889
 - City of Wichita Sewer & Water 1-316-268-9000
 - City of Wichita Traffic 1-316-268-4034
 - City of Wichita Public Works 1-888-442-4000
 - City of Wichita Gas 1-800-544-4857
- Utility service lines, poles, etc. are to be adjusted as necessary by others prior to construction unless the plans show otherwise. The Contractor shall identify a utility to be adjusted by its owner during construction. Existing utilities shall be marked with reflective paint. The Contractor will be required to work around existing utilities within the construction limits without conflict with proposed construction.
- Rubble from the removal of miscellaneous structures and excess excavation which is to be wasted shall be placed at an area to be permitted by the City. All utility lines shall be marked with reflective paint. Locations, in the opinion of the Contractor, shall be marked with reflective paint. All proposed sites must be approved by the Kansas Department of Health and Environment. Any material dumped in waters of the United States or other waters of the State shall be in accordance with applicable regulations. Any material buried or stockpiled beyond approved construction limits will require additional approved construction limits unless buried in a previously approved borrow location.
- Trees and shrubs in public right-of-way which are in direct contact with proposed new construction shall be removed by the Contractor with the City Engineer's consent with proposed new construction shall be saved and protected from damage.
- The Contractor shall give all property owners and/or tenants of developed property abutting the construction a minimum of ten (10) days notice prior to start of construction.
- The Contractor shall be responsible for preserving property lines. The Contractor will be required to re-establish any property lines which are damaged or destroyed by his construction. Survey monuments shall be re-established by a licensed land surveyor in accordance with state laws.
- The Engineering Division shall field locate water valves one (1) mile from the project. The Contractor shall be responsible for preserving such field locations during the construction process. Damaged during construction shall be repaired by the Contractor at his own expense. Valve boxes and water meter vaults shall be installed by the contractor to match field grades by the contractor.
- The Contractor shall notify the inspecting engineer and Dawitza Reinhardt at 316-268-4274 with the City of Wichita with the anticipated construction start date and for this project, will be the responsibility of the Contractor.
- If traffic will be impacted by construction, a traffic control plan must be submitted and approved by the City Engineer. The Contractor shall be responsible for the construction of all traffic control measures to facilitate construction for all traffic control measures to facilitate construction shall conform to the latest version of the Manual on Uniform Traffic Control Devices (MUTCD) as published by the Federal Highway Administration. All costs associated with construction markings and signage shall be the Contractor's responsibility.
- All elevations shown are MAD 88.
- All areas disturbed during construction that will not be under proposed pavement shall be restored to match existing conditions.

SANITARY SEWER

to serve

LOTS 1-3, BLOCK 2 NORTH INDUSTRIAL PARK 2ND ADDITION

2898 N Mead Street

CITY OF WICHITA, KANSAS

Gary Janzen, P.E. City Engineer

Project Number

PPS-2021-020760 (53030982)

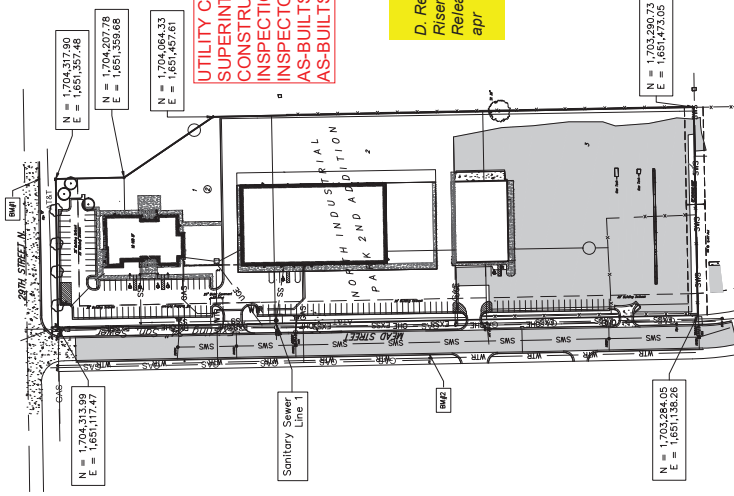
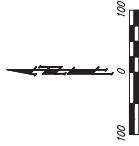
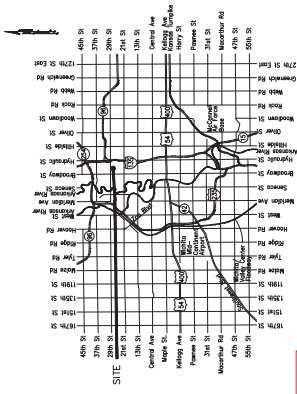
STRUCTURE = WICHITA CONCRETE PIPE
8" PVC SANDERSON, 11 IF
MH COVER/UID = DEETER

BEGAN: 11/14/23
END: 12/12/23

Sheet Index

- | Title Sheet | 1 |
|------------------------------|---|
| Line 1 Plan / Profile | 2 |
| Precast SS Manhole Detail | 3 |
| Manhole Frame & Cover Detail | 4 |
| Riser Assembly Sewer Detail | 5 |
| Copy of Plot | 6 |

Vicinity Map



UTILITY CONTRACTOR = PEARSON CONSTRUCTION
SUPERINTENDENT = MASON HEWITT
CONSTRUCTION STAKING = BAUGHMAN CO.
INSPECTOR: BEAU GIBLER
AS-BUILTS BY: BEAU GIBLER 11/20/23
AS-BUILTS REVISED BY: LARRY POWELL 1-17-2024.

D. Reinhardt - City of Wichita, Inspector
Risers
Release Date: 1/31/2024
apr 25/2024

BENCHMARKS

- BM1: Chained square on top of curb located 0.5' east and 25.4' north of the northeast corner of Lot 1, Block 2, North Industrial Park 2nd Addition to Wichita, Sedgwick County, Kansas. Elev. = 1324.68 (NAD 83)
- BM2: Chained square on top of curb located 55.6' west and 10.0' north of the northeast corner of Lot 1, Block 2, North Industrial Park 2nd Addition to Wichita, Sedgwick County, Kansas. Elev. = 1323.68 (NAD 83)

APPROVED AS NOTED
BY WICHITA PUBLIC WORKS
ENGINEERING DIVISION
An approved copy of these plans signed by City staff are required on-site.

NOTE TO CONTRACTORS
Installation, inspection and testing for this project is to be provided by a Licensed Consulting Engineering Firm and shall be in accordance with the City of Wichita standard construction engineering practices and standards. The Contractor shall be responsible for the certification of a Licensed Professional Engineer in the City of Wichita. All construction shall conform to the City of Wichita Standard Specifications and Special Provisions (on file and available at Wichita.gov).
An approved copy of these plans signed by City staff are required on-site.

BAUGHMAN # 23-10-E660

August 23, 2021



BAUGHMAN COMPANY
315 Ellis St., Wichita, KS 67211 316-262-1271
Baughman@cc.com



SEWER SERVICE TABLE

NUMBER	TYPE	LOCATION	LOT NO.	BLOCK NO.	LINE NO.	STATION/DIRECTION	FOR INFORMATION ONLY	
							APPROXIMATE LENGTH 4" PIPE	HORIZONTAL
1	4" Sub	2	2	1	1	0+11.0, RL	4.6'	100'-0"
2	4" Sub	2	2	1	1	0+11.0, RL	4.1'	100'-0"

NOTE: Vertical River Pipe shall be extended to 2' minimum above ground water elevation and 4' maximum below proposed ground elevation.

NOTES:
1. In the event the existing manhole is lined, contractor shall be responsible for damaged manhole in accordance with City of Wichita Standard Specifications.
2. If the existing manhole is not lined, contractor shall be responsible for damaged manhole in accordance with City of Wichita Standard Specifications.
3. All existing manholes shall be backfilled with sand. The sand backfill shall be within two feet of existing grade and shall be compacted during construction. All existing manholes shall be flushed & vibrated.



165

5550-034

034

STAB DEPTH = 9.10'
TOP LID ELEV = 1315.03
SS MH COW ID# 5550-165

STAB DEPTH = 8.40'
TOP LID ELEV = 1314.03
SS MH COW ID# 5550-034

Sta. 0+11.0, San. Line 1
Existing Manhole
Field Verify
If Inverts Require
Regrade Invert if Required
to Ensure Smooth Flow

CAUTION
Existing Gas,
OHE, and AT&T.
Verify depth &
location.

STAB DEPTH OF CL OF N. 28TH ST.
408' SOUTH OF
CL OF N. 28TH ST.

Sta. 0+11.0, San. Line 1
Existing Manhole
Field Verify
If Inverts Require
Regrade Invert if Required
to Ensure Smooth Flow

CAUTION
Existing Gas,
OHE, and AT&T.
Verify depth &
location.

STAB DEPTH OF CL OF N. 28TH ST.
408' SOUTH OF
CL OF N. 28TH ST.

165

5550-034

034



165

5550-034

034

