

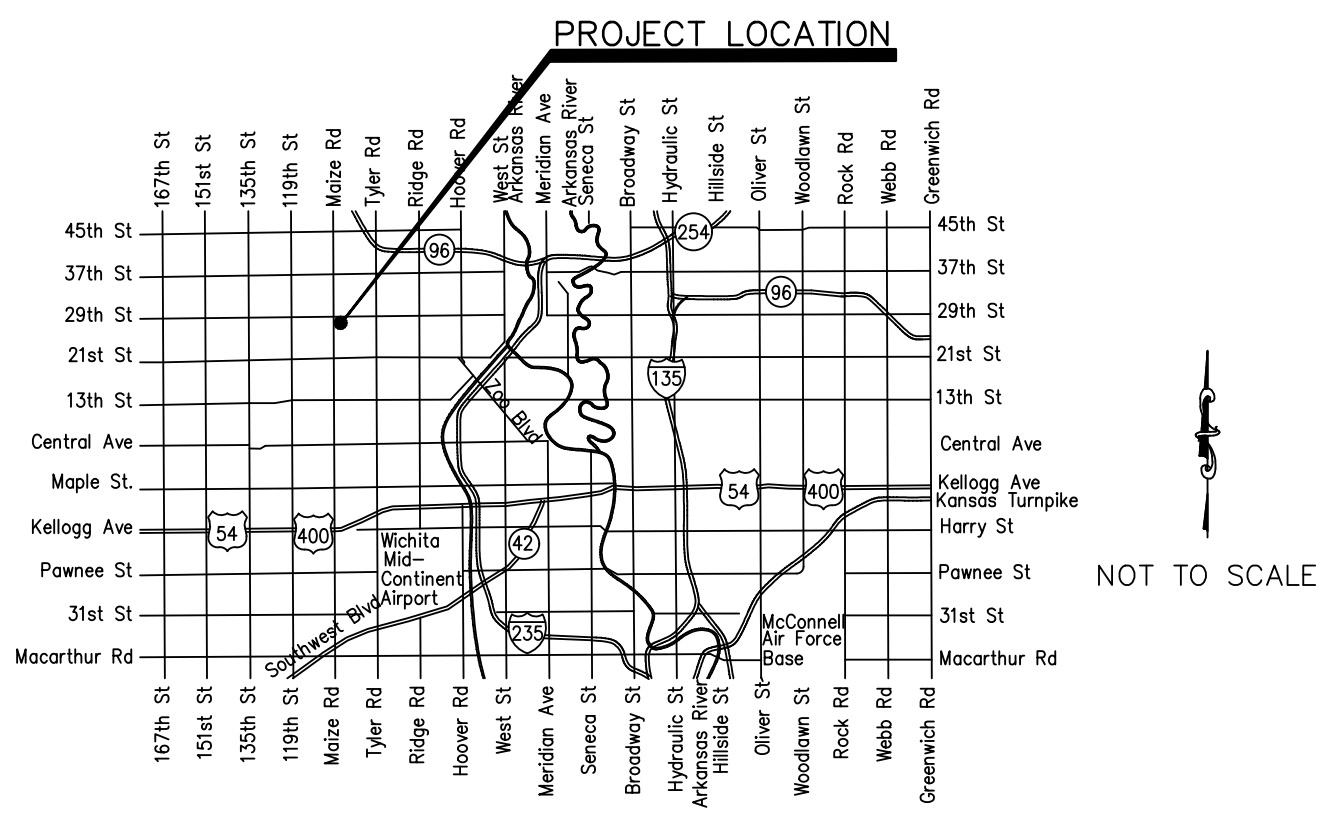
GENERAL NOTES:

- THE CONTRACTOR SHALL COMPLY WITH ALL APPLICABLE SAFETY REGULATIONS. ALL CONSTRUCTION SHALL BE COMPLETED FOLLOWING CURRENT CITY STANDARD SPECIFICATIONS AND SPECIAL PROVISIONS.
- THE CONTRACTOR WILL BE REQUIRED TO PROVIDE NOTICE TO UTILITY COMPANIES A MINIMUM OF SEVENTY-TWO (72) HOURS PRIOR TO ANY EXCAVATION, AS FOLLOWS:
KANSAS ONE-CALL 687-2470
THE CONTRACTOR MUST NOTIFY THE FOLLOWING IN CASE OF AN EMERGENCY:
AT&T 1-800-246-8464
BLACK HILLS ENERGY 1-800-694-8989
CITY OF WICHITA WATER & SEWER 1-316-219-8921
CITY OF WICHITA STORMWATER 1-316-268-4090
CITY OF WICHITA TRAFFIC 1-316-268-4034
COX COMMUNICATIONS 1-888-249-3530
KANSAS GAS SERVICE 1-888-482-4950
EVERGY 1-800-544-4857
- UTILITY SERVICE LINES, POLES, ET CETERA. ARE TO BE ADJUSTED AS NECESSARY BY OTHERS PRIOR TO CONSTRUCTION UNLESS THE PLANS SPECIFICALLY CALL FOR THEIR ADJUSTMENT BY THE CONTRACTOR OR UNLESS THE PLANS SPECIFICALLY IDENTIFY A UTILITY TO BE ADJUSTED BY ITS OWNER DURING CONSTRUCTION. EXISTING UTILITIES AND THEIR LOCATION, AS SHOWN ON THE PLANS, REPRESENT THE BEST INFORMATION REASONABLY OBTAINABLE FOR DESIGN. THE CONTRACTOR WILL BE REQUIRED TO WORK AROUND EXISTING UTILITIES WITHIN THE RIGHT-OF-WAY THAT DO NOT CONFLICT WITH PROPOSED CONSTRUCTION.
- RUBBLE FROM THE REMOVAL OF MISCELLANEOUS STRUCTURES AND EXCESS EXCAVATION THAT IS TO BE WASTED SHALL BE DISPOSED OF ON SITES TO BE PROVIDED BY THE CONTRACTOR. THESE SITES SHALL BE APPROVED BY THE ENGINEER AS TO SUITABILITY, APPEARANCE AND SITE LOCATION. LOCATIONS, IN THE OPINION OF THE ENGINEER, THAT WILL LEAVE AN UNSIGHTLY APPEARANCE WILL NOT BE APPROVED. ALL DISPOSAL SITES MUST BE APPROVED BY THE KANSAS DEPARTMENT OF HEALTH AND ENVIRONMENT. MATERIAL EITHER STOCKPILED OR DISPOSED OF IN A FLOODPLAIN WILL REQUIRE A KANSAS STATE BOARD OF AGRICULTURE FLOODPLAIN FILL PERMIT. ANY MATERIAL DUMPED IN WATERS OF THE UNITED STATES OR WETLANDS IS SUBJECT TO U.S. CORPS OF ENGINEERS PERMITTING REGULATIONS. ANY MATERIAL BURIED OR STOCKPILED BEYOND APPROVED CONSTRUCTION LIMITS WILL REQUIRE ADDITIONAL ARCHAEOLOGICAL INVESTIGATIONS UNLESS BURIED OR STOCKPILED IN A PREVIOUSLY APPROVED BORROW LOCATION.
- TREES AND SHRUBS IN PUBLIC RIGHT-OF-WAY WHICH ARE IN DIRECT CONFLICT WITH PROPOSED NEW CONSTRUCTION SHALL BE REMOVED BY THE CONTRACTOR WITH THE ENGINEER'S APPROVAL. TREES AND SHRUBS THAT ARE NOT IN DIRECT CONFLICT WITH PROPOSED NEW CONSTRUCTION SHALL BE SAVED AND PROTECTED FROM DAMAGE.
- IF PRACTICABLE THE CONTRACTOR SHALL GIVE ALL PROPERTY OWNERS AND/OR TENANTS OF DEVELOPED PROPERTY ABUTTING THE CONSTRUCTION OF THIS PROJECT A MINIMUM OF TEN (10) DAYS NOTICE PRIOR TO START OF CONSTRUCTION.
- THE CONTRACTOR SHALL BE RESPONSIBLE FOR PRESERVING PROPERTY IRONS. THE CONTRACTOR WILL BE REQUIRED TO REESTABLISH ANY PROPERTY IRONS WHICH ARE DAMAGED OR DESTROYED BY HIS CONSTRUCTION OPERATIONS. SUCH IRONS SHALL BE REESTABLISHED BY A LICENSED LAND SURVEYOR IN ACCORDANCE WITH STATE LAWS.
- THE ENGINEERING DIVISION SHALL FIELD LOCATE WATER VALVES ONE TIME DURING CONSTRUCTION WHEN REQUESTED BY THE CONTRACTOR. IT SHALL BE THE CONTRACTOR'S RESPONSIBILITY TO PRESERVE SUCH FIELD LOCATIONS DURING THE CONSTRUCTION PROCESS. WATER VALVES, VALVE BOXES OR FIRE HYDRANTS DAMAGED DURING CONSTRUCTION SHALL BE REPAIRED BY CONTRACTOR AT THEIR OWN EXPENSE. VALVE BOXES AND WATER METERS WITHIN THE PROJECT LIMITS SHALL BE ADJUSTED TO MATCH FINAL GRADES BY THE CONTRACTOR.
- THE CONTRACTOR SHALL NOTIFY THE CONSULTANT ENGINEER AS WELL AS THE CITY, DAWNITA REINHARDT AT 316-650-0740, WITH THE ANTICIPATED CONSTRUCTION START DATE AND NOTIFY THEM OF PROJECT COMPLETION. STAKING AND INSPECTION FOR THIS PROJECT WILL BE THE RESPONSIBILITY OF THE CONTRACTOR.
- IF TRAFFIC WILL BE IMPACTED BY CONSTRUCTION, A TRAFFIC CONTROL PLAN MUST BE SUBMITTED AND APPROVED BY THE CITY TRAFFIC ENGINEER AT TRAFFIC@WICHITA.GOV BEFORE CONSTRUCTION CAN BEGIN. THE CONTRACTOR SHALL BE RESPONSIBLE FOR ALL TRAFFIC CONTROL MEASURES TO FACILITATE CONSTRUCTION. ALL CONSTRUCTION ZONE MARKINGS AND SIGNAGE SHALL CONFORM TO THE LATEST VERSION OF THE MANUAL ON UNIFORM TRAFFIC CONTROL DEVICES (MUTCD) AS PUBLISHED BY THE US DEPT. OF TRANSPORTATION, FEDERAL HIGHWAY ADMINISTRATION. ALL COSTS ASSOCIATED WITH CONSTRUCTION MARKINGS AND SIGNAGE SHALL BE THE CONTRACTORS RESPONSIBILITY.
- ALL ELEVATIONS SHOWN ARE NAVD 88.
- ALL AREAS DISTURBED DURING CONSTRUCTION THAT WILL NOT BE UNDER PROPOSED PAVEMENT SHALL BE RESTORED TO MATCH EXISTING CONDITIONS.

- ANY SIDEWALK, DRIVE APPROACH, OR STREET PAVEMENT REMOVED TO CONSTRUCT PROJECT MUST HAVE A PAVEMENT CUT PERMIT AND BE REPLACED BY THE CITY CONTRACTOR. PERMITS CAN BE OBTAINED BY CALLING 316-268-4501 OR 316-268-4480.
- ALL APPLICABLE FEES (TAP, EQUITY, IN LIEU OF & MAIN BENEFIT) MUST BE PAID BEFORE ANY CONNECTIONS CAN BE MADE ON THIS PROJECT. QUOTES CAN BE OBTAINED ON FEES BE CALLING 316-268-4555.
- CITY MAINTENANCE OF SANITARY SEWER MAINS ENDS AT LAST STRUCTURE WITHIN THE EASEMENT OR RIGHT-OF-WAY.
- ALL STUBS AND CAPPED PIPES SHALL BE LOCATED WITH GREEN PLASTIC TAPE IN THE SAME MANNER AS RISERS.
- CONNECTING TO EXISTING MANHOLES:
PRIOR TO LAYING SEWER LINES USING EXISTING STUBS IN EXISTING MANHOLES, THE CONTRACTOR SHALL EXPOSE AND VERIFY THE ELEVATION, GRADE AND ALIGNMENT OF EXISTING STUBS AND NOTIFY THE ENGINEER OF ANY DEVIATION FROM THE PLANS, WHERE THE STUB IS UNUSABLE DUE TO ELEVATION GRADE OR ALIGNMENT, THE CONTRACTOR SHALL REMOVE THE STUB AND PLUG THE HOLE, AND RESHAPE THE EXISTING MANHOLE INVERT TO PROVIDE SMOOTH FLOW. WHERE CONNECTING TO AN EXISTING MANHOLE THAT DOES NOT HAVE AN EXISTING STUB, THE CONTRACTOR SHALL CORE CUT INTO EXISTING MANHOLE WALL TO MAKE CONNECTION USING APPROVED WATER STOP GASKET, AND RESHAPE THE EXISTING MANHOLE INVERT TO PROVIDE SMOOTH FLOW. THE COST TO CONNECTING TO EXISTING MANHOLES IS INCIDENTAL TO THE PROJECT.
- CONTRACTOR SHALL LIMIT THE EXTENT OF TRENCH OPEN OPEN OVERNIGHT AND WEEKENDS TO LESS THAN 50 FEET.
- CONTRACTOR SHALL PROVIDE POSITIVE DRAINAGE AWAY FROM ALL MANHOLE COVERS.
- THE CONTRACTOR SHALL PREVENT ANY CONSTRUCTION DEBRIS FROM ENTERING THE EXISTING SANITARY SEWER DURING CONSTRUCTION.
- THE CONTRACTOR SHALL BE RESPONSIBLE FOR MAINTAINING CONTINUOUS FLOW OF SEWAGE THROUGH CONSTRUCTION. CONTRACTORS PROPOSED METHOD FOR MAINTAINING SEWAGE FLOW SHALL BE SUBMITTED AND APPROVED BY THE SEWER MAINTENANCE DIVISION (316-268-4073) PRIOR TO STARTING AND BY-PASSING OF SEWAGE FLOWS.
- ANY OVER EXCAVATION FROM MANHOLE AND PIPE REMOVAL SHALL BE BACKFILLED WITH AB-3 COMPACTED TO 90-95% ASTM D698.
- THE CONTRACTOR SHALL PROTECT FROM DAMAGE AND SUPPORT EXISTING UTILITIES THROUGH CONSTRUCTION AS APPROVED BY THE UTILITY OWNER AND THE ENGINEER AT THE CONTRACTORS EXPENSE.
- SITE PREPARATION AND RESTORATION SHALL BE SUBSIDIARY TO THE PROJECT.
- THE CONTRACTOR SHALL USE BEST MANAGEMENT PRACTICES (BMP'S) TO PREVENT ERODED SOIL FROM ENTERING DITCHES, CULVERTS, AND DRAINAGE BASINS. THE CONTRACTOR SHALL FOLLOW THE INTENT OF THE BMP'S WHICH ACT AS A GUIDELINE.
- EACH BIDDER SHALL VISIT THE SITE OF THE PROJECT BEFORE SUBMITTING A PROPOSAL IN ORDER TO BECOME BETTER INFORMED OF THE EXISTING FIELD CONDITIONS AND OBSTACLES WHICH MIGHT BE ENCOUNTERED DURING CONSTRUCTION. EACH BIDDER SHOULD UNDERSTAND THAT NO ADDITIONAL COMPENSATION WILL BE AWARDED FOR EXTRA WORK THAT SHOULD HAVE BEEN EVALUATED PRIOR TO BIDDING.
- EXISTING UTILITIES AND THEIR LOCATIONS, AS SHOWN ON THE PLANS REPRESENT THE BEST INFORMATION OBTAINABLE FOR DESIGN. LOCATION INFORMATION HAS BEEN OBTAINED FROM VARIOUS COMPANIES AND IS EITHER FROM COMPANY UTILITY DRAWINGS OR COMPANY PROVIDED FIELD LOCATIONS. THE PLAN LOCATIONS SHOWN ARE NOT GUARANTEED. ADDITIONAL EXISTING UTILITIES MAY BE ENCOUNTERED.
- ANY AND ALL UTILITY SYSTEM COMPONENTS DAMAGED DURING CONSTRUCTION SHALL BE REPAIRED AT THE CONTRACTOR'S EXPENSE.
- ALL TRENCHING IN PAVEMENT OR DRIVEWAYS, WHICH WILL BE REQUIRED TO CARRY TRAFFIC UNTIL PERMANENT PAVING REPLACEMENT, SHALL BE TOPPED WITH A MINIMUM OF 6" CRUSHED ROCK (COMPACTED) TO BE INCIDENTAL TO THE PROJECT. CONTRACTOR SHALL BE REQUIRED TO MAINTAIN TEMPORARY CRUSHED ROCK UNTIL PERMANENT PAVEMENT IS INSTALLED.
- THE PRECAST MANUFACTURER SHALL PROVIDE A SEALED DESIGN DETAIL FOR ALL PRECAST ITEMS USED ON THE PROJECT TO INSURE THE INTENT OF THE PLANS ARE MET.
- MAINTAIN A MINIMUM OF 10-FOOT HORIZONTAL SEPARATION BETWEEN ALL WATER LINES (MAINS, SERVICES, AND FIRE HYDRANTS), AND ALL SANITARY SEWER LINES (MAINS, SERVICES, AND MANHOLES). ALL SEPARATION DISTANCES ARE TO BE MEASURED FROM EDGE-TO-EDGE AT THE CLOSEST POINT.
- MAINTAIN A MINIMUM OF 2-FOOT VERTICAL SEPARATION BETWEEN ALL WATER LINES (MAINS AND SERVICES) AND ALL GRAVITY SANITARY SEWER LINES (MAINS, SERVICES, AND MANHOLES) AT CROSSINGS. ALL SEPARATION DISTANCES ARE TO BE MEASURED FROM EDGE-TO-EDGE, AT THE CLOSEST POINT.
- MAINTAIN A MINIMUM OF 2-FOOT VERTICAL SEPARATION BETWEEN ALL WATER LINES (MAIN AND SERVICES) AND ALL PRESSURIZED SANITARY SEWER LINES (FORCED MAINS AND SERVICES) AT CROSSINGS. WATERLINES MUST ALWAYS BE PLACED ABOVE PRESSURIZED SANITARY SEWER LINES WHERE THEY CROSS. ALL SEPARATION DISTANCES ARE TO BE MEASURED FROM EDGE-TO-EDGE, AT THE CLOSEST POINT.

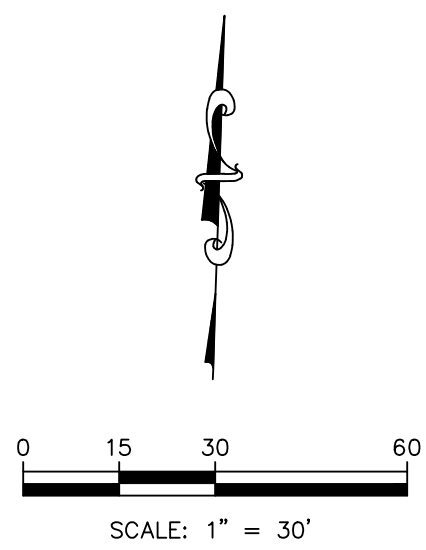
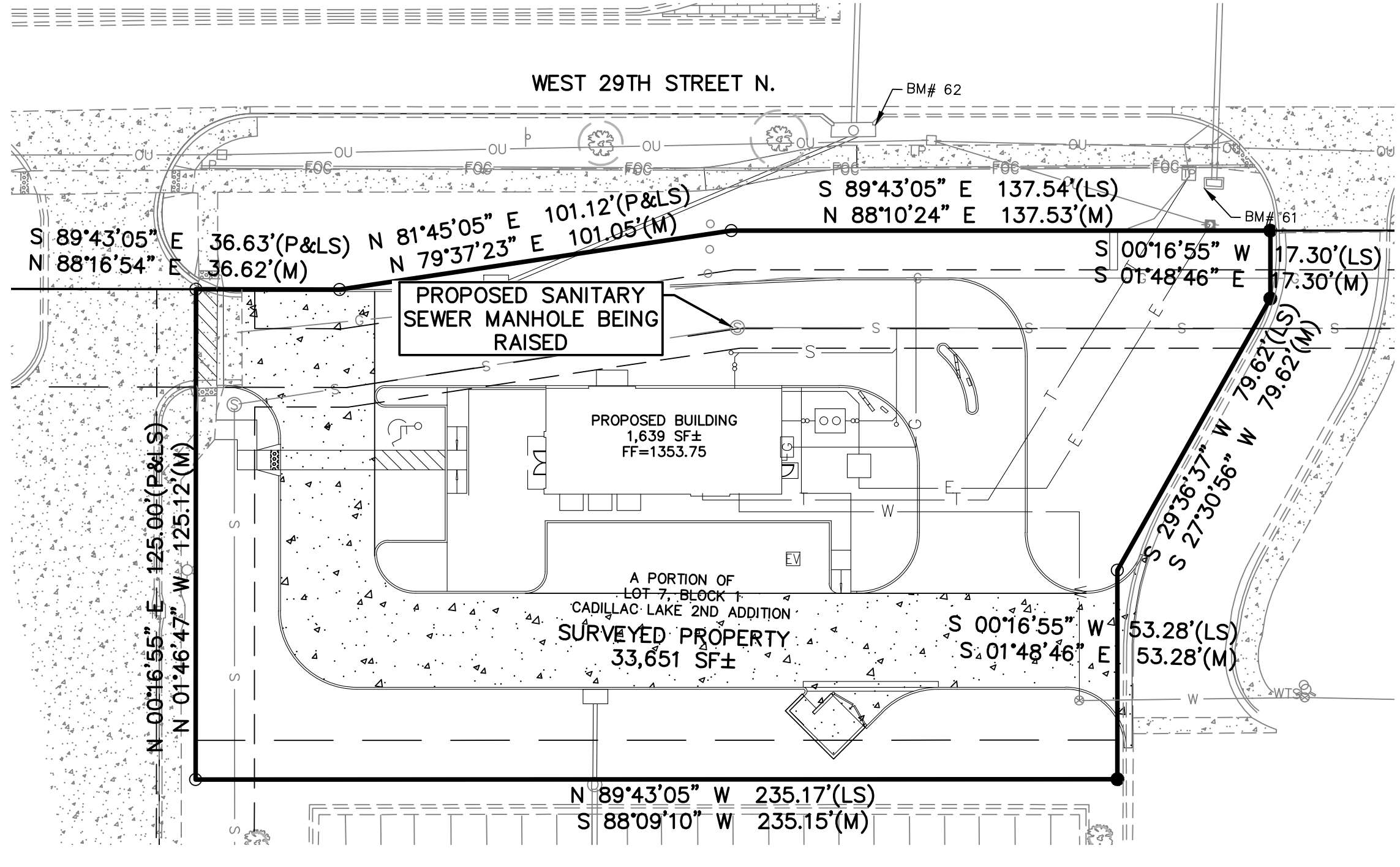
SANITARY SEWER IMPROVEMENTS TO SERVE LOT 7, BLOCK 1 CADILLAC LAKE 2ND ADDITION 10209 W. 29TH STREET N. CITY OF WICHITA, KANSAS

PAUL GUNZELMAN, P.E. INTERIM CITY ENGINEER
PROJECT NUMBER
2023-014819PPS (53030982)



Date: 2023-11-25
Inspector: A. Thompson
Design/Inspecting Firm: Kaw Valley Engineering, Inc.
Contractor: Farha Construction
Subcontractor: Sooter Excavating LLC
Built in general conformance to construction plans, except where noted on plans.

LOCATION MAP
CITY OF WICHITA, KANSAS



BENCHMARKS

DATUM BENCHMARK:
VERTICAL DATUM IS NAVD 88 DERIVED FROM USING THE SEDGWICK COUNTY NTRIP NETWORK, ORTHOMETRIC HEIGHT WAS DETERMINED USING THE GEOID 18 (CONUS) MODEL. UNITS ARE U.S. SURVEY FEET.

BENCHMARKS:
BM #61: CHISELED SQUARE IN SOUTHWEST CORNER OF SQUARE GRATE INLET, 6' SOUTHEAST OF TELEPHONE PEDESTAL AND 8.5' NORTH OF UTILITY POLE WITH TRANSFORMER NEAR NORTHEAST CORNER OF LOT 7. ELEV.=1351.71
BM #62: FOUND CHISELED "X" INSIDE OF SQUARE ON NORTHEAST CORNER OF CURB INLET, 14' WEST-NORTHWEST OF LIGHT POLE AND 4.5' NORTH OF SIDEWALK ON NORTH SIDE OF LOT 7. ELEV.=1351.65

CAUTION - NOTICE TO CONTRACTOR
THE CONTRACTOR IS SPECIFICALLY CAUTIONED THAT THE LOCATION AND/OR ELEVATION OF EXISTING UTILITIES AS SHOWN ON THESE PLANS IS BASED ON RECORDS OF THE VARIOUS UTILITY COMPANIES AND, WHERE POSSIBLE, MEASUREMENTS TAKEN IN THE FIELD. THE INFORMATION IS NOT TO BE RELIED ON AS BEING EXACT OR COMPLETE. THE CONTRACTOR MUST CALL THE APPROPRIATE UTILITY COMPANY AT LEAST 72 HOURS BEFORE ANY EXCAVATION TO REQUEST EXACT FIELD LOCATION OF UTILITIES. IT SHALL BE THE RESPONSIBILITY OF THE CONTRACTOR TO RELOCATE ALL EXISTING UTILITIES WHICH CONFLICT WITH PROPOSED IMPROVEMENTS SHOWN ON THE PLANS. **THE CONTRACTOR SHALL EXPOSE EXISTING UTILITIES AT LOCATIONS OF POSSIBLE CONFLICTS PRIOR TO ANY CONSTRUCTION.**

SAFETY NOTICE TO CONTRACTOR
IN ACCORDANCE WITH GENERALLY ACCEPTED CONSTRUCTION PRACTICES, THE CONTRACTOR WILL BE SOLELY AND COMPLETELY RESPONSIBLE FOR CONDITIONS OF THE JOB SITE, INCLUDING SAFETY OF ALL PERSONS AND PROPERTY DURING PERFORMANCE OF THE WORK. THIS REQUIREMENT WILL APPLY CONTINUOUSLY AND NOT BE LIMITED TO NORMAL WORKING HOURS.

WARRANTY / DISCLAIMER
THE DESIGNS REPRESENTED IN THESE PLANS ARE IN ACCORDANCE WITH ESTABLISHED PRACTICES OF CIVIL ENGINEERING FOR THE DESIGN FUNCTIONS AND USES INTENDED BY THE OWNER AT THIS TIME. HOWEVER, NEITHER KAW VALLEY ENGINEERING, INC NOR ITS PERSONNEL CAN OR DO WARRANTY THESE DESIGNS OR PLANS AS CONSTRUCTED, EXCEPT IN THE SPECIFIC CASES WHERE KAW VALLEY ENGINEERING PERSONNEL INSPECT AND CONTROL THE PHYSICAL CONSTRUCTION ON A CONTEMPORARY BASIS AT THE SITE.

INDEX TO SHEETS

- TITLE SHEET
- SANITARY SEWER PLAN & PROFILE
- EROSION CONTROL PLAN
- PRECAST SANITARY SEWER MANHOLE
- MANHOLE FRAME & COVER DETAIL
- CURB INLET PROTECTION DETAIL
- SILT FENCE BARRIER DETAIL
- FINAL PLAT

APPROVED AS NOTED
BY WICHITA PUBLIC WORKS
ENGINEERING DIVISION

Engineering Approved by Shawn Mellies 06/30/2023

Utilities Approved by Deb Ary 06/30/23023

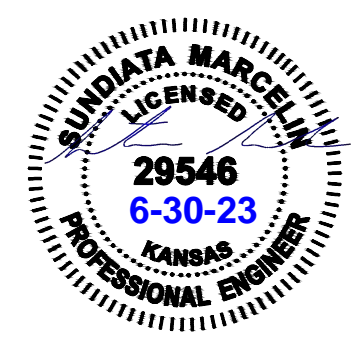
NOTE TO CONTRACTORS

Inspection and testing for this project is to be provided by a Licensed Consulting Engineering Firm under contract with the Owner/Developer. Said inspection to be in accordance with the City of Wichita standard construction engineering practices and certified by a Licensed Professional Engineer in the state of Kansas. No work shall be performed by the Contractor without such inspection nor shall any work be commenced without written authorization by City Engineering. All Construction and Materials shall comply with the current City of Wichita Specifications and Standards and Special Provisions. (on file and available at Wichita.gov).

An approved copy of these plans signed by City staff are required on-site.

THIS PLAN SHEET IS PART OF AN OVERALL KAW VALLEY ENGINEERING PLAN SET FOR THE SPECIFIC IMPROVEMENTS CONTEMPLATED THEREIN. AS SUCH, THE INFORMATION CONTAINED MAY BE LIMITED AND SHOULD ONLY BE INTERPRETED WITHIN THE CONTEXT OF THE COMPLETE PLAN SET.

JUNE 2023



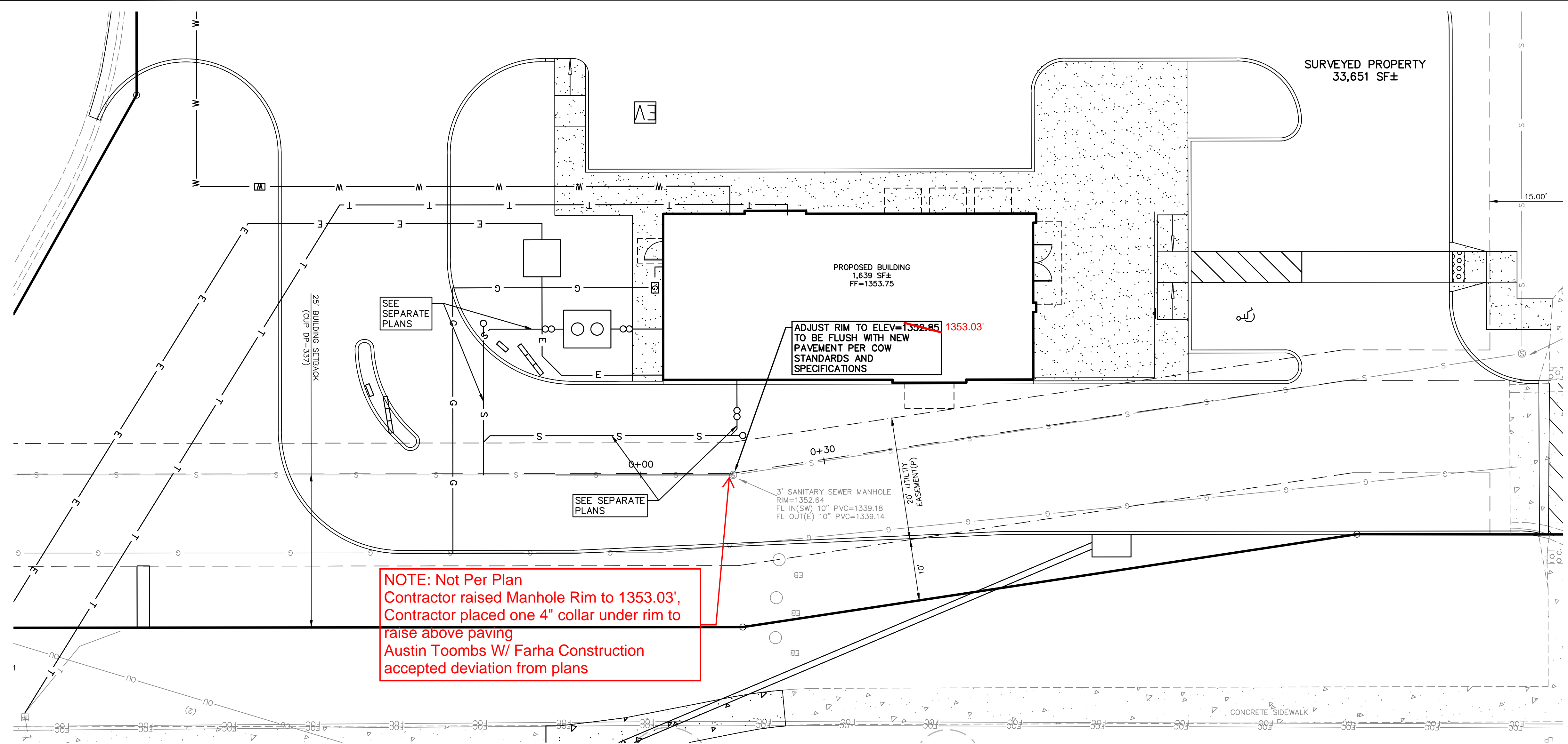
PROJ. NO. G23_2573 DSN: KP SUNDIATA MARCELIN
CFN: 2573DTS DWN: JML ENGINEER
KS # 29546

200 N. EMPORIA, SUITE 100
WICHITA, KANSAS 67202
PH. (316) 440-4304
wh@kveg.com | www.kveg.com

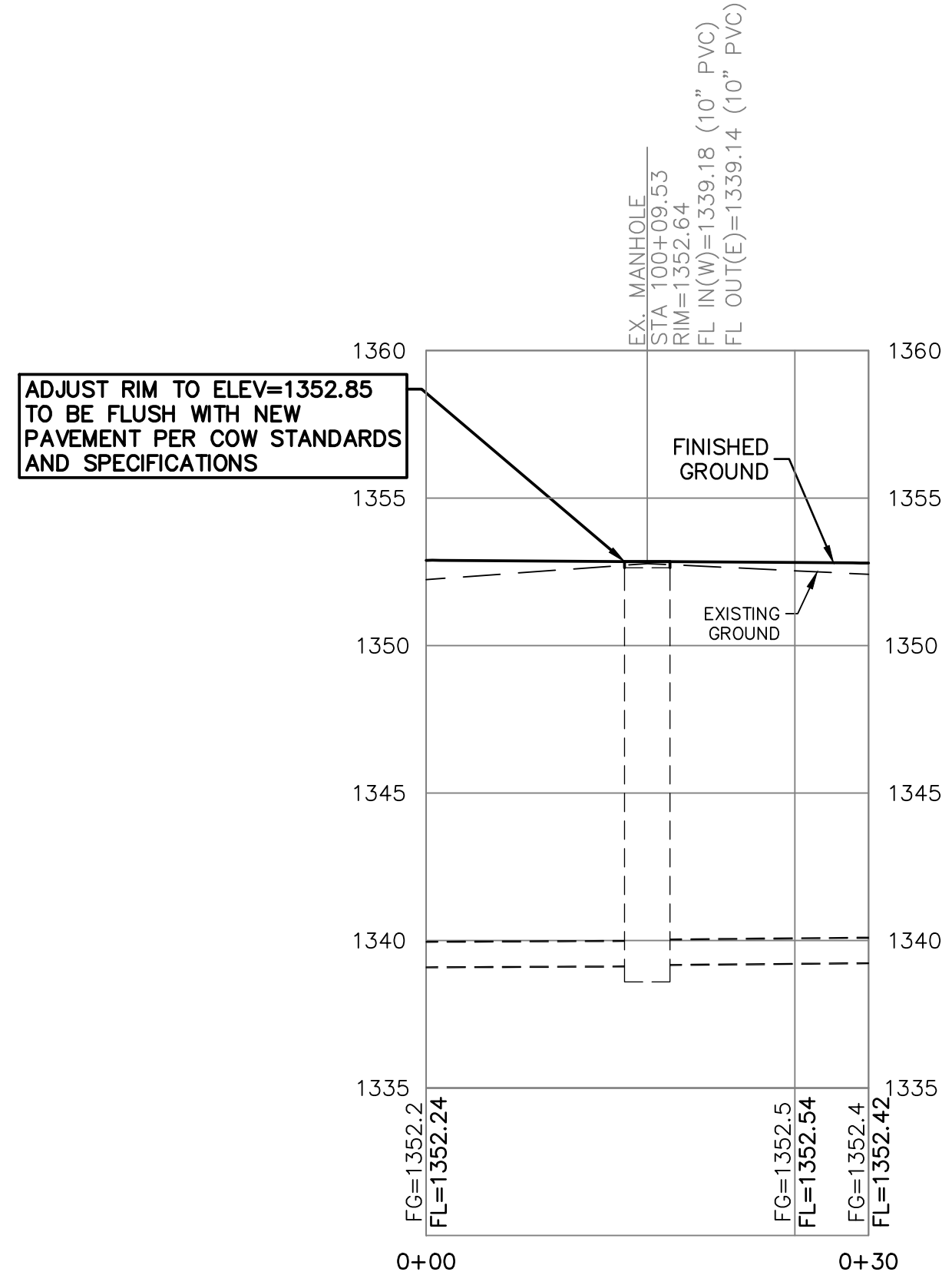
KAW VALLEY ENGINEERING

KAW VALLEY ENGINEERING, INC., IS AUTHORIZED TO OFFER ENGINEERING SERVICES BY KANSAS STATE CERTIFICATE OF AUTHORIZATION # E-113. EXPIRES 12/31/24

THE COORDINATES PROVIDED IN THESE PLANS ARE FOR INFORMATION AND CHECKING PURPOSES ONLY. IT IS THE CONTRACTOR'S RESPONSIBILITY TO CALCULATE CONSTRUCTION STAKING COORDINATES ACCORDING TO THE DIMENSIONS SHOWN ON THESE PLANS. CONTRACTOR SHALL VERIFY THE ACCURACY OF THE COORDINATES SHOWN BEFORE CONSTRUCTION.



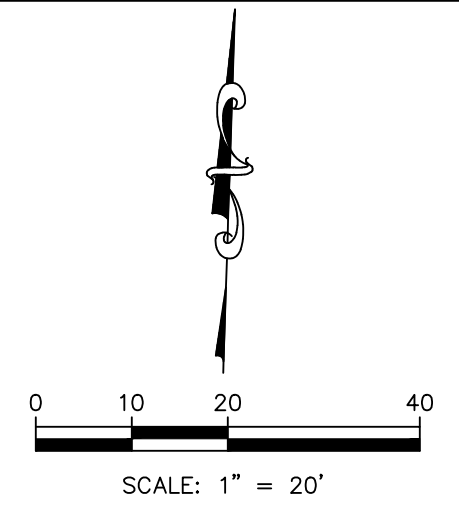
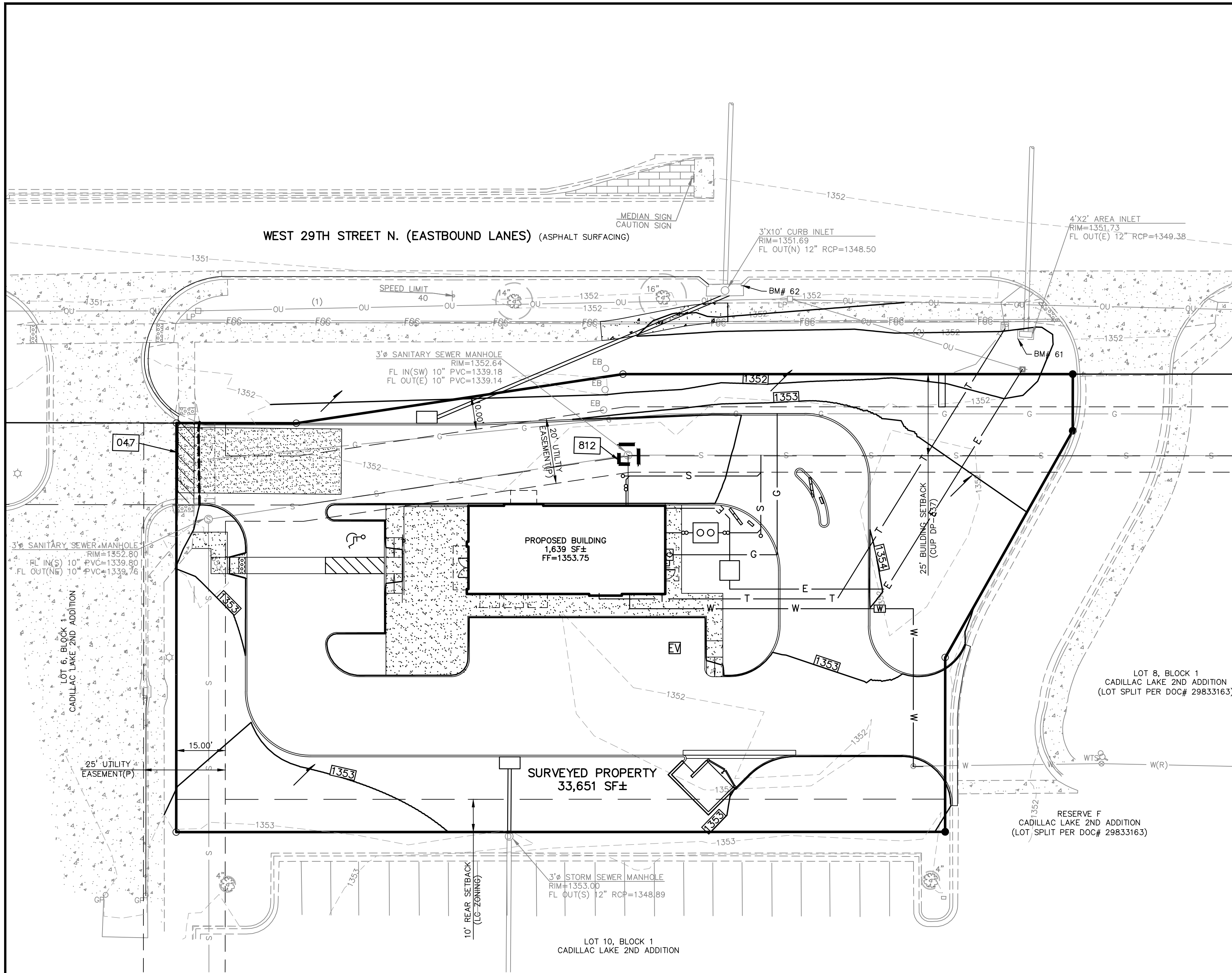
NOTE: Not Per Plan
Contractor raised Manhole Rim to 1353.03',
Contractor placed one 4" collar under rim to
raise above paving
Austin Toombs W/ Farha Construction
accepted deviation from plans



THIS PLAN SHEET IS PART OF AN OVERALL KAW VALLEY
ENGINEERING PLAN SET FOR THE SPECIFIC IMPROVEMENTS
CONTEMPLATED THEREIN. AS SUCH, THE INFORMATION
CONTAINED MAY BE LIMITED AND SHOULD ONLY BE
INTERPRETED WITHIN THE CONTEXT OF THE COMPLETE PLAN SET.

REV	DATE	DESCRIPTION
0	06/30/23	INITIAL ISSUE
DSN	DWN	CHK
SM	JML	SMM

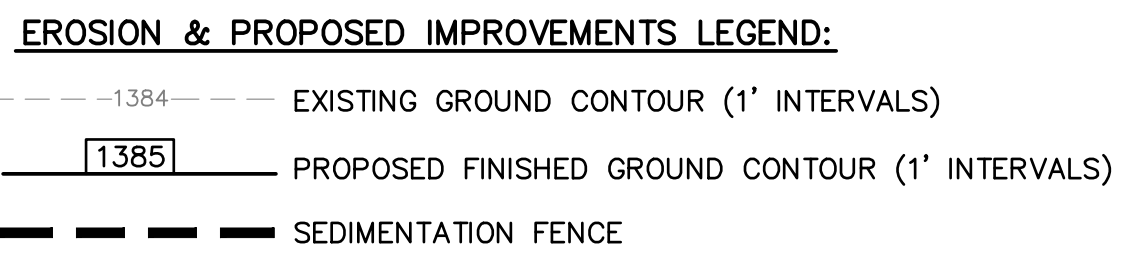
<p>SUNDIATA MARCELIN ENGINEER KS # 29546</p>	<p>KAW VALLEY ENGINEERING KAW VALLEY ENGINEERING, INC. IS AUTHORIZED TO OFFER ENGINEERING SERVICES BY KANSAS STATE CERTIFICATE OF AUTHORIZATION # E-113. EXPIRES 12/31/24</p>
<p>JAMBA JUICE 10209 W. 29TH STREET N WICHITA, KANSAS</p>	<p>SANITARY SEWER IMPROVEMENTS SANITARY SEWER PLAN & PROFILE</p>
<p>PROJ. NO. G23_2573</p>	<p>DESIGNER KP DRAWN BY JML</p>
<p>CFN 2573SPP</p>	<p>SHEET 02 REV 0</p>



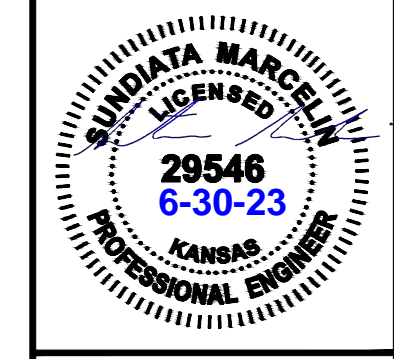
GENERAL NOTES:

1. PROPERTY LINE IS LIMITS OF CONSTRUCTION EXCEPT AS SHOWN.
2. THE CONTRACTOR SHALL INSTALL EROSION CONTROL MEASURES AS SHOWN ON THE DRAWINGS PRIOR TO BEGINNING EARTHWORK OPERATIONS.
3. THE CONTRACTOR SHALL MAINTAIN ALL SILT CONTROL MEASURES DURING CONSTRUCTION.
4. ALL SILT SHALL REMAIN ON SITE AND SURROUNDING STREETS SHALL BE KEPT CLEAR OF ALL MUD AND DEBRIS.
5. A SEDIMENTATION BARRIER IS TO BE INSTALLED AS SHOWN.
6. ACCUMULATED SEDIMENT SHALL BE REMOVED AND THE SEDIMENTATION BARRIERS MAINTAINED AS NEEDED TO PREVENT SEDIMENTATION BYPASS OF THE BARRIER.
7. SLOPES ARE TO BE LEFT IN A ROUGH CONDITION DURING GRADING.
8. CURB INLET SEDIMENTATION BARRIERS ARE TO BE INSTALLED AROUND INLETS AND WEIRS WHERE SEDIMENTATION IS A CONCERN. INLET BARRIERS SHALL BE EITHER BLOCK AND GRAVEL, OR SECURED STRAW BALES, OR SILT FENCE.
9. SEDIMENT IS TO BE REMOVED FROM STORM WATER DRAINAGE SYSTEMS.
10. RIPRAP IS TO BE INSTALLED AT AREAS OF CONCENTRATED FLOW (I.E. CULVERT OUTLETS).
11. CONTRACTOR IS RESPONSIBLE FOR INSTALLING ANY ADDITIONAL EROSION CONTROL AS HE/SHE DEEMS NECESSARY.
12. THE CONTRACTOR SHALL PROVIDE ALL MATERIALS, TOOLS, EQUIPMENT AND LABOR AS NECESSARY TO INSTALL AND MAINTAIN ADEQUATE EROSION AND SILTATION CONTROLS REQUIRED TO PREVENT SOIL EROSION FROM LEAVING THE PROJECT SITE. IT SHALL BE THE CONTRACTOR'S SOLE RESPONSIBILITY TO ENSURE THAT METHODS UTILIZED ARE ADEQUATE AND COMPLY WITH REQUIREMENTS OF THE SPECIFICATIONS AND GOVERNMENTAL AGENCIES HAVING JURISDICTION OVER THE WORK.
13. TEMPORARY SEDIMENT FENCE/STRAW BALES TO REMAIN UNTIL ADEQUATE VEGETATION IS ESTABLISHED.
14. MUD AND DEBRIS SHALL BE CLEANED UP AT THE CONCLUSION OF EACH WORKING DAY, OR AFTER EACH RAINFALL IF SILT IS PRESENT.
15. INSPECTION, MAINTENANCE AND REPAIR OF EROSION CONTROL DEVICES SHALL BE ON GOING THROUGHOUT THE LIFE OF BUILDING CONSTRUCTION TO KEEP THE DEVICES IN OPERABLE CONDITION AT ALL TIMES. ADDITIONAL MEASURES SHALL BE INSTALLED AS REQUIRED BY ACTUAL FIELD CONDITIONS AND/OR GOVERNING INSPECTION AGENCIES.
16. INSTALL CONSTRUCTION ENTRANCE AT ANY POINT WHERE TRAFFIC WILL BE ENTERING OR LEAVING THE SITE AND AS SHOWN ON PLANS.
17. AT COMPLETION OF SITE GRADING AND OTHER RELATED CONSTRUCTION ACTIVITIES, ALL DISTURBED AREAS WITHIN THE PROJECT SITE SHALL BE SEEDED USING MULCH OR EQUIVALENT STABILIZING BMP, SODDED, OR LANDSCAPED AS SHOWN ON THE LANDSCAPE PLAN WITHIN 14 DAYS.
18. TOPSOIL IS TO BE PLACED IN AREAS UNSUITABLE FOR VEGETATIVE GROWTH.
19. STRIP TOPSOIL PRIOR TO EXCAVATION, STOCKPILE AND SPREAD ONTO DISKED SUBGRADE (4" MIN) A THICKNESS OF 4 INCHES.
20. ROCK LINING (RIPRAP) SHALL BE DURABLE STONE CONTAINING A COMBINED TOTAL OF NOT MORE THAN 10 PERCENT OF EARTH, SAND, SHALE AND NON-DURABLE ROCK. AT LEAST 60 PERCENT OF THE MASS SHALL BE OF PIECES HAVING A MINIMUM WEIGHT OF 150 POUNDS OR MORE PER CUBIC FOOT.
21. THE CONTRACTOR SHALL HAVE THE RESPONSIBILITY FOR RESOLVING COMPLAINTS IN THE EVENT THAT COMPLAINTS OR DAMAGE CLAIMS ARE FILED DUE TO DAMAGES OCCURRING ADJACENT TO OR DOWNSTREAM FROM PROPERTY BY SEDIMENT RESULTING FROM EROSION ON THE PROJECT SITE.
22. GOOD HOUSEKEEPING PRACTICES SHALL BE MAINTAINED ON SITE TO KEEP SOLID WASTE FROM ENTRY INTO WATERS.
23. ALL FUELING FACILITIES PRESENT ON SITE SHALL ADHERE TO APPLICABLE FEDERAL AND STATE REQUIREMENTS CONCERNING UNDERGROUND STORAGE, ABOVE GROUND STORAGE AND DISPENSERS, INCLUDING SPILL PREVENTION, CONTROL AND COUNTER MEASURES.
24. RIGHT OF WAY TO BE STABILIZED AS REQUIRED BY APWA SECTION 2400.
25. EROSION CONTROL IS TO BE PLACED IN PHASING AS CONSTRUCTION PROGRESSES.
26. MINIMAL WASHING OF CONCRETE EQUIPMENT ALLOWED, CHUTE ETC. CONCRETE WASHOUT OF THE DRUM IS NOT ALLOWED. ANY PIT/WASHOUT AREA NEEDS TO BE MAINTAINED IN A NON-DISCHARGING MANNER AND ANY WASTE RESIDUE WILL NEED TO BE CLEANED OUT AND REMOVED AT THE END OF PROJECT.
27. CONTRACTOR/DEVELOPER IS RESPONSIBLE FOR HAVING LOT BUILDERS FOLLOW THE GUIDELINES OF "CONTROLLING EROSION WHEN BUILDING YOUR HOME" PROVIDED BY KANSAS DEPARTMENT OF HEALTH AND ENVIRONMENT.
28. EROSION CONTROL SEDIMENT FENCE TO BE INSTALLED 1'-0" BEHIND CURB & GUTTER UPON COMPLETION OF BACKFILL OF CURB IN ALL AREAS WHERE SLOPES FROM LOT DRAIN TOWARDS CURB. UPON COMPLETION OF FINAL GRADING THE TOES OF ALL EMBANKMENTS IN EXCESS OF TWO FEET IN HEIGHT WILL HAVE EROSION CONTROL SEDIMENT FENCE INSTALLED.

- DETAILS - SEE DETAIL SHEETS FOR THE FOLLOWING DETAILS
- 047 CONSTRUCTION ENTRANCE DETAIL
- 812 SEDIMENTATION FENCE



SM	CHK
JML	DWN
KP	DSN
INITIAL ISSUE	DESCRIPTION
06/30/23	REV DATE



SUNDIATA MARCELIN
ENGINEER
KS # 29546

200 N. EMPORIA, SUITE 100
WICHITA, KANSAS 67202
PH: (316) 440-4304
www.kaveg.com | www.kveing.com

KAW VALLEY ENGINEERING

KAW VALLEY ENGINEERING, INC., IS AUTHORIZED TO OFFER ENGINEERING SERVICES BY KANSAS STATE CERTIFICATE OF AUTHORIZATION # E-113. EXPIRES 12/31/24

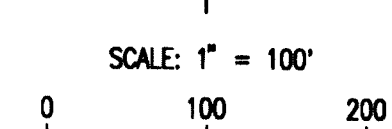
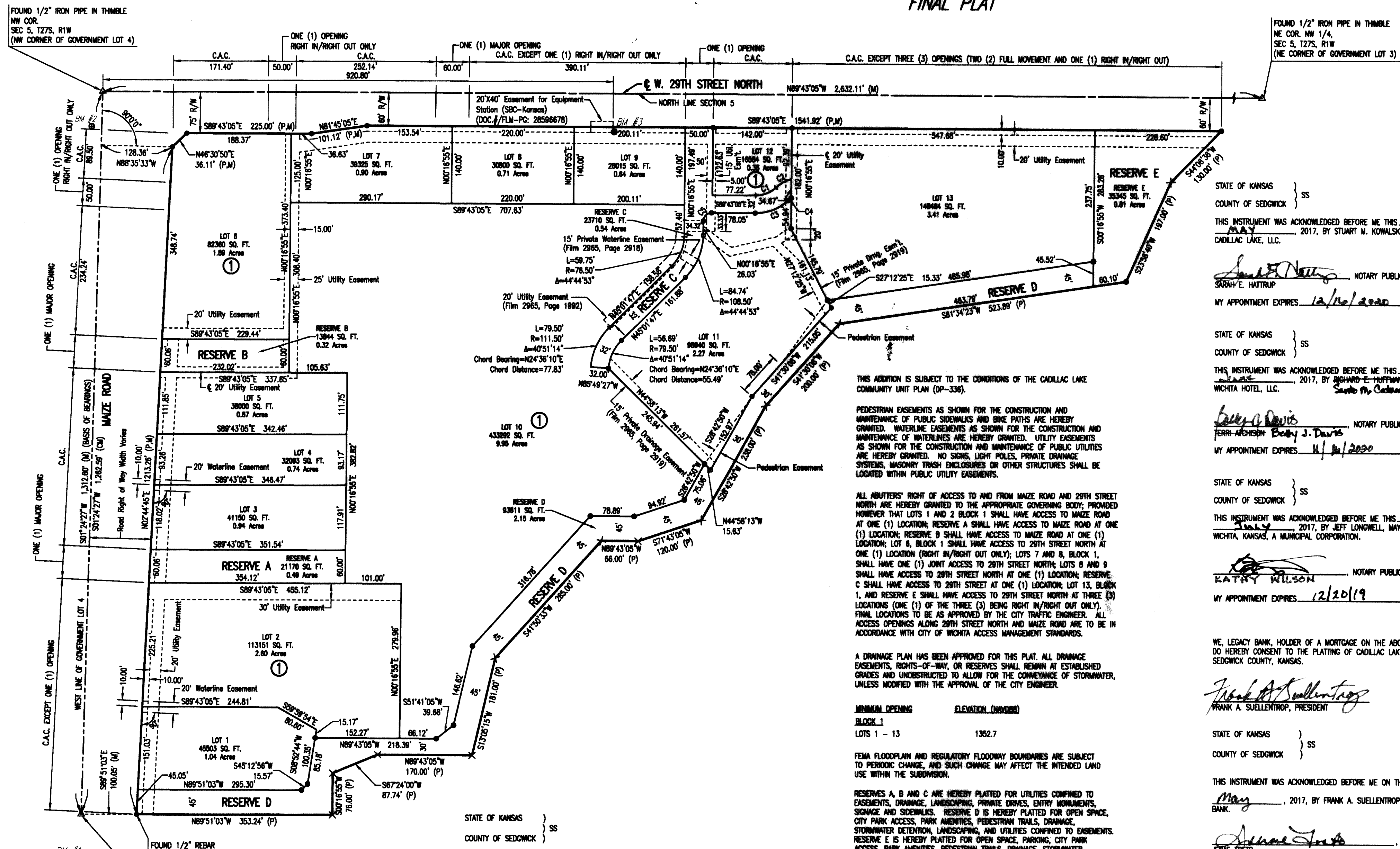
JAMBA JUCE
10209 W. 29TH STREET N
WICHITA, KANSAS

**SANITARY SEWER IMPROVEMENTS
EROSION CONTROL PLAN**

PROJ. NO. G23-2573
DESIGNER KP DRAWN BY JML
CFN
SHEET 2573SECP REV 03 0

THIS PLAN SHEET IS PART OF AN OVERALL KAW VALLEY ENGINEERING PLAN SET FOR THE SPECIFIC IMPROVEMENTS CONTEMPLATED THEREIN. AS SUCH, THE INFORMATION CONTAINED MAY BE LIMITED AND SHOULD ONLY BE INTERPRETED WITHIN THE CONTEXT OF THE COMPLETE PLAN SET.

CADILLAC LAKE 2ND ADDITION TO WICHITA, SEDGWICK COUNTY, KANSAS FINAL PLAT



- LEGEND**
- SET 1/2" REBAR, 24" LONG, W/PEC CAP
 - FOUND 1/2" REBAR W/PEC CAP
 - △ SUBMERGED IN WATER
 - × SECTION CORNER
 - M MEASURED
 - CALCULATED FROM MEASURED
 - P PLATTED MEASUREMENT FROM CADILLAC LAKE ADDITION
 - C.A.C. COMPLETE ACCESS CONTROL

- BENCH MARK LIST @ BM #3**
- BM #1 - CHISELED SQUARE ON TOP OF CURB, SOUTH SIDE OF DRIVE ENTRANCE TO NORTHEAST CORNER OF TARGET PARKING LOT AND SOUTHWEST OF SOUTHWEST CORNER OF GOVERNMENT LOT 4, SEC 5-27-1W. ELEV.=1352.44 (NAVD88)
 - BM #2 - CHISELED SQUARE AT SEASTH CORNER OF SOUTH HEADWALL FOR RCBC UNDER 29TH STREET, WEST OF MAZE ROAD (NOT THE CHISELED + AT THE SOUTHWEST CORNER OF SAME HEADWALL). ELEV. = 1353.32 (NAVD88)
 - BM #3 - CHISELED SQUARE ON TOP OF RETAINING WALL AT SOUTHEAST CORNER OF CONCRETE PAD FOR ELECTRIC TRANSFORMER #10105 ON SOUTH SIDE OF 29TH STREET AND 800 FEET EAST OF BIKE PATH ON EAST SIDE OF MAZE ROAD. ELEV. = 1352.01 (NAVD88)

THIS PLAT OF CADILLAC LAKE 2ND ADDITION HAS BEEN SUBMITTED TO AND APPROVED BY THE WICHITA-SEDGWICK COUNTY METROPOLITAN AREA PLANNING COMMISSION, WICHITA, KANSAS, APPROVED THE 9th DAY OF MARCH, 2017.

DAVID W. FOSTER, CHAIRMAN
DALE MILLER, SECRETARY

REVIEWED IN ACCORDANCE WITH K.S.A. 58-2005 ON THIS 15th DAY OF June, 2017.

TRICIA L. ROBELLO, P.S. #1246
DEPUTY COUNTY SURVEYOR
SEDGWICK COUNTY, KANSAS

THIS PLAT IS APPROVED AND ALL DEDICATIONS SHOWN HEREON ACCEPTED BY THE CITY COUNCIL OF THE CITY OF WICHITA, KANSAS, THIS 17th DAY OF July, 2017.

Jeff Kowdell, MAYOR
Karen Sublett, CITY CLERK

ENTERED ON TRANSFER RECORD August, 2017.
KELLY ARNOLD, COUNTY CLERK

THIS IS TO CERTIFY THAT THIS INSTRUMENT WAS FILED FOR RECORD IN THE REGISTER OF DEEDS OFFICE AT 12:02:05 P.M., ON THE 9th DAY OF June, 2017.

TONYA BUCKINGHAM, REGISTER OF DEEDS
JUDY J. PAGE, DEPUTY

STATE OF KANSAS } SS
COUNTY OF SEDGWICK }
THIS INSTRUMENT WAS ACKNOWLEDGED BEFORE ME THIS 23rd DAY OF May, 2017, BY STUART M. KOWALSKI, VICE PRESIDENT OF CADILLAC LAKE, LLC.

Sarah E. Hatrup, NOTARY PUBLIC
MY APPOINTMENT EXPIRES 12/16/2020

STATE OF KANSAS } SS
COUNTY OF SEDGWICK }
THIS INSTRUMENT WAS ACKNOWLEDGED BEFORE ME THIS 6th DAY OF June, 2017, BY RICHARD E. HUFFMAN, MANAGER OF HOW WICHITA HOTEL, LLC.

Richard E. Huffman, NOTARY PUBLIC
MY APPOINTMENT EXPIRES 11/11/2020

STATE OF KANSAS } SS
COUNTY OF SEDGWICK }
THIS INSTRUMENT WAS ACKNOWLEDGED BEFORE ME THIS 18th DAY OF July, 2017, BY JEFF LONGWELL, MAYOR OF THE CITY OF WICHITA, KANSAS, A MUNICIPAL CORPORATION.

Kathy Wilson, NOTARY PUBLIC
MY APPOINTMENT EXPIRES 12/20/19

WE, LEGACY BANK, HOLDER OF A MORTGAGE ON THE ABOVE DESCRIBED PROPERTY, DO HEREBY CONSENT TO THE PLATTING OF CADILLAC LAKE 2ND ADDITION TO WICHITA, SEDGWICK COUNTY, KANSAS.

Frank A. Suelletrop, PRESIDENT
STATE OF KANSAS } SS
COUNTY OF SEDGWICK }

THIS INSTRUMENT WAS ACKNOWLEDGED BEFORE ME ON THIS 26th DAY OF May, 2017, BY FRANK A. SUELLETROP, PRESIDENT OF LEGACY BANK.

Janet Treto, NOTARY PUBLIC
MY APPOINTMENT EXPIRES 12/15/18

WE, ROSE HILL BANK, HOLDER OF A MORTGAGE ON THE ABOVE DESCRIBED PROPERTY, DO HEREBY CONSENT TO THE PLATTING OF CADILLAC LAKE 2ND ADDITION TO WICHITA, SEDGWICK COUNTY, KANSAS.

Cly Mauck, PRESIDENT AND CEO
STATE OF KANSAS } SS
COUNTY OF SEDGWICK }

THIS INSTRUMENT WAS ACKNOWLEDGED BEFORE ME ON THIS 9th DAY OF June, 2017, BY CLY MAUCK, PRESIDENT AND CEO OF ROSE HILL BANK.

Stephanie E. Almazza, NOTARY PUBLIC
MY APPOINTMENT EXPIRES: 10/25/19

THIS ADDITION IS SUBJECT TO THE CONDITIONS OF THE CADILLAC LAKE COMMUNITY UNIT PLAN (CP-338).

PEDESTRIAN EASEMENTS AS SHOWN FOR THE CONSTRUCTION AND MAINTENANCE OF PUBLIC SIDEWALKS AND BIKE PATHS ARE HEREBY GRANTED. WATERLINE EASEMENTS AS SHOWN FOR THE CONSTRUCTION AND MAINTENANCE OF WATERLINES ARE HEREBY GRANTED. UTILITY EASEMENTS AS SHOWN FOR THE CONSTRUCTION AND MAINTENANCE OF PUBLIC UTILITIES ARE HEREBY GRANTED. NO SIGNS, LIGHT POLES, PRIVATE DRAINAGE SYSTEMS, WASTEWATER TREATMENT PLANTS OR OTHER STRUCTURES SHALL BE LOCATED WITHIN PUBLIC UTILITY EASEMENTS.

ALL ADJUTERS RIGHT OF ACCESS TO AND FROM MAZE ROAD AND 29TH STREET NORTH ARE HEREBY GRANTED TO THE APPROPRIATE GOVERNING BODY; PROVIDED HOWEVER THAT LOTS 1 AND 2 BLOCK 1 SHALL HAVE ACCESS TO MAZE ROAD AT ONE (1) LOCATION; RESERVE A SHALL HAVE ACCESS TO MAZE ROAD AT ONE (1) LOCATION; RESERVE B SHALL HAVE ACCESS TO MAZE ROAD AT ONE (1) LOCATION; LOT 4, BLOCK 1 SHALL HAVE ACCESS TO 29TH STREET NORTH AT ONE (1) LOCATION (RIGHT IN/RIGHT OUT ONLY); LOTS 7 AND 8, BLOCK 1, SHALL HAVE ONE (1) JOINT ACCESS TO 29TH STREET NORTH; LOTS 8 AND 9 SHALL HAVE ACCESS TO 29TH STREET NORTH AT ONE (1) LOCATION; RESERVE C SHALL HAVE ACCESS TO 29TH STREET AT ONE (1) LOCATION; LOT 13, BLOCK 1, AND RESERVE E SHALL HAVE ACCESS TO 29TH STREET NORTH AT THREE (3) LOCATIONS (ONE (1) OF THE THREE (3) BEING RIGHT IN/RIGHT OUT ONLY); FINAL LOCATIONS TO BE AS APPROVED BY THE CITY TRAFFIC ENGINEER. ALL ACCESS OPENINGS ALONG 29TH STREET NORTH AND MAZE ROAD ARE TO BE IN ACCORDANCE WITH CITY OF WICHITA ACCESS MANAGEMENT STANDARDS.

A DRAINAGE PLAN HAS BEEN APPROVED FOR THIS PLAT. ALL DRAINAGE EASEMENTS, RIGHTS-OF-WAY, OR RESERVES SHALL REMAIN AT ESTABLISHED GRADES AND UNOBSTRUCTED TO ALLOW FOR THE CONVEYANCE OF STORMWATER, UNLESS MODIFIED WITH THE APPROVAL OF THE CITY ENGINEER.

MINIMAL OPENING ELEVATION (NAVD88)

BLOCK 1	LOTS 1 - 13	1352.7
---------	-------------	--------

FEMA FLOODPLAIN AND REGULATORY FLOODWAY BOUNDARIES ARE SUBJECT TO PERIODIC CHANGE AND SUCH CHANGE MAY AFFECT THE INTENDED LAND USE WITHIN THE SUBDIVISION.

RESERVES A, B AND C ARE HEREBY PLATTED FOR UTILITIES CONFINED TO EASEMENTS, DRAINAGE, LANDSCAPING, PRIVATE DRIVES, ENTRY MONUMENTS, SIGNAGE AND SIGNCHANGES. RESERVE D IS HEREBY PLATTED FOR OPEN SPACE, CITY PARK ACCESS, PARK AMENITIES, PEDESTRIAN TRAILS, DRAINAGE, STORMWATER DETENTION, LANDSCAPING, AND UTILITIES CONFINED TO EASEMENTS. RESERVE E IS HEREBY PLATTED FOR OPEN SPACE, PARKING, CITY PARK ACCESS, PARK AMENITIES, PEDESTRIAN TRAILS, DRAINAGE, STORMWATER DETENTION, LANDSCAPING, AND UTILITIES CONFINED TO EASEMENTS. RESERVES A THROUGH D SHALL BE OWNED AND MAINTAINED BY AN OWNERS ASSOCIATION TO BE FORMED WITHIN CADILLAC LAKE 2ND ADDITION, THEIR SUCCESSORS OR ASSIGNS. RESERVE E SHALL BE OWNED AND MAINTAINED BY THE CITY OF WICHITA.

KNOW ALL MEN BY THESE PRESENTS THAT WE, THE UNDERSIGNED PROPERTY OWNERS OF THE LAND AS ABOVE SET FORTH IN THE SURVEYOR'S CERTIFICATE, HAVE CAUSED THE LAND TO BE SURVEYED AND PLATTED INTO LOTS, A BLOCK, AND RESERVES, THE SAME TO BE KNOWN AS CADILLAC LAKE 2ND ADDITION TO WICHITA, SEDGWICK COUNTY, KANSAS.

OWNER: CADILLAC LAKE, LLC
Stuart M. Kowalski, VICE PRESIDENT

OWNER: HOW WICHITA HOTEL, LLC
Richard E. Huffman, MANAGER

OWNER: CITY OF WICHITA, KANSAS, A MUNICIPAL CORPORATION
Jeff Longwell, MAYOR

WE, PROFESSIONAL ENGINEERING CONSULTANTS, P.A., ENGINEERS AND SURVEYORS IN AFORESAID STATE AND COUNTY, DO HEREBY CERTIFY ON THIS 17th DAY OF July, 2017, THAT WE HAVE SURVEYED AND PLATTED CADILLAC LAKE 2ND ADDITION TO WICHITA, SEDGWICK COUNTY, KANSAS, INTO LOTS, A BLOCK, AND RESERVES, DESCRIBED AS FOLLOWS:

LEGAL DESCRIPTION:
LOTS 1 THROUGH 9, BLOCK 1, CADILLAC LAKE, AN ADDITION TO WICHITA, SEDGWICK COUNTY, KANSAS.

ALL PUBLIC EASEMENTS LYING WITHIN ABOVE DESCRIBED TRACT OF LAND ARE HEREBY VACATED AND REPLATTED BY VIRTUE OF K.S.A. 12-512b, AS AMENDED; EXCEPT THE 20' UTILITY EASEMENT ON FILM 2965, PAGE 1992, AS SHOWN.



ERNEST CANTU, JR., P.S. NO. 1407
PROFESSIONAL ENGINEERING CONSULTANTS, P.A.

Curve Table

Curve #	Length	Radius	Delta	Chord Bearing	Chord Distance
C1	40.71'	54.50'	42°48'00"	N89°52'55"E	39.77'
C2	32.19'	89.50'	26°32'02"	N80°44'58"E	31.90'
C3	64.97'	86.50'	43°01'57"	N88°58'51"E	63.45'
C4	7.54'	37.50'	11°31'38"	N53°14'42"E	7.53'
C5	22.78'	14.50'	90°00'00"	N45°16'55"E	20.51'

THIS DRAWING SHALL NOT BE UTILIZED BY ANY PERSON, FIRM, OR CORPORATION IN WHOLE OR IN PART WITHOUT THE SPECIFIC PERMISSION OF KAW VALLEY ENGINEERING, INC.

	SMM	JML	KP	DSN	CHK
REV	DATE	DESCRIPTION			
0	06/30/23	INITIAL ISSUE			
SUNDIATA MARCELIN ENGINEER KS # 29546					
KAW VALLEY ENGINEERING KAW VALLEY ENGINEERING, INC. IS AUTHORIZED TO OFFER ENGINEERING SERVICES BY KANSAS STATE CERTIFICATE OF AUTHORIZATION # E-113. EXPIRES 12/31/24.					
PROJ. NO. <u>G23-2573</u> DESIGNER <u>KP</u> DRAWN BY <u>JML</u> CFN <u>2573SDET</u> SHEET <u>08</u> REV <u>0</u>					