

GENERAL NOTES:

1. The Contractor shall comply with all applicable safety regulations. All construction shall be completed following current City Standard Specifications and Special Provisions.

2. Contractor will be required to provide notice to utility companies a minimum of seventy-two (72) hours prior to any excavation, as follows:

Kansas One-Call 687-2470

The Contractor must notify the following in case of an emergency:

AT&T 1-800-246-8464
 Black Hills Energy 1-800-694-8889
 City of Wichita Water & Sewer 1-316-219-8921
 City of Wichita Stormwater 1-316-268-4090
 City of Wichita Traffic 1-316-268-4034
 Cox Communications 1-888-249-3530
 Kansas Gas Service 1-888-482-4950
 Westar Energy 1-800-544-4857

3. Utility service lines, poles, etc. are to be adjusted as necessary by others prior to construction unless the plans specifically call for their adjustment by the Contractor or unless the plans specifically identify a utility to be adjusted by its owner during construction. Existing utilities and their location, as shown on the plans, represent the best information obtainable for design. The Contractor will be required to work around existing utilities within the right-of-way which do not conflict with proposed construction.

4. Rubble from the removal of miscellaneous structures and excess excavation which is to be wasted shall be disposed of on sites to be provided by the Contractor. These sites shall be approved by the Engineer as to suitability, appearance and site location. Locations, in the opinion of the Engineer, that will leave an unsightly appearance will not be approved. All disposal sites must be approved by the Kansas Department of Health and Environment. Material either stockpiled or disposed of in a flood plain will require a Kansas State Board of Agriculture permit. Any material dumped in waters of the United States or wetlands is subject to U.S. Corps of Engineers permitting regulations. Any material buried or stockpiled beyond approved construction limits will require additional archaeological investigations unless buried in a previously approved borrow location.

5. Trees and shrubs in public right-of-way which are in direct conflict with proposed new construction shall be removed by the Contractor with the City Engineer's approval. Trees and shrubs which are not in direct conflict with proposed new construction shall be saved and protected from damage.

6. The Contractor shall give all property owners and/or tenants of developed property adjoining the construction of this project a minimum of ten (10) days notice prior to start of construction.

7. The Contractor shall be responsible for preserving property irons. The Contractor will be required to re-establish any property irons which are damaged or destroyed by his construction operations. Such irons shall be re-established by a licensed land surveyor in accordance with state laws.

8. The Engineering Division shall field locate water valves one time during construction when requested by the Contractor. It shall be the Contractor's responsibility to preserve such field locations during the construction process. Water valves, valve boxes or fire hydrants damaged during construction shall be repaired by Contractor at his own expense. Valve boxes and water meters within the project limits shall be adjusted to match final grades by the contractor.

9. If traffic will be impacted by construction, a traffic control plan must be submitted and approved by the City Traffic Engineer, Mike Armour at taff@cityofwichita.gov before construction can begin. The Contractor shall be responsible for all traffic control measures to facilitate construction. All construction zone markings and signage shall conform to the latest version of the Manual on Uniform Traffic Control Devices (MUTCD) as published by the US Dept. of Transportation, Federal Highway Administration. All costs associated with construction markings and signage shall be the Contractor's responsibility.

10. All elevations shown are NAVD 88.

11. All areas disturbed during construction that will not be under proposed pavement shall be restored to match existing conditions.

12. All applicable fees (tap, equity, in lieu of & main benefit) must be paid before any connections can be made on this project. Quotes can be obtained on fees by calling 316-268-4255.

13. All stubs and capped pipes shall be located with green plastic tape in the same manner as risers.

14. Connecting to Existing Manholes: Prior to laying sewer lines using existing stubs in existing manholes, the Contractor shall expose and verify the elevation, grade and alignment of existing stubs and notify the Engineer of any deviation from the plans. Where the stub is unusable due to elevation grade or alignment, the Contractor shall remove the stub and plug the hole, and reshape the existing manhole insert to provide smooth flow. Where connecting to an existing manhole that does not have an existing stub, the Contractor shall core cut into existing manhole wall to make connection using approved water stop gasket, and reshape the existing manhole insert to provide smooth flow. The cost to connecting to existing manholes is incidental to the project.

15. Contractor shall limit the extent of trench open overnight and weekends to less than 50 feet.

16. Contractor shall provide positive drainage away from all manhole covers.

17. The Contractor shall prevent any construction debris from entering the existing sanitary sewer during construction.

18. The Contractor shall be responsible for maintaining continuous flow of sewage through construction. Contractor's proposed method for maintaining sewage flow shall be submitted and approved by the Sewer Maintenance Division (316-268-4073) prior to starting and by-passing of sewage flows.

19. Any over excavation from manhole and pipe removal shall be backfilled with AB-3 compacted to 90-95% ASTM D698.

20. The Contractor shall protect from damage and support existing utilities through construction as approved by the utility owner and the Engineer at the contractor's expense.

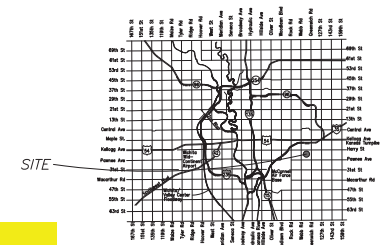
21. Contractor shall be responsible for removal of existing trees as deemed necessary to complete the project.

SANITARY SEWER TO SERVE BUENA VISTA ADDITION

CITY OF WICHITA, KANSAS
 Paul Gunzelman, P.E., Interim City Engineer
 Project Number: 468-2021-026933
 Org Code: 47265321
 Munis Number: E1117

4MC-SC
6145D

Mies Construction - Contractor
 K. Kerns - City of Wichita, Field Project Engineer
 A. Bailon - City of Wichita, Inspector
 As-built
 Stubs & Risers
 Release Date: 4/17/2024
 Completion Date:
 pdf. aprovas 5/30/2024



Vicinity Map
(For Reference Only)

INDEX OF SHEETS:

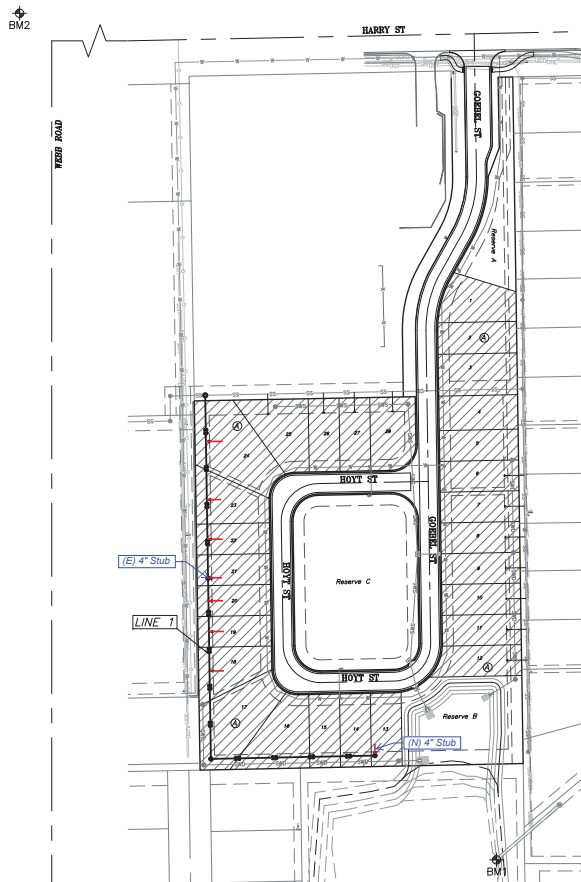
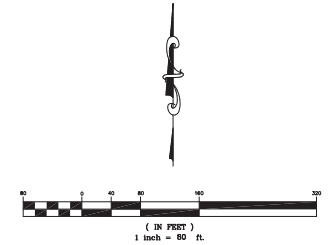
1.0	Cover Sheet
2.0	Control Map
3.0-3.1	Plan & Profile - Line 1
3.2	Vertical Riser Plan
4.0	Precast MH Detail
4.1	MH Frame & Cover Detail
4.2	Vertical Riser Assy Detail
5.0	Erosion Control Plan
5.1-5.5	Erosion Control Details
6.0	Plat

Benefit Area

BENCHMARKS:

BM1: Chiseled "□" on RCP end section, Approx. 131' south and 38' west of the SE corner of Buena Vista Addition
 Elevation = 1358.62 (NAVD 88)

BM2: C.O.W. Disc at the NW corner of Harry and Webb, Approx. 66' NW of the Section Corner
 Elevation = 1359.60 (NAVD 88).

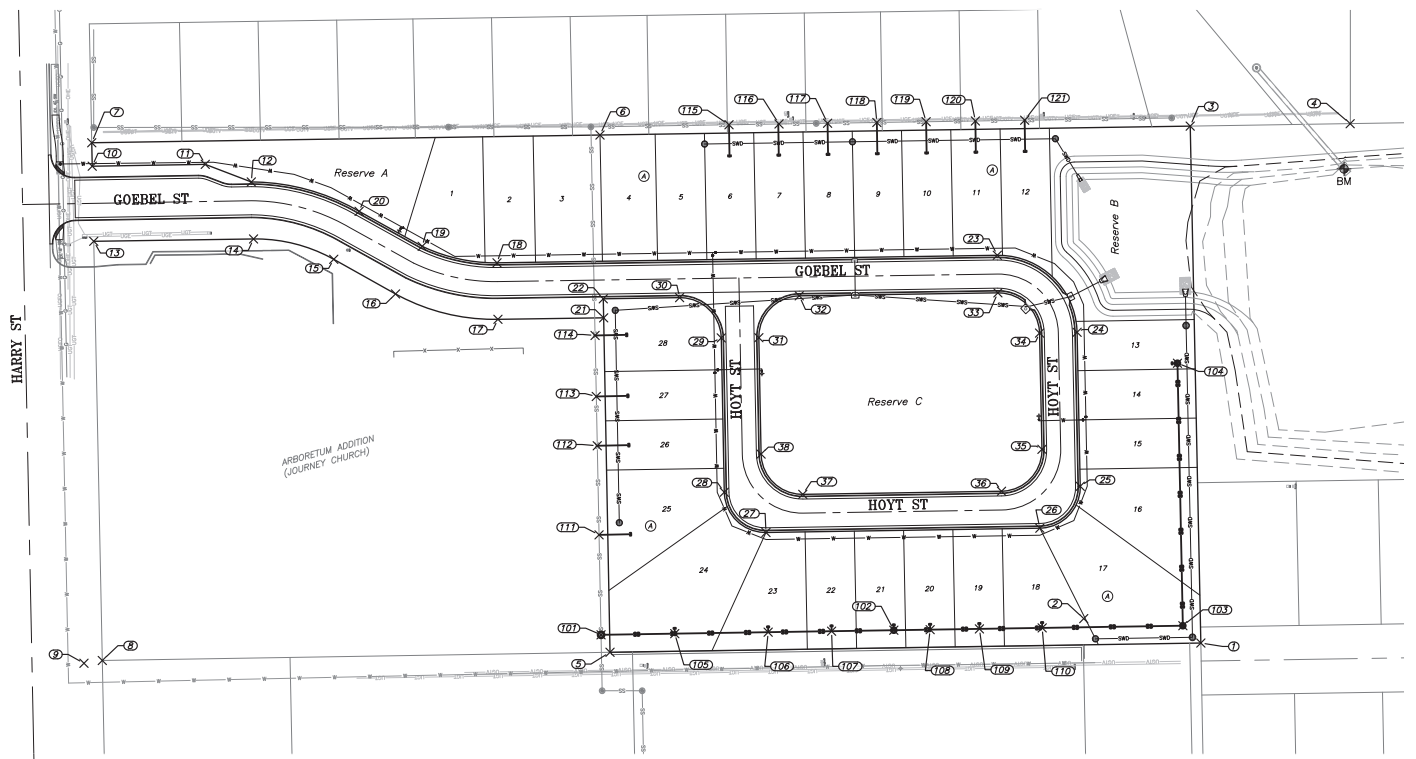


SEPTEMBER 2023

Developer:
 Miller Family Homes
 1907 S Hydraulic Ave,
 Wichita, KS 67211
 (316) 250.6227

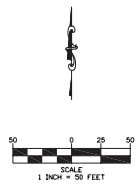


BENCHMARK:
 Chiseled "□" on top of RCP
 End Section, 131' south and
 38' west of SE Property Corner
 Elev = 1358.62



Control Points							
Point #	Raw Description	Northing	Easting	Point #	Raw Description	Northing	Easting
1	1in I.P. Baughman	1677259.08	1681943.02	20	Control	1677976.44	1682310.95
2	R4 R&B	1677358.88	1681963.82	21	Control	1677768.03	1682220.18
3	MagNail in Tree	1677268.13	1682383.58	22	Control	1677768.34	1682236.42
4	0.75in I.P.	1677131.80	1682385.64	23	Control	1677432.53	1682273.48
5	0.50in I.P.	1677762.60	1681935.15	24	Control	1677364.54	1682207.86
6	0.50in I.P.	1677771.15	1682376.01	25	Control	1677361.84	1682076.61
7	0.75in I.P.	1678204.32	1682369.39	26	Control	1677396.29	1682040.89
8	1in I.P. Baughman	1678195.31	1681928.13	27	Control	1677629.69	1682037.24
9	R4 R&B	1678210.94	1681925.76	28	Control	1677665.23	1682071.56
10	Control	1678203.91	1682349.40	29	Control	1677667.78	1682203.08
11	Control	1678107.56	1682351.00	30	Control	1677703.30	1682237.40
12	Control	1678068.30	1682335.99	31	Control	1677635.78	1682032.26
13	Control	1678202.60	1682285.42	32	Control	1677601.31	1682238.94
14	Control	1678066.42	1682287.41	33	Control	1677432.05	1682241.48
15	Control	1677998.08	1682270.09	34	Control	1677396.53	1682207.21
16	Control	1677945.40	1682240.54	35	Control	1677394.50	1682108.10
17	Control	1677858.12	1682218.93	36	Control	1677428.94	1682072.38
18	Control	1677858.92	1682267.06	37	Control	1677598.31	1682069.74
19	Control	1677922.71	1682281.11	38	Control	1677683.85	1682104.05

Sanitary Sewer Points			
Point #	Raw Description	Northing	Easting
101	0+00 SS1	1677770.25	1681950.03
102	2+49.54 SS1	1677520.74	1681953.93
103	4+95.92 SS1	1677274.39	1681957.79
104	7+19.68 SS1	1677278.98	1682181.50
105	Svc 1	1677707.43	1681951.02
106	Svc 2	1677627.81	1681952.26
107	Svc 3	1677573.75	1681953.11
108	Svc 5	1677489.76	1681954.42
109	Svc 6	1677447.76	1681955.08
110	Svc 7	1677394.29	1681955.91
111	Svc 9	1677771.95	1682035.21
112	Svc 10	1677773.47	1682111.15
113	Svc 11	1677774.31	1682153.14
114	Svc 12	1677775.35	1682205.15
115	Svc 13	1677661.19	1682384.74
116	Svc 14	1677618.56	1682385.40
117	Svc 15	1677577.20	1682386.03
118	Svc 16	1677535.20	1682386.68
119	Svc 17	1677493.21	1682387.32
120	Svc 18	1677451.21	1682387.97
121	Svc 19	1677409.22	1682388.61

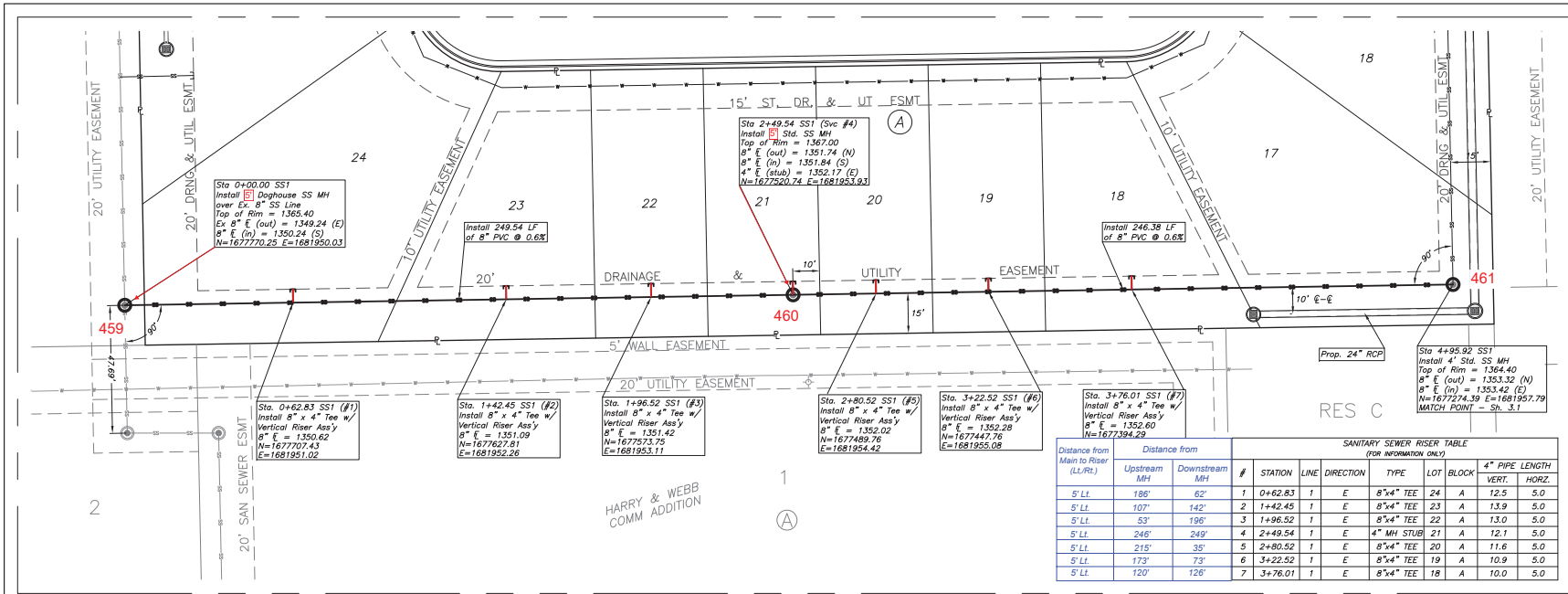


Buena Vista Addition
Control Map
 Wichita, Kansas

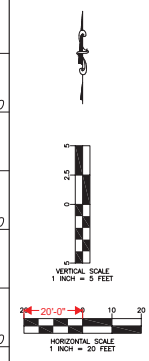
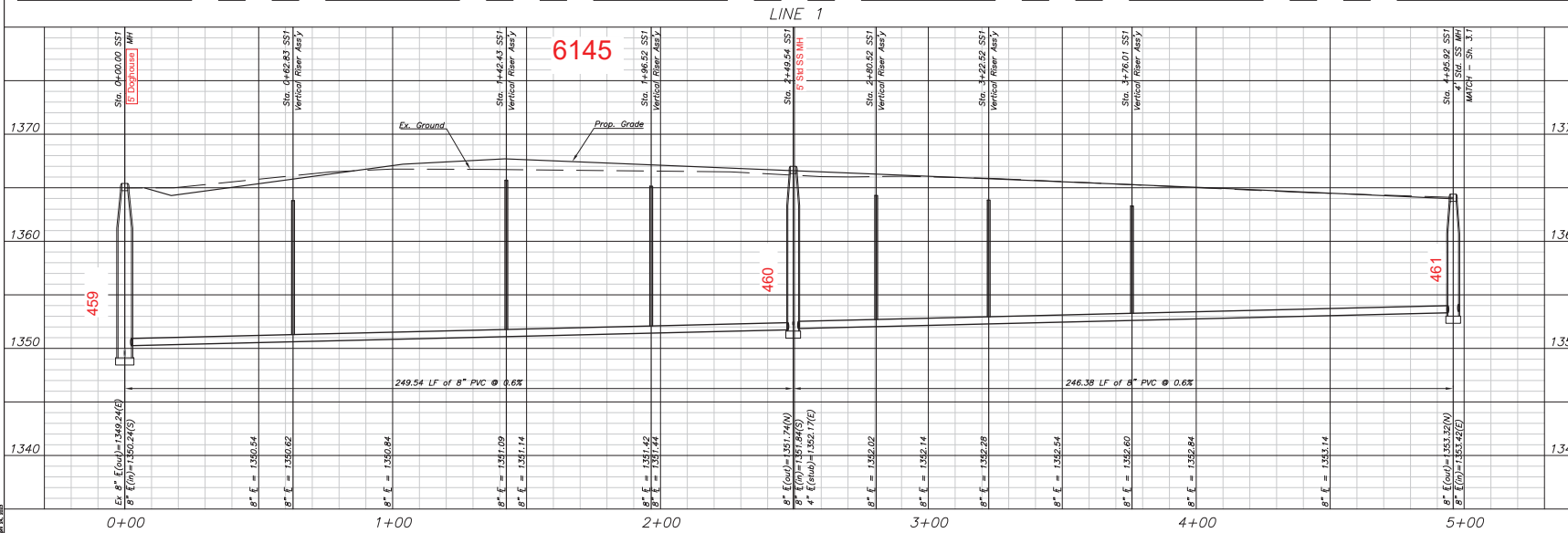
KEMILLER
 117 E. Main, Wichita, KS 67202 (316)384-0242

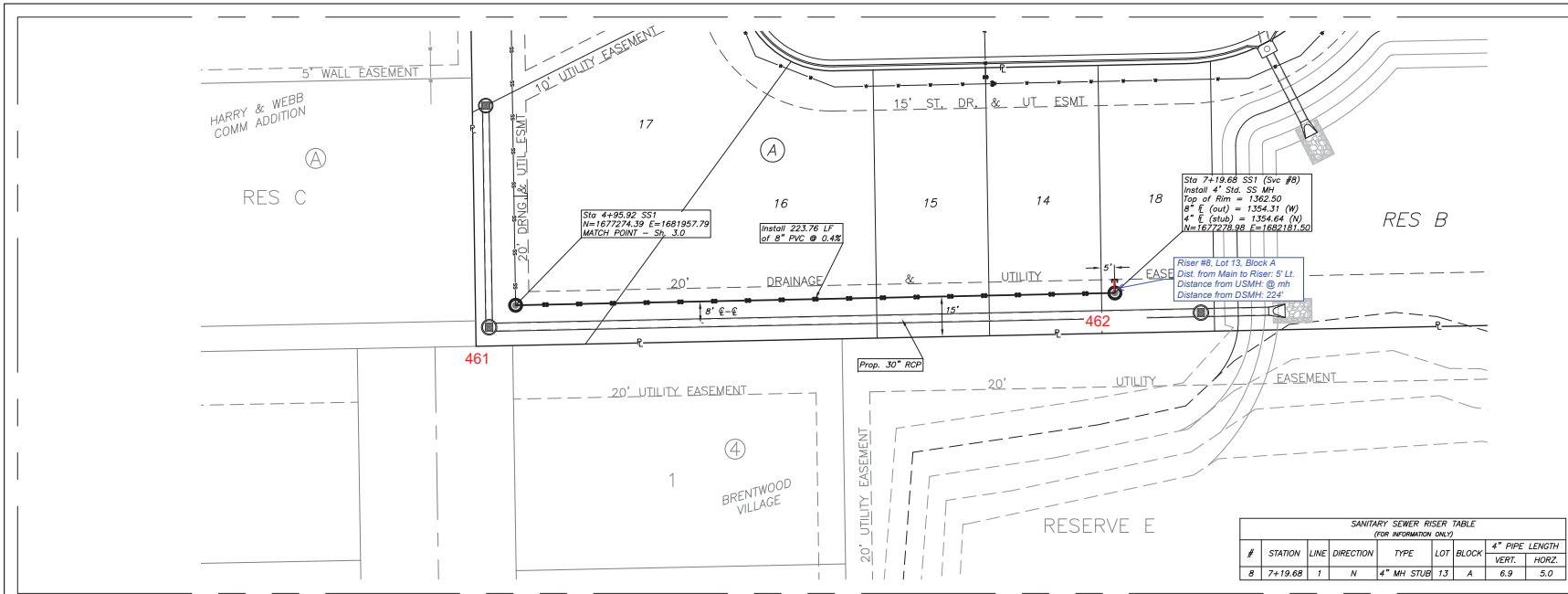
HEW PROJ: 18085	DATE 05.2023	SHEET 2.0
DESIGN HEW	DRAWN ZJS	

MA 1, 2023



SANITARY SEWER RISER TABLE (FOR INFORMATION ONLY)											
Distance from Main to Riser (L/R)	Distance from		#	STATION	LINE	DIRECTION	TYPE	LOT	BLOCK	4" PIPE LENGTH	
	Upstream MH	Downstream MH								VERT.	HORIZ.
5' LL	138'	63'	1	0+62.83	1	E	8"x4" TEE	24	A	12.5	5.0
5' LL	107'	142'	2	1+42.45	1	E	8"x4" TEE	23	A	13.9	5.0
5' LL	53'	196'	3	1+96.52	1	E	8"x4" TEE	22	A	13.0	5.0
5' LL	246'	249'	4	2+49.54	1	E	4" MH STUB	21	A	12.1	5.0
5' LL	215'	35'	5	2+80.52	1	E	8"x4" TEE	20	A	11.6	5.0
5' LL	173'	73'	6	3+22.52	1	E	8"x4" TEE	19	A	10.9	5.0
5' LL	120'	126'	7	3+76.01	1	E	8"x4" TEE	18	A	10.0	5.0

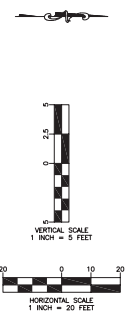
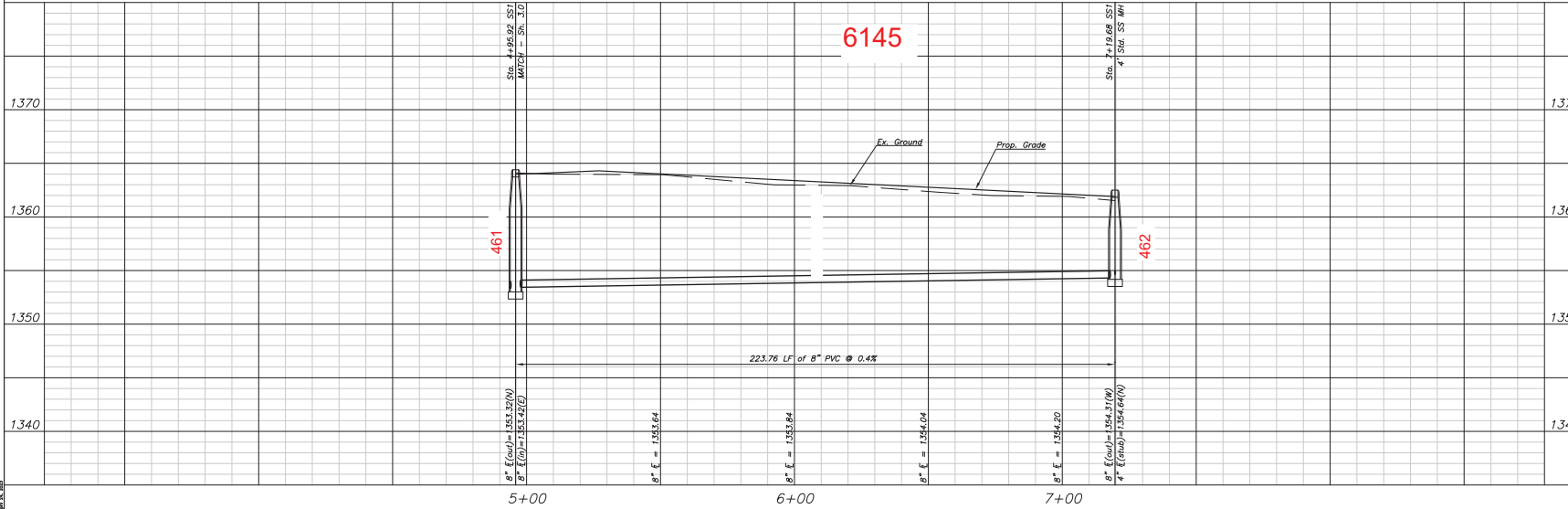




SANITARY SEWER RISER TABLE
(FOR INFORMATION ONLY)

#	STATION	LINE	DIRECTION	TYPE	LOT	BLOCK	4" PIPE LENGTH	
							VERT.	HORZ.
8	7+19.68	1	N	4" MH STUB	13	A	6.9	5.0

LINE 1



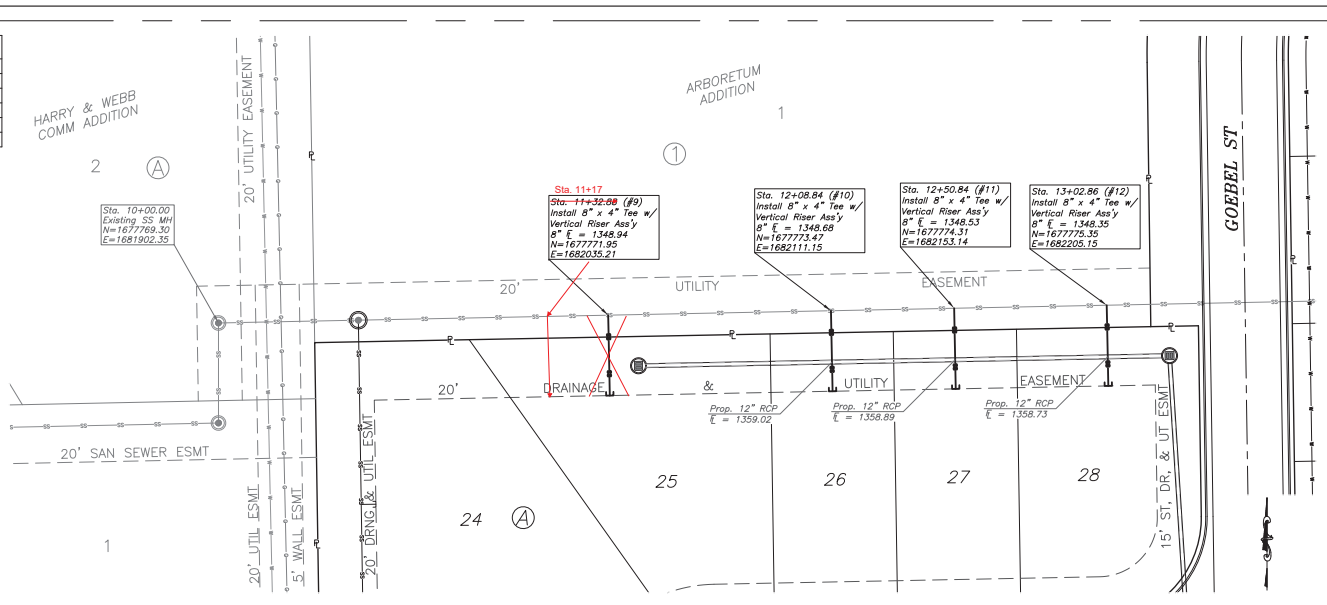
Buena Vista Addition
SS1 Plan & Profile
Wichita, Kansas

KEMILLER
117 E. Leola, Wichita, KS 67202 (316)364-0242

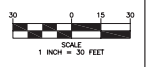
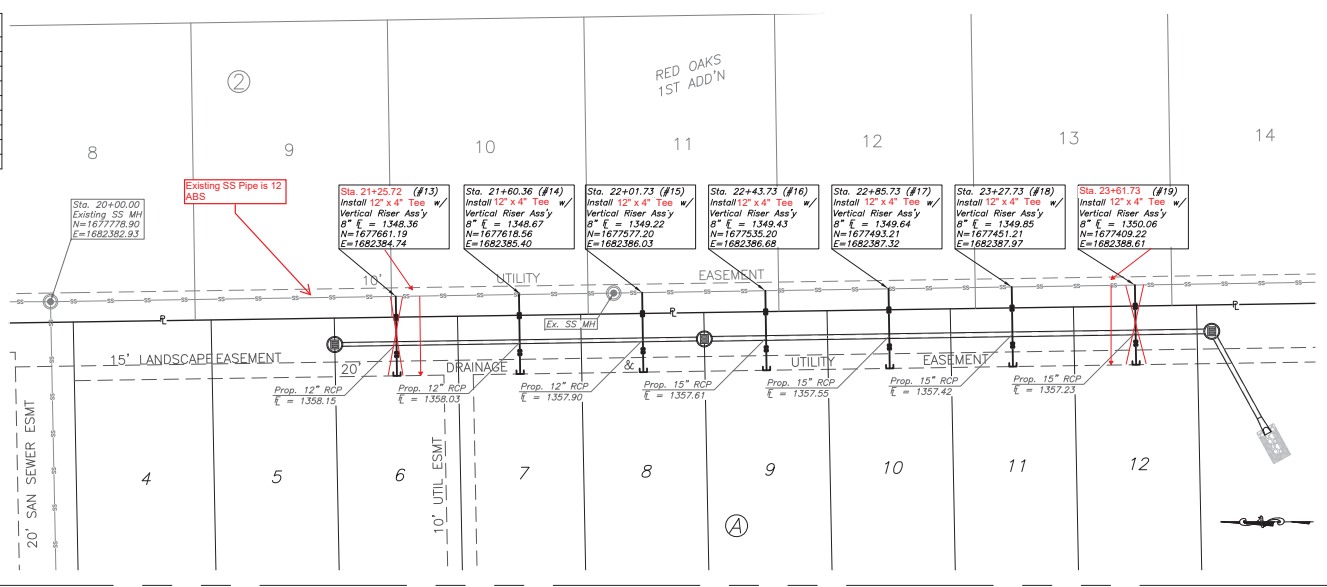
DEM PROJ. 18085	DATE 05.2023	SHEET 3.1
DESIGN KEM	DRAWN ZJS	

ME 15.18.2023

SANITARY SEWER RISER TABLE (FOR INFORMATION ONLY)								
#	STATION	LINE	DIRECTION	TYPE	LOT	BLOCK	VERT.	HORZ.
9	11+32.88	Ex.	S	8" x 4" TEE	25	A	11.9	27.4
10	12+08.84	Ex.	S	8" x 4" TEE	26	A	12.2	27.5
11	12+50.84	Ex.	S	8" x 4" TEE	27	A	11.9	27.5
12	13+02.86	Ex.	S	8" x 4" TEE	28	A	11.3	27.5



SANITARY SEWER RISER TABLE (FOR INFORMATION ONLY)								
#	STATION	LINE	DIRECTION	TYPE	LOT	BLOCK	VERT.	HORZ.
13	21+17.72	Ex.	W	12" x 4" TEE	25	A	9.7	27.1
14	21+60.36	Ex.	W	12" x 4" TEE	26	A	9.4	27.1
15	22+01.73	Ex.	W	12" x 4" TEE	27	A	8.8	27.1
16	22+43.73	Ex.	W	12" x 4" TEE	28	A	8.6	27.1
17	22+85.73	Ex.	W	12" x 4" TEE	20	A	8.6	27.1
18	23+27.73	Ex.	W	12" x 4" TEE	19	A	8.0	27.1
19	23+69.73	Ex.	W	12" x 4" TEE	18	A	7.3	27.2



REVISION

Buena Vista Addition
Vertical Riser Plan
Wichita, Kansas

KEMILLER
117 E. Linn, Wichita, KS 67202 (316)364-0242

REV. PROJ.	DATE	SHEET
18085	05.2023	4.0
DESIGN	DRAWN	
KEM	ZJS	