

GENERAL NOTES:

- Contractor will be required to provide notice to utility companies a minimum of seventy-two (72) hours prior to any excavation, as follows:
 Kansas One-Call 687-2470
 The Contractor must notify the following in case of an emergency:
 Cox Communications 262-4270
 Kansas Gas Service 1-888-492-4950
 Energy 383-8650
 AT&T 268-2245
 City of Wichita Water Dept. 268-4563
 City of Wichita Sewer Maint. 268-4034
 City of Wichita Storm Sewer Maint. 268-4090
 City of Wichita Traffic Maint. 268-4034
- Utility service lines, poles, valve boxes, meters, and electrical are to be adjusted as necessary by others prior to construction unless the plans specifically call for their adjustment by the Contractor or unless the plans specifically identify a utility to be adjusted by its owner during construction. Existing utilities and their location, as shown on the plans, represent the best information obtainable for design. The Contractor will be required to work around existing utilities within the right-of-way which do not conflict with proposed construction.
- Rubble from the removal of miscellaneous structures and excess excavation which is to be wasted shall be disposed of on sites to be provided by the Contractor. These sites shall be approved by the Engineer as to suitability, appearance and site location. Locations, in the opinion of the Engineer, that will leave an unsightly appearance will not be approved. All disposal sites must be approved by the Kansas Department of Health and Environment. Material either stockpiled or disposed of in a flood plain would require a Kansas State Board of Agriculture permit. Any material dumped in waters of the United States or Wetlands is subject to U.S. Corps of Engineers permitting regulations. Any material buried or stockpiled beyond approved construction limits would require additional archeological investigations unless buried in a previously approved borrow location.
- Trees and shrubs in public right-of-way which are in direct conflict with proposed new construction shall be removed by the Contractor with the Engineer's approval. Trees and shrubs which are not in direct conflict with proposed new construction shall be saved and protected from damage.
- The Contractor shall give all property owners and/or tenants of developed property abutting the construction of this project a minimum of ten (10) days notice prior to start of construction.
- The Contractor shall be responsible for preserving property irons. The Contractor will be required to re-establish any property irons which are damaged or destroyed by his construction operations. Such irons shall be re-established by a licensed land surveyor in accordance with state law.
- All existing and proposed erosion control measures including silt fences, erosion control mat, straw bales, inlet barriers, and const. entrance shall be maintained throughout construction by the contractor and until project is accepted by the City of Wichita. The on-site engineer shall complete weekly reports on the status of erosion control measures. The contractor shall be required to comply with maintenance and/or replacement of erosion control measures as determined by the on-site engineer until project is accepted by City of Wichita. Maintenance and/or replacement of erosion control measures to be paid by L.S. bid item "Maintain Existing BMP's."

BENCHMARKS

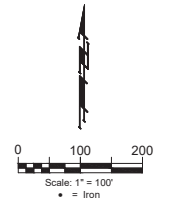
BENCHMARK #1:
 CROSS CUT IN SQUARE CUT, TOP OF CURB AT WEST END OF CURB RETURN, NORTHWEST CORNER OF SIEFFORD AND W 30TH ST S, 14.9' SOUTH & 3.0' WEST OF THE SOUTHWEST CORNER OF LOT 1, BLOCK D, HARVEST RIDGE ADDITION. (ELEV = 1336.39 (NA1088))

BENCHMARK #2:
 CROSS CUT IN SQUARE CUT ON TOP FROM CENTER OF CATCH BASIN, WEST SIDE OF HARVEST RD, 4.4' NORTH & 12.4' EAST OF SOUTHWEST CORNER OF LOT 2, BLOCK C, HARVEST RIDGE ADDITION. (ELEVATION = 1335.39 (NA1088))

SANITARY SEWER IMPROVEMENTS to serve **SKYWAY WEST 6TH ADDITION** CITY OF WICHITA, KANSAS

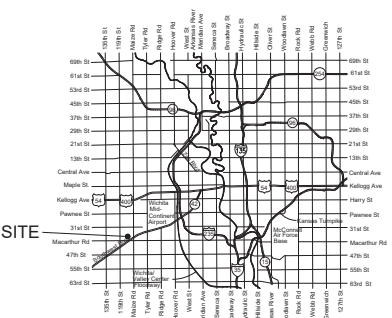
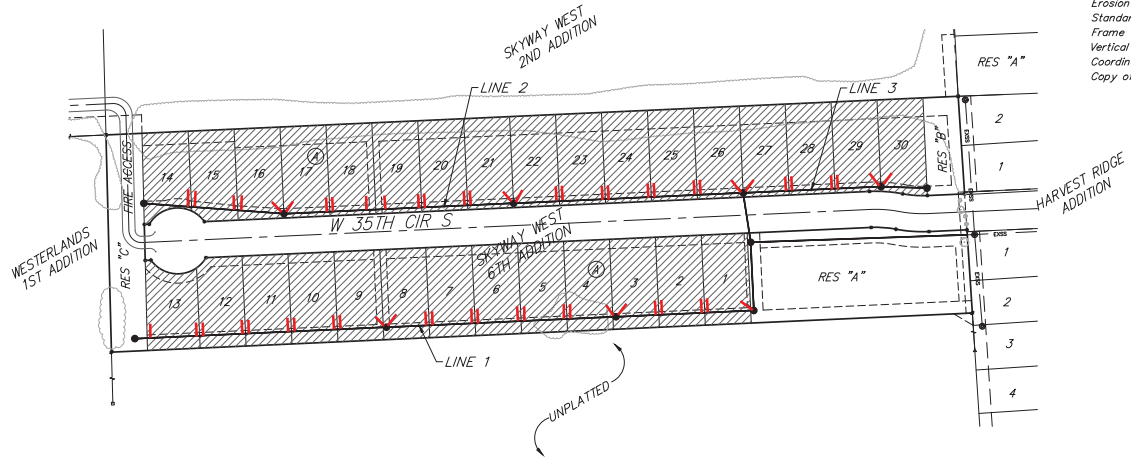
Paul Gunzelman, P.E. City Engineer
 Project Number: 468-2023-007275
 Org Code Number: 47269023
 Munis Number: E3099

Mies Construction - Contractor
 S. Lowe - City of Wichita, Field Project Engineer
 D. Swinger - City of Wichita, Inspector
 As-built
 Stubs & Risers
 Release Date: 7/24/2024
 Completion date:
 pdf: apr 7/25/2024



SHEET INDEX

Sheet	Description
1	Title Sheet
2-4	Line 1
5-7	Line 2
8	Line 3
9	Erosion Control Plan
10-14	Erosion Control BMP Details
15	Standard Manhole Detail
16	Frame & Cover Detail
17	Vertical Riser Detail
18	Coordinate Sheet
19	Copy of Plat



VICINITY MAP

BENEFIT DISTRICT



July 27, 2023

BAUGHMAN COMPANY
 315 Ellis St. Wichita, KS 67211 316-262-7271
 BaughmanCo.com

E:\Projects\SS\West EB_22_02_P77BE\Drawings\Phase 1\SS\SS.dwg



Construction Engineering Division
 1801 S. McLean Blvd., Suite B
 Wichita KS, 67213
 (316) 268-4027

Sanitary Sewer Riser Table

Project Name: WDS SWD #511 SS Impr W 35th Circle S to serve Skyway West 6th Addn
Project Location: north of MacArthur Rd. east of 119th St W
Project No: 468-2023-007275
MUNIS No: E3099/47269023
Contractor: Mies Construction, Inc.
Inspector: Daniel Swinger

Riser No.	Line No.	Station	Distance from Main to Riser (Lt./Rt.)	Distance from		Comment
				Upstream MH	Downstream MH	
1	1	04+70.70	9.3 Rt.	210.4	10.6	MH Stub
2	1	05+44.70	7.5 Rt.	149.9	71.1	
3	1	05+54.70	6.4 Rt.	139.5	81.5	
4	1	06+18.70	6 Rt.	72.7	148.3	
5	1	06+28.70	5.6 Rt.	63.3	157.7	
6	1	06+92.70	5.7 Rt.	4.0	217.0	MH Stub
7	1	06+92.70	5.7 Rt.	364.9	4.8	MH Stub
8	1	07+66.70	5.9 Rt.	297.7	72	
9	1	07+76.70	5.4 Rt.	287.0	82.7	
10	1	08+40.70	5.2 Rt.	222.7	147	
11	1	08+50.70	5.3 Rt.	212.9	156.8	
12	1	09+14.70	5.4 Rt.	149.5	220.2	
13	1	09+24.70	5.6 Rt.	139.5	230.2	
14	1	09+88.70	5.7 Rt.	73.5	296.2	
15	1	09+98.70	5.5 Rt.	63.8	305.9	
16	1	10+62.70	5.4 Rt.	4.5	365.2	MH Stub
17	1	10+62.70	15.2 Rt.	386.1	13.5	MH Stub
18	1	11+36.70	5.5 Rt.	329.3	70.3	
19	1	11+46.70	5.6 Rt.	319.0	80.6	
20	1	12+10.70	5.4 Rt.	254.8	144.8	
21	1	12+20.70	5.6 Rt.	243.6	156	
22	1	12+84.80	5.3 Rt.	181.2	218.4	
23	1	12+94.70	5.5 Rt.	172.0	227.6	
24	1	13+58.70	6.2 Rt.	106.7	292.9	
25	1	13+68.70	5.7 Rt.	96.4	303.4	
26	1	14+43.10	6.5 Rt.	24.5	375.1	
27	2	00+80.50	8.5 Lt.	208.6	8.2	MH Stub
28	2	00+80.50	7.4 Rt.	345.9	7.2	MH Stub
29	2	01+49.50	8.5 Rt.	287.1	66	
30	2	01+59.50	8.3 Rt.	277.3	75.8	
31	2	02+97.50	8.2 Rt.	214.9	138.2	
32	2	02+33.50	7.2 Rt.	205.9	147.2	
33	2	02+97.50	7.6 Rt.	145.7	207.4	
34	2	03+07.50	7.9 Rt.	136.3	216.8	
35	2	03+71.50	7.9 Rt.	76.7	276.4	
36	2	03+81.50	8.3 Rt.	66.9	286.2	
37	2	04+50.50	8.3 Rt.	7.5	345.6	MH Stub
38	2	04+50.50	8.0 Rt.	344.9	7.2	MH Stub

BENCHMARK #1:
CROSS CUT IN SQUARE CUT, TOP OF CURB AT WEST END OF CURB RETURN, NORTHWEST CORNER OF SHEFFORD AND W 35TH ST S, 14.5' SOUTH & 5.0' WEST OF THE SOUTHEAST CORNER OF LOT 1, BLOCK B, HARVEST RIDGE ADDITION. ELEV. = 1338.39 (NA1988)

BENCHMARK #2:
CROSS CUT IN SQUARE CUT ON TOP FRONT CENTER OF CURB BASIN, WEST SIDE OF HOLLYWOOD, 4.6' NORTH & 12.8' EAST OF SOUTHEAST CORNER OF LOT 2, BLOCK C, HARVEST RIDGE ADDITION. ELEVATION = 1335.39 (NA1988)

Remove & Replace Wood Fence as Necessary for Construction, Cost to Be Included in "Site Clearing"

CAUTION!
Existing Underground Every, Cox, & ATT Crossing, Depth Unknown.

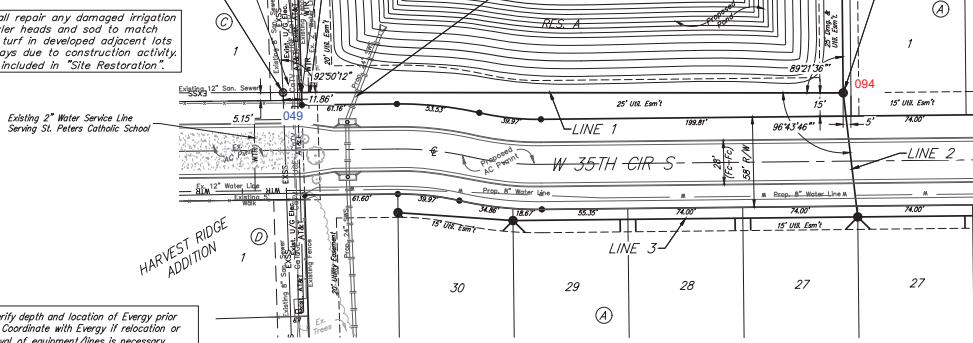
Sta. 0+12.0, Line 1 Connect to Existing 12" Pipe Stub & Extend 12" Pipe (W). Depth, Location & Alignment Unknown. Contractor to Verify Extension of Sanitary Sewer Falls Within Utility Easement.

Proposed 24" SWS Crossing

POND DATA:
100-YR ELEV. = 1336.6
STATIC ELEV. = 1332.0
BOTTOM ELEV. = 1329.0

Sta. 3+60.7, Line 1 Const. Std. Outside Drop Manhole (5' Dia.) (N) Top Elev. = 1340.50 Match Point

Contractor shall repair any damaged irrigation lines or sprinkler heads and sod to match any disturbed turf in developed adjacent lots or right-of-ways due to construction activity. Cost shall be included in "Site Restoration".

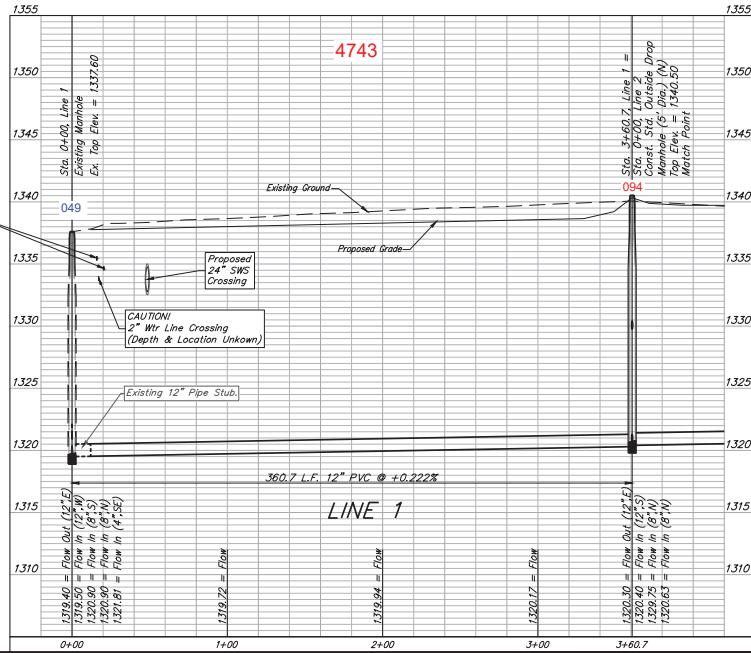


Contractor to verify depth and location of Every prior to construction. Coordinate with Every if relocation or temporary removal of equipment/lines is necessary. Contact Heidi Bryan (316-261-6354) a minimum of three weeks prior to construction.

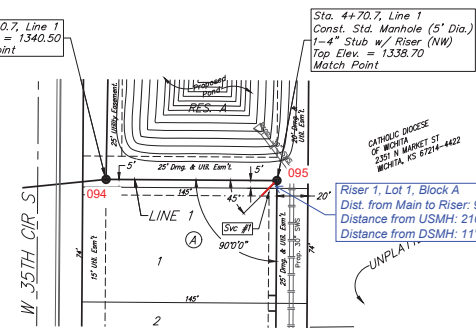
Contractor to verify depth and location of AT&T prior to construction. Coordinate with AT&T if relocation or temporary removal of equipment/lines is necessary. Contact Shannon Brinkmeyer (316-268-2931) a minimum of three weeks prior to construction.

Contractor to verify depth and location of Cox prior to construction. Coordinate with Cox if relocation or temporary removal of equipment/lines is necessary. Contact Ace Cruz (316-249-4494) a minimum of three weeks prior to construction.

CAUTION!
Existing Underground Every, Cox, & ATT Crossing, Depth Unknown.



Sta. 3+60.7, Line 1 Top Elev. = 1340.50 Match Point



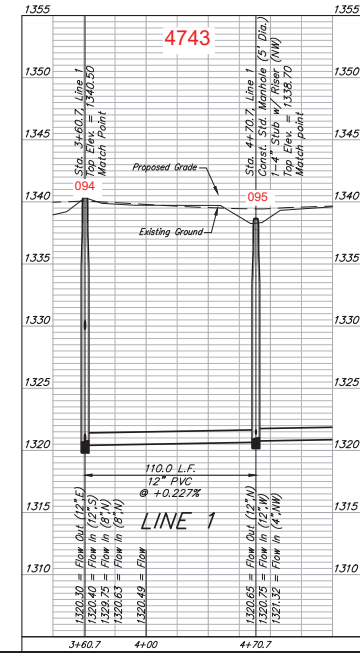
Sta. 4+70.7, Line 1 Const. Std. Manhole (5' Dia.) 1-4" Stub w/ Riser (NW) Top Elev. = 1338.70 Match Point

Riser 1, Lot 1, Block A
Dist. from Main to Riser: 9' Rt.
Distance from DSMH: 21'

SEWER SERVICE TABLE

NUMBER	TYPE	LOCATION			FOR INFORMATION ONLY		
		LOT NO.	BLOCK NO.	LINE NO.	STATION/DIRECTION	APPROX. LENGTH 4" PIPE	
						VERTICAL	HORIZONTAL
1	4" Stub	1	A	1	4+70.70/RL	12.7	14.1

NOTE: Vertical Riser Pipe shall be extended to 2" minimum above ground water elevation and 4" maximum below proposed ground elevation.



BAUGHMAN COMPANY
315 Ellis St.
Wichita, KS 67211
316-262-7271
BaughmanCo.com

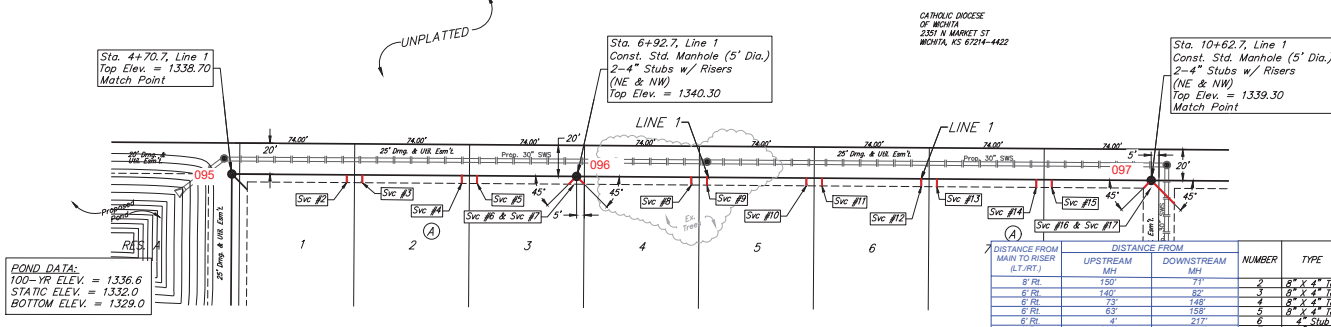
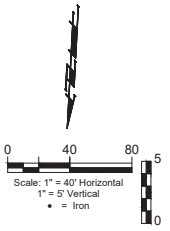
SKYWAY WEST 6TH ADDITION

LINE 1

SANITARY SEWER IMPROVEMENTS
PROJECT NUMBER: 468-2023-007275
DATE: July 27, 2023
SHEET 02 OF 19

BENCHMARK #1:
CROSS CUT IN SQUARE CUT, TOP OF CURB AT WEST END OF CURB RETURN, NORTHWEST CORNER OF SHEFFORD AND IN 35TH ST S, 14.5' SOUTH & 5.0' WEST OF THE SOUTHWEST CORNER OF LOT 1, BLOCK C, HARVEST RIDGE ADDITION. ELEV. = 1336.39 (NA1088)

BENCHMARK #2:
CROSS CUT IN SQUARE CUT ON TOP FRONT CENTER OF CATCH BASIN, WEST SIDE OF HOLLYWOOD, 4.6' NORTH & 12.8' EAST OF SOUTHWEST CORNER OF LOT 2, BLOCK C, HARVEST RIDGE ADDITION. ELEVATION = 1335.39 (NA1088)



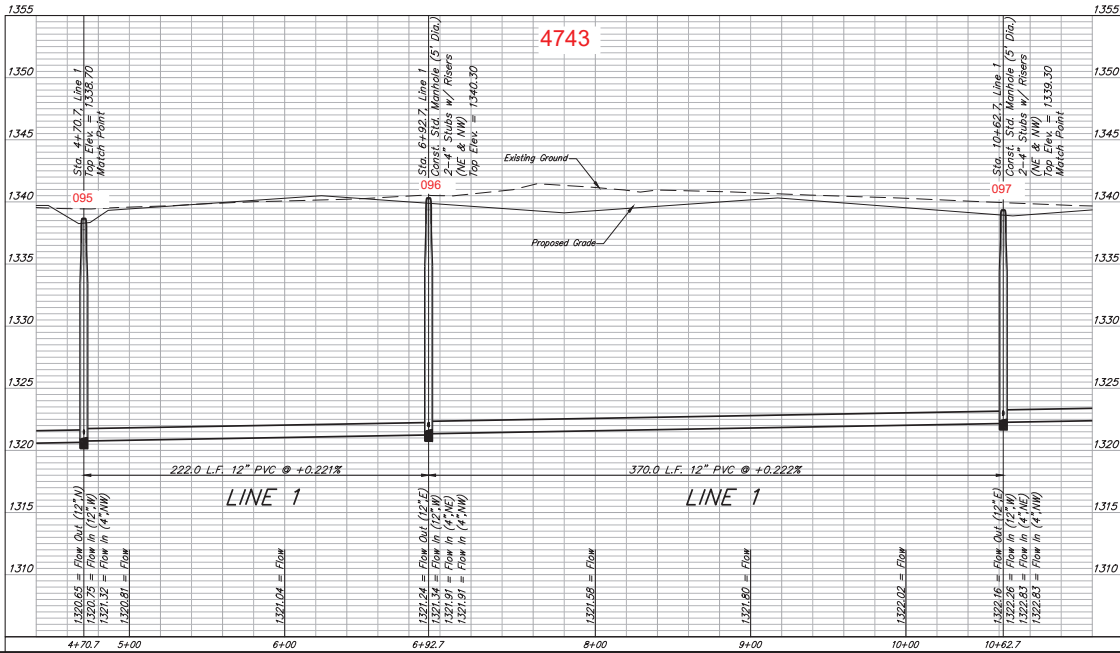
POND DATA:
100-YR ELEV. = 1336.6
STATIC ELEV. = 1332.0
BOTTOM ELEV. = 1329.0

CATHOLIC DIOCESE
OF WICHITA
235 W MARKET ST
WICHITA, KS 67214-4422

SEWER SERVICE TABLE

DISTANCE FROM MAIN TO RISER (L.T./R.T.)	DISTANCE FROM		NUMBER	TYPE	LOCATION			FOR INFORMATION ONLY
	UPSTREAM (FEET)	DOWNSTREAM (FEET)			LOT NO.	BLOCK NO.	LINE NO.	
8' RL	150'	71'	2	8\"/>				
8' RL	140'	82'	3	8\"/>				
8' RL	78'	168'	4	8\"/>				
8' RL	63'	158'	5	8\"/>				
8' RL	4'	217'	6	4\"/>				
8' RL	385'	5'	7	4\"/>				
8' RL	288'	63'	8	4\"/>				
8' RL	227'	87'	9	4\"/>				
8' RL	223'	147'	10	8\"/>				
8' RL	211'	157'	11	8\"/>				
8' RL	150'	220'	12	8\"/>				
8' RL	140'	200'	13	8\"/>				
8' RL	74'	286'	14	4\"/>				
8' RL	64'	306'	15	8\"/>				
8' RL	5'	365'	16	4\"/>				
15' RL	386'	14'	17	4\"/>				

NOTE: Vertical Riser Pipe shall be extended to 2' minimum above ground water elevation and 4' maximum below proposed ground elevation.



Existing trees which are in direct conflict with proposed new construction shall be removed by the Contractor ONLY with approval of the Engineer. Trees not in direct conflict with proposed new construction shall remain and be protected from damage. Cost shall be included in bid item "Site Clearing"

BAUGHMAN COMPANY
 315 Ellis St.
 Wichita, KS 67211
 316-262-7271
 BaughmanCo.com

SKYWAY WEST
 6TH ADDITION
LINE 1

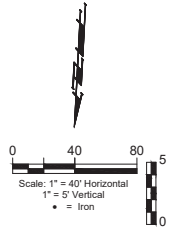
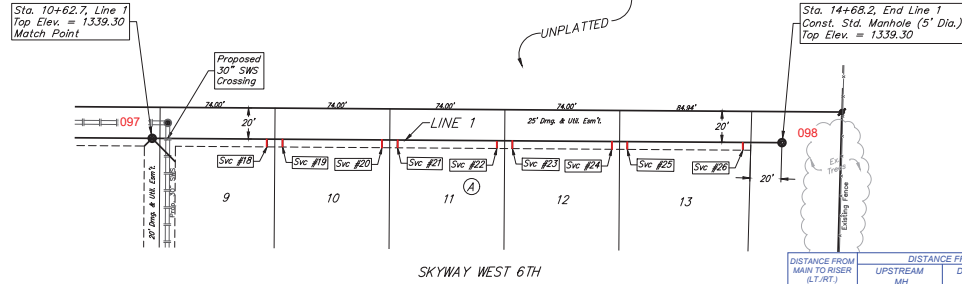
SANITARY SEWER
 IMPROVEMENTS
 PROJECT NUMBER:
 468-2023-007275
 DESIGN: CDW DRAWN: CDW
 DATE: July 27, 2023
 SHEET OF
03 19

File: E:\Projects\Skyway West\Emp_22-05-27\BEG\Engineering\Phase 1\SSS\B.dwg

BENCHMARK #1:
CROSS CUT IN SQUARE CUT, TOP OF CURB AT WEST END OF CURB RETURN, NORTHWEST CORNER OF SHEFFORD AND 35TH ST S, 14.5' SOUTH & 5.0' WEST OF THE SOUTHEAST CORNER OF LOT 1, BLOCK B, HARVEST RIDGE ADDITION. ELEV. = 1336.39 (NA1608)

BENCHMARK #2:
CROSS CUT IN SQUARE CUT ON TOP FRONT CENTER OF CATON BASIN, WEST SIDE OF HOLLYWOOD, 4.6' NORTH & 12.8' EAST OF SOUTHWEST CORNER OF LOT 2, BLOCK C, HARVEST RIDGE ADDITION. ELEVATION = 1335.39 (NA1608)

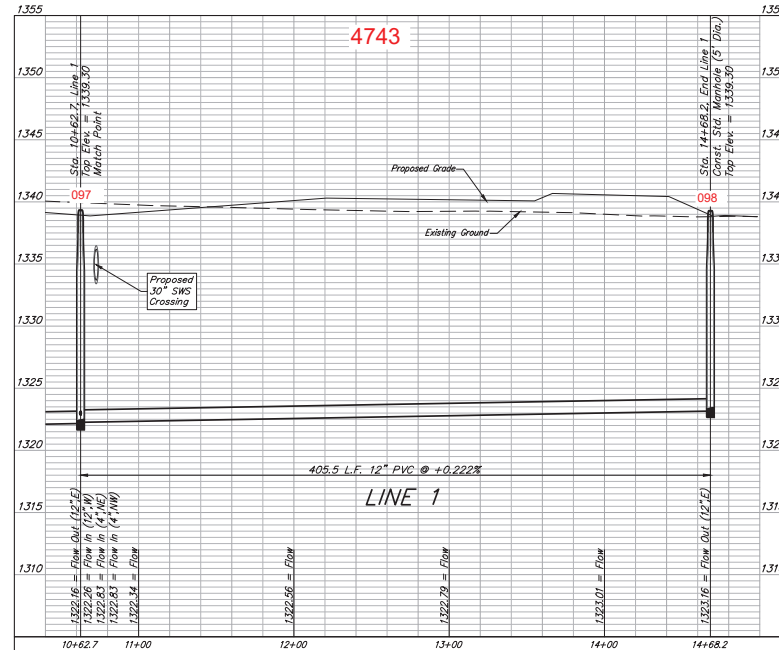
CATHOLIC DIOCESE OF WICHITA
2351 N MARKET ST
WICHITA, KS 67214-4422



SEWER SERVICE TABLE

DISTANCE FROM MAIN TO RISER (L./RT.)	DISTANCE FROM		NUMBER	TYPE	LOCATION			FOR INFORMATION ONLY		
	UPSTREAM MH	DOWNSTREAM MH			LOT NO.	BLOCK NO.	LINE NO.	STATION/DIRECTION	APPROX. LENGTH * PIPE	HORIZONTAL
6' Rt.	329'	70'	18	8" X 4" Tee	9	A	I	11+36.70/RT.	18.4	6' -5.0"
6' Rt.	319'	61'	19	8" X 4" Tee	9	A	I	11+46.70/RT.	19.5	6' -5.0"
6' Rt.	335'	145'	20	8" X 4" Tee	10	A	I	12+10.70/RT.	19.7	6' -5.0"
6' Rt.	244'	156'	21	8" X 4" Tee	11	A	I	12+20.70/RT.	19.8	6' -5.0"
6' Rt.	331'	216'	22	8" X 4" Tee	12	A	I	12+52.70/RT.	19.9	6' -5.0"
6' Rt.	172'	228'	23	8" X 4" Tee	12	A	I	12+94.70/RT.	19.5	6' -5.0"
6' Rt.	107'	290'	24	8" X 4" Tee	12	A	I	13+52.70/RT.	19.5	6' -5.0"
6' Rt.	86'	303'	25	8" X 4" Tee	13	A	I	13+68.70/RT.	19.4	6' -5.0"
7' Rt.	25'	375'	26	8" X 4" Tee	13	A	I	14+43.10/RT.	12.2	1' -3.0"

NOTE: Vertical Riser Pipe shall be extended to 2' minimum above ground water elevation and 4' maximum below proposed ground elevation.



BAUGHMAN COMPANY
315 Ellis St.
Wichita, KS 67211
316-262-7271
BaughmanCo.com

SKYWAY WEST 6TH ADDITION

LINE 1

SANITARY SEWER IMPROVEMENTS
PROJECT NUMBER:
468-2023-007275

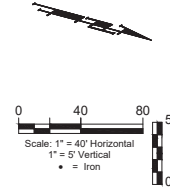
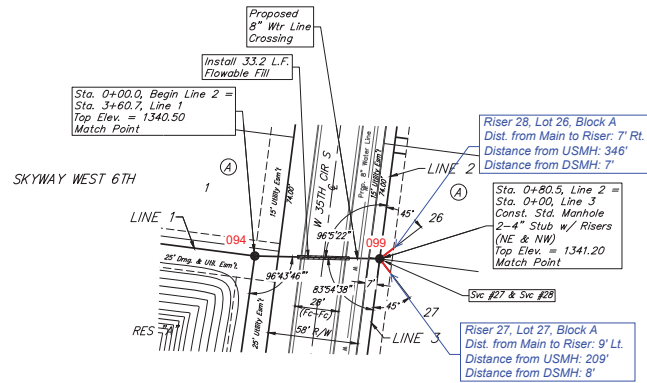
DESIGN: CDW DRAWN: CDW

DATE: July 27, 2023

SHEET OF
04 19

BENCHMARK #1:
CROSS CUT IN SQUARE CUT, TOP OF CURB AT WEST END OF CURB RETURN, NORTHWEST CORNER OF SHEFFORD AND BY 35TH ST S, 14.5' SOUTH & 5.0' WEST OF THE SOUTHEAST CORNER OF LOT 1, BLOCK D, HARVEST RIDGE ADDITION. ELEV. = 1336.39 (NAVD88)

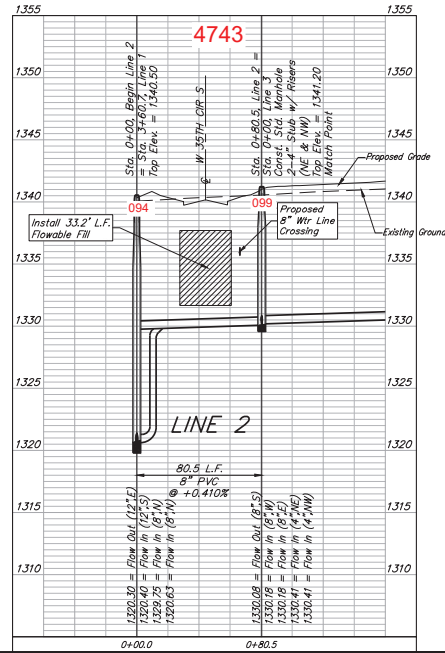
BENCHMARK #2:
CROSS CUT IN SQUARE CUT ON TOP FRONT CENTER OF CATON BASIN, WEST SIDE OF HOLLYWOOD, 4.6' NORTH & 12.8' EAST OF SOUTHEAST CORNER OF LOT 2, BLOCK C, HARVEST RIDGE ADDITION. ELEVATION = 1335.39 (NAVD88)



SEWER SERVICE TABLE

NUMBER	TYPE	LOCATION				FOR INFORMATION ONLY	
		LOT NO.	BLOCK NO.	LINE NO.	STATION/DIRECTION	APPROX. LENGTH	4" PIPE HORIZONTAL
27	4" Stub	27	A	2	0+80.50/RL	6.3	11.3
28	4" Stub	26	A	2	0+80.50/RL	6.3	11.3

NOTE: Vertical Riser Pipe shall be extended to 2' minimum above ground water elevation and 4' maximum below proposed ground elevation.





BAUGHMAN COMPANY
315 Ellis St.
Wichita, KS 67211
316-262-7271
BaughmanCo.com

SKYWAY WEST 6TH ADDITION

LINE 2

SANITARY SEWER IMPROVEMENTS

PROJECT NUMBER:
468-2023-007275

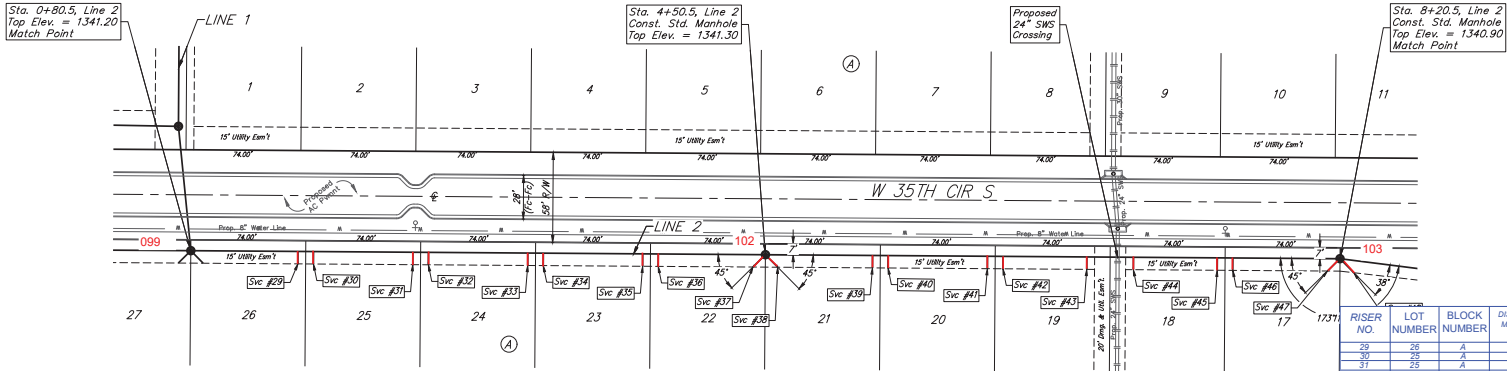
DESIGN: CDW DRAWN: CDW
DATE: July 27, 2023

SHEET OF
05 19

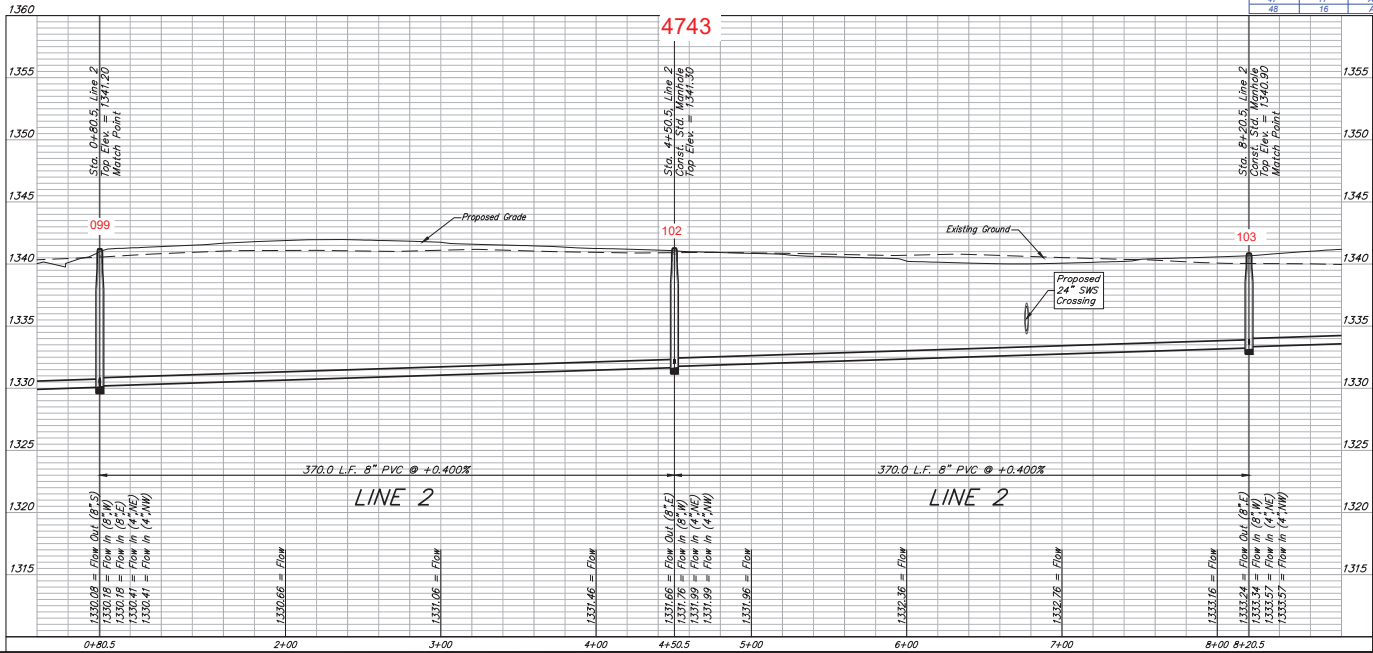
File: E:\Projects\Skylway West\6th_ZZ-05-27-23\BEG\Engineering\Phase 1\SSIS\05.dwg

BENCHMARK #1:
CROSS CUT IN SQUARE CUT, TOP OF CURB AT WEST END OF CURB RETURN, NORTHWEST CORNER OF SHEFFORD AND IN 35TH ST S, 14.5' SOUTH & 5.0' WEST OF THE SOUTHEAST CORNER OF LOT 1, BLOCK D, HARVEST RIDGE ADDITION. ELEV. = 1336.39 (NA1088)

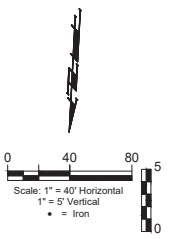
BENCHMARK #2:
CROSS CUT IN SQUARE CUT ON TOP FRONT CENTER OF GARAGE BASIN, WEST SIDE OF HOLLYWOOD, 46' NORTH & 12.8' EAST OF SOUTHEAST CORNER OF LOT 2, BLOCK C, HARVEST RIDGE ADDITION. ELEVATION = 1335.39 (NA1088)



RISER NO.	LOT NUMBER	BLOCK NUMBER	DISTANCE FROM MAIN TO RISER (L,R,T)	DISTANCE FROM	
				UPSTREAM MH	DOWNSTREAM MH
29	26	A	9' R/L	287'	66'
30	26	A	8' R/L	274'	78'
31	25	A	8' R/L	215'	139'
32	24	A	7' R/L	208'	147'
33	24	A	8' R/L	146'	207'
34	23	A	8' R/L	138'	217'
35	23	A	8' R/L	77'	278'
36	22	A	8' R/L	67'	286'
37	22	A	8' R/L	8'	345'
38	21	A	8' R/L	345'	345'
39	21	A	8' R/L	289'	63'
40	20	A	9' R/L	298'	72'
41	20	A	9' R/L	217'	130'
42	19	A	8' R/L	507'	145'
43	19	A	9' R/L	155'	197'
44	18	A	8' R/L	128'	226'
45	18	A	8' R/L	78'	276'
46	17	A	9' R/L	65'	287'
47	17	A	8' R/L	8'	345'
48	16	A	8' R/L	218'	7'



All trench and manhole excavation areas from Sta. 0+80.5 to Sta. 10+46.7, Line 2 shall be backfilled with sand. The sand backfill shall be water-jetted and vibrated during backfilling. All costs shall be paid for as L.F. "Fill, Sand (Flushed & Vibrated)".



BAUGHMAN COMPANY
315 Ellis St.
Wichita, KS 67211
316-262-7271
BaughmanCo.com

SKYWAY WEST
6TH ADDITION

LINE 2

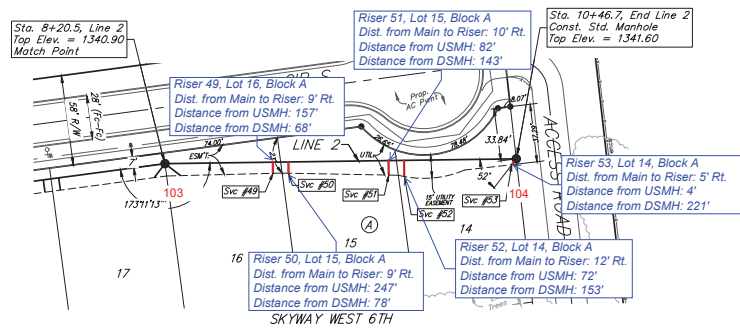
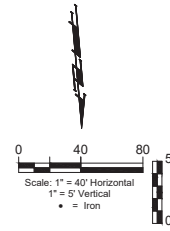
SANITARY SEWER
IMPROVEMENTS
PROJECT NUMBER:
468-2023-007275

DESIGN: CDW DRAWN: CDW
DATE: July 27, 2023
SHEET OF
06 19

P:\E:\Projects\Skyway West\Bldg_ZZ-05-2718\Engineering\Phase 1\SSIS\Bldg

BENCHMARK #1:
CROSS CUT IN SQUARE CUT, TOP OF CURB AT WEST END OF CURB RETURN, NORTHWEST CORNER OF SHEFFORD AND IN 35TH ST S, 14.5' SOUTH & 5.0' WEST OF THE SOUTHWEST CORNER OF LOT 1, BLOCK C, HARVEST RIDGE ADDITION. ELEV. = 1336.39 (NA1088)

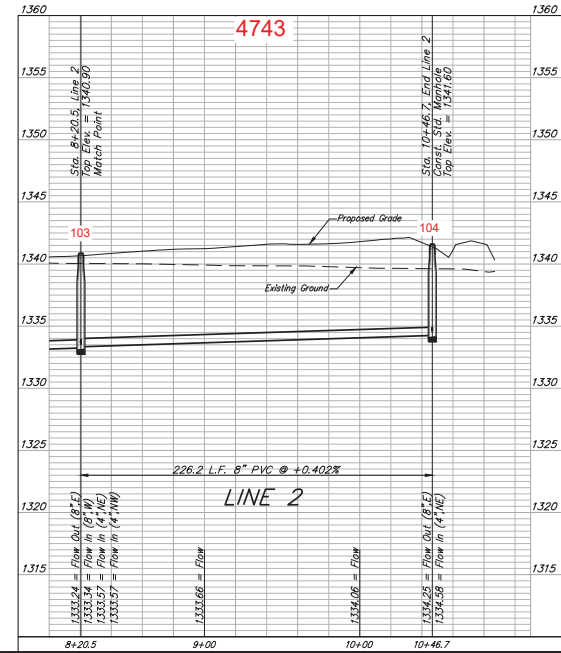
BENCHMARK #2:
CROSS CUT IN SQUARE CUT ON TOP FRONT CENTER OF CATCH BASIN, WEST SIDE OF HOLLYWOOD, 4.6' NORTH & 12.8' EAST OF SOUTHWEST CORNER OF LOT 2, BLOCK C, HARVEST RIDGE ADDITION. ELEVATION = 1335.39 (NA1088)



SEE PLAN SHEET 6 SEWER SERVICE TABLE

NUMBER	TYPE	LOCATION				FOR INFORMATION ONLY	
		LOT NO.	BLOCK NO.	LINE NO.	STATION / DIRECTION	APPROX. LENGTH	* PIPE
29	8" X 4" Tee	26	A	2	1+49.50/RT	6.2	8" 8'-0"
30	8" X 4" Tee	25	A	2	1+50.50/RT	6.3	8" 8'-0"
31	8" X 4" Tee	26	A	2	2+23.50/RT	6.2	8" 8'-0"
32	8" X 4" Tee	24	A	2	2+33.50/RT	6.2	8" 8'-0"
33	8" X 4" Tee	24	A	2	3+29.50/RT	5.9	8" 8'-0"
34	8" X 4" Tee	23	A	2	3+29.50/RT	5.3	8" 8'-0"
35	8" X 4" Tee	22	A	2	3+29.50/RT	5.2	8" 8'-0"
37	4" Stub	22	A	2	4+20.50/RT	4.9	8" 11'-3"
38	4" Stub	21	A	2	4+20.50/RT	5.1	8" 11'-3"
40	8" X 4" Tee	20	A	2	5+20.50/RT	4.0	8" 8'-0"
41	8" X 4" Tee	20	A	2	6+03.50/RT	1.5	8" 8'-0"
42	8" X 4" Tee	19	A	2	6+03.50/RT	1.3	8" 8'-0"
43	8" X 4" Tee	18	A	2	6+27.50/RT	6.0	8" 8'-0"
44	8" X 4" Tee	18	A	2	7+41.50/RT	2.7	8" 8'-0"
45	8" X 4" Tee	17	A	2	7+41.50/RT	1.7	8" 8'-0"
46	8" X 4" Tee	17	A	2	8+20.50/RT	2.8	8" 11'-3"
47	4" Stub	16	A	2	8+20.50/RT	2.8	8" 11'-3"

NOTE: Vertical Riser Pipes shall be extended to 2' minimum above ground water elevation and 4' maximum below proposed ground elevation.



BAUGHMAN COMPANY

315 Ellis St.
Wichita, KS 67211
316-262-7271
BaughmanCo.com

SKYWAY WEST
6TH ADDITION

LINE 2

SANITARY SEWER
IMPROVEMENTS

PROJECT NUMBER:
468-2023-007275

DESIGN: CDW DRAWN: CDW

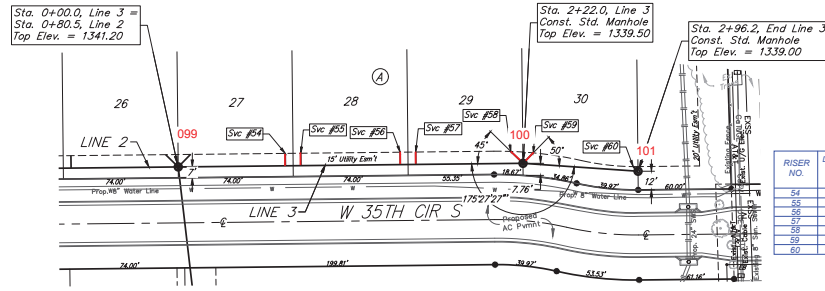
DATE: July 27, 2023

SHEET OF
07 19

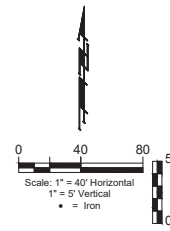
File: E:\Projects\Skylway West\6th_22-05-27\BEG\Engineering\Phase 1\SSSS.swg

BENCHMARK #1:
CROSS CUT IN SQUARE CUT, TOP OF CURB AT WEST END OF CURB RETURN, NORTHWEST CORNER OF SHEFFORD AND IN 35TH ST S, 14.5' SOUTH & 5.0' WEST OF THE SOUTHEAST CORNER OF LOT 1, BLOCK D, HARVEST RIDGE ADDITION.
ELEV. = 1336.39 (NA1088)

BENCHMARK #2:
CROSS CUT IN SQUARE CUT ON TOP FRONT CENTER OF CATCH BASIN, WEST SIDE OF HOLLYWOOD, 4.6' NORTH & 12.8' EAST OF SOUTHEAST CORNER OF LOT 2, BLOCK C, HARVEST RIDGE ADDITION.
ELEVATION = 1335.39 (NA1088)



RISE R NO.	DISTANCE FROM MAIN TO RISE R (L.T./R.T.)	DISTANCE FROM	
		UPSTREAM MH	DOWNSTREAM MH
54	10' LL	151'	86'
55	8' LL	142'	75'
56	8' LL	77'	140'
57	8' LL	62'	155'
58	8' LL	8'	210'
59	8' LL	65'	7'
60	4' LL	2'	70'



SKYWAY WEST 6TH

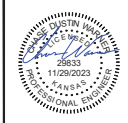
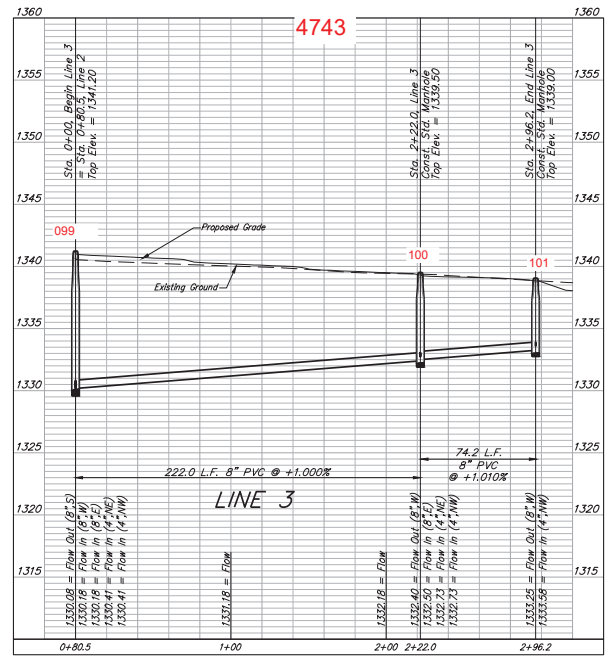
SEE PLAN SHEET 7

SEWER SERVICE TABLE

NUMBER	TYPE	LOT NO.	BLOCK NO.	LOCATION LINE NO.	STATION / DIRECTION	FOR INFORMATION ONLY	
						APPROX. VERTICAL LENGTH	APPROX. HORIZONTAL LENGTH
49	8" x 4" Tee	16	A	2	8+89.90/LL	2.7'	9' 2.25'
50	8" x 4" Tee	15	A	2	2+150.00/LL	2.6'	9' 2.25'
51	8" x 4" Tee	15	A	2	2+54.50/LL	2.6'	10' 8.25'
52	8" x 4" Tee	14	A	2	2+24.50/LL	4.6'	12' 8.25'
53	4" Stub	14	A	2	10+46.70/LL	4.4'	12' 8.25'
54	8" x 4" Tee	22	A	3	0+89.00/LL	4.6'	10' 8.25'
55	8" x 4" Tee	28	A	3	0+22.00/LL	4.4'	10' 8.25'
56	8" x 4" Tee	28	A	3	1+43.00/LL	3.4'	9' 8.25'
57	8" x 4" Tee	29	A	3	1+53.00/LL	3.4'	9' 8.25'
58	4" Stub	30	A	3	2+29.00/LL	3.2'	9' 11.50'
59	4" Stub	30	A	3	2+52.00/LL	4.2'	8' 11.50'
60	4" Stub	30	A	3	2+96.20/LL	1.2'	4' 4.25'

NOTE: Vertical Riser Pipe shall be extended to 2' minimum above ground water elevation and 4' maximum below proposed ground elevation.

All trench and manhole excavation areas from Sta. 0+00 to Sta. 2+96.2, Line 3 shall be backfilled with sand. The sand backfill shall be water-jettted and vibrated during backfilling. All costs shall be paid for as L.F. "Flt. Sand (Flushed & Vibrated)".



BAUGHMAN COMPANY
315 Ellis St.
Wichita, KS 67211
316-262-7271
BaughmanCo.com

SKYWAY WEST 6TH ADDITION

LINE 3

SANITARY SEWER IMPROVEMENTS

PROJECT NUMBER:
468-2023-007275

DESIGN: CDW DRAWN: CDW

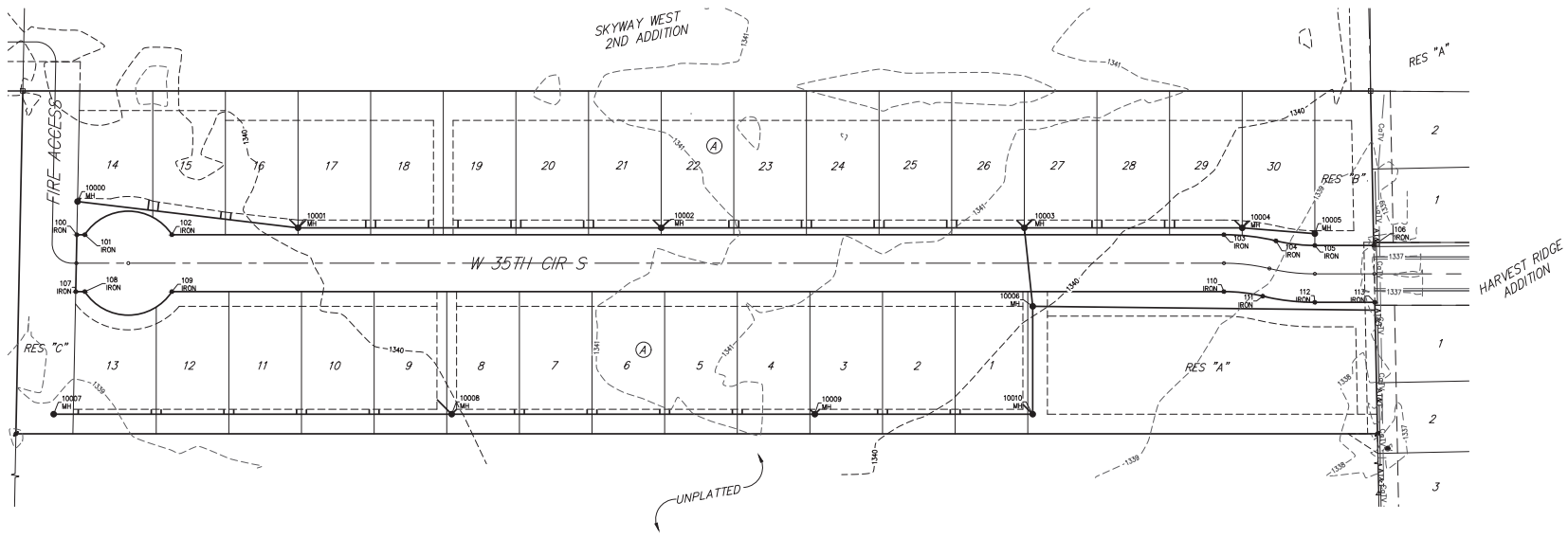
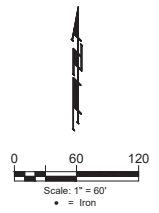
DATE: July 27, 2023

SHEET OF
08 19

File: E:\Projects\Skway West\6th_22-05-27\BEG\Engineering\Phase 1\SSIS\8.dwg

BENCHMARK #1:
CROSS CUT IN SQUARE CUT, TOP OF CURB AT WEST END OF CURB RETURN, NORTHWEST CORNER OF SHEFFORD AND W 35TH ST S, 14.5' SOUTH & 51.0' WEST OF THE SOUTHEAST CORNER OF LOT 1, BLOCK D, HARVEST RIDGE ADDITION.
ELEV = 1336.39 (NAVD88)

BENCHMARK #2:
CROSS CUT IN SQUARE CUT ON TOP FRONT CENTER OF CATCH BASIN, WEST SIDE OF HOLLYWOOD, 4.6' NORTH & 12.8' EAST OF SOUTHEAST CORNER OF LOT 2, BLOCK C, HARVEST RIDGE ADDITION.
ELEVATION = 1335.39 (NAVD88)



SS POINTS				CONVOLS			
Point #	Northing	Easting	Description	Point #	Northing	Easting	Description
10000	1,664,236.09	1,670,060.65	MH	100	1,664,002.25	1,670,061.51	IRON
10001	1,664,078.47	1,670,286.29	MH	101	1,664,002.62	1,670,069.57	IRON
10002	1,664,082.27	1,670,655.95	MH	102	1,664,008.85	1,670,082.50	IRON
10003	1,664,016.06	1,670,025.52	MH	103	1,664,025.31	1,670,238.88	IRON
10004	1,664,061.14	1,670,247.29	MH	104	1,664,001.89	1,670,082.25	IRON
10005	1,664,060.63	1,670,321.48	MH	105	1,664,008.84	1,670,322.63	IRON
10006	1,661,871.53	1,670,037.68	MH	106	1,664,051.36	1,670,381.87	IRON
10007	1,661,876.17	1,670,046.16	MH	107	1,661,844.26	1,670,062.88	IRON
10008	1,661,836.77	1,670,451.28	MH	108	1,661,844.68	1,670,072.20	IRON
10009	1,661,851.57	1,670,620.90	MH	109	1,661,846.77	1,670,360.83	IRON
10010	1,661,863.63	1,670,042.87	MH	110	1,661,893.28	1,670,316.87	IRON
				111	1,661,894.51	1,670,271.39	IRON
				112	1,661,890.70	1,670,324.68	IRON
				113	1,661,893.48	1,670,385.78	IRON



BAUGHMAN COMPANY

315 Ellis St.
Wichita, KS 67211
316-262-7271
BaughmanCo.com

SKYWAY WEST
6TH ADDITION

COORDINATES

SANITARY SEWER
IMPROVEMENTS

PROJECT NUMBER:
468-2023-007275

DESIGN: CDW DRAWN: CDW
DATE: July 27, 2023

SHEET OF
18 19

File: E:\Projects\Skway West\6th_ZZ-05-27-23\Engineering\Phase 1\SSSS.dwg