

CONSTRUCTION PLANS FOR HESS PUMP STATION VALVE REPLACEMENT CITY OF WICHITA

SEDGWICK COUNTY, KANSAS
CITY OF WICHITA PROJECT NO. 448-90958 2024-025462. # for laserfiche
OCA NO. 638074
GARY JANZEN, P.E., CITY ENGINEER

Contractor:
Dondlinger & Sons Construction Co., Inc.
2656 S Sheridan St, Wichita, KS 67217
316-945-0555

Subcontractors/Suppliers:
Valve Supplier: Core & Main/Mid-American Valve
Electrical: Linder & Associates
Painting: Utility Maintenance Contractors

Project Location: WP Hess Pump Station and Generators Site
Project Engineer: Greg Baalman
Special Project Engineer: Stan Breitenbach
Hess Pump Station Superintendent: Bill Weigant

Engineering Consultants: PEC
Design Engineer: Trevor Kaufman

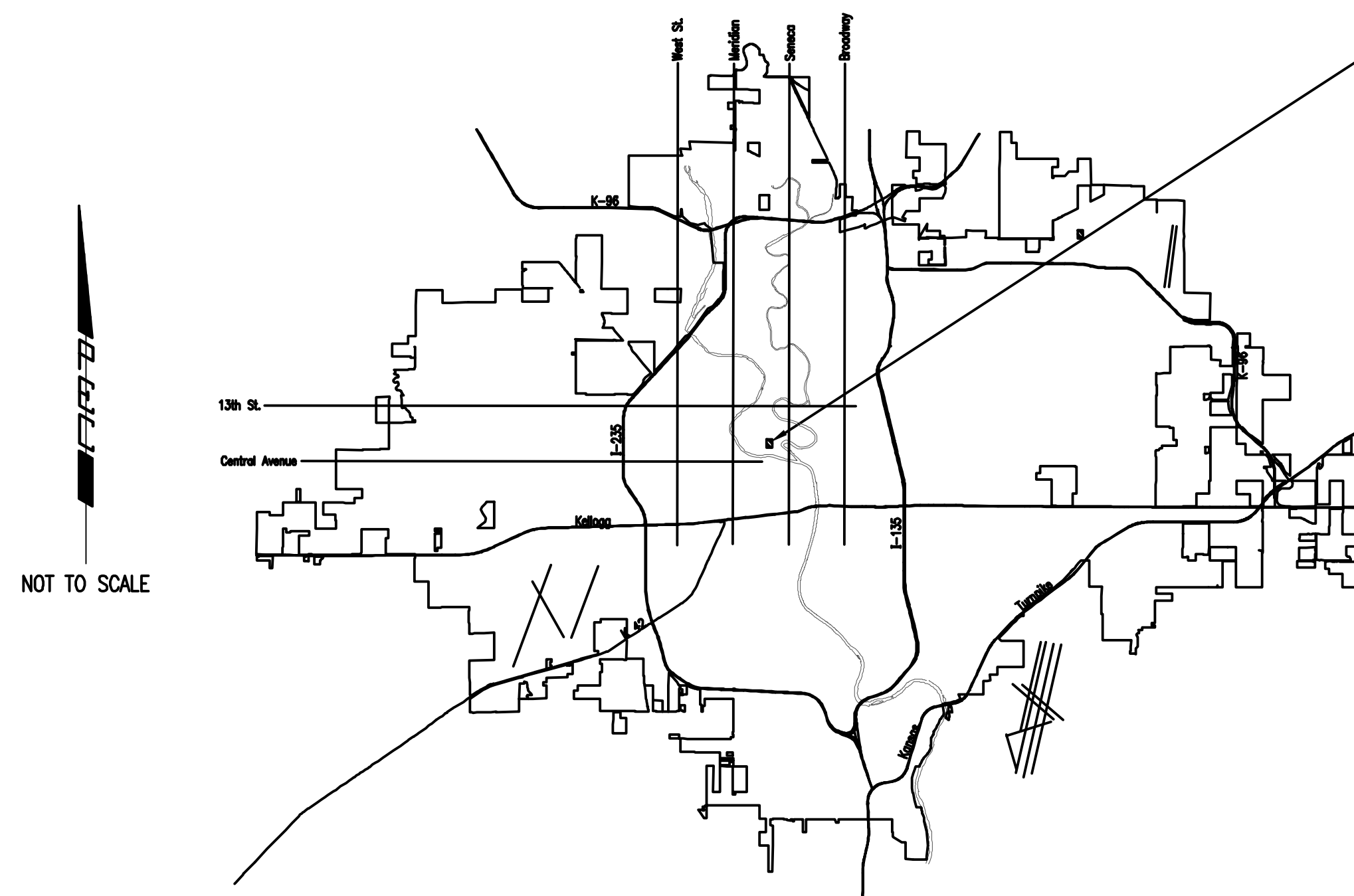
Plant Equipment:
7501 WP Hess Pump Station and Generators Site

Building ID: 7502-100 WP Hess High Service Pump Station
Floor ID: 7502-100-B1 Hess Pump Station Pump Floor
7502-100-B2 Hess Pump Station Sub-Basement

Final Acceptance: 4-19-2024

Change Order # 1 & 2

PROJECT LOCATION
HESS PUMP STATION



VICINITY MAP

INDEX OF SHEETS

G001	TITLE SHEET
G002	KEY MAP & GENERAL NOTES
C101	SEQUENCE PLAN - PUMP DISCHARGE VALVES
C102	SEQUENCE PLAN - PUMP SUCTION VALVES
C103	SEQUENCE PLAN - DISCHARGE HEADER VALVES
C104	SEQUENCE PLAN - SUCTION HEADER VALVES
C501	VALVE REMOVAL AND INSTALLATION DETAILS - PUMP VALVES
C502	VALVE REMOVAL AND INSTALLATION DETAILS - DISCHARGE HEADER
C503	VALVE REMOVAL AND INSTALLATION DETAILS - SUCTION HEADER

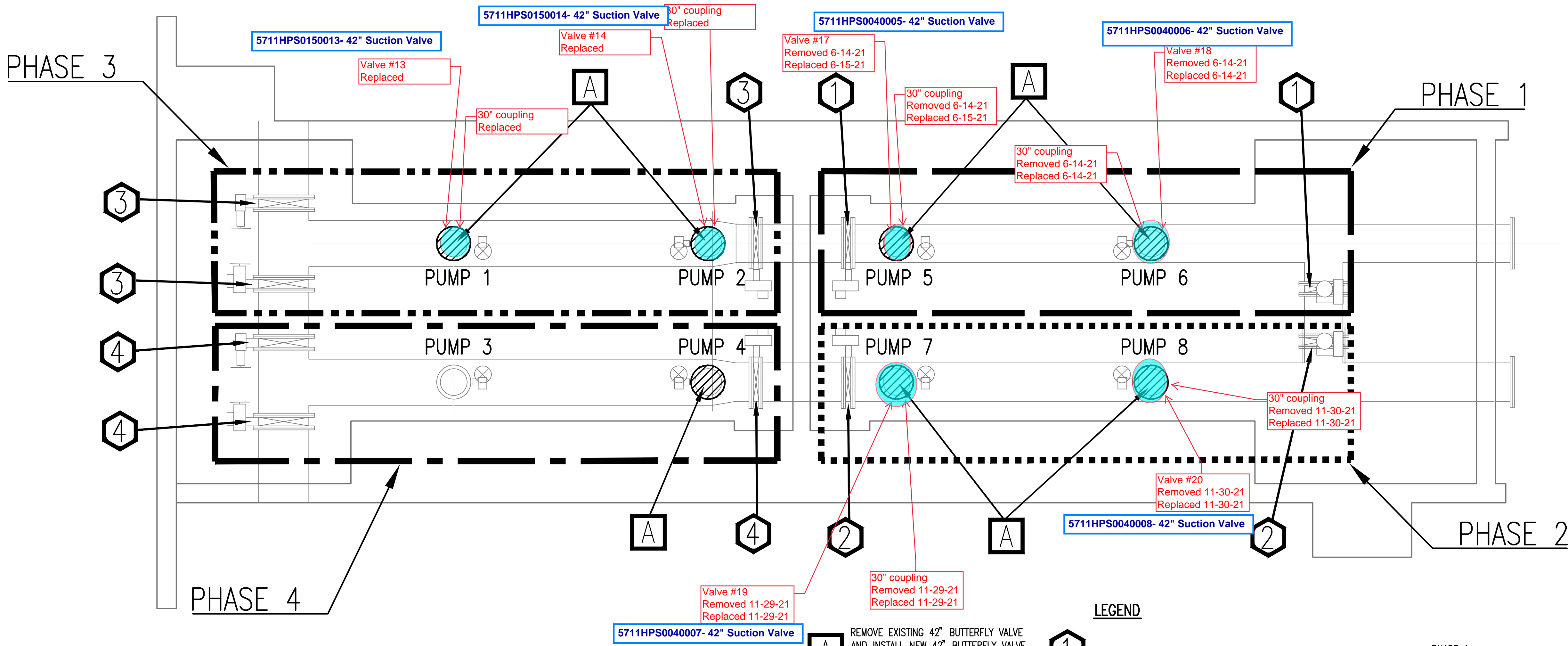
MARCH 2020

PEC PROJECT NO. 35-197042-006-0042/35-197043-014-0042

PLANS PREPARED BY
PROFESSIONAL ENGINEERING CONSULTANTS, P.A.
ENGINEERS
WICHITA, KANSAS



ROOM ID:
 7502-100-B2-001 Hess West Suction Pipe Gallery
 7502-100-B1-002 Hess East Suction Pipe Gallery



5711HPS0040007- 42" Suction Valve

A REMOVE EXISTING 42" BUTTERFLY VALVE AND INSTALL NEW 42" BUTTERFLY VALVE WITH MANUAL ACTUATOR. (SEE DETAIL 42" BUTTERFLY VALVE REMOVAL AND INSTALLATION, SHEET C501)

LEGEND

- ① CLOSED VALVE - PHASE 1
- ② CLOSED VALVE - PHASE 2
- ③ CLOSED VALVE - PHASE 3
- ④ CLOSED VALVE - PHASE 4

NOTES:
 1. ALL VALVES SHOULD BE OPENED AFTER EACH PHASE IS COMPLETED. IF ADDITIONAL VALVE CLOSURES ARE REQUIRED THIS SHOULD BE COORDINATED WITH THE CITY.

- PHASE 1
- - - PHASE 2
- · - · PHASE 3
- · — PHASE 4



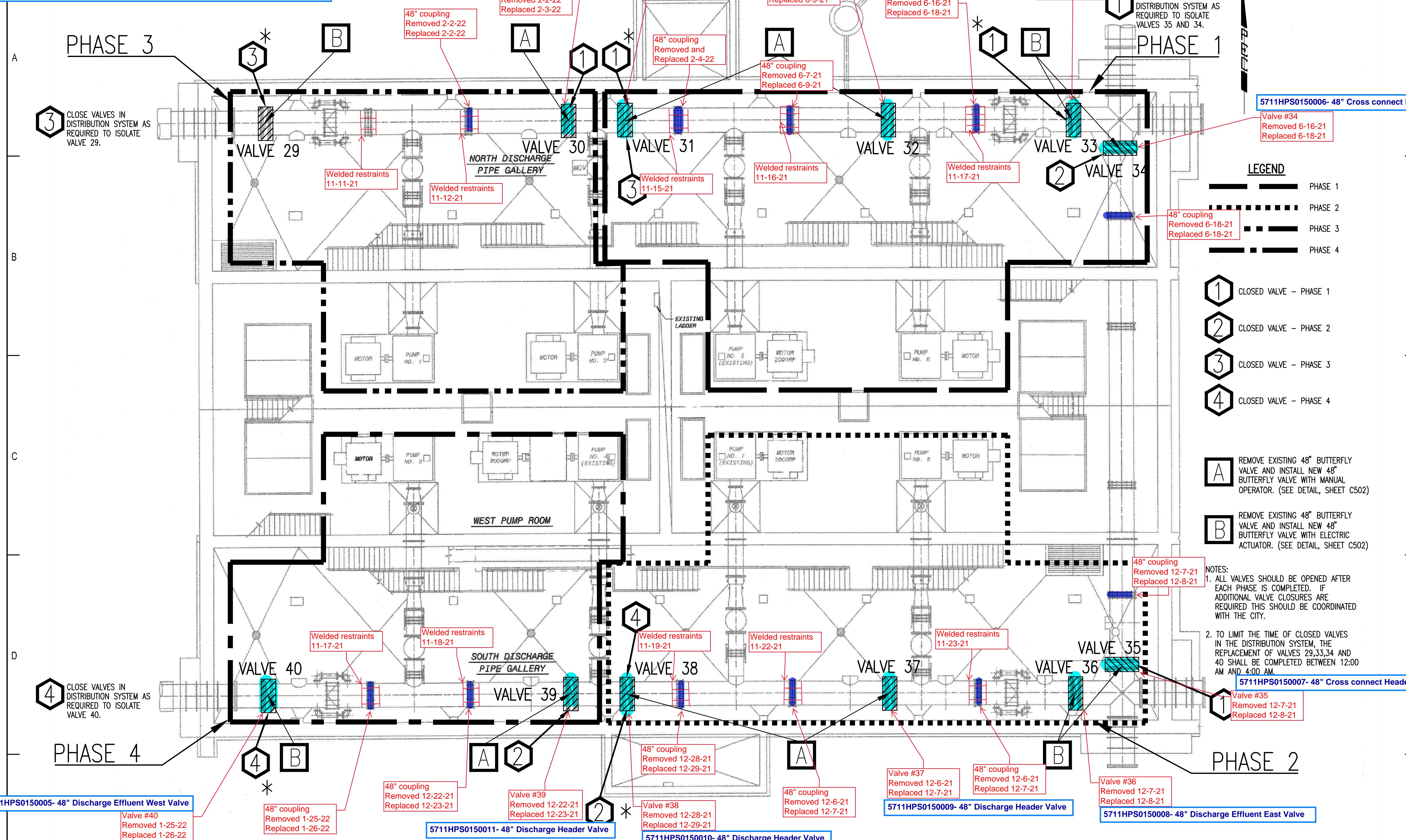
WATER TREATMENT PLANT
 VALVE ACTUATOR REPLACEMENT
 CITY OF WICHITA PROJECT NO. 448-90958
 GARY JANZEN, P.E. - CITY ENGINEER

Issue:	
JOB NO. 197042-006/197043-014	
DATE	MARCH 2020
PM	MDK
DESIGNED BY	TBK
DRAWN BY	CAL
CHECKED BY	RWG

SEQUENCE PLAN - PUMP SUCTION VALVES

ROOM ID:
 7502-100-B1-011 Hess North Discharge Pipe Gallery
 7502-100-B1-012 Hess South Discharge Pipe Gallery

5711HPS0150002- 48" Discharge Header Valve 5711HPS0150003- 48" Discharge Header Valve 5711HPS0150004- 48" Discharge Header Valve 5711HPS0150005- 48" Discharge Effluent East Valve



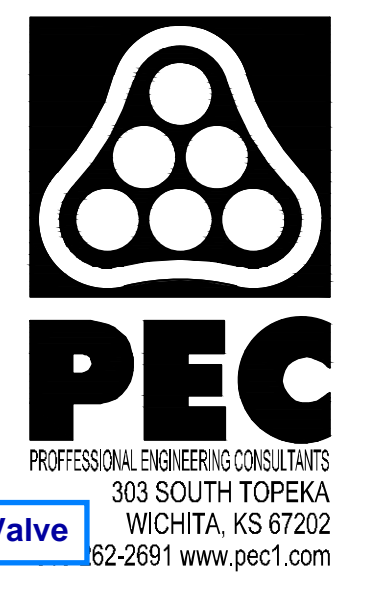
- LEGEND**
- PHASE 1
 - PHASE 2
 - PHASE 3
 - PHASE 4
 - CLOSED VALVE - PHASE 1
 - CLOSED VALVE - PHASE 2
 - CLOSED VALVE - PHASE 3
 - CLOSED VALVE - PHASE 4

- A** REMOVE EXISTING 48" BUTTERFLY VALVE AND INSTALL NEW 48" BUTTERFLY VALVE WITH MANUAL OPERATOR. (SEE DETAIL, SHEET C502)
- B** REMOVE EXISTING 48" BUTTERFLY VALVE AND INSTALL NEW 48" BUTTERFLY VALVE WITH ELECTRIC ACTUATOR. (SEE DETAIL, SHEET C502)

NOTES:

1. ALL VALVES SHOULD BE OPENED AFTER EACH PHASE IS COMPLETED. IF ADDITIONAL VALVE CLOSURES ARE REQUIRED THIS SHOULD BE COORDINATED WITH THE CITY.
2. TO LIMIT THE TIME OF CLOSED VALVES IN THE DISTRIBUTION SYSTEM, THE REPLACEMENT OF VALVES 29,33,34 AND 40 SHALL BE COMPLETED BETWEEN 12:00 AM AND 4:00 AM.

* THESE MAY BE CLOSED FOLLOWING NEW VALVE INSTALLATION TO ISOLATE OTHER VALVES.



WATER TREATMENT PLANT
 VALVE ACTUATOR REPLACEMENT
 CITY OF WICHITA PROJECT NO. 448-90958
 GARY JANZEN, P.E. - CITY ENGINEER

Issue:	
JOB NO. 197042-006/197043-014	
DATE	MARCH 2020
PM	MDK
DESIGNED BY	TBK
DRAWN BY	CAL
CHECKED BY	RWG

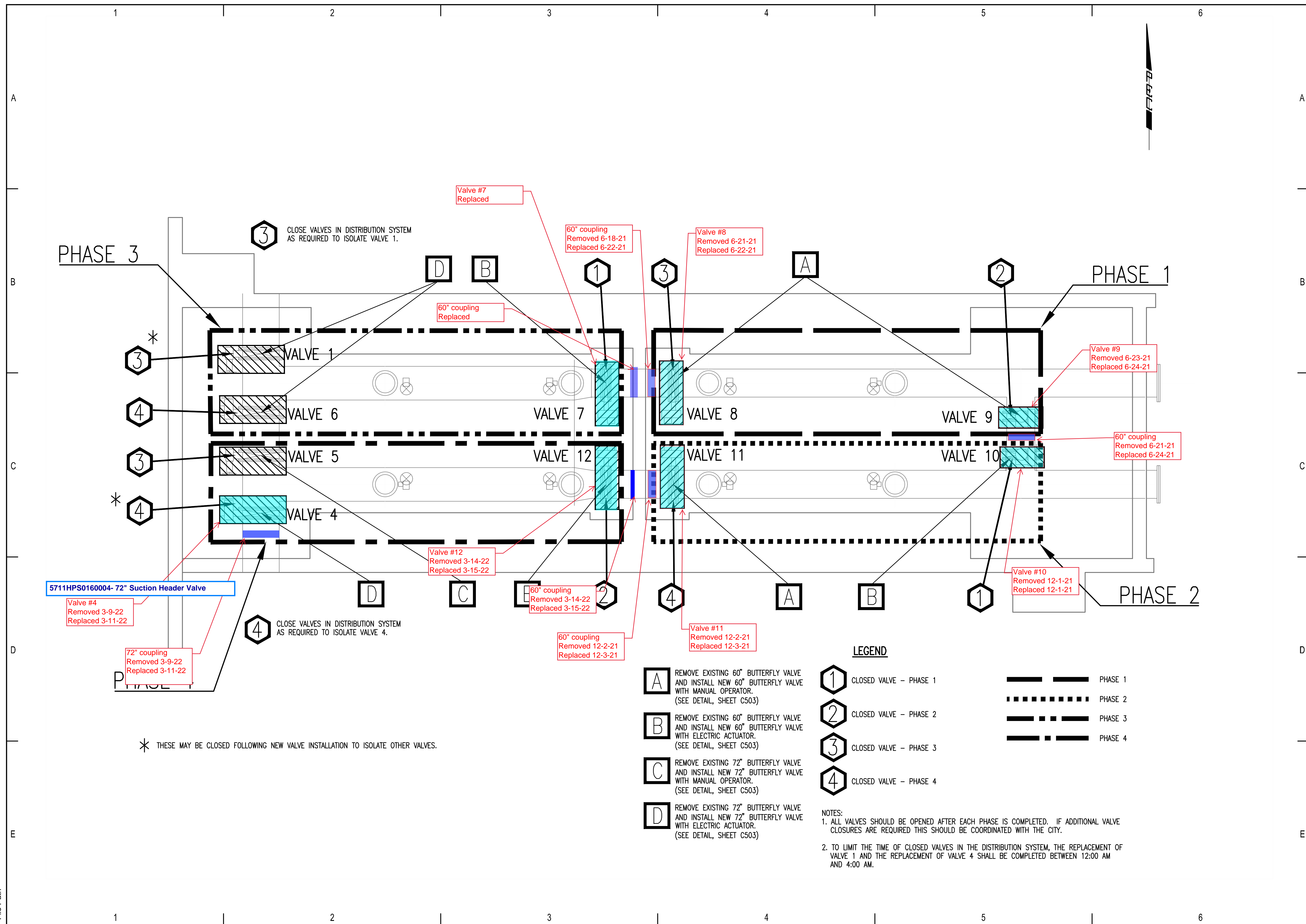
SEQUENCE PLAN - DISCHARGE HEADER VALVES



WATER TREATMENT PLANT
VALVE ACTUATOR REPLACEMENT

CITY OF WICHITA PROJECT NO. 448-90958
GARY JANZEN, P.E. - CITY ENGINEER

Issue:	
JOB NO. 197042-006/197043-014	
DATE	MARCH 2020
PM	MDK
DESIGNED BY	TBK
DRAWN BY	CAL
CHECKED BY	RWG
SEQUENCE PLAN - SUCTION HEADER VALVES	





REPLACE ALL EXISTING NUTS/BOLTS WITH NEW THREADED STUDS AND NUTS

REMOVE AND REPLACE EXISTING 48" BUTTERFLY VALVE

LOOSEN/REMOVE BOLTED TIE-DOWNS AT PIPE SUPPORT AS REQUIRED FOR VALVE REPLACEMENT

REMOVE AND REPLACE EXISTING 48" COUPLING (BID AS SEPARATE ITEM)

REMOVE AND REPLACE EXISTING ACTUATOR

48" BUTTERFLY VALVE REMOVAL AND INSTALLATION



REPLACE ALL EXISTING NUTS/BOLTS WITH NEW THREADED STUDS AND NUTS

REMOVE AND REPLACE EXISTING 48" BUTTERFLY VALVE

REMOVE AND REPLACE EXISTING 48" COUPLING (BID AS SEPARATE ITEM)

REMOVE AND REPLACE EXISTING ELECTRIC ACTUATOR

LOOSEN/REMOVE BOLTED TIE-DOWNS AT PIPE SUPPORT AS REQUIRED FOR VALVE REPLACEMENT

48" BUTTERFLY VALVE REMOVAL AND INSTALLATION (WITH CHECK VALVE)



**WATER TREATMENT PLANT
VALVE ACTUATOR REPLACEMENT**

CITY OF WICHITA PROJECT NO. 448-90958
GARY JANZEN, P.E. - CITY ENGINEER

Issue:	
JOB NO.	197042-006/197043-014
DATE	MARCH 2020
PM	MDK
DESIGNED BY	TBK
DRAWN BY	CAL
CHECKED BY	RWG

VALVE REMOVAL AND INSTALLATION DETAILS - DISCHARGE HEADER

C502

