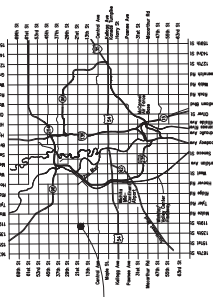


# SANITARY SEWER TO SERVE SUNRIDGE 4TH ADDITION

CITY OF WICHITA, KANSAS

Paul Gunzelman, P.E. Interim City Engineer  
Project Number: 468-2022-030906  
Orig Code: 47267923  
Munis Number: E3046

Nearest Construction Company:  
S. Lowe - City of Wichita, Field Project Engineer  
J. Starks - City of Wichita, Inspector  
As-Built  
Stubs & Risers  
Release Data (for connection purposes only): 1/7/2025  
pdf: approx. 1/24/2025

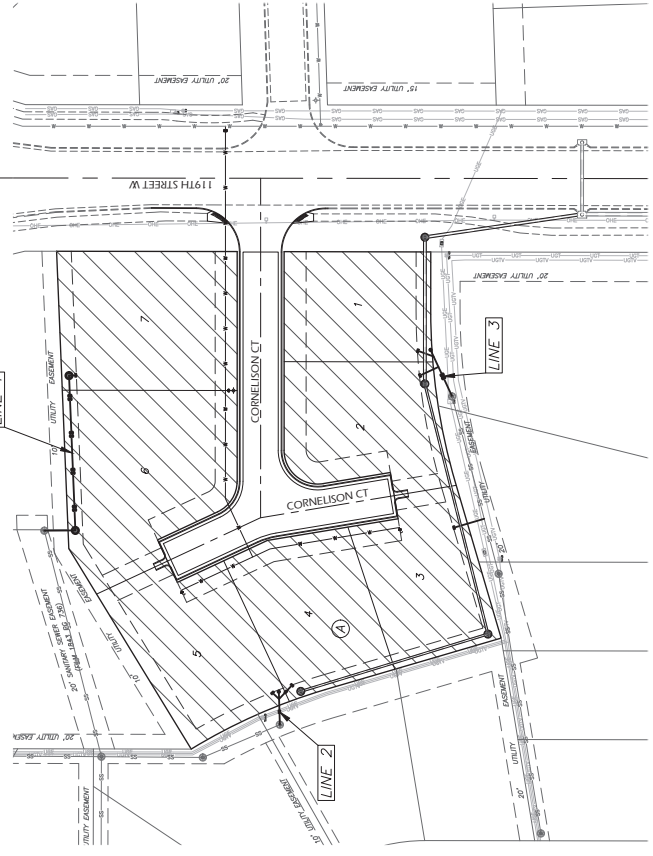


Vicinity Map  
(for reference only)

**INDEX OF SHEETS:**

|         |                                  |
|---------|----------------------------------|
| 1.0     | Chart Sheet                      |
| 2.0     | Control Map                      |
| 3.0     | Plan, Profile, & Section         |
| 4.0-4.3 | Plan, Profile, & Section, Sheets |
| 5.0     | Erosion Control Plan             |
| 6.0     | As-Built                         |
| 6.5     | As-Built                         |
| 6.6     | As-Built                         |
| 6.7     | As-Built                         |
| 6.8     | As-Built                         |
| 6.9     | As-Built                         |
| 7.0     | As-Built                         |

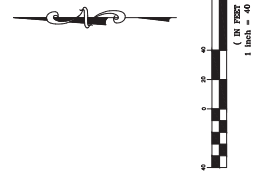
**4649A  
NWI-03**



**BENCHMARKS:**

BM1: Chiseled "C" on top of curb, on the west side of 19th Street, Approx. 30' east of the SE corner of Sunridge 4th Addition. Elevation = 1355.88 (NWD 88)

BM2: North Rim of SS MH, Approx. 190' west, and 8' north of the NE corner of Sunridge 4th Addition. Elevation = 1358.14 (NWD 88).



## GENERAL NOTES:

- The Contractor shall comply with all applicable safety regulations. All construction shall be completed following current City Standard Specifications and Special Provisions.
- Contractor will be required to provide notice to utility companies a minimum of seventy-two (72) hours prior to any encroachment, as follows:  
Kansas One-Call 687-2470  
The Contractor must notify the following in case of an emergency:  
AT&T 1-800-246-8464  
Black Hills Energy 1-800-694-8889  
City of Wichita Stormwater 1-316-268-4000  
City of Wichita Traffic 1-316-268-4036  
City of Wichita Police 1-316-268-4036  
Kansas Gas Service 1-888-482-4950  
Kern Energy 1-800-544-4657
- Utility service lines, poles, etc. are to be adjusted as necessary by others prior to construction unless the Contractor or unless the plans specifically identify a utility to be adjusted by its owner during construction. Plans, represent the best information obtainable for existing utilities within the right-of-way which do not conflict with proposed construction.
- Excavation shall be to be walled with sheet piling, shoring, bracing, and other means. Locations, in utility, appearance and site location. Locations, in appearance will not be approved. All disposal sites must be approved by the City Engineer. Material either stockpiled or placed in a flood plain will require a Kansas State Board of the United States or wetlands is subject to U.S. Corps of Engineers approval. Additional archaeological investigations unless buried in a previously approved borrow location.
- Trees and shrubs in public right-of-way which are in good health and are to be preserved shall be removed by the Contractor with the City Engineer's approval. Trees and shrubs which are not in direct contact with the proposed construction shall be saved and protected from damage.
- The Contractor shall give all property owners notice of this project a minimum of ten (10) days notice prior to start of construction.
- The Contractor shall be responsible for preserving property from. The Contractor will be required to provide a minimum of ten (10) days notice prior to start of construction. Such trees shall be re-established by a licensed land surveyor in accordance with state laws.
- The Engineering Division shall locate water valves one (1) foot from the curb. The Contractor shall be responsible for field locations during the construction process. Meter valves, manholes, and other structures shall be located and marked as required by the Contractor of this own expense. Valve locations shall be marked with reflective paint. All construction zone markings and signage shall conform to the latest version of the Manual on Uniform Traffic Control Devices (MUTCD) published by the Federal Highway Administration. All costs associated with construction markings and signage shall be the Contractor's responsibility.
- All elevations shown are MVD 88.
- All areas delineated, which construction that will not be under proposed pavement shall be restored to match existing conditions.



117 E. Lewis, Wichita, KS 67202 (316)284-0242

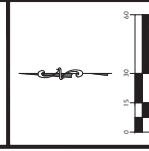
MARCH 2024





# SUNRIDGE 4TH ADDITION SANITARY SEWER

WICHITA, KANSAS

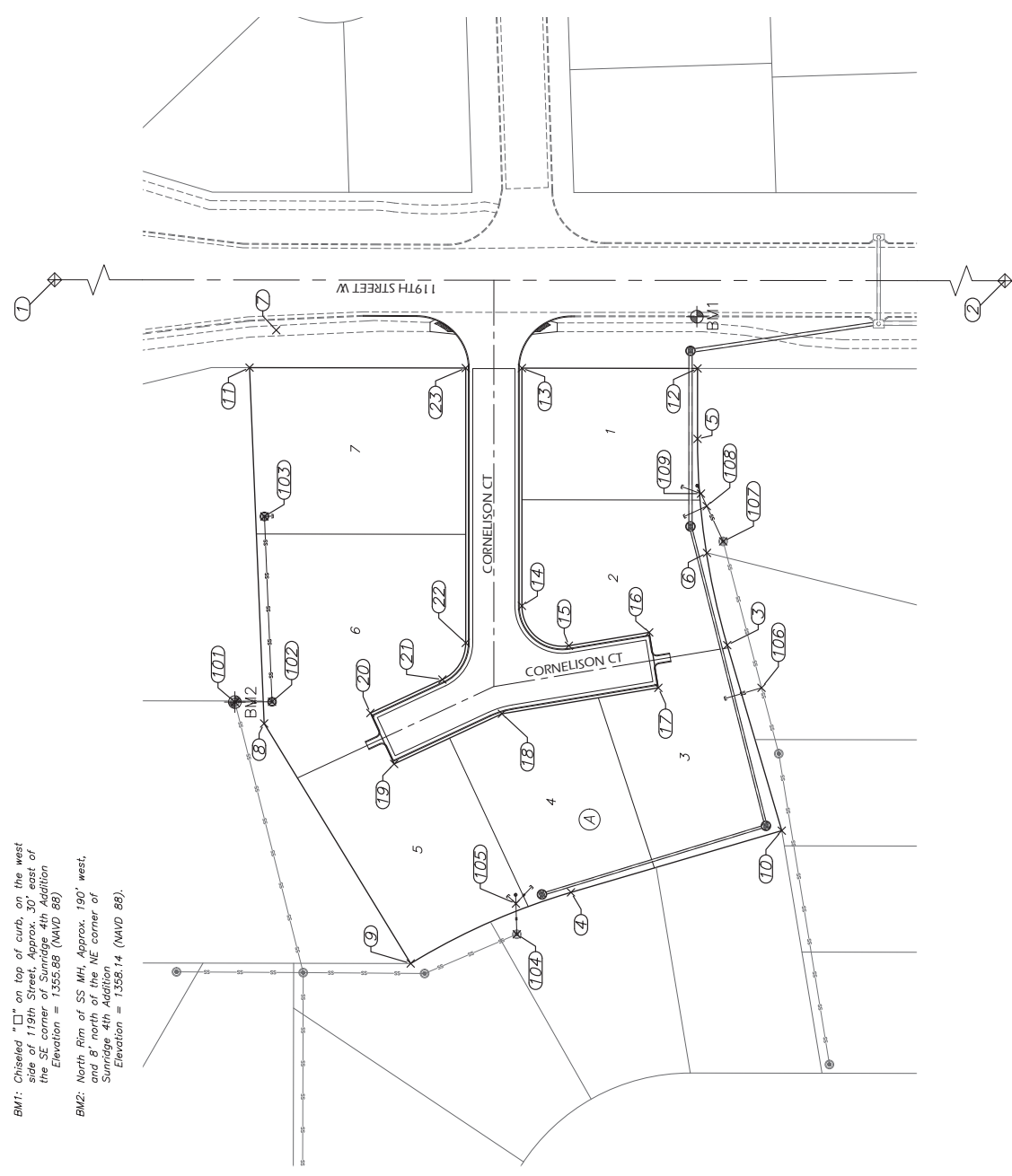


| REVISIONS |             |
|-----------|-------------|
| NO.       | DESCRIPTION |
|           |             |
|           |             |
|           |             |

|           |       |       |          |
|-----------|-------|-------|----------|
| KEM PROJ. | 21183 | DATE  | 03.20.24 |
| DESIGNED  | KEM   | DRAWN | ZJIS     |

| Point # | Row Description    | Northing   | Easting    |
|---------|--------------------|------------|------------|
| 1       | R4 in Thmbd        | 1698367.43 | 1607022.46 |
| 2       | 3/4" I.P. in Thmbd | 1697226.62 | 1607019.81 |
| 3       | 1" I.P.            | 1697256.60 | 1606814.09 |
| 4       | 3/4" I.P.          | 1697814.57 | 1606673.27 |
| 5       | 3/4" I.P.          | 1697745.51 | 1606831.57 |
| 6       | 3/4" I.P.          | 1697331.11 | 1606866.60 |
| 7       | Find Cross         | 1697862.42 | 1606893.48 |
| 8       | 1" I.P.            | 1697863.32 | 1606769.45 |
| 9       | 600' Not in Tree   | 1697905.64 | 1606832.74 |
| 10      | 3/4" I.P.          | 1697694.54 | 1606708.40 |
| 11      | 1" I.P.            | 1697897.63 | 1606972.17 |
| 12      | 1" I.P.            | 1697742.50 | 1606971.70 |
| 13      | R4-KEMPA           | 1697842.50 | 1606971.89 |
| 14      | R4-KEMPA           | 1697842.51 | 1606836.45 |
| 15      | R4-KEMPA           | 1697815.25 | 1606813.25 |
| 16      | R4-KEMPA           | 1697703.03 | 1606821.33 |
| 17      | R4-KEMPA           | 1697764.80 | 1606789.76 |
| 18      | R4-KEMPA           | 1697853.97 | 1606774.89 |
| 19      | R4-KEMPA           | 1697915.28 | 1606746.40 |
| 20      | R4-KEMPA           | 1697926.60 | 1606725.41 |
| 21      | R4-KEMPA           | 1697897.60 | 1606794.51 |
| 22      | R4-KEMPA           | 1697874.51 | 1606815.36 |
| 23      | R4-KEMPA           | 1697874.50 | 1606971.94 |

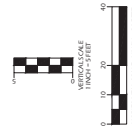
| Point # | Row Description | Northing   | Easting    |
|---------|-----------------|------------|------------|
| 101     | 0+00.00 SSI     | 1698005.39 | 1606791.66 |
| 102     | 0+21.16 SSI     | 1697984.82 | 1606781.83 |
| 103     | 1+26.89 SSI     | 1697989.15 | 1606897.40 |
| 104     | 0+00.00 SSI     | 1697845.41 | 1606649.39 |
| 105     | 0+17.48 SSI     | 1697845.84 | 1606666.86 |
| 106     | 0+38.78 SSI     | 1697706.06 | 1606789.77 |
| 107     | 1+25.00 SSI     | 1697727.91 | 1606873.18 |
| 108     | 1+47.18 SSI     | 1697737.26 | 1606883.29 |
| 109     | 1+55.00 SSI     | 1697742.55 | 1606900.38 |



**BENCHMARKS:**  
 BM1: Chiseled "□" on top of curb on the west side of 19th Street. Approx. 30' east of the SE corner of Sunridge 4th Addition. Elevation = 1355.88 (NAVD 88).  
 BM2: North Rim of SS MH, Approx. 190' west, and 8' north of the NE corner of Sunridge 4th Addition. Elevation = 1356.14 (NAVD 88).



# SANITARY SEWER SUNRIDGE 4TH ADDITION WICHITA, KANSAS



| REVISIONS |  |
|-----------|--|
|           |  |
|           |  |
|           |  |

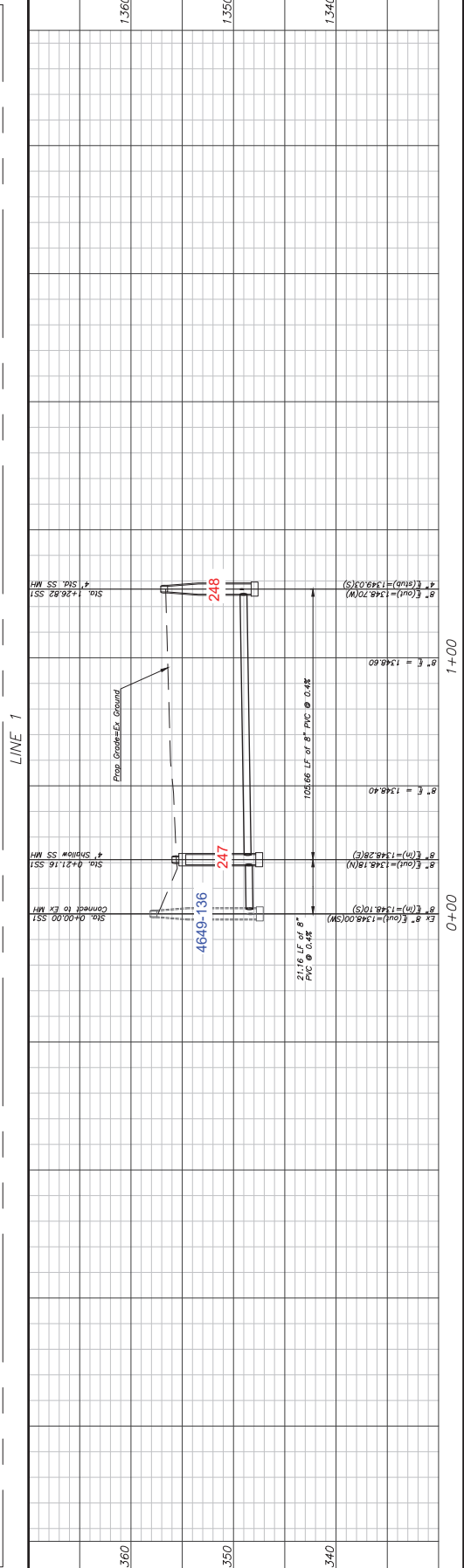
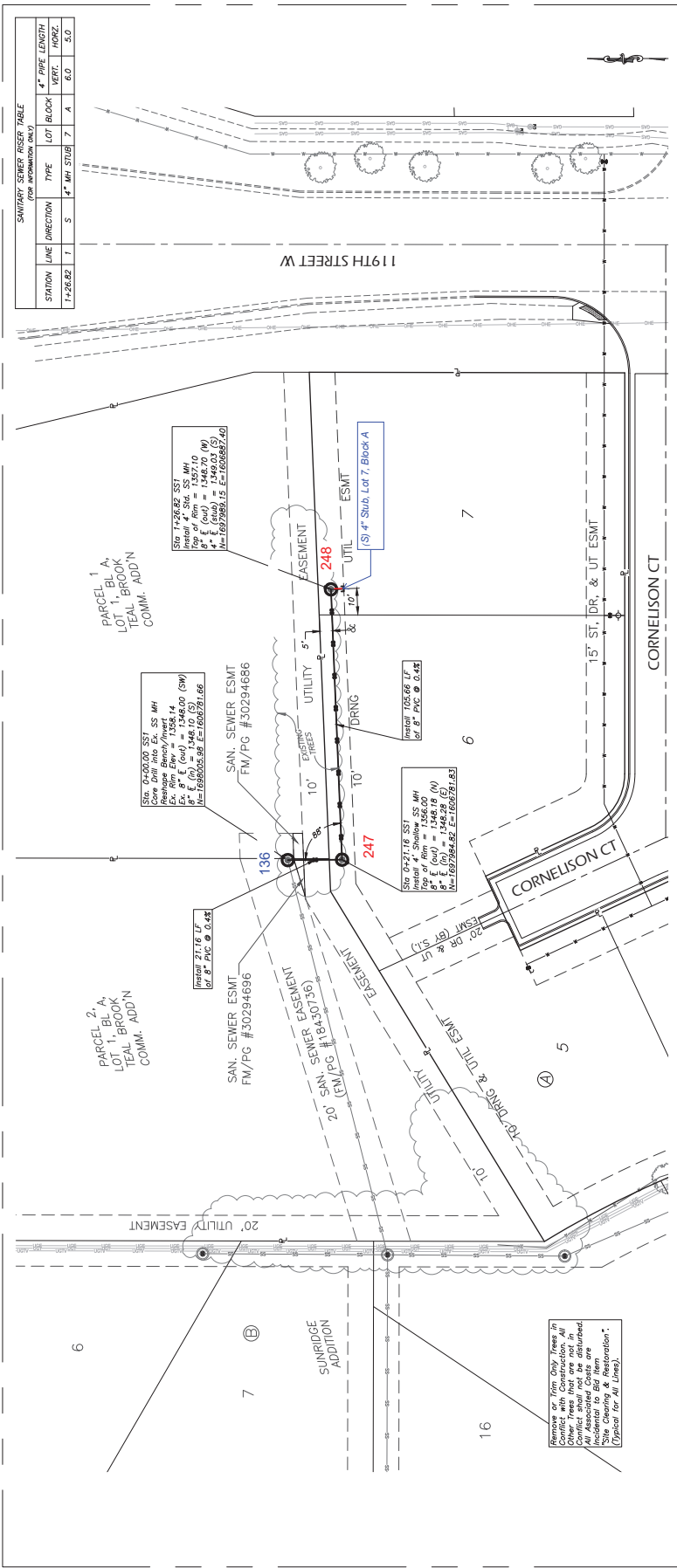
DATE: 03.20.24  
 DESIGNED BY: ZJS  
 DRAWN BY: ZJS

Plan & Profile  
 Line 1

SHEET 3.0

SANITARY SEWER RESET TABLE  
 (FOR INFORMATION ONLY)

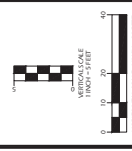
| STATION | LINE | DIRECTION | TYPE       | LOT | BLOCK | 4" PIPE LENGTH VERT. | 4" PIPE LENGTH HORZ. |
|---------|------|-----------|------------|-----|-------|----------------------|----------------------|
| 1+26.82 | 1    | S         | 4" MM STUB | 7   | A     | 6.0                  | 5.0                  |



Sanitary Sewer Lines  
 shown in this drawing are  
 to be installed in accordance  
 with the applicable code  
 and specifications. All  
 associated costs are  
 to be borne by the  
 owner. (Typical for All Lines)



**SANITARY SEWER**  
**SUNRIDGE 4TH ADDITION**  
WICHITA, KANSAS



| REVISIONS |  |
|-----------|--|
|           |  |
|           |  |
|           |  |
|           |  |
|           |  |

MEM PROJ: 21183  
DATE: 03.20.24  
DESIGNED: KEM  
DRAWN: ZJS

**Plan & Profile**  
**Lines 2 & 3**

SHEET **3.1**

