

**GENERAL NOTES**

- THE CONTRACTOR SHALL COMPLY WITH ALL APPLICABLE SAFETY REGULATIONS. ALL CONSTRUCTION SHALL BE COMPLETED FOLLOWING CURRENT CITY STANDARD SPECIFICATIONS AND SPECIAL PROVISIONS.
- CONTRACTOR WILL BE REQUIRED TO PROVIDE NOTICE TO UTILITY COMPANIES A MINIMUM OF SEVENTY-TWO (72) HOURS PRIOR TO ANY EXCAVATION, AS FOLLOWS:  
KANSAS ONE-CALL 687-2470  
THE CONTRACTOR MUST NOTIFY THE FOLLOWING IN CASE OF AN EMERGENCY:  
AT&T 1-800-246-8464  
BLACK HILLS ENERGY (GAS) 1-800-694-8989  
CITY OF WICHITA WATER & SEWER 1-316-219-8921  
CITY OF WICHITA STORMWATER 1-316-268-4090  
CITY OF WICHITA TRAFFIC 1-316-268-4034  
COX COMMUNICATIONS 1-888-249-3530  
KANSAS GAS SERVICE 1-888-462-4950  
ENERGY 1-800-544-4857
- UTILITY SERVICE LINES, POLES, ETC. ARE TO BE ADJUSTED AS NECESSARY BY OTHERS PRIOR TO CONSTRUCTION UNLESS THE PLANS SPECIFICALLY CALL FOR THEIR ADJUSTMENT BY THE CONTRACTOR OR UNLESS THE PLANS SPECIFICALLY IDENTIFY A UTILITY TO BE ADJUSTED BY ITS OWNER DURING CONSTRUCTION. EXISTING UTILITIES AND THEIR LOCATION, AS SHOWN ON THE PLANS, REPRESENT THE BEST INFORMATION OBTAINABLE FOR DESIGN. THE CONTRACTOR WILL BE REQUIRED TO WORK AROUND EXISTING UTILITIES WITHIN THE RIGHT-OF-WAY WHICH DO NOT CONFLICT WITH PROPOSED CONSTRUCTION.
- RUBBLE FROM THE REMOVAL OF MISCELLANEOUS STRUCTURES AND EXCESS EXCAVATION WHICH IS TO BE WASTED SHALL BE DISPOSED OF ON SITES TO BE PROVIDED BY THE CONTRACTOR. THESE SITES SHALL BE APPROVED BY THE ENGINEER AS TO SUITABILITY, APPEARANCE AND SITE LOCATION. LOCATIONS, IN THE OPINION OF THE ENGINEER, THAT WILL LEAVE AN UNSIGHTLY APPEARANCE WILL NOT BE APPROVED. ALL DISPOSAL SITES MUST BE APPROVED BY THE KANSAS DEPARTMENT OF HEALTH AND ENVIRONMENT. MATERIAL EITHER STOCKPILED OR DISPOSED OF IN A FLOOD PLAIN WILL REQUIRE A KANSAS STATE BOARD OF AGRICULTURE PERMIT. ANY MATERIAL DUMPED IN WATERS OF THE UNITED STATES OR WETLANDS IS SUBJECT TO U.S. CORPS OF ENGINEERS PERMITTING REGULATIONS. ANY MATERIAL BURIED OR STOCKPILED BEYOND APPROVED CONSTRUCTION LIMITS WILL REQUIRE ADDITIONAL ARCHAEOLOGICAL INVESTIGATIONS UNLESS BURIED IN A PREVIOUSLY APPROVED BORROW LOCATION.
- TREES AND SHRUBS IN PUBLIC RIGHT-OF-WAY WHICH ARE IN DIRECT CONFLICT WITH PROPOSED NEW CONSTRUCTION SHALL BE REMOVED BY THE CONTRACTOR WITH THE CITY ENGINEER'S APPROVAL. TREES AND SHRUBS WHICH ARE NOT IN DIRECT CONFLICT WITH PROPOSED NEW CONSTRUCTION SHALL BE SAVED AND PROTECTED FROM DAMAGE.
- THE CONTRACTOR SHALL GIVE ALL PROPERTY OWNERS AND/OR TENANTS OF DEVELOPED PROPERTY ADJUTING THE CONSTRUCTION OF THIS PROJECT A MINIMUM OF TEN (10) DAYS NOTICE PRIOR TO START OF CONSTRUCTION.
- THE CONTRACTOR SHALL BE RESPONSIBLE FOR PRESERVING PROPERTY IRONS. THE CONTRACTOR WILL BE REQUIRED TO RE-ESTABLISH ANY PROPERTY IRONS WHICH ARE DAMAGED OR DESTROYED BY HIS CONSTRUCTION OPERATIONS. SUCH IRONS SHALL BE RE-ESTABLISHED BY A LICENSED LAND SURVEYOR IN ACCORDANCE WITH STATE LAWS.
- THE ENGINEERING DIVISION SHALL FIELD LOCATE WATER VALVES ONE TIME DURING CONSTRUCTION WHEN REQUESTED BY THE CONTRACTOR. IT SHALL BE THE CONTRACTOR'S RESPONSIBILITY TO PRESERVE SUCH FIELD LOCATIONS DURING THE CONSTRUCTION PROCESS. WATER VALVES, VALVE BOXES OR FIRE HYDRANTS DAMAGED DURING CONSTRUCTION SHALL BE REPAIRED BY CONTRACTOR AT HIS OWN EXPENSE. VALVE BOXES AND WATER METERS WITHIN THE PROJECT LIMITS SHALL BE ADJUSTED TO MATCH FIELD GRADES BY THE CONTRACTOR.
- THE CONTRACTOR SHALL NOTIFY THE INSPECTING ENGINEER AND DAWNITA REINHARDT AT 650-0740 WITH THE CITY OF WICHITA WITH THE ANTICIPATED CONSTRUCTION START DATE AND NOTIFY THEM OF PROJECT COMPLETION. STAKING AND INSPECTION FOR THIS PROJECT WILL BE THE RESPONSIBILITY OF THE CONTRACTOR.
- IF TRAFFIC WILL BE IMPACTED BY CONSTRUCTION, A TRAFFIC CONTROL PLAN MUST BE SUBMITTED AND APPROVED BY THE CITY TRAFFIC ENGINEER AT [traffic@wichita.gov](mailto:traffic@wichita.gov) BEFORE CONSTRUCTION CAN BEGIN. THE CONTRACTOR SHALL BE RESPONSIBLE FOR ALL TRAFFIC CONTROL MEASURES TO FACILITATE CONSTRUCTION. ALL CONSTRUCTION ZONE MARKINGS AND SIGNAGE SHALL CONFORM TO THE LATEST VERSION OF THE MANUAL ON UNIFORM TRAFFIC CONTROL DEVICES (MUTCD) AS PUBLISHED BY THE US DEPT. OF TRANSPORTATION. FEDERAL HIGHWAY ADMINISTRATION. ALL COSTS ASSOCIATED WITH CONSTRUCTION MARKINGS AND SIGNAGE SHALL BE THE CONTRACTOR'S RESPONSIBILITY.
- ALL ELEVATIONS SHOWN ARE NAVD 88.
- ALL AREAS DISTURBED DURING CONSTRUCTION THAT WILL NOT BE UNDER PROPOSED PAVEMENT SHALL BE RESTORED TO MATCH EXISTING CONDITIONS.
- ALL APPLICABLE FEES (TAP, EQUITY, IN LIEU OF & MAIN BENEFIT) MUST BE PAID BEFORE ANY CONNECTIONS CAN BE MADE ON THIS PROJECT. QUOTES CAN BE OBTAINED ON FEES BY CALLING 316-268-4555.
- CITY MAINTENANCE OF SANITARY SEWER MAINS ENDS AT THE LAST STRUCTURE WITHIN THE EASEMENT OR RIGHT-OF-WAY.
- FOLLOW THE LINK BELOW FOR CONSTRUCTION DETAILS ON SPECIFIC CITY OF WICHITA STANDARD DETAILS: <http://www.wichita.gov/PWU/Regulations.aspx>
- CONTRACTOR SHALL LIMIT THE EXTENT OF TRENCH OPEN OVERNIGHT AND WEEKENDS TO LESS THAN 50 FEET.
- EXISTING UTILITIES AND THEIR LOCATION, AS SHOWN ON THE PLANS REPRESENT THE BEST INFORMATION OBTAINABLE FOR DESIGN. LOCATION INFORMATION HAS BEEN OBTAINED FROM THE VARIOUS COMPANIES AND IS EITHER FROM COMPANY UTILITY DRAWINGS OR COMPANY PROVIDED FIELD LOCATIONS. THE PLAN LOCATIONS SHOWN ARE NOT GUARANTEED. ADDITIONAL EXISTING UTILITIES MAY ALSO BE ENCOUNTERED.
- A PORTION OF EXCESS EXCAVATED MATERIAL SHALL BE MOUNDED AROUND MANHOLES WHICH EXTEND MORE THAN ONE (1) FOOT ABOVE THE EXISTING GROUND. SUCH MOUND SHALL BE CONSTRUCTED WITH NEW DEVELOPMENT A SIX (6) FOOT DIAMETER FLAT TOP WITH 4 TO 1 SIDE SLOPES DOWN TO THE ORIGINAL GROUND. THE ELEVATION OF THE FLAT TOP OF THE MOUND SHALL BE 0.4 FOOT BELOW THE TOP OF THE MANHOLE.
- ALL STUBS AND PLUGGED PIPES SHALL BE LOCATED WITH GREEN PLASTIC TAPE IN THE SAME MANNER AS RISERS.
- CONNECTING TO EXISTING MANHOLES:  
PRIOR TO LAYING SEWER LINES USING EXISTING STUBS IN EXISTING MANHOLES, THE CONTRACTOR SHALL EXPOSE AND VERIFY THE ELEVATION, GRADE AND ALIGNMENT OF EXISTING STUBS AND NOTIFY THE ENGINEER OF ANY DEVIATION FROM THE PLANS. WHERE CONNECTION TO AN EXISTING MANHOLE THAT DOES NOT HAVE AN EXISTING STUB OR THE STUB IS UNUSABLE DUE TO ELEVATION GRADE OR ALIGNMENT, THE CONTRACTOR SHALL BORE CUT INTO EXISTING MANHOLE WALL TO MAKE CONNECTION USING APPROVED WATER STOP GASKET, AND RESHAPE THE EXISTING MANHOLE INVERT TO PROVIDE SMOOTH FLOW. THE COST TO CONNECTING TO EXISTING MANHOLES IS INCIDENTAL TO THE PROJECT.
- CONTRACTOR SHALL PROVIDE POSITIVE DRAINAGE AWAY FROM ALL MANHOLE COVERS.
- THE CONTRACTOR SHALL PREVENT ANY CONSTRUCTION DEBRIS FROM ENTERING THE EXISTING SANITARY SEWER DURING CONSTRUCTION.
- THE CONTRACTOR SHALL BE RESPONSIBLE FOR MAINTAINING CONTINUOUS FLOW OF SEWAGE THROUGH CONSTRUCTION. CONTRACTOR'S PROPOSED METHOD FOR MAINTAINING SEWAGE FLOW SHALL BE SUBMITTED AND APPROVED BY THE SEWER MAINTENANCE DIVISION (316-268-4073) PRIOR TO STARTING AND BY-PASSING OF SEWAGE FLOWS.
- ANY OVER EXCAVATION FROM MANHOLE AND PIPE REMOVAL SHALL BE BACKFILLED WITH AB-3 COMPACTED TO 90-95% ASTM D698.
- WORK DONE UNDER THIS PROJECT IS SUBJECT TO THE CITY OF WICHITA REQUIREMENTS FOR "CONSTRUCTION OF INFRASTRUCTURE IMPROVEMENTS BY PRIVATE CONTRACT". THE CONTRACTOR SHALL BE FAMILIAR AND COMPLY WITH ALL OF THE REQUIREMENTS, INCLUDING BONDING, INSPECTION, TESTING, NOTIFICATION, PROVIDING AS-BUILT DRAWINGS, PAYING FOR ALL NECESSARY CONNECTIONS, AND/OR STREET REPAIR FEES AND PROVIDING PIPE MATERIAL AND OTHER CERTIFICATIONS.
- THE CONTRACTOR SHALL PROTECT FROM DAMAGE AND SUPPORT EXISTING UTILITIES THROUGH CONSTRUCTION AS APPROVED BY THE UTILITY OWNER AND THE ENGINEER AT THE CONTRACTORS EXPENSE.
- JOHNNY STEVENS  
1223 N. ROCK ROAD, BLDG H, #200  
WICHITA, KS, 67206  
JOHNNY STEVENS  
(316) 636-2100

**Began: September 2024**  
**Ended: November 2024**

**D. Reinhardt - City of Wichita, Inspector**  
**Stubs**  
**Release Date: 12/18/2024**  
**apr 2/6/2025**

**Utility Contractor: McCullough Excavation.**  
**Inspected By: Baughman Company -**  
**Beau Gibler & Fred Smith**  
**As-Built Plans By: Fred Smith & Larry Powell**  
**11-20-2024**  
**As-Built Plans Revised: 12-02-2024**

**Manhole Structures = Wichita Concrete Pipe.**  
**Manhole Frames & Lids = Deeter.**  
**8" PVC Pipe = Sanderson Pipe.**  
**8" RJPVC Pipe = Westlake.**

**Baughman Job No.: 24-08-E886**

**PRIVATE SANITARY SEWER**

TO SERVE

**AIR CAPITAL FLIGHT LINE ADDITION**

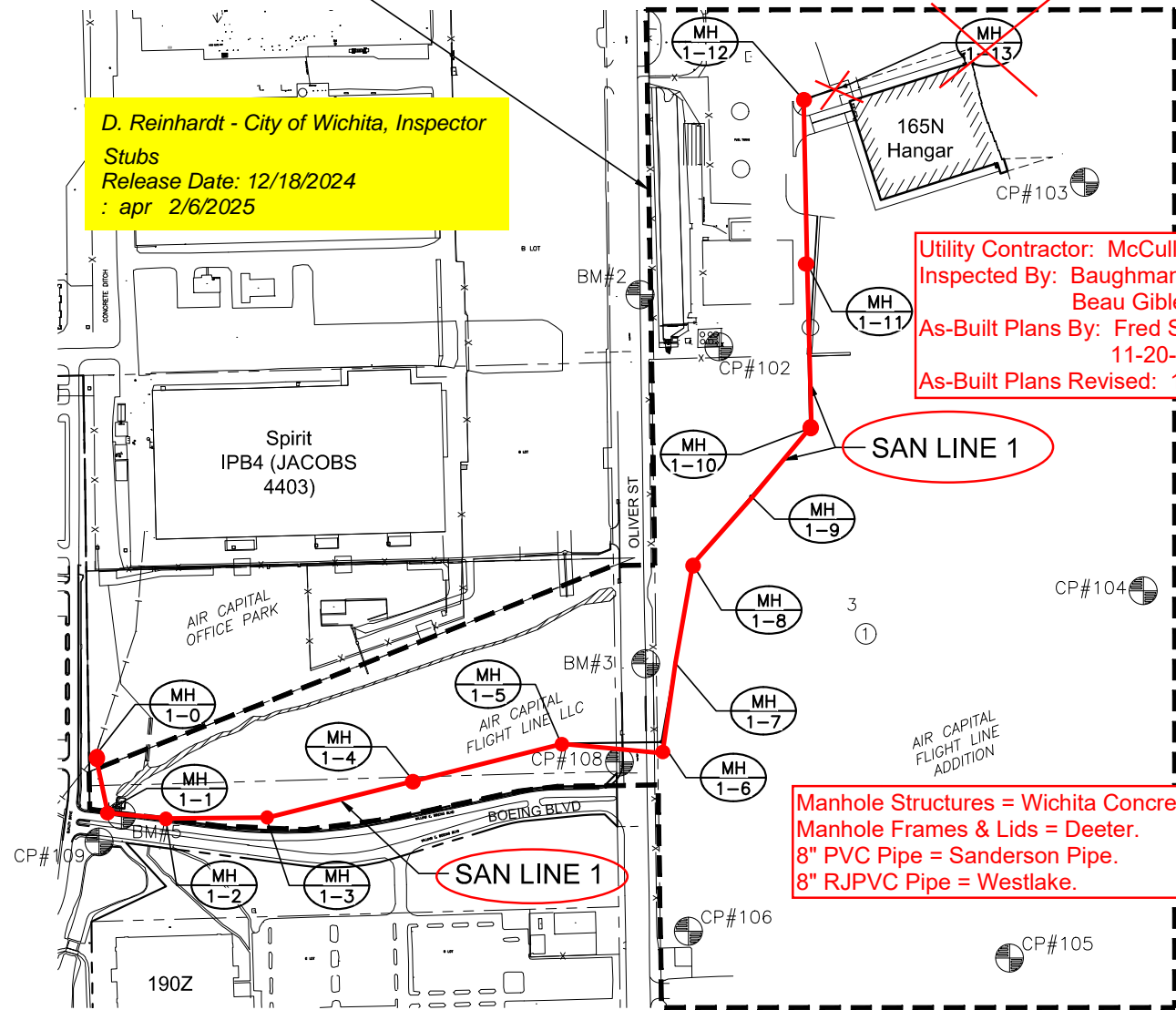
THE CITY OF WICHITA, KANSAS  
PAUL GUNZELMAN, P.E. - CITY ENGINEER

PROJECT NO. 2024-010139PPS

ORG CODE 53030982

**AS-BUILT PLANS**

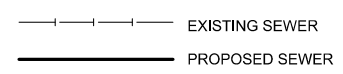
BENEFIT DISTRICT BOUNDARY



**CONTROL POINTS**

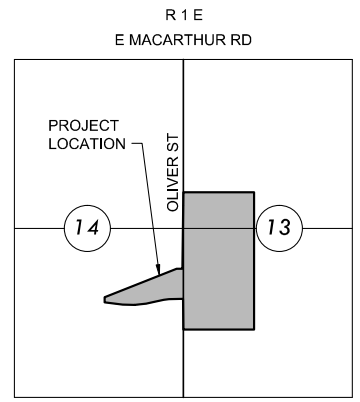
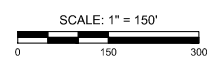
Point ID	N	E	EL	Point ID	N	E	EL
CP-101	1658475.509	1664514.542	1314.334	CP-107	1658781.194	1665808.679	1322.516
CP-102	1658349.337	1664485.065	1314.293	CP-108	1658905.799	1665724.461	1320.004
CP-103	1658413.914	1664583.014	1316.168	CP-109	1658929.585	1665882.289	1321.878
CP-104	1658413.481	1664539.585	1317.366	CP-110	1659548.477	1665985.906	1329.433
CP-105	1658385.722	1665080.046	1325.494	CP-111	1659557.644	1666100.502	1330.134

**LEGEND**



**SURVEY NOTE**

SURVEY PROVIDED BY ARMSTRONG LAND SURVEY, P.A. LOCATED AT 1601 E. HARRY, WICHITA, KS 67211 ON APRIL 5, 2022. CONTACT (316) 263-0082 WITH QUESTIONS REGARDING SURVEY ITEMS.



**VICINITY MAP**

**INDEX TO DRAWINGS**

SHEET NO.	DESCRIPTION
01	TITLE SHEET
02-05	SAN LINE 1 PLAN & PROFILES
06-07	SANITARY DETAILS
08-12	BMP DETAILS

**BENCHMARKS**

DATUM:  
THE HORIZONTAL DATUM IS BASED ON KANSAS SOUTH NAD83. COORDINATES SHOWN HAVE BEEN MODIFIED TO THE GROUND USING A COMBINED SCALE FACTOR OF 1.00011265. STATE PLAN GRID COORDINATES CAN BE CALCULATED BY MULTIPLYING THE SHOWN VALUES BY 0.999887350.

ALL ELEVATIONS ARE NAVD88 VERTICAL DATUM, GEOID12A.

BENCHMARKS:  
BM 1  
EL: 1338.64  
CHISELED SQUARE CUT ON THE TOP OF A CURB INLET ON THE EAST SIDE OF OLIVER AVE. APPROXIMATELY 40 FEET EAST AND 375 FEET SOUTH OF THE NW CORNER OF SEC 13, T28S, R1E.

BM 2  
EL: 1328.53  
CHISELED SQUARE CUT ON THE TOP OF A CURB INLET ON THE EAST SIDE OF OLIVER AVE. APPROXIMATELY 25 FEET EAST AND 160 FEET NORTH OF THE W/4 CORNER OF SEC 13, T28S, R1E.

BM 3  
EL: 1322.52  
CHISELED SQUARE CUT ON THE TOP OF A CURB INLET ON THE EAST SIDE OF OLIVER AVE. APPROXIMATELY 25 FEET EAST AND 730 FEET SOUTH OF THE W/4 CORNER OF SEC 13, T28S, R1E.

BM 4  
EL: 1335.37  
CHISELED SQUARE CUT ON THE TOP OF A CURB AT THE SOUTH END OF A PARKING LOT ENTRANCE ON THE WEST SIDE OF OLIVER AVE. APPROXIMATELY 35 FEET WEST AND 760 FEET NORTH OF THE SW CORNER OF SEC 13, T28S, R1E.

BM 5  
EL: 1317.37  
CHISELED SQUARE CUT ON THE TOP OF A CURB INLET ON THE NORTH SIDE OF A PRIVATE ROAD "WILLIAM E BOEING BLVD". APPROXIMATELY 1250 FEET WEST AND 1070 FEET SOUTH OF THE W/4 CORNER OF SEC 13, T28S, R1E.

APPROVED AS NOTED BY WICHITA PUBLIC WORKS ENGINEERING DIVISION

Engineering approved by Shawn Mellies on 07/19/24

Utilities approved by Scott Macey on 07/19/24

**NOTE TO CONTRACTORS**

Public Property:  
Inspection and testing for this project is to be provided by a Licensed Consulting Engineering Firm under contract with the Owner/Developer. Said inspection to be in accordance with the City of Wichita standard construction engineering practices and certified by a Licensed Professional Engineer in the state of Kansas. No work shall be performed by the Contractor without such inspection nor shall any work be commenced without written authorization by City Engineering. All Construction and Materials shall comply with the current City of Wichita Specifications and Standards and Special Provisions. (on file and available at Wichita.gov).

An approved copy of these plans signed by City staff is required on-site.

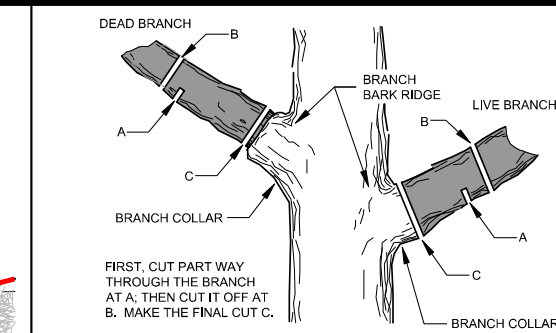
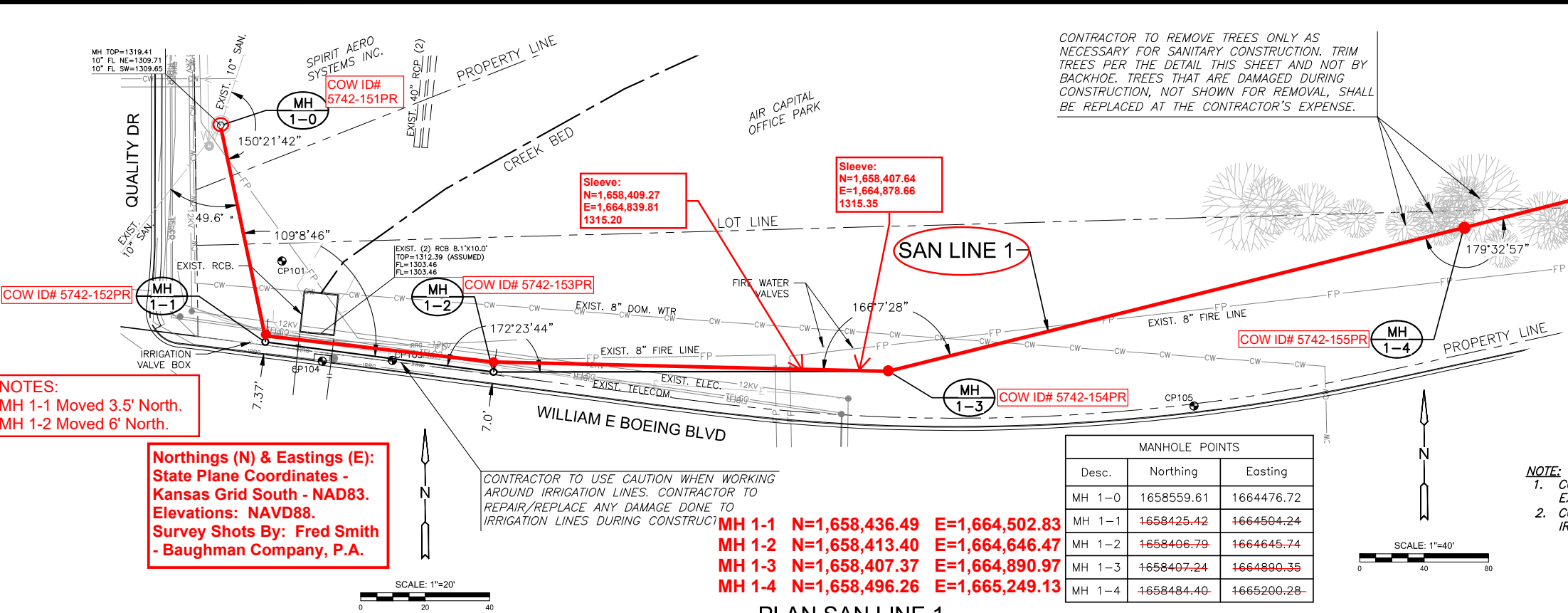


**SANITARY SEWER PLANS FOR**  
**AIR CAPITAL FLIGHT LINE ADDITION**  
**WICHITA, KANSAS**

TITLE SHEET		
PROJECT NO.	2024-010139PPS	
SCALE	1"=150'	
DRAWN	DESIGNED	CHECKED
BKS	BKS	MAB
SHEET NO. CU001-S 01 OF 12		

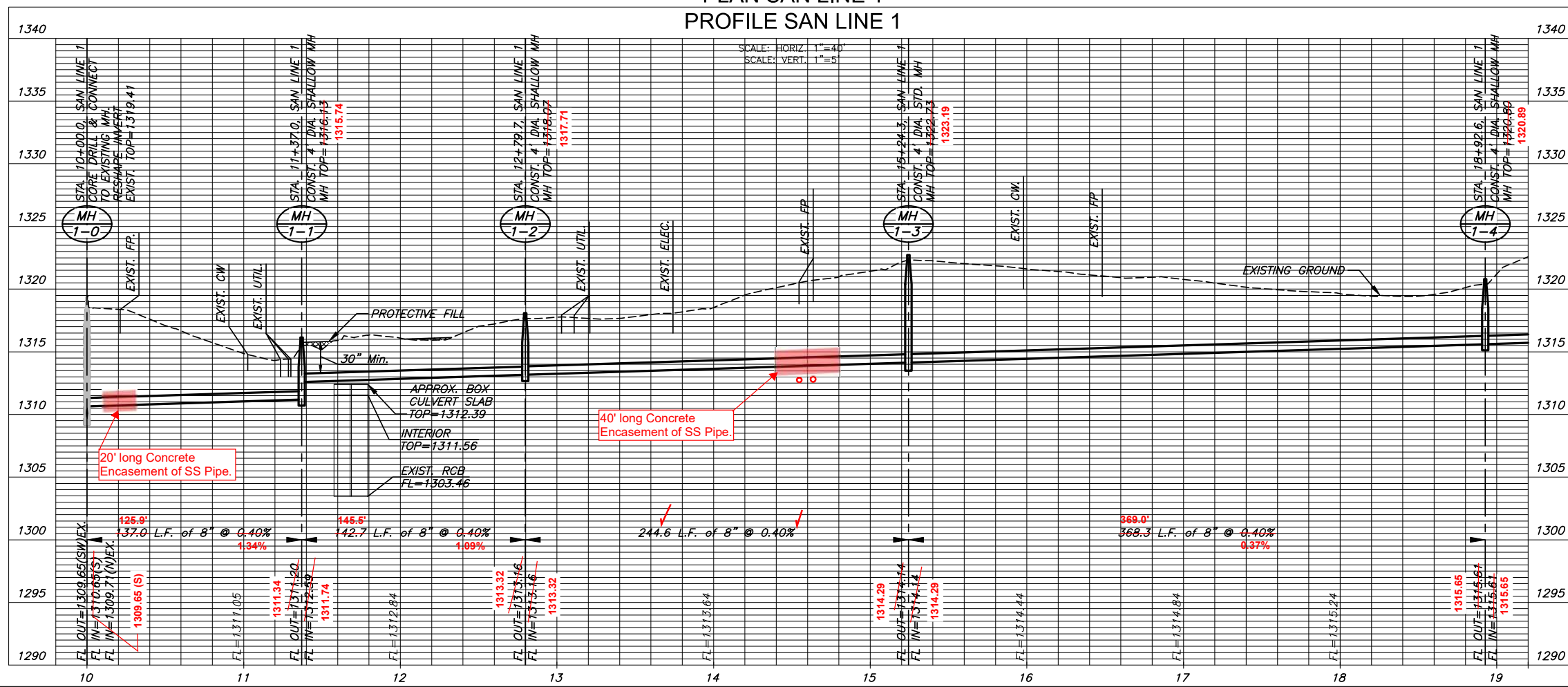
PLOTTED FILE: J:\PROJECTS\2024\010139PPS\CAD\SSHTS\05 CIVIL\SAN\SS10897\_CU101-S.DWG

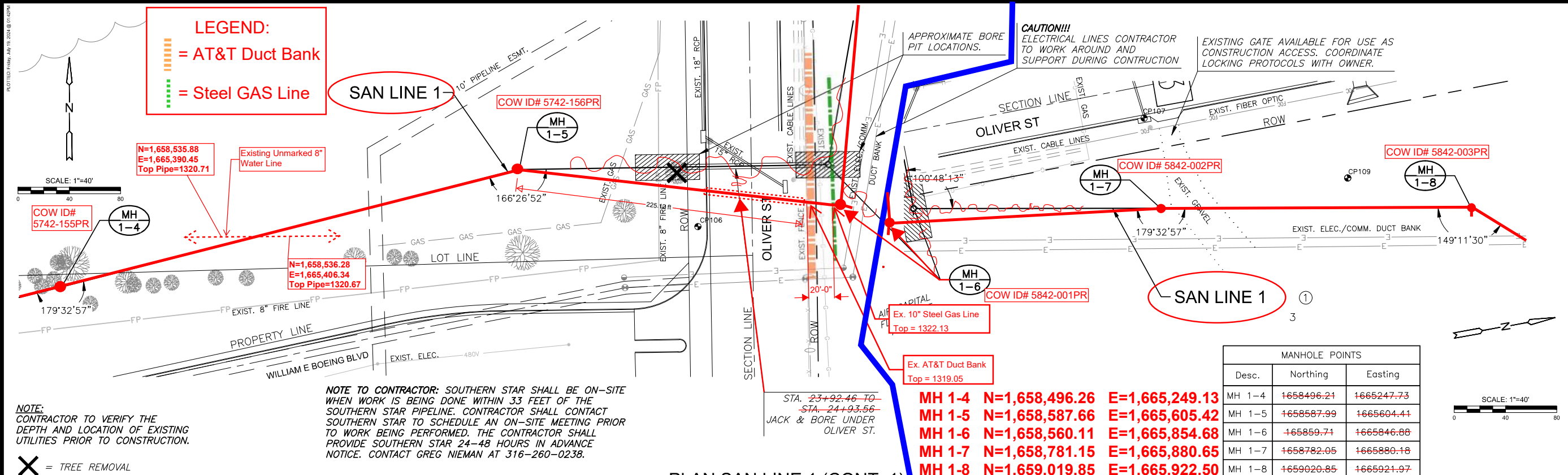
J:\PROJECTS\2024\010139PPS\CAD\SSHTS\05 CIVIL\SAN\SS10897\_CU101-S.DWG



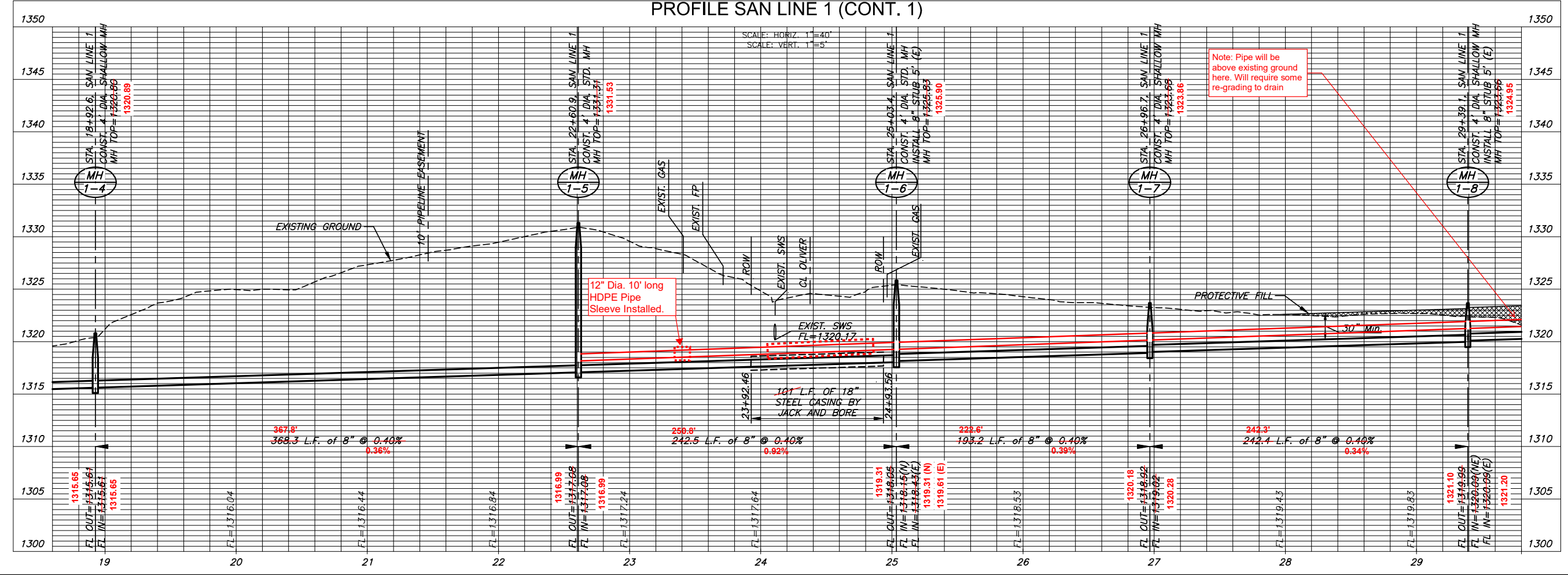
SANITARY SEWER PLANS FOR  
**AIR CAPITAL FLIGHT LINE ADDITION**  
 WICHITA, KANSAS

SAN LINE 1		
PROJECT NO.	2024-010139PPS	
SCALE	1"=40'	
DRAWN	DESIGNED	CHECKED
BKS	BKS	MAB
ISSUED FOR CONSTRUCTION	07/19/24	
NO.	REVISION	DATE
SHEET NO. CU101-S		
02 OF 12		





PLAN SAN LINE 1 (CONT. 1)  
 PROFILE SAN LINE 1 (CONT. 1)



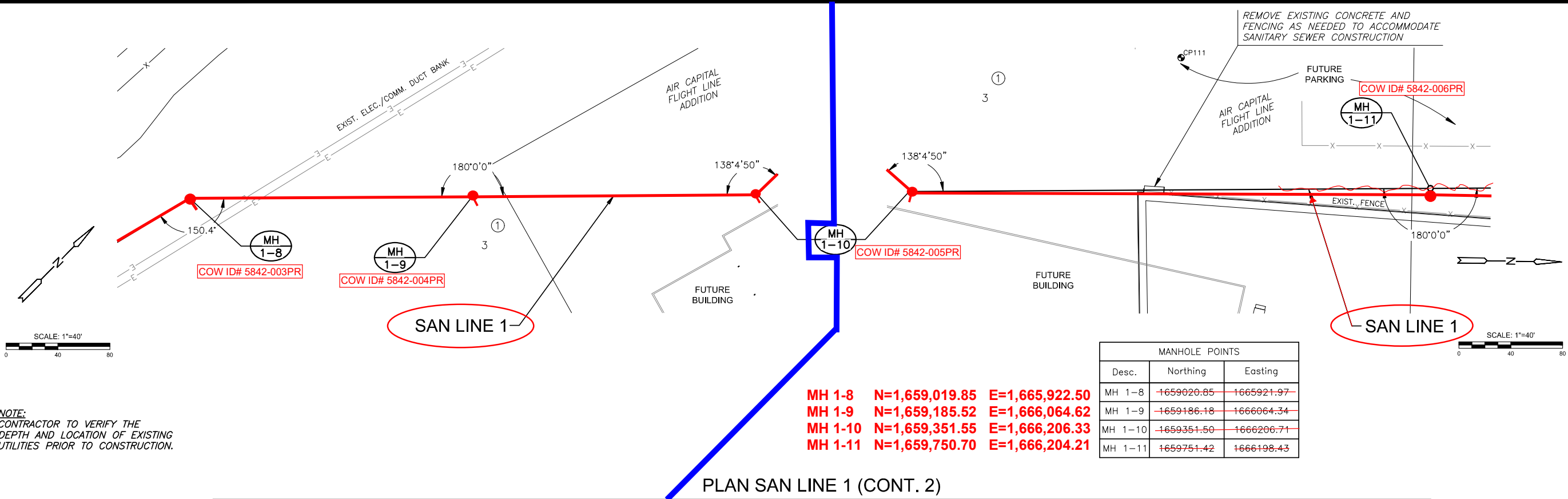
SANITARY SEWER PLANS FOR  
**AIR CAPITAL FLIGHT LINE ADDITION**  
 WICHITA, KANSAS

SAN LINE 1 (CONT. 1)

PROJECT NO.	2024-010139PPS	
SCALE	1"=40'	
DRAWN	DESIGNED	CHECKED
BKS	BKS	MAB
ISSUED FOR CONSTRUCTION	07/19/24	
NO.	REVISION	DATE
SHEET NO.	CU102-S	03 OF 12

PLOTTED FILE: J:\PROJECTS\2024\01010887\_CAF\_SPRINT MILITARY\00 210887 CAD\SHS1905 CIVIL\SAN\PPS\210887\_CU103-S.DWG

J:\PROJECTS\2024\01010887\_CAF\_SPRINT MILITARY\00 210887 CAD\SHS1905 CIVIL\SAN\PPS\210887\_CU103-S.DWG

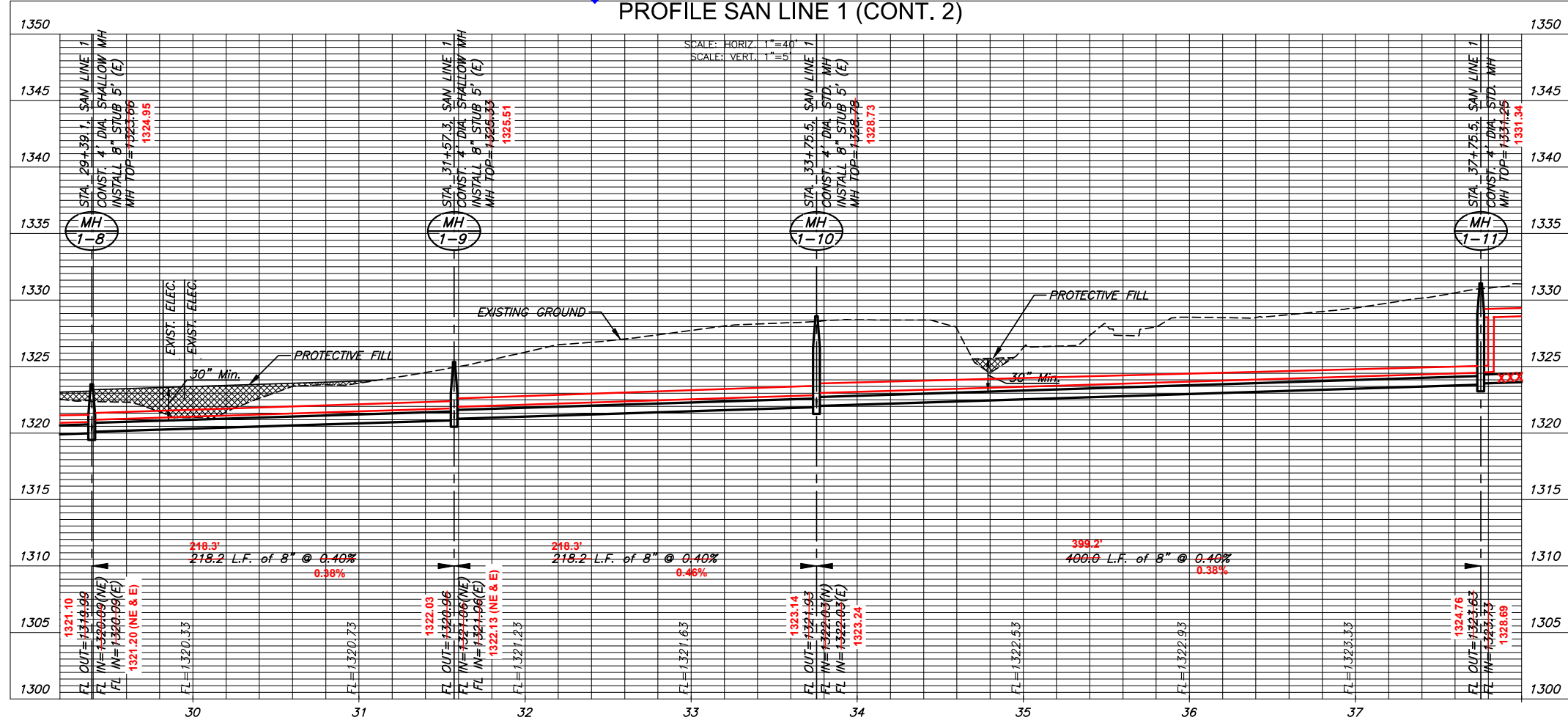


MANHOLE POINTS		
Desc.	Northing	Easting
MH 1-8	1659020.85	1665921.97
MH 1-9	1659186.18	1666064.34
MH 1-10	1659351.50	1666206.71
MH 1-11	1659751.42	1666198.43

MH 1-8 N=1,659,019.85 E=1,665,922.50  
 MH 1-9 N=1,659,185.52 E=1,666,064.62  
 MH 1-10 N=1,659,351.55 E=1,666,206.33  
 MH 1-11 N=1,659,750.70 E=1,666,204.21

NOTE:  
 CONTRACTOR TO VERIFY THE DEPTH AND LOCATION OF EXISTING UTILITIES PRIOR TO CONSTRUCTION.

PLAN SAN LINE 1 (CONT. 2)  
 PROFILE SAN LINE 1 (CONT. 2)



SANITARY SEWER PLANS FOR

# AIR CAPITAL FLIGHT LINE ADDITION

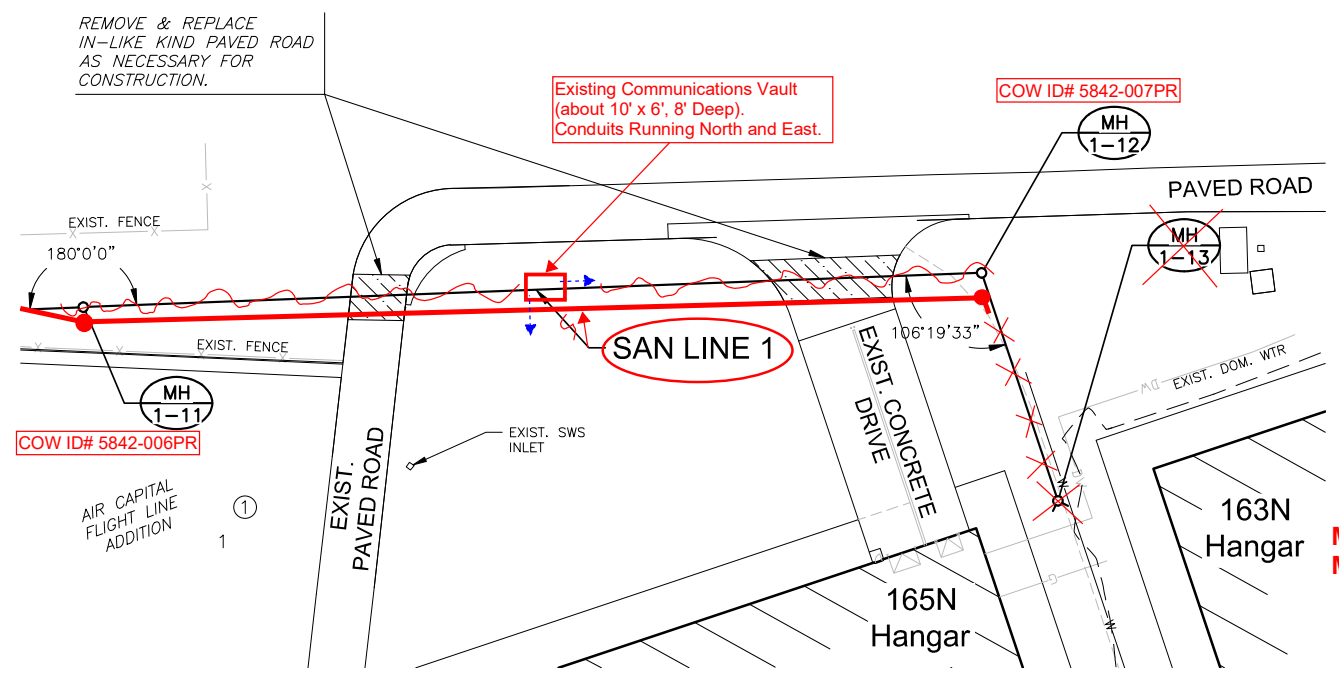
WICHITA, KANSAS

SAN LINE 1 (CONT. 2)

PROJECT NO.	2024-010139PPS	
SCALE	1"=40'	
DRAWN	DESIGNED	CHECKED
BKS	BKS	MAB
ISSUED FOR CONSTRUCTION	07/19/24	
NO.	REVISION	DATE
SHEET NO.	CU103-S	04 OF 12

PLOTTED FROM: J:\PROJECTS\2024\01010867\_CAF\_SANITARY\2024\01010867\_CAF\_SANITARY\DWG\_CU104-S.DWG

J:\PROJECTS\2024\01010867\_CAF\_SANITARY\2024\01010867\_CAF\_SANITARY\DWG\_CU104-S.DWG



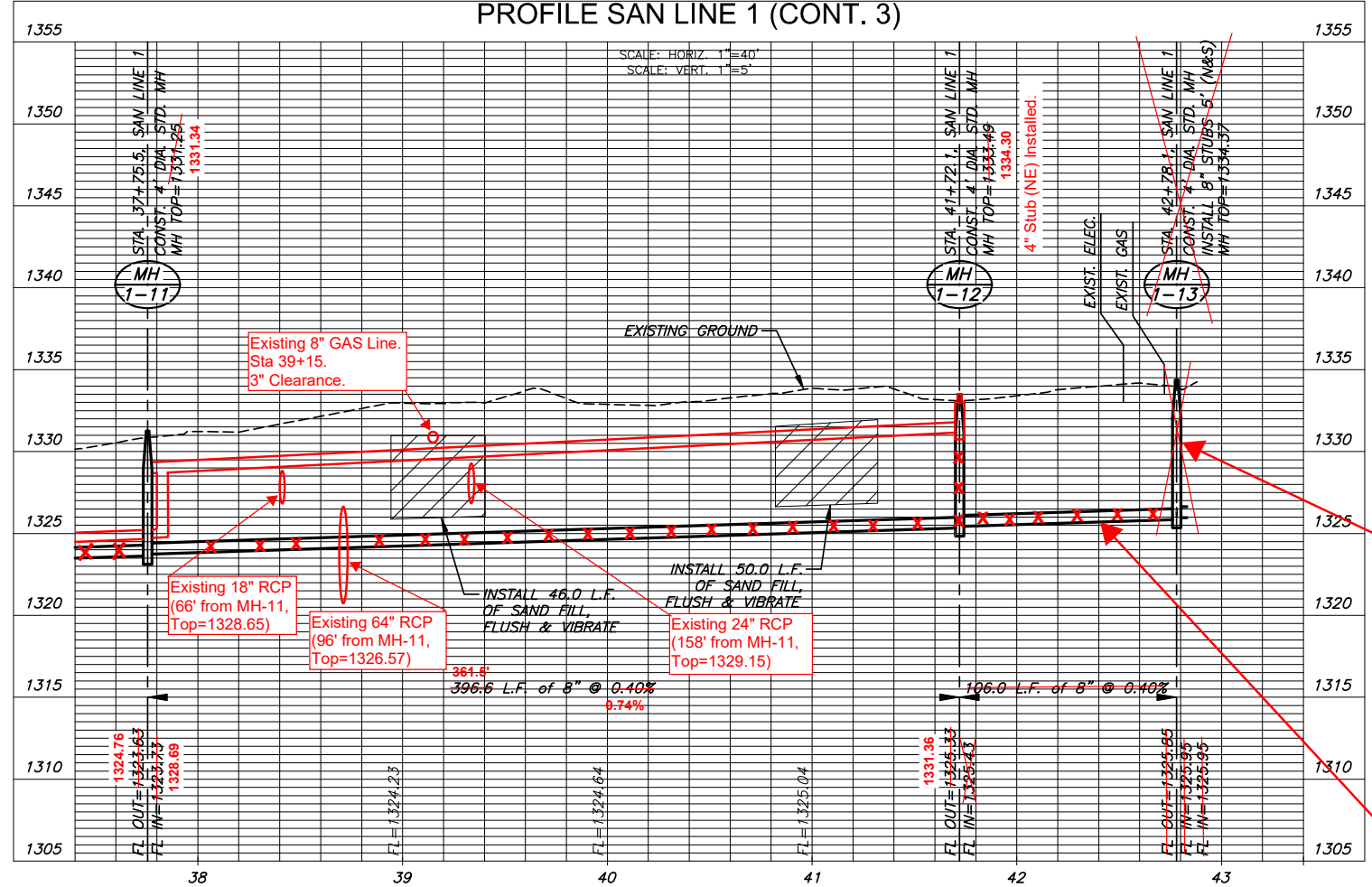
MANHOLE POINTS		
Desc.	Northing	Easting
MH 1-11	1659751.42	1666198.43
MH 1-12	1660147.93	1666190.22
<del>MH 1-13</del>	<del>1660179.84</del>	<del>1666291.35</del>

MH 1-11 N=1,659,750.71 E=1,666,204.21  
 MH 1-12 N=1,660,112.15 E=1,666,201.14



**NOTE:**  
 CONTRACTOR TO VERIFY THE DEPTH AND LOCATION OF EXISTING UTILITIES PRIOR TO CONSTRUCTION.

PLAN SAN LINE 1 (CONT. 3)  
 PROFILE SAN LINE 1 (CONT. 3)



**NOTE:**  
 Proposed Sanitary Sewer Line from STA 41+72.1 to 42+78.1 AND SS Manhole @ Sta 42+78.1 was NOT installed. This was due to acceptable SS Pipe Slope unobtainable, due to SS Pipe Flowline change @ Sta 41+72.1.



SANITARY SEWER PLANS FOR  
**AIR CAPITAL FLIGHT LINE ADDITION**  
 WICHITA, KANSAS

SAN LINE 1 (CONT. 3)		
PROJECT NO.	2024-010139PPS	
SCALE	1"=40'	
DRAWN	DESIGNED	CHECKED
BKS	BKS	MAB
ISSUED FOR CONSTRUCTION	07/19/24	
NO.	REVISION	DATE
SHEET NO. CU104-S		
05 OF 12		