

GENERAL NOTES:

- The Contractor shall comply with all applicable safety regulations. All construction shall be completed following current City Standard Specifications and Special Provisions.
- Contractor will be required to provide notice to utility companies a minimum of seventy-two (72) hours prior to any excavation, as follows:
 Kansas One-Call 687-2470
 The Contractor must notify the following in case of an emergency:
 AT&T 1-800-246-8464
 Black Hills Energy 1-800-694-8989
 City of Wichita Water & Sewer 1-316-219-8921
 City of Wichita Stormwater 1-316-268-4090
 City of Wichita Traffic 1-316-268-4034
 Cox Communications 1-888-249-3530
 Kansas Gas Service 1-888-492-4950
 Evergy 1-800-544-4857
- Utility service lines, poles, etc. are to be adjusted as necessary by others prior to construction unless the plans specifically call for their adjustment by the Contractor or unless the plans specifically identify a utility to be adjusted by its owner during construction. Existing utilities and their location, as shown on the plans, represent the best information obtainable for design. The Contractor will be required to work around existing utilities within the right-of-way which do not conflict with proposed construction.
- Rubble from the removal of miscellaneous structures and excess excavation which is to be wasted shall be disposed of on sites to be provided by the Contractor. These sites shall be approved by the Engineer as to suitability, appearance and site location. Locations, in the opinion of the Engineer, that will leave an unsightly appearance will not be approved. All disposal sites must be approved by the Kansas Department of Health and Environment. Material either stockpiled or disposed of in a flood plain will require a Kansas State Board of Agriculture permit. Any material dumped in waters of the United States or wetlands is subject to U.S. Corps of Engineers permitting regulations. Any material buried or stockpiled beyond approved construction limits will require additional archaeological investigations unless buried in a previously approved borrow location.
- Trees and shrubs in public right-of-way which are in direct conflict with proposed new construction shall be removed by the Contractor with the City Engineer's approval. Trees and shrubs which are not in direct conflict with proposed new construction shall be saved and protected from damage.
- The Contractor shall give all property owners and/or tenants of developed property abutting the construction of this project a minimum of ten (10) days notice prior to start of construction.
- The Contractor shall be responsible for preserving property irons. The Contractor will be required to re-establish any property irons which are damaged or destroyed by his construction operations. Such irons shall be re-established by a licensed land surveyor in accordance with state laws.
- The Engineering Division shall field locate water valve one time during construction when requested by the Contractor. It shall be the Contractor's responsibility to preserve such field locations during the construction process. Water valves, valve boxes or fire hydrants damaged during construction shall be repaired by Contractor at his own expense. Valve boxes and water meters within the project limits shall be adjusted to match field grades by the contractor.
- The Contractor shall notify the consultant engineer and Dawnita Reinhardt at 316-650-0740 with the City of Wichita with the anticipated construction start date and notify them of project completion. Staking and inspection for this project will be the responsibility of the Contractor.
- If traffic will be impacted by construction, a traffic control plan must be submitted and approved by the City Traffic Engineer at traffic@wichita.gov before construction can begin. The Contractor shall be responsible for all traffic control measures to facilitate construction. All construction zone markings and signage shall conform to the latest version of Manual on Uniform Traffic Control Devices (MUTCD) as published by the US Dept. of Transportation, Federal Highway Administration. All costs associated with construction markings and signage shall be the Contractors responsibility.
- All elevations shown are NAVD88.
- All areas disturbed during construction that will not be under proposed pavement shall be restored to match existing conditions per City specifications.
- All applicable fees (tap, equity, in lieu of & main benefit) must be paid before any connections can be made on this project. Quotes can be obtained on fees by calling 316-268-4555.
- All stubs and capped pipes shall be located with green plastic tape in the same manner as risers.
- Contractor shall provide positive drainage away from all manhole covers.
- The Contractor shall prevent any construction debris from entering the existing sanitary sewer during construction.
- The Contractor shall be responsible for maintaining continuous flow of sewage through construction. Contractors proposed method for maintaining sewage flow shall be submitted and approved by the Sewer Maintenance Division (316-268-4073) prior to starting and by-passing of sewage flows.
- Any over excavation from manhole and pipe removal shall be backfilled with AB-3 compacted to 90-95% ASTM D698.
- The Contractor shall protect from damage and support existing utilities through construction as approved by the utility owner and the Engineer at the contractor's expense.
- All of 9th St. N. shall be seeded and mulched as follows:
 Seed -- Kansas Premium Fescue Blend; 8 lbs. PLS/1000 Sq. Ft.
 Annual Rye grass; 3 lbs./1000 Sq. Ft.
 Fertilizer -- 12-24-12 Ratio; 45 Lbs./Ac.
 Mulch -- 2 Tons Prairie Hay/Ac.
 An additional bid item for "Seeding, Temporary" has been included and may be used at the discretion of the design engineer. Temporary seed shall be Annual Rye at 5 lbs./1000 Sq. Ft. unless otherwise noted and shall be planted when permanent seed or sod cannot be used due to seasonal limitations. If the "Seeding, Temporary" bid item is not used, 100% of the pay item will be deducted from the contract. All costs associated with temporary seeding including mobilization, preparation of ground, seeding, etc., shall be included in the L.S. bid item "Seeding, Temporary".
- All existing and proposed erosion control measures including silt fencing, erosion control mat, straw bales, inlet barriers, and const. entrance shall be maintained throughout construction by the contractor and until project is accepted by the City of Wichita. The on-site engineer shall complete weekly reports on the status of erosion control measures. The contractor shall be required to comply with maintenance and/or replacement of erosion control measures as determined by the on-site engineer until project is accepted by City of Wichita. Maintenance and/or replacement of erosion control measures to be paid by L.S. bid item "Maintain Existing BMPs".
- The Contractor shall not begin work on the project until the Project Inspector is assigned and on site. Any work completed without inspection will be required to be uncovered for inspection at the Contractor's expense.

Benchmarks

BM #1: "X" Chiseled West of Box Culvert South Side of 9th Street, 100' west and 12' north of the NW corner of Lot 1, Block A, Edgemoor Park Branch Library Addition.
 Elev. = 1376.89 (NAVD 88)

BM #2: "□" Chiseled on NW Corner of the South Curb Inlet, at the end of Jaqueline St., 5' west and 38' south of the SE corner of Lot 1, Block A, Edgemoor Park Branch Library Addition.
 Elev. = 1381.24 (NAVD 88)

CONTROL POINT:
N = 375,858.00 E = 1,7567,468.63
ELEV = 1381.24

AS-BUILT PLANS

SANITARY SEWER IMPROVEMENTS

to serve

WICHITA PUBLIC LIBRARY

ROCKWELL BRANCH

5939 E. 9TH ST. N.
 CITY OF WICHITA, KANSAS

Paul Gunzelman, P.E. City Engineer
 2024-022833PPS
 (53030982)

Utility Contractor = McCullough Excavating
 Inspector = Fred Smith -
 Baughman Company, P.A.

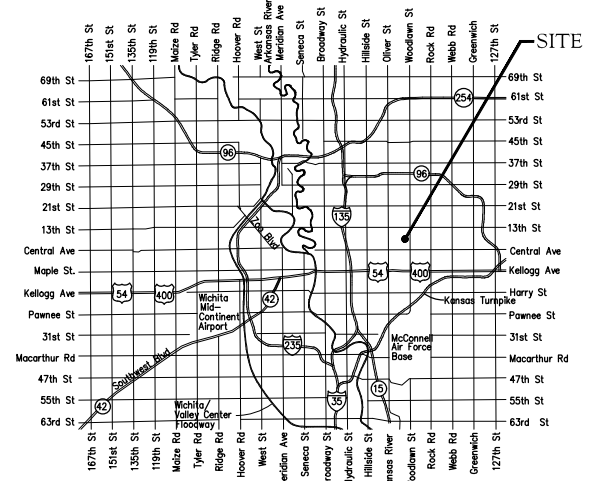
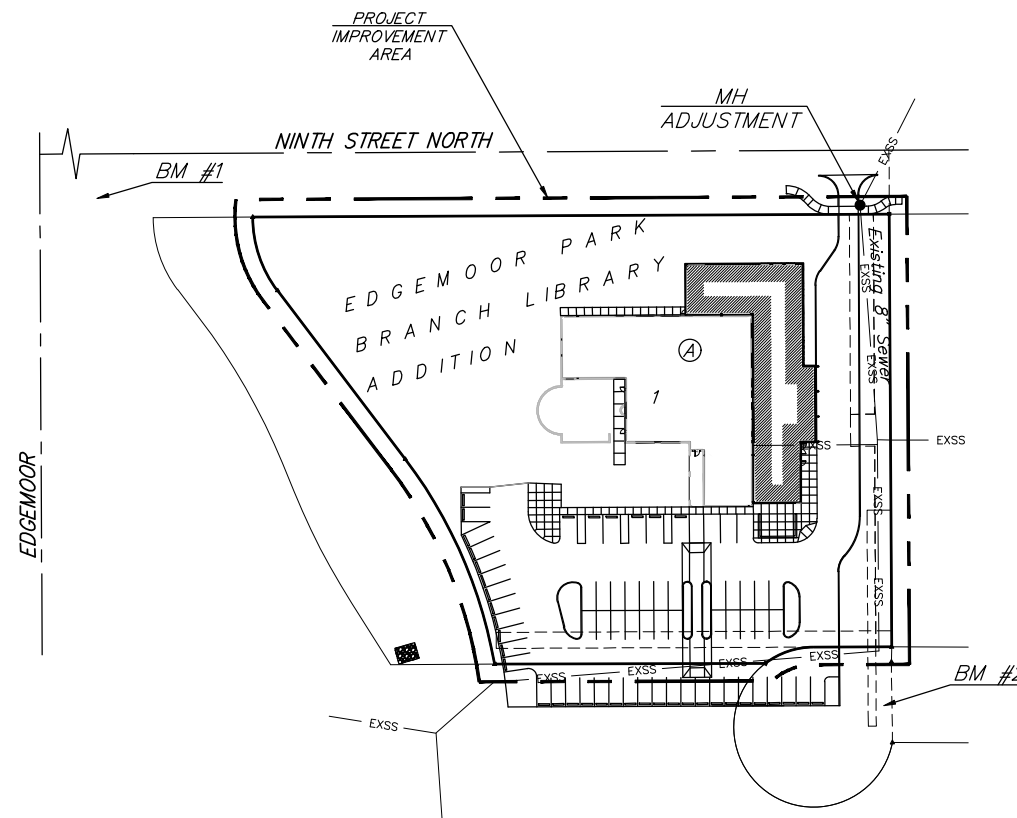
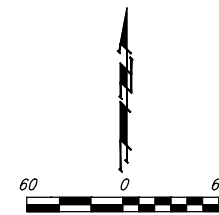
As-Built Plans = FES & Larry Powell
 12-09-2024

Baughman Job No.: 24-10-E946

D. Reinhardt - City of Wichita, Inspector
 Release Date: 12/20/2024
 : apr 2/6/2025

Sheet Index

Title Sheet	1
Manhole Adjustment	2
Erosion Control/Grading Plan	3
Precast SS Manhole Detail	4
Manhole Frame & Cover Detail	5
Erosion Control BMP Details	6-10
Copy of Plat	11



Vicinity Map

Construction Began = November 2024

Construction End = November 2024

APPROVED AS NOTED
 BY WICHITA PUBLIC WORKS
 ENGINEERING DIVISION

Engineering approved by Shawn Mellies on 09.13.24

Utilities approved by Scott Macey on 09.13.24

NOTE TO CONTRACTORS

Inspection and testing for this project is to be provided by a Licensed Consulting Engineering Firm under contract with the Owner/Developer. Said inspection to be in accordance with the City of Wichita standard construction engineering practices and certified by a Licensed Professional Engineer in the state of Kansas. No work shall be performed by the Contractor without such inspection nor shall any work be commenced without written authorization by City Engineering. All Construction and Materials shall comply with the current City of Wichita Specifications and Standards and Special Provisions (on file and available at Wichita.gov).

An approved copy of these plans signed by City staff are required on-site.



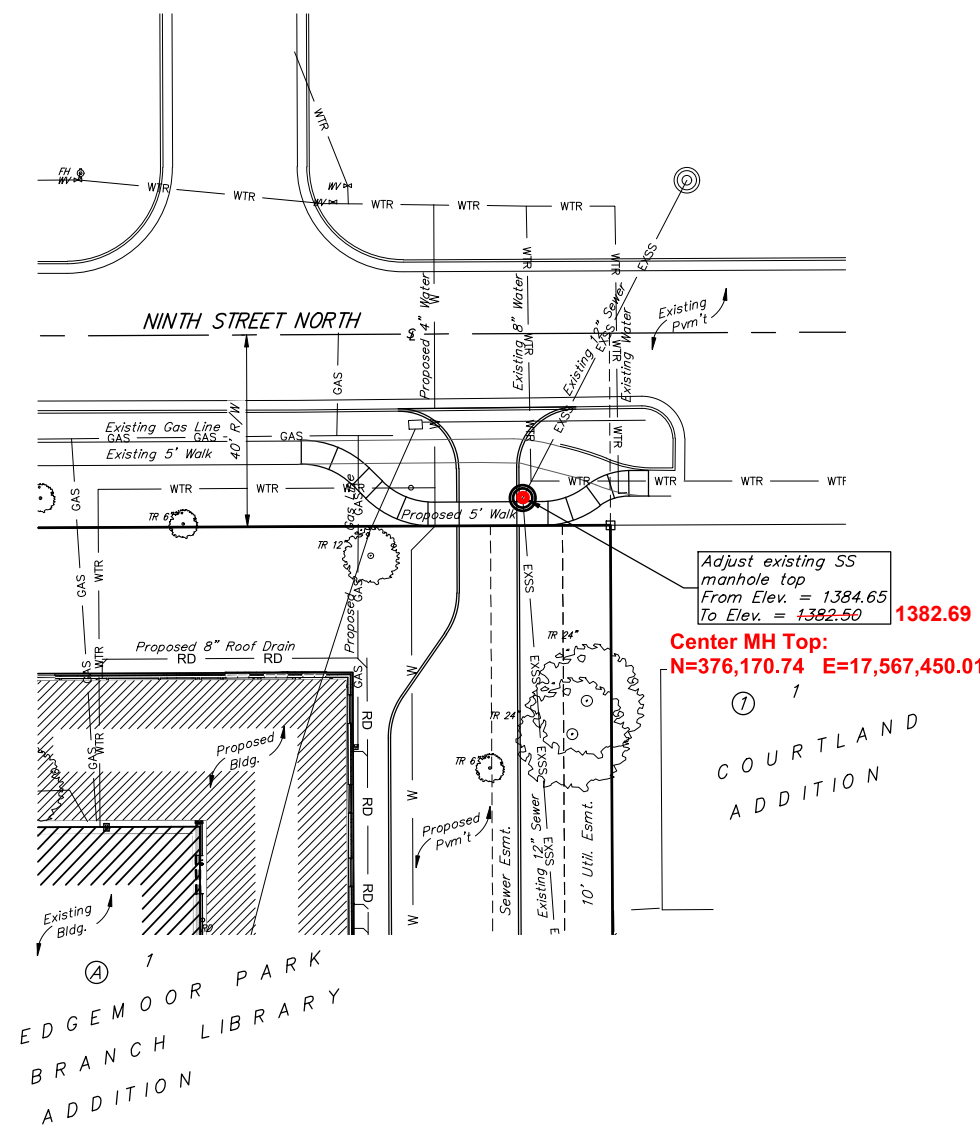
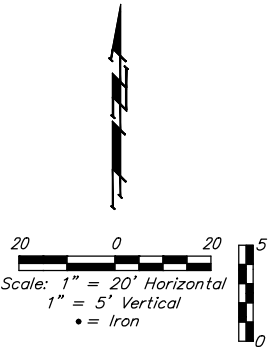
September 18, 2024



BENCHMARKS:

BM #1: "X" Chiseled West of Box Culvert South Side of 9th Street, 100' west and 12' north of the NW corner of Lot 1, Block A, Edgemoor Park Branch Library Addition.
Elev. = 1376.89 (NAVD 88)

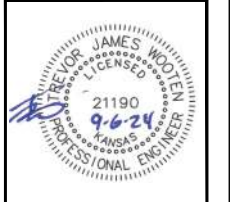
BM #2: "□" Chiseled on NW Corner of the South Curb Inlet, at the end of Jaqueline St., 5' west and 38' south of the SE corner of Lot 1, Block A, Edgemoor Park Branch Library Addition.
Elev. = 1381.24 (NAVD 88)



Contractor to verify depth and location of existing utilities. Contractor to relocate any existing utilities as necessary for construction.

Contact utility companies 3 weeks prior to construction to coordinate temporary removal/replacement.
Heide Bryan, Evergy, (316) 261-6354
Shannon Brinkmeyer, AT&T (316) 268-2931
Travis Taylor, Cox Comm., Travis.taylor@cox.com

Northings (N) and Eastings (E): Kansas Regional Coordinate System, Wichita (KRCS, Wichita).
Elevation: NAVD88.
Survey GPS Shots By: Fred Smith - Baughman Company, P.A.



BAUGHMAN COMPANY
315 Ellis St.
Wichita, KS 67211
316-262-7271
BaughmanCo.com

WICHITA PUBLIC LIBRARY
ROCKWELL BRANCH

MANHOLE ADJUSTMENT

SANITARY SEWER IMPROVEMENTS

PROJECT NUMBER:
24-04-E757

DESIGN: TJW DRAWN: TMS
DATE: September 6, 2024

SHEET **2** OF **11**

File: E:\Projects\Wichita Public Libraries (24-04-E757)\Rockwell\Phase 1\PPSPPS.dwg