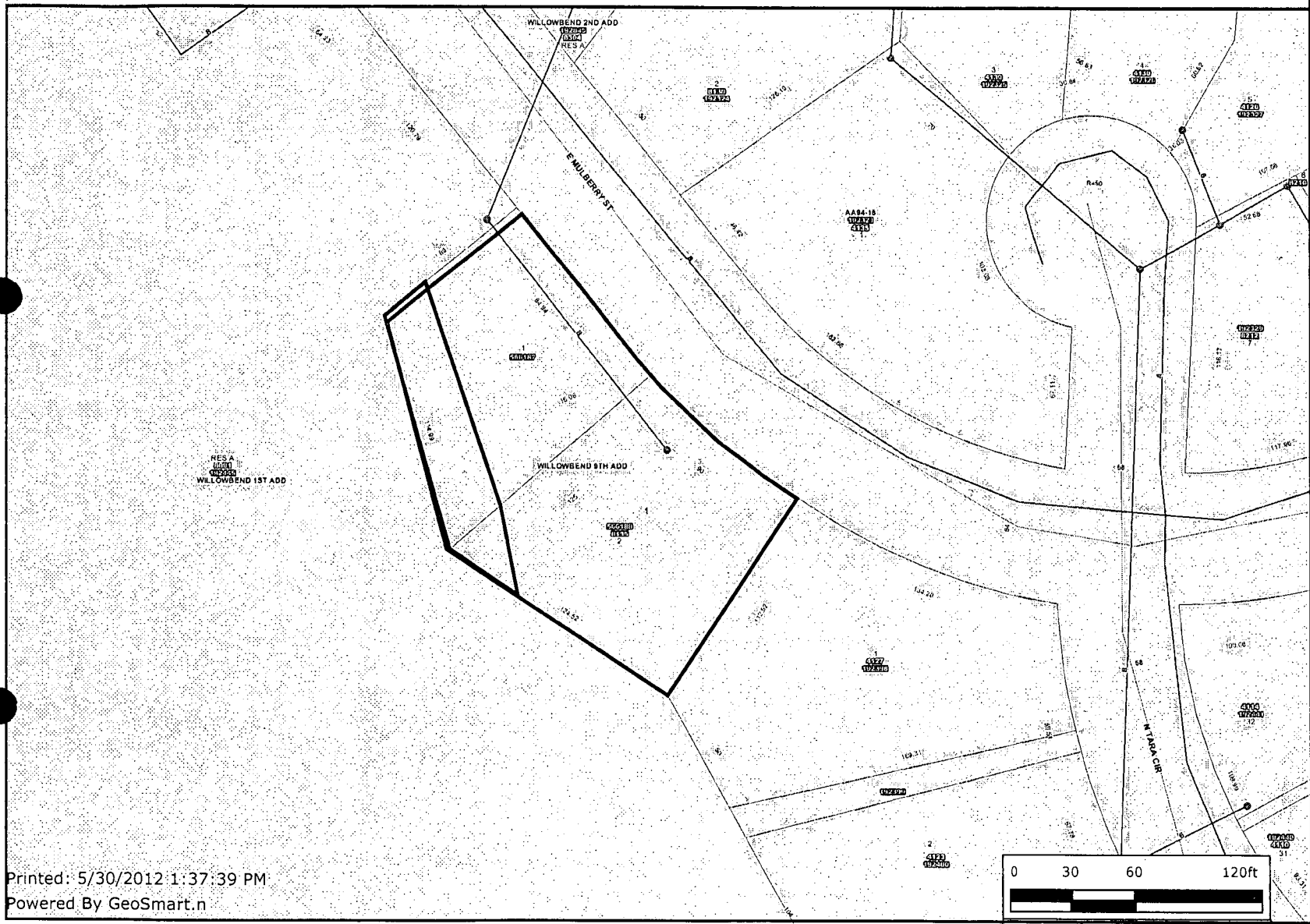


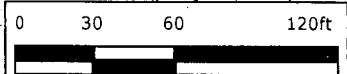


water and sewer

- Sewer Manholes
- Property Parcels
- Lot Block
- Sewer Lines
- Water Lines Schematic
- Roads**
- State Highway
- US Federal Highway
- Interstate
- KTA
- Arterial
- Collector
- Minor
- Ramp
- Case Tracking



Printed: 5/30/2012 1:37:39 PM
 Powered By GeoSmart.n

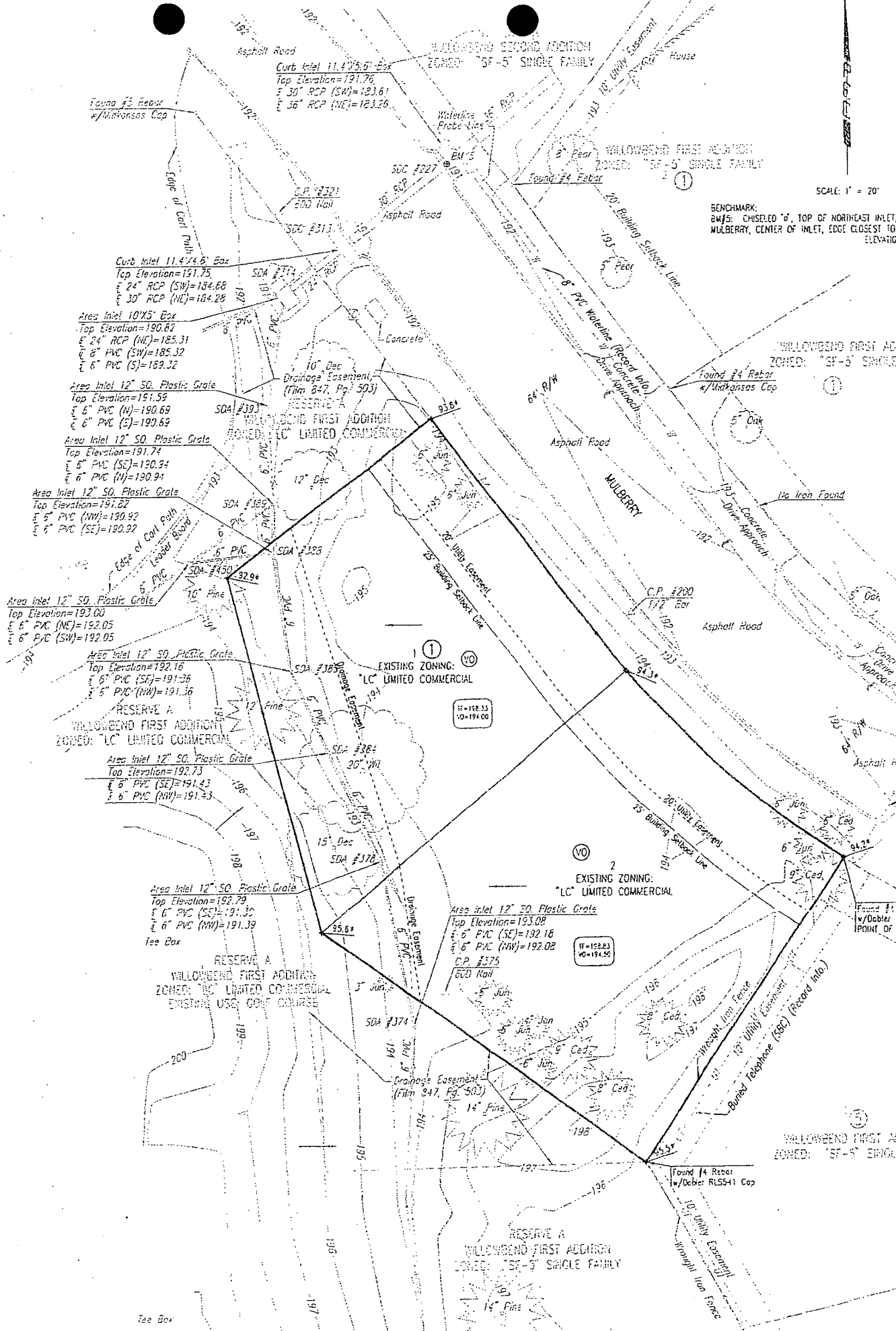


Every reasonable effort has been made to assure the accuracy of the maps and associated data provided herein. This information is provided with the understanding that the data are susceptible to a degree of error, and conclusions drawn from such information are the responsibility of the reader. The City of Wichita makes no warranty, representation or guaranty as to the content, accuracy, timeliness or completeness of any of the data provided herein. Some data provided here and used for the preparation of these maps has been obtained from public records not created or maintained by the City of Wichita. The City of Wichita shall assume no liability for any decisions made or actions taken or not taken by the reader in reliance upon any information or data furnished hereunder. The user should consult with the appropriate departmental staff member, e.g. Planning, Parks & Recreation, etc. to confirm the accuracy of information appearing in the visual presentations accessible through these web pages.



SCALE: 1" = 20'

BENCHMARK:
BM#5: CHISELED "G", TOP OF NORTHEAST INLET,
MULBERRY, CENTER OF INLET, EDGE CLOSEST TO 1
ELEVATION



WILLOWBEND SECOND ADDITION
ZONED "SF-5" SINGLE FAMILY

Curb Inlet 11.4'x5.5' Box
Top Elevation=191.76
5' 30" RCP (SW)=183.61
5' 36" RCP (NE)=183.26

Curb Inlet 11.4'x4.6' Box
Top Elevation=191.75
5' 24" RCP (SW)=184.68
5' 30" RCP (NE)=184.28

Area Inlet 10'x5' Box
Top Elevation=190.82
5' 24" RCP (NE)=185.31
5' 8" PVC (SW)=185.32
5' 6" PVC (S)=189.32

Area Inlet 12" SQ. Plastic Grate
Top Elevation=191.59
5' 6" PVC (W)=190.69
5' 6" PVC (S)=190.69

Area Inlet 12" SQ. Plastic Grate
Top Elevation=191.74
5' 5" PVC (SE)=190.94
5' 6" PVC (W)=190.94

Area Inlet 12" SQ. Plastic Grate
Top Elevation=191.22
5' 5" PVC (NW)=190.92
5' 5" PVC (SE)=190.92

Area Inlet 12" SQ. Plastic Grate
Top Elevation=193.00
5' 6" PVC (NE)=192.05
5' 6" PVC (SW)=192.05

Area Inlet 12" SQ. Plastic Grate
Top Elevation=192.16
5' 6" PVC (SE)=191.36
5' 5" PVC (NW)=191.36

Area Inlet 12" SQ. Plastic Grate
Top Elevation=192.73
5' 6" PVC (SE)=191.43
5' 6" PVC (NW)=191.43

Area Inlet 12" SQ. Plastic Grate
Top Elevation=192.79
5' 6" PVC (SE)=191.32
5' 6" PVC (NW)=191.39

EXISTING ZONING:
"LC" LIMITED COMMERCIAL
11=192.33
10=194.00

EXISTING ZONING:
"LC" LIMITED COMMERCIAL
11=192.83
10=194.55

WILLOWBEND FIRST ADDITION
ZONED "SF-5" SINGLE FAMILY

RESERVE A
WILLOWBEND FIRST ADDITION
ZONED "SF-5" SINGLE FAMILY

Tree Box

05717

6" PVC (SE)=190.94
6" PVC (N)=190.94
at 12" SQ. Plastic Gate
ation=191.82
C (NW)=190.92
C (SE)=190.92

12" SQ. Plastic Gate
=193.00
)=192.05
V)=192.05

Area Inlet 12" SQ. Plastic Gate
Top Elevation=192.16
6" PVC (SE)=191.36
6" PVC (NW)=191.36
**RESERVE A
WILLOWBEND FIRST ADDITION
ZONED: "LC" LIMITED COMMERCIAL**

Area Inlet 12" SQ. Plastic Gate
Top Elevation=192.73
6" PVC (SE)=191.43
6" PVC (NW)=191.43

Area Inlet 12" SQ. Plastic Gate
Top Elevation=192.79
6" PVC (SE)=191.39
6" PVC (NW)=191.39
Tee Box

**RESERVE A
WILLOWBEND FIRST ADDITION
ZONED: "LC" LIMITED COMMERCIAL
EXISTING USE: GOLF COURSE**

EXISTING ZONING: (VO)
"LC" LIMITED COMMERCIAL

TF=198.33
VO=194.00

EXISTING ZONING: (VO)
"LC" LIMITED COMMERCIAL

TF=198.83
VO=194.50

Area Inlet 12" SQ. Plastic Gate
Top Elevation=193.08
6" PVC (SE)=192.18
6" PVC (NW)=192.08
C.P. #375
60D Nail

Found #4 Rebar
w/Dobler RLS541 Cap
POINT OF BEGINNING

WILLOWBEND FIRST ADDITION

VAC 2012-17

