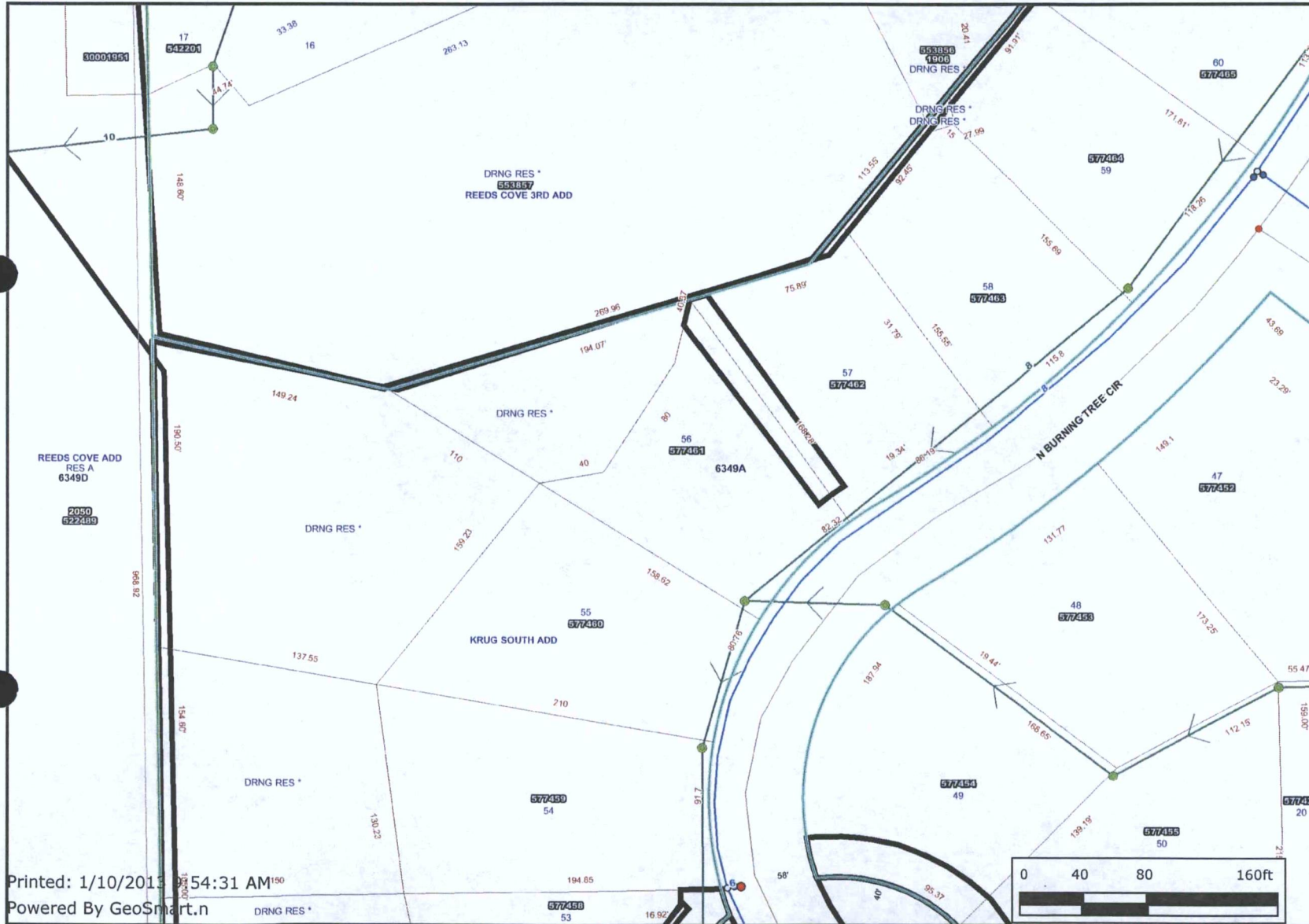




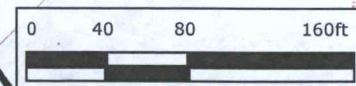
vac2012-50

water & sewer



- McConnell AOI
- Sewer Manholes
- Sewer Observation Manholes
- Hydrant Schematic
- Water Valve Schematic
- Water Node Schematic
- City Limit Boundaries
- Historic Districts
- Old Town Delano Overlay District
- NO
- YES
- Property Parcels
- Lot Block
- Subdivisions
- Sewer Flow
- Sewer Lines
- Water Lines Schematic
- Roads**
- State Highway
- US Federal Highway
- Interstate
- KTA
- Arterial
- Collector
- Minor
- Ramp
- Railroads
- Quarter Section
- HOA

Printed: 1/10/2013 5:31 AM⁵⁰
Powered By GeoSmart.n



Every reasonable effort has been made to assure the accuracy of the maps and associated data provided herein. This information is provided with the understanding that the data are susceptible to a degree of error, and conclusions drawn from such information are the responsibility of the reader. The City of Wichita makes no warranty, representation or guaranty as to the content, accuracy, timeliness or completeness of any of the data provided herein. Some data provided here and used for the preparation of these maps has been obtained from public records not created or maintained by the City of Wichita. The City of Wichita shall assume no liability for any decisions made or actions taken or not taken by the reader in reliance upon any information or data furnished hereunder. The user should consult with the appropriate departmental staff member, e.g. Planning, Parks & Recreation, etc. to confirm the accuracy of information appearing in the visual presentations accessible through these web pages.



FINAL PLAT

KRUG SOUTH ADDITION

AN ADDITION TO WICHITA, SEDGWICK COUNTY, KANSAS

DRAINAGE RESERVES
LINE TABLE

LINE	LENGTH	BEARING
L1	218.52'	N12°28'30"W
L2	107.16	N12°28'30"W
L3	130.23'	N07°28'42"W
L4	139.23'	S39°07'41"W
L5	40.00'	N80°18'03"W
L6	80.00'	N33°05'39"E
L7	40.37'	N13°28'00"E
L8	27.99'	N71°45'50"E
L9	20.41'	N07°32'55"W
L10	72.63'	S63°19'03"W
L11	93.04'	S21°07'37"W
L12	23.42'	S86°19'48"E
L13	41.15'	N77°41'34"E
L14	59.42'	N49°35'40"E
L15	40.00'	N30°39'25"E
L16	91.60'	N17°49'12"E
L17	178.55'	S55°32'53"W

LEGEND

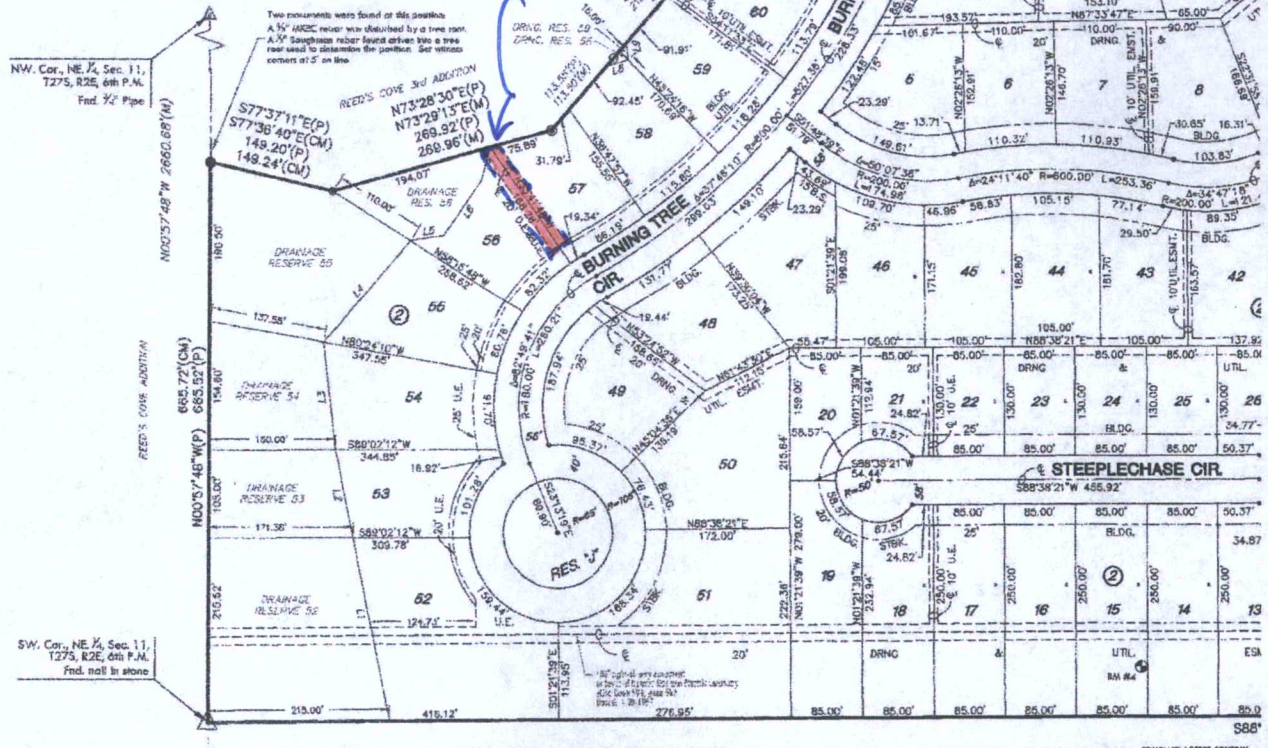
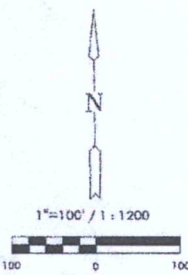
- Date of Survey: September, 2007
- △ = Section Corner Managment Found
 - ⊙ = Found 3/4" Rebar w/ MKEC
CLS 39 id. cap
 - = Set 3/4" Rebar w/ MKEC
CLS 39 id. cap
 - = Found 1/2" Rebar w/ baughman id. cap
 - (M) = Measured
 - (CM) = Calculated from measured
 - (P) = Planted
 - (D) = Deeded or Described

BENCH MARKS

- Datum BM: **T** at NE corner of inlet on S. side of Williamsgate over bridge in Hawthorne Addition.
Elev. = 1355.74 (NGVD 29)
- BM#3: RR spike in N. face of HLP in N. pole, the first HLP w. of E. 143rd St. being 57.3' NE. of SE. corner of Lot 8, Blk. 2.
Elev. = 1370.25 (NGVD 29)
- BM#4: RR spike in N. face of HLP in N. pole, the third HLP west of E. 143rd St. being 59.0' NNW of SE. corner of Lot 15, Blk. 2.
Elev. = 1358.43 (NGVD 29)

MINIMUM PAD ELEVATIONS
LOWEST OPENINGS

LOTS (inclusive)	BLOCK	ELEVATION NGVD
27-32	2	1360.9
40 & 41	2	1360.9
33-39	2	1361.7
52-58	2	1347.7
59	2	1348.0
60	2	1348.4
61	2	1348.9
62	2	1349.9
63	2	1350.7
64	2	1352.5
66 & 65	2	1354.2
68-72	2	1355.8



2
3

COMPLETE ACCESS CONTROL