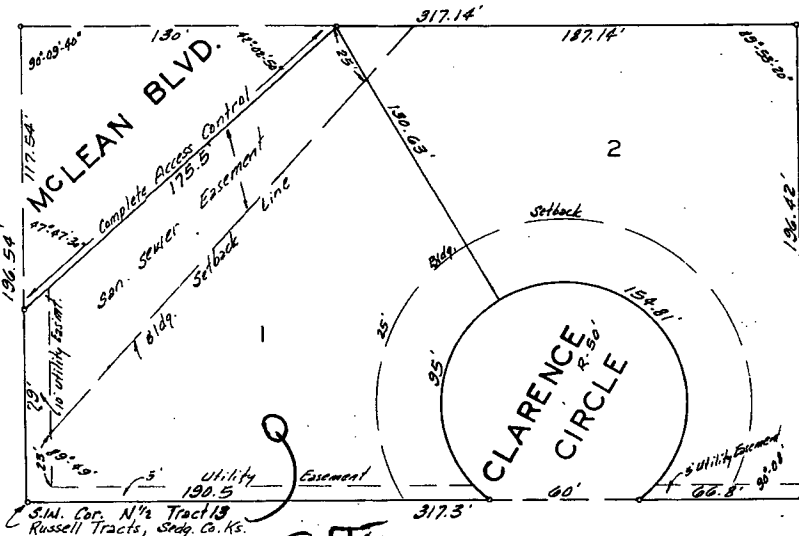


# LADENE ADDITION

WICHITA, KANSAS.

VAC2014-02

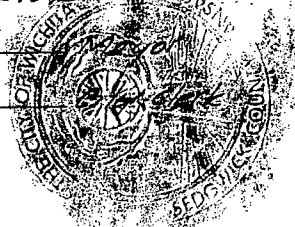


This plat of "LADENE ADDITION" Wichita, Kansas, has been submitted to and approved by the Wichita-Sedgwick County Metropolitan Area Planning Commission, Wichita, Kansas. Dated this 12<sup>th</sup> day of JUNE 1975, Wichita-Sedgwick County Metropolitan Area Planning Commission.

Harlan R. Kamen  
Harlan R. Kamen  
Robert A. Lakin  
Robert A. Lakin

This plat approved and all dedications shown hereon accepted by the Board of Commissioners of the City of Wichita, Kansas this 5 day of AUGUST 1975.

Cornelia Peters  
Cornelia Peters  
Donald C. Crisick  
Donald C. Crisick



This plat approved and all dedications shown hereon accepted by the Board of Commissioners, Sedgwick County, Kansas, this 25 day of August 1975.

Earl E. Rush Chairman  
Tom Scott Commissioner  
John Hale Commissioner

State of Kansas } ss. We, Baughman Company, Surveyors  
Sedgwick County } do hereby certify that we have surveyed and platted "LADENE ADDITION" Wichita, Kansas, and that the accompanying plat is a true and correct exhibit of the property surveyed, described as and being a REPLAT of the N 1/2 of Tract 13, except the north 2 Acres, and except the east 317.5 feet, Russell Tracts, Sedgwick County, Kansas.

7/22/75  
Date



Baughman Company

William L. Korber Surveyor  
William L. Korber

Know all men by these presents

C-1 2-23 ✓