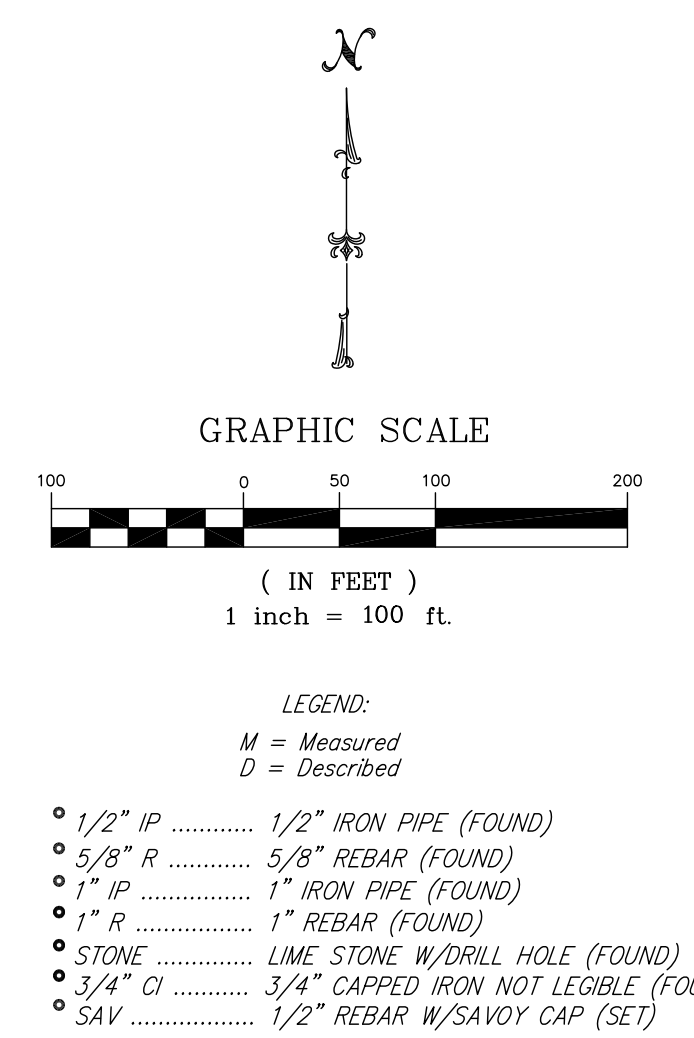
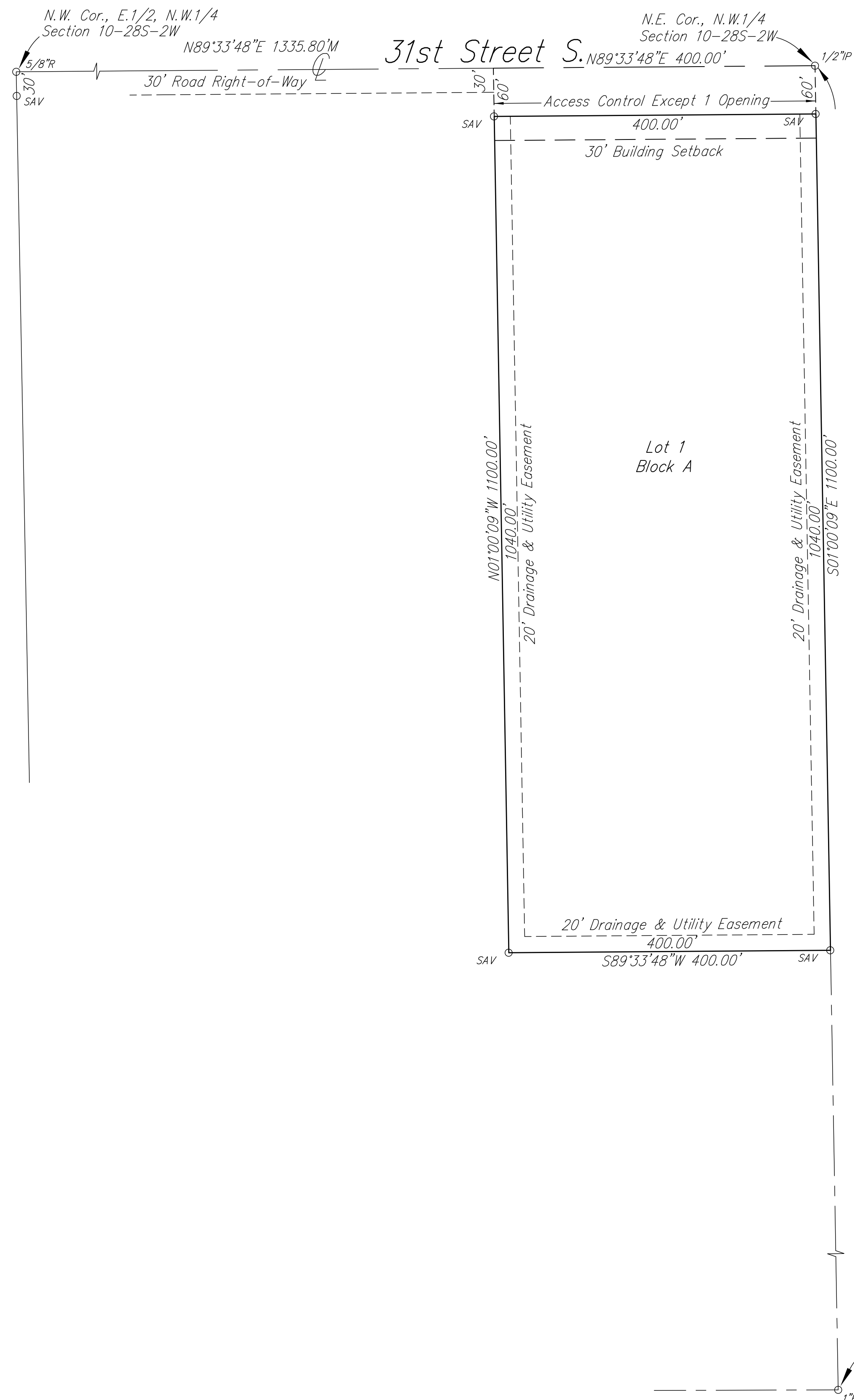




# BAALMANN ACRES

## SEDGWICK COUNTY, KANSAS



ELEVATIONS = NAVD 88 BASED ON SEDGWICK COUNTY LIDAR

State of Kansas) SS  
Sedgwick County)

We, Savoy Company, P.A. Surveyors in aforesaid County and State do hereby certify that, under the supervision of the undersigned, we have surveyed and platted "BAALMANN ACRES", Sedgwick County, Kansas and that the accompany plat is a true and correct exhibit of the property surveyed, described as follows:

That part of the E1/2 of the NW1/4 of Section 10, Twp. 28-S, R-2-W of the 6th P.M., Sedgwick County, Kansas, described as beginning at the N.E. Corner of said NW1/4; thence South along the East line of said NW1/4, 1100 feet; thence West, parallel with the North line of said NW1/4, 400 feet; thence North, parallel with the East line of said NW1/4, 1100 feet to the North line of said NW1/4; thence East along the North line of said NW1/4, 400 feet to the point of beginning.

All Public easements and dedications being vacated by virtue of K.S.A. 12-512(b).

Savoy Company, P.A.  
Date \_\_\_\_\_  
Mark A. Savoy RLS #788  
Surveyor

Reviewed in accordance with K.S.A. 58-2005 on this \_\_\_\_\_ day of \_\_\_\_\_, 2017.

Deputy County Surveyor  
Sedgwick County Kansas  
Tricia L. Robello, LS #1246

Know all men by these presents that We, the undersigned, have caused the land described in the surveyors certificate to be platted into a Lot, Block, and Street to be known as "BAALMANN ACRES", Sedgwick County, Kansas. The street is hereby dedicated to and for the use of the Public. The drainage and utility easements are hereby granted as indicated for the construction and maintenance of all public utilities, and for drainage purposes. A drainage plan has been developed for this plat and all drainage easements, rights-of-way, or reserves shall remain at established grades, or as modified with the approval of the Engineer of the appropriate governing body and unobstructed to allow for the conveyance of stormwater. Access Controls are hereby granted to the appropriate governing body as shown on the face of the plat.

Thomas H. Baalman Bonnie J. Baalman

State of Kansas) SS  
Sedgwick County)

The foregoing instrument acknowledged before me, this \_\_\_\_\_ day of \_\_\_\_\_, 2017, by Thomas H. Baalman and Bonnie J. Baalman, Husband and Wife.

My App't. Exp. \_\_\_\_\_ Notary Public

State of Kansas) SS  
Sedgwick County)

This plat of "BAALMANN ACRES", Sedgwick County, Kansas has been submitted to and approved by the Wichita-Sedgwick County Metropolitan Area Planning Commission, Wichita, Kansas.

Dated this \_\_\_\_\_ day of \_\_\_\_\_, 2017.  
Wichita-Sedgwick County Metropolitan Area Planning Commission

Chair  
David Foster

Secretary  
Dale Miller

State of Kansas) SS  
Sedgwick County)

The dedications shown on this plat, if any, are hereby accepted by the Board of County Commissioners, Sedgwick County, Kansas, on this \_\_\_\_\_ day of \_\_\_\_\_, 2017.

Chairman  
Jim Howell

County Clerk  
Kelly B. Arnold

Entered on transfer record this \_\_\_\_\_ day of \_\_\_\_\_, 2017.

County Clerk  
Kelly B. Arnold

State of Kansas) SS  
Sedgwick County)

This is to certify that this plat has been filed for record in the office of the Register of Deeds, this \_\_\_\_\_ day of \_\_\_\_\_, 2017, at \_\_\_\_\_ o'clock \_\_\_\_\_ M: and is duly recorded.

Register of Deeds  
Tonya Buckingham

Deputy  
Judy Pagent