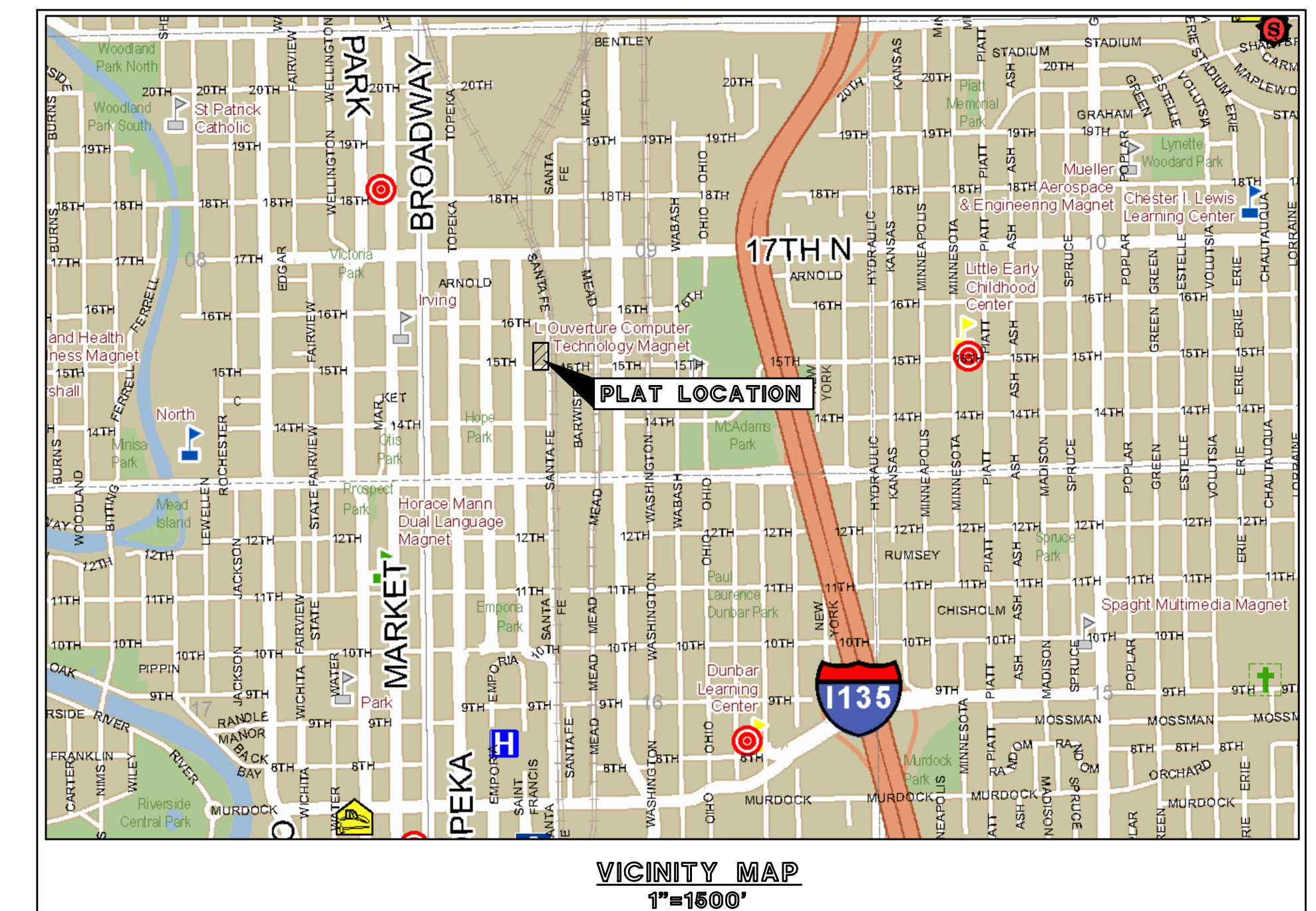


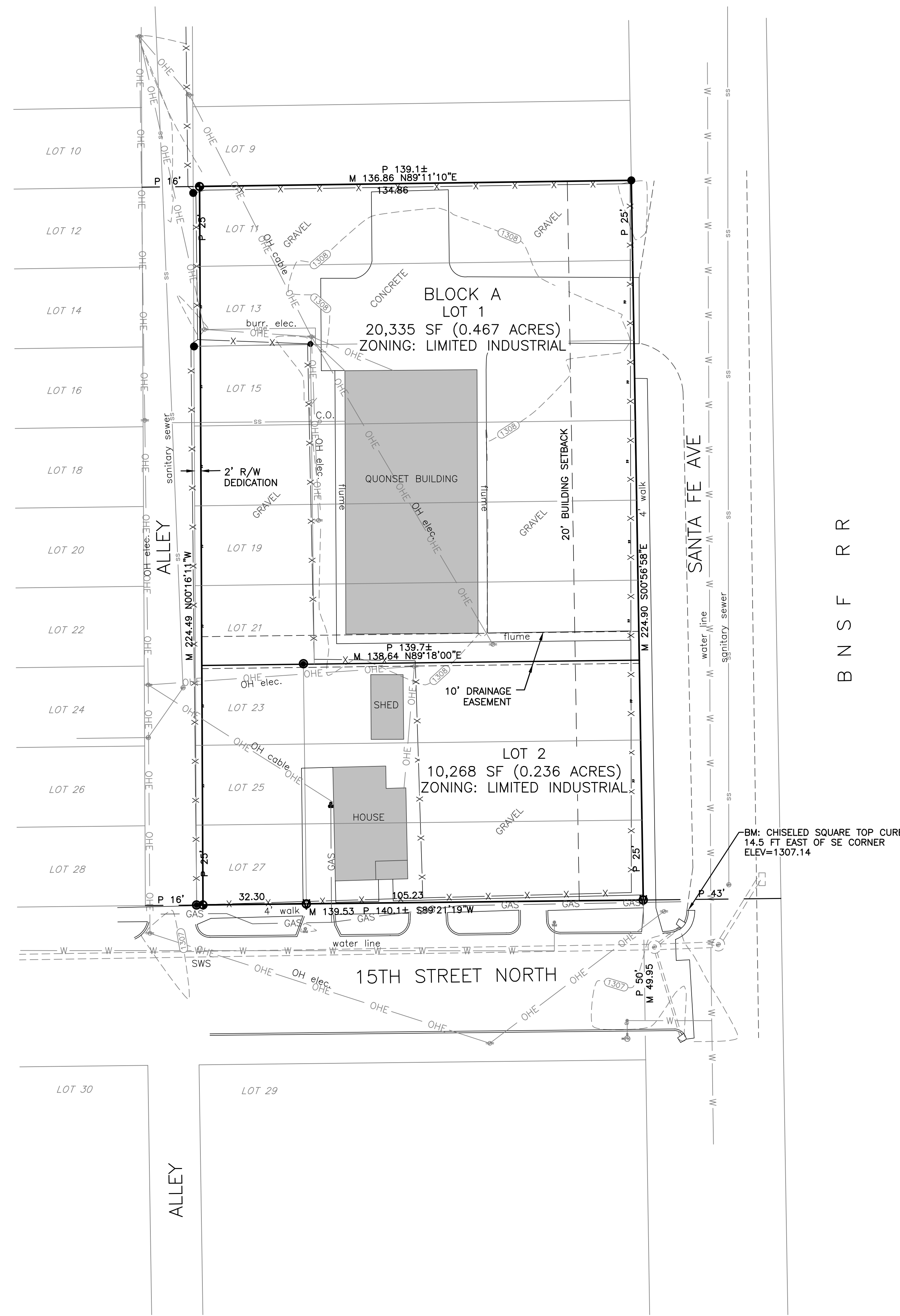
# PRELIMINARY PLAT BOOZE ADDITION

A PORTION OF THE SOUTHWEST QUARTER OF THE NORTHEAST QUARTER OF SECTION 9, TOWNSHIP 27 SOUTH, RANGE 1 EAST OF THE 6TH PRINCIPAL MERIDIAN, WICHITA, SEDGWICK COUNTY, KANSAS



LEGAL DESCRIPTION:

LOTS 11, 13, 15, 17, 19, 21, 23, 25, AND 27, FIFTH AVE, NOW SANTA FE AVE, NORTH PARK ADDITION TO WICHITA, SEDGWICK COUNTY, KANSAS.

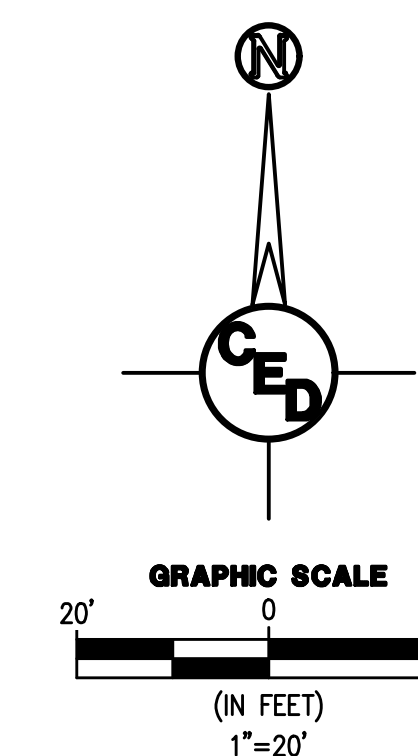


B  
N  
S  
F  
R  
R

## LEGEND

- M MEASURED DISTANCE
- R RECORDED DISTANCE
- P PLATTED DISTANCE
- "LS-780" CAPPED REBAR SET
- "SAVOY" CAPPED REBAR FOUND
- "BAUGHMAN" CAPPED REBAR FOUND
- 1/2" IRON PIPE FOUND
- CHISELED "V" IN CONCRETE FOUND
- POWER POLE
- LIGHT POLE
- MANHOLE
- GAS METER
- WATER METER
- WATER VALVE
- FIRE HYDRANT

BENCHMARK:  
CHISELED SQUARE ON TOP OF CURB LOCATED APPROXIMATELY 14.5' EAST OF SE CORNER OF LOT 27, FIFTH AVE, NOW SANTA FE AVE, NORTH PARK ADDITION TO WICHITA, SEDGWICK COUNTY, KANSAS ELEV = 1307.14 NAVD88



OWNERS:  
BOOZE RENTAL LLC  
CONTACT: LARRY BOOZE  
105 N LINCOLN ST  
CHENEY, KS 67025

BOOZE, LARRY & SUE  
10818 E MAPLE GROVE RD  
MT HOPE, KS 67108

SURVEYOR:  
ARMSTRONG LAND SURVEY, P.A.  
1601 E. HARRY  
WICHITA, KANSAS 67211  
(316) 263-0082

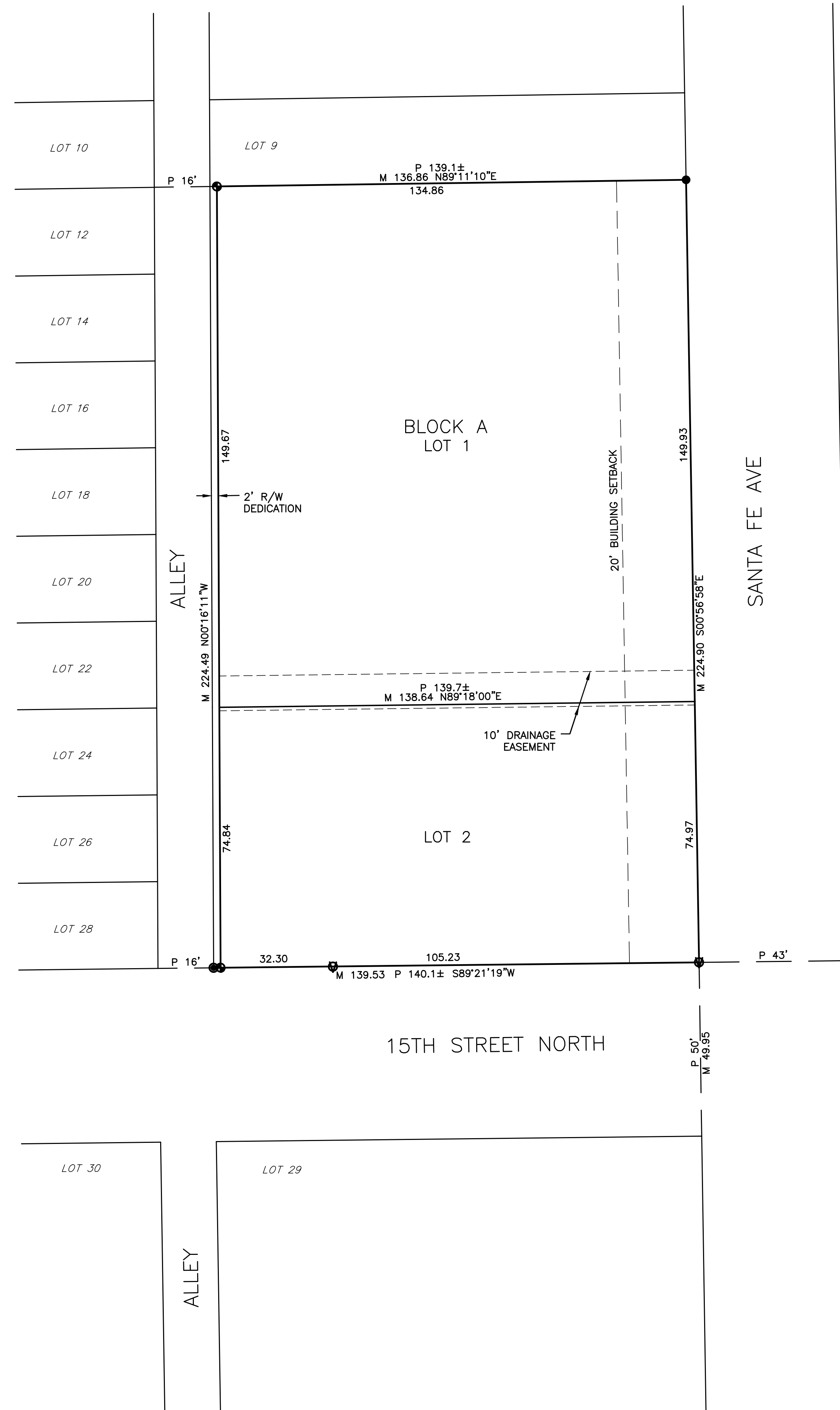
NOTE: BOUNDARY SURVEY COMPLETED BY ARMSTRONG LAND SURVEY, P.A., ON OR ABOUT OCTOBER 2, 2018.

CIVIL DRAWINGS PREPARED BY:

	<b>CERTIFIED ENGINEERING DESIGN, P.A.</b> 1935 WEST MAPLE STREET WICHITA, KANSAS 67213 PH: (316) 262-8808 FAX: (316) 262-1669	SHEET <b>1</b>
		TOTAL <b>1</b>

# FINAL PLAT BOOZE ADDITION

A PORTION OF THE SOUTHWEST QUARTER OF THE NORTHEAST  
QUARTER OF SECTION 9, TOWNSHIP 27 SOUTH, RANGE 1 EAST OF  
THE 6TH PRINCIPAL MERIDIAN, WICHITA, SEDGWICK COUNTY, KANSAS



**LAND SURVEYOR'S CERTIFICATE AND DESCRIPTION**

I, THE UNDERSIGNED, REGISTERED PROFESSIONAL SURVEYOR IN SAID STATE, DO HEREBY CERTIFY THAT UNDER MY SUPERVISION, THE FOLLOWING DESCRIBED TRACT OF LAND WAS SURVEYED BY ARMSTRONG LAND SURVEY, P.A., ON OR ABOUT OCTOBER 2, 2018 AND THAT THE ACCOMPANYING FINAL PLAT PREPARED AND ALL THE MONUMENTS SHOWN HEREIN EXIST AND THEIR POSITIONS ARE CORRECTLY SHOWN, UNLESS OTHERWISE NOTED, TO THE BEST OF MY KNOWLEDGE AND IS DESCRIBED AS FOLLOWS:

**LEGAL DESCRIPTION:**

LOTS 11, 13, 15, 17, 19, 21, 23, 25, AND 27, FIFTH AVE, NOW SANTA FE AVE, NORTH PARK ADDITION TO WICHITA, SEDGWICK COUNTY, KANSAS.

ALL PUBLIC EASEMENTS AND DEDICATIONS BEING VACATED BY VIRTUE OF K.S.A. 12-512b, AS AMENDED.

ARMSTRONG LAND SURVEY, P.A.

DATE: \_\_\_\_\_ DONALD C. ARMSTRONG, PS #780

**OWNER'S CERTIFICATE AND DEDICATION**

STATE OF KANSAS) SS  
SEDGWICK COUNTY)

KNOW ALL MEN BY THESE PRESENTS THAT I, THE UNDERSIGNED, HAVE CAUSED THE LAND DESCRIBED IN THE SURVEYOR'S CERTIFICATE TO BE PLATTED INTO LOTS AND A BLOCK TO BE KNOWN AS "BOOZE ADDITION" IN WICHITA, SEDGWICK COUNTY, KANSAS. DRAINAGE EASEMENTS ARE HEREBY GRANTED AS INDICATED FOR DRAINAGE PURPOSES. NO SIGNS, LIGHT POLES, PRIVATE DRAINAGE SYSTEMS, MASONRY FENCES, MASONRY TRASH ENCLOSURES OR OTHER STRUCTURES SHALL BE LOCATED WITHIN PUBLIC UTILITY EASEMENTS UNLESS A USE OF EASEMENT PERMIT IS OBTAINED FROM THE CITY OF WICHITA PUBLIC WORKS & UTILITIES DEPARTMENT.

LOTS PLATTED HEREIN MAY BE SUBJECT TO FUTURE GRADING PLANS. A DRAINAGE PLAN HAS BEEN DEVELOPED FOR THE PLAT. ALL DRAINAGE EASEMENTS, RIGHTS-OF-WAY, AND RESERVES SHALL REMAIN AT ESTABLISHED GRADES OR AS MODIFIED WITH THE APPROVAL OF THE APPLICABLE CITY OR COUNTY ENGINEER AND UNOBSERVED TO ALLOW FOR THE CONVEYANCE OF STORMWATER IN ACCORDANCE WITH THE STORMWATER MANUAL.

\_\_\_\_\_  
LARRY BOOZE, OWNER

\_\_\_\_\_  
SUE BOOZE, OWNER

STATE OF KANSAS) SS  
SEDGWICK COUNTY)

THIS INSTRUMENT WAS ACKNOWLEDGED BEFORE ME, THIS \_\_\_\_ DAY OF \_\_\_\_\_, 20\_\_\_\_, BY LARRY BOOZE & SUE BOOZE, HUSBAND AND WIFE.

SEAL OR STAMP \_\_\_\_\_, NOTARY PUBLIC

MY APPOINTMENT EXPIRES: \_\_\_\_\_

**PLANNING COMMISSION CERTIFICATE**

THIS PLAT OF "BOOZE ADDITION" HAS BEEN SUBMITTED TO AND APPROVED BY THE WICHITA-SEDGWICK COUNTY METROPOLITAN AREA PLANNING COMMISSION, WICHITA, KANSAS.

DATED THIS \_\_\_\_ DAY OF \_\_\_\_\_, 20\_\_\_\_

WICHITA-SEDGWICK COUNTY METROPOLITAN AREA PLANNING COMMISSION

BY \_\_\_\_\_ CHAIR  
CINDY MILES

ATTEST: \_\_\_\_\_ SECRETARY  
DALE MILLER

**GOVERNING BODY CERTIFICATE**

STATE OF KANSAS) SS  
SEDGWICK COUNTY)

THIS PLAT APPROVED AND ALL DEDICATIONS SHOWN HEREON, IF ANY, ACCEPTED BY THE WICHITA CITY COUNCIL OF THE CITY OF WICHITA, KANSAS, THIS \_\_\_\_ DAY OF \_\_\_\_\_, 2018.

\_\_\_\_\_  
JEFF LONGWELL, MAYOR

ATTEST: \_\_\_\_\_ CITY CLERK  
KAREN SUBLETT

**TRANSFER RECORD**

ENTERED ON TRANSFER RECORD THIS \_\_\_\_ DAY OF \_\_\_\_\_, 20\_\_\_\_

\_\_\_\_\_  
KELLY B. ARNOLD, COUNTY CLERK

**REGISTER OF DEEDS**

STATE OF KANSAS) SS  
SEDGWICK COUNTY)

THIS IS TO CERTIFY THAT THIS INSTRUMENT WAS FILED FOR RECORD IN THE REGISTER OF DEEDS OFFICE, AT \_\_\_\_ A.M. - P.M., ON THE \_\_\_\_ DAY OF \_\_\_\_\_, 20\_\_\_\_

\_\_\_\_\_  
TONYA BUCKINGHAM, REGISTER OF DEEDS

\_\_\_\_\_  
JUDY J. PAGET, DEPUTY

**COUNTY SURVEYOR CERTIFICATE**

STATE OF KANSAS) SS  
SEDGWICK COUNTY)

REVIEWED IN ACCORDANCE WITH K.S.A. 58-2005 ON THIS \_\_\_\_ DAY OF \_\_\_\_\_, 20\_\_\_\_

\_\_\_\_\_  
TRICIA L. ROBELLO, PS #1246, DEPUTY COUNTY SURVEYOR  
SEDGWICK COUNTY, KANSAS

OWNERS:  
BOOZE RENTAL LLC  
CONTACT: LARRY BOOZE  
105 N LINCOLN ST  
CHENEY, KS 67025

BOOZE, LARRY & SUE  
10818 E MAPLE GROVE RD  
MT HOPE, KS 67108

SURVEYOR:  
ARMSTRONG LAND SURVEY, P.A.  
1601 E. HARRY  
WICHITA, KANSAS 67211  
(316) 263-0082

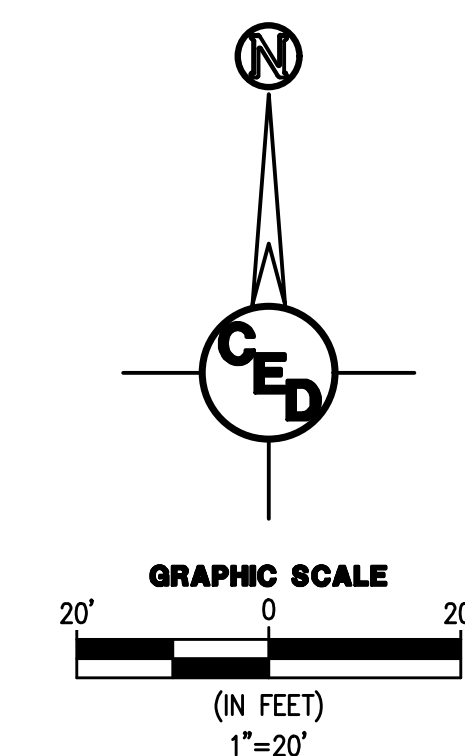
NOTE: BOUNDARY SURVEY  
COMPLETED BY ARMSTRONG  
LAND SURVEY, P.A., ON OR  
ABOUT OCTOBER 2, 2018.

**LEGEND**

- M MEASURED DISTANCE
- R RECORDED DISTANCE
- P PLATTED DISTANCE
- "LS-780" CAPPED REBAR SET
- "SAVOY" CAPPED REBAR FOUND
- "BAUGHMAN" CAPPED REBAR FOUND
- Ⓢ CHISELED "V" IN CONCRETE FOUND

**CLOSURE COMPUTATION**  
PERIMETER=725.78'  
AREA=0.713 ACRES  
NORTHING ERROR=0.0076  
EASTING ERROR=0.0051  
ERROR OF CLOSURE=0.0092  
PRECISION=1:78,889

**BENCHMARK:**  
CHISELED SQUARE ON TOP OF CURB LOCATED APPROXIMATELY 14.5' EAST OF SE CORNER OF LOT 27, FIFTH AVE, NOW SANTA FE AVE, NORTH PARK ADDITION TO WICHITA, SEDGWICK COUNTY, KANSAS  
ELEV = 1307.14 NAVD88



CIVIL DRAWINGS PREPARED BY:

<b>CERTIFIED ENGINEERING DESIGN, P.A.</b>	
<b>CED</b>	1935 WEST MAPLE STREET WICHITA, KANSAS 67213 PH: (316) 262-8808 FAX: (316) 262-1669
SHEET <b>1</b>	TOTAL <b>1</b>