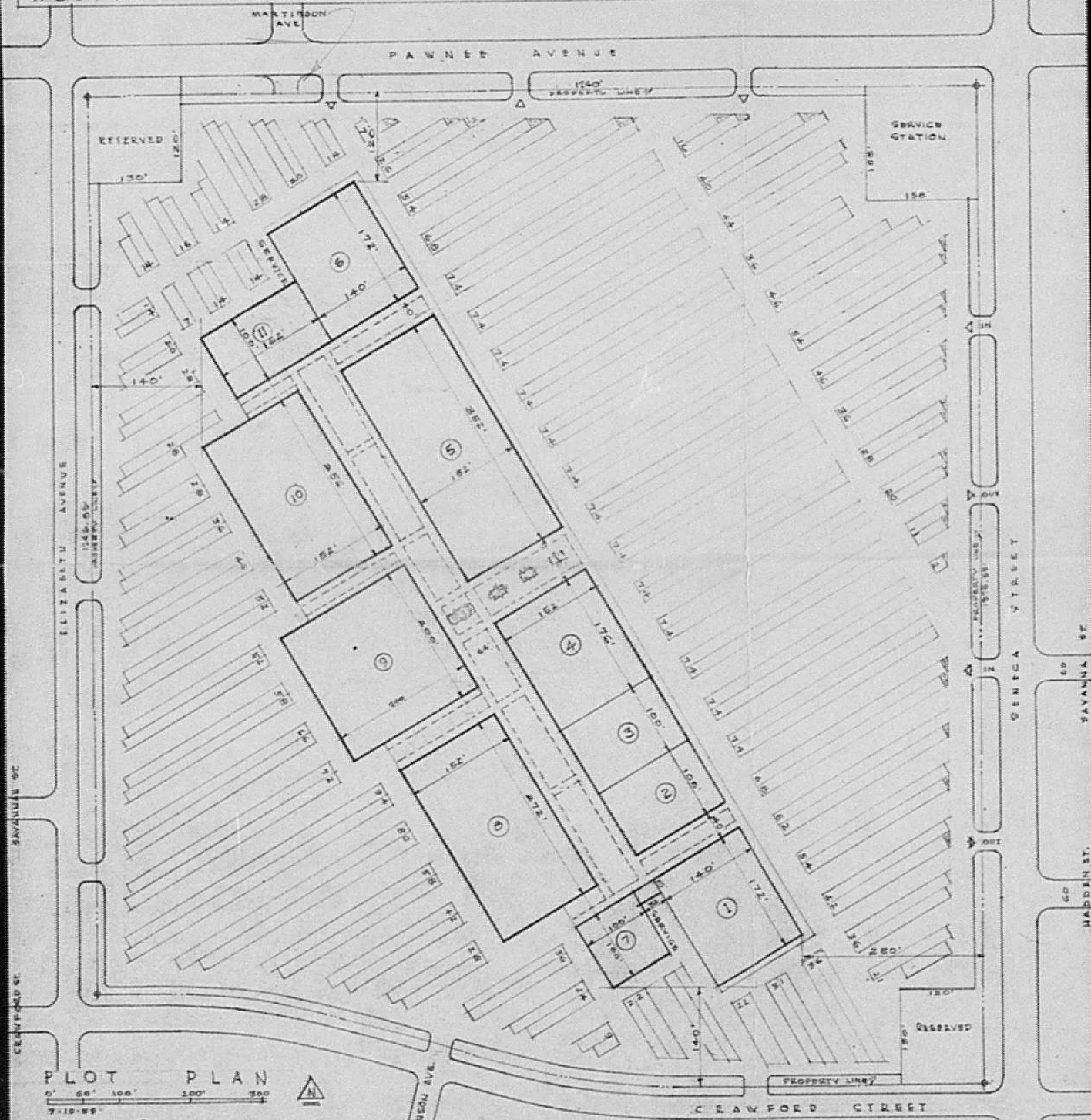


WESTWAY REGIONAL SHOPPING CENTER WICHITA KAN.

Approved Plot Plan
8-4-59



LEGAL DESCRIPTION
BLOCK 1 - LOTS 1 TO 26 INCLUSIVE WITH THE EXCEPTION OF THE NORTH EAST CORNER OF BLOCK 1 MEASURING 158'x158', BLOCK 2 - LOTS 1 TO 28 INCLUSIVE, BLOCK 3 - LOTS 1 TO 19 INCLUSIVE, BLOCK 4 - LOTS 1 TO 19 INCLUSIVE, BLOCK 5 - LOTS 1 TO 21 INCLUSIVE VACATED - MARTINSON AVE., SAVANNAH ST., HADDEN ST., ALLEY IN BLOCK 1 LYING WITHIN SAID AREAS.

ZONING DESCRIPTION
L.C.- BLOCK 1, LOTS 1 TO 26 INCLUSIVE WITH THE EXCEPTION OF THE NORTH EAST CORNER MEASURING 158'x158', BLOCK 4--LOTS 1 TO 19 INCLUSIVE, BLOCK 5--LOTS 1 TO 10 INCLUSIVE, BLOCK 3--LOTS 3 TO 12 INCLUSIVE, BLOCK 2--LOTS 15 TO 28 INCLUSIVE.
B.R.- BLOCK 2--LOTS 1 TO 14 INCLUSIVE, BLOCK 3--LOTS 1,2,13, TO 19 INCLUSIVE, BLOCK 5--LOTS 11 TO 21 INCLUSIVE.

LAND AREAS
TOTAL (NET) LAND AREA --- 1,634,500 SQ. FT. OR 37.52 NET ACRES.
TOTAL (NET) PARKING AREA- 1,232,600 SQ.FT.
TOTAL NO. OF PARKING STALLS (APPRX.)-- 3,580
PARKING RATIO = 1:4

STAGES OF CONSTRUCTION

STAGE	UNIT	DESCRIPTION	SQ. FT.
STAGE I	UNIT 1	FOOD STORE	24,080
	UNIT 2	SHOPS	15,200
	UNIT 3	VARIETY STORE	15,200
	UNIT 4	DRUG STORE	26,752
	TOTAL AREA STAGE 1		
STAGE II	UNIT 5	SHOPS & STORES	53,504
	UNIT 6	FOOD STORE	24,080
TOTAL AREA STAGE II			77,584
STAGE III	UNIT 7	SHOPS	10,480
	UNIT 8	STORES & SHOPS	41,344
	UNIT 9	JR. DEPT. STORE	40,000
TOTAL AREA STAGE III			91,824
STAGE IV	UNIT 10	STORES & SHOPS	38,912
	UNIT 11	SHOPS	15,200
TOTAL AREA STAGE IV			54,112
TOTAL GROUND FLOOR AREA			304,752

PLOT PLAN
0' 50' 100' 200' 300'
7-10-59

DP-21