

**PARKING LAYOUT
DAYTIME EMPLOYEE PARKING**

LEGAL DESCRIPTION:
Lots 70 and 72 on Lorraine Avenue, Second
Sunwayside Addition, Sedgwick County, Kansas.

- NOTES:**
1. No artificial lighting will be allowed for the purpose of illuminating the parking.
 2. No parking will be allowed after hours. The drive entrance shall be blocked from 6:00 P.M. until 6:00 A.M. daily by a guard chain or similar device.
 3. The Lot shall be graded in such a manner as to drain to Lorraine Avenue via an approved driveway, flume or inlet.

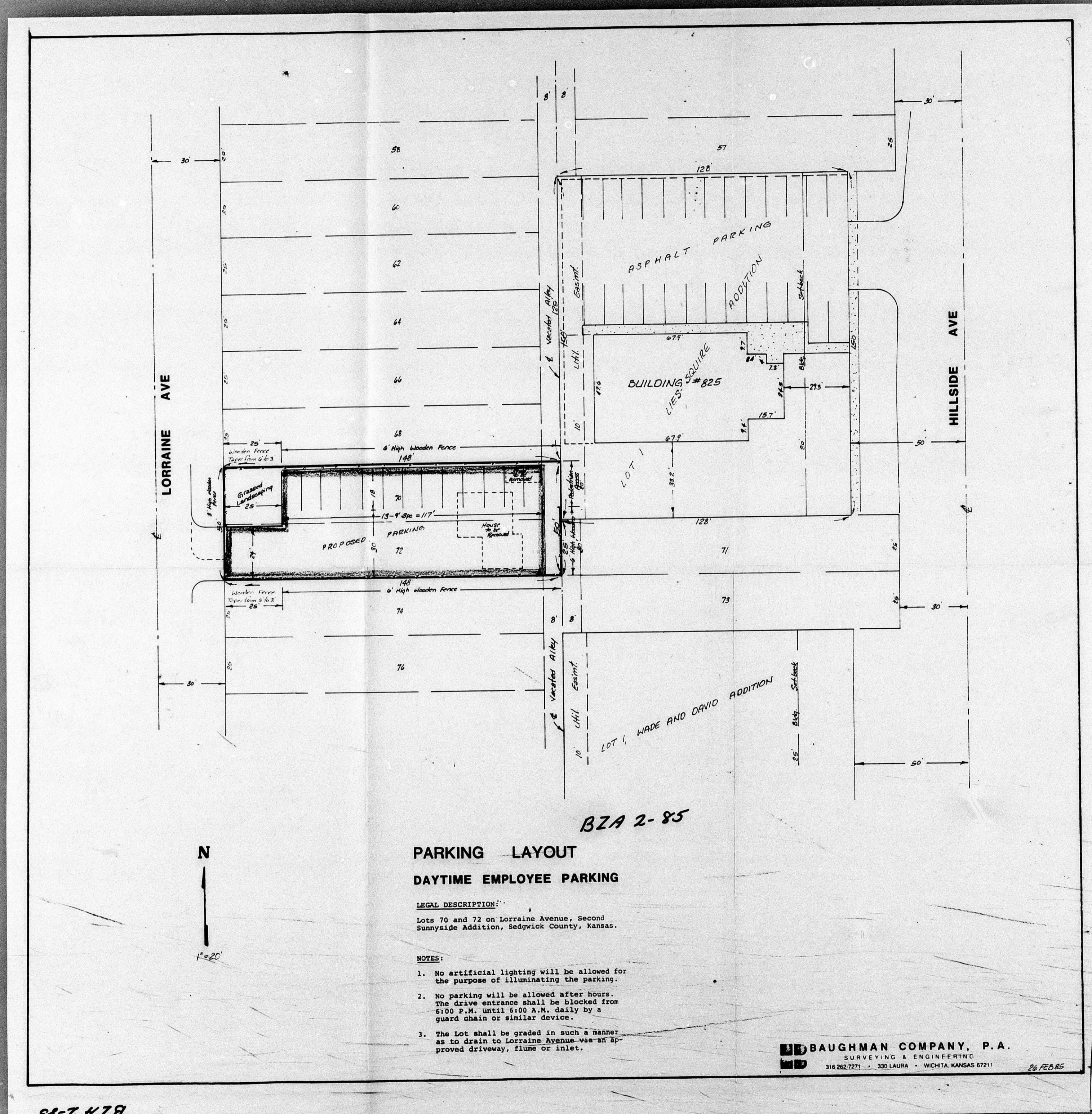
BZA 2-85

BAUGHMAN COMPANY, P.A.
SURVEYING & ENGINEERING
316 262-7271 • 330 LAURA • WICHITA, KANSAS 67211

26-FEB-85

BZA 2-85

FILMED FROM THE BEST
AVAILABLE COPY



BZA 2-85

PARKING LAYOUT
DAYTIME EMPLOYEE PARKING

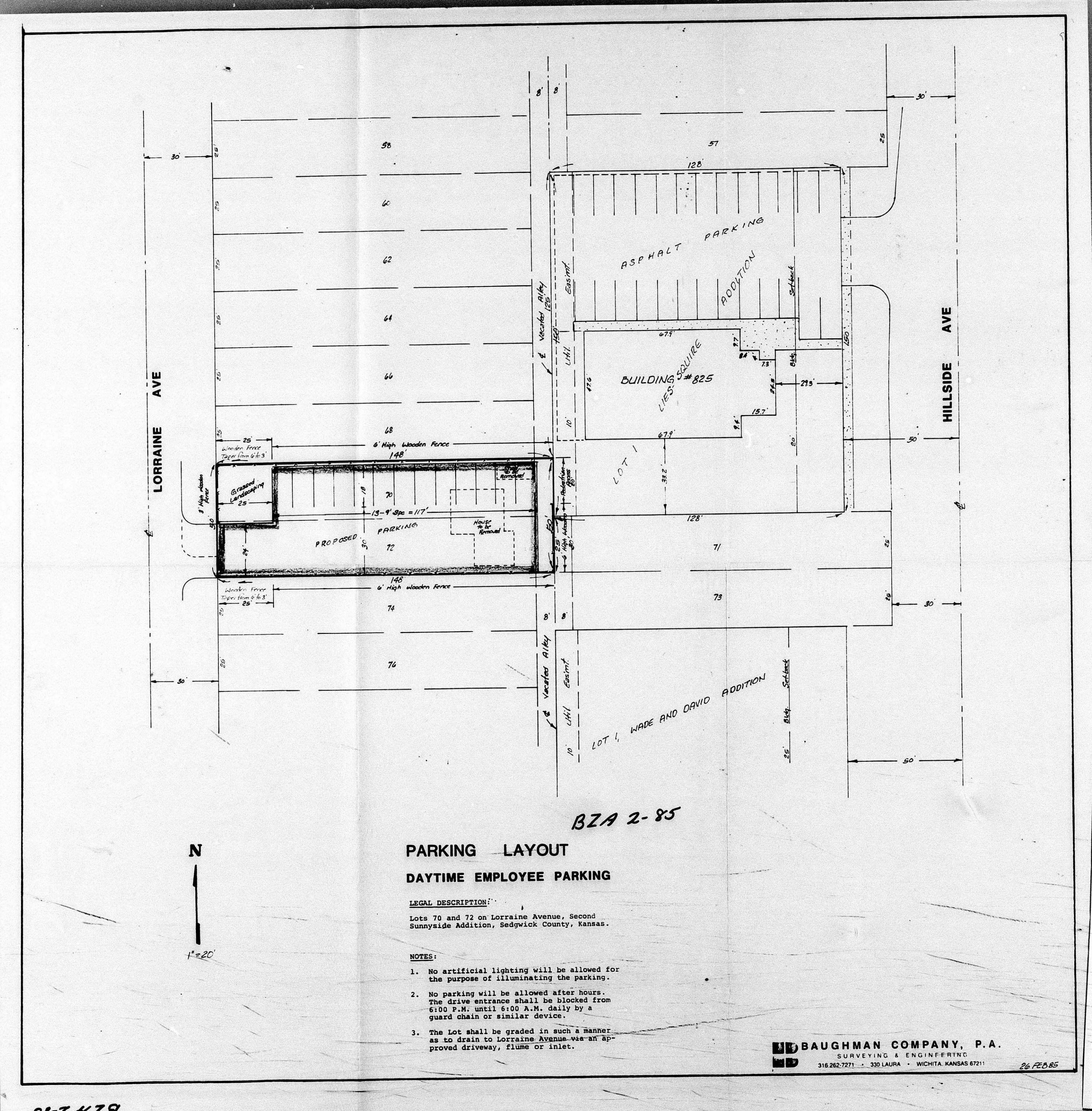
LEGAL DESCRIPTION:
 Lots 70 and 72 on Lorraine Avenue, Second
 Sunnyside Addition, Sedgwick County, Kansas.

- NOTES:**
1. No artificial lighting will be allowed for the purpose of illuminating the parking.
 2. No parking will be allowed after hours. The drive entrance shall be blocked from 6:00 P.M. until 6:00 A.M. daily by a guard chain or similar device.
 3. The Lot shall be graded in such a manner as to drain to Lorraine Avenue via an approved driveway, flume or inlet.

BAUGHMAN COMPANY, P.A.
 SURVEYING & ENGINEERING
 316.262.7271 • 330 LAURA • WICHITA, KANSAS 67211

BZA 2-85

FILMED FROM THE BEST AVAILABLE COPY



BZA 2-85

PARKING LAYOUT
DAYTIME EMPLOYEE PARKING

LEGAL DESCRIPTION:
 Lots 70 and 72 on Lorraine Avenue, Second Sunnyside Addition, Sedgewick County, Kansas.

- NOTES:**
1. No artificial lighting will be allowed for the purpose of illuminating the parking.
 2. No parking will be allowed after hours. The drive entrance shall be blocked from 6:00 P.M. until 6:00 A.M. daily by a guard chain or similar device.
 3. The Lot shall be graded in such a manner as to drain to Lorraine Avenue via an approved driveway, flume or inlet.

BAUGHMAN COMPANY, P.A.
 SURVEYING & ENGINEERING
 316.262.7271 • 330 LAURA • WICHITA, KANSAS 67211

26 FEB 85

BZA 2-85

FILMED FROM THE BEST AVAILABLE COPY

