

SITE DATA

| | |
|-------------------|-----------|
| ACRES IN SITE | 2.12 A. |
| S.F. CONSTRUCTION | 29,200 SF |
| PARKING REQ'D. | 15 |
| PARKING PROVIDED | 15 |

SITE DEVELOPMENT PLAN
 1" = 50 FEET

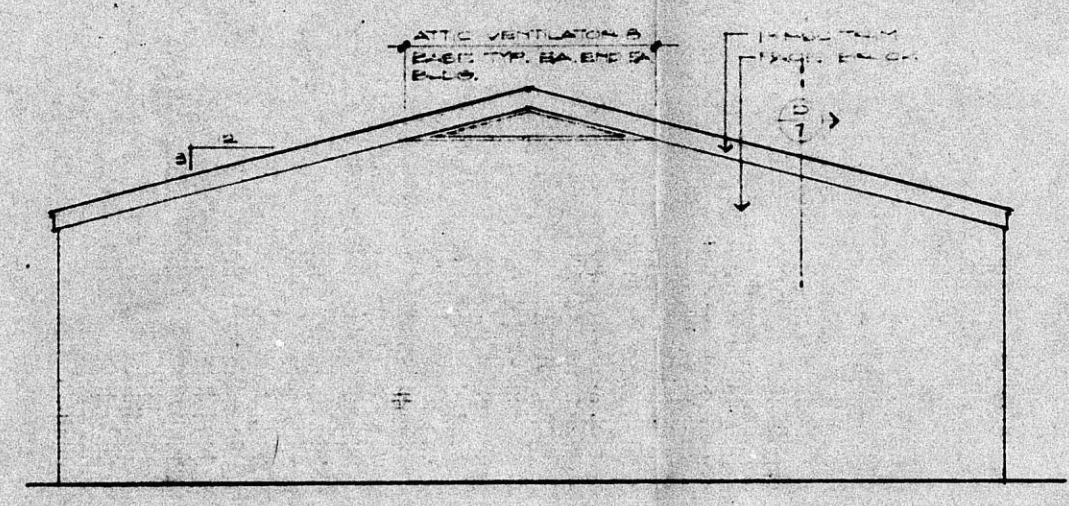
LEGAL - LOTS 1, 2 & 3,
 ROBERT HAYS ADDITION,
 WICHITA, SEDGWICK COUNTY,
 KANSAS.

B2A5-8

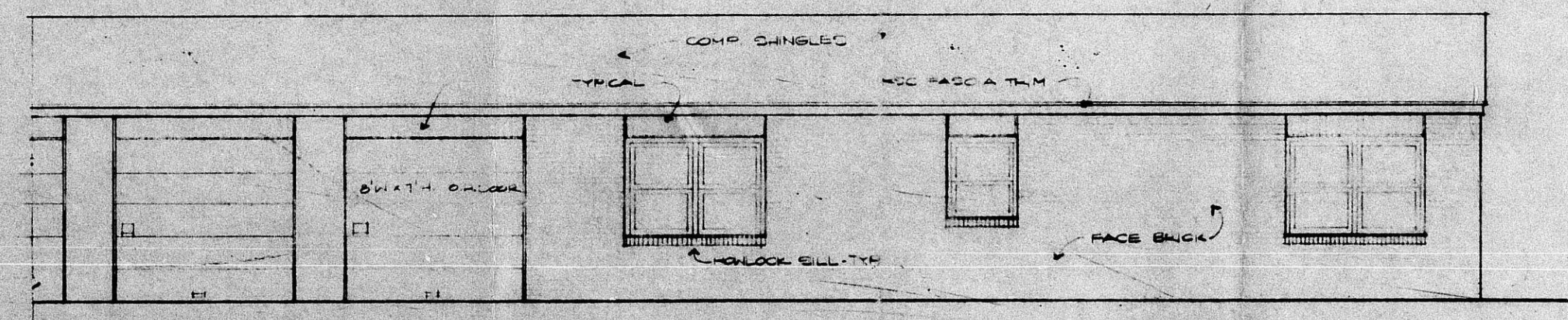
ROBERT A. BROOKS
 ARCHITECT P.A.
 1101 N. W. 10TH ST., SUITE 100
 WICHITA, KANSAS 67202

DATE: 3/16/81

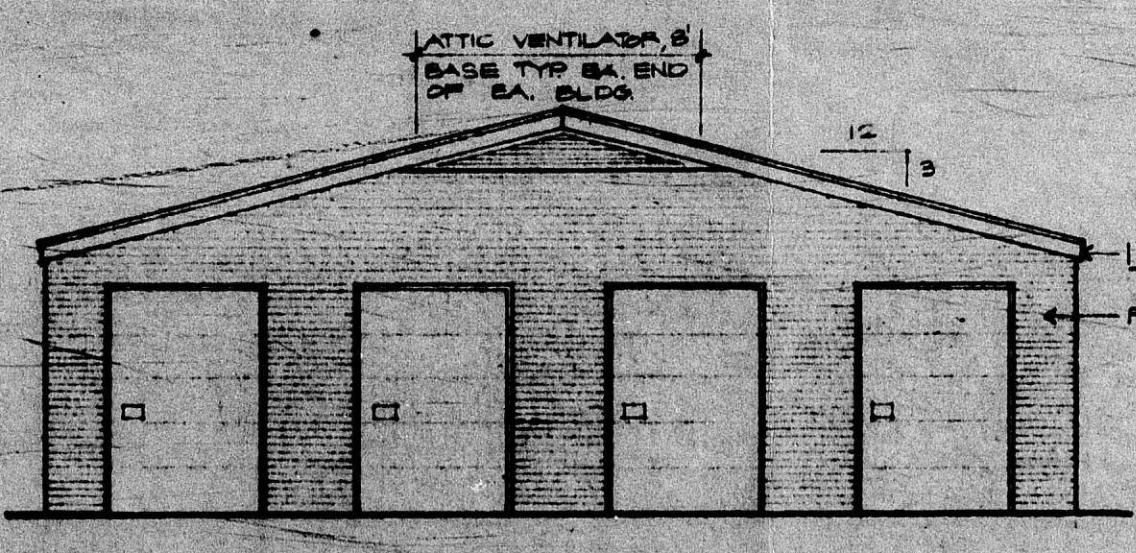
1
 0 2



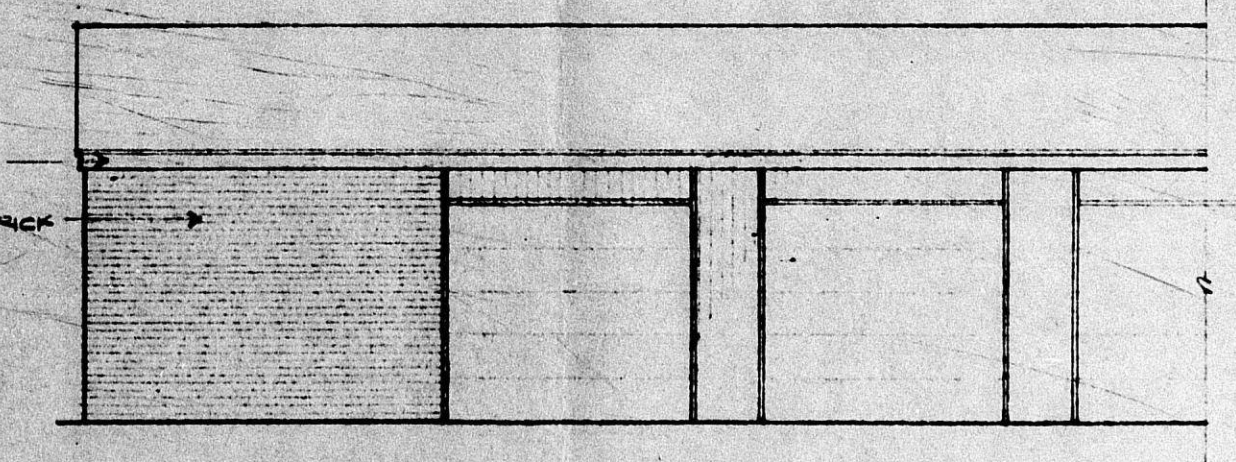
"D" TYP END ELEV - NO DOORS



"C" TYP MANAGERS UNIT ELEVATION



"B" TYP END ELEV - WITH DOORS



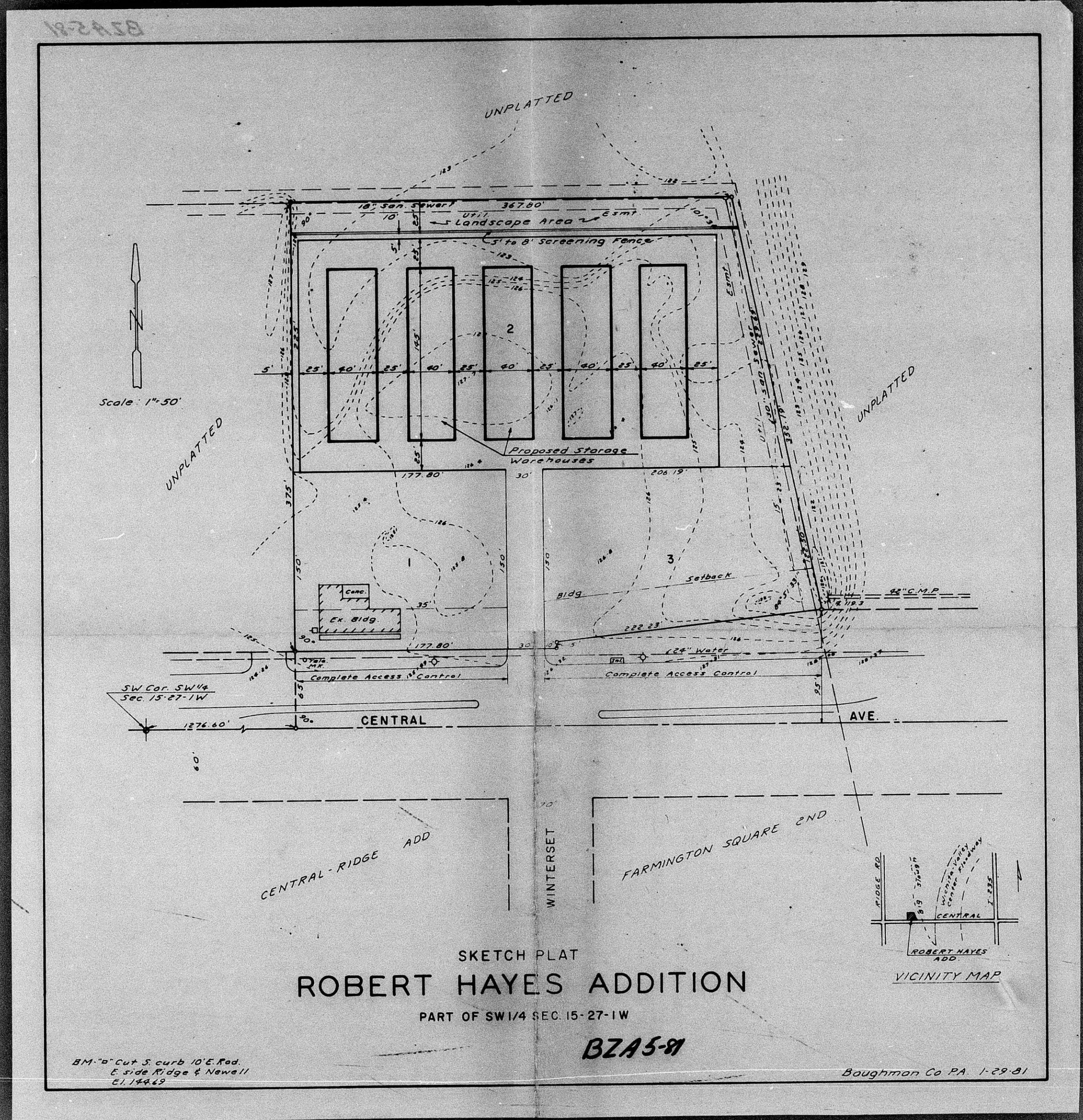
"A" TYP SIDE ELEV - STORAGE

B2A5-8

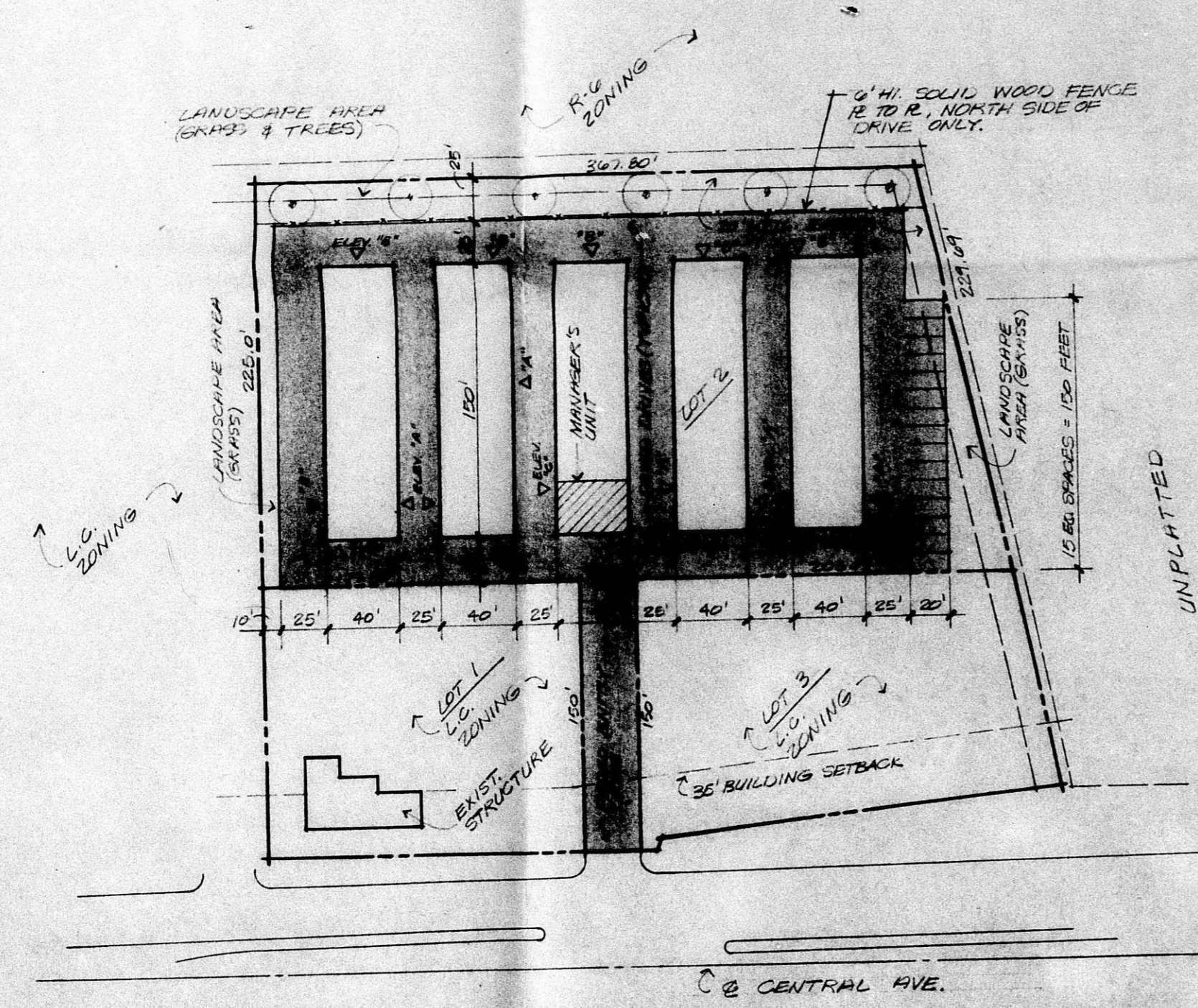
ROBERT A. BROOKS
 ARCHITECT P.A.
 1101 N. W. 10TH ST., SUITE 100
 WICHITA, KANSAS 67202

DATE: 3/16/81

2
 0 2



FILMED FROM THE BEST AVAILABLE COPY



SITE DATA

ACRES IN SITE — 2.12 A.

SF. CONSTRUCTION — 20,000 SF.

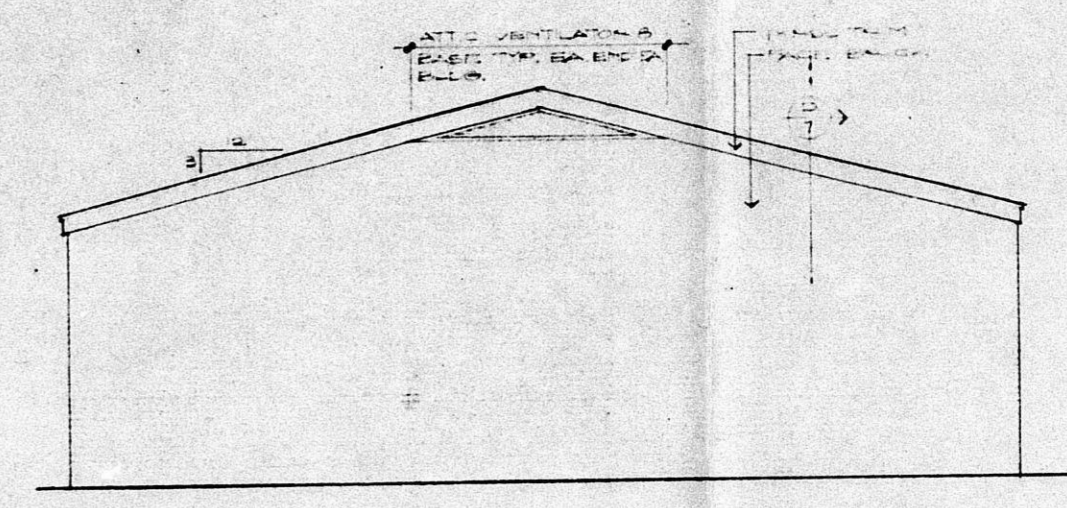
PARKING REQ'D — 15

PARKING PROVIDED — 15

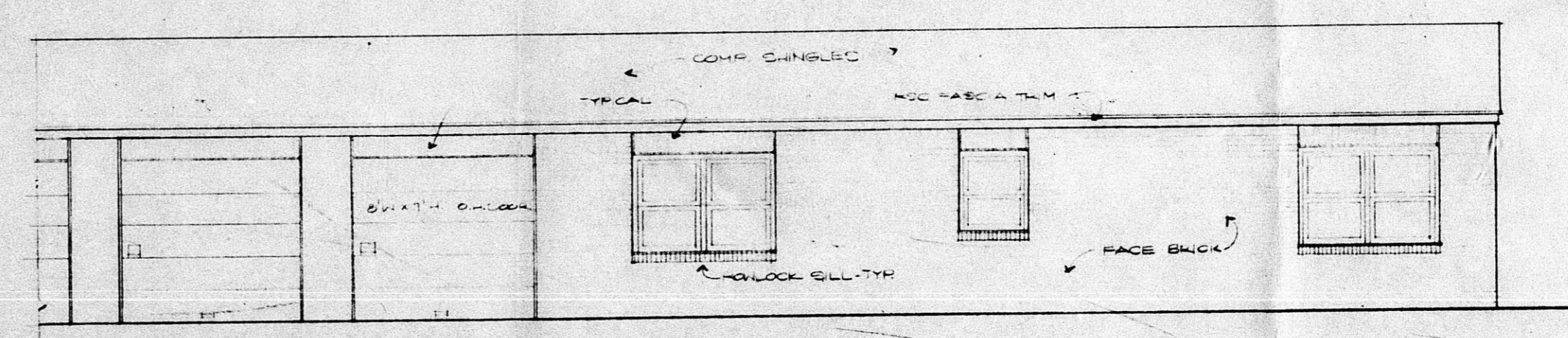
SITE DEVELOPMENT PLAN
1" = 50 FEET

LEGAL - LOTS 1, 2 & 3,
ROBERT HAYS ADDITION,
WICHITA, SEDGWICK COUNTY,
KANSAS.

BZA 5-91



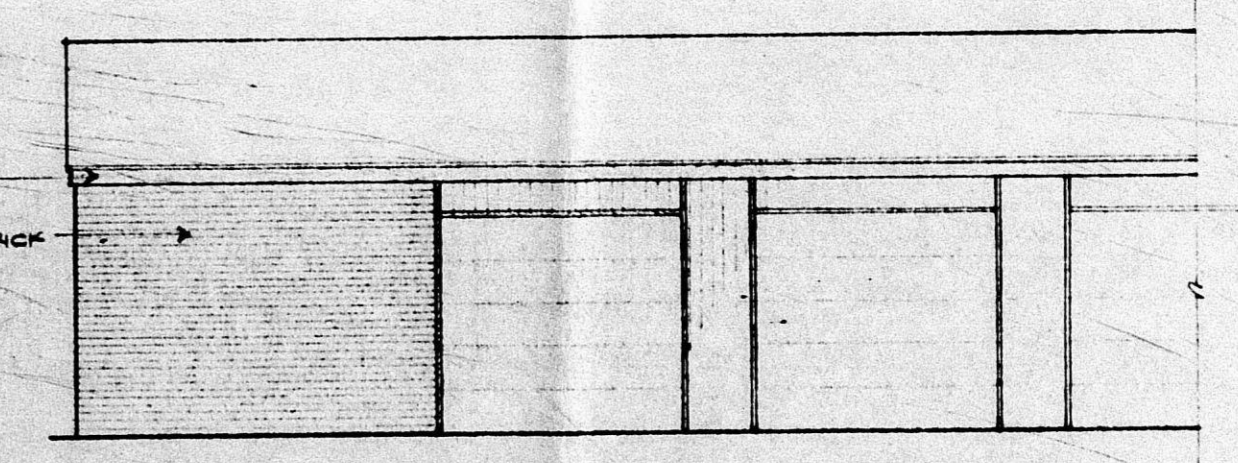
"D" TYP. END ELEV. - NO DOORS



"C" TYP. MANAGERS UNIT ELEVATION



"B" TYP. END ELEV. - WITH DOORS



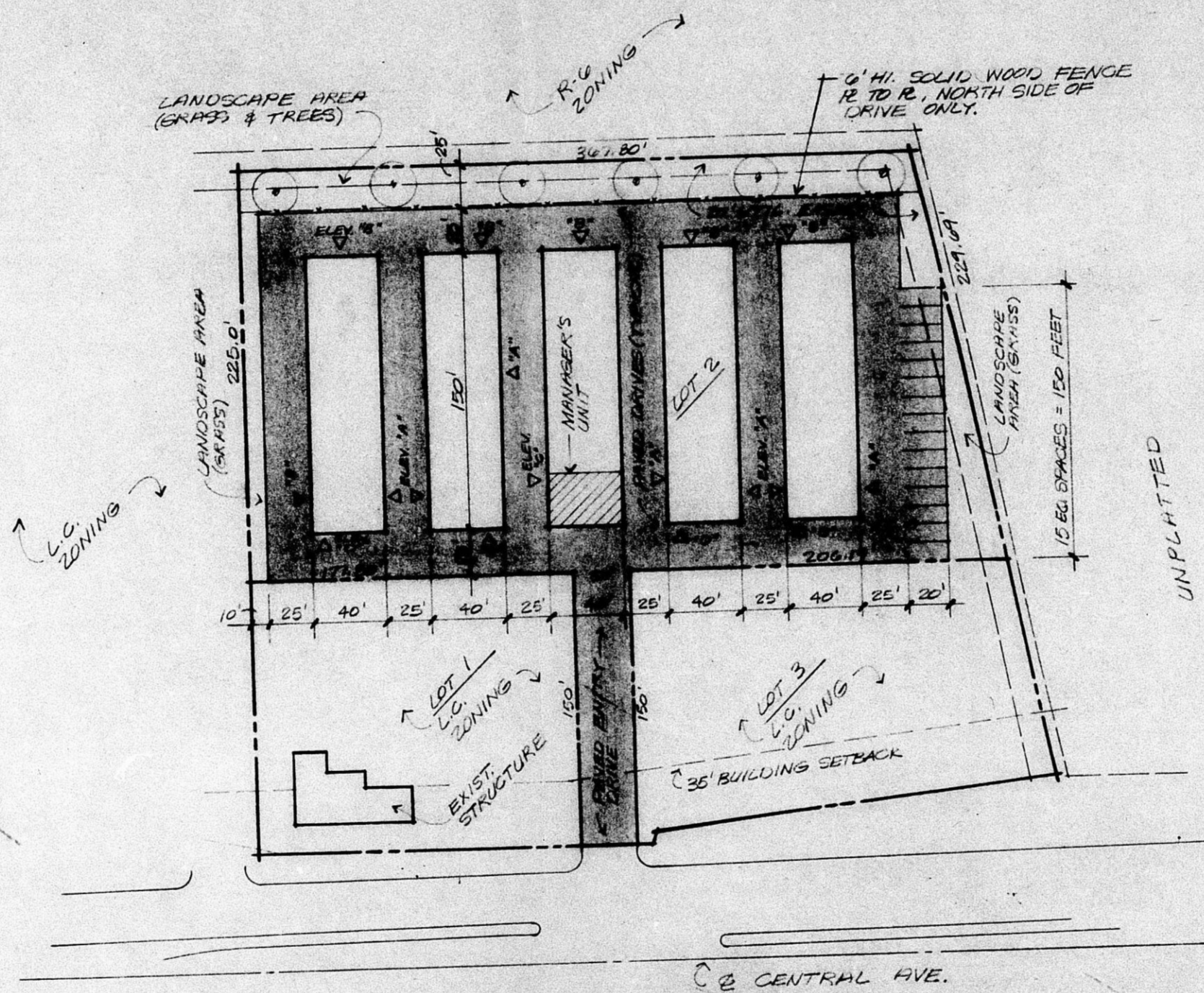
"A" TYP. SIDE ELEV. - STORAGE

BZA 5-91

RODGERA BROOKS
ARCHITECTS, P.A.
318 E. 10th St.
Wichita, KS 67202
Tel: 316-261-1111

2

FILMED FROM THE BEST AVAILABLE COPY



SITE DATA

| | |
|-------------------|-----------|
| ACRES IN SITE | 2.12 A. |
| S.F. CONSTRUCTION | 20,000 SF |
| PARKING REQ'D | 15 |
| PARKING PROVIDED | 15 |

SITE DEVELOPMENT PLAN
 1" = 50 FEET

LEGAL - LOTS 1, 2 & 3
 ROBERT HAYS ADDITION
 NICHITA, SEDGWICK COUNTY,
 KANSAS.

ROBERT HAYS ADDITION
 NICHITA, SEDGWICK COUNTY,
 KANSAS.

7/13/81

1
 2