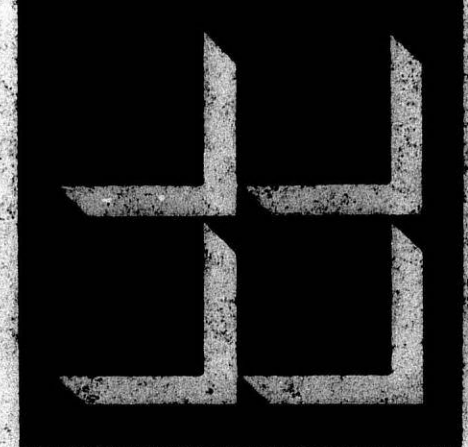
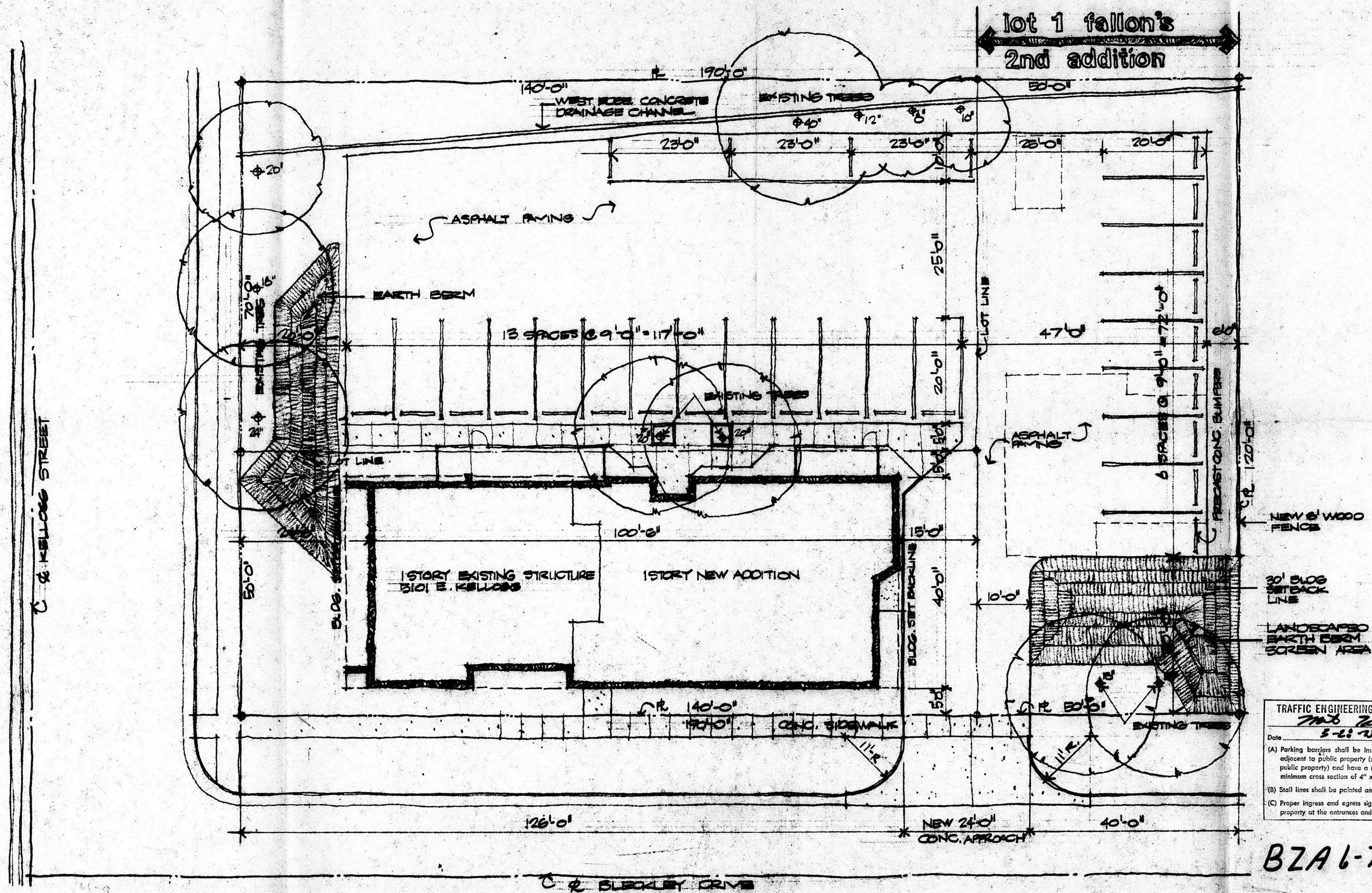


B7A1-75



GOSSEN LIVINGSTON  
PESCE P.A.

228 PATTE, P.O. BOX 11245, WICHITA, KANSAS 67211  
ARCHITECTS AND ENGINEERS



TRAFFIC ENGINEERING DIVISION APPROVED

*M. B. Kelly*

Date: 5-23-75

- (A) Parking barriers shall be installed at all locations adjacent to public property (so that vehicles will not enter public property) and have a minimum length of 6 feet and a minimum cross section of 4" x 4".
- (B) Stall lines shall be painted and 4" or greater in width.
- (C) Proper ingress and egress signs shall be installed on private property at the entrances and exits of the parking facility.

B7A1-75



SITE PLAN  
**medical offices**

REQUIRED PARKING	7 SPACES
STAFF & DOCTORS	11 SPACES
1800 SF - 1200 SF = 10,17 SF	25 SPACES
PARKING SPACES PROVIDED	25 SPACES

MEDICAL OFFICE FOR  
GEORGETOWN, MO.

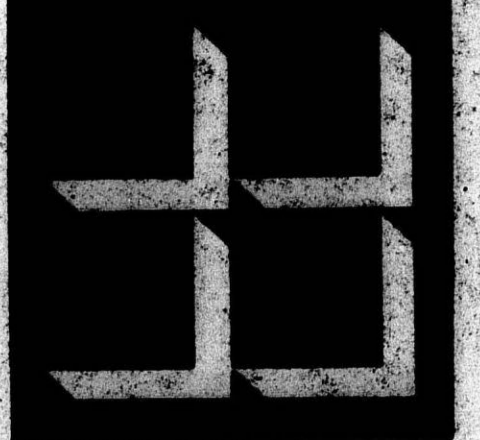
DR. E. KELLORS  
WICHITA, KANSAS

SITE PLAN

DATE: 5-23-75  
DRAWN BY: [Signature]  
CHECKED: [Signature]

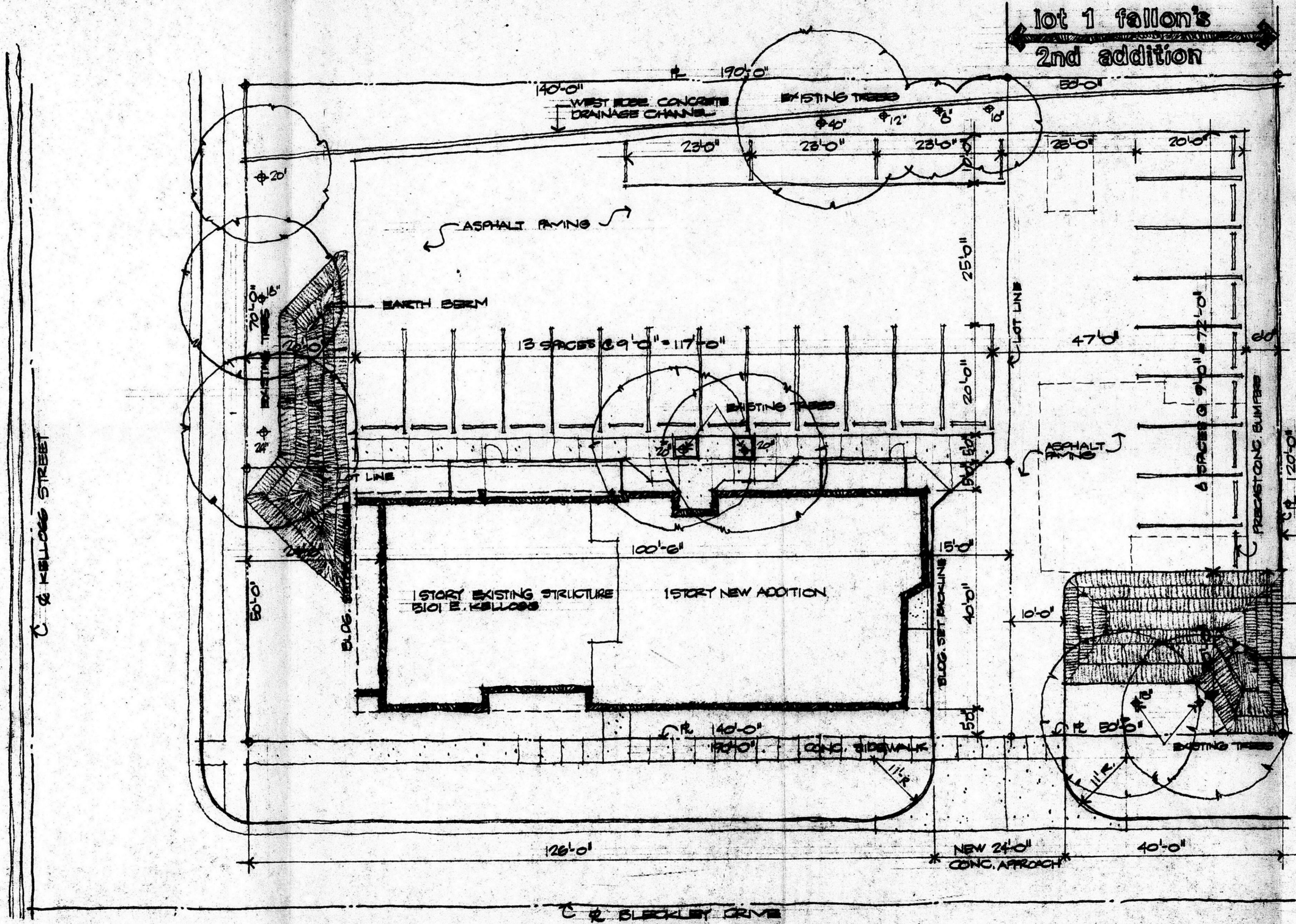
FILED FROM THE BEST  
AVAILABLE COPY

BZA 1-75



GOSSEN LIVINGSTON  
PESCE P.A.

238 PATTE, CO. BLD. 11281, WICHITA KANSAS 67217  
ARCHITECTS AND ENGINEERS 316-263-9347



TRAFFIC ENGINEERING DIVISION APPROVED  
*7/18 Allen*  
 5-28-75  
 Date  
 (A) Parking spaces shall be identified at all locations adjacent to public property (so that vehicles will not obstruct public property) and have a minimum length of 6 feet and a minimum cross section of 4" x 4".  
 (B) Stall lines shall be painted and 4" or greater in width.  
 (C) Proper ingress and egress signs shall be installed on private property at the entrances and exits of the parking facility.

BZA 1-75



# SITE PLAN medical offices

REQUIRED PARKING  
 STAFF & DOCTORS  
 228 SF = 20 SPACES  
 1217 SF = 10 SPACES  
 PARKING SPACES PROVIDED  
 9 SPACES  
 11 SPACES  
 20 SPACES  
 29 SPACES

DATE 11/7  
 DATE 2-28-78  
 DRAWN WEL  
 CHECKED

FILMED FROM THE BEST AVAILABLE COPY