

B749-77

Date	Revision	By

TRAFFIC ENGINEERING DIVISION APPROVED
Bob Muth
 3/11/79

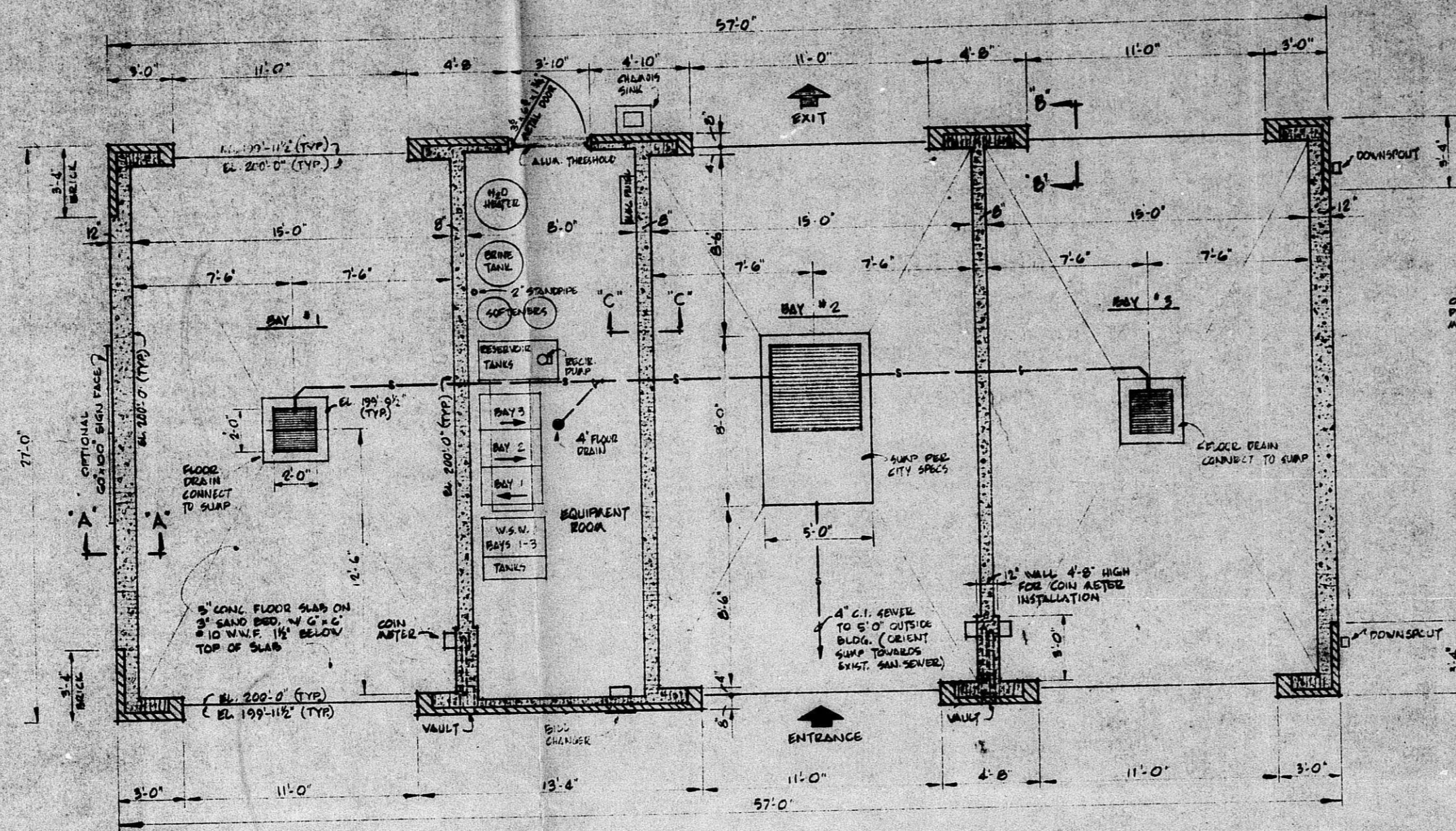
(A) Parking markers shall be installed at all locations that are adjacent to public property (so that vehicles will not encroach upon public property) and have a minimum length of 6 feet and a minimum clear width of 4' x 4'.
 (B) Stall lines shall be painted and 4" or greater in width.
 (C) Proper ingress and egress shall be maintained on private property at the entrance and exits of the parking facility.

B749-77

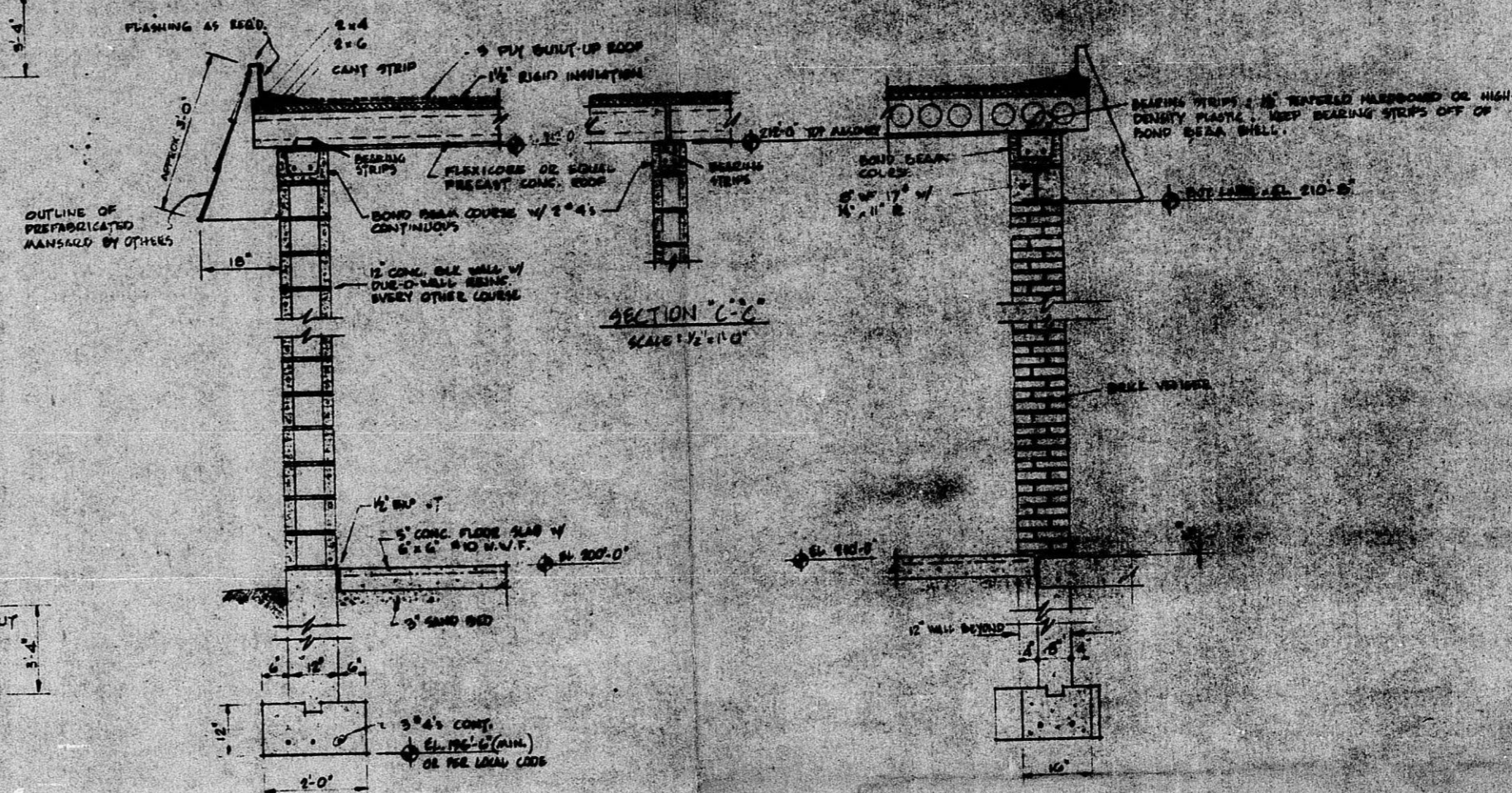
Amoco Oil Company
Western Region
 8828 Santa Fe, Overland Park, Kansas

LAYOUT
ROCK ROAD & HARRY RD.
WICHITA, KANSAS

Prepared By: Mr. Capital Investment	Date: 11-8-78	Checked By: Dist. Mgr.
Signature of Marketing Regional Vice-President	Scale: 1" = 10'-0"	Drawn By: JN
	Sheet Number: 7407	Record Key Number:



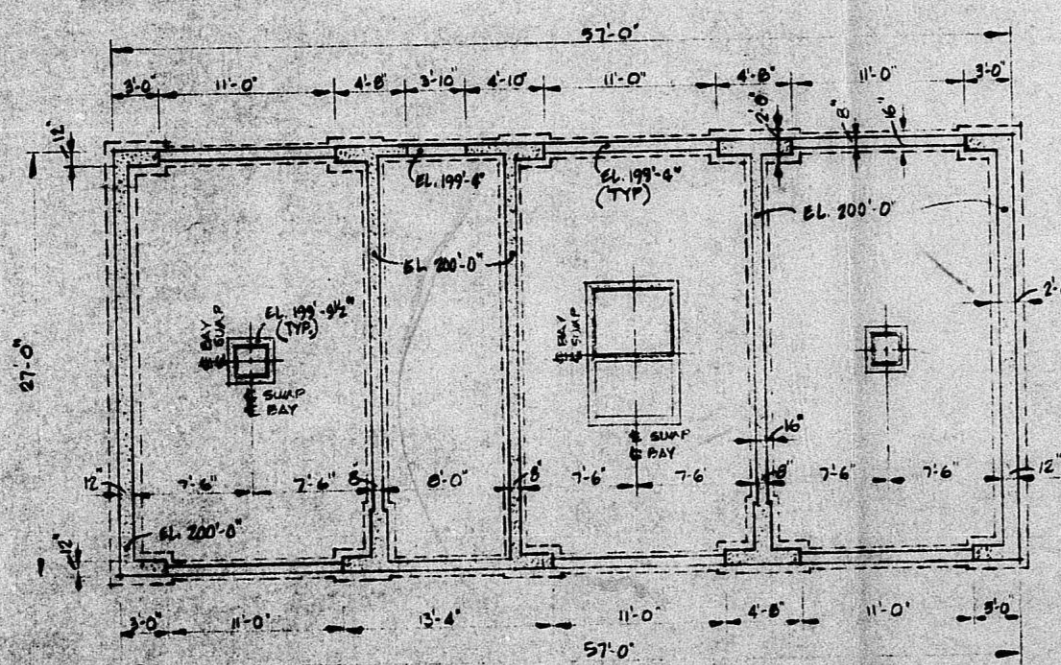
- FLOOR PLAN -
SCALE: 1/8" = 1'-0"



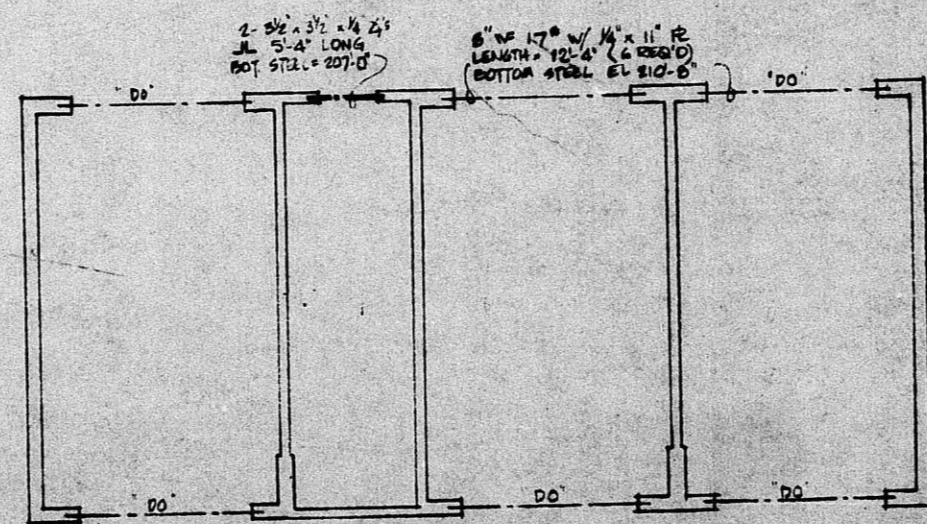
- SECTION A-A -
SCALE: 1/8" = 1'-0"

- SECTION B-B -
SCALE: 1/8" = 1'-0"

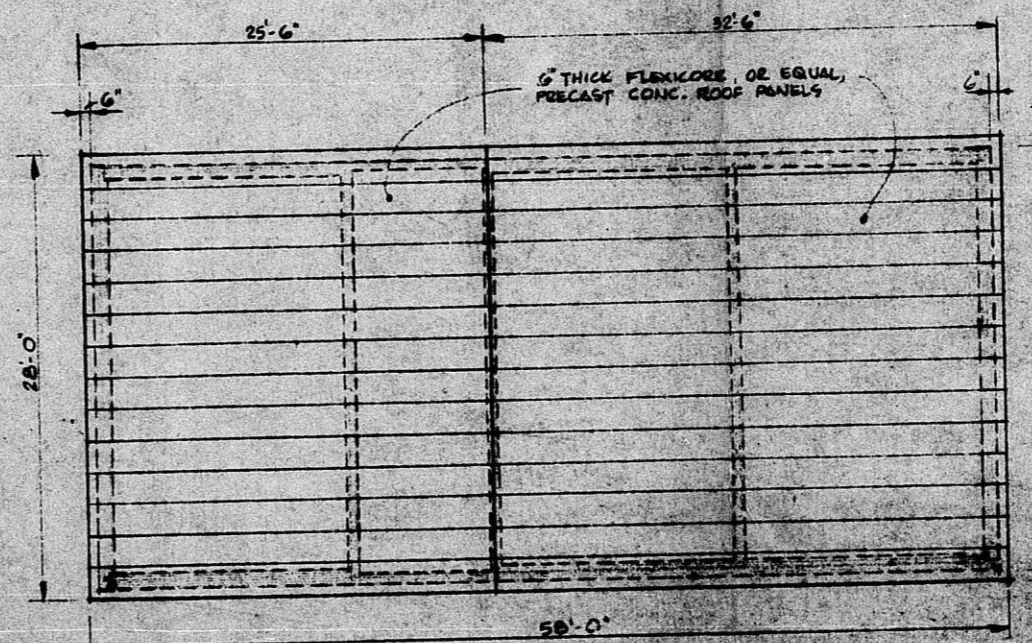
NOTE:
CONCRETE SLAB AT ALL BEARING POINTS UNDER LIGHTLY
SHALL BE EITHER SOLID, COMBINED UNIT, OR COMB UNIT
MAINTAIN ALL CELL COMPARTMENT SHALL BE MAINTAINED FROM
FOUNDATION TO THE HEIGHT OF BEARING. ALL SOLID
UNITS SHALL EXTEND HIGH ENOUGH TO BE MAINTAINED ON
OTHER SIDE OF JOINTS AND BEARING POINTS



- FOUNDATION PLAN -
SCALE: 1/8" = 1'-0"



- STEEL FRAMING PLAN -
SCALE: 1/8" = 1'-0"



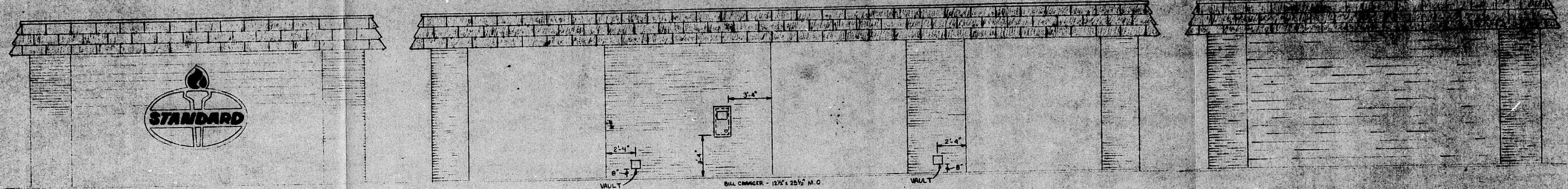
- PRE-CAST CONC. ROOF LAYOUT -
SCALE: 1/8" = 1'-0"

874977

27x57x5 BAY WASH
27x57x5 PRE-CAST CONC.
ROOF PANELS

NO.	REV.	DATE	BY	CHKD.

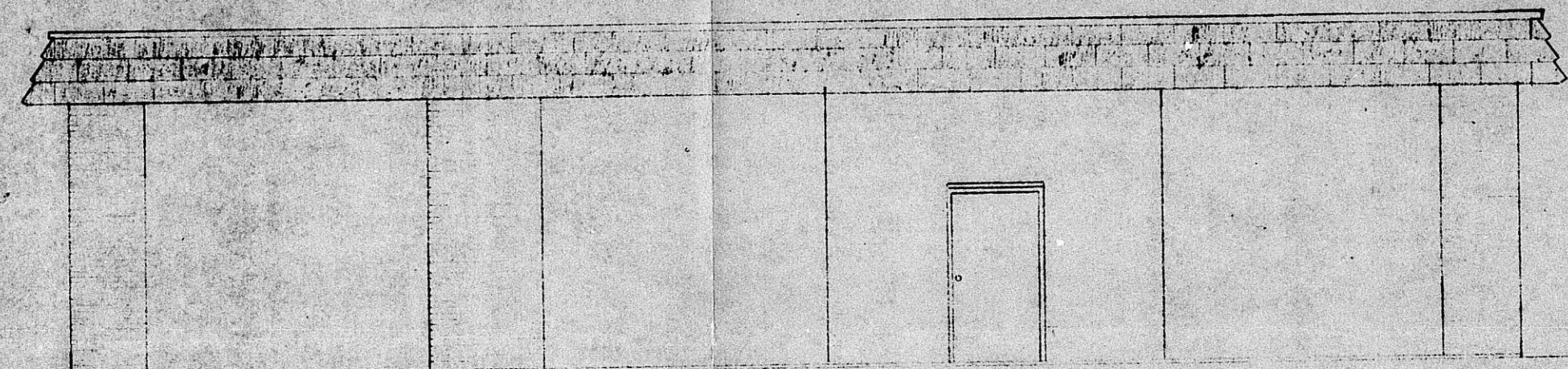
BZA 9-79



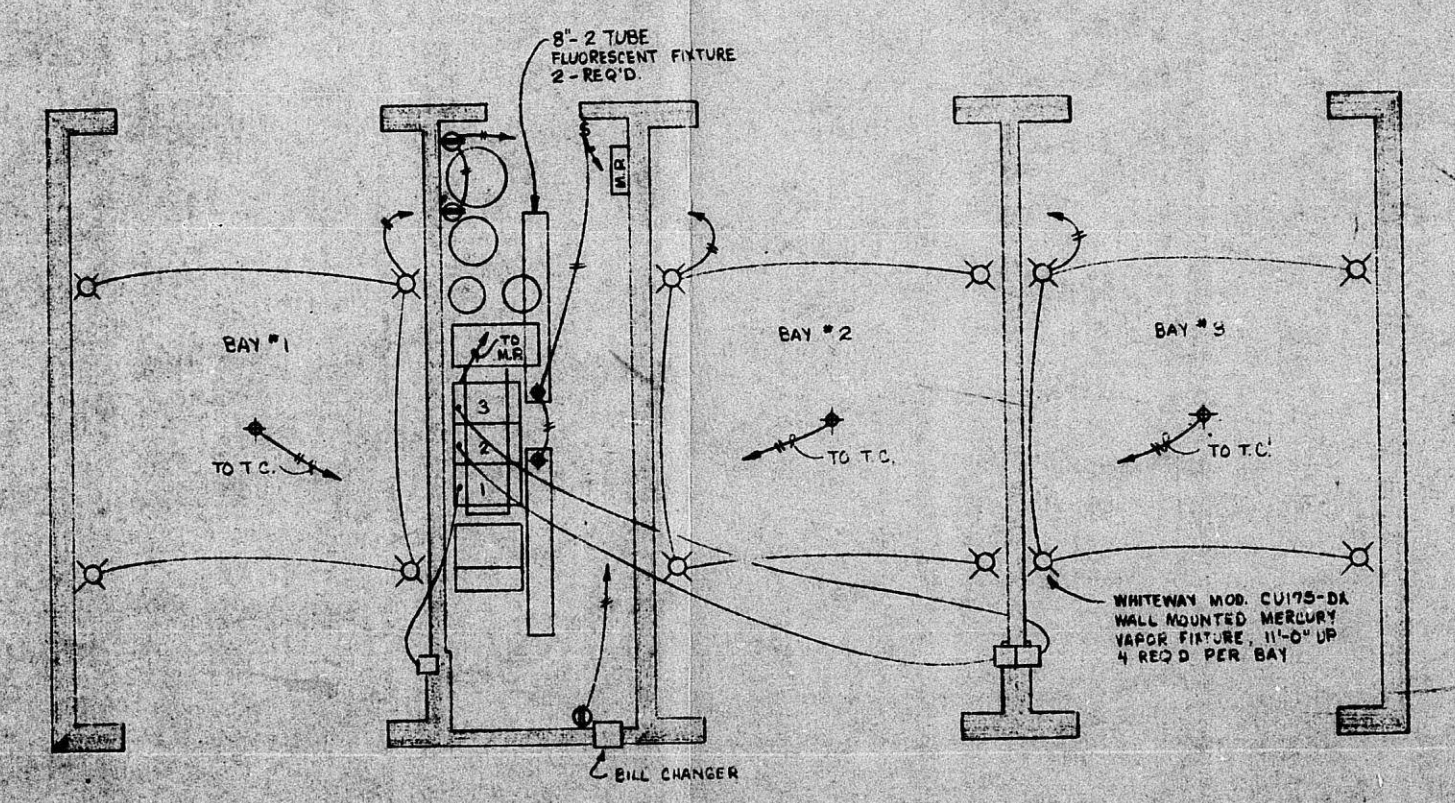
LEFT SIDE ELEV.
SCALE: 1/4" = 1'-0"

FRONT (ENTRANCE) ELEV.
SCALE: 1/4" = 1'-0"

RIGHT SIDE ELEV.
SCALE: 1/4" = 1'-0"



REAR (EXIT) ELEV.
SCALE: 1/4" = 1'-0"



ELECTRICAL PLAN
SCALE: 1/8" = 1'-0"

BZA 9-79

27' x 57' 3 BAY WASH	
BLDG W/ PRECAST CONC	
ROOF PANELS	
DATE	BY
NO.	REV.