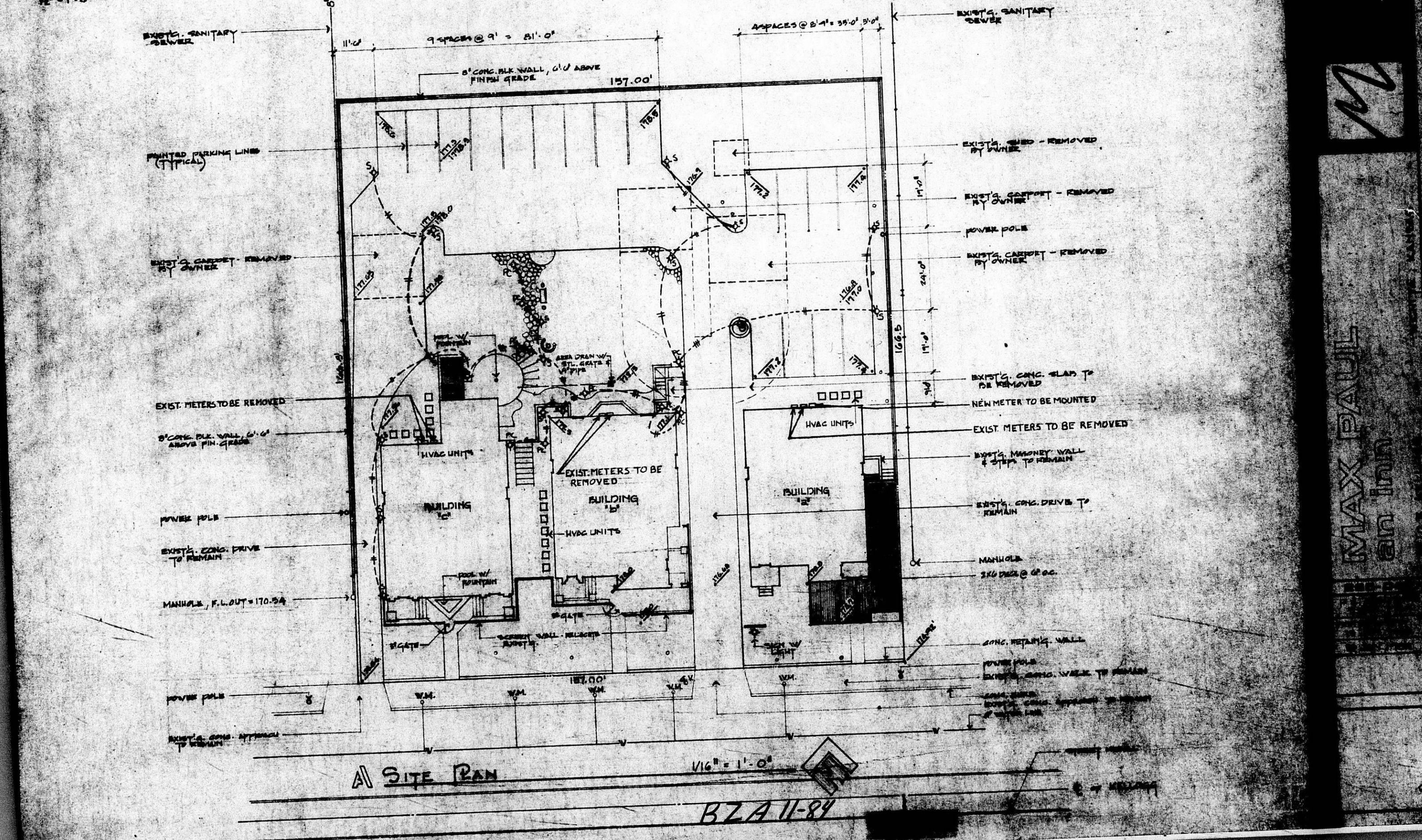


LEGAL DESCRIPTION
 SECTION 10, TOWNSHIP 14N, RANGE 10E, COUNTY OF ...
FINCH MARK
 TOP OF FINCH MARK IS AT ...
GRADE MARK
 EXISTING GRADE
 NEW GRADE



A SITE PLAN
 1/16" = 1'-0"
 B7A 11-87

J. Craig Mann

M

MAX PAUL
 CIVIL ENGINEER