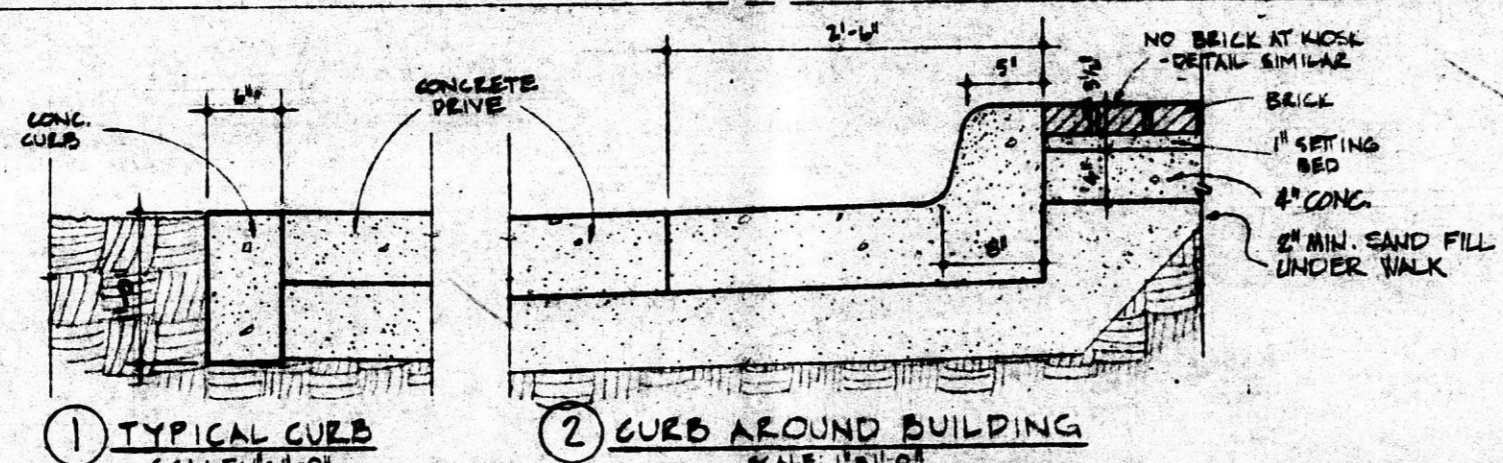


NOTE: TO REMOVE CONC. ALLEY ON SITE AND EXIST. DRIVE AND ALLET APPROACHES FROM HYDRAULIC. REPLACE CURB, WATER AND 4 FT. WALK, AS SHOWN, ALONG HYDRAULIC. ALSO REMOVE CONC. ALLET APPROACH FROM SOUTH PROPERTY LINE TO FANNING. REPLACE CURB, WATER AND 4 FT. WALL AT FANNING AS REQUIRED.

NOTE: ALL TREES AND SHRUBS ON SITE TO BE REMOVED BY GENERAL CONTRACTOR.  
GROUND WATER AT APPROX. 18 FT. BELOW TOP OF TEST HOLES #1 & #2. POSSIBLE HIGH WATER LEVEL (SAND CAVES IN) AT APPROX. 13 FT. BELOW TOP OF TEST HOLES #1 & #2.



### SITE PLAN

SCALE: 1/8" = 1'-0"



### LEGEND

TEST HOLE	⬇
EXISTING CURB	—
PROPERTY LINE	—
SEWERY LINE	SS
GAS LINE	G
ELECT. & TELE. LINE	FT
ELECT. LINE	P
WATER	W
EXISTING CONTOUR	---
NEW CONTOUR	---
EXISTING ELEVATION	⬆
NEW ELEVATION	⬆

LEGAL DESCRIPTION:  
LOT 1, MICHAEL'S ADDITION  
WICHITA, SEDGWICK COUNTY, KANSAS

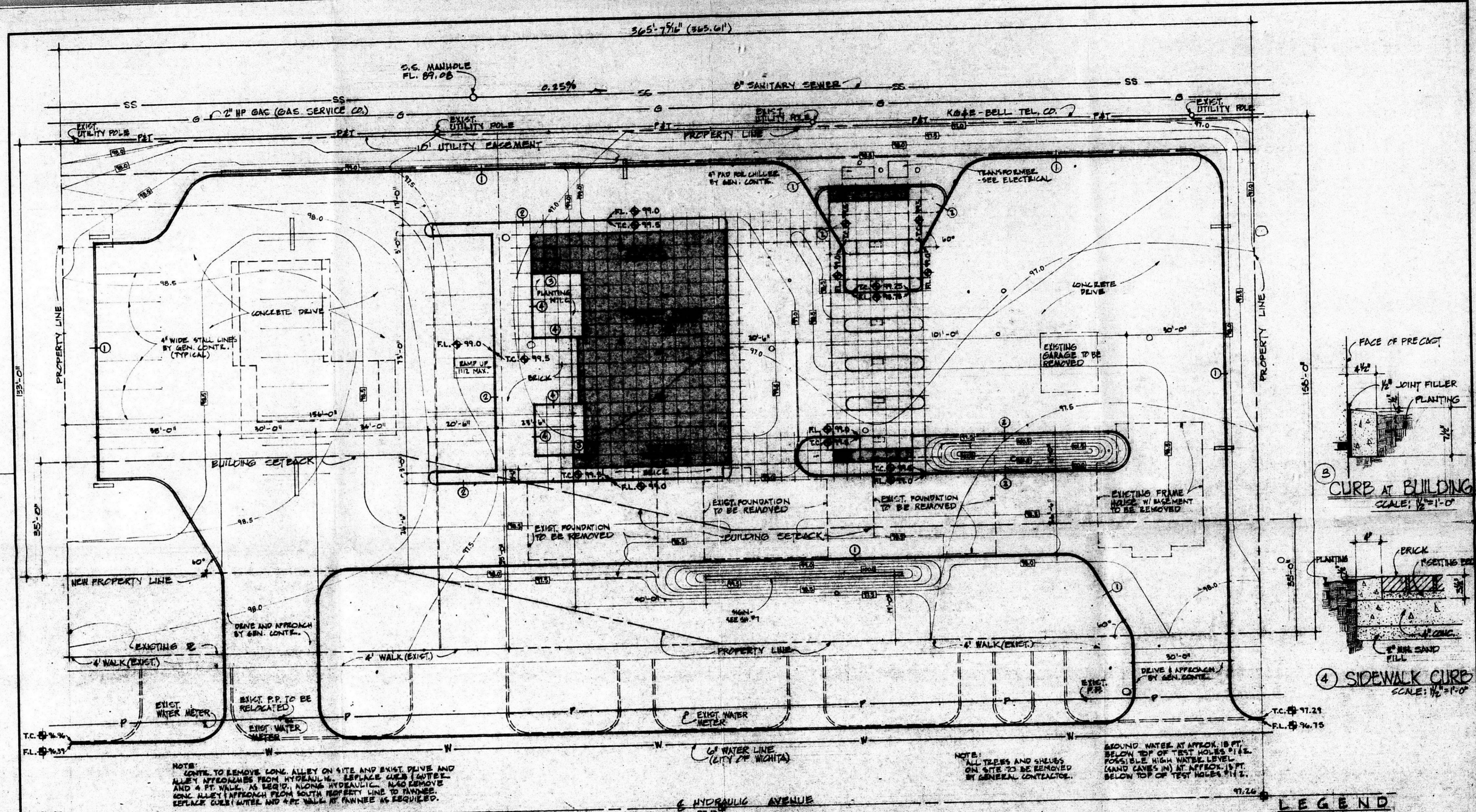
**MCVAY SCHMIDT ALLEN ARCHITECTS AND PLANNERS**  
1133 EAST SECOND STREET WICHITA KANSAS 67214

DETACHED FACILITY FOR  
UNITED AMERICAN BANK AND TRUST CO  
WICHITA KANSAS



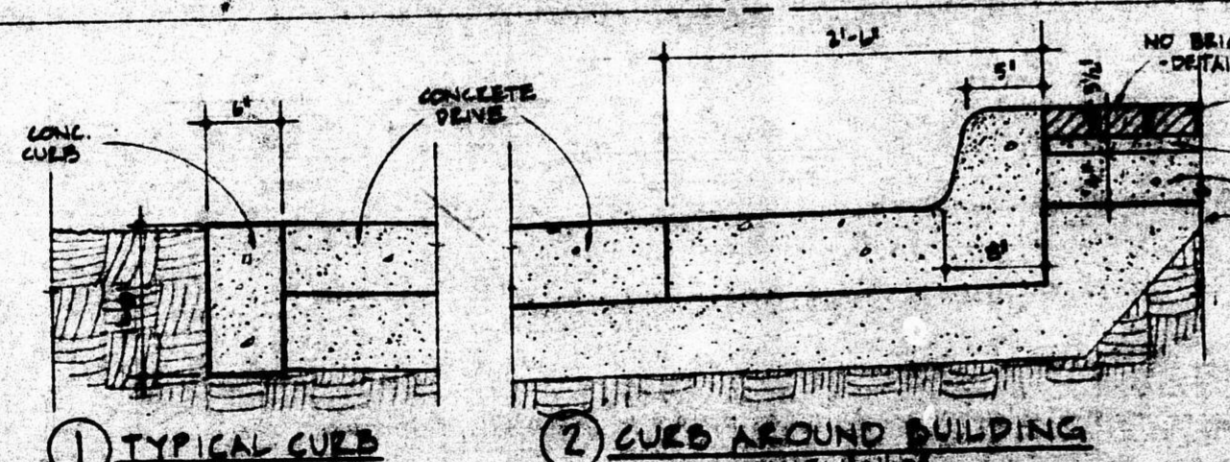
JOB NO: 765  
DATE: FEB. 1976  
DRN: T.E.P.  
CED: K.D.H. 02/15

FILMED FROM THE BEST AVAILABLE COPY

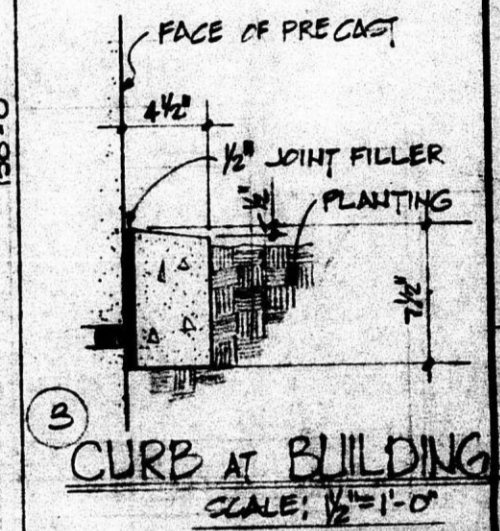


NOTE: OWNER TO REMOVE CONC. ALLEY ON SITE AND EXIST. DRIVE AND ALLEY APPROACH FROM HYDRAULIC. REPLACE CURB (SOUTH) AND 4" WALK, AS SHOWN, WITH HYDRAULIC. ALSO REMOVE CONC. ALLEY APPROACH FROM SOUTH PROPERTY LINE TO PARALLEL. REPLACE CURB (WALK) AND 4" WALK AT PARALLEL AS REQUIRED.

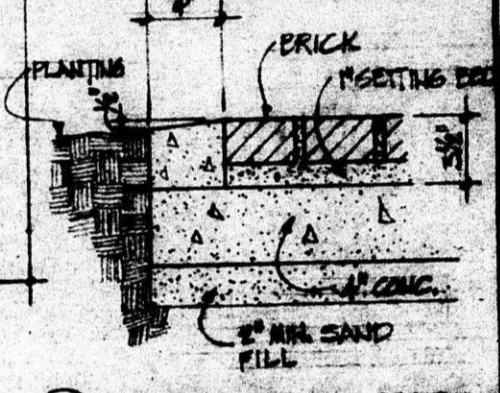
NOTE: ALL TREES AND SHRUBS ON SITE TO BE REMOVED BY GENERAL CONTRACTOR.  
GROUND WATER AT APPROX. 18 FT. BELOW TOP OF TEST HOLES #1 & #2. (5.5' HIGH WATER LEVEL. SAND CAME IN) AT APPROX. 17 FT. BELOW TOP OF TEST HOLES #1 & #2.



1 TYPICAL CURB SCALE: 1/2" = 1'-0"  
2 CURB AROUND BUILDING SCALE: 1/2" = 1'-0"



3 CURB AT BUILDING SCALE: 1/2" = 1'-0"



4 SIDEWALK CURB SCALE: 1/2" = 1'-0"

**LEGEND**

TEST HOLE	○
EXISTING CURB	—
PROPERTY LINE	SS
SANITARY SEWER	SS
GAS LINE	G
ELECT. & TEL. LINE	PAT
ELECT. LINE	P
WATER	W
EXISTING CONTOUR	W.O.
NEW CONTOUR	NEW
EXISTING ELEVATION	○
NEW ELEVATION	△

**SITE PLAN**  
SCALE: 1/4" = 1'-0"



LEGAL DESCRIPTION:  
LOT 1, MICHAEL ADDITION  
WICHITA, SEDGWICK COUNTY, KANSAS

**McVAY SCHMIDT ALLEN ARCHITECTS AND PLANNERS**  
1133 EAST SECOND STREET WICHITA KANSAS 67214

DETACHED FACILITY FOR UNITED AMERICAN BANK AND TRUST CO. WICHITA KANSAS



JOB NO: 745  
DATE: FEB. 1976  
DRAFT: T.E.P.  
CHECK: P.P.M.

FILMED FROM THE BEST AVAILABLE COPY