

S I T E P L A N

SCALE: 1" = 50'

TRAFFIC ENGINEERING DIVISION APPROVED
 Date: 7-25-69
 (A) Parking barriers shall be installed at all locations that are adjacent to public property (so that vehicles will not obstruct public property) and have a minimum length of 6 feet and a minimum cross section of 4" x 4".
 (B) Stall lines shall be painted and 4" or greater in width.
 (C) Proper ingress and egress signs shall be installed on private property at the entrance and exits of the parking facility.

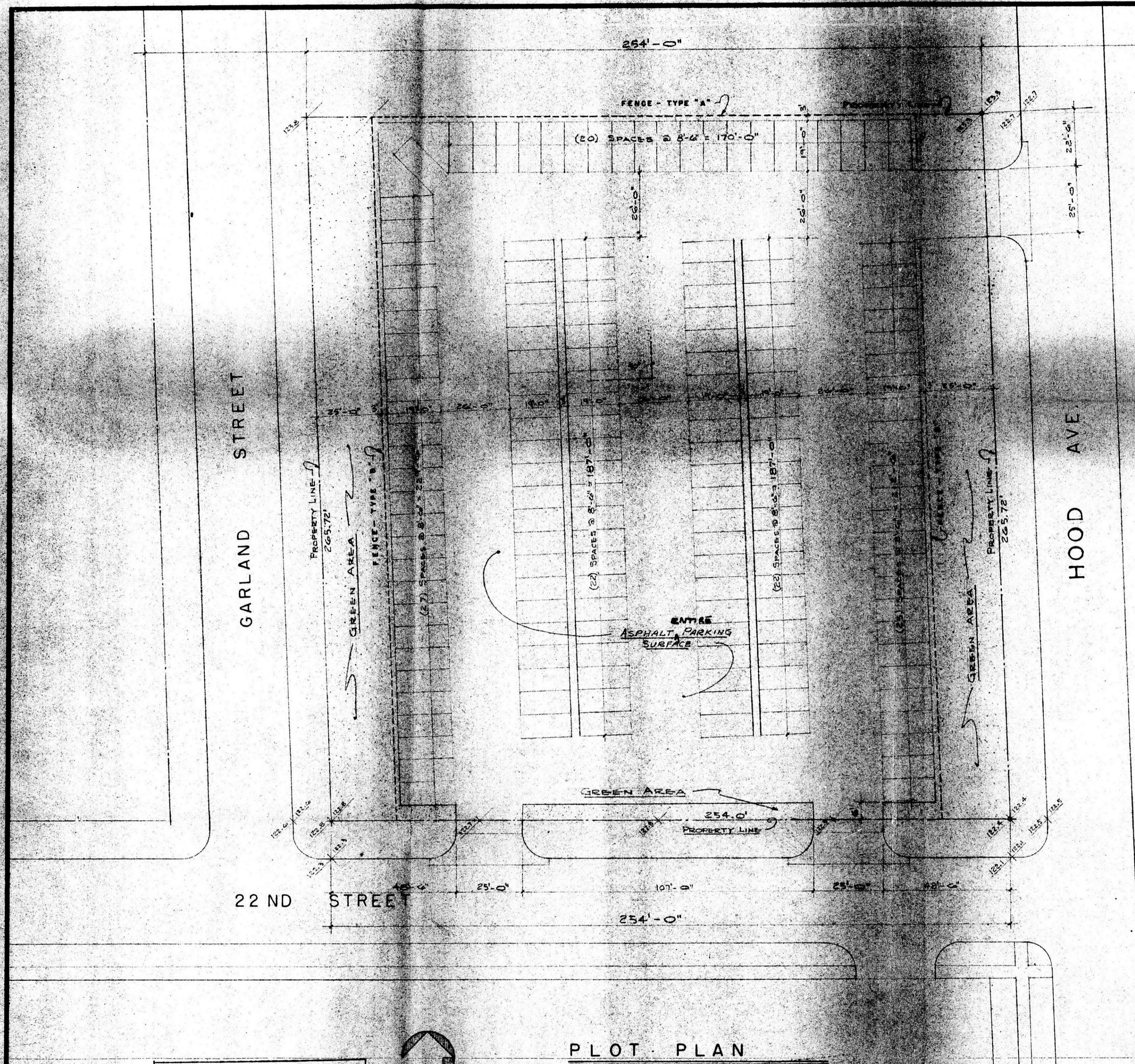
OFFICE COPY
 DO NOT REMOVE

BZA 18-69

HANNEY BUNDERS & ASSOC. ARCHITECTS
 1014 W. WASHINGTON BLVD.
 WICHITA, KANSAS 67202

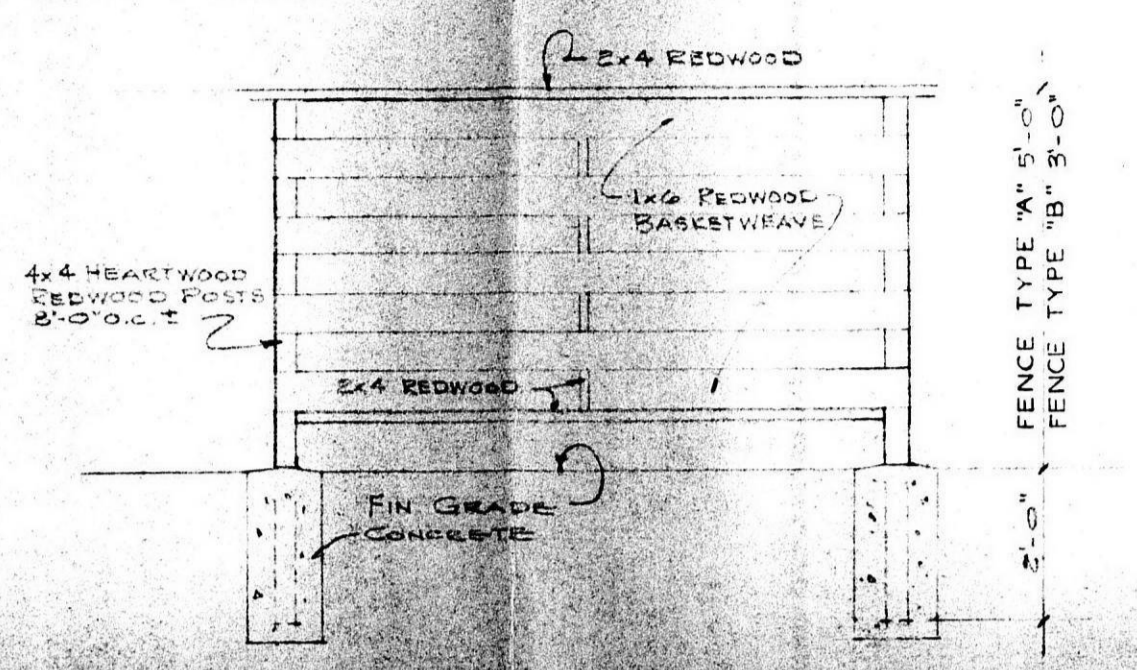
SHEET

FILMED FROM THE BEST AVAILABLE COPY



PLOT PLAN
SCALE 1" = 20'-0"

TRAFFIC ENGINEERING DIVISION APPROVED
 Date: 11-22-72
 (A) Parking barriers shall be installed at all locations that are adjacent to public property (so that vehicles will not obstruct public property) and have a minimum length of 6 feet and a minimum cross section of 4" x 4".
 (B) Stair lines shall be painted and 4" or greater in width.
 (C) Proper ingress and egress signs shall be installed on private property at the entrances and exits of the parking facility.



FENCE DETAILS

ALTERNATE DESIGN
 PROVIDE & INSTALL A SOLID FENCE CONSTRUCTED OF STAGGERED ROUGH SAWN CEDAR BOARDS.

DRIVERWAYS:

Provide all labor and materials necessary to construct the three (3) commercial drive-ways indicated on the Plans in strict accordance with the city of Wichita specifications codes and regulations.

PRE-CAST CURBS:

Provide and install at each parking stall indicated on the Plans, one (1) pre-cast curb. Total required: 161.

OPEN AREAS:

Landscape with grass, trees and shrubs.

ASPHALT PAVING:

- A. After rough grading areas to proper grade to receive base course and asphalt surfacing, subgrade to depth of 4", water and thoroughly roll with heavy sheep-foot or pneumatic tire packer to achieve maximum density.
- B. Base Course:
 1. Aggregate-binder course, conforming to Section 27 of Standard Specifications of the Kansas State Highway Commission, current edition.
 2. Materials conforming to Section 101 of the Standard Specifications for Type AB-3.
 3. Water and roll base course to 94% Standard Density.
 4. Construct base course to thickness of 4", true to grade, dimensions and sections, as indicated, with a surface vertical tolerance of 1/8", plus or minus, at any point.
 5. Prime base course with materials and methods conforming to Section 38 of the Standard Specifications. Follow with asphalt surface course not more than 48 hours. Should free asphalt persist, blot with fine, dry sand.
- C. Asphalt Surface Course:
 1. Single course of Sheet Asphalt, Class 3 (hot mix), constructed on the prepared base course, conforming with Section 45 of the Standard Specifications of the Kansas State Highway Commission, current edition.
 2. Bituminous material, conforming to Section 107 of Standard Specifications, grade AC-3.
 3. Aggregate, conforming to Section 97 of Standard Specifications, Type HM-4 or HM-6 (optional with Contractor).
 4. Preparation of base, conforming with Sub-article 46-4) of Standard Specifications.
 5. Construct surface of thickness of two (2) inches, true to grade, dimensions and sections as indicated. Finish the final surface with a tolerance of one-fourth (1/4) inch, measured as vertical ordinate from a ten (10) foot straight edge. Conform to proper drainage, with no area retaining water.
 6. Before placing mixture against contact surfaces of cold curbs and other dissimilar materials, prime same with thin uniform coat of hot asphalt cement or asphalt emulsion dissolved in naphtha.
- D. Warranty:

Contractor shall and hereby does warrant paving against disintegration of the surfacing and forming of sink holes for a period of one year after final acceptance.

REVISED OFF-STREET PARKING PLAN FOR
 WILLIAM F. FARHA
 WICHITA, KANSAS
 HANNEY-SANDERS & ASSOC. ARCHITECTS
 1515 22ND STREET, WICHITA, KANSAS 67202
 AUG 10, 1972
 SHEET 1 OF 1

FILMED FROM THE BEST AVAILABLE COPY