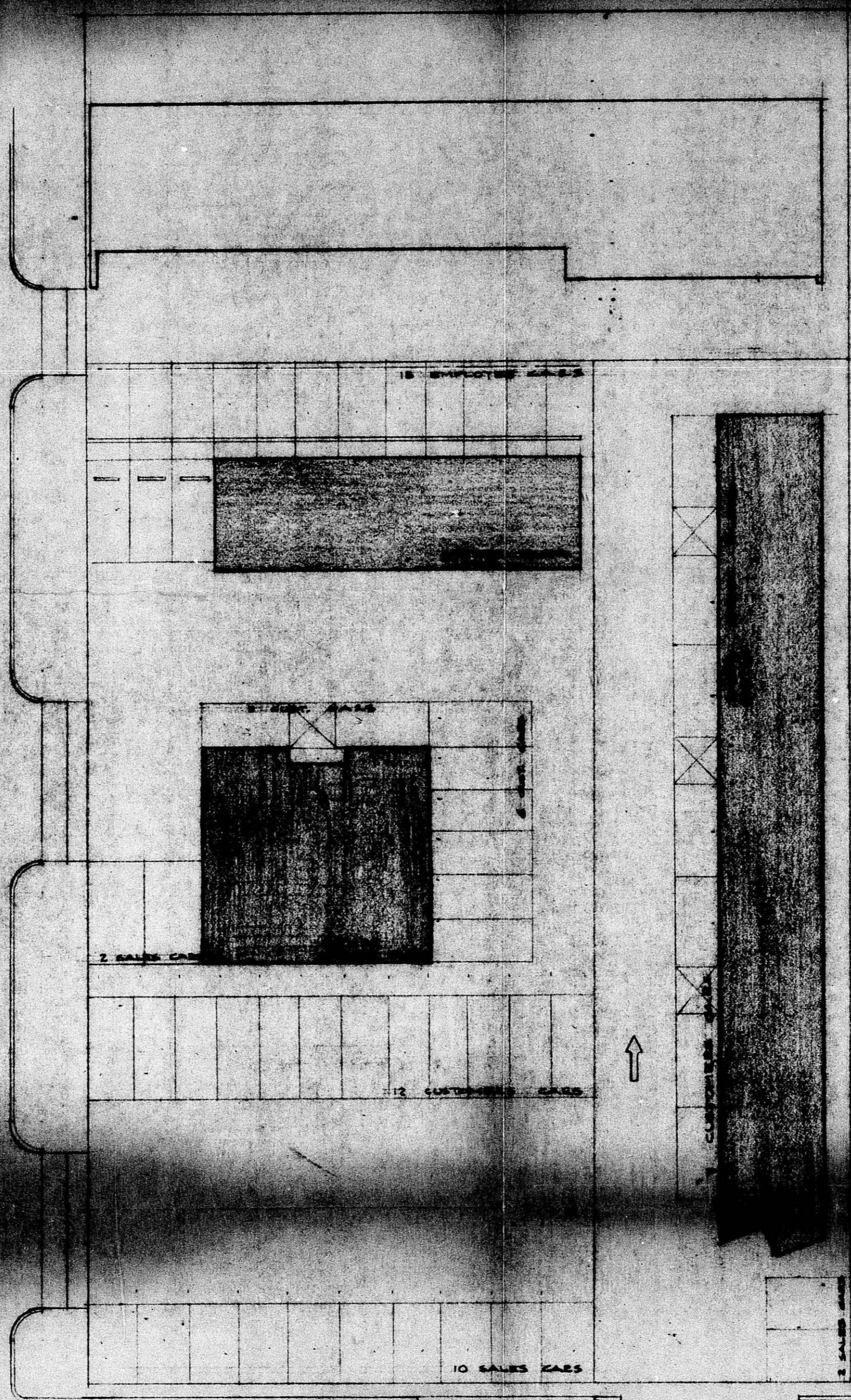


APPROVED
CENTRAL INSPECTION DIVISION
CITY OF WICHITA
Date: 2-24-72, By: [Signature]

$\frac{(5714)(.50)}{(10)(3)} = 13 \text{ spans}$
72172
[Signature]



KELLOGG SERVICE CO.

S I T E P L A N 1/8" = 1'-0"

BZA 21-72

162
20

RECEIVED