

GENERAL PLANTING NOTES

- PRIOR TO BEGINNING ANY WORK ON THE SITE, THE CONTRACTOR SHALL CONTACT THE OFFICE OF THE OWNER AND THE ARCH./LANDSCAPE ARCH. FOR SPECIFIC INSTRUCTIONS RELEVANT TO THE SEQUENCING OF THE WORK.
- LANDSCAPE CONTRACTOR SHALL PROVIDE ALL LABOR, MATERIALS AND SERVICE NECESSARY TO FURNISH AND INSTALL PLANTINGS AS SPECIFIED HEREIN AND AS SHOWN ON THESE PLANS.
- NO MATERIAL SUBSTITUTIONS SHALL BE MADE WITHOUT LANDSCAPE ARCH. OR OWNER'S REPRESENTATIVE'S APPROVAL. ALTERNATE MATERIALS OF SIMILAR QUALITY MAY BE CONSIDERED IF SPECIFIED PLANT MATERIALS CANNOT BE OBTAINED. LANDSCAPE ARCH. RESERVES THE RIGHT TO REVERSE PLANT LIST AS DEEMED NECESSARY.
- ALL PLANT LOCATIONS ARE APPROXIMATE. ADJUST AS NECESSARY TO AVOID CONFLICTS.
- UTILITIES HAVE BEEN SHOWN ON THE PLAN FOR ROUGH LOCATION OF SERVICES. CONTRACTOR SHALL LOCATE ALL UTILITIES BEFORE WORK. CONTRACTOR WILL BE RESPONSIBLE FOR THE REPAIR OF ANY DAMAGE HE MAY CAUSE TO UTILITIES.
- SOO/SEED TYPE SHALL BE LOCALLY AVAILABLE BERMOUDAGRASS OR OTHER TURF GRASS RECOMMENDED FOR THE NEW PORT RICHEY, FLORIDA AREA.
- RE-ESTABLISH TURF IN AREAS DISTURBED BY GRADING OR UTILITY TRENCHING IN THE R.O.W.
- RE-ESTABLISH TURF IN ALL AREAS DISTURBED BY THE CONSTRUCTION PROCESS AND WITHIN THE LIMITS OF DISTURBANCE BY SEED, SOO OR PLANNED PLANTING AREAS, AS NOTED ON PLAN.
- BACKFILL FOR PLANT EXCAVATIONS TO BE CLEAN NATURAL SOIL, EXCAVATED FROM PLANTING PITS MIXED WITH COMPOST AND WELL-ROTTED MANURE AT A RATIO OF THREE (3) PARTS SOIL TO ONE (1) PART COMPOST AND WELL-ROTTED MANURE.
- FERTILIZE ALL PLANTS WITH 6-10-4 COMMERCIAL FERTILIZER AS DIRECTED BY INSTRUCTIONS ON FERTILIZER.
- ALL PLANT MATERIALS SHALL HAVE BACKFILL CAREFULLY PLACED AROUND BASE AND SIDES OF BALL TO TWO-THIRDS (2/3) DEPTH OF BALL, THEN THOUGH SOIL REMOVED. BURLAP FASTENERS AND LOOSE BURLAP AROUND BASE OF TRUNK SHALL BE REMOVED AT THIS TIME. REMAINDER OF PIT SHALL THEN BE BACKFILLED, ALLOWING FOR DEPTH OF MULCH, SAUCER AND SETTLEMENT OF BACKFILL. BACKFILL SHALL THEN BE THOROUGHLY WATERED ONCE AGAIN.
- ALL PLANT MATERIALS SHALL BE PROTECTED FROM THE DRYING ACTION OF THE SUN AND WIND AFTER BEING DUG, WHILE BEING TRANSPORTED, AND WHILE WAITING TO BE PLANTED. IMMEDIATELY SHALL BE PROTECTED FROM DRYING ACTION BY COVERING THEM WITH MOIST MULCH. PERIODICALLY APPLY WATER TO MULCH TO PREVENT DRYING. PERIODICALLY REMOVE MULCH TO INSURE PROPER PLANTING TO REDUCE TRANSPIRATION.
- STEEL EDGER BY "PROSTEEL, INC." EDGER TO BE 10 GAUGE (1/16" X 4" HIGH) AND PAINTED GREEN. INSTALL AS PER MANUFACTURER'S RECOMMENDATIONS. TOP OF EDGER TO ALIGN WITH SIDEWALK/CURB WHERE OCCURS. GRADE TO BE 1" BELOW TOP OF EDGER ON LAWN SIDE. REFER TO EDGER DETAIL.
- INSTALL SMALL HARDWOOD MULCH IN ALL PLANTING BEDS. SAMPLE OF MULCH SHALL BE PROVIDED PRIOR TO INSTALLATION.
- PLANTING BEDS RECEIVING MULCH IS TO BE FREE OF WEEDS AND GRASS. TREAT BEDS WITH A PRE-EMERGENT HERBICIDE PRIOR TO MULCH PLACEMENT. APPLY IN ACCORDANCE WITH STANDARD TRADE PRACTICE.
- PLACE 4" OF MULCH IN ALL TREE SAUCERS. AREAS RECEIVING MULCH ARE TO BE FREE OF WEEDS AND GRASS.
- THE CONTRACTOR SHALL PROVIDE ALL WATER, WATERING DEVICES AND LABOR REFERRED TO IRRIGATE PLANT MATERIALS UNTIL ACCEPTANCE OF THE PROJECT'S PLANT MATERIALS. THE CONTRACTOR SHALL SUPPLY ENOUGH WATER TO MAINTAIN THE PLANTS' HEALTHY CONDITION.
- LANDSCAPE CONTRACTOR TO REMOVE TREE STAKES AND ALL DEAD WOOD ON TREES ONE YEAR AFTER PROVISIONAL/FINAL ACCEPTANCE.
- REPORT ANY DISCREPANCIES IN THE PLANTING PLAN TO THE LANDSCAPE ARCHITECT PRIOR TO STARTING CONSTRUCTION.

LANDSCAPE CODE CALCULATIONS

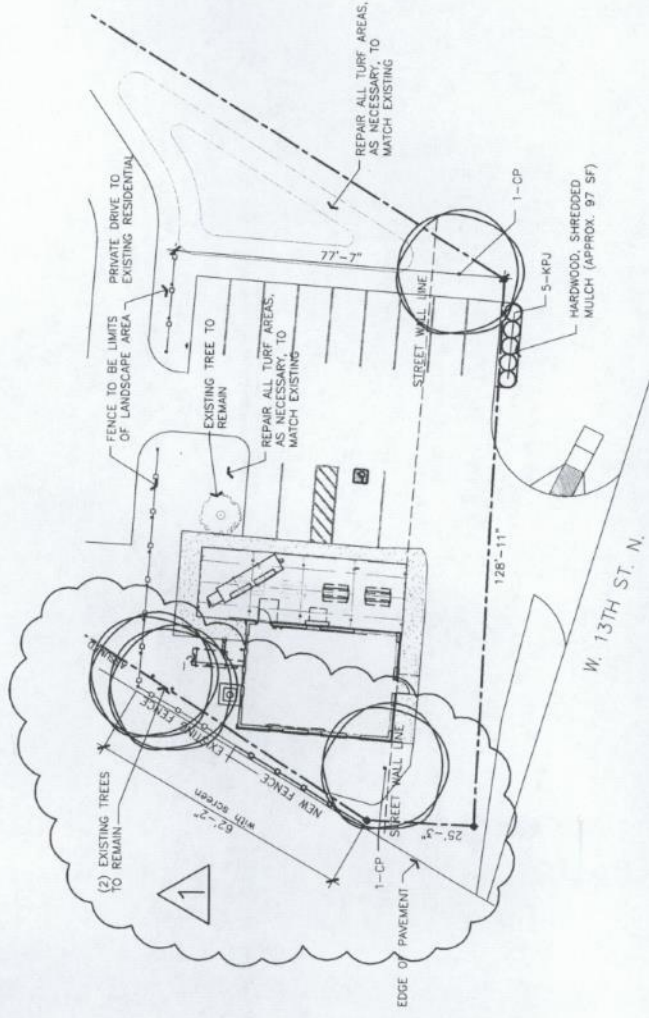
LANDSCAPED STREET YARD REQUIRED	PARKING LOT SCREENING AND LANDSCAPING
Landscaped Street Yard Required (Method 2): 129 LF 13th Street x 8 ft 1,032 (total landscaped st. yard req'd)	Parking lot is screened w/shrubs Existing Lot Trees Required 11 Total trees/20 (one tree per 20 sq ft) = 0.5 or Max 1 tree required (one-half of required street trees may be used)
Landscaped Street Yard Provided: 225 SF street yard provided	Existing Lot Trees Provided: 1 landscaping lot tree provided
Street Yard Trees Required: 1,032 ÷ 500 = 2 trees req'd	Street Yard Trees Provided: 2 shade trees provided
BUFFERES: Buffer required on West Property Line: 88 LF with screen = 88 / 40 = 2.2 or say 3 trees required Buffer provided: 2 existing trees over 6' cal = 4 trees provided	

PLANT MATERIAL SCHEDULE

TAG QTY.	COMMON NAME	BOTANICAL NAME	SIZE/REMARKS
CP 2	SHADE TREES Chinese Pistache	Pistacia chinensis	2-1/2" CAL.
KPJ 0	EVERGREEN SHRUBS Kolly Pfitzer Juniper	Juniperus pfitzeriana 'Kolly's Compact'	3 Gal.
BE 0	Manhattan Euonymus	Euonymus alaticornis 'Manhattan'	3 Gal.
NWS 0	ORNAMENTAL & NATIVE GRASSES Northwind Switchgrass	Panicum virgatum 'Northwind'	3 Gal.

PLANTING LEGEND

PAVEMENT



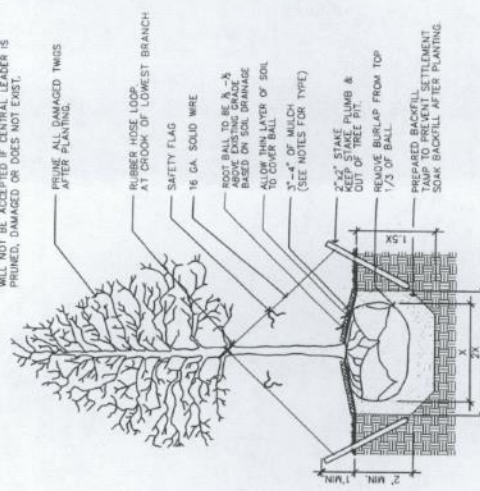
LANDSCAPE PLAN

SITE PLANTING PLAN

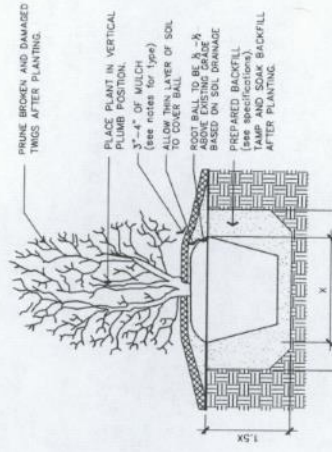
APPROVED 6/24/22 BY A/S/S
Supervisor 6/24/22 Plan
To 9/8

UTILITIES SHOWN REPRESENT THE BEST INFORMATION AVAILABLE FOR DESIGN. ADDITIONAL UTILITIES MAY BE PRESENT ON THIS PROJECT. THE CONTRACTOR SHALL BE RESPONSIBLE FOR DETERMINING THE EXACT LOCATION, DEPTH AND SIZE OF UNDERGROUND UTILITIES PRIOR TO CONSTRUCTION. THE CONTRACTOR SHALL BE LIABLE FOR ANY DAMAGE CAUSED BY THE FAILURE TO DO SO.

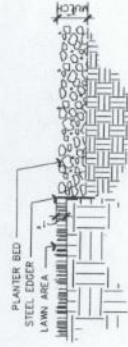
TREES THAT NATURALLY GROW WITH CENTRAL LEADERS THAT ARE DAMAGED OR PRUNED, DAMAGED OR DOES NOT EXIST.



1 TREE PLANTING DETAIL
NO SCALE



2 SHRUB PLANTING DETAIL
NO SCALE



3 EDGER DETAIL
NO SCALE

Barrel Boys BBQ
13th & McLean
Wichita, KS

TERI FARHA, PLA
LANDSCAPE ARCHITECT

terifarha@cox.net
Wichita, KS 67218

PLANTING
PLAN

DATE
June 22, 2022
June 24, 2022

LS1