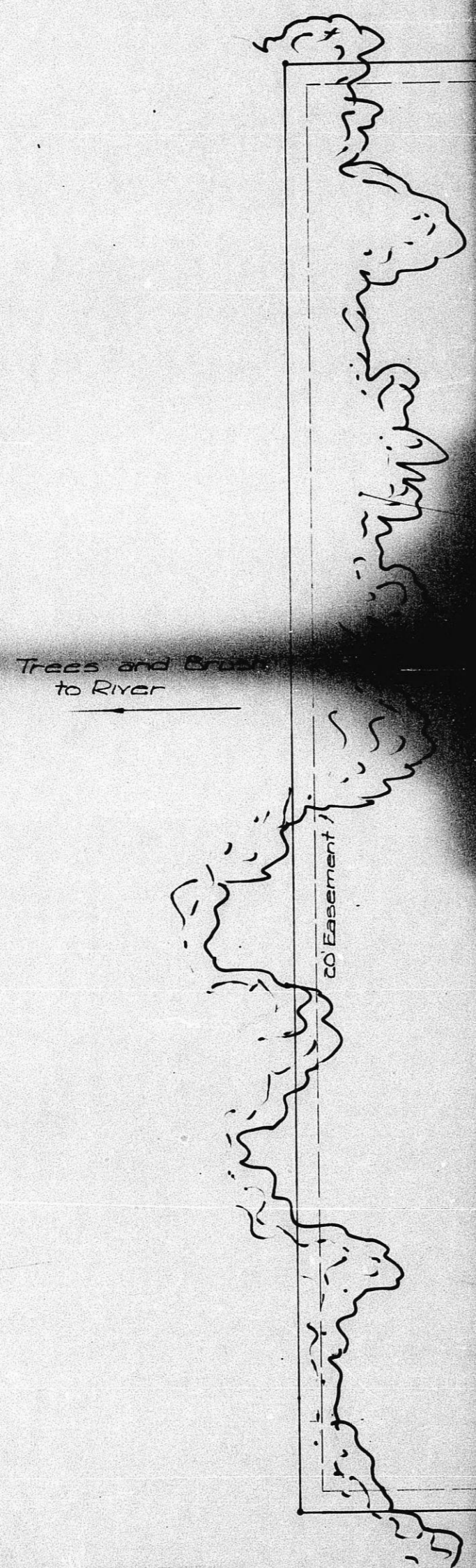
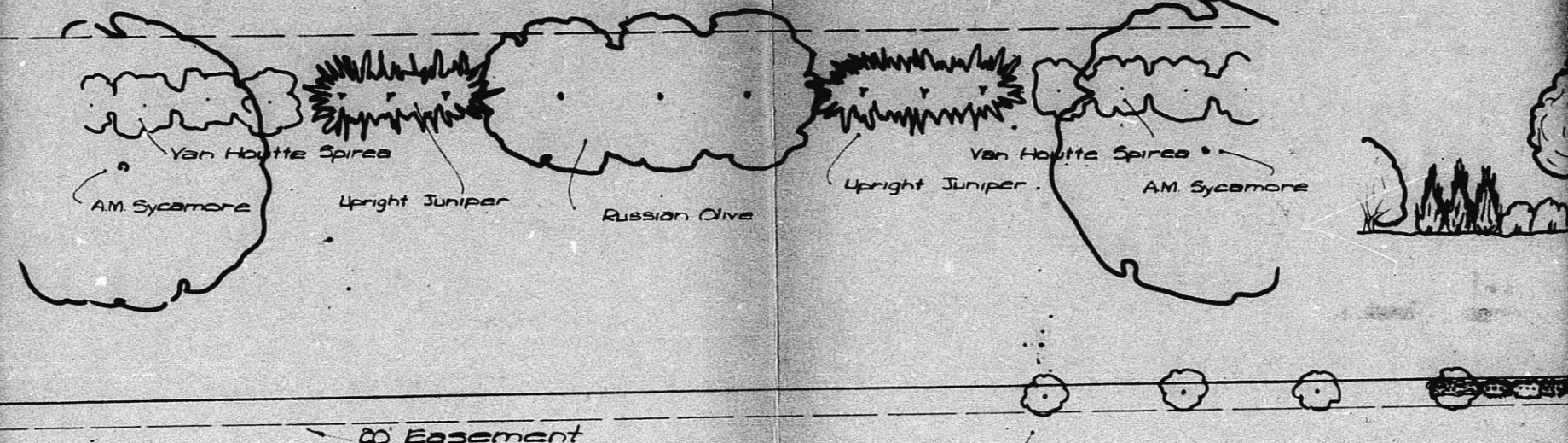


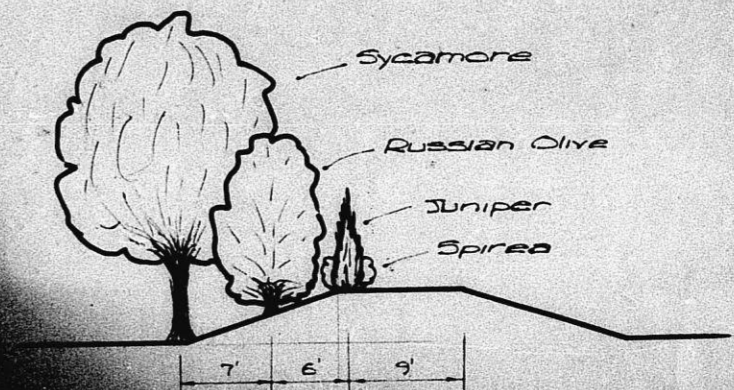
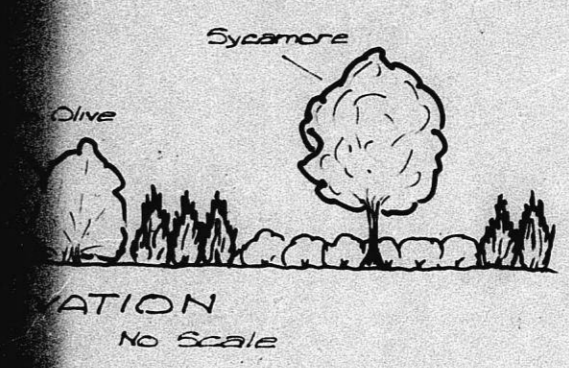
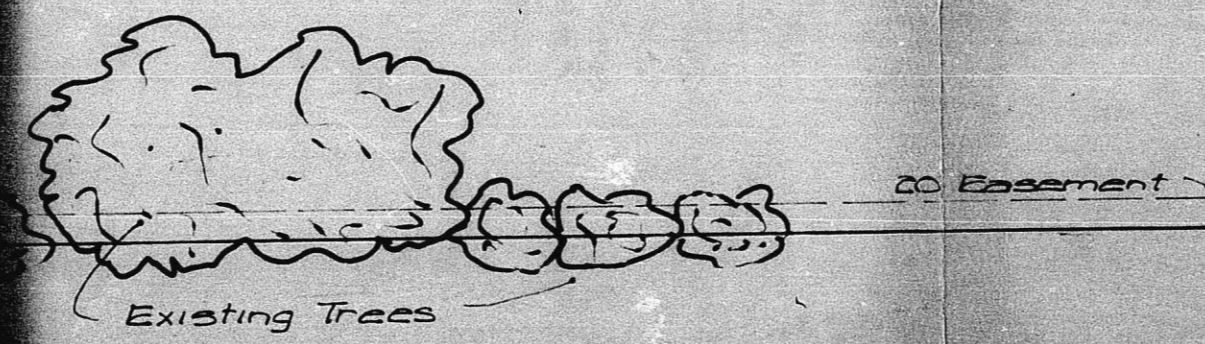
Landscape Buffer Plan
Suggested By: Robert



TYPICAL 100-Ft SECTION
Scale: 1"=10'-0"



Landscape Buffer to be installed around boundary wherever no natural tree buffer exists



SUPERSEDED

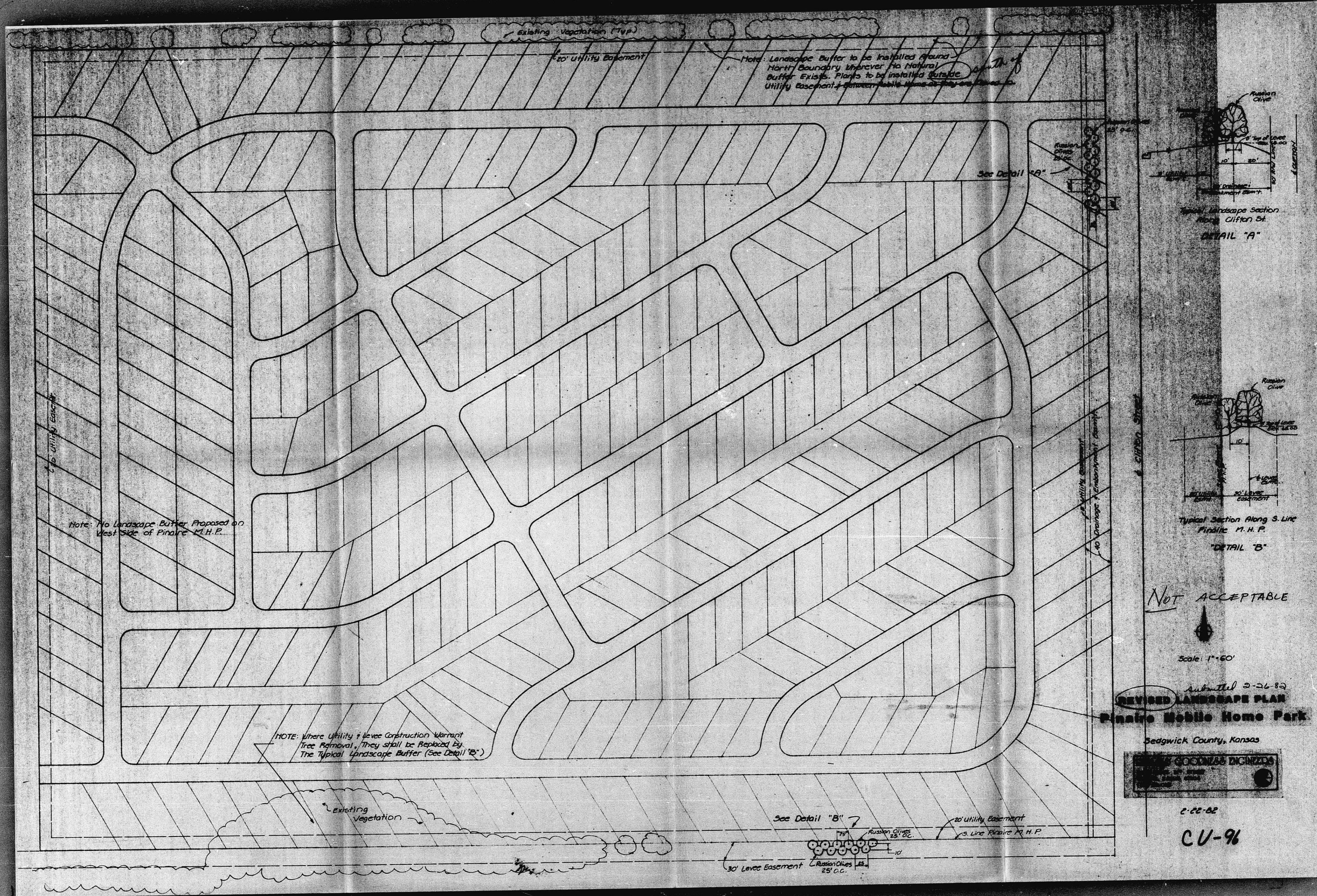
Approved:
C. Bickley Foster
Director of Planning 4/16/69
Scale: 1"=10'

OFFICE COPY
DO NOT REMOVE

CU-96

WINDY LAKE MOBILE HOME PARK
LANDSCAPE BUFFER PLAN

Reiss and Goodness Engineers
2160 E. Douglas - Wichita - Kansas
1969



existing vegetation (top)

30' Utility Easement

Note: Landscape Buffer to be installed around North Boundary wherever No Natural Buffer Exists. Plants to be installed outside Utility Easement & between Public Utility Lines as they are shown.

See Detail "A"

10' Utility Easement

Note: No Landscape Buffer Proposed on West Side of Pinaire M.H.P.

NOTE: Where Utility Lines Construction Warrant Tree Removal, They shall be Replaced by the Typical Landscape Buffer (See Detail "A")

Existing vegetation

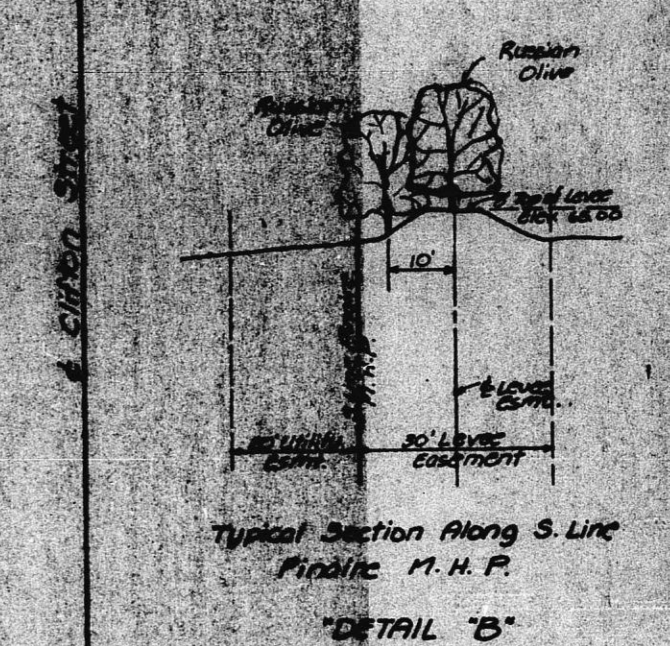
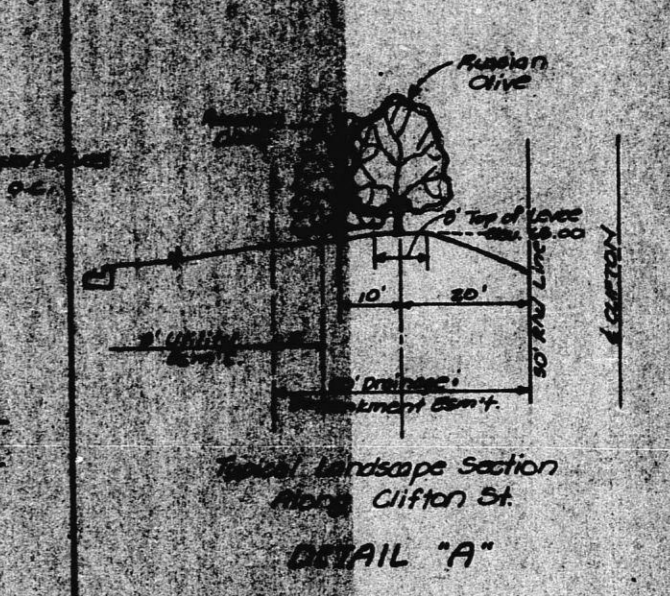
See Detail "B"

10' Utility Easement

30' Line Pinaire M.H.P.

30' Level Easement

25' C.C.



NOT ACCEPTABLE

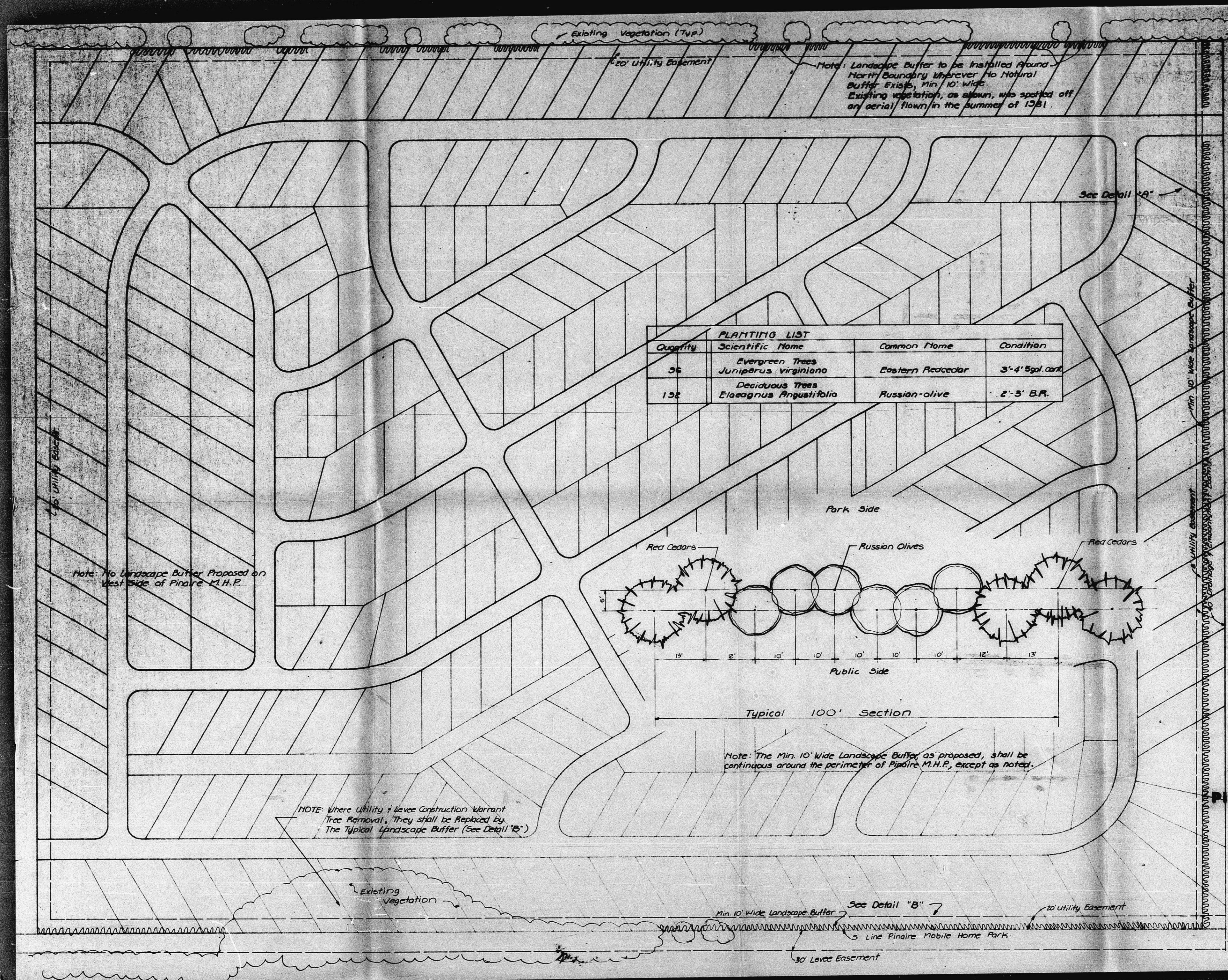
Scale: 1"=60'

Submitted 3-26-82
REVISED LANDSCAPE PLAN
Pinaire Mobile Home Park

Sedgwick County, Kansas

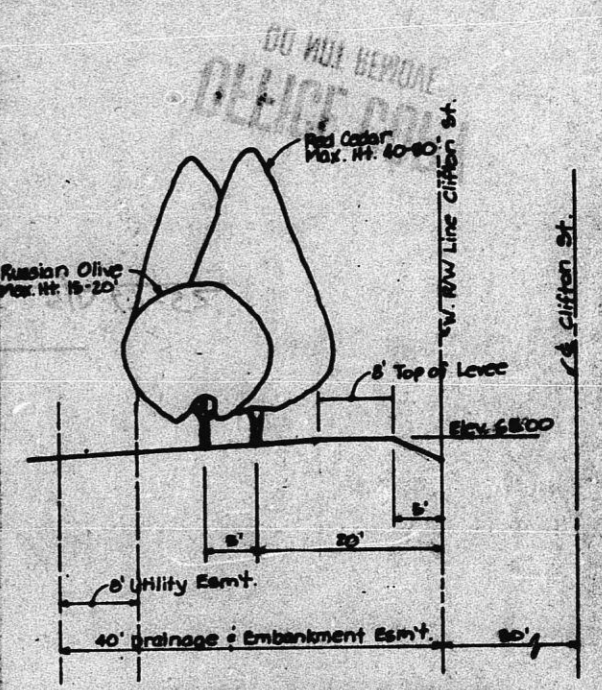
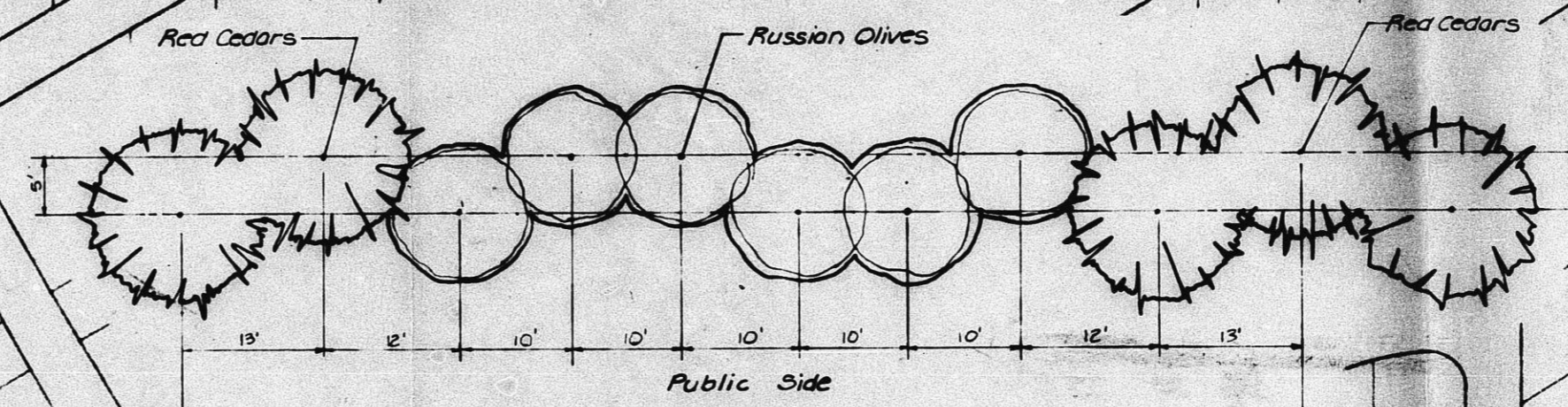
GOODMAN ENGINEERS

2-22-82
CU-96

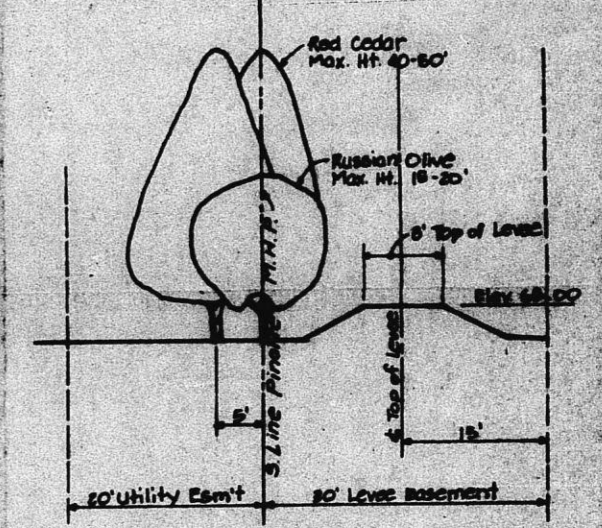


PLANTING LIST

Quantity	Scientific Name	Common Name	Condition
36	Evergreen Trees <i>Juniperus virginiana</i>	Eastern Redcedar	3'-4' 5gal. calt.
152	Deciduous Trees <i>Elaeagnus Angustifolia</i>	Russian-olive	2'-3' B.R.



Typical Landscape Section Along Clifton Street
Detail "A"



Typical Section Along S. Line Pinaire M.H.P.
Detail "B"

Scale: 1" = 60'

REVISED LANDSCAPE PLAN
Pinaire Mobile Home Park

Sedgwick County, Kansas

DILLON & GOODNER ENGINEERS
2000 WEST 21ST STREET
 LAWRENCE, KANSAS 66044
 (913) 842-2222

6-10-82
Revised 6-30-82

CU-96