

D-1358 - Charter Medical of Wichita, Inc
grants a utility easement, located east
of Eastern and south of Orme.

4/15/86

6046A

Approved

POSTED 3-20-86 *KL*
OF 14

ACTION

	DATE
S/D COMMITTEE	3/27/86
M.A.P.C.	4/3/86
<i>Approved</i>	4/15/86

6046A

D-13
gran
of B

MAP NO. 6046 A
SEC. NO. 29
TWP. NO. 27S
RANGE 2E

DEDICATION REPORT AND PROGRESS

CASE NO.: D-1358

ASSOCIATED CASE:

1. OFFER TO DEDICATE: A utility easement.

GENERALLY LOCATED: East of Eastern and south of Orme.

LEGALLY DESCRIBED AS:

A 20-foot utility easement, the centerline described as follows:

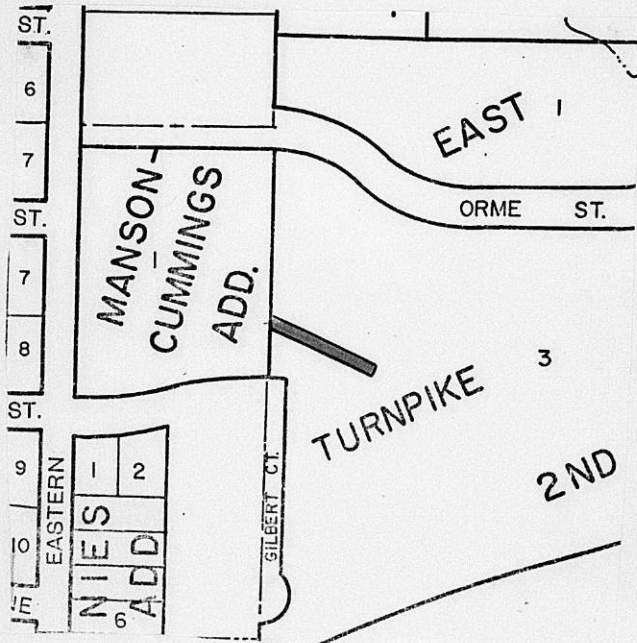
Beginning at the northeast corner of the Mason-Cummings Addition to the City of Wichita; thence south, along the east line of said Addition on an assumed bearing of $N 0^{\circ}02' W$, a distance of 303.25 feet south and 10.48 feet east of the northeast corner of the Mason-Cummings Addition to the City of Wichita to the point of beginning; thence on a bearing of $S 72^{\circ}22'07'' E$, a distance of 210.69 feet.

DEDICATED BY: Charter Medical of Wichita, Inc.

PURPOSE OF DEDICATION:

In connection with City project 448 76 245 80001 000 000 127 for the construction of private water and sewer extensions to serve the Charter Medical Center.

II. SKETCH.



III. FILED 3/5/86
POSTED TO ATLAS
S/D COMM. ACTION 3/27/86 *approval*
M.A.P.C. ACTION 4-3-86 *approval*

B.C.C. ACTION 4-15-86 *Approved*
PLACED ON RECORD
CITY CLERK'S NO.

Planning Agenda Item # _____

City of Wichita
City Commission Meeting
April 15, 1986

Agenda Report # _____

TO: Mayor and City Commissioners

SUBJECT: D-1358 - DEDICATION OF UTILITY EASEMENT, LOCATED
EAST OF EASTERN AND SOUTH OF ORME.

INITIATED BY: Metropolitan Area Planning Department

AGENDA ACTION: Planning

MAPC Recommendation: Accept the dedication.

Background: Charter Medical of Wichita, Inc. is dedicating this utility easement in order to construct water and sewer extensions. City project 448 76 245 80001 000 000 127.

Financial Considerations: Bill the recording costs to: 448 76 245 80001 000 000 127

Recommendations/Actions: Accept the dedication and record document.

CHARTER Medical of Wichita
Inc., grants a utility easement.
located east of Eastern and
south of Orme.

6046 A

29

273

2E

D-135-8

For: 3/27/86 SID Mtg.

Bill recording to:

448-76-245-80001-000-000-127

THE CITY OF WICHITA

OFFICE OF MAPD - Design Division

DATE February 27, 1986

TO Forrest Nagley, Senior Planner

FROM Mike Lindebak, City Engineer/Acting Director of Planning

SUBJECT Private Water & Sewer Extensions
to serve Charter Medical Center
448 76 245 80001 000 000 127

Attached is a utility easement received in connection with the subject project.

Please place the attached instrument on the agenda for Subdivision Committee consideration. Upon approval by the City Commission, I would appreciate a copy of the recorded instrument for our file.



Mike Lindebak, P.E.
City Engineer/
Acting Director of Planning

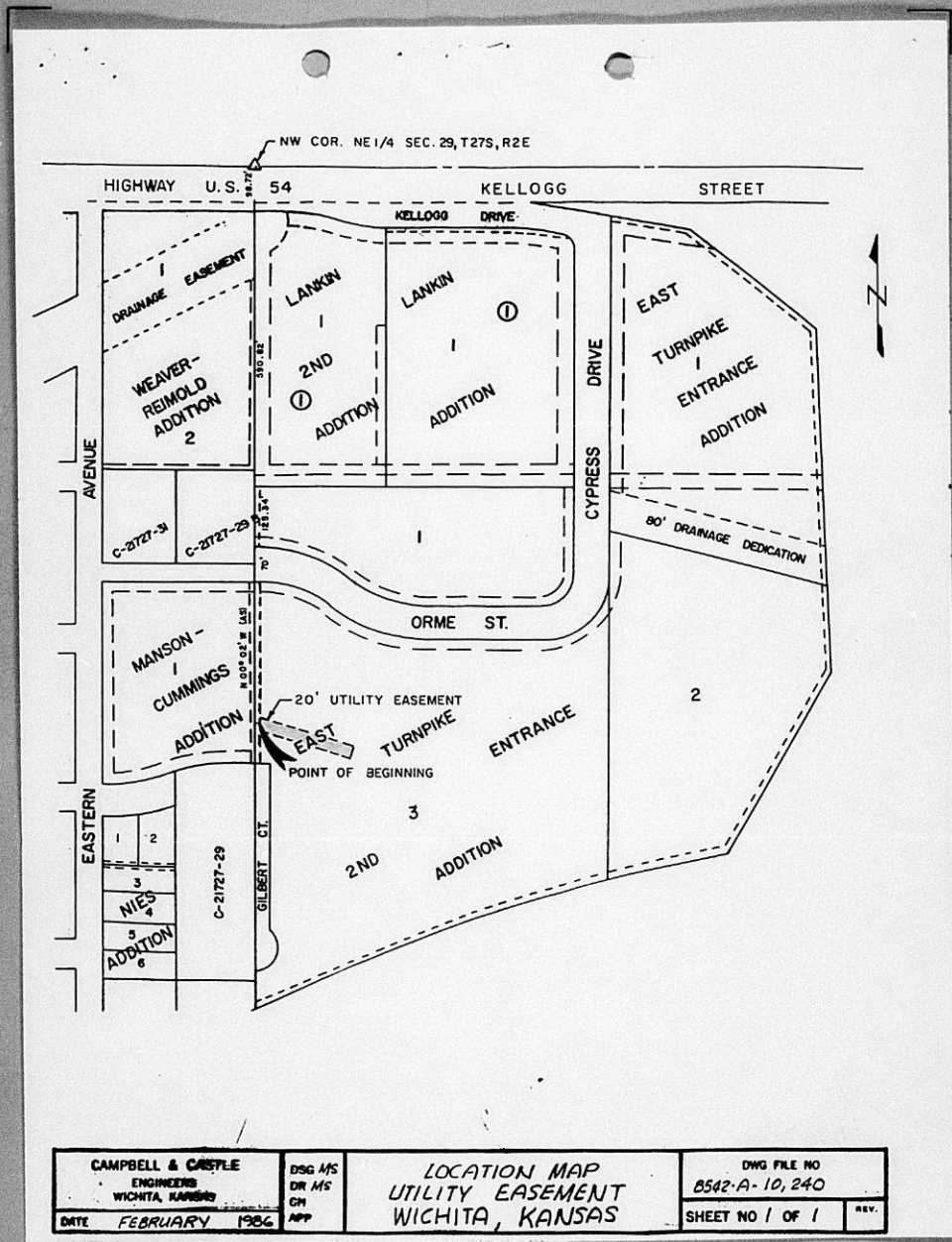
/JLL:ms
Attachment

RECEIVED

MAR 05 1986

METROPOLITAN PLANNING

ROUTE _____



CAMPBELL & CASTLE
ENGINEERS
WICHITA, KANSAS

DSG M/S
DIR M/S
CH
APP

LOCATION MAP
UTILITY EASEMENT
WICHITA, KANSAS

DWG FILE NO
8542-A-10,240

SHEET NO 1 OF 1

REV.

DATE FEBRUARY 1986