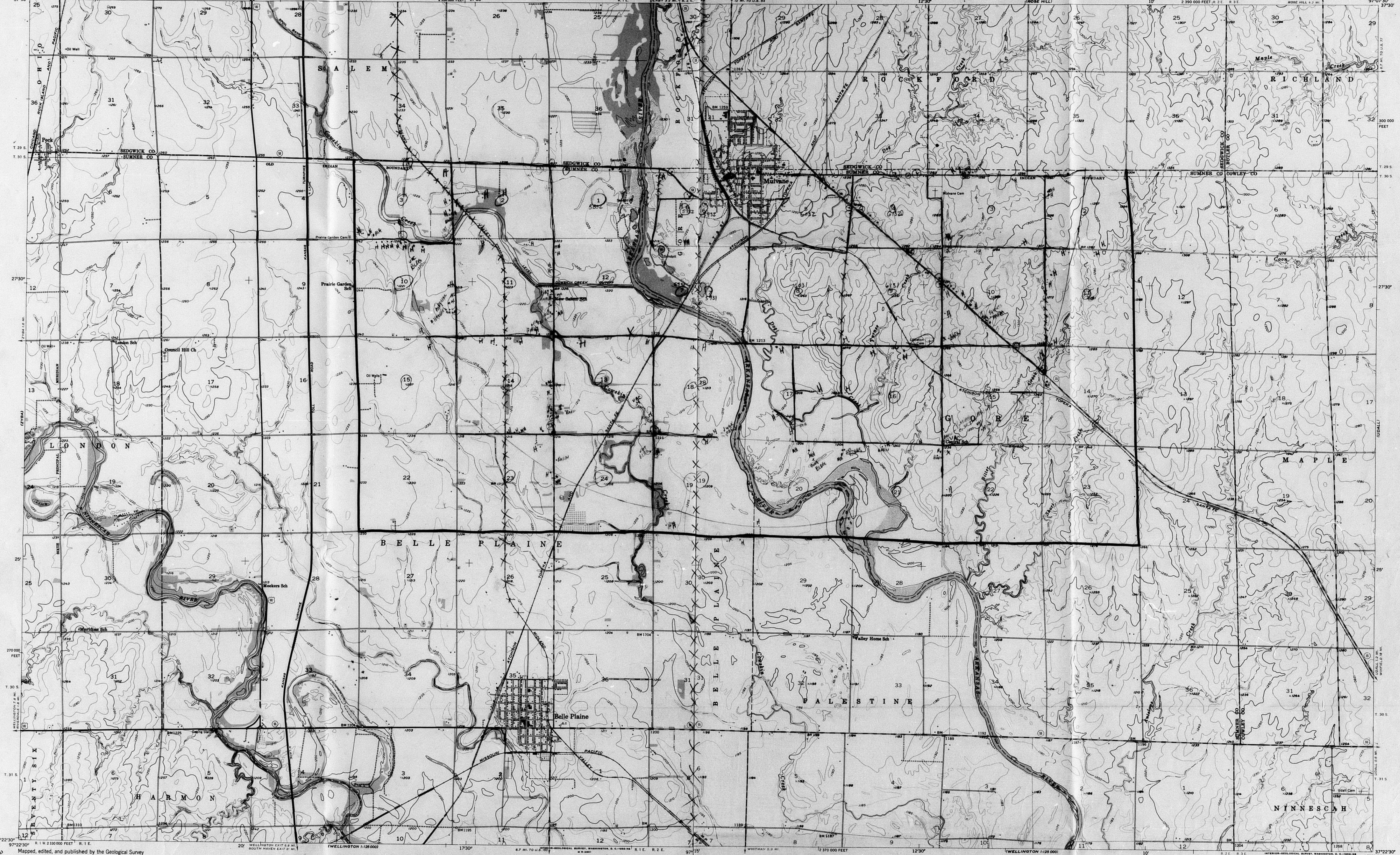


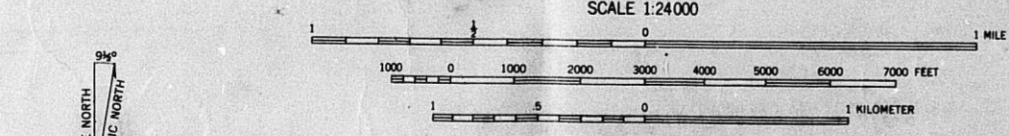
UNITED STATES
DEPARTMENT OF THE INTERIOR
GEOLOGICAL SURVEY

BELLE PLAINE QUADRANGLE
KANSAS
7.5 MINUTE SERIES (TOPOGRAPHIC)
R. I. E. 1:25,000

MULVANE QUADRANGLE
KANSAS
7.5 MINUTE SERIES (TOPOGRAPHIC)
R. I. E. 1:25,000



Maped, edited, and published by the Geological Survey
Control by USGS and USCGS
Topography from aerial photographs by Keith plotters
Aerial photographs taken 1954. Field check 1955
Polyconic projection. 1927 North American datum
63,000-foot grid based on Kansas coordinate system,
south zone

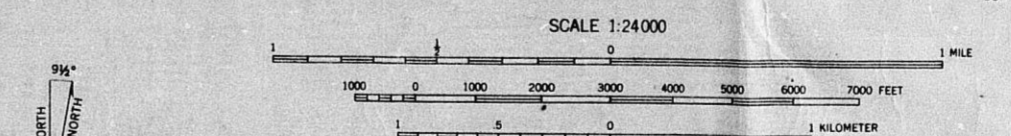


ROAD CLASSIFICATION
Heavy-duty ——— Light-duty ———
Medium-duty ——— Unimproved dirt ———
U.S. Route ——— State Route ———

BELLE PLAINE, KANS.
N3722.5-W9715.77.5
1955

FOR SALE BY U.S. GEOLOGICAL SURVEY, FEDERAL CENTER, DENVER, COLORADO OR WASHINGTON 25, D. C.
AND BY THE STATE GEOLOGICAL SURVEY, LAWRENCE, KANSAS
A FOLDER DESCRIBING TOPOGRAPHIC MAPS AND SYMBOLS IS AVAILABLE ON REQUEST

Maped, edited, and published by the Geological Survey
Control by USGS and USCGS
Topography from aerial photographs by Keith plotters
Aerial photographs taken 1955. Aerial photographs taken 1954
Polyconic projection. 1927 North American datum
63,000-foot grid based on Kansas coordinate system,
south zone



ROAD CLASSIFICATION
Heavy-duty ——— Light-duty ———
Medium-duty ——— Unimproved dirt ———
U.S. Route ——— State Route ———

MULVANE, KANS.
N3722.5-W9707.57.5
1955

FOR SALE BY U.S. GEOLOGICAL SURVEY, FEDERAL CENTER, DENVER, COLORADO OR WASHINGTON 25, D. C.
AND BY THE STATE GEOLOGICAL SURVEY, LAWRENCE, KANSAS
A FOLDER DESCRIBING TOPOGRAPHIC MAPS AND SYMBOLS IS AVAILABLE ON REQUEST

DR 70-18

511

FILMED FROM THE BEST
AVAILABLE COPY