

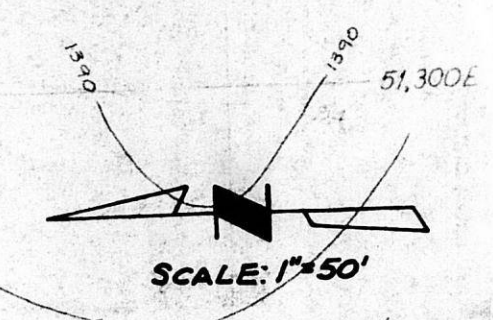
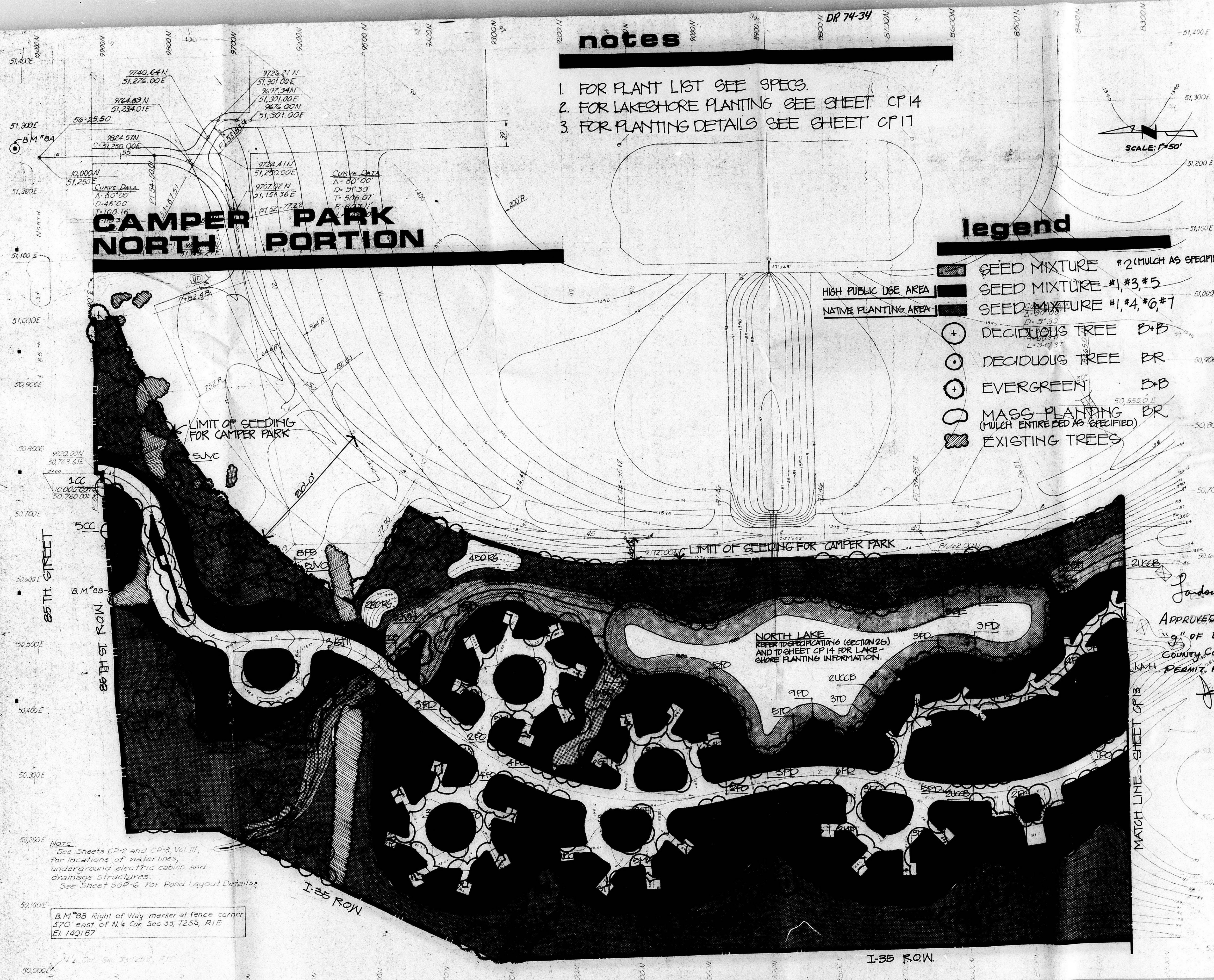
notes

1. FOR PLANT LIST SEE SPECS.
2. FOR LAKE SHORE PLANTING SEE SHEET CP 14
3. FOR PLANTING DETAILS SEE SHEET CP 17

legend

- SEED MIXTURE #2 (MULCH AS SPECIFIED)
- HIGH PUBLIC USE AREA
- SEED MIXTURE #1, #3, #5
- NATIVE PLANTING AREA
- SEED MIXTURE #1, #4, #6, #7
- DECIDUOUS TREE D+B
- DECIDUOUS TREE BR
- EVERGREEN D+B
- MASS PLANTING BR (MULCH ENTIRE BED AS SPECIFIED)
- EXISTING TREES

CAMPER PARK NORTH PORTION



NOTE:
See Sheets CP-2 and CP-3, Vol. III,
for locations of waterlines,
underground electric cables and
drainage structures.
See Sheet 33R-6 for Pond Layout Details.

B.M. #88 Right of Way marker at fence corner
570' east of N. 4th Cor. Sec 33, T25S, R1E
E1 140187

oblinger-smith corporation
Professional Engineers
225 East National Bank Building
Wichita, Kansas 67202
DRAWN: [initials] CHECKED: [initials]










Approved for Requirement
"g" of DR 74-34 - Sedgwick
County Coliseum Special
Permit Request.
2/9/76

KANSAS COLISEUM
SEDGWICK COUNTY, KANSAS
BOARD OF COUNTY COMMISSIONERS
ECONOMIC DEVELOPMENT ADMINISTRATION
PROJECT NO. 05-1-0184
UNITED STATES DEPARTMENT OF COMMERCE

CAMPER PARK SOUTH PORTION



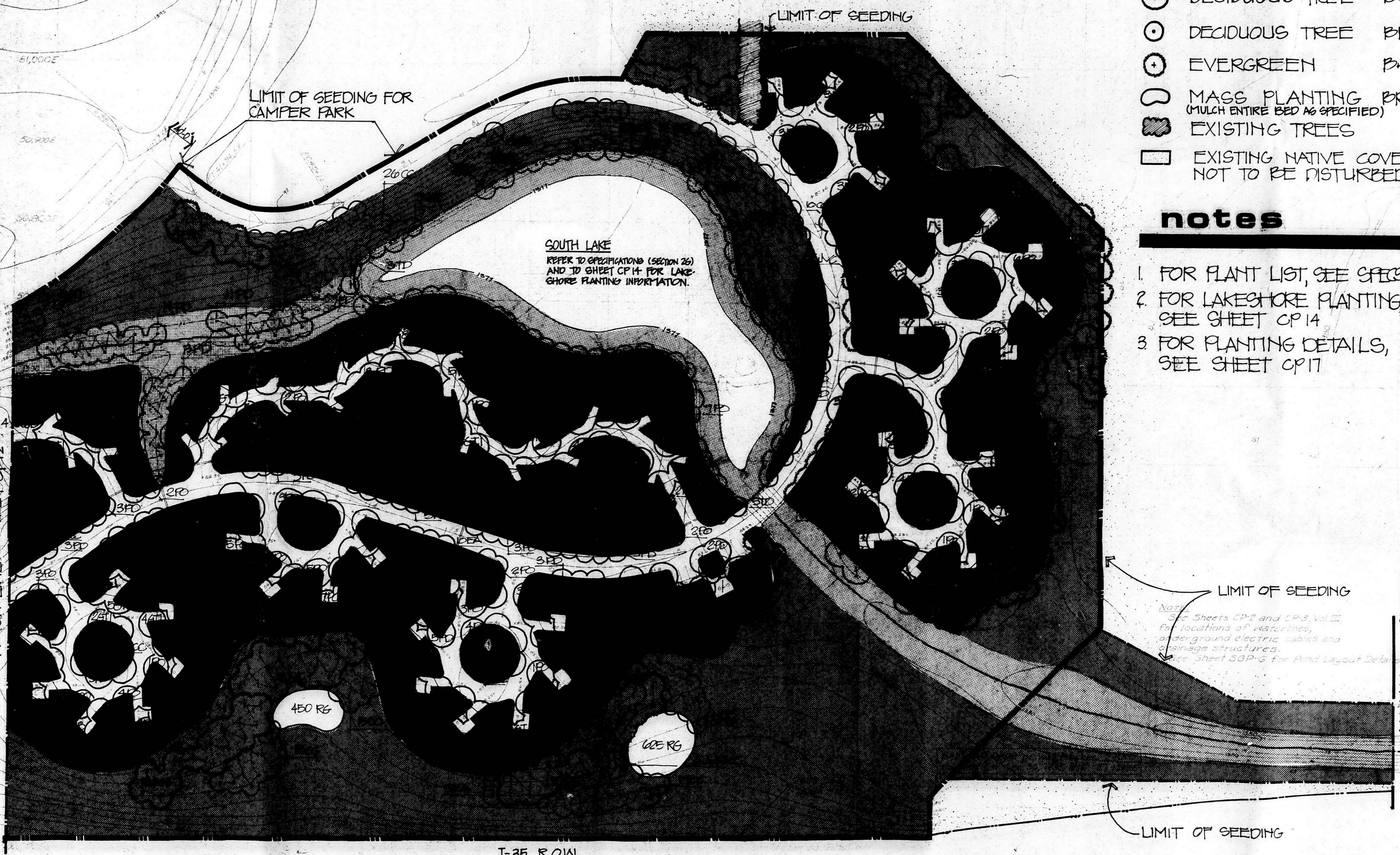
Legend

-  SEED MIXTURE *2 (MULCH AS SPECIFIED)
-  HIGH PUBLIC USE AREA
-  NATIVE PLANTING AREA
-  DECIDUOUS TREE B+B
-  DECIDUOUS TREE BR
-  EVERGREEN B+B
-  MASS PLANTING BR (MULCH ENTIRE BED AS SPECIFIED)
-  EXISTING TREES
-  EXISTING NATIVE COVER NOT TO BE DISTURBED

Notes

1. FOR PLANT LIST, SEE SPECS
2. FOR LAKESHORE PLANTING, SEE SHEET CP14
3. FOR PLANTING DETAILS, SEE SHEET CP17

Curve Data
 A=30' UC
 R=31.90'
 T=603.11'
 P=603.11'
 L=347.37'



SOUTH LAKE
 REFER TO SPECIFICATIONS (SECTION 26)
 AND TO SHEET CP14 FOR LAKE-
 SHORE PLANTING INFORMATION.

LIMIT OF SEEDING FOR
 CAMPER PARK

LIMIT OF SEEDING

LIMIT OF SEEDING

LIMIT OF SEEDING

MATCH LINE - SHEET CP12

MATCH LINE - SHEET CP14

450 RG

400 RG

I-35 ROW

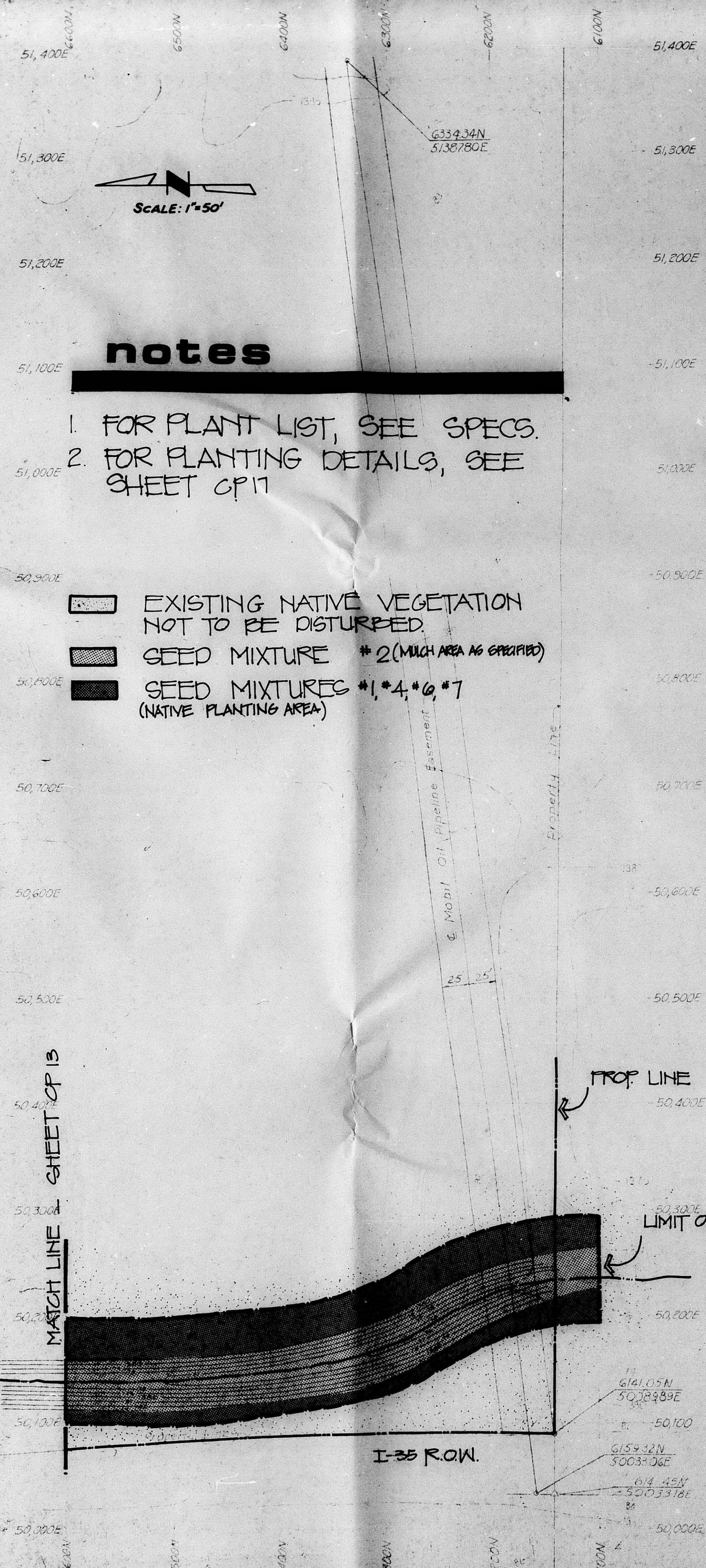
oblinger-smith corporation
 625 First National Bank Building
 Miami, Florida 33132

THOMAS HARRIS ASH & NIXON
 ARCHITECTS & ENGINEERS
 111 NORTH WALKER
 MIAMI, FLORIDA 33132



KANSAS COLISEUM
 SEDGWICK COUNTY, KANSAS
 BOARD OF COMMISSIONERS
 ECONOMIC DEVELOPMENT ADMINISTRATION
 PROJECT NO. 05-1-01284
 UNITED STATES DEPARTMENT OF COMMERCE

Vol. III
 cp 13
 of 19



notes

1. FOR PLANT LIST, SEE SPECS.
2. FOR PLANTING DETAILS, SEE SHEET CP11

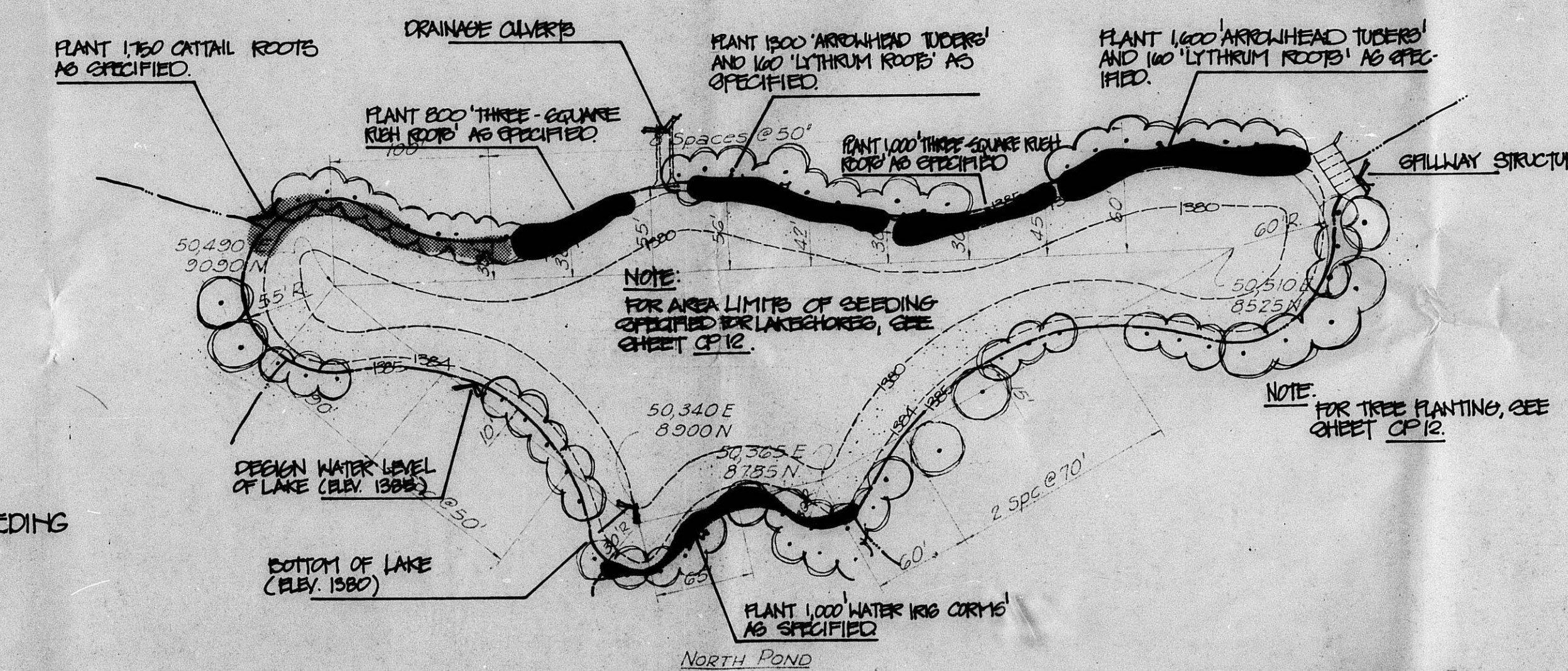
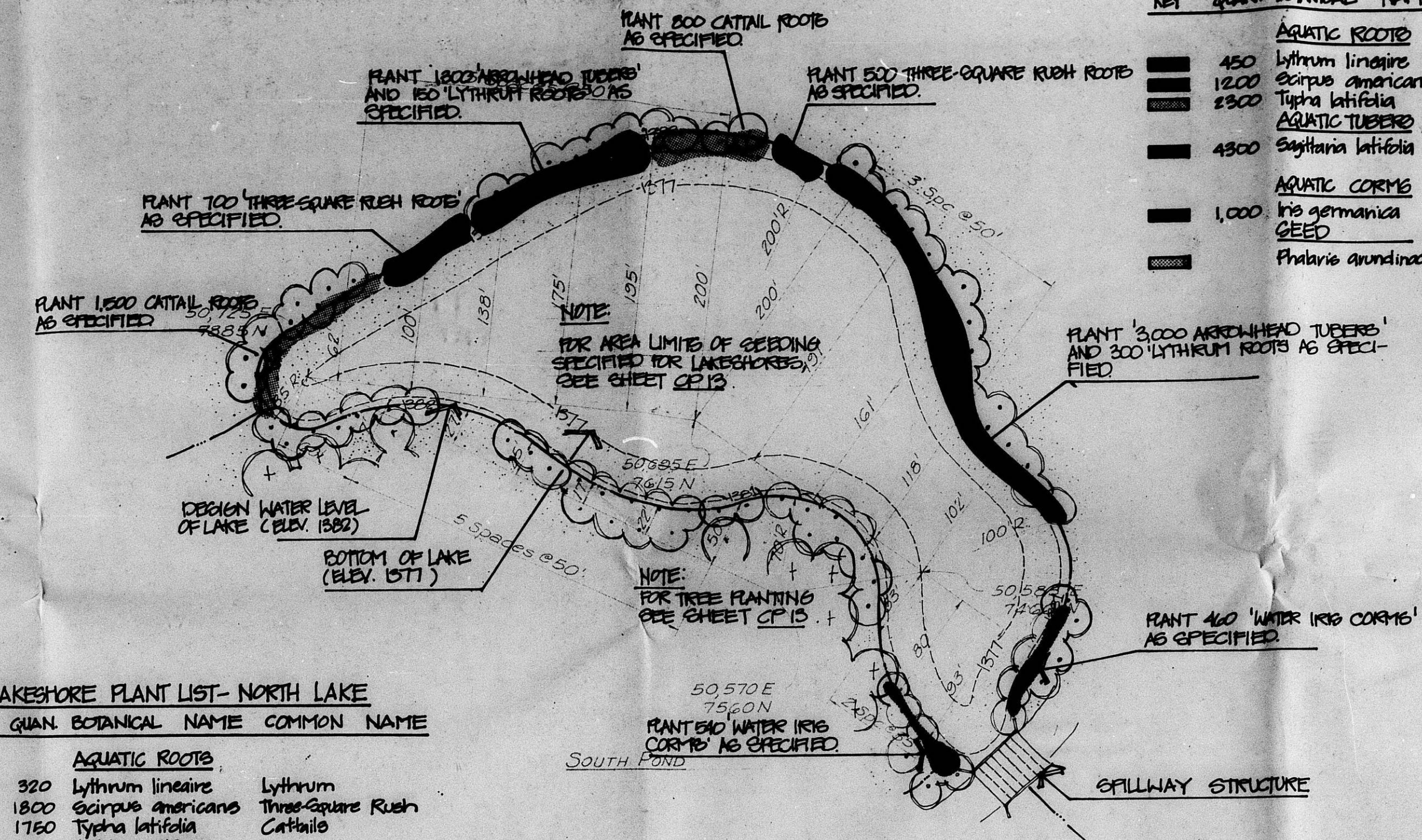
- EXISTING NATIVE VEGETATION NOT TO BE DISTURBED
- SEED MIXTURE *2 (MUCH AREA AS SPECIFIED)
- SEED MIXTURES *1, *4, *6, *7 (NATIVE PLANTING AREA)

LAKESHORE PLANT LIST- NORTH LAKE

KEY	QUAN.	BOTANICAL NAME	COMMON NAME
AQUATIC ROOTS			
■	320	<i>Lythrum lineaire</i>	Lythrum
■	1800	<i>Scirpus americanus</i>	Three-Square Rush
■	1750	<i>Typha latifolia</i>	Cattails
AQUATIC TUBERS			
■	2900	<i>Sagittaria latifolia</i>	Arrowhead Nuphar Duck Potato
AQUATIC CORMS			
■	1,000	<i>Iris germanica</i>	Blue Water Iris
SEED			
■		<i>Phalaris arundinacea</i>	Reed Canarygrass

LAKESHORE PLANT LIST- SOUTH LAKE

KEY	QUAN.	BOTANICAL NAME	COMMON NAME
AQUATIC ROOTS			
■	450	<i>Lythrum lineaire</i>	Lythrum
■	1200	<i>Scirpus americanus</i>	Three-Square Rush
■	2300	<i>Typha latifolia</i>	Cattails
AQUATIC TUBERS			
■	4900	<i>Sagittaria latifolia</i>	Arrowhead Nuphar Duck Potato
AQUATIC CORMS			
■	1,000	<i>Iris germanica</i>	Blue Water Iris
SEED			
■		<i>Phalaris arundinacea</i>	Reed Canarygrass



LAKESHORE PLANTING

PLANT LIST FOR CAMPER PARK SITE*

KEY	TOTAL QUANTITY	BOTANICAL NAME	COMMON NAME	SIZE OR CALIBER	METHOD OF TRANSPLANTING	REMARKS
OD	36	<i>Celtis occidentalis</i>	Common Hackberry	5'-6'	BR	
OC	212	<i>Cercis canadensis</i>	Eastern Redbud	5'-6'	BR	
EA	40	<i>Elaeagnus angustifolia</i>	Russian Olive	5'-6'	BR	
OTI	117	<i>Gleditsia triacanthos inermis</i>	Thornless Honeylocust	1-1/2"-1-3/4"	B&B	
OTI	125	<i>Gleditsia triacanthos inermis</i>	Thornless Honeylocust	5'-6'	BR	
JVC	91	<i>Juniperus virginiana 'Cernery'</i>	Common Eastern Redcedar	2-1/2"-4"	B&B	To be wilt-proofed
JVC	108	<i>Juniperus virginiana 'Henry'</i>	Henry Eastern Redcedar	2-1/2"-4"	B&B	To be wilt-proofed
MP	15	<i>Maclura pomifera</i>	Osgearange	1-1/2"-1-3/4"	B&B	If not available commercially, shall be dug and transplanted
MA	44	<i>Morus alba</i>	White Fruitless Mulberry	1-1/2"-1-3/4"	B&B	
PA	28	<i>Pinus nigra</i>	Austrian Pine	3'-5-1/2"	B&B	To be wilt-proofed
PS	67	<i>Pinus sylvestris</i>	Scotch Pine	3'-4"	B&B	To be wilt-proofed
PO	150	<i>Platanus occidentalis</i>	American Planetree	1-1/2"-1-3/4"	B&B	
PO	51	<i>Platanus occidentalis</i>	American Planetree	5'-6'	BR	
PD	86	<i>Populus deltoides</i>	Cottonwood	1-1/2"-1-3/4"	B&B	
PD	138	<i>Populus deltoides</i>	Cottonwood	5'-6'	BR	
RD	1,805	<i>Rhus glabra</i>	Smoothleaf Sumac	18"-24"	BR	
SE	31	<i>Salix elegantissima</i>	Thrush Weeping Willow	5'-6'	B&B	To be wilt-proofed
TD	60	<i>Taxodium distichum</i>	Common Baldcypress	5'-6'	BR	
UCCB	114	<i>Ulmus carpinifolia 'Christine'</i>	Christine Buteman	1-1/2"-1-3/4"	B&B	
UCCB	5	<i>Ulmus carpinifolia 'Christine'</i>	Christine Buteman	5'-6'	BR	
UCCB	5	<i>Ulmus carpinifolia 'Christine'</i>	Christine Buteman	5'-6'	BR	

PLANT LIST FOR KANSAS COLISEUM SITE*

KEY	TOTAL QUANTITY	BOTANICAL NAME	COMMON NAME	SIZE OR CALIBER	METHOD OF TRANSPLANTING	REMARKS
TREES	82	<i>Celtis occidentalis</i>	Common Hackberry	5'-6'	BR	
OC	40	<i>Cercis canadensis</i>	Eastern Redbud	5'-6'	BR	
OTI	70	<i>Gleditsia triacanthos inermis</i>	Thornless Honeylocust	1-1/2"-1-3/4"	B&B	
OTI	98	<i>Gleditsia triacanthos inermis</i>	Thornless Honeylocust	5'-6'	B&B	
PA	80	<i>Platanus acerifolia</i>	London Plane	1-1/2"-1-3/4"	B&B	
PA	154	<i>Platanus acerifolia</i>	London Plane	6'-8"	B&B	
OB	12	<i>Quercus borealis</i>	Northern Red Oak	8'-10"	BR	
SJ	20	<i>Sophora japonica</i>	Japanese Pagodatree	5'-6'	BR	
TD	16	<i>Taxodium distichum</i>	Common Baldcypress	6'-8"	B&B	
GROUND COVER	1,110	<i>Lonicera japonica 'Halliana' purpurea</i>	Halls Japanese Honeysuckle	2-1/4" pot	24" o.c.	

oblinger-smith corporation
 Consultants in Planning
 625 East National Bank Building
 Wichita, Kansas 67202

THOMAS, HARRIS, ASH & MASON, INC.
 ARCHITECTS & ENGINEERS
 242 NORTH WABO
 WICHITA, KANSAS 67202

KANSAS COLISEUM
 SEDGWICK COUNTY, KANSAS
 BOARD OF COUNTY COMMISSIONERS
 ECONOMIC DEVELOPMENT ADMINISTRATION
 PROJECT NO. 05-1-0184
 UNITED STATES DEPARTMENT OF COMMERCE

Vol. III
 p 14
 of 19

FILMED FROM THE BEST AVAILABLE COPY

B.M. 7A Chisled X on south hubguard of culvert 100' west of NE Cor. Sec. 33, T23S, R1E, E1 1391.64

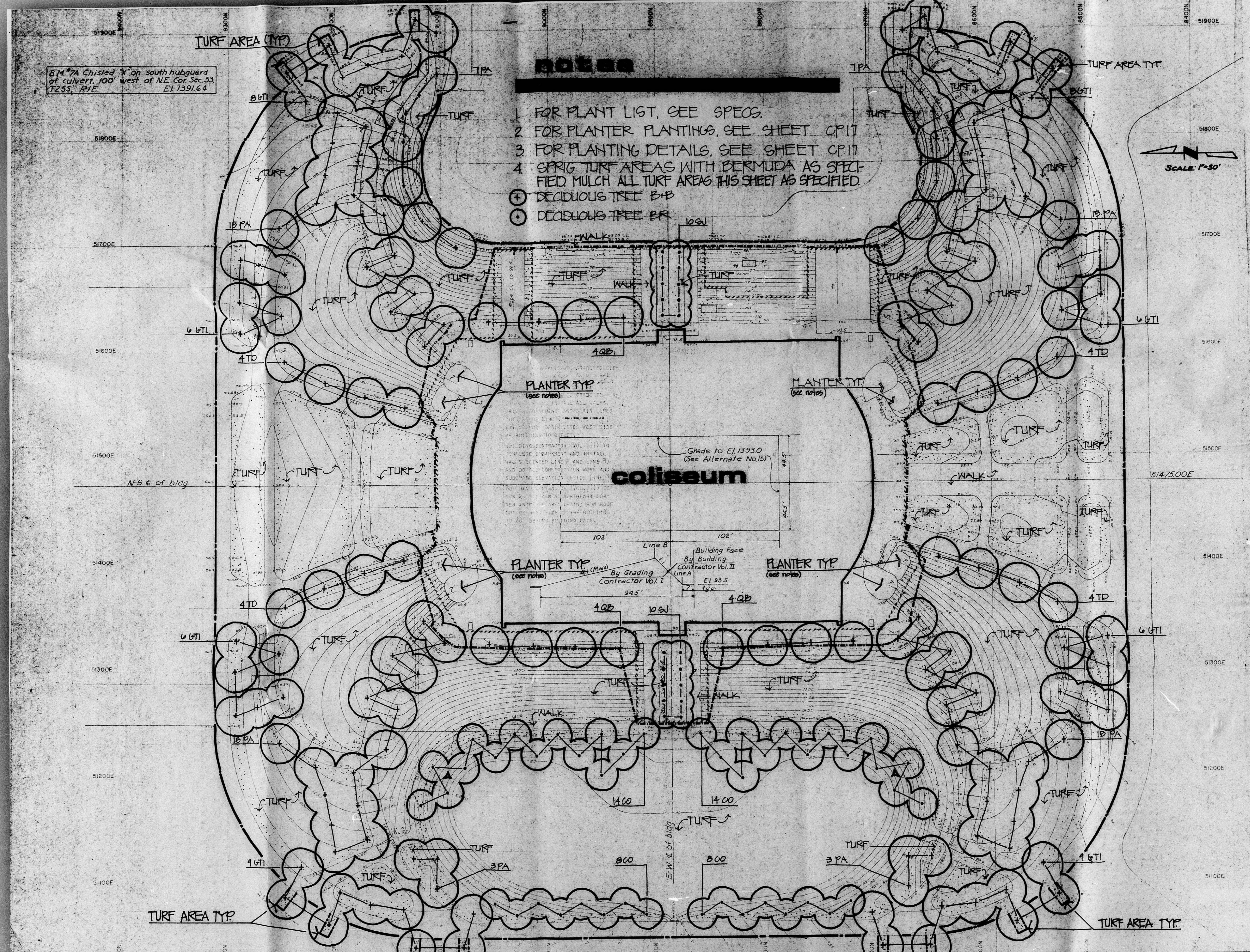
NOTES

- 1 FOR PLANT LIST, SEE SPECS.
 - 2 FOR PLANTER PLANTINGS, SEE SHEET CP17
 - 3 FOR PLANTING DETAILS, SEE SHEET CP17
 - 4 SPRIG TURF AREAS WITH BERMUDA AS SPECIFIED. MULCH ALL TURF AREAS THIS SHEET AS SPECIFIED.
- ⊕ DECIDUOUS TREE B+B
 ⊙ DECIDUOUS TREE BR

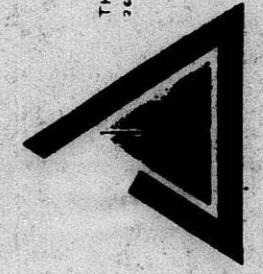


oblinger-smith corporation

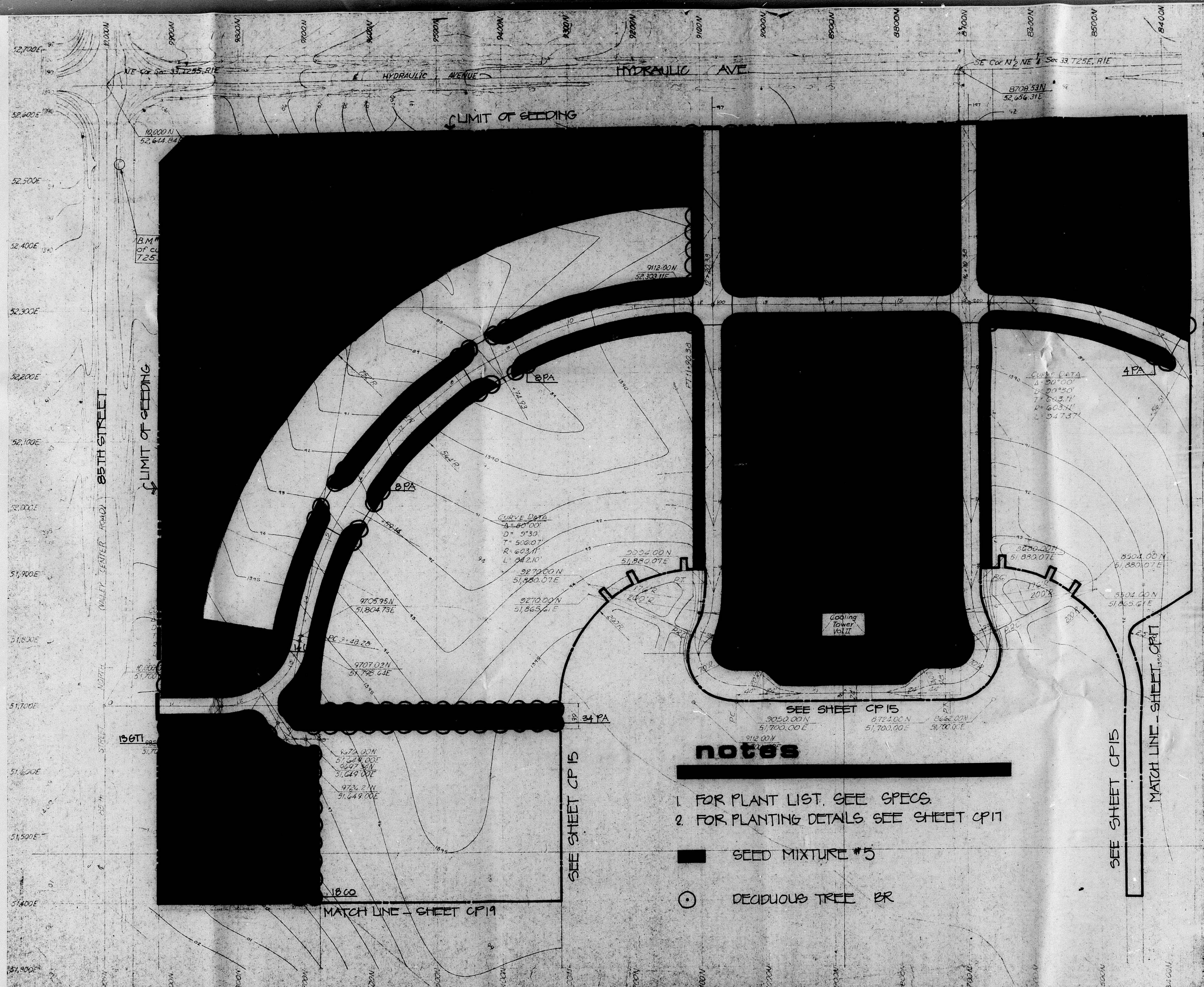
Consultants in Planning
 625 First National Bank Building
 Wichita, Kansas 67202



THOMAS HARRIS, ASH & MASON, Architects & Engineers
 22 NORTH WASH. ST. WICHITA, KANSAS 67202



KANSAS COLISEUM
 SEDGWICK COUNTY, KANSAS
 BOARD OF COUNTY COMMISSIONERS
 ECONOMIC DEVELOPMENT ADMINISTRATION
 PROJECT NO. 05-1-01384
 UNITED STATES DEPARTMENT OF COMMERCE



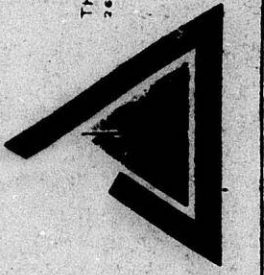
CURVE DATA
 A=80'00"
 D= 9°30'
 T= 506.07'
 R= 603.11'
 L= 242.10'

CURVE DATA
 A= 50'00"
 D= 20°30'
 T= 263.34'
 R= 603.11'
 L= 94.737'

notes

1. FOR PLANT LIST, SEE SPECS.
 2. FOR PLANTING DETAILS SEE SHEET CP17
- SEED MIXTURE #5
 - DECIDUOUS TREE BR

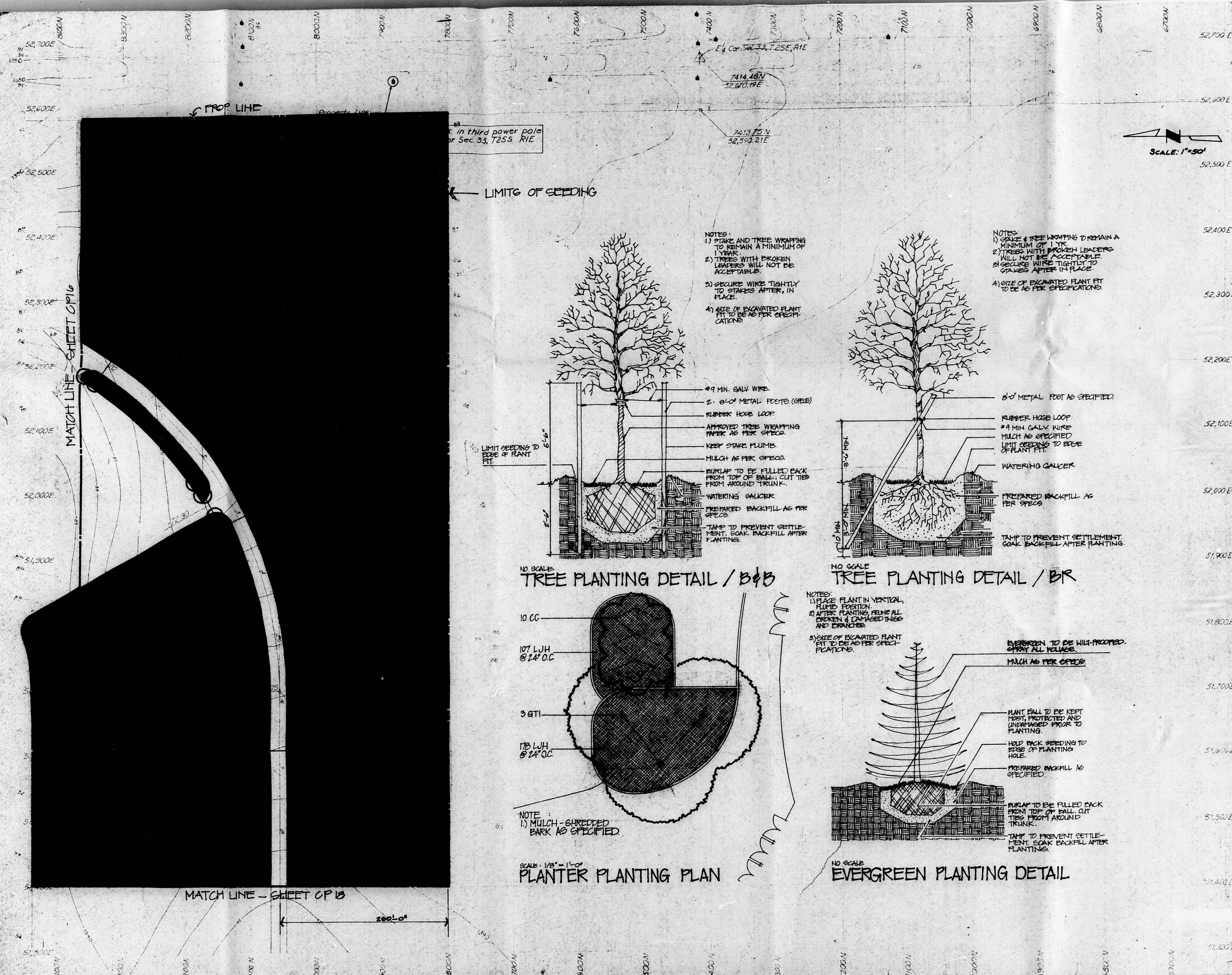
oblinger-smith corporation
 Civil Engineers
 2225 N. 10th St., Suite 100
 Oklahoma City, Oklahoma 73102



KANSAS COLISEUM
 SEDGWICK COUNTY, KANSAS
 ECONOMIC DEVELOPMENT ADMINISTRATION
 PROJECT NO. 05-1-0134
 UNITED STATES DEPARTMENT OF COMMERCE

Vol. III

cp 16
 of 19

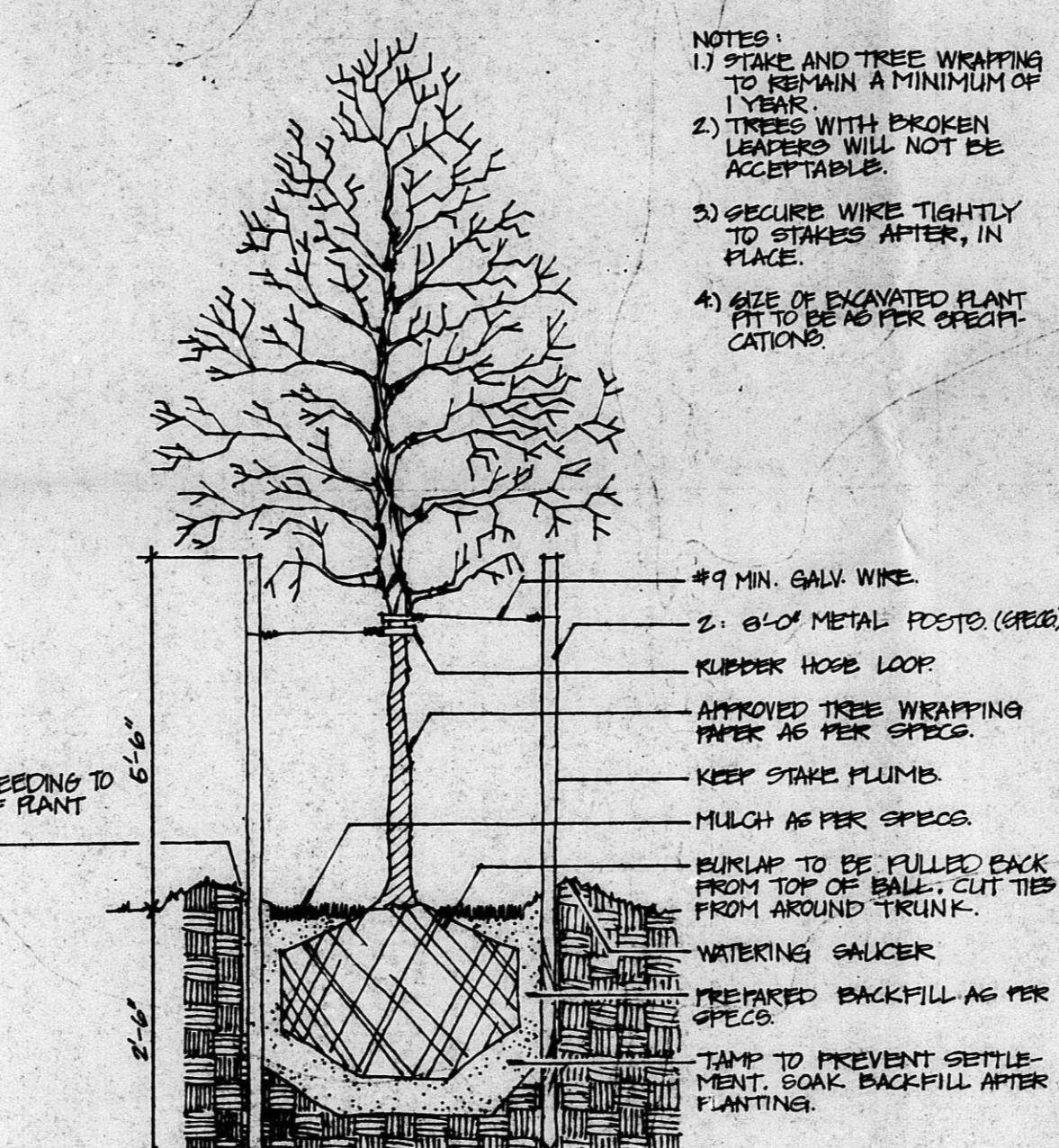


3rd power pole for Sec. 33, T25E, R1E

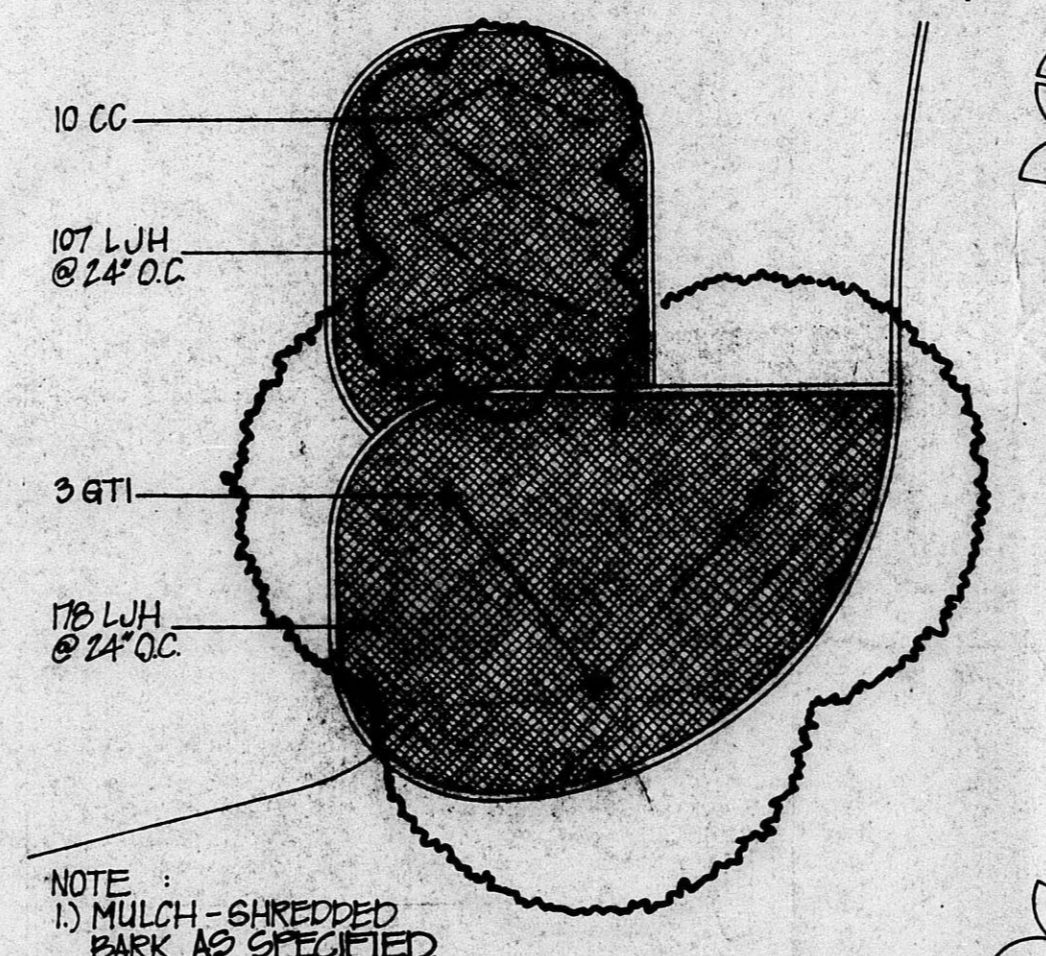
LIMITS OF SEEDING

MATCH LINE - SHEET CP16

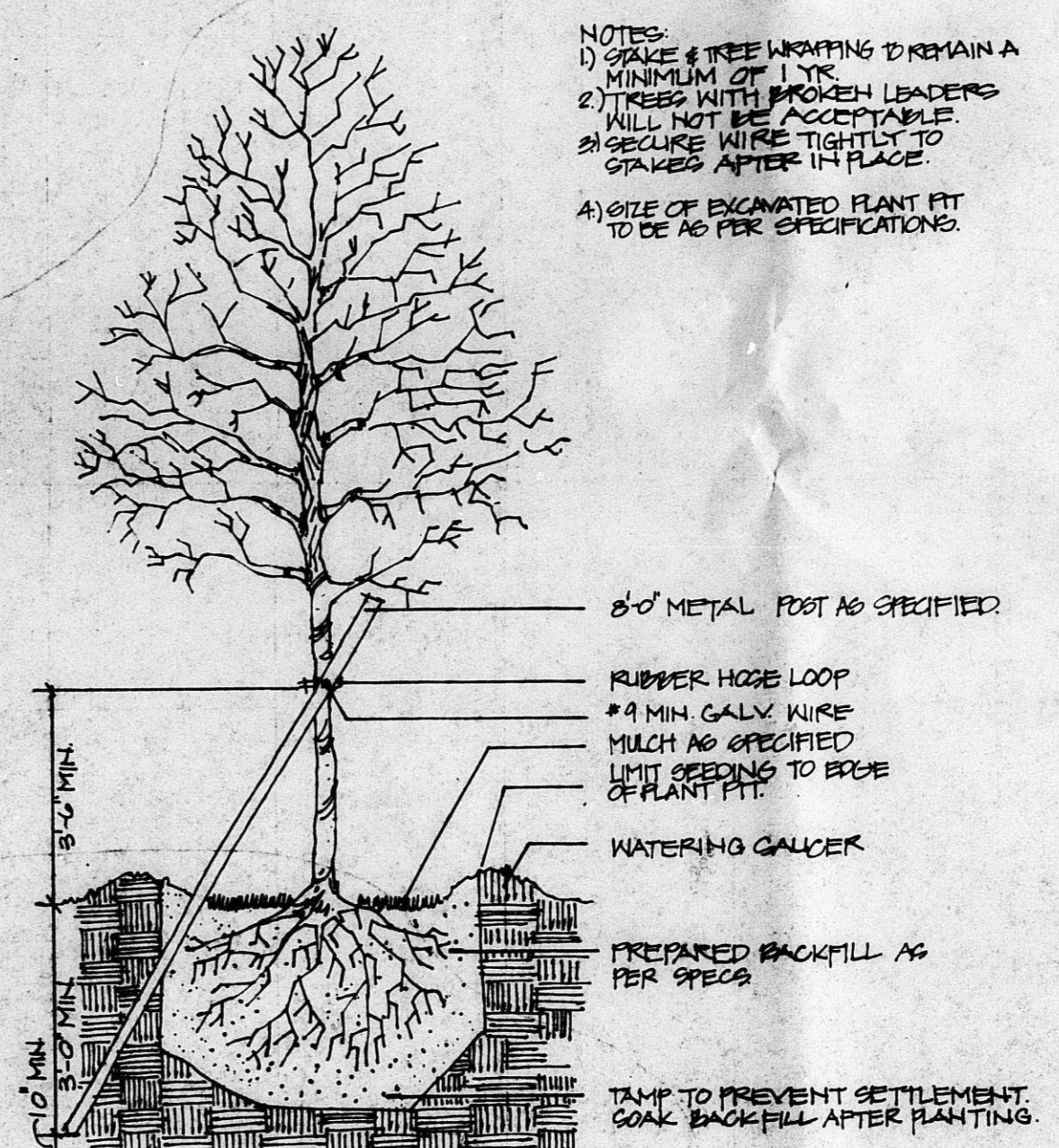
MATCH LINE - SHEET CP13



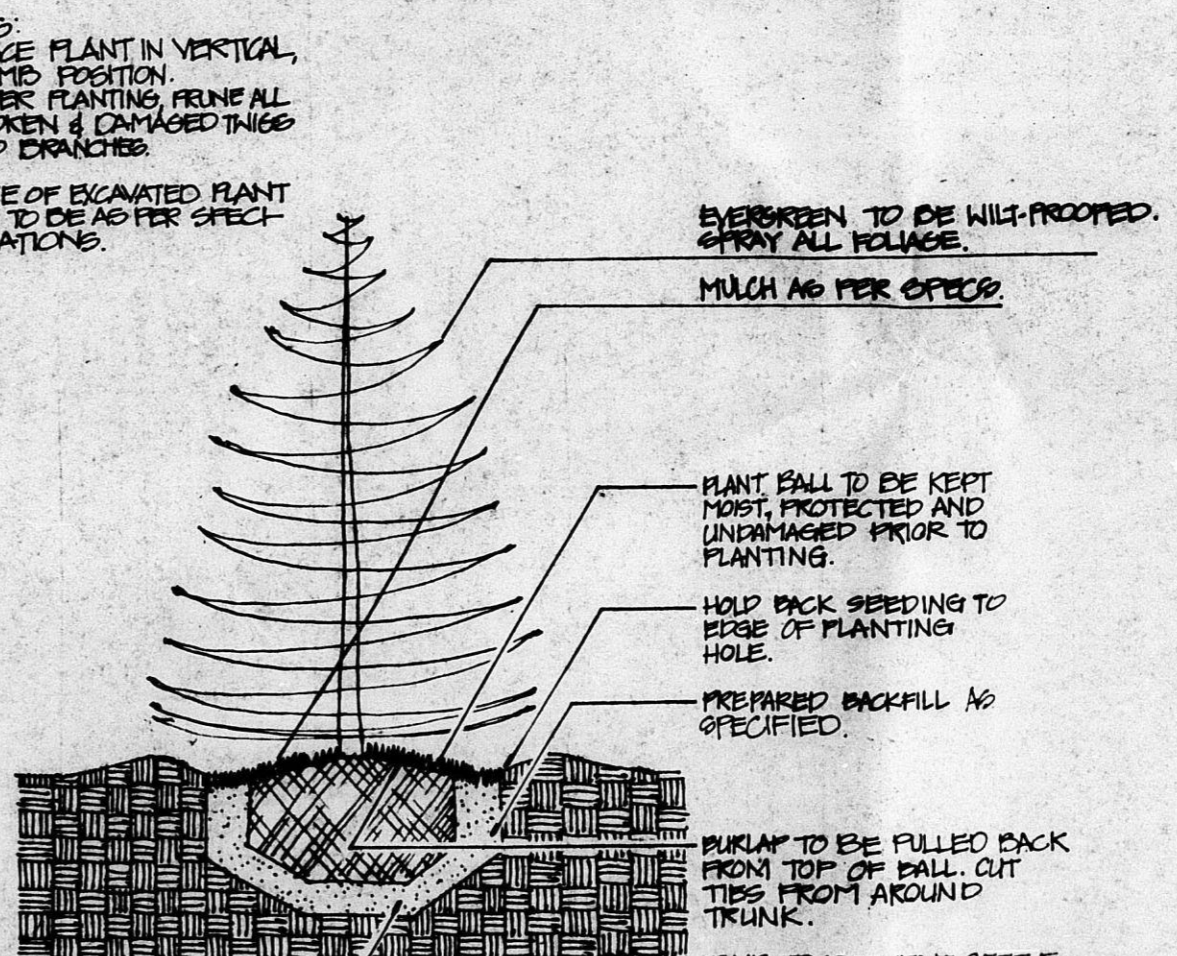
NO SCALE
TREE PLANTING DETAIL / B&B



SCALE: 1/8\"/>



NO SCALE
TREE PLANTING DETAIL / BR



NO SCALE
EVERGREEN PLANTING DETAIL

- NOTES:
- 1) STAKE AND TREE WRAPPING TO REMAIN A MINIMUM OF 1 YEAR.
 - 2) TREES WITH BROKEN LEADERS WILL NOT BE ACCEPTABLE.
 - 3) SECURE WIRE TIGHTLY TO STAKES AFTER, IN PLACE.
 - 4) SIZE OF EXCAVATED PLANT FIT TO BE AS PER SPECIFICATIONS.

- NOTES:
- 1) STAKE & TREE WRAPPING TO REMAIN A MINIMUM OF 1 YR.
 - 2) TREES WITH BROKEN LEADERS WILL NOT BE ACCEPTABLE.
 - 3) SECURE WIRE TIGHTLY TO STAKES AFTER IN PLACE.
 - 4) SIZE OF EXCAVATED PLANT FIT TO BE AS PER SPECIFICATIONS.

NOTE:
1) MULCH - SHREDDED BARK AS SPECIFIED.

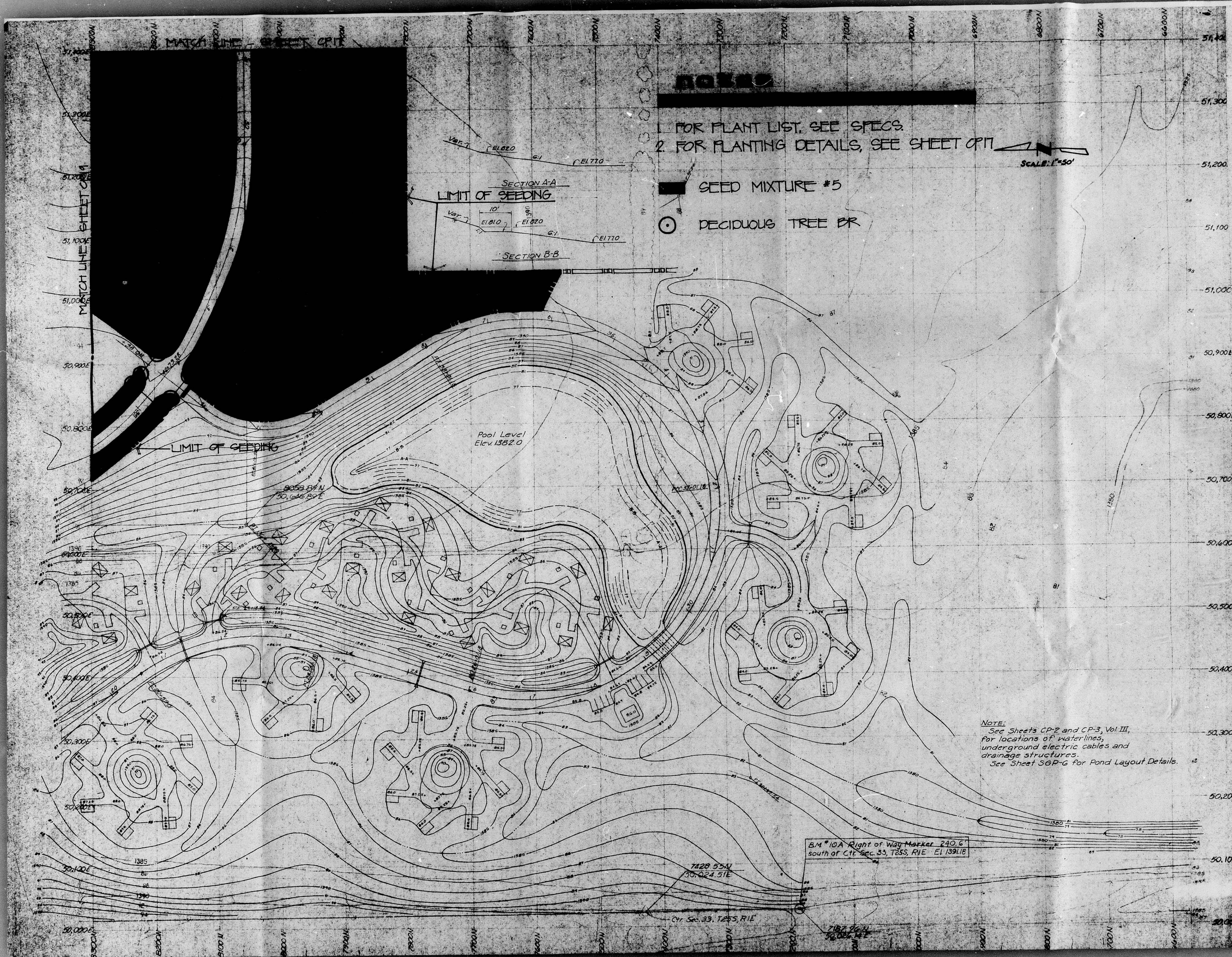
- NOTES:
- 1) PLACE PLANT IN VERTICAL PLUMB POSITION.
 - 2) AFTER PLANTING, FINE ALL BROKEN & DAMAGED TWIGS AND BRANCHES.
 - 3) SIZE OF EXCAVATED PLANT FIT TO BE AS PER SPECIFICATIONS.

Scale: 1" = 50'

oblinger-smith corporation
 Construction & Planning
 Engineering and Development
 835 First National Bank Building
 Wichita, Kansas 67202

THOMAS, HARRIS, ASH & SANCHEZ, P.C.
 111 NORTH WALDO
 WICHITA, KANSAS 67202

KANSAS COLISEUM
 SEDGWICK COUNTY, KANSAS
 BOARD OF COUNTY COMMISSIONERS
 ECONOMIC DEVELOPMENT ADMINISTRATION
 PROJECT NO. 05-1-0138
 UNITED STATES DEPARTMENT OF COMMERCE



1. FOR PLANT LIST, SEE SPECS.
 2. FOR PLANTING DETAILS, SEE SHEET OPT

- █ SEED MIXTURE #5
- DECIDUOUS TREE OR

SCALE: 1"=50'

NOTE:
 See Sheets CP-2 and CP-3, Vol. III,
 for locations of water lines,
 underground electric cables and
 drainage structures.
 See Sheet SGP-G for Pond Layout Details.

B.M. 10A Right of Way Marker 240.6
 south of C1E Sec. 33, T25S, R1E El. 1391.8

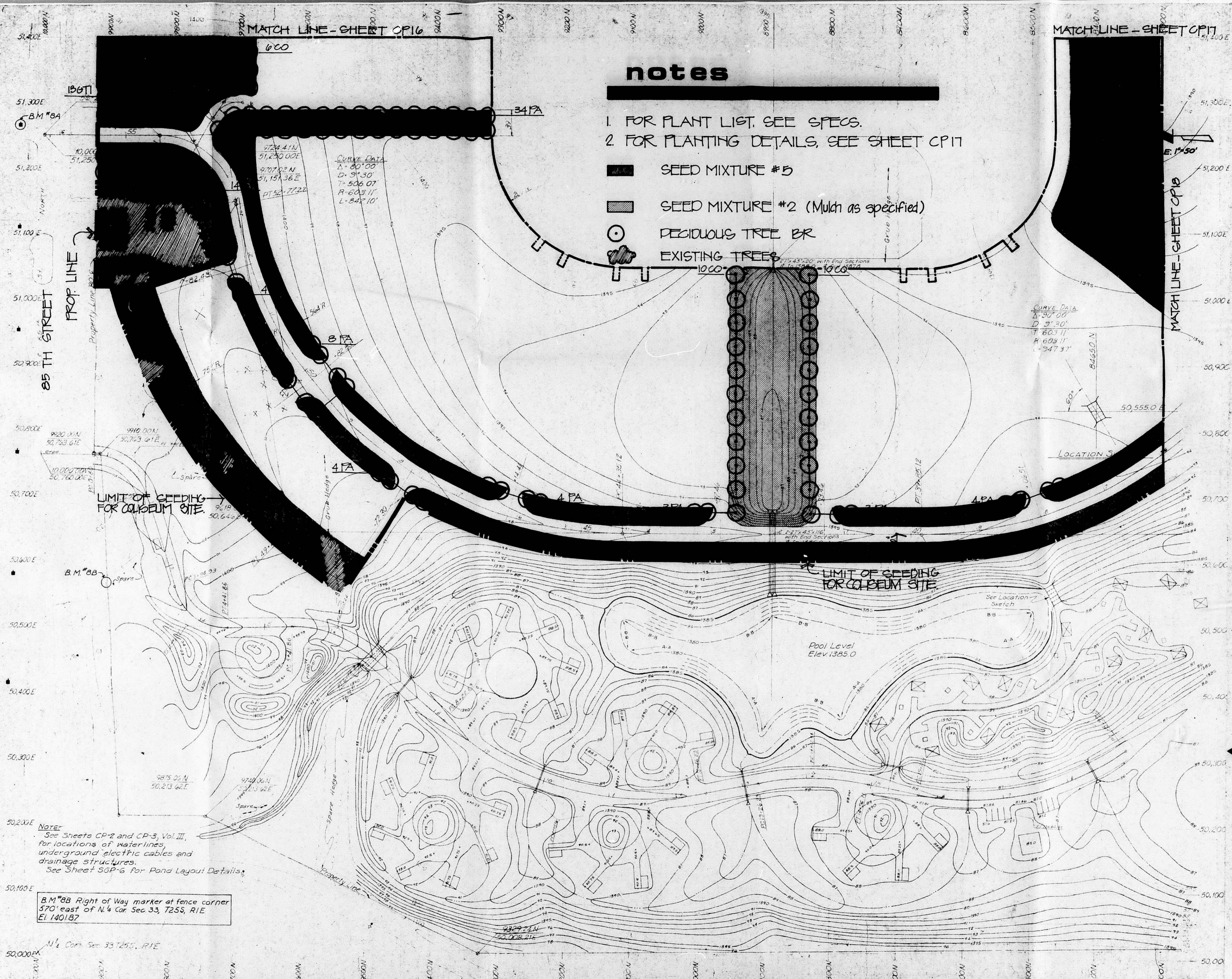
okinger-smith corporation

Consulting in Planning
 Design and Construction
 225 First National Bank Building
 Wichita, Kansas 67202

THOMAS HARRIS, P.E., M.A.S.E., A.S.T.M., A.S.T. & E. Eng.
 1200 W. 12th St., Wichita, Kansas 67202





KANSAS COLISEUM
 SEDGWICK COUNTY, KANSAS
 BOARD OF COUNTY COMMISSIONERS
 ECONOMIC DEVELOPMENT ADMINISTRATION
 PROJECT NO. 05-1-01384
 UNITED STATES DEPARTMENT OF COMMERCE

Vol. III
 cp 18
 of 19



notes

1. FOR PLANT LIST, SEE SPECS.
2. FOR PLANTING DETAILS, SEE SHEET CP17

-  SEED MIXTURE #5
-  SEED MIXTURE #2 (Mulch as specified)
-  DECIDUOUS TREE BR
-  EXISTING TREES

NOTE:
 See Sheets CP-2 and CP-3, Vol. III,
 for locations of waterlines,
 underground electric cables and
 drainage structures.
 See Sheet SGP-6 for Pond Layout Details.

B.M. #88 Right of Way marker at fence corner
 570' east of N. 4 Cor Sec 33, T25S, R1E
 El. 1401.87

N. 4 Cor Sec 33, T25S, R1E

ottlinger-smith corporation
 Engineers in Planning
 Design and Development
 1000 North Main Street
 Suite 100
 Kansas City, Missouri 64108
 Phone: 816-241-1111
 Fax: 816-241-1112

THOMAS HARRIS, ASH & MASON
 Architects & Engineers
 111 North Main
 Suite 1000
 Kansas City, Missouri 64108
 Phone: 816-241-1111
 Fax: 816-241-1112



KANSAS COLISEUM
 SEDGWICK COUNTY, KANSAS
 BOARD OF COUNTY COMMISSIONERS
 ECONOMIC DEVELOPMENT ADMINISTRATION
 PROJECT NO. 05-1-01384
 UNITED STATES DEPARTMENT OF COMMERCE

Vol. III

cp 19
 of 19