

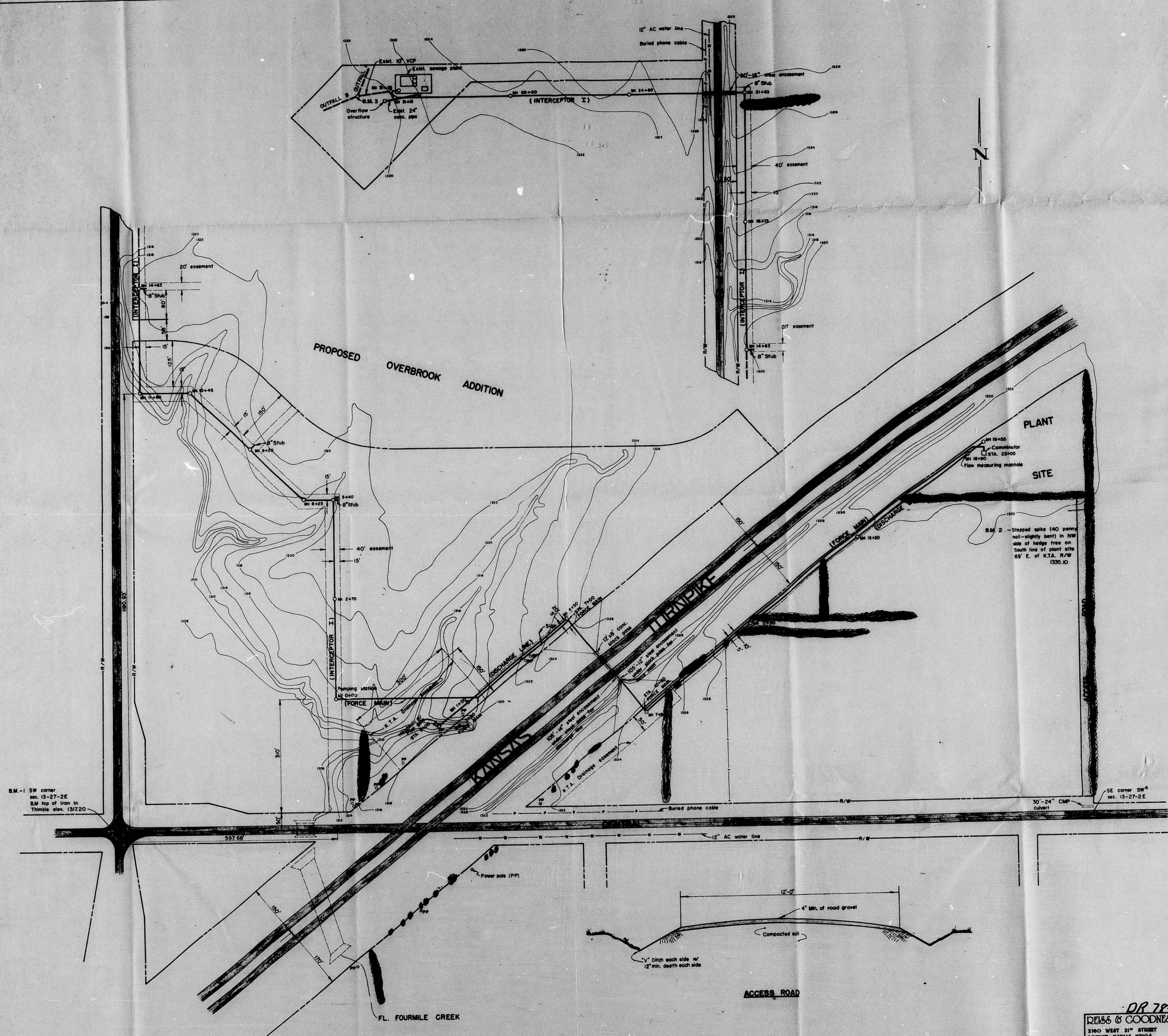
REVISION	DRAWN BY	CHECKED BY	DESIGNED BY	PROJECT
				SEWAGE TREATMENT PLANT RELOCATION

CUSTOMER **CRESTVIEW IMPROVEMENT DISTRICT SEDGWICK CO. KANSAS**

DR 78-8
REISS & GOODNESS ENGINEERS
 2300 WEST 21ST STREET
 WICHITA, KANSAS 67204
 (316) 632-0253

SCALE: Given
 DATE: 10-3-77
 PROJECT NO.:
 SHEET 7 OF 13

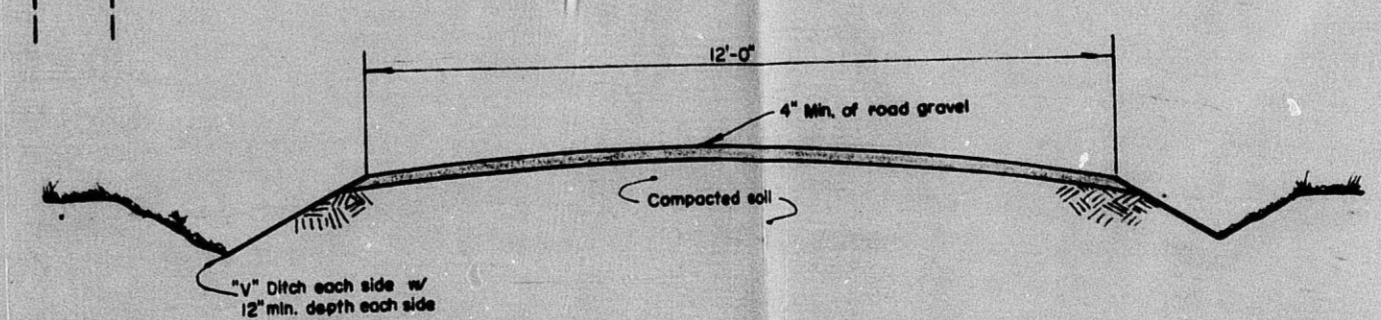
FILMED FROM THE BEST AVAILABLE COPY



B.M. - 1 SW corner
sec. 13-27-2E
B.M. top of iron in
Thimble elev. 1317.20



PLANT
SITE
Sta. 22+00
Sta. 19+00
Flow measuring manhole
B.M. 2 - Stepped spike (40 penny
nail - slightly bent) in NW
side of hedge tree on
south line of about site
69' E. of K.T.A. R/W
1335.10



DR 78-8
DEISS & GOODNESS ENGINEERS
2100 WEST 31ST STREET
WICHITA, KANSAS 67204
(316) 625-0253

FILMED FROM THE BEST
AVAILABLE COPY