

SITE PLAN



DR 78-38 **APPROVED**

OFFICE COPY
DO NOT REMOVE

SOUTHWESTERN BELL TELEPHONE

SERVICE OPERATION CENTER

1401 E. 47 TH STREET SOUTH

ASSOCIATE ARCHITECTS:
PETTIT & BULLINGER ARCHITECTS

DR-78-38

'AA' RESIDENTIAL

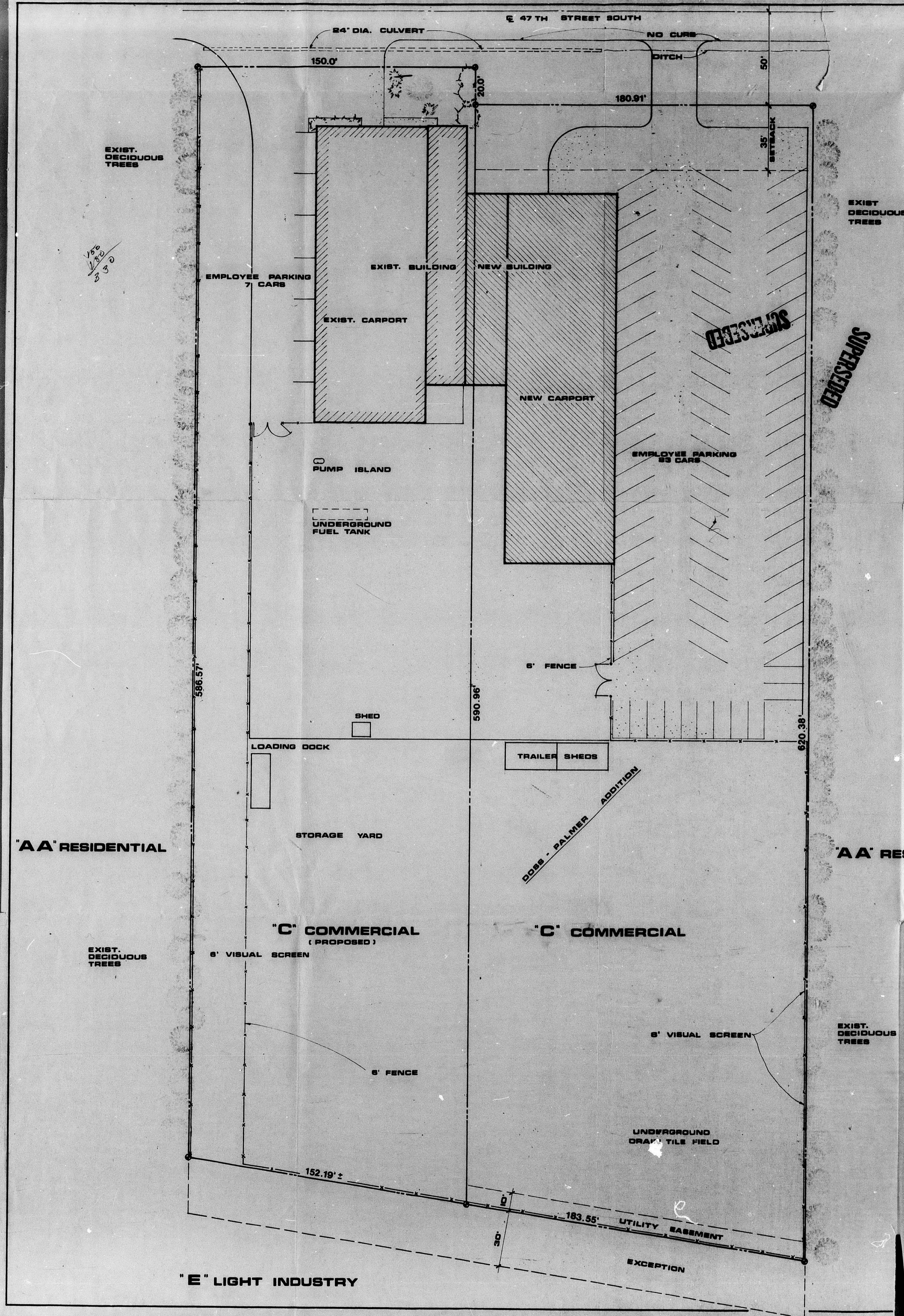
'AA' RESIDENTIAL

'C' COMMERCIAL
(PROPOSED)

'C' COMMERCIAL

'E' LIGHT INDUSTRY

FILMED FROM THE BEST AVAILABLE COPY



SITE PLAN



~~SUPERSEDED~~

DR 78-38

**SOUTHWESTERN
BELL TELEPHONE**

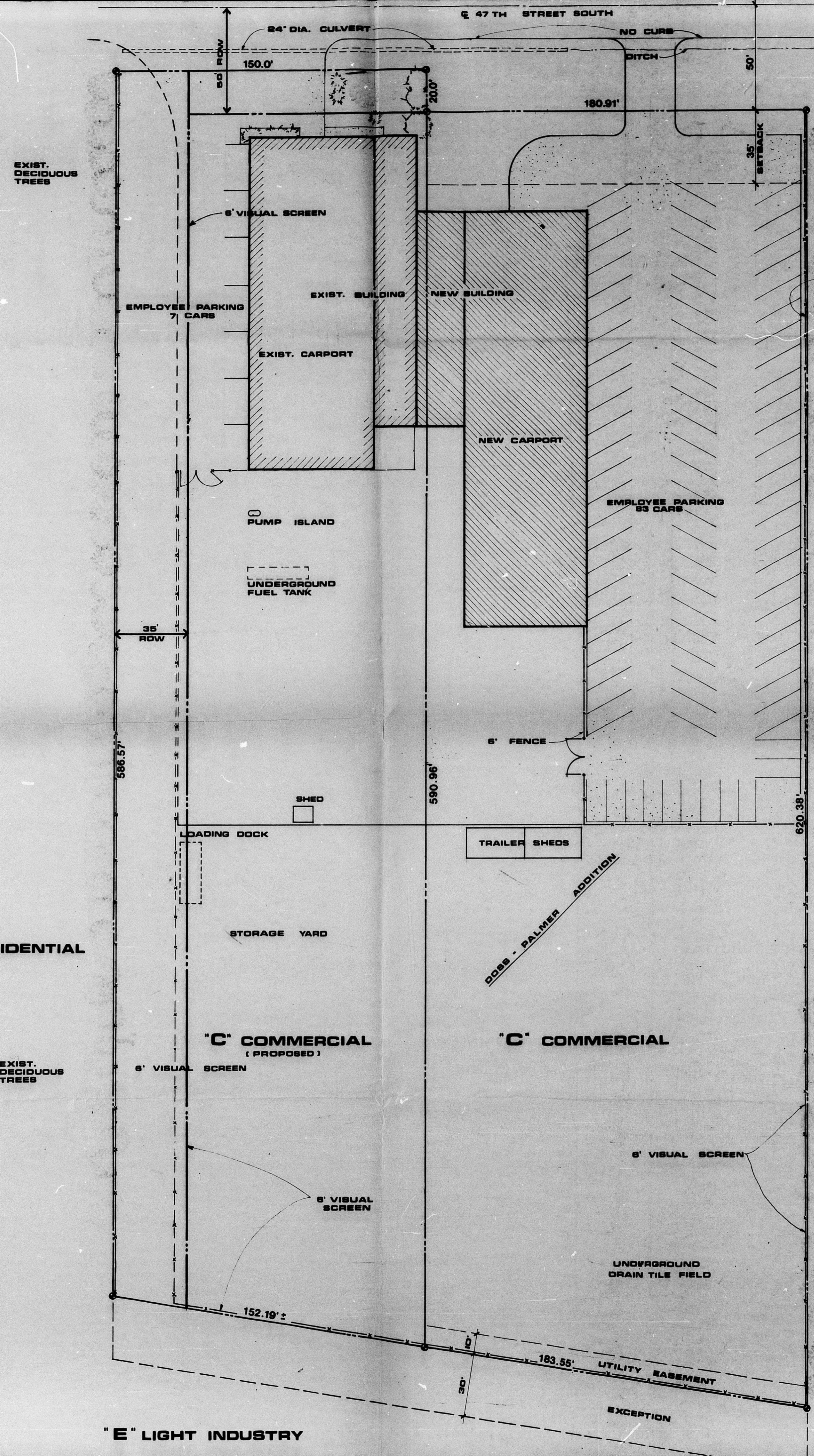
**SERVICE
OPERATION
CENTER**

1401 E. 47 TH STREET SOUTH

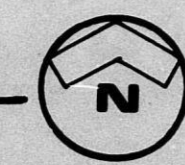
ASSOCIATE ARCHITECTS:
PETTIT & BULLINGER ARCHITECTS

~~SUPERSEDED~~

FILMED FROM THE BEST
AVAILABLE COPY.....



SITE PLAN



OFFICE COPY
DO NOT REMOVE

DR 78-38 APPROVED

MAPC 1-4-79
DCC 1-30-79

**SOUTHWESTERN
BELL TELEPHONE**

**SERVICE
OPERATION
CENTER**

1401 E. 47 TH STREET SOUTH

ASSOCIATE ARCHITECTS:
PETTIT & BULLINGER ARCHITECTS

"AA" RESIDENTIAL

"AA" RESIDENTIAL

"C" COMMERCIAL
(PROPOSED)

"C" COMMERCIAL

"E" LIGHT INDUSTRY

DR 78-38

FILMED FROM THE BEST
AVAILABLE COPY