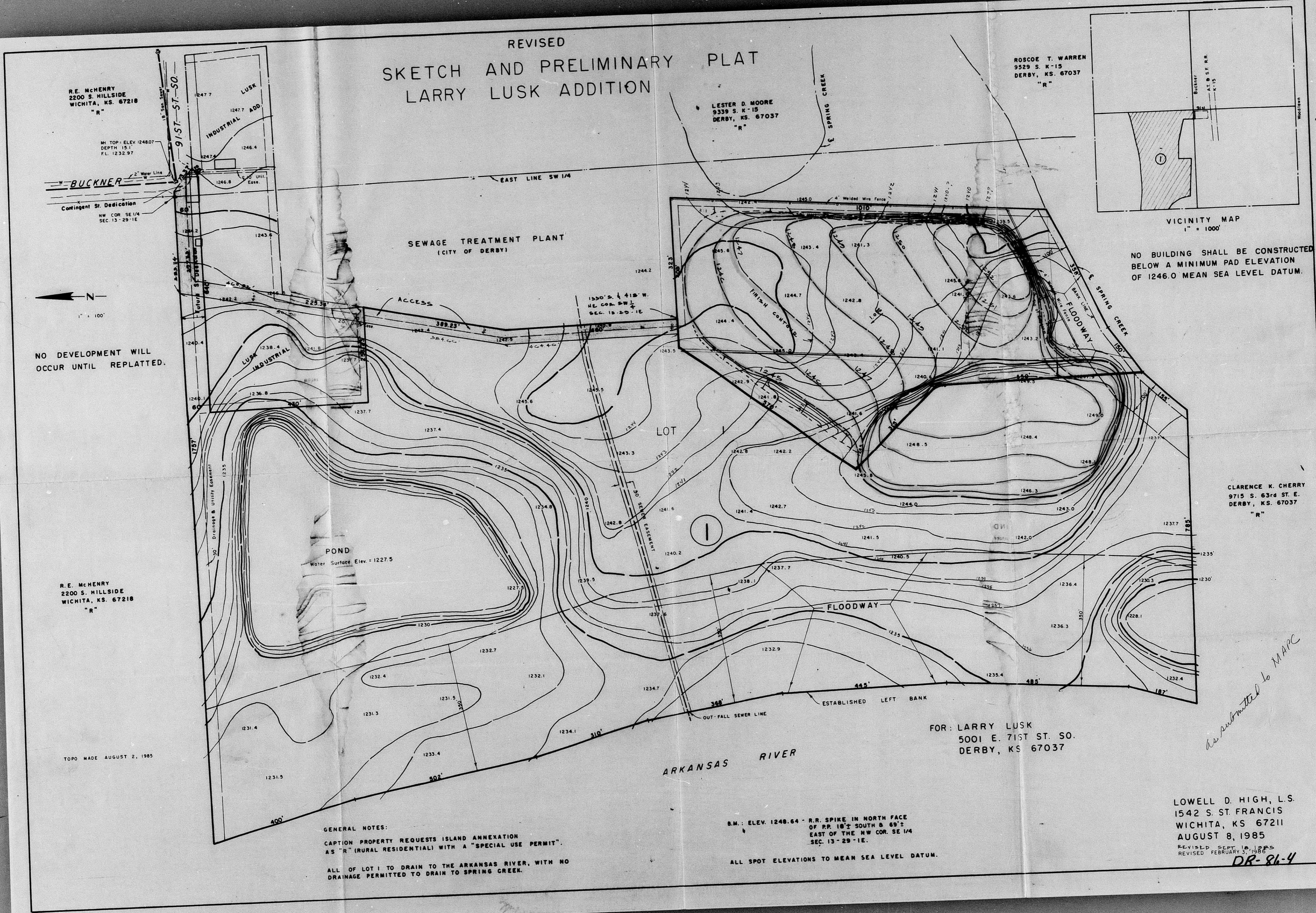


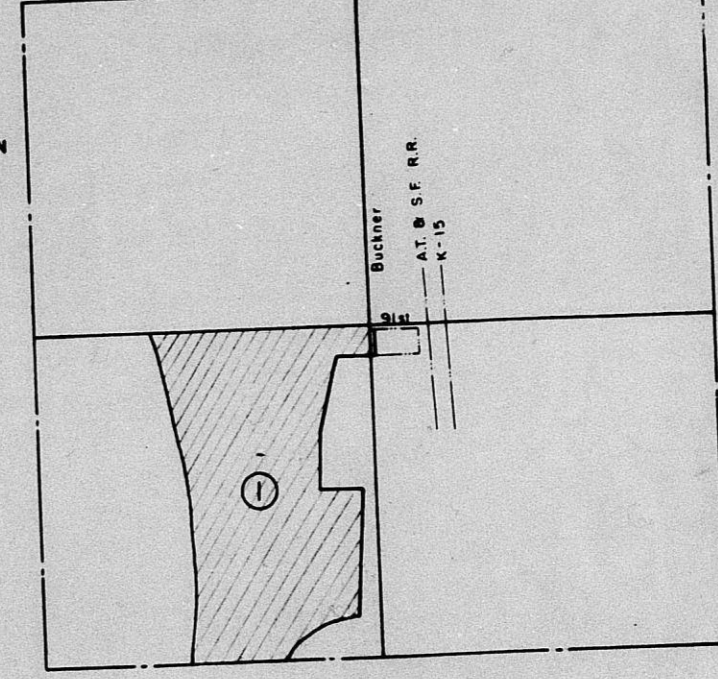
REVISED  
 SKETCH AND PRELIMINARY PLAT  
 LARRY LUSK ADDITION



R.E. McHENRY  
 2200 S. HILLSIDE  
 WICHITA, KS. 67218  
 "R"

LESTER D. MOORE  
 9339 S. K-15  
 DERBY, KS. 67037  
 "R"

ROSCOE T. WARREN  
 9529 S. K-15  
 DERBY, KS. 67037  
 "R"



NO BUILDING SHALL BE CONSTRUCTED  
 BELOW A MINIMUM PAD ELEVATION  
 OF 1246.0 MEAN SEA LEVEL DATUM.

NO DEVELOPMENT WILL  
 OCCUR UNTIL REPLATTED.

R.E. McHENRY  
 2200 S. HILLSIDE  
 WICHITA, KS. 67218  
 "R"

CLARENCE K. CHERRY  
 9715 S. 63rd ST. E.  
 DERBY, KS. 67037  
 "R"

FOR: LARRY LUSK  
 5001 E. 71ST ST. SO.  
 DERBY, KS 67037

*Submitted to MARC*

LOWELL D. HIGH, L.S.  
 1542 S. ST. FRANCIS  
 WICHITA, KS 67211  
 AUGUST 8, 1985  
 REVISED SEPT. 10, 1985  
 REVISED FEBRUARY 3, 1986  
**DR-81-4**

GENERAL NOTES:  
 CAPTION PROPERTY REQUESTS ISLAND ANNEXATION  
 AS "R" (RURAL RESIDENTIAL) WITH A "SPECIAL USE PERMIT".  
 ALL OF LOT 1 TO DRAIN TO THE ARKANSAS RIVER, WITH NO  
 DRAINAGE PERMITTED TO DRAIN TO SPRING CREEK.

B.M.: ELEV. 1248.64 - R.R. SPIRE IN NORTH FACE  
 OF RR. 18' SOUTH & 69' E  
 EAST OF THE NW COR. SE 1/4  
 SEC. 13-29-1E.  
 ALL SPOT ELEVATIONS TO MEAN SEA LEVEL DATUM.

TOPO MADE AUGUST 2, 1985

MAP COPY 1 of 2

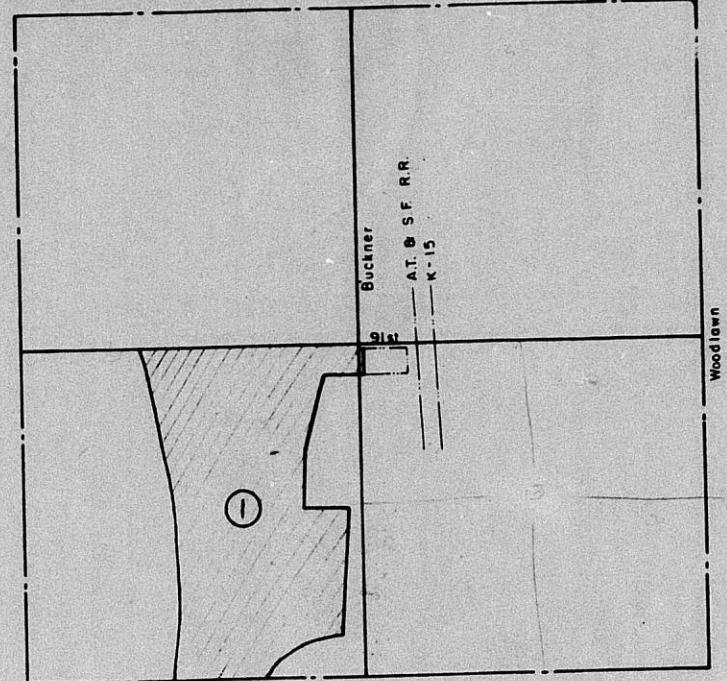
DEMOLITION CONSTRUCTION LANDFILL

DR 86-4  
BOC APPROVED 4-15-87  
GRADING AND DRAINAGE PLAN

R.E. McHENRY  
2200 S. HILLSIDE  
WICHITA, KS. 67218  
"R"

LESTER D. MOORE  
9339 S. K-15  
DERBY, KS. 67037  
"R"

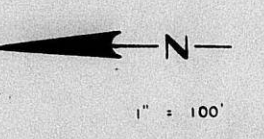
ROSCOE T. WARREN  
9529 S. K-15  
DERBY, KS. 67037  
"R"



VICINITY MAP  
1" = 1000'

BUCKNER  
Contingent St. Dedication  
NW COR. SE 1/4  
SEC. 13-29-1E

SEWAGE TREATMENT PLANT  
(CITY OF DERBY)



R.E. McHENRY  
2200 S. HILLSIDE  
WICHITA, KS. 67218  
"R"

CLARENCE K. CHERRY  
9715 S. 63rd ST. E.  
DERBY, KS. 67037  
"R"

TOPO MADE AUGUST 2, 1985

FOR: LARRY LUSK  
5001 E. 71ST ST. SO.  
DERBY, KS 67037

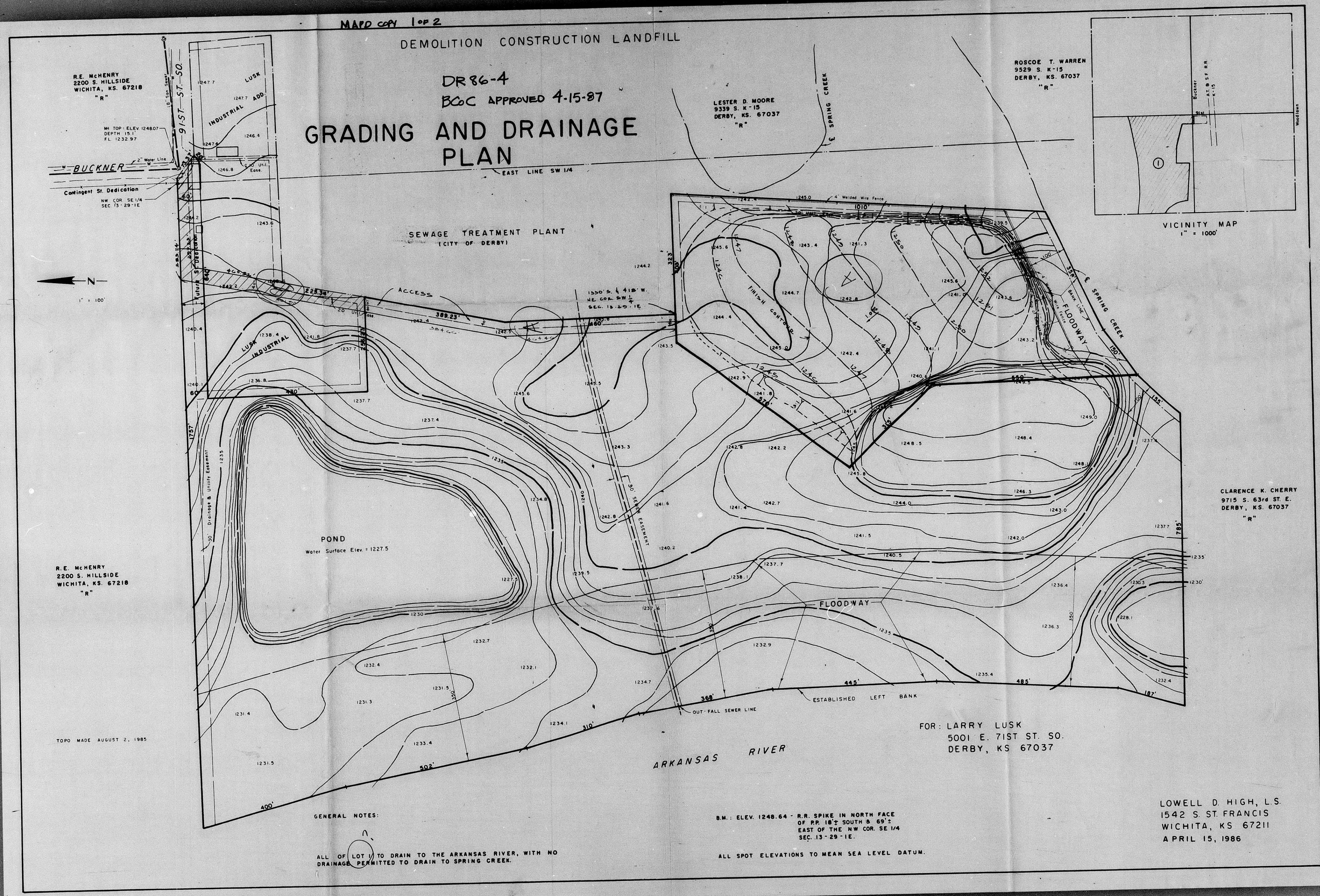
LOWELL D. HIGH, L.S.  
1542 S. ST. FRANCIS  
WICHITA, KS 67211  
APRIL 15, 1986

GENERAL NOTES:

ALL OF LOT 11 TO DRAIN TO THE ARKANSAS RIVER, WITH NO DRAINAGE PERMITTED TO DRAIN TO SPRING CREEK.

B.M.: ELEV. 1248.64 - R.R. SPIKE IN NORTH FACE OF PP. 18" SOUTH & 69" EAST OF THE NW COR. SE 1/4 SEC. 13-29-1E.

ALL SPOT ELEVATIONS TO MEAN SEA LEVEL DATUM.

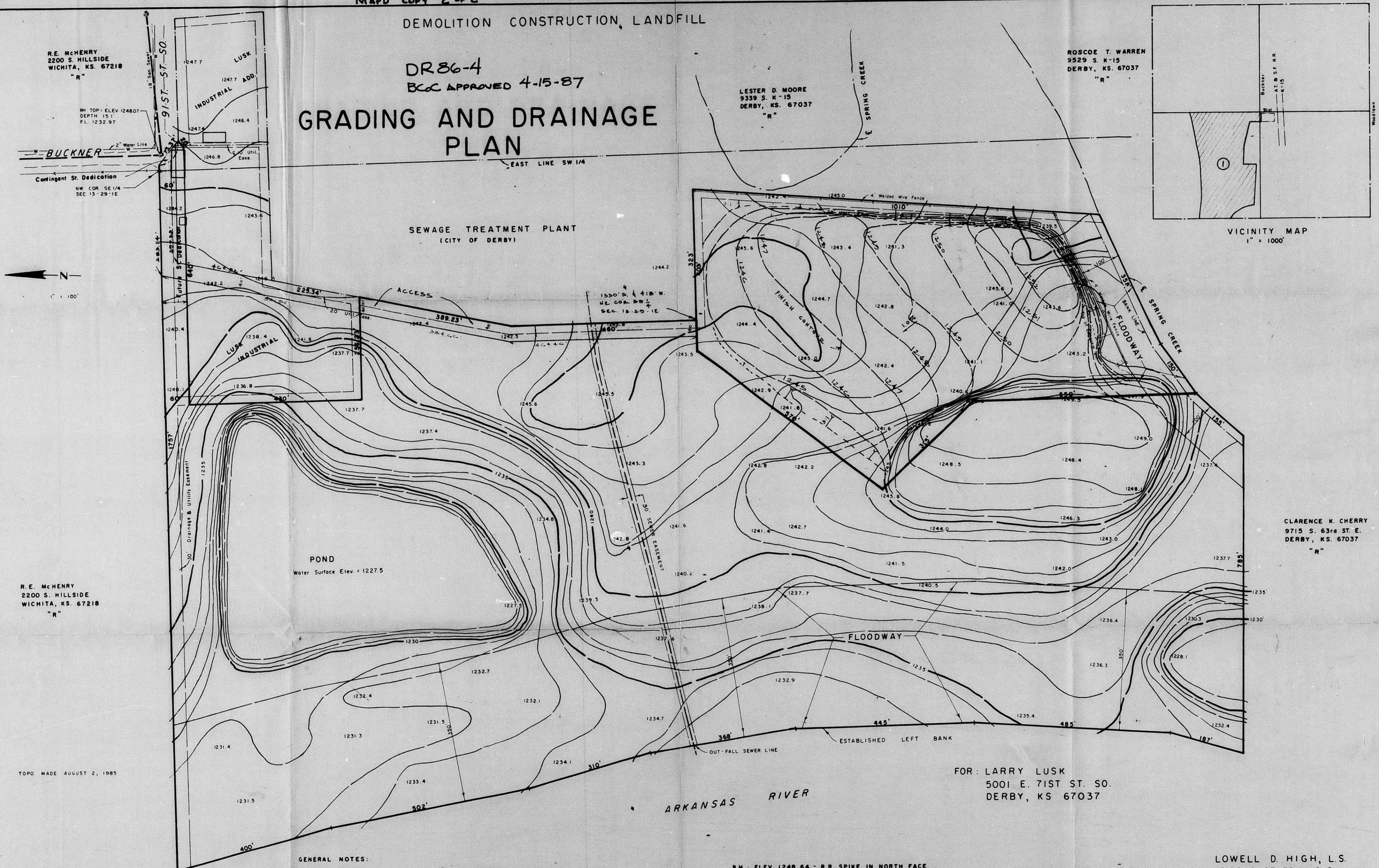


MAP COPY 2 OF 2

DEMOLITION CONSTRUCTION, LANDFILL

DR86-4  
BCC APPROVED 4-15-87

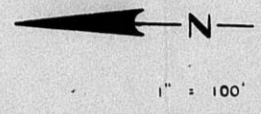
# GRADING AND DRAINAGE PLAN



R. E. MCHENRY  
2200 S. HILLSIDE  
WICHITA, KS. 67218  
"R"

M. TOP: ELEV 1248.07  
DEPTH 15.1  
FL. 1232.97

BUCKNER  
Contingent St. Dedication  
NW COR. SE 1/4  
SEC. 13-29-1E



TOPO MADE AUGUST 2, 1985

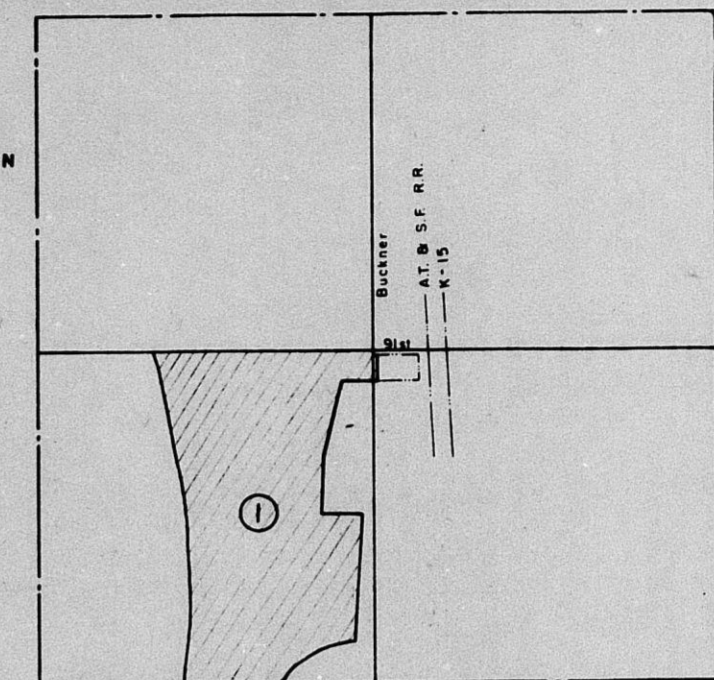
R. E. MCHENRY  
2200 S. HILLSIDE  
WICHITA, KS. 67218  
"R"

SEWAGE TREATMENT PLANT  
(CITY OF DERBY)

POND  
Water Surface Elev = 1227.5

LESTER D. MOORE  
9339 S. K-15  
DERBY, KS. 67037  
"R"

ROSCOE T. WARREN  
9529 S. K-15  
DERBY, KS. 67037  
"R"



CLARENCE K. CHERRY  
9715 S. 63rd ST. E.  
DERBY, KS. 67037  
"R"

FOR: LARRY LUSK  
5001 E. 71ST ST. SO.  
DERBY, KS 67037

GENERAL NOTES:

ALL OF LOT 1 TO DRAIN TO THE ARKANSAS RIVER, WITH NO DRAINAGE PERMITTED TO DRAIN TO SPRING CREEK.

B.M.: ELEV. 1248.64 - R.R. SPIKE IN NORTH FACE OF RR 18<sup>TH</sup> SOUTH & 69<sup>TH</sup> EAST OF THE NW COR. SE 1/4 SEC. 13-29-1E.

ALL SPOT ELEVATIONS TO MEAN SEA LEVEL DATUM.

LOWELL D. HIGH, L.S.  
1542 S. ST. FRANCIS  
WICHITA, KS 67211  
APRIL 15, 1986