

4 LANES
PATRON INGRESS/EGRESS

3 LANES
3 LANES

3 LANES

NOTE: CONTRACTOR TO USE DIMENSIONS AND COORDINATE REFERENCES FOR LAYOUT OF FACILITIES. DO NOT SCALE DRAWING FOR LAYOUT PURPOSES.

LEGEND

- ▲ NORMAL DIRECTION OF TRAVEL
- ◄ REVERSIBLE LANE
- 1531 PARKING CAPACITY

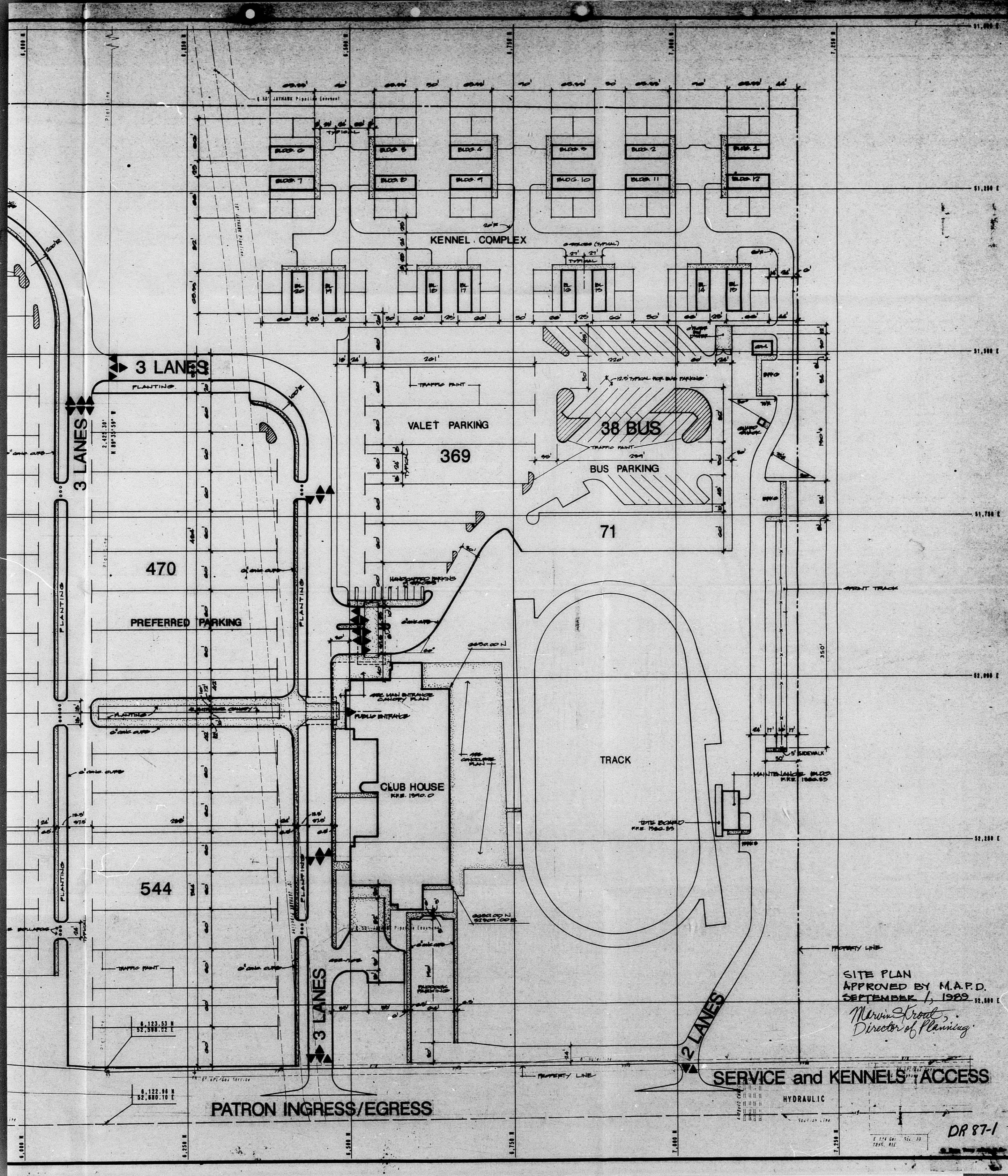
PARKING and CIRCULATION PLAN

SITE LAYOUT PLAN
SCALE: 1"=60'

LEGEND

- C&G CURB
- CONCRETE PAVING
- TRAFFIC PAINT

PATRON EGRESS ONLY



SITE PLAN
 APPROVED BY M.A.P.D.
 SEPTEMBER 1, 1983
 Marvin Street,
 Director of Planning

WICHITA GREYHOUND PARK
 WICHITA, KANSAS

EVERETT ASSOCIATES
 CONSULTANT
 Everett Associates, Inc.
 217 North Broadway
 Wichita, Kansas 67202
 (316) 261-1111

Malcolm L. Sokol AIA
 ARCHITECT
 Malcolm L. Sokol, Architect
 217 North Broadway
 Wichita, Kansas 67202
 (316) 261-1111

Revisions

TITLE
 PARKING and
 CIRCULATION
 PLAN

NO.	DATE	BY	CHKD.
2076			
1			
1			

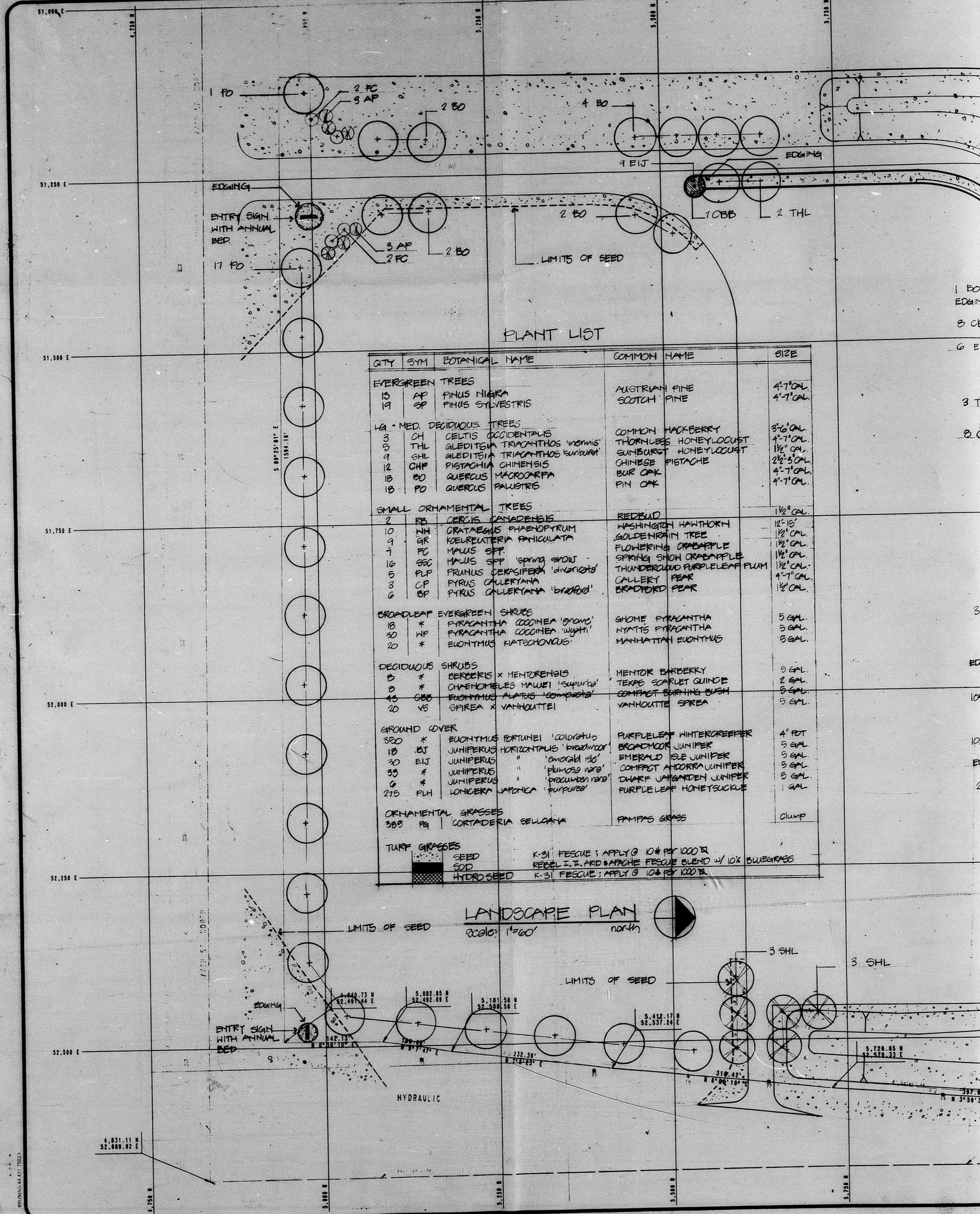
DR 87-1

MICHLIN KUNZLER
 MICHLIN CONSULTING BUREAU

CONSULTANT
 MICHLIN CONSULTING BUREAU

MICHLIN
 MICHLIN CONSULTING BUREAU

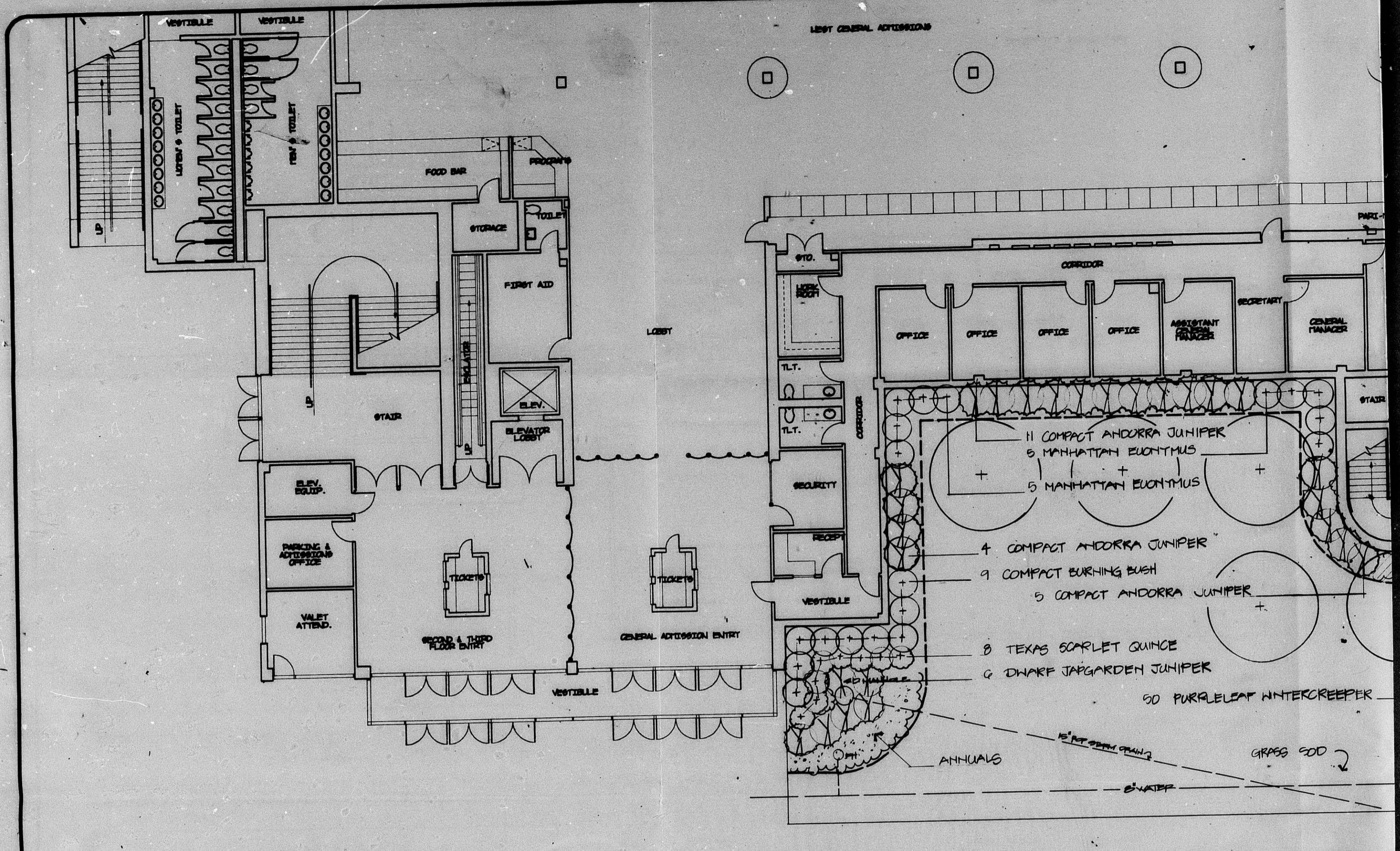
MICHLIN
 MICHLIN CONSULTING BUREAU



PLANT LIST

QTY	SYM	BOTANICAL NAME	COMMON NAME	SIZE
EVERGREEN TREES				
15	AP	PINUS NIGRA	AUSTRIAN PINE	4"-7" CAL.
19	SP	PINUS SYLVESTRIS	SCOTCH PINE	4"-7" CAL.
LA-MED. DECIDUOUS TREES				
3	CH	CELTIS OCCIDENTALIS	COMMON HACKBERRY	3"-6" CAL.
3	THL	GLEDITSIA TRIACANTHOS 'INFORMIS'	THORNLESS HONEYLOCUST	4"-7" CAL.
4	SHL	GLEDITSIA TRIACANTHOS 'SUNBURST'	SUNBURST HONEYLOCUST	1 1/2" CAL.
12	CHP	PISTACHIA CHINENSIS	CHINESE PISTACHE	2 1/2" CAL.
18	BO	QUERCUS MACROCARPA	BUR OAK	4"-7" CAL.
18	PO	QUERCUS PALUSTRIS	PIN OAK	4"-7" CAL.
SMALL ORNAMENTAL TREES				
2	RB	CERCIS CANADENSIS	REDBUD	1 1/2" CAL.
10	NH	CRATAEGUS PHAENOPYRUM	WASHINGTON HAWTHORN	1 1/2" CAL.
9	GR	KOELREUTERIA PANICULATA	GOLDENRAIN TREE	1 1/2" CAL.
7	PC	MAIUS SPP.	FLORERING ORANGE	1 1/2" CAL.
16	SEC	MAIUS SPP. 'SPRING SNOW'	SPRING SNOW ORANGE	1 1/2" CAL.
5	PLP	FRAXINUS OXYCARPA 'LINDGREN'	THUNDERBOLD PURPLELEAF FLUM	1 1/2" CAL.
3	CP	PYRUS CALLERYANA	CALLERY PEAR	4"-7" CAL.
6	BP	PYRUS CALLERYANA 'BRADFORD'	BRADFORD PEAR	1 1/2" CAL.
BROADLEAF EVERGREEN SHRUBS				
18	*	PIRACANTHA COCCINEA 'GROSS'	SHOME PIRACANTHA	5 GAL.
20	WP	PIRACANTHA COCCINEA 'WYATT'	WYATT PIRACANTHA	5 GAL.
20	*	EUCHYRIUM HATSCHONDIUS	MANHATTAN EUCHYRIUM	5 GAL.
DECIDUOUS SHRUBS				
8	*	BERBERIS X MENTORENSIS	MENTOR BARBERRY	5 GAL.
8	*	QUERQUILLIA MAUII 'SAFARI'	TEXAS SCARLET QUINCE	2 GAL.
10	GBB	FRAXINUS ALABAMA 'COMPACTA'	COMPACT BURNING BUSH	5 GAL.
20	VS	SPIREA X VANHOUTEI	VANHOUTEI SPIREA	5 GAL.
GROUND COVER				
300	*	EUCHYRIUM FORTUNEI 'COLUMBIAN'	PURPLELEAF WINTERGREEN	4" POT
18	BT	JUNIPERUS HORIZONTALIS 'BROADWOOD'	BROADWOOD JUNIPER	5 GAL.
20	EIJ	JUNIPERUS 'EMERALD ICE'	EMERALD ICE JUNIPER	5 GAL.
30	*	JUNIPERUS 'PLUMBOUS NANA'	COMPACT PLUMBER JUNIPER	5 GAL.
6	*	JUNIPERUS 'PROCESSIONARY'	PROCESSIONARY JUNIPER	5 GAL.
275	PLH	LONICERA JAPONICA 'PURPUREA'	PURPLELEAF HONEYSUCKLE	1 GAL.
ORNAMENTAL GRASSES				
300	PA	CORTADERIA SELLOANA	PAMPAS GRASS	CLUMP
TURF GRASSES				
SEED K-31 FESCUE; APPLY @ 10# PER 1000 SQ. FT.				
SOD REBEL II, LAND BARGE FESCUE BLEND w/ 10% BLUEGRASS				
HYDRO SEED K-31 FESCUE; APPLY @ 10# PER 1000 SQ. FT.				

LANDSCAPE PLAN
 Scale: 1"=60'



SPECIFICATIONS:

1. LANDSCAPE EDGING SHALL BE PERMALOC ALUMINUM EDGING 1/8" X 4" MILL FINISH. EDGING TO BE IN 16' SECTIONS. EACH SECTION TO INCLUDE FOUR LINE STAKES & ONE SPICER STAKE. INSTALL AS PER MANUFACTURER'S INSTRUCTIONS. CALL PERMALOC @ 1-800-336-9660. ASK FOR MICHELLE MITZ.
2. WEED BARRIER SHALL BE DEWITT WEED BARRIER FABRIC; 20-MIL. NOVEN FLAT REBON POLYPROPYLENE WITH A FACING OF POLYPROPYLENE, NEEDLE-PUNCHED FIBER. INSTALL AS PER MANUFACTURER'S INSTRUCTIONS. DO NOT INSTALL IN GROUND COVER OR ANNUAL FLOWER BEDS OR IF COTTONSEED HULL MULCH IS USED.
3. MULCH SHALL BE 3'-4" DEPTH COTTONSEED HULLS IF AVAILABLE. 2'-3" DEPTH SEASONED SHREDDED CYPRESS MULCH MAY BE SUBSTITUTED.
4. ALL CHANGE ORDERS MUST BE SUBMITTED IN WRITING & ARE SUBJECT TO APPROVAL OF THE LANDSCAPE ARCHITECT.

TERRY XXXX 2016.PLC

