



NOTES

1. EDGE BEDS W/ BLACK DIAMOND EDGING BY VALLEYVIEW OR APPROVED EQUAL. INSTALL PLANTINGS USING SYRUM, FEAT MOSS & MILORANITE FERTILIZER OF EQUAL PER MANUFACTURER'S INSTRUCTIONS. INSTALL SHREDDED CYPRESS MULCH IN A UNIFORM 2 1/2" - 3" LAYER THROUGHOUT SHRUB BEDS ALONG W/ PRE-EMERGENT WEED CONTROL. (PROVIDE BID OPTION FOR BUILDEX MULCH)
2. WATERING: SHRUB BEDS & LAWN AREAS TO BE WATERED BY AN AUTOMATIC IRRIGATION SYSTEM.
3. VERIFY UNDERGROUND UTILITIES BY FLAGGING W/ KANSAS ONE-CALL (SAFE-DIG) @ 1-800-344-7233 PRIOR TO INSTALLATION OF IRRIGATION SYSTEM, PLANTINGS OR OTHER IMPROVEMENTS WHICH MAY DAMAGE EXISTING UTILITY LINES. VERIFY ANY REVISIONS TO LAYOUT W/ LANDSCAPE ARCHITECT.

APPROVED LANDSCAPE PLAN
SEE LETTER OF 5-30-90

Marcia K. Krost
DIR. OF PLANNING

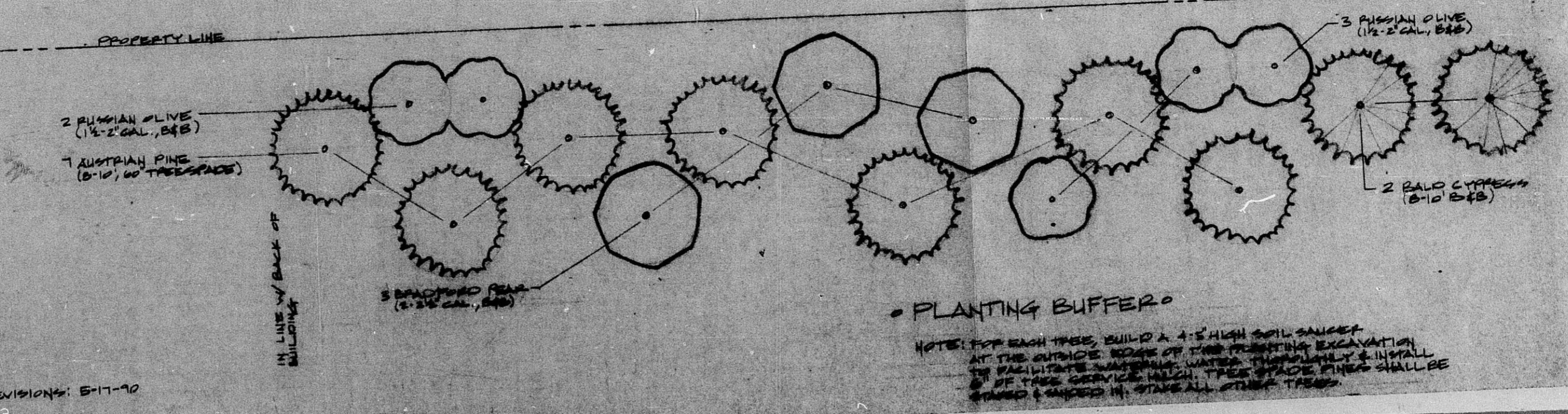
Walter H. Johnson
SUPT. CENT. INS.

THE INN AT WILLOWBEND

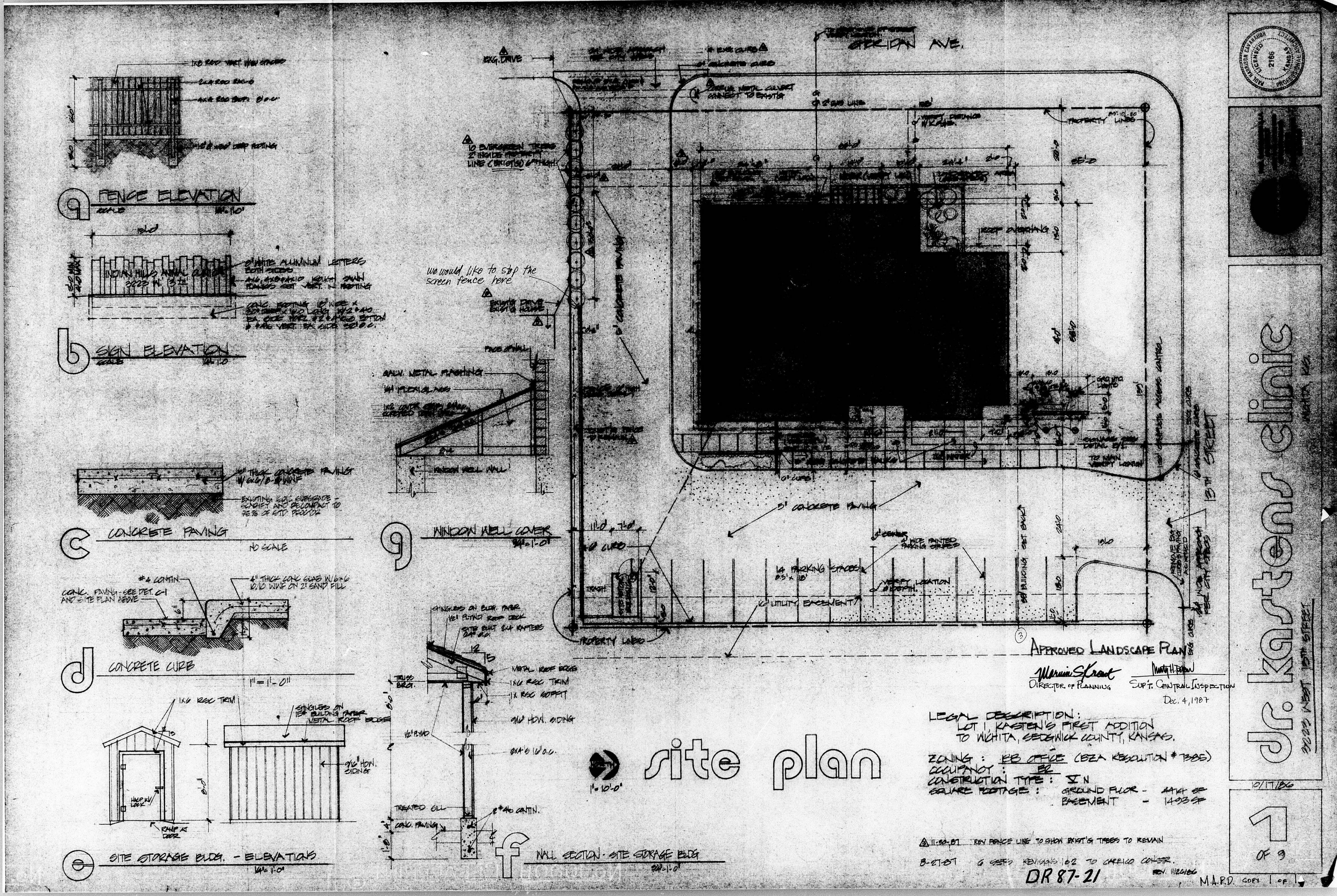
DR97-21

N.A.P.D. COPY 1 of 1

REVISIONS: 5-17-90



NOTE: FOR EACH TREE, BUILD A 4\"/>



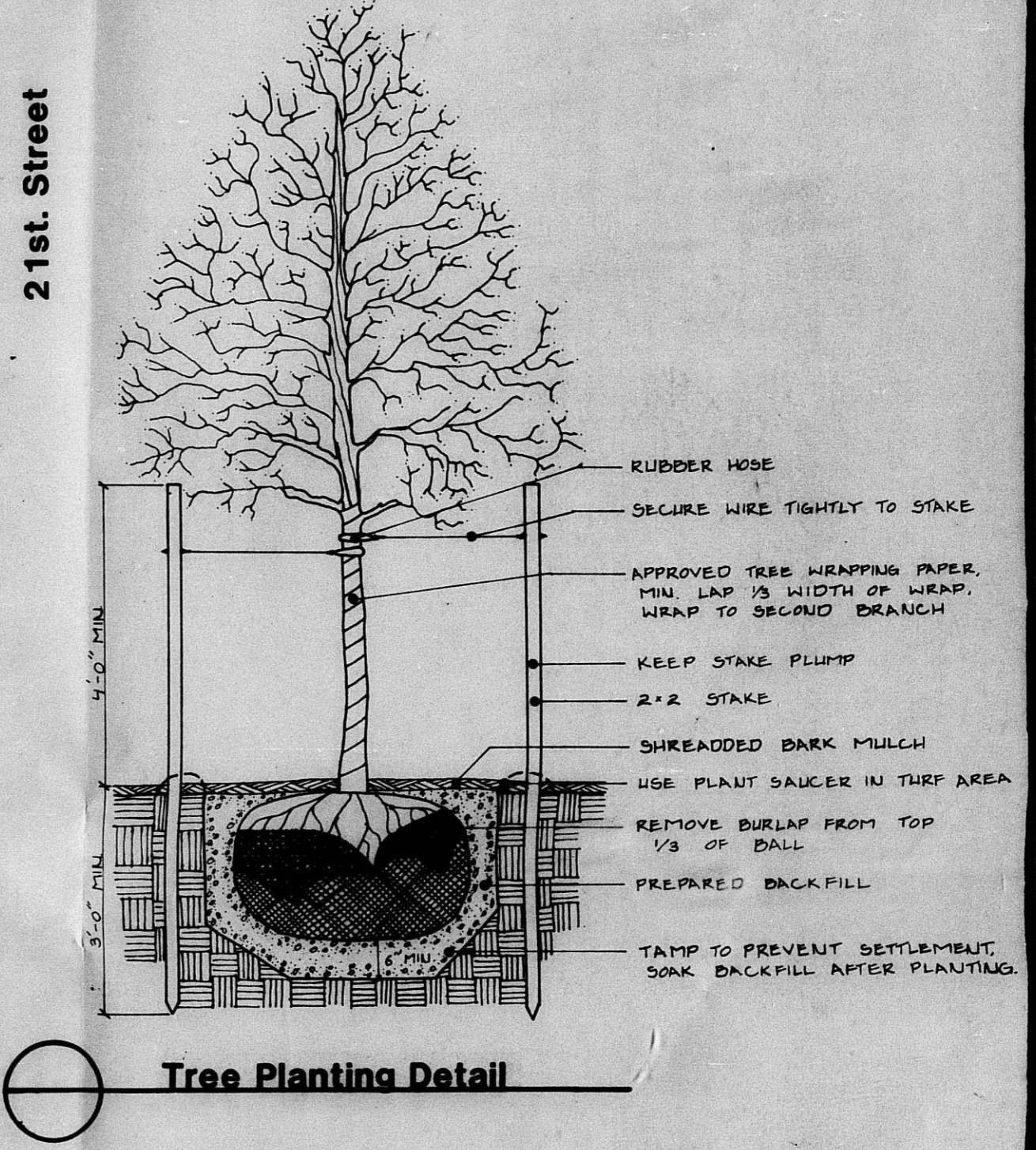
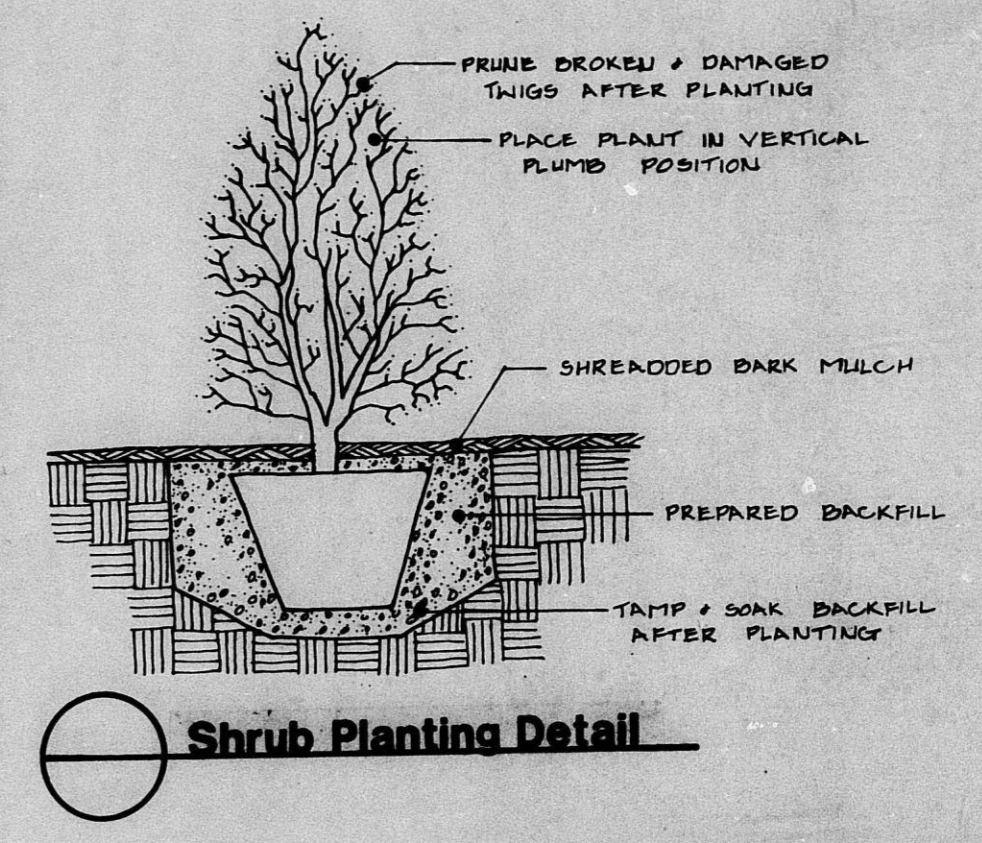
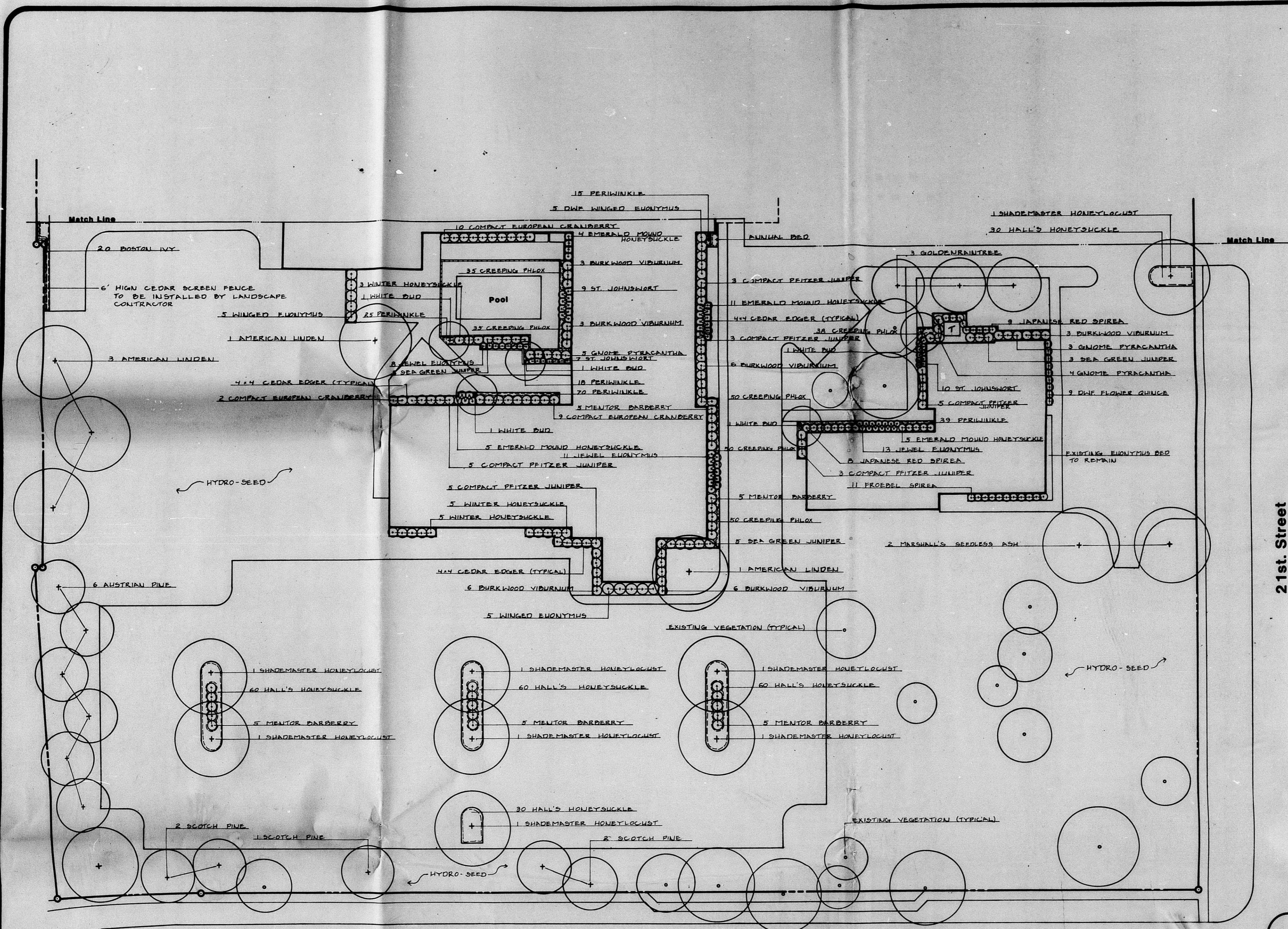
Dr. Karsten's clinic
 3022 WEST 13TH STREET
 WICHITA, KANSAS

01/1/88
 1
 OF 9

site plan

LEGAL DESCRIPTION:
 LOT 1, KARSTEN'S FIRST ADDITION
 TO WICHITA, SEDGWICK COUNTY, KANSAS.
 ZONING: EB OFFICE (BEA RESOLUTION # 1305)
 OCCUPANCY: EB
 CONSTRUCTION TYPE: SN
 SQUARE FOOTAGE: GROUND FLOOR - 2441 SF
 BASEMENT - 1493 SF

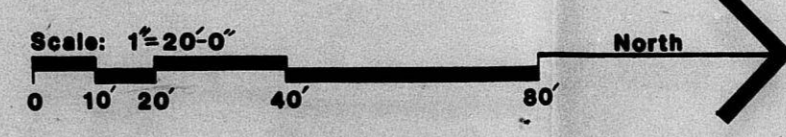
DR 87-21
 M.A.P.D. 1001 of 1



① Approved Landscape Plan April 22, 1986
 128.04.160.K.
[Signature]
 Director of Planning
 Wichita, Kansas
 Superintendent of Central Region
 4-22-86

Wichita Psychiatric Hospital

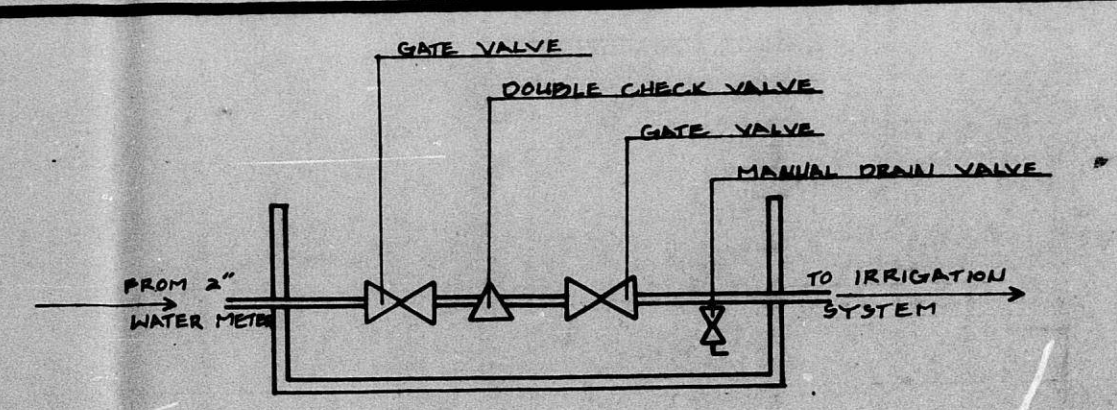
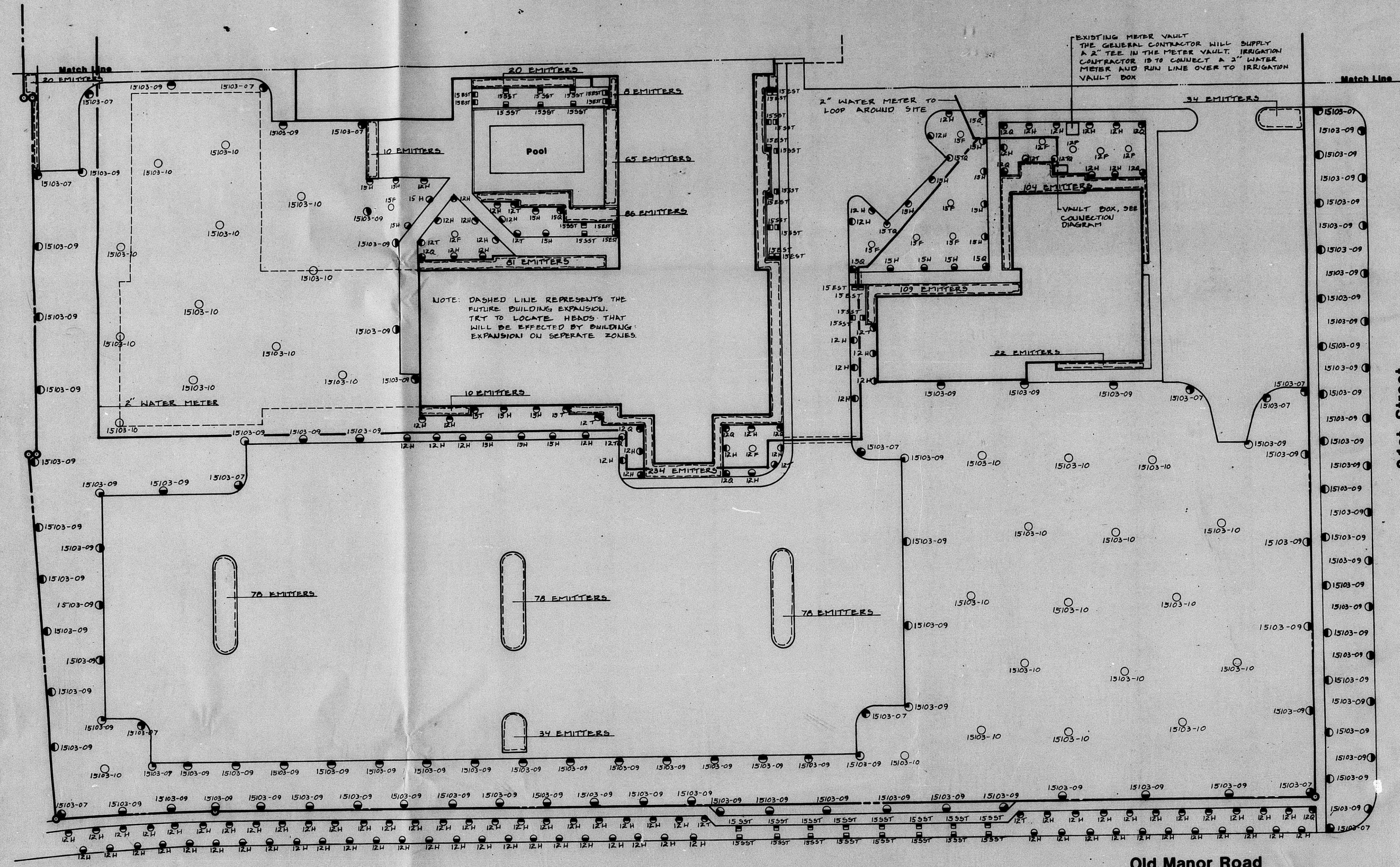
Wichita, Kansas Planting Plan



Site Planning Associates

DR87-21

FILMED FROM THE BEST AVAILABLE COPY



Irrigation Connection Diagram

Notes:

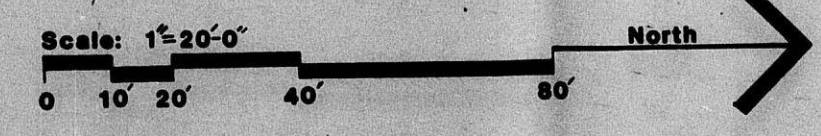
- THE DESIRED WATER COVERAGE OF THE IRRIGATION SYSTEM IS SHOWN ON THE DRAWING. THE CONTRACTOR IS TO COMPLETE THE LAYOUT BY PLACING VALVES, PIPING, CALCULATIONS AND ACCESSORIES, NECESSARY TO MAKE THE SYSTEM OPERABLE IN COMPLIANCE WITH LOCAL CODES AND REGULATIONS.
- THE CONTRACTOR SHALL SUBMIT SHOP DRAWINGS WHICH WILL ILLUSTRATE, TYPE OF HEAD, VALVE LOCATION, PIPING AND ACCESSORIES, SHOW DESIGN PRESSURE, VALVE SIZE, GRP REQUIREMENTS AND PIPE SIZING.
- SCHEDULED PLAN IS A SCHEMATIC DRAWING TO REPRESENT DESIRED WATER COVERAGE. FIELD ADJUSTMENT MAY BE NECESSARY TO AVOID UNFORESEEN OBSTACLES AND SIMPLIFY INSTALLATION.
- STATIC PRESSURE AT SITE SERVICE IS 47 PSI.
- EACH ZONE OF SYSTEM SHALL BE DESIGNED FOR A MAXIMUM OF 50 GRP.
- CONTROLLER IS TO BE CAPABLE OF OPERATING BOTH SPRAY AND DRIP IRRIGATION ZONES.
- DRIP EMITTER VALVES REQUIRE A PRESSURE REGULATOR AND A STRAINER FILTER.
- DRIP EMITTER COUNTS ON PLAN ARE APPROXIMATE. USE THE FOLLOWING GUIDELINES WHEN INSTALLING DRIP SYSTEM.
 - 1 GALLON PER HOUR DRIP EMITTERS TO BE DISTRIBUTED AS FOLLOWS:
 - 1 DRIP EMITTER PER ONE SQ FT OF ANNUAL BED
 - 1 DRIP EMITTER PER TWO 4\"
 - 1 DRIP EMITTER PER ONE GALLON GRASSCOVER
 - 2 DRIP EMITTERS PER SHRUB
 - 4 DRIP EMITTERS PER TREE
- AUTOMATIC DRAIN VALVES ARE TO BE LOCATED AT ENDS OF LINES AND AT THE LOWEST POINTS OF ZONE. PACK GRAVEL AROUND BASE OF EACH VALVE.
- PROVIDE PVC SLEEVES FOR IRRIGATION PIPES AND WIRE THAT CROSSES UNDER WALKS, ROADS AND CONCRETE PADS. COORDINE PIPING WHEREVER POSSIBLE TO SAVE ON SLEEVING. NOTE THE SIZE OF THE SLEEVES ON THE SHOP DRAWING.
- SYSTEM WAS DESIGNED FROM A 1986 RAUBIRD CATALOG. USE 180° SPRAY HEADS BOTH 12 AND 15 SERIES, 12103 WITH ROTOR DASH IN HEAVY SEEDING AREAS.
- BOTH SPRAY HEADS AND IMPACT ROTORS WERE LAYED OUT USING A PSI OF 25.

21st. Street

Wichita Psychiatric Hospital

Wichita, Kansas

Irrigation Plan

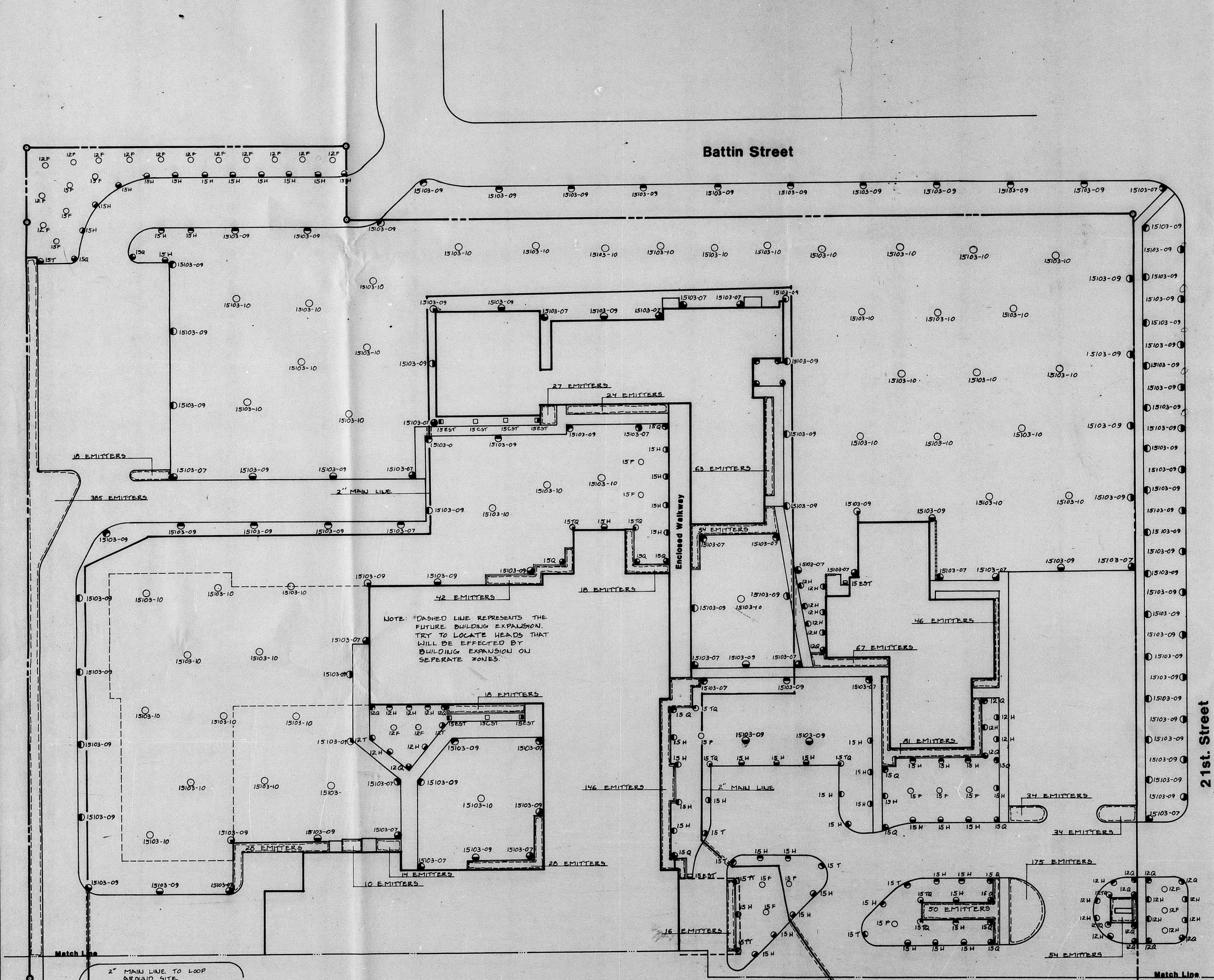


Project No. 0227
 Drawn by P. MEYER
 Date APRIL 18, 1984

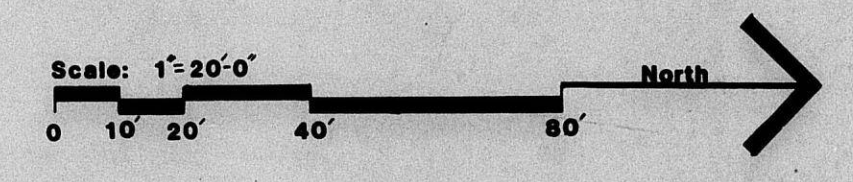
Site Planning Associates

DR 87-21

FILMED FROM THE BEST AVAILABLE COPY



NOTE: DASHED LINE REPRESENTS THE FUTURE BUILDING EXPANSION. TRY TO LOCATE HEADS THAT WILL BE EFFECTED BY BUILDING EXPANSION ON SEPARATE ZONES.



project no. 0227
 drawn by P. MEYER
 date 8-29-12, 1926

Site
 Planning
 Associates

Sheet No.
 4 of 4

DR 87-21

FILMED FROM THE BEST AVAILABLE COPY