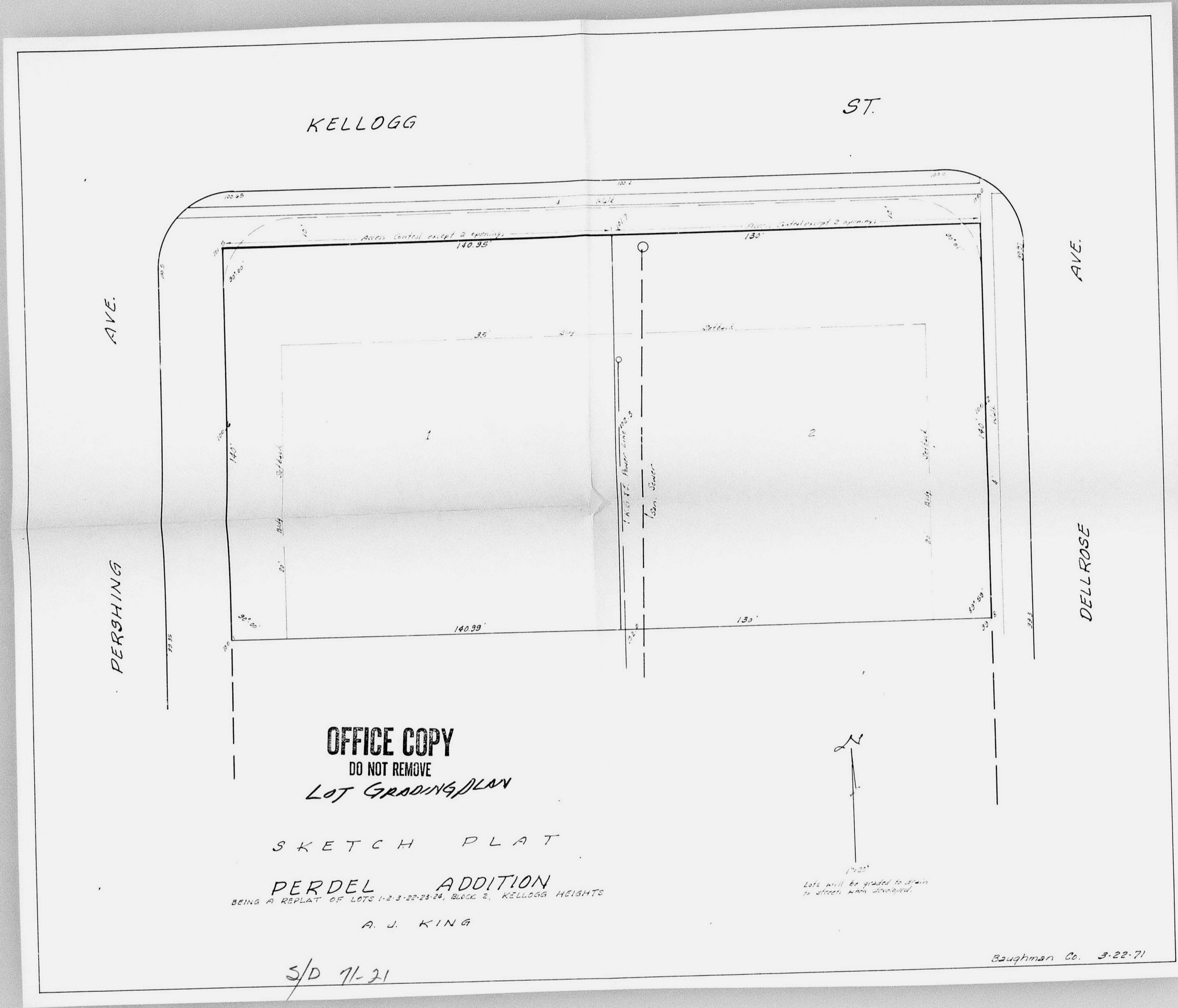


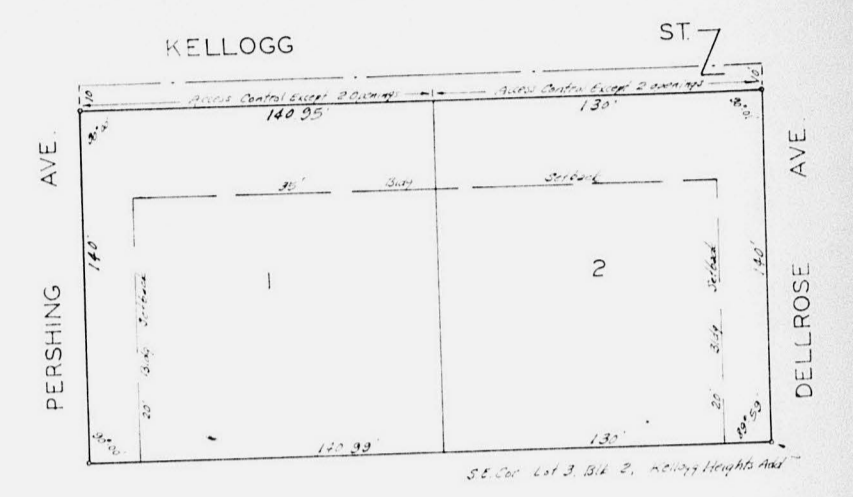
P



3/D 7-21

PERDEL ADDITION

WICHITA, KANSAS.



State of Kansas } s.s. We, Baughman Company, Surveyors in said county and state do hereby certify that we have surveyed and plotted "PERDEL ADDITION" Wichita, Kansas and that the accompanying plat is a true and correct exhibit of the property surveyed described as and being a Replat of Lots 1-2-3 and 22-23-24, Block 2, Kellogg Heights Addition to Wichita, Kansas.

Baughman Co. Surveyor

Know all men by these presents that we, A. J. King and Alma Jane King, his wife have caused the land described in the surveyors certificate to be platted into lots and a street to be known as "PERDEL ADDITION" Wichita, Kansas and that the easements for the construction and maintenance of all public utilities, the street is hereby dedicated to utilities, and for the use of the public, all abutters rights of access to or from Kellogg over and across the north lines of Lots 1 & 2, are hereby granted to the City of Wichita, provided however that Lots 1 & 2 shall each have access to Kellogg at two points as shall be determined by the City Engineer of the City of Wichita, Kansas.

A. J. King

Alma Jane King

We, Wichita Federal Savings and Loan Association, holders of a mortgage on the above described property do hereby consent to the plat of "PERDEL ADDITION" Wichita, Kansas.

Wichita Federal Savings & Loan Assn.

President

Secretary

State of Kansas } s.s. Be it remembered that on this _____ day of _____ 1971, before me a notary public in said county and state came _____ Secretary of Wichita Federal Savings and Loan Association to me known to be the same persons who executed the foregoing instrument of writing and duly acknowledged the execution thereof, whereof I have hereto set my hand and affixed my notarial seal the day and year above written.

Notary Public
My Comm. Exp. _____

State of Kansas } s.s. Be it remembered that on this _____ day of _____ 1971, before me a notary public in said county and state came A. J. King and Alma Jane King to me known to be same persons who executed the foregoing instrument of writing and duly acknowledged the execution thereof, whereof I have hereto set my hand and affixed my notarial seal the day and year above written.

Notary Public
My Comm. Exp. _____

This plat of "PERDEL ADDITION" Wichita, Kansas has been submitted to and approved by the Wichita-Sedgwick County Metropolitan Area Planning Commission, Wichita, Kansas, dated this _____ day of _____ 1971.

Chairman

Secretary

This plat approved and all dedications shown hereon accepted by the Board of Commissioners of the City of Wichita, Kansas, this _____ day of _____ 1971.

Mayor

City Clerk

This plat approved and all dedications shown hereon accepted by the Board of Commissioners, Sedgwick County, Kansas, this _____ day of _____ 1971.

Chairman

Commissioner

Commissioner

County Clerk

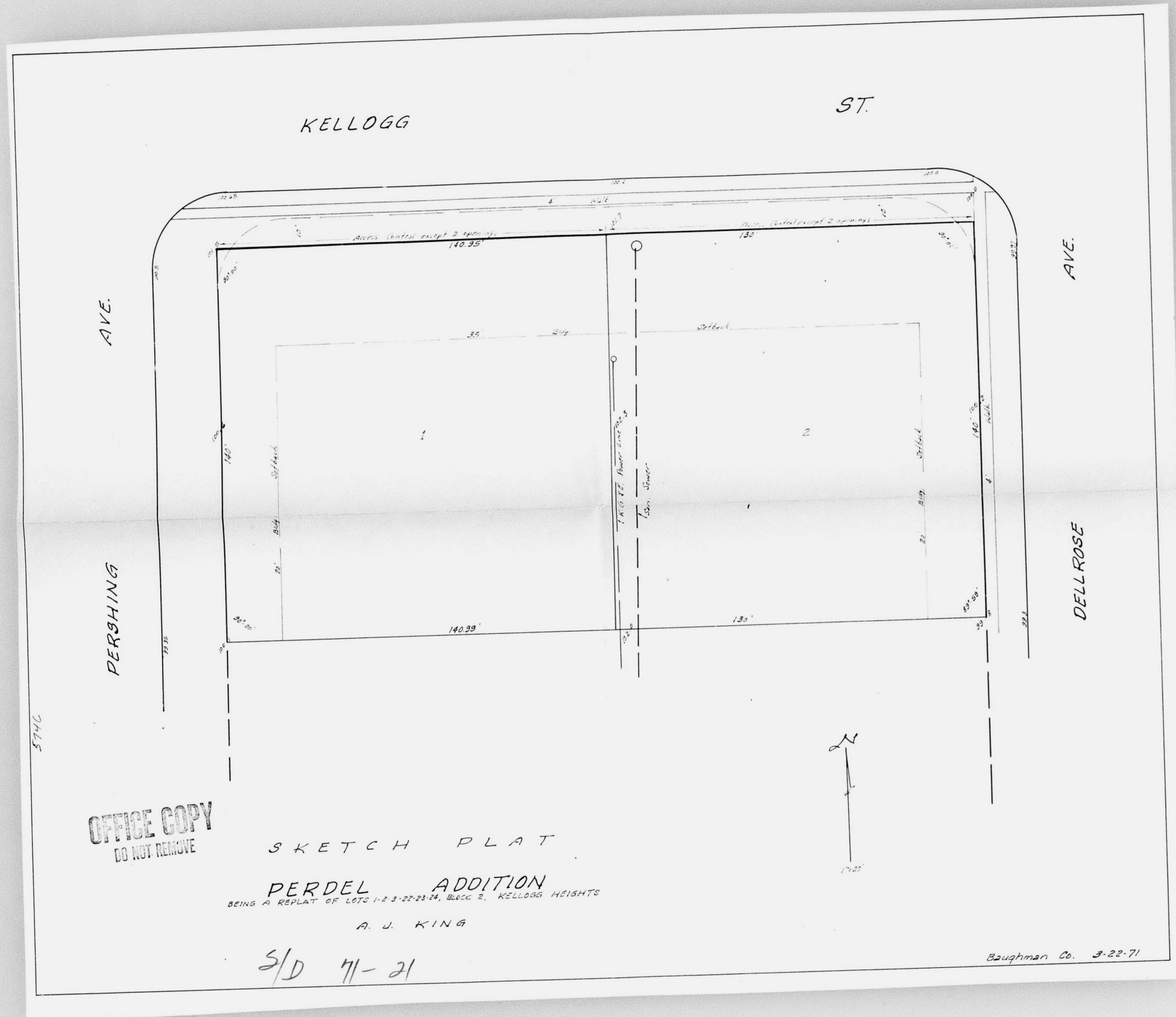
Entered on transfer record this _____ day of _____ 1971.

County Clerk

State of Kansas } s.s. This is to certify that this plat was filed for record in the office of the Register of Deeds this _____ day of _____ 1971, at _____ o'clock _____ M., and is duly recorded.

Register of Deeds

Deputy



COPY FILE
PERDEL ADDITION
 APPROVED FOR RECORDING WICHITA, KANSAS
 RECORDED ON 8-27-71

KELLOGG ST
 PERSHING AVE
 DELROSE AVE

State of Kansas } s.s. Be it remembered that Sedgewick County, Kansas has been submitted to and approved by the Wichita, Sedgewick County Metropolitan Area Planning Commission, Wichita, Kansas, dated this 22nd day of April, 1971, this plat of "PERDEL ADDITION" Wichita, Kansas, has been submitted to and approved by the Board of Commissioners of the City of Wichita, Kansas, this 22nd day of August, 1971.

Know all men by these presents that we, A. J. King and Alma Jane King, his wife, have caused the land described in the surveyors certificate to be divided into lots and a street to be known as "PERDEL ADDITION" Wichita, Kansas, and that the accompanying plat is a true and correct exhibit of the property surveyed described as and being a Replat surveyed designated as and being a Replat Heights Addition to Wichita, Kansas, Baughman Company.

William A. King, Surveyor

Know all men by these presents that we, A. J. King and Alma Jane King, his wife, have caused the land described in the surveyors certificate to be divided into lots and a street to be known as "PERDEL ADDITION" Wichita, Kansas, and that the accompanying plat is a true and correct exhibit of the property surveyed described as and being a Replat surveyed designated as and being a Replat Heights Addition to Wichita, Kansas, Baughman Company.

Alma Jane King, Notary Public

My Comm. Exp. _____

State of Kansas } s.s. This is to certify that Sedgewick County, Kansas has been submitted to and approved by the Board of Commissioners of the City of Wichita, Kansas, this 22nd day of August, 1971, and is duly recorded.

John H. B. Register of Deeds
 Deputy

Wichita Federal Savings and Loan Association, holders of a mortgage on the above described property do hereby consent to the plat of "PERDEL ADDITION" Wichita, Kansas.

Wichita Federal Savings and Loan Association
 President
 Secretary

