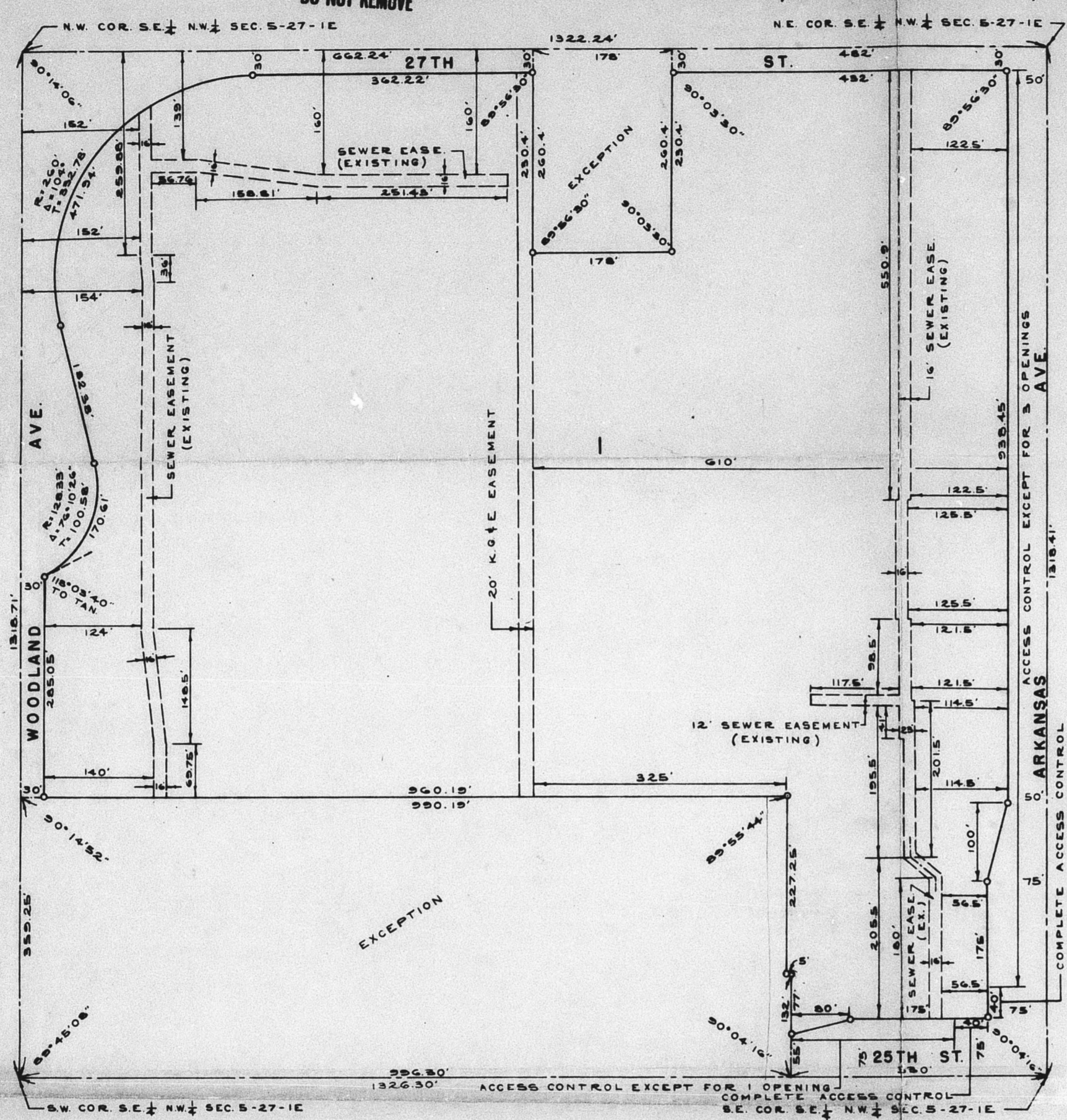


E

S/D 71-66
FINAL PLAT OFFICE COPY
 DO NOT REMOVE

EVERGREEN PARK
 WICHITA, SEDGWICK COUNTY, KANSAS



State of Kansas, County of Sedgwick, SS.
 I, Kenneth O. Taylor, Civil Engineer in said State and County, do hereby certify that I have surveyed and platted "EVERGREEN PARK", Wichita, Sedgwick County, Kansas, and that the accompanying plat is a true and correct exhibit of said survey described as follows: The SE $\frac{1}{4}$ of the NW $\frac{1}{4}$ of Section 5, T27S, R18E of the 6th P.M., Sedgwick County, Kansas, except the following described tracts:
 1. The west 170 feet of the east 600 feet of the north 300 feet of said SE $\frac{1}{4}$ of said NW $\frac{1}{4}$.
 2. Beginning at a point on the south line of said SE $\frac{1}{4}$ of said NW $\frac{1}{4}$, 330 feet west of the SE corner of said SE $\frac{1}{4}$ of said NW $\frac{1}{4}$; thence north parallel to the east line of said SE $\frac{1}{4}$ of said NW $\frac{1}{4}$, 132 feet; thence west parallel to said south line, 3 feet; thence north parallel to said east line, 227.25 feet; thence west parallel to said south line, 990.19 feet to the west line of said SE $\frac{1}{4}$ of said NW $\frac{1}{4}$; thence south on said west line, 359.25 feet to the SW corner of said SE $\frac{1}{4}$ of said NW $\frac{1}{4}$; thence east 996.30 feet to the point of beginning.

Shelton Ave. as platted in Ramsey-Kester Addition to Wichita, Kansas, and the east 30 feet of Shelton Ave. as platted in Ramsey and Fuller Addition to Wichita, Kansas, and the east 30 feet of Shelton Ave. as platted in Woodland Heights Addition to Wichita, Kansas, and Shelton Ave. as platted in Shepherd Addition to Wichita, Kansas, all being vacated by virtue of K.S.A. 1970 Supp. 12-512(b).

Kenneth O. Taylor, Civil Engineer

Know all men by these presents that the Board of Park Commissioners of the City of Wichita, Kansas, by Virgil L. Parker, President, has caused the land described in the Civil Engineer's certificate to be platted into a lot and streets to be known as "EVERGREEN PARK", Wichita, Sedgwick County, Kansas.
 All abutter's rights of access to or from 25th Street, over and across the east 40 feet of the south line of Lot 1, and all abutter's rights of access to or from Arkansas Avenue, over and across the south 40 feet of the east line of Lot 1, are hereby granted to the City of Wichita.

All abutter's rights of access to or from 25th Street, over and across the south line of Lot 1, except the east 40 feet of the south line of said Lot 1, are hereby granted to the City of Wichita, provided, however, that Lot 1 shall have access to 25th Street at one location to be designated by the City Engineer of the City of Wichita, Kansas.

All abutter's rights of access to or from Arkansas Avenue, over and across the east line of said Lot 1, except the south 40 feet of the east line of said Lot 1, are hereby granted to the City of Wichita, provided, however, that Lot 1 shall have access to Arkansas Avenue at 3 locations to be designated by the City Engineer of the City of Wichita, Kansas.

The streets are hereby dedicated to and for the use of the public.

The Board of Park Commissioners of the City of Wichita, Kansas

ATTEST: Virgil L. Parker, President
 Wilma Burke, Clerk

State of Kansas, County of Sedgwick, SS.
 Be it remembered, that on this _____ day of _____, 19____, before me the undersigned, a notary public in and for the County and State aforesaid, came Virgil L. Parker, President of the Board of Park Commissioners of the City of Wichita, Kansas, to me personally known to be the same person who executed the within instrument as President of said Board of Park Commissioners and such person duly acknowledged the execution of same as President, for and on behalf of, and as the act and deed of said Board of Park Commissioners. In testimony whereof, I have hereunto set my hand and affixed my notarial seal the day and year above written.
 _____, Notary Public

My Commission expires: _____
 This plat of "EVERGREEN PARK", Wichita, Sedgwick County, Kansas, has been submitted to and approved by the Wichita-Sedgwick County Metropolitan Area Planning Commission, Wichita, Kansas.

Dated this _____ day of _____, 1972.
 Wichita-Sedgwick County Metropolitan Area Planning Commission
 By: Floyd Souders, Chairman
 Robert A. Lakin, Secretary

This plat approved and all dedications shown hereon, if any, accepted by the Board of City Commissioners of the City of Wichita, Kansas, this _____ day of _____, 19____.

Jack M. Greene, Mayor
 Ralph C. Eberly, City Clerk

This plat approved and all dedications shown hereon, if any, accepted by the Board of County Commissioners of Sedgwick County, Kansas, this _____ day of _____, 19____.

ATTEST: Earl E. Rush, Chairman
 Elmer S. Peters, Commissioner
 Marie Warden, County Clerk
 Tom Scott, Commissioner

S/D 71-66
 approved subject to:
 a. Award to engineer certificate as shown herein.

b. Make satisfactory arrangements on the meter record with the City of Wichita for addition of sewerage collection and for abandonment of their respective facilities. Letter at Planning Clerk furnished to the Planning Dept. from 4-4-72, has been approved and the necessary work has been made.
 State of Kansas, County of Sedgwick, SS.

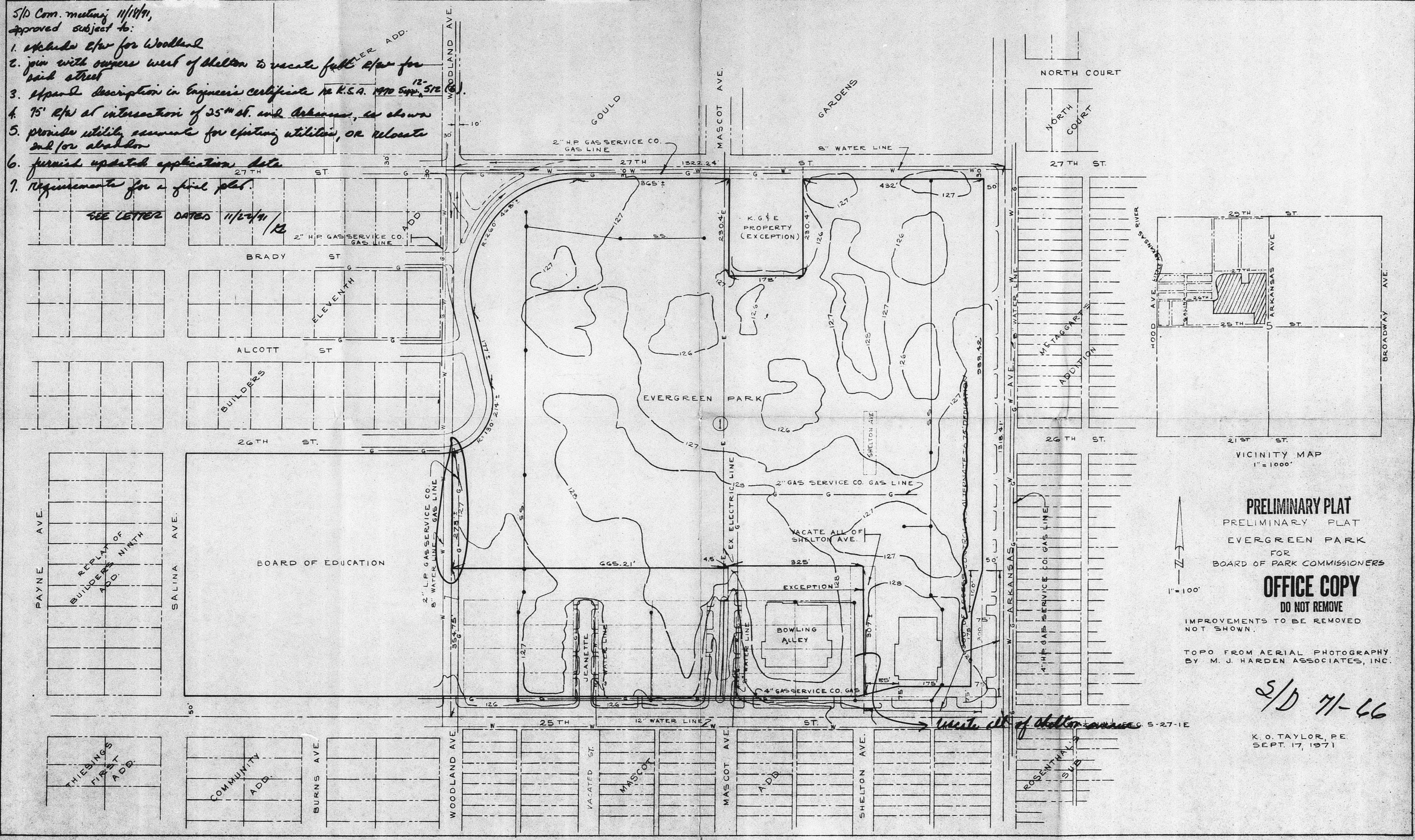
This is to certify that this instrument was filed for record in the Register of Deeds Office, at _____ a.s. - p.m., on the _____ day of _____, 19____.
 _____, Deputy

c. Contact the Engineering Division of the Department of Public Works and make satisfactory arrangements for clearing of the underpass to permit driveway on Arkansas Ave.
 Pearl B. Gilbert, Deputy
 d. Recording of the plat within 30 days after approval by the Board of City Commissioners.
 Note: see letter dated 2-4-72
 CLN

S/D Com. meeting 11/10/41,
approved subject to:

1. include E.P. for Woodland
2. join with owners west of Shelton to vacate full E.P. for
park street
3. Appx. description in Engineer's Certificate No. K.S.O. 1470 Exp. 12-31-41.
4. 75' E.P. at intersection of 25th St. and Arkansas, as shown
5. provide utility accounts for existing utilities, OR relocate
and/or abandon
6. furnish updated application data
7. Requirements for a final plat.

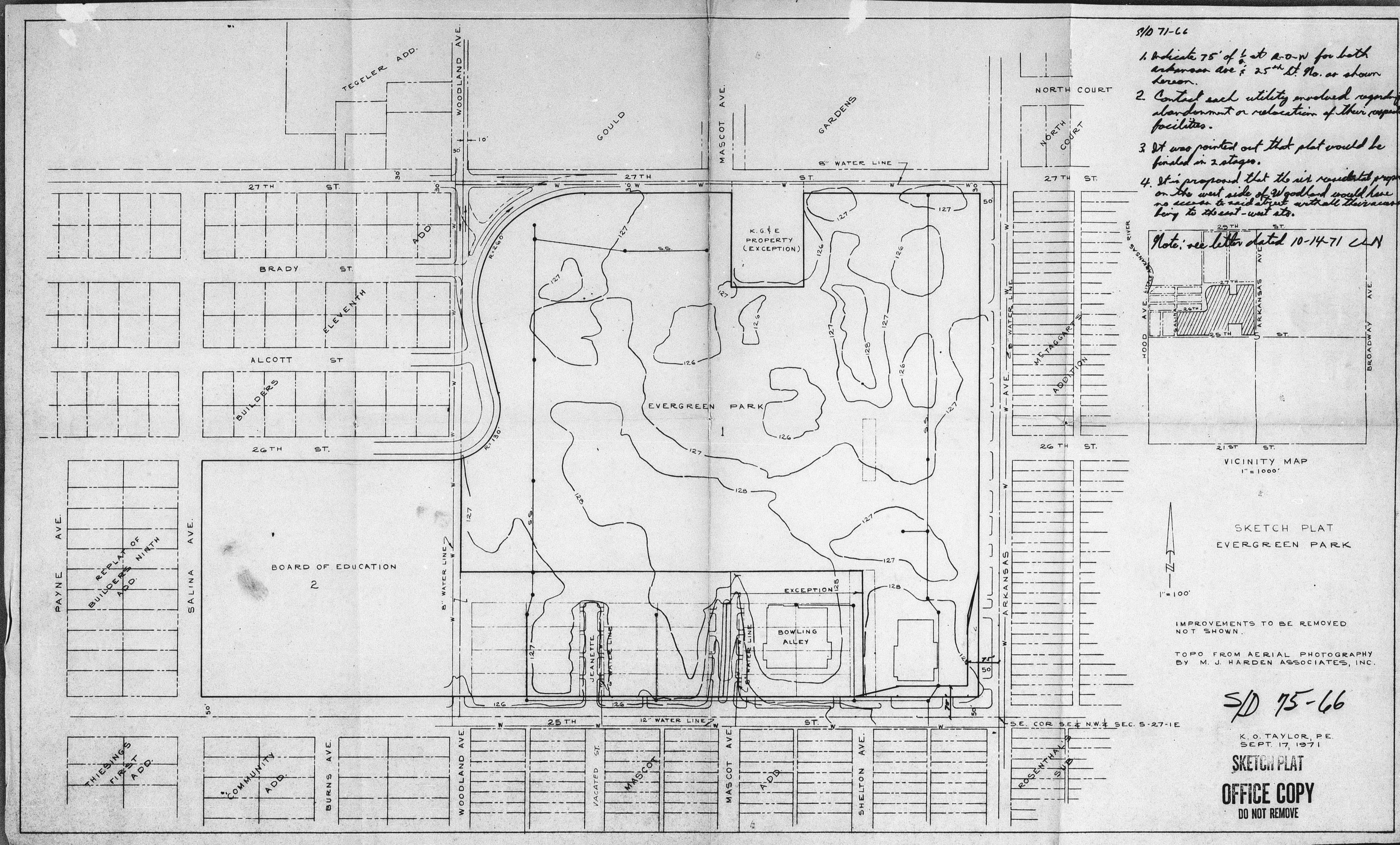
SEE LETTER DATED 11/24/41



PRELIMINARY PLAT
PRELIMINARY PLAT
EVERGREEN PARK
FOR
BOARD OF PARK COMMISSIONERS
OFFICE COPY
DO NOT REMOVE
IMPROVEMENTS TO BE REMOVED
NOT SHOWN.
TOPO FROM AERIAL PHOTOGRAPHY
BY M. J. HARDEN ASSOCIATES, INC.

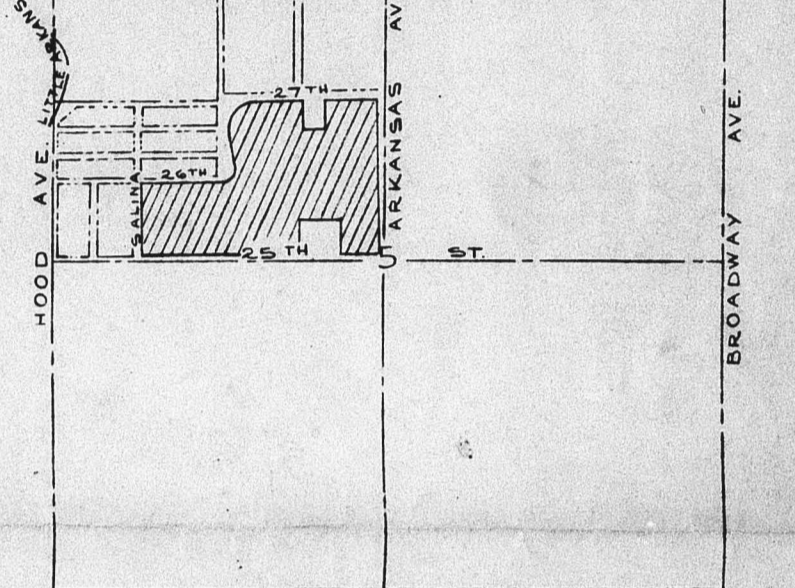
S/D 71-66

K. O. TAYLOR, P.E.
SEPT. 17, 1971



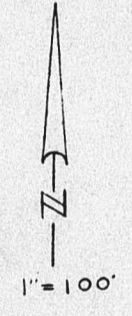
- SD 71-66
1. Indicate 75' of E. at E.O.W. for both Arkansas Ave. & 25th St. No. as shown herein.
 2. Contact each utility involved regarding abandonment or relocation of their respective facilities.
 3. It was pointed out that plat would be filed in 2 stages.
 4. It is proposed that the air residential property on the west side of Woodland would have no access to said street until their access to the east-west sts.

Note: see letter dated 10-14-71 C.M.



VICINITY MAP
1" = 1000'

SKETCH PLAT
EVERGREEN PARK

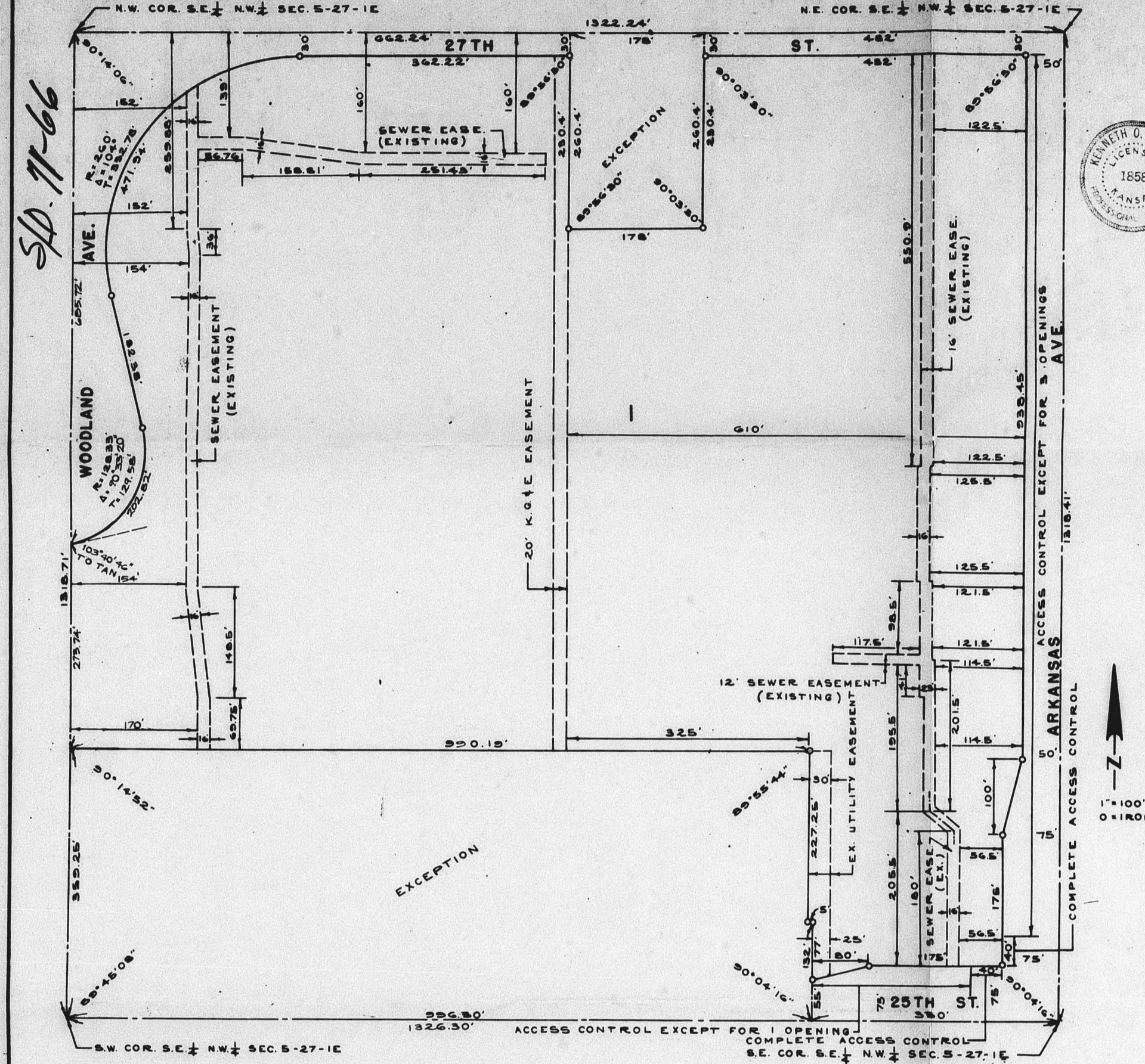


IMPROVEMENTS TO BE REMOVED
NOT SHOWN.
TOPO FROM AERIAL PHOTOGRAPHY
BY M. J. HARDEN ASSOCIATES, INC.

SD 75-66

K. O. TAYLOR, P.E.
SEPT. 17, 1971
SKETCH PLAT
OFFICE COPY
DO NOT REMOVE

COPY
DEAD - FILE
APPROVED FOR RECORDING
RECORDED ON July 21, 1976
EVERGREEN PARK
WICHITA, SEDGWICK COUNTY, KANSAS



State of Kansas, County of Sedgwick, SS.
I, Kenneth O. Taylor, Civil Engineer in said State and County, do hereby certify that I have surveyed and plotted "EVERGREEN PARK", Wichita, Sedgwick County, Kansas, and that the accompanying plat is a true and correct exhibit of said survey described as follows: The SE $\frac{1}{4}$ of the NW $\frac{1}{4}$ of Section 5, T27S, R18E of the 6th P.M., Sedgwick County, Kansas, except the following described tracts:
1. The west 178 feet of the east 600 feet of the north 200.4 feet of said SE $\frac{1}{4}$ of said NW $\frac{1}{4}$;
2. Beginning at a point on the south line of said SE $\frac{1}{4}$ of said NW $\frac{1}{4}$, 330 feet west of the SE corner of said SE $\frac{1}{4}$ of said NW $\frac{1}{4}$; thence north parallel to the east line of said SE $\frac{1}{4}$ of said NW $\frac{1}{4}$, 132 feet; thence west parallel to said south line, 277.25 feet; thence west parallel to said south line, 990.19 feet to the west line of said SE $\frac{1}{4}$ of said NW $\frac{1}{4}$; thence south on said west line, 359.25 feet to the SW corner of said SE $\frac{1}{4}$ of said NW $\frac{1}{4}$; thence east 996.30 feet to the point of beginning.
Shelton Ave. as platted in Ramsey-Kester Addition to Wichita, Kansas, and the east 30 feet of Shelton Ave. as platted in Ramsey and Fuller Addition to Wichita, Kansas, and the east 30 feet of Shelton Ave. as platted in Woodland Heights Addition to Wichita, Kansas, and Shelton Ave. as platted in Shepherd Addition to Wichita, Kansas, all being vacated by virtue of K.S.A. 1970 Supp. 12-512(b).

Kenneth O. Taylor
Kenneth O. Taylor, Civil Engineer
Know all men by these presents that the Board of Park Commissioners of the City of Wichita, Kansas, by Nancy D. Woodard, President, has caused the land described in the Civil Engineer's certificate to be platted into a lot and streets to be known as "EVERGREEN PARK", Wichita, Sedgwick County, Kansas.
All abutter's rights of access to or from 25th Street, over and across the east 40 feet of the south line of Lot 1 and all abutter's rights of access to or from Arkansas Avenue, over and across the south 40 feet of the east line of Lot 1, are hereby granted to the City of Wichita.
All abutter's rights of access to or from 25th Street, over and across the south line of Lot 1, except the east 40 feet of the south line of said Lot 1, are hereby granted to the City of Wichita, provided, however, that Lot 1 shall have access to 25th Street at one location to be designated by the City Engineer of the City of Wichita, Kansas.
All abutter's rights of access to or from Arkansas Avenue, over and across the east line of said Lot 1, except the south 40 feet of the east line of said Lot 1, are hereby granted to the City of Wichita, provided, however, that Lot 1 shall have access to Arkansas Avenue at 3 locations to be designated by the City Engineer of the City of Wichita, Kansas.
The streets are hereby dedicated to and for the use of the public.

The Board of Park Commissioners of the City of Wichita, Kansas
ATTEST: *Nancy D. Woodard*, President
Wilmie Burkle, Clerk
Wilmie Burkle

State of Kansas, County of Sedgwick, SS.
Be it remembered, that on this 21st day of July, 1976, before me the undersigned, a notary public in and for the County and State aforesaid, came Nancy D. Woodard, President of the Board of Park Commissioners of the City of Wichita, Kansas, to me personally known to be the same person who executed the within instrument as President of said Board of Park Commissioners and such person duly acknowledged the execution of same as President, for and on behalf of and as the act and deed of said Board of Park Commissioners. In testimony whereof, I have hereunto set my hand and affixed my notarial seal the day and year above written.
Wanda M. ... Notary Public
My Commission expires: January 1, 1977

This plat of "EVERGREEN PARK", Wichita, Sedgwick County, Kansas, has been submitted to and approved by the Wichita-Sedgwick County Metropolitan Area Planning Commission, Wichita, Kansas.
Dated this 21st day of JUNE, 1976.
Wichita-Sedgwick County Metropolitan Area Planning Commission
By *David Seyoum*, Chairman
Robert A. Lakin, Secretary

This plat approved and all dedications shown hereon, if any, accepted by the Board of City Commissioners of the City of Wichita, Kansas, this 19 day of July, 1976.
James M. ...
Donald C. ...

This plat approved and all dedications shown hereon, if any, accepted by the Board of County Commissioners of Sedgwick County, Kansas, this 19 day of July, 1976.
ATTEST: *John Hale*, Chairman
Earl E. Rush, Commissioner
George Pierce, County Clerk
Tom Scott, Commissioner

Entered on transfer record this _____ day of _____, 19____.

George Pierce, County Clerk
State of Kansas, County of Sedgwick, SS.
This is to certify that this instrument was filed for record in the Register of Deeds Office, at _____ a.s. - p.m., on the _____ day of _____, 19____.

Bette F. McCort, Register of Deeds

Pat Kettler, Deputy