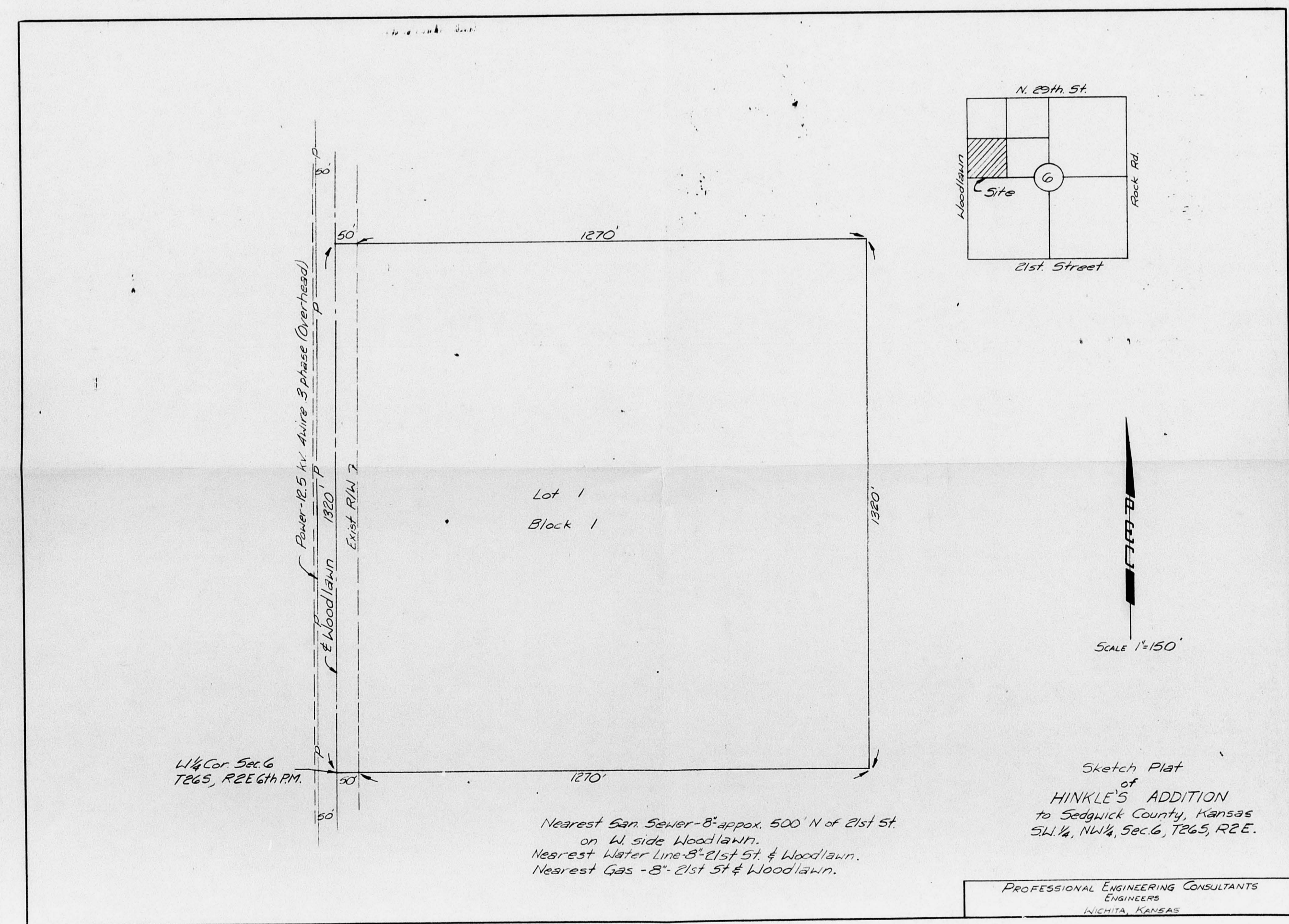
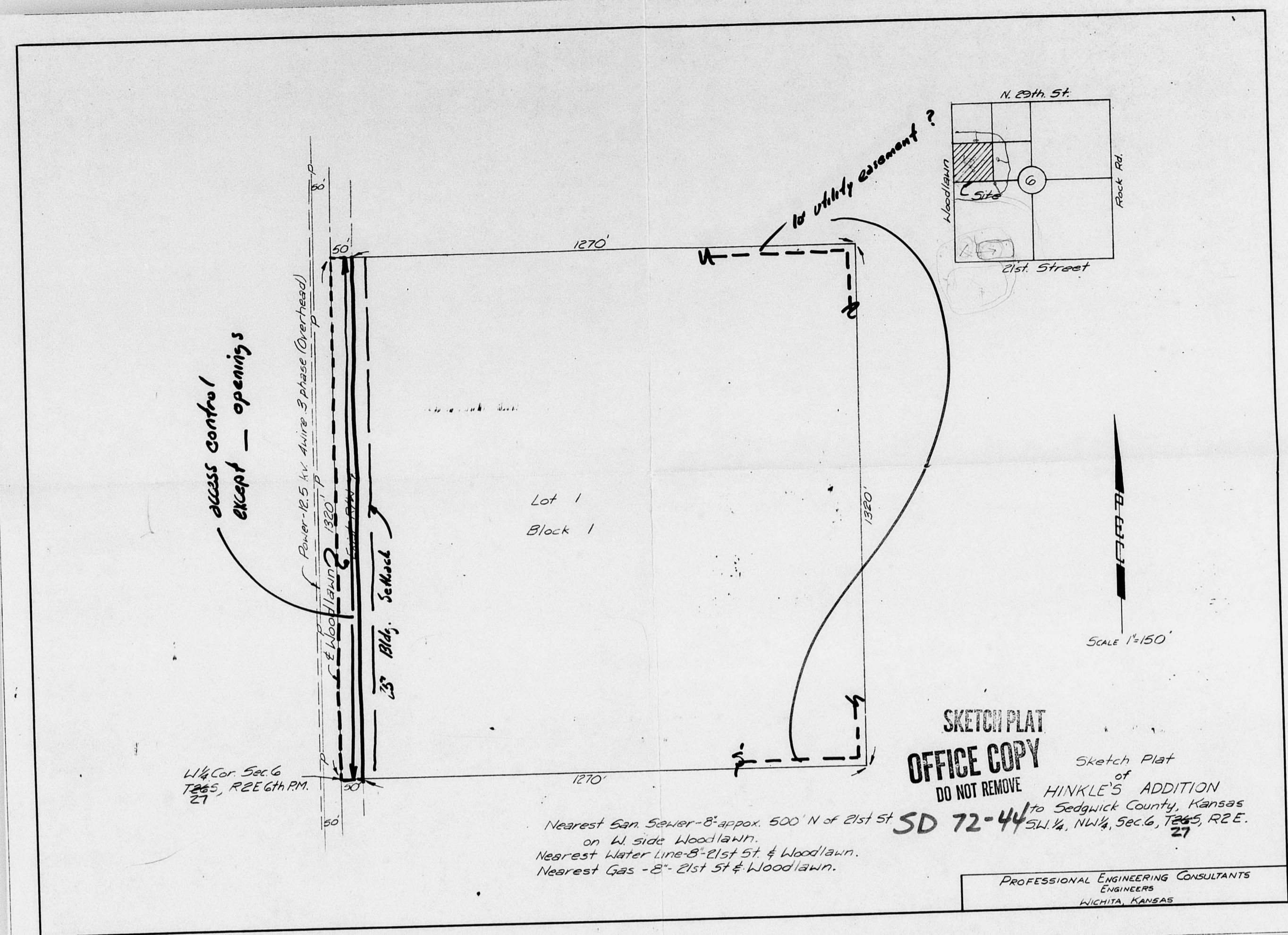


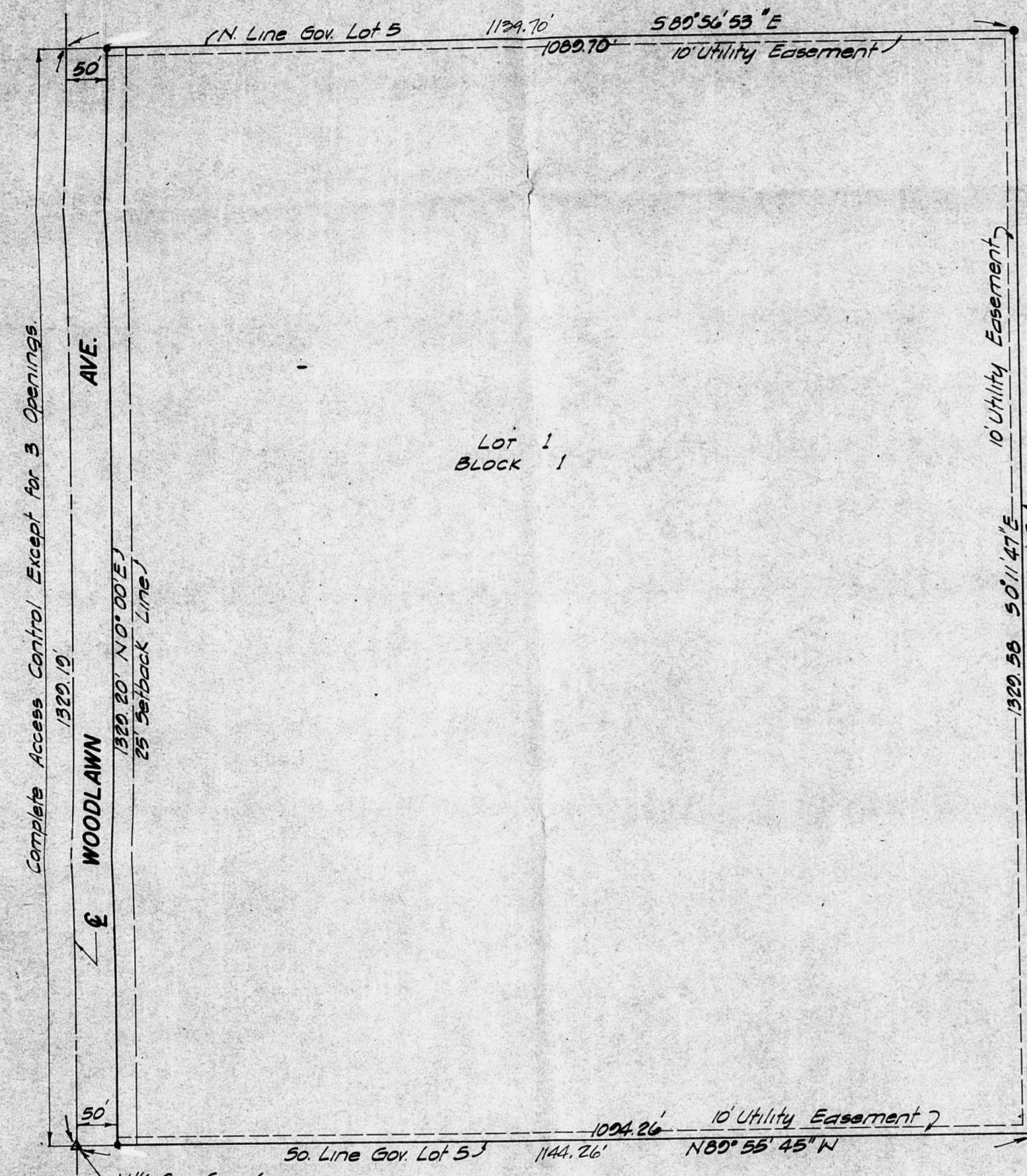
H





**HINKLE'S ADDITION**  
 SEDGWICK COUNTY, KANSAS

REVISED COPY  
 FINAL PLAT  
 OFFICE COPY  
 DO NOT REMOVE  
 50 72-44



STATE OF KANSAS SS  
 COUNTY OF SEDGWICK  
 I, CHARLES J. FREUND, A LICENSED PROFESSIONAL ENGINEER IN AFORESAID COUNTY AND STATE, DO HEREBY CERTIFY THAT I HAVE CAUSED TO BE SURVEYED AND PLATTED "HINKLE'S ADDITION" SEDGWICK COUNTY, KANSAS, INTO A LOT, A BLOCK AND A STREET, THE SAME BEING GOVERNMENT LOT 5 IN SECTION 6, TOWNSHIP 27 SOUTH RANGE 7 EAST OF THE 5TH P.M. AND MORE PARTICULARLY DESCRIBED AS: BEGINNING AT THE N 1/4 CORNER OF SAID SECTION 6, THENCE BEARING N 0° 00' E ALONG THE WEST LINE OF SAID SECTION 6, A DISTANCE OF 1329.19 FEET, THENCE BEARING S 89° 58' 53\"/>

THIS PLAT OF HINKLE'S ADDITION, SEDGWICK COUNTY, KANSAS, HAS BEEN SUBMITTED TO AND APPROVED BY THE WICHITA-SEDGWICK COUNTY METROPOLITAN AREA PLANNING COMMISSION, WICHITA, KANSAS, DATED THIS \_\_\_\_\_ DAY OF \_\_\_\_\_ 1972.

ALVIN J. HENNESSY CHAIRMAN  
 \_\_\_\_\_ SECRETARY

THIS PLAT APPROVED AND ALL DEDICATIONS SHOWN HEREON ARE ACCEPTED BY THE CITY COMMISSION OF THE CITY OF WICHITA, KANSAS, THIS \_\_\_\_\_ DAY OF \_\_\_\_\_ 1972.

GLEN J. SHANAHAN MAYOR  
 RALPH C. EBERLY CITY CLERK

THIS PLAT APPROVED AND ALL DEDICATIONS SHOWN HEREON ARE ACCEPTED BY THE BOARD OF COUNTY COMMISSIONERS OF SEDGWICK COUNTY, KANSAS, THIS \_\_\_\_\_ DAY OF \_\_\_\_\_ 1972.

EARL E. RUSH CHAIRMAN  
 ELMER S. PETERS COMMISSIONER  
 TOM SCOTT COMMISSIONER

KNOW ALL MEN BY THESE PRESENTS, THAT I, THE UNDERSIGNED TRUSTEE OF THE LAND AS ABOVE SET FORTH IN THE ENGINEER'S CERTIFICATE, HAVE CAUSED THE LAND TO BE SURVEYED AND PLATTED INTO A BLOCK, A LOT, AND A STREET, THE SAME TO BE KNOWN AS HINKLE'S ADDITION, SEDGWICK COUNTY, KANSAS. EASEMENTS AS INDICATED FOR THE CONSTRUCTION AND MAINTENANCE OF PUBLIC UTILITIES ARE HEREBY GRANTED. THE STREET IS HEREBY DEDICATED TO AND FOR THE USE OF THE PUBLIC. ALL ADJUTERS RIGHTS OF ACCESS TO AND FROM WOODLAWN AVENUE OVER AND ACROSS THE WEST LINE OF LOT 1, BLOCK 1, ARE HEREBY GRANTED TO THE APPROPRIATE GOVERNING BODY PROVIDED HOWEVER THAT LOT 1, BLOCK 1, SHALL HAVE ACCESS TO WOODLAWN AVENUE AT THREE LOCATIONS TO BE DESIGNATED BY THE APPROPRIATE GOVERNING BODY.

JACK B. HINKLE TRUSTEE OF THE EVA J. HINKLE TRUST

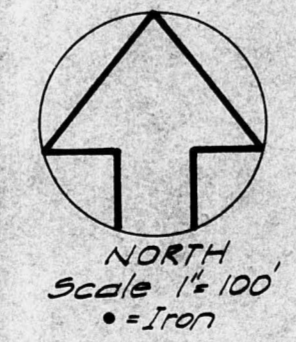
STATE OF KANSAS SS  
 COUNTY OF SEDGWICK  
 BE IT REMEMBERED THAT ON THIS \_\_\_\_\_ DAY OF \_\_\_\_\_ 1972, BEFORE ME, A NOTARY PUBLIC IN AND FOR SAID COUNTY AND STATE CAME JACK B. HINKLE, TRUSTEE OF THE EVA J. HINKLE TRUST, AND TO ME PERSONALLY KNOWN TO BE THE SAME PERSON WHO EXECUTED THE FOREGOING INSTRUMENT OF WRITING AND DULY ACKNOWLEDGED THE EXECUTION OF SAME. IN TESTIMONY WHEREOF I HAVE HEREUNTO SET MY HAND AND AFFIXED MY NOTARIAL SEAL THE DAY AND YEAR ABOVE WRITTEN.

MY COMMISSION EXPIRES \_\_\_\_\_  
 \_\_\_\_\_ NOTARY PUBLIC

ENTERED ON TRANSFER RECORD THIS \_\_\_\_\_ DAY OF \_\_\_\_\_ 1972.  
 \_\_\_\_\_ COUNTY CLERK

THIS IS TO CERTIFY THAT THIS INSTRUMENT WAS FILED FOR RECORD IN THE REGISTER OF DEEDS OFFICE AT \_\_\_\_\_ M., ON THE \_\_\_\_\_ DAY OF \_\_\_\_\_ 1972.  
 JOHN HALE REGISTER OF DEEDS  
 PEARL B. GILBERT DEPUTY

1/4 Cor. Sec. 6, T27S, R2E of 6th. P.M. (Stone)  
 B.M. Chis. X' & 50' headwall conc. curv. approximately 145' East NW Cor. Sec. 6, T27S, R2E El. 175.05 (City Datum)



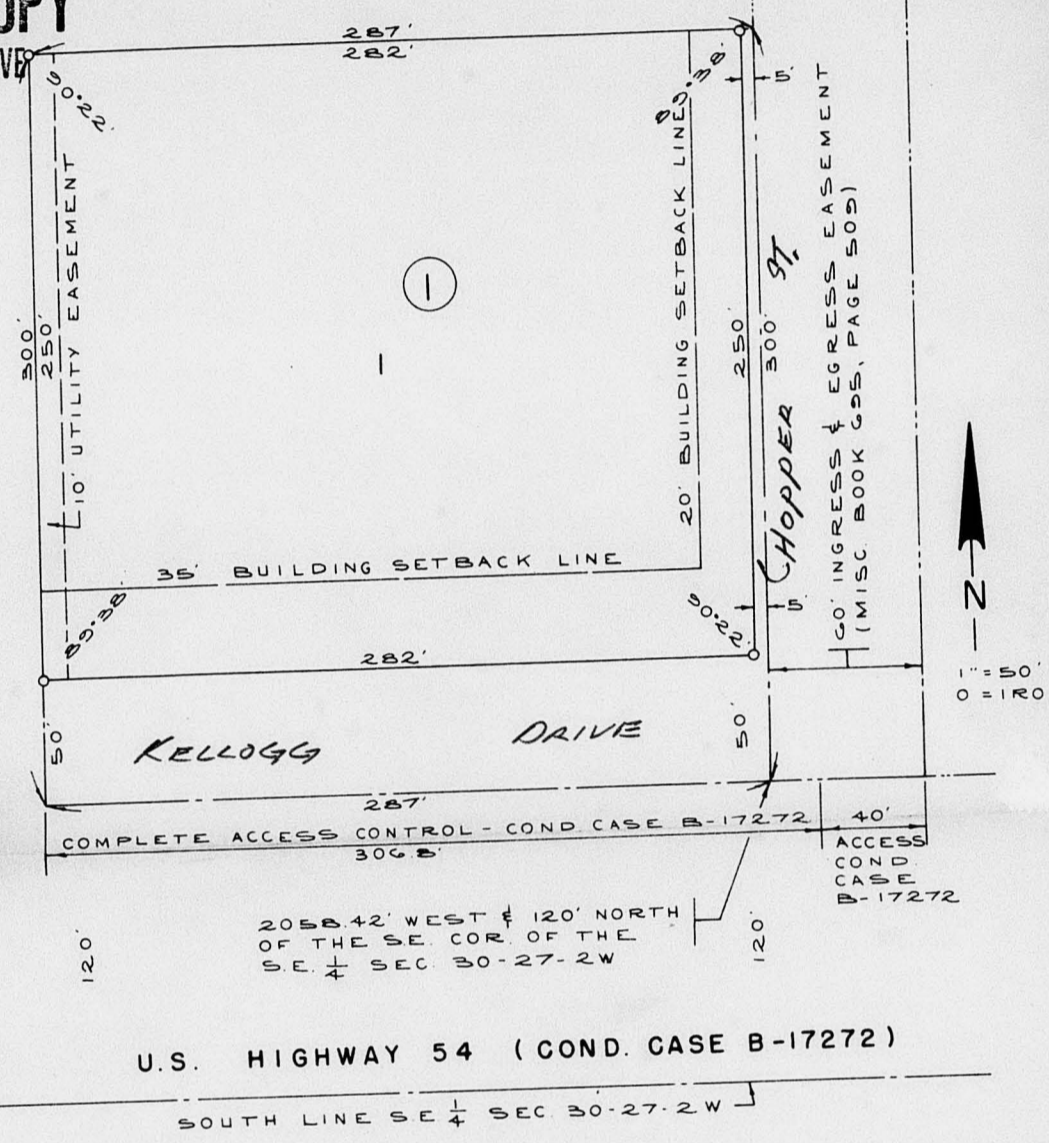
FILMED FROM THE BEST AVAILABLE COPY



FINAL PLAT 5D 71-88  
OFFICE COPY  
DO NOT REMOVE

HOPPER ADDITION  
SEDGWICK COUNTY, KANSAS 9/10 71-88

Approved subject to:



U.S. HIGHWAY 54 (COND. CASE B-17272)

SOUTH LINE SE 1/4 SEC 30-27-2W

State of Kansas, County of Sedgwick, SS.

I, Kenneth O. Taylor, Civil Engineer in said State and County, do hereby certify that I have surveyed and platted "HOPPER ADDITION", Sedgwick County, Kansas and that the accompanying plat is a true and correct exhibit of said survey described as follows: A tract in the SE 1/4 of Section 30, T27S, R2W of the 4th P.M., Sedgwick County, Kansas, described as follows: Beginning at a point on the north right of way line of U. S. Highway 54, as condemned in Case B-17272, thence north parallel to the east line of said SE 1/4, 300 feet; thence east 287 feet to the point of beginning, to said north right of way line; thence east 287 feet to the point of beginning, to said north right of way line; thence east 287 feet to the point of beginning, to said north right of way line; thence east 287 feet to the point of beginning, to said north right of way line.

Kenneth O. Taylor  
Civil Engineer

Know all men by these presents that we, James I. Hopper and Meredith Hopper, husband and wife, have caused the land described in the Civil Engineer's certificate to be platted into a lot, a block and streets to be known as "HOPPER ADDITION", Sedgwick County, Kansas. Utility easements as indicated on the plat are hereby granted for the construction and maintenance of all public utilities. The streets are hereby dedicated to and for the use of the public.

James I. Hopper

Meredith Hopper

State of Kansas, County of Sedgwick, SS.

Be it remembered that on this \_\_\_\_\_ day of \_\_\_\_\_, 19\_\_\_\_, before me, a notary public in and for said County and State, came James I. Hopper and Meredith Hopper, husband and wife, to me personally known to be the same persons who executed the foregoing instrument of writing and duly acknowledged the execution of same. In testimony whereof, I have hereunto set my hand and affixed my notarial seal the day and year above written.

A. Kellogg Drive<sup>71</sup> and Hopper Street<sup>71</sup> shall be labeled as shown hereon.  
My Commission expires: \_\_\_\_\_  
Notary Public

This plat of "HOPPER ADDITION", Sedgwick County, Kansas, has been submitted to and approved by the Wichita-Sedgwick County Metropolitan Area Planning Commission, Wichita, Kansas.

Dated this \_\_\_\_\_ day of \_\_\_\_\_, 19\_\_\_\_,  
B. The applicant hereby certifies that the use of a private water supply and alternate sewage disposal system from the Environment's Health Dept.  
Secretary  
Robert A. Lakin

This plat approved and all dedications shown hereon accepted by the Board of County Commissioners of Sedgwick County, Kansas, this \_\_\_\_\_ day of \_\_\_\_\_, 19\_\_\_\_.

C. Recording in 30 days of 9/10/88  
Chairman  
Elmer S. Peters  
Commissioner  
Tom Scott  
Commissioner

AFFEST: \_\_\_\_\_  
County Clerk  
Marie Warden  
Entered on transfer record this \_\_\_\_\_ day of \_\_\_\_\_, 19\_\_\_\_.  
Marie Warden  
County Clerk

State of Kansas, County of Sedgwick, SS.

This is to certify that this instrument was filed for record in the Register of Deeds Office, at \_\_\_\_\_ o'clock \_\_\_\_\_ m., on the \_\_\_\_\_ day of \_\_\_\_\_, 19\_\_\_\_.

Register of Deeds

John Hale

Deputy  
Pearl B. Gilbert

