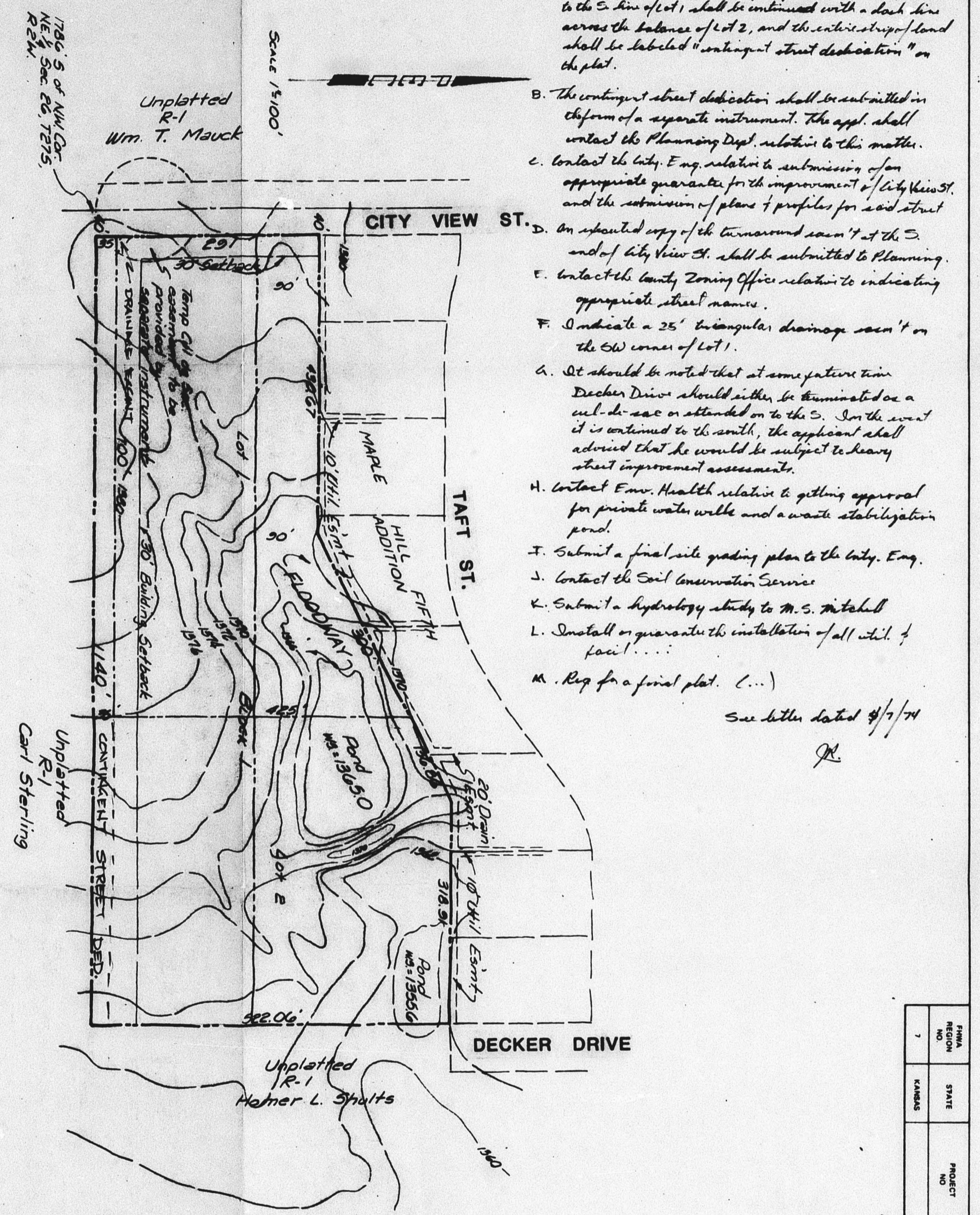
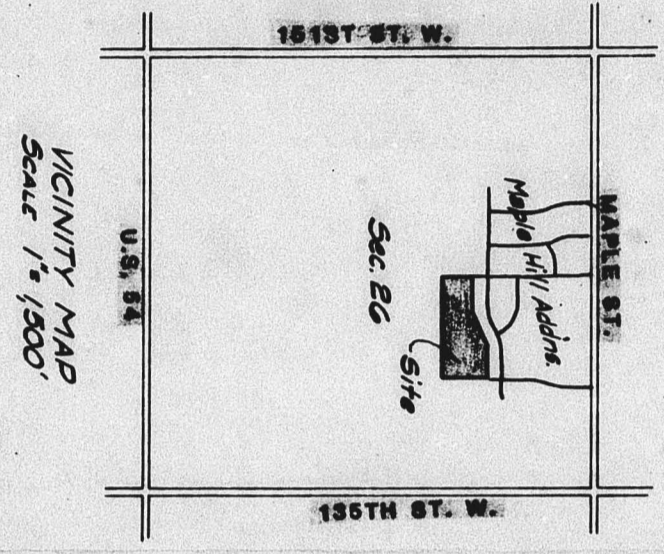


OFFICE COPY
DO NOT REMOVE
SD 74-49
SKETCH PLAT

SKETCH PLAT
O'DELL-WHITE ADDITION
CLINTON O'DELL - JOLLY WHITE

TOPO - KUCERA & ASSOC. 1948
GROUND CONTROL - C.M. JEFFRIES

Baughman Co. 4-2-74



- 2/10 7140 Approved subject to:
- The 25' wide portion of lot 2 for a future street adjacent to the 25' line of lot 1 shall be continued with a dash line across the balance of lot 2, and the entire strip/land shall be labeled "contingent street dedication" on the plat.
 - The contingent street dedication shall be submitted in the form of a separate instrument. The appl. shall contact the Planning Dept. relative to this matter.
 - Contact the City Eng. relative to submission of an appropriate guarantee for the improvement of City View St. and the submission of plans & profiles for said street.
 - An as-built copy of the topographic map of the 25' end of City View St. shall be submitted to Planning.
 - Contact the City Zoning Officer relative to indicating appropriate street names.
 - Indicate a 25' triangular drainage easement on the SW corner of lot 1.
 - It should be noted that at some future time Decker Drive should either be terminated or a cul-de-sac or extended on to the E. In the event it is extended to the south, the applicant shall advise that he would be subject to heavy street improvement assessment.
 - Contact Env. Health relative to getting approval for private water well and a waste stabilization pond.
 - Submit a final site grading plan to the City Eng.
 - Contact the Soil Conservation Service.
 - Submit a hydrology study to M. S. Mitchell.
 - Install or guarantee the installation of all utility facilities.
 - Req. for a final plat. (...)
- See letter dated 8/1/74
RL

Owners -
Subdividers
Engineer

Jolly White & Clinton Obell
3311 Fortner
Mch'ns, 589-4468

P.C.G. PA.
1440 East English
Mch'ns, KS.
Phone 602-26291

Topo Survey by Kansas Assoc. 1968

PRELIMINARY PLAT OF
**O'DELL-WHITE
ADDITION**

PROFESSIONAL ENGINEERING CONSULTANTS, P.A.
INCORPORATED
WICHITA, KANSAS

Drawn by G.L.K.
Checked by E.L.O.
Date 7/20/74

OFFICE COPY
DO NOT REMOVE
SD 74-49
PRELIMINARY PLAT

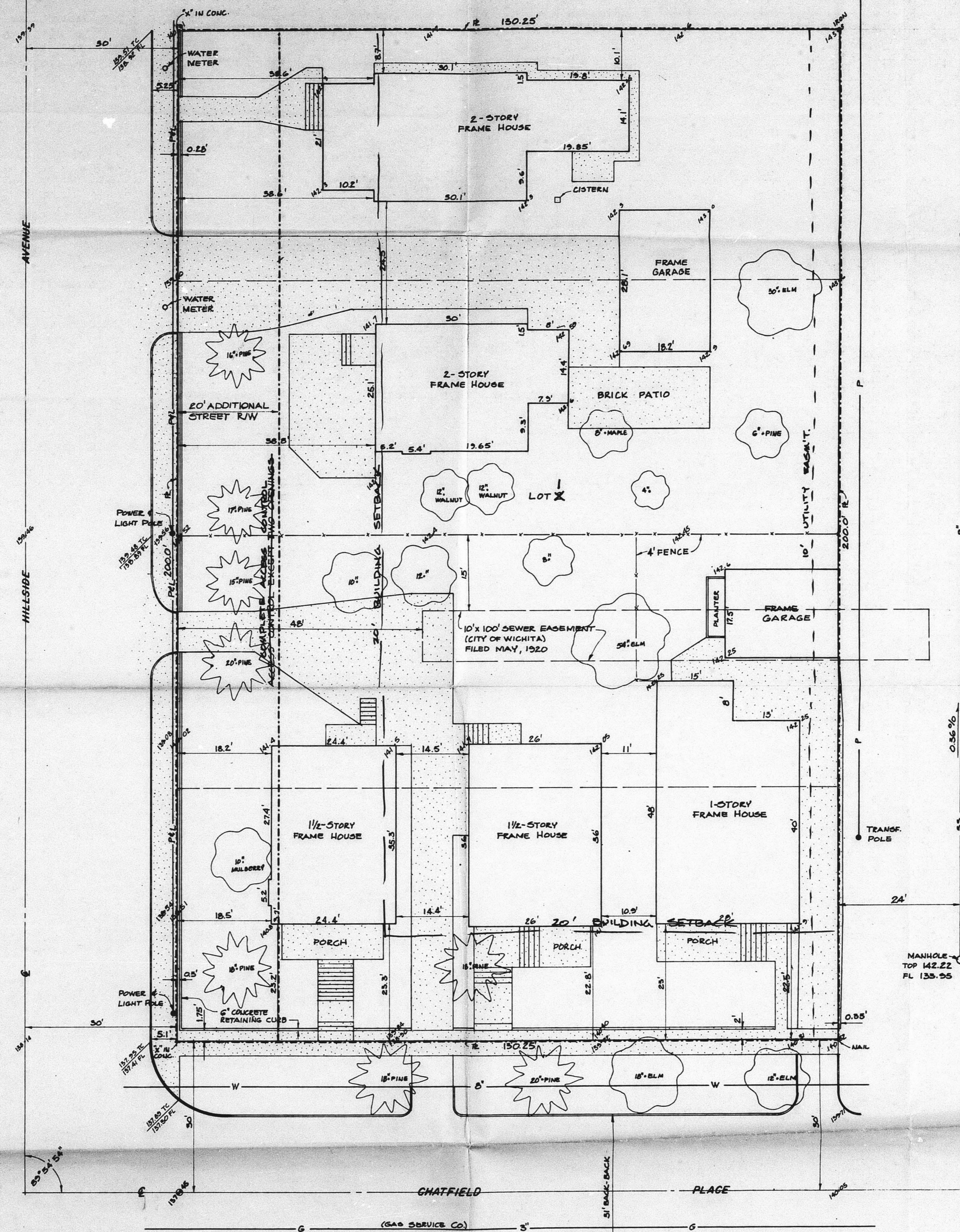
NO.	DATE	PROJECT	REVISION	BY	DATE
1					

90 75-46 Approved subject to:

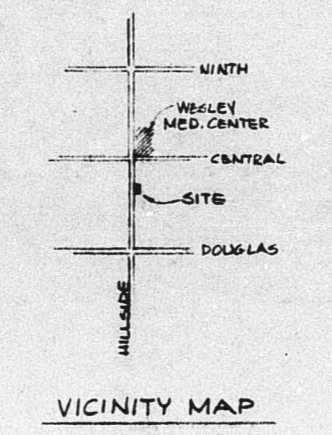
- Approval of this plat is subject to approval of the associated zone case 2-1710 from "88" & "88".
- Since subject plat is one lot plat, the number of the lot shall be changed to Lot 1.
- Complete access to street shall be labeled adjacent to the E. side of Hillside.
- 20' utility easement shall be labeled adjacent to the E. side of subject plat.
- A site development plan shall be submitted to the F.O. Dept. prior to the issuance of any plat, permits.
- Contact the Engineering Dept. relative to surveying subject property with same owner.
- Submit a lot grading plan to W.S. Mitchell.
- Make satisfactory arrangements with the Eng. Dept. relative to closing the existing curb cut on Hillside.

- That portion of the existing bldg. extending into the street R.O.W. on Hillside shall be removed prior to recording of this plat.
- A 20' utility easement shall be indicated from Hillside and Chatfield.
- The applicant shall be advised that existing bldgs. extending into the roadway area will become nonconforming upon recording of this plat.
- Coordinate the reconstruction of sidewalks on the E. side of Hillside and the N. side of Chatfield.
- Coordinate the installation of all utility facilities.
- Agreement to be a final plat (...)

See letter dated 6/13/75



BENCH MARK
Top of N.E. bolt on "Conoco" sign at S.W. cor. Hillside & Central, Elevation 144.15



N
1" = 10'

PRELIMINARY PLAT OF
ORTHOPEDIC SPECIALTIES ADDITION
TO WICHITA, SEDGWICK COUNTY, KANSAS
BEING A REPLAT OF LOTS 13, 15, 17, AND 19, BLOCK 2
IN FLORAL'S ADDITION TO WICHITA, KANSAS.
Don C. Moberg, Jr.
MOBERG & ASSOCIATES CONSULTING ENGINEERS
314 BROWN BUILDING WICHITA, KANSAS
75-0062-3D JUNE 9, 1975



OFFICE COPY
DO NOT REMOVE
SD 75-46
PRELIMINARY PLAT