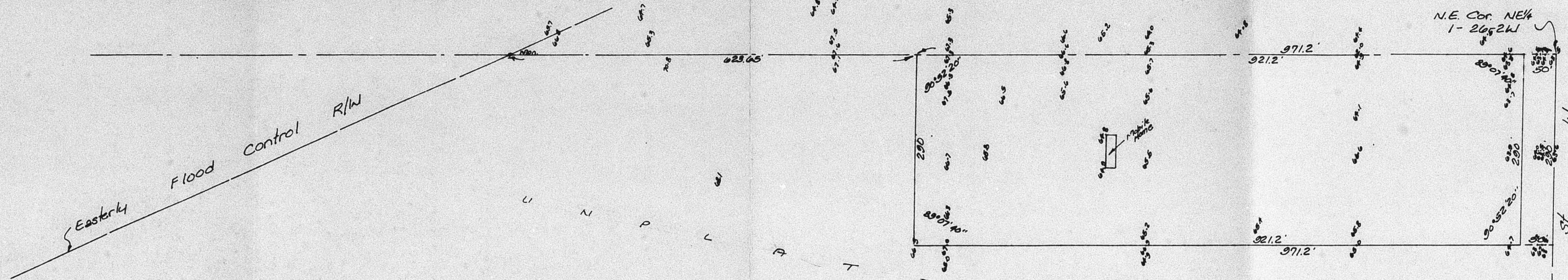
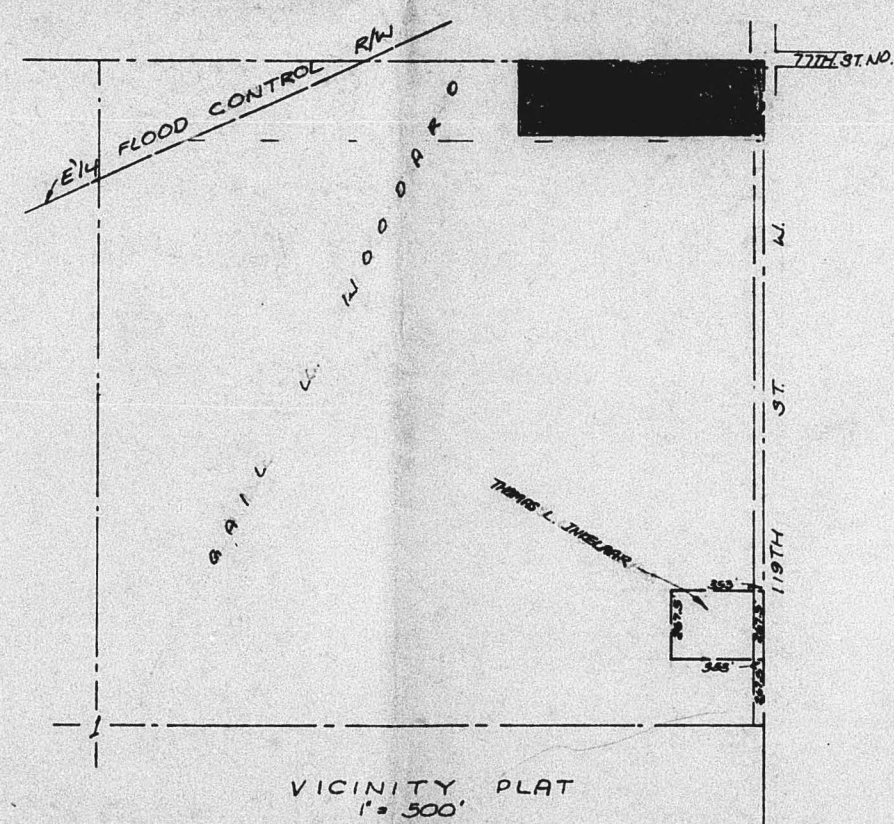
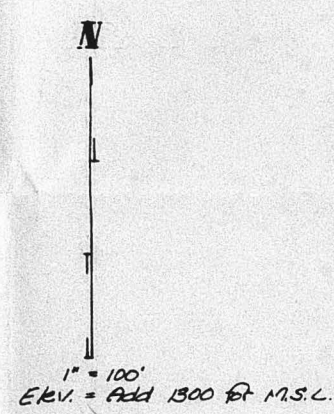


D



BENCH MARK:
 (Cont'd.) Banded east corner of
 east 'subequal' south bridge,
 1/4 mile north of NE Cor Sec. 26, 2W
 Elev. = 1571.04 M.S.C.



SKETCH PLAT
DYSART ADDITION

The north 290 feet of the east 971.2 feet of the NE 1/4
 of Sec. 1, Twp. 26-9, R-2-W, Sedgwick County, Kansas.

BILLY W. DYSART

OFFICE COPY
 DO NOT REMOVE

~~FINAL PLAT~~
 SKETCH PLAT

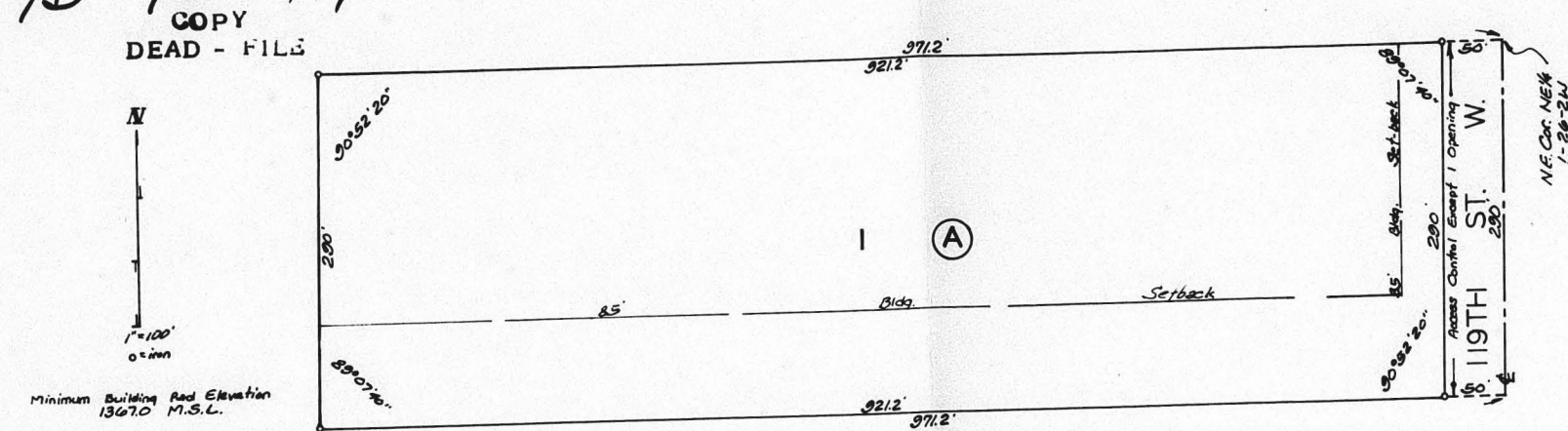
S/D 75-117
 4656

APPROVED FOR RECORDING DYSART ADDITION

RECORDED ON April 21, 1976

SEDGWICK COUNTY KANSAS

S/D 75-117



This plat of "DYSART ADDITION", Sedgwick County, Kansas, has been submitted to and approved by the Wichita-Sedgwick County Metropolitan Area Planning Commission, Wichita, Kansas. Dated this 5th day of February, 1976.

Wichita-Sedgwick County Metropolitan Area Planning Commission

Chairman

Secretary

3/9/76 Date

William L. Kurber Surveyor

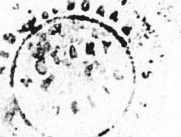


Know all men by these presents that we, Billy W. Dysart and Susan M. Dysart, his wife, have caused the land described in the surveyors certificate to be platted into a Lot, Block and Street to be known as "DYSART ADDITION", Sedgwick County, Kansas. The street is hereby dedicated to and for the use of the public. All abutters rights of access to or from 115TH ST. WEST, over and across the east line of Lot 1 are hereby granted to the appropriate governing body, provided however that Lot 1 shall have access to 115TH ST. WEST at 1 point as shall be determined by the appropriate governing body. No structure shall be constructed below a minimum pad elevation of 1367.0 M.S.L.

Billy W. Dysart Susan M. Dysart

State of Kansas S.S. Be it remembered that on this 3rd day of February, 1976, that before me a notary public in and for the county and state came Billy W. Dysart and Susan M. Dysart, his wife, to me known to be the same persons who executed the foregoing instrument of writing and duly acknowledged the execution of the same. In testimony whereof I have hereunto set my hand and affixed my notarial seal the day and year above written.

Fred J. Drane Notary Public



This plat approved and all dedications shown hereon accepted by the Board of Commissioners, Sedgwick County, Kansas this day of 1976.

Chairman

Commissioner

Commissioner

County Clerk

Entered on transfer record this day of 1976.

County Clerk

State of Kansas S.S. This is to certify that this plat has been filed for record in the office of the Register of Deeds this day of 1976 at o'clock M; and is duly recorded.

Register of Deeds

Deputy

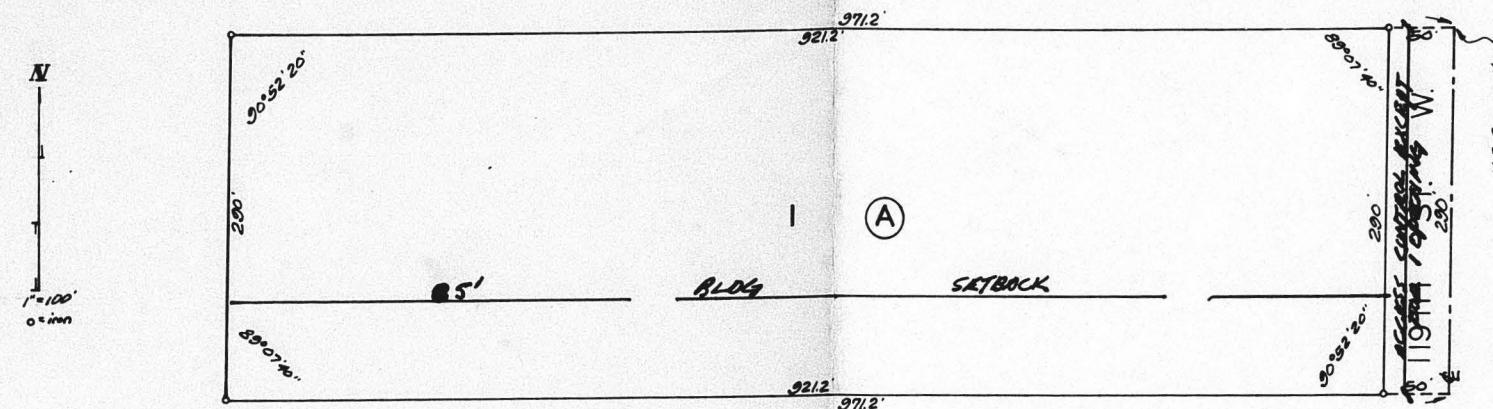
OFFICE COPY DO NOT REMOVE

FINAL PLAT

S/D 75-117

DYSART ADDITION

SEDGWICK COUNTY KANSAS



This plat of "DYSART ADDITION", Sedgwick County, Kansas, has been submitted to and approved by the Wichita-Sedgwick County Metropolitan Area Planning Commission, Wichita, Kansas. Dated this 5th day of February, 1976.

Wichita-Sedgwick County Metropolitan Area Planning Commission

Chairman

Secretary

3/9/76 Date

William L. Kurber Surveyor

Know all men by these presents that we, Billy W. Dysart and Susan M. Dysart, his wife, have caused the land described in the surveyors certificate to be platted into a Lot, Block and Street to be known as "DYSART ADDITION", Sedgwick County, Kansas. The street is hereby dedicated to and for the use of the public.

Billy W. Dysart Susan M. Dysart

This plat approved and all dedications shown hereon accepted by the Board of Commissioners, Sedgwick County, Kansas this day of 1976.

Chairman

Commissioner

Commissioner

County Clerk

Entered on transfer record this day of 1976.

County Clerk

State of Kansas S.S. Be it remembered that on this day of 1976, that before me a notary public in and for the county and state came Billy W. Dysart and Susan M. Dysart, his wife, to me known to be the same persons who executed the foregoing instrument of writing and duly acknowledged the execution of the same. In testimony whereof I have hereunto set my hand and affixed my notarial seal the day and year above written.

Notary Public

State of Kansas S.S. This is to certify that this plat has been filed for record in the office of the Register of Deeds this day of 1976 at o'clock M; and is duly recorded.

Register of Deeds

Deputy