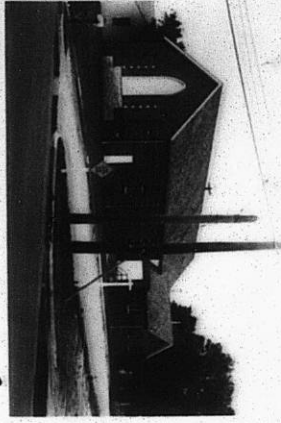
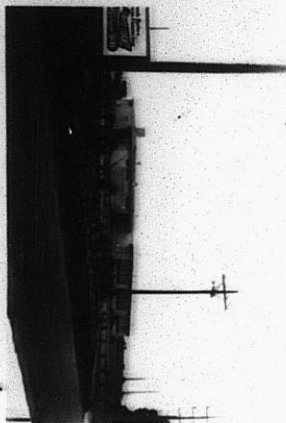


SCZ - 0059

NO. SCZ-0059 R-1 to LC
Desc ES Arkansas bet. 42nd and Longlane
BY Paul E. Matz
DOA BODY ACTION NOTICES
7-16-59 MAPC Denied
7-23-59 BCoC "
CLOSED
file discarded 5-19-82
RESOLUTION NO. _____ PUBLISHED _____
T21-202

39

XFE



SC2-0059

43 ED STREET

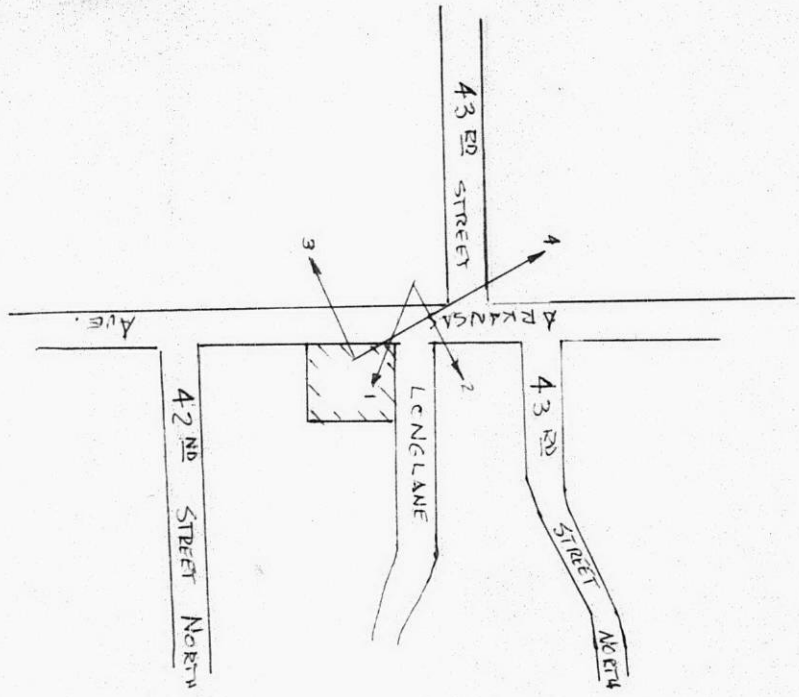
3

4

WBE

WBE

512-0059



512-0059

131

131