

C.A.

SCZ-0035

NO. SCZ-0035 R-1 to AA

Desc SE corner of Central & Ridge Road

---

BY Meadowview Shopping Center, Inc.

	DOA	BODY	ACTION	NOTICES
	3-5-59	MAPC	Defer	
	4-2-59	MAPC	No Action	
✓	4-16-59	MAPC	Approve in part (hold for plat)	
	4-23-59	BCoC	Approve	

CLOSED

*file discarded 2-19-82*

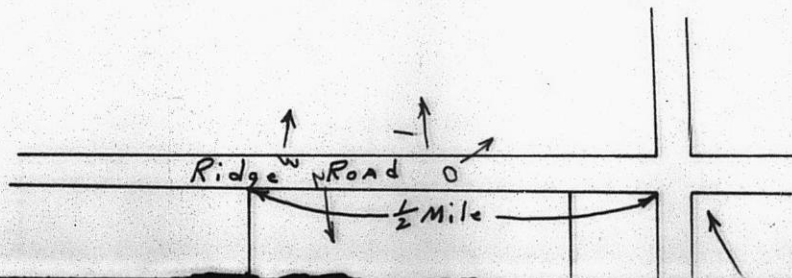
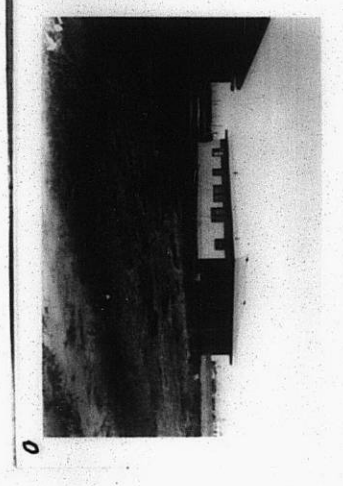
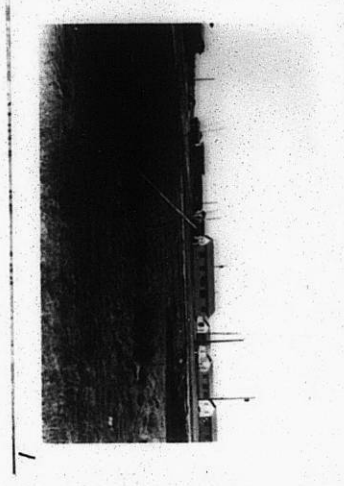
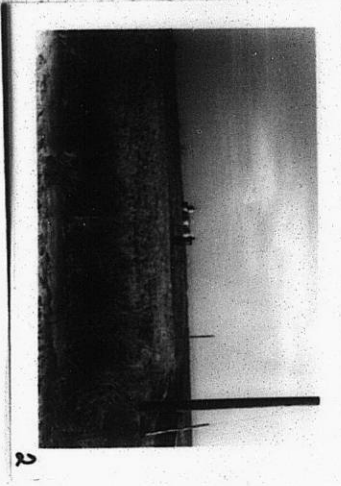
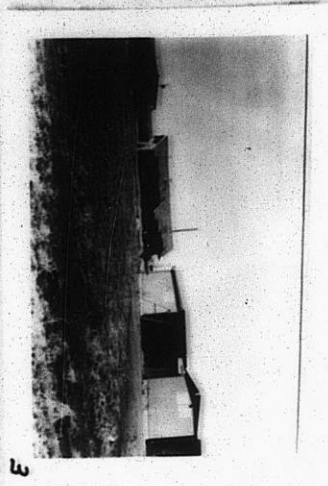
RESOLUTION NO. \_\_\_\_\_ PUBLISHED 7-14-60

T21-202

310

34X

562-0035

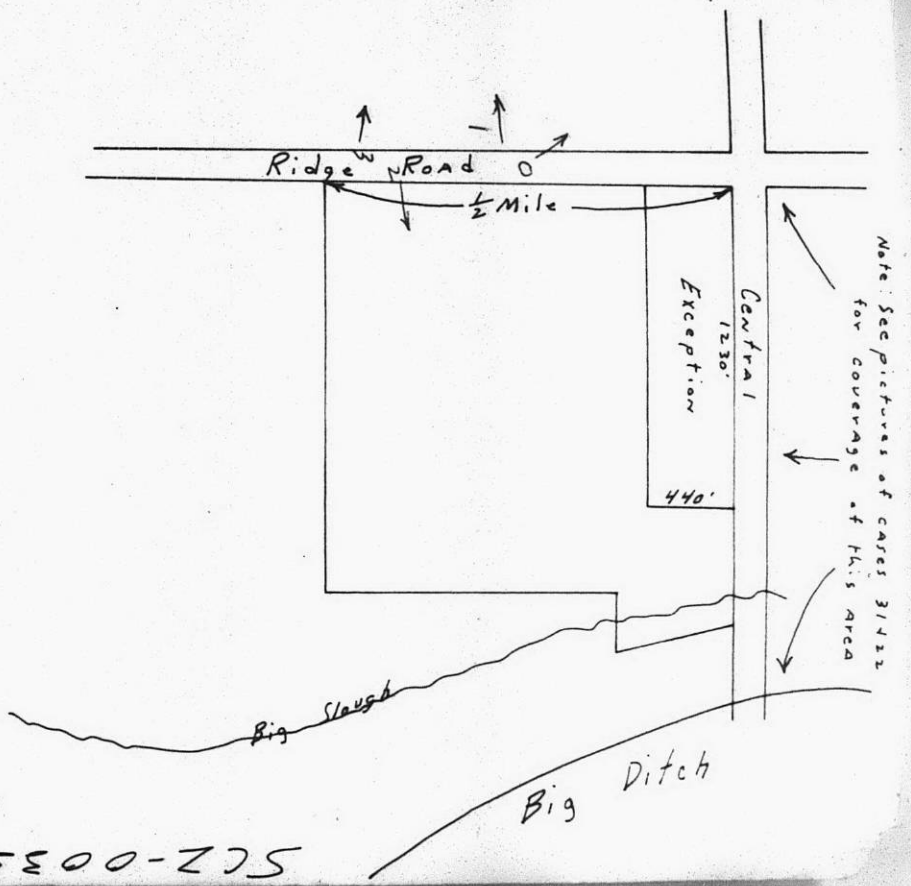


562

562

562

SC2-0035

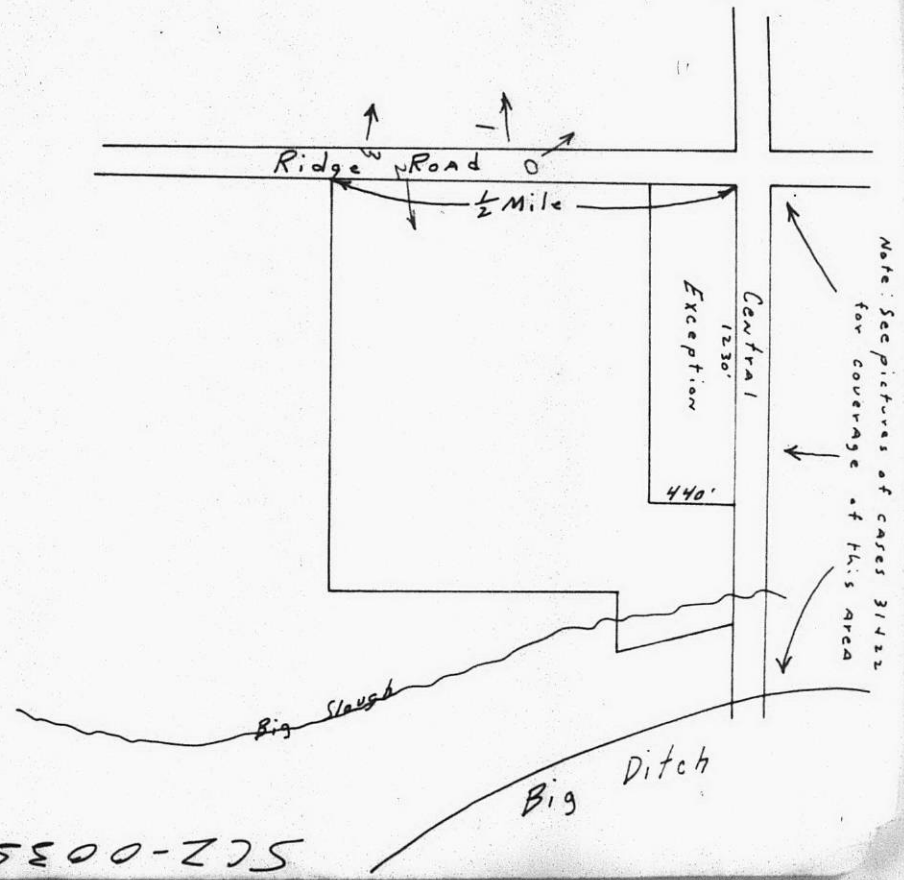


SC2-0035

11E

11E

SC2-0035



Note: See pictures of cases 31422 for coverage of this area

SC2-0035

314

314