

507-0053

NO. SCZ-0053 .R-1 to C

Desc WS Maize RD. bet. Maple & Central

BY Dr. Joseph A. Bogue

DOA	BODY	ACTION	NOTICES
5-7-59	MAPC	Denied for C - app. for LC & CU -	
5-21-59	MAPC	Conditions approved	
5-28-59	BCoC	Approve C zoning	

CLOSED

*file discarded 2-19-82*

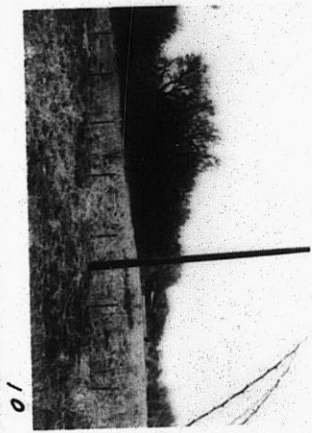
RESOLUTION NO. \_\_\_\_\_ PUBLISHED 7-14-60

T21-202

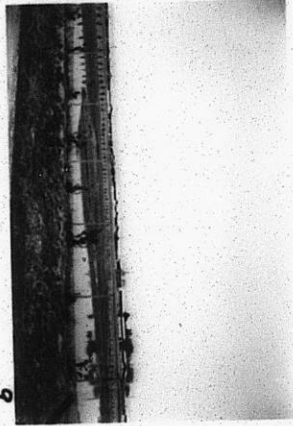
131

132

3C2-0053



10



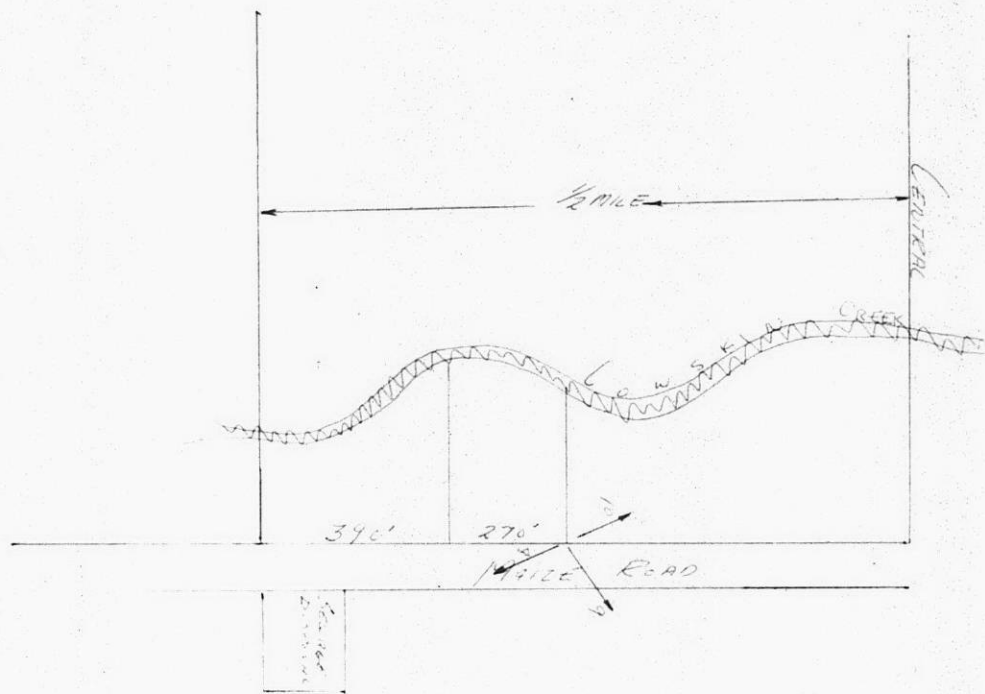
9



8

3C2

1053



511-0053

67E

74E