

507-0056

NO. SCZ-0056 R-1 to LC

Desc SW corner of 53rd & Arkansas

BY B & P Co.

DDA	BODY	ACTION	NOTICES
-----	------	--------	---------

6-18-59	MAPC	Approve	
---------	------	---------	--

6-25-59	BCoC	Approve	
---------	------	---------	--

CLOSED

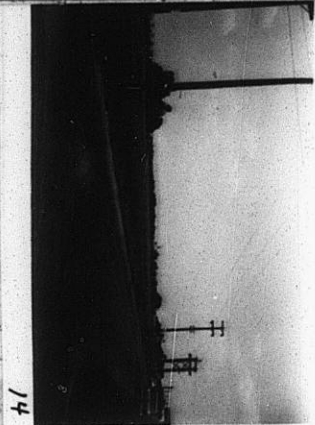
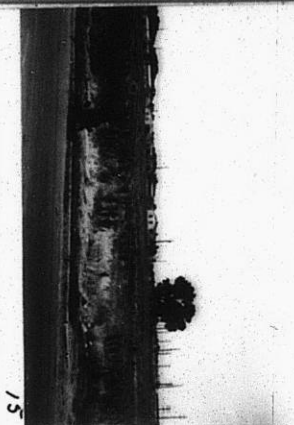
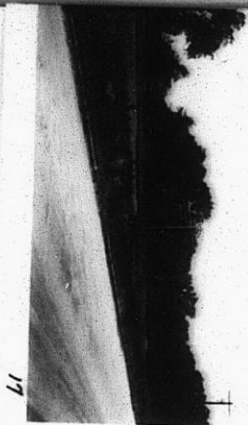
*file discarded 5-19-82*

RESOLUTION NO. \_\_\_\_\_ PUBLISHED 7-14-60

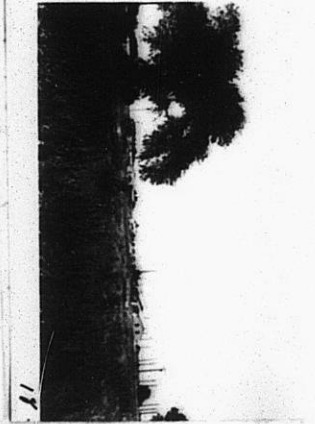
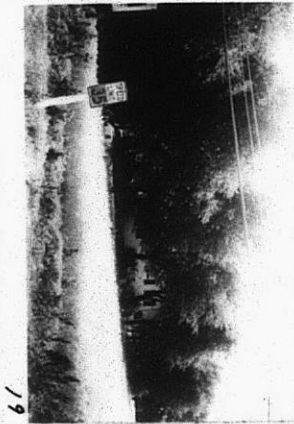
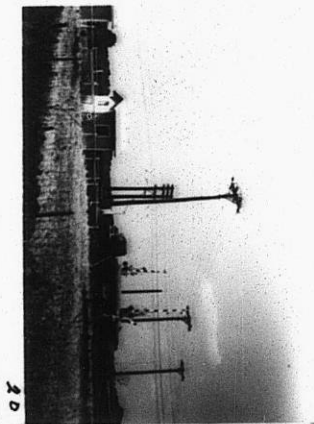
T21-202

319

341



562-0056



INTERURBAN

DRIVE

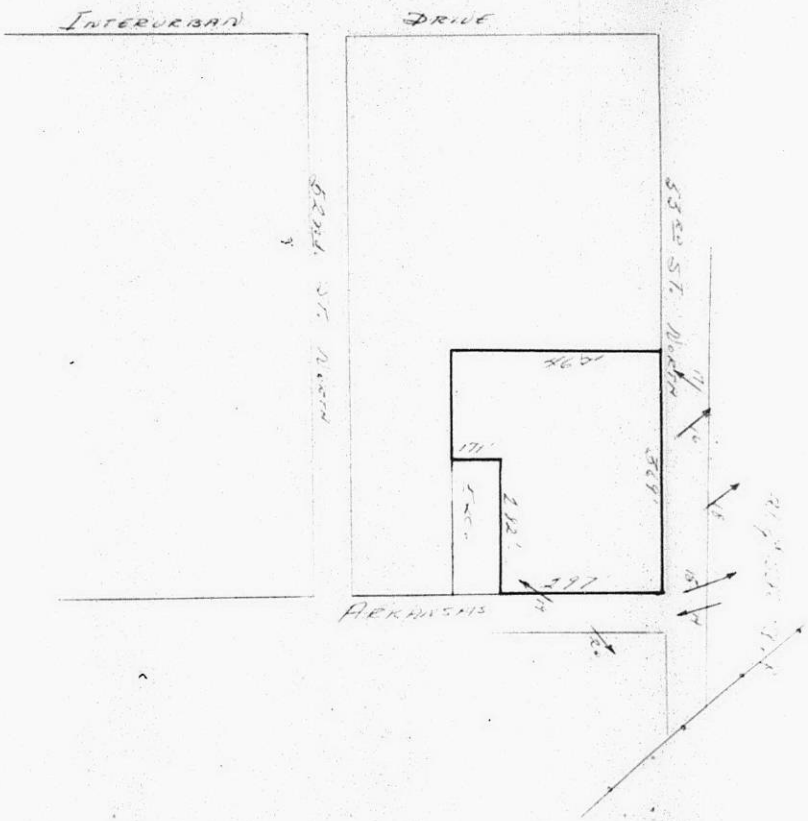
12

12

20

19

18



5C7-0056

310

34x